

# NEMO FOX Floor Lamp Instruction Manual

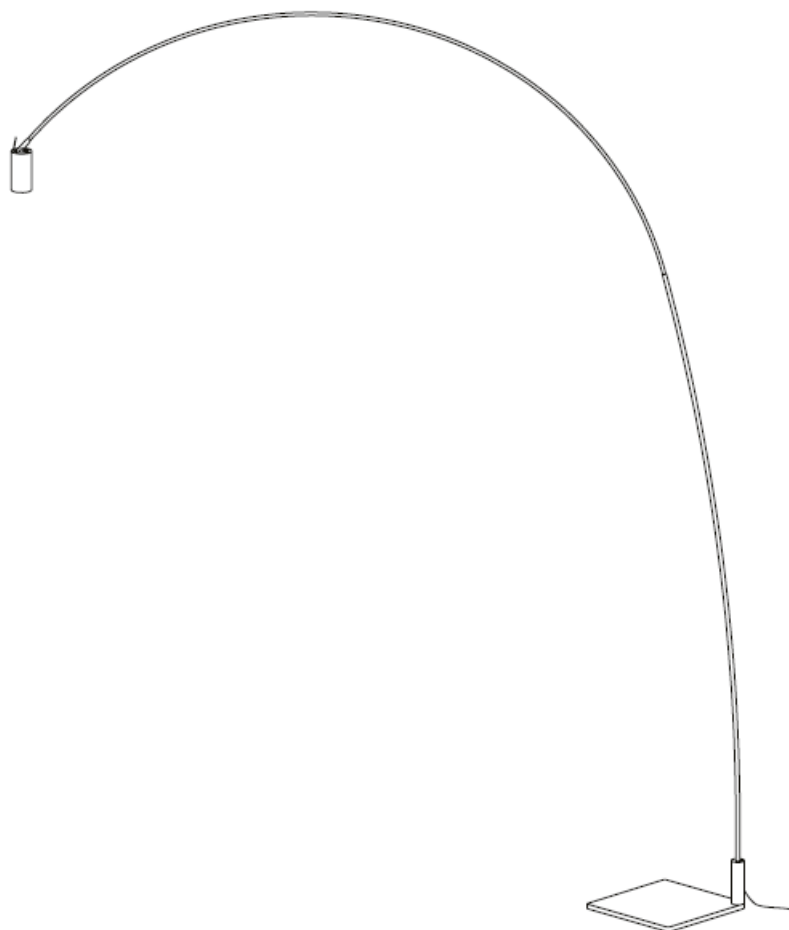
[Home](#) » [NEMO](#) » NEMO FOX Floor Lamp Instruction Manual 

## Contents

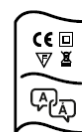
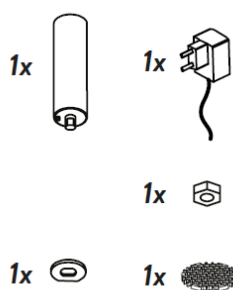
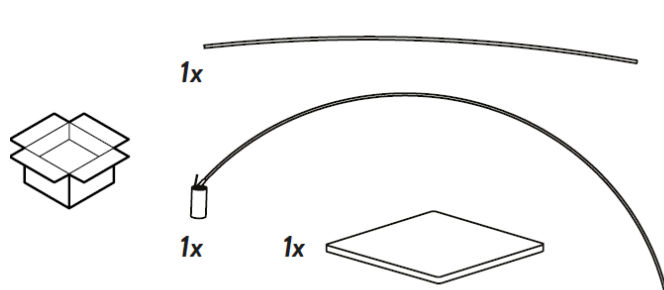
- [1 NEMO FOX Floor Lamp](#)
- [2 In the box](#)
- [3 Installation instruction](#)
- [4 Disassembly of Anti-glare accessory](#)
- [5 Movements](#)
- [6 CAUTION](#)
- [7 Documents / Resources](#)
- [8 Related Posts](#)

# NEMO

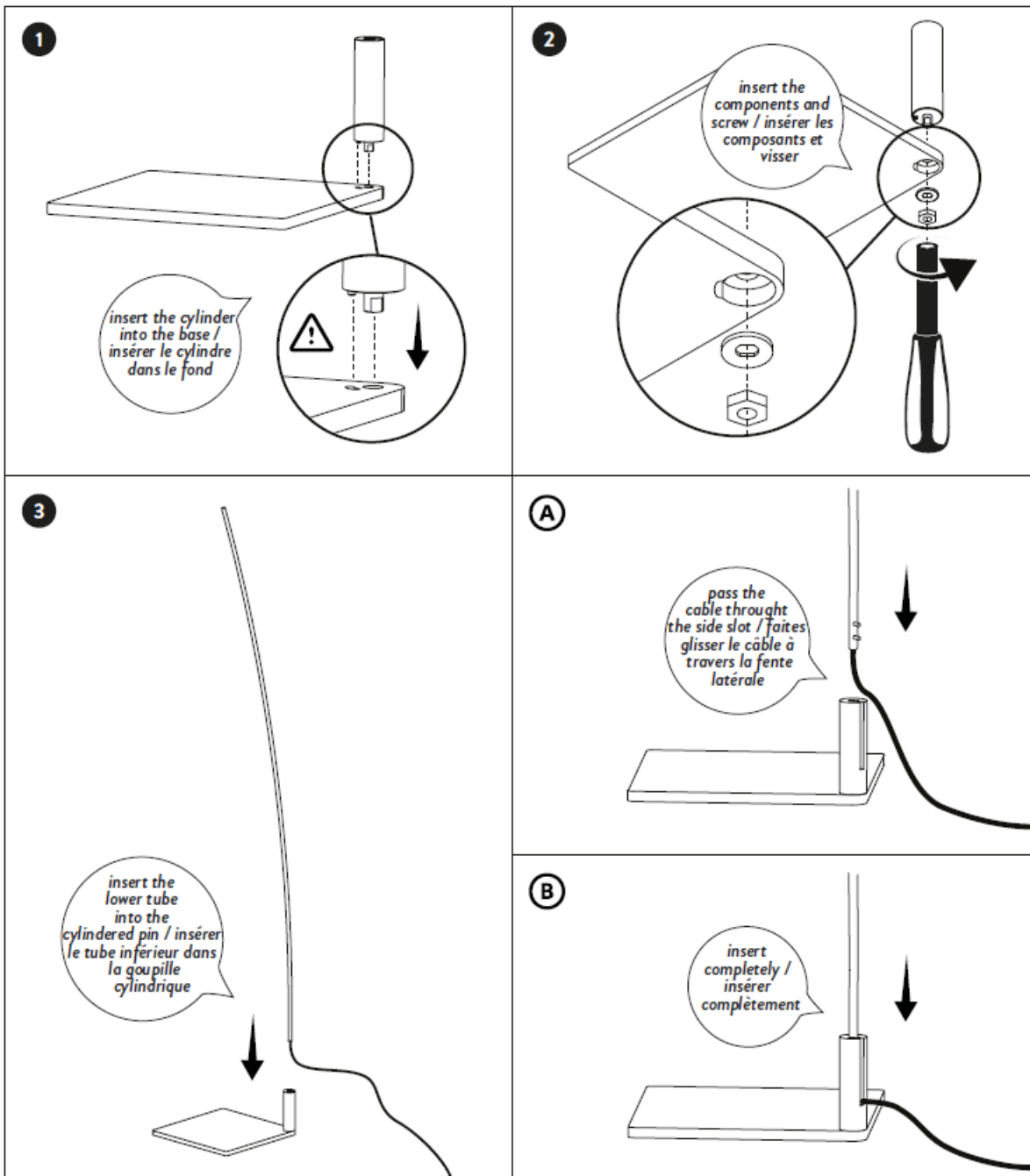
**NEMO FOX Floor Lamp**

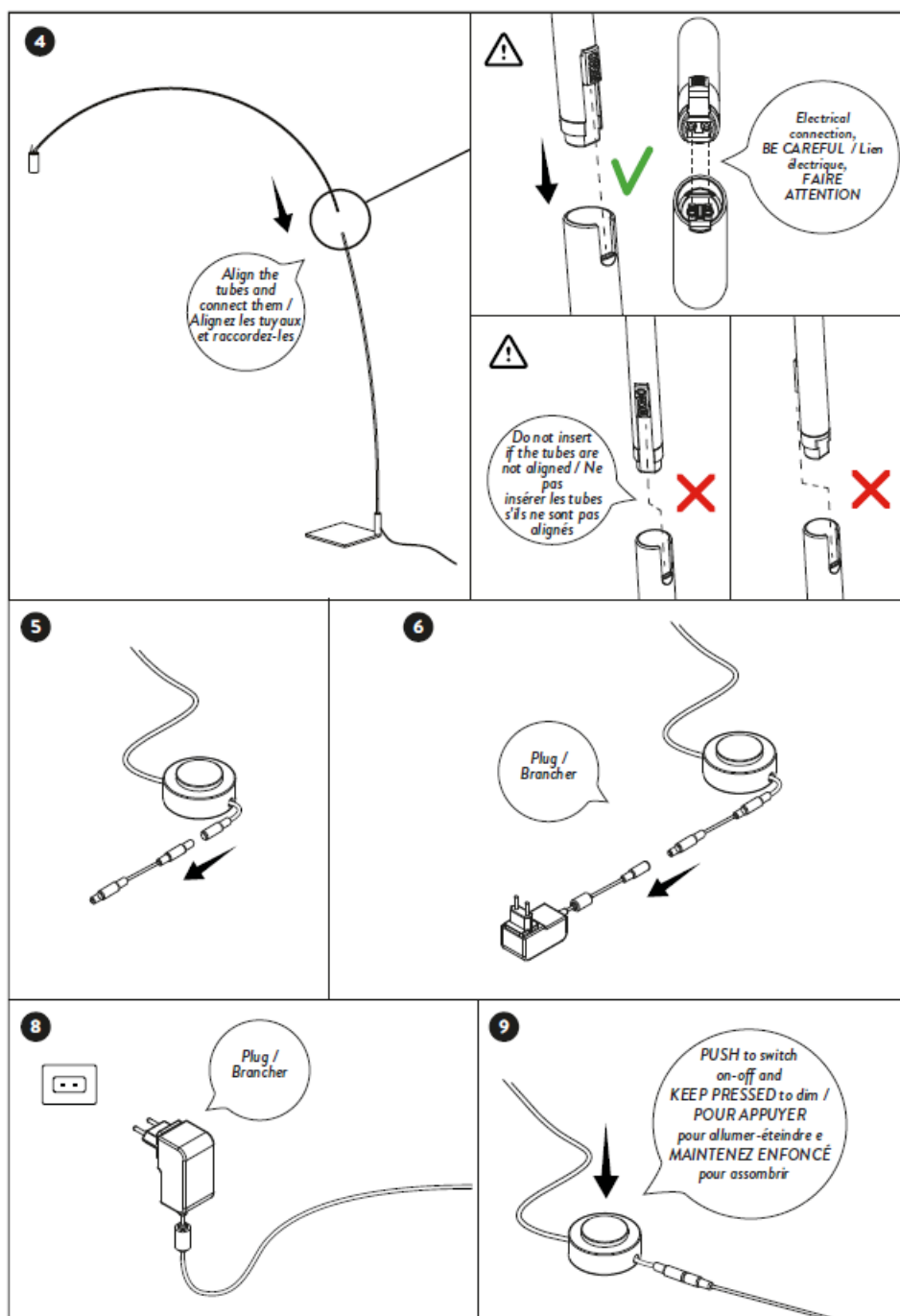


## In the box

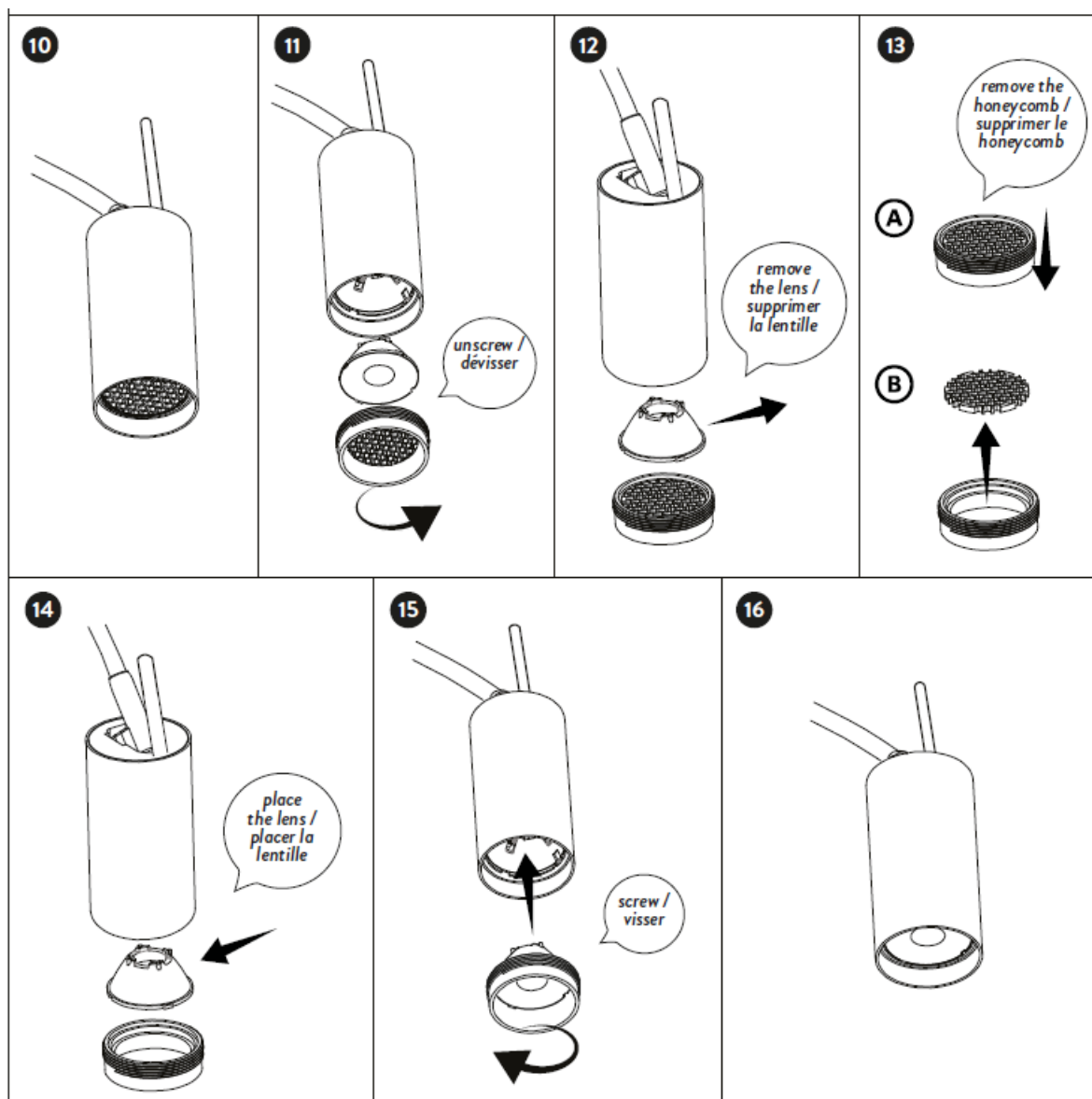


## Installation instruction

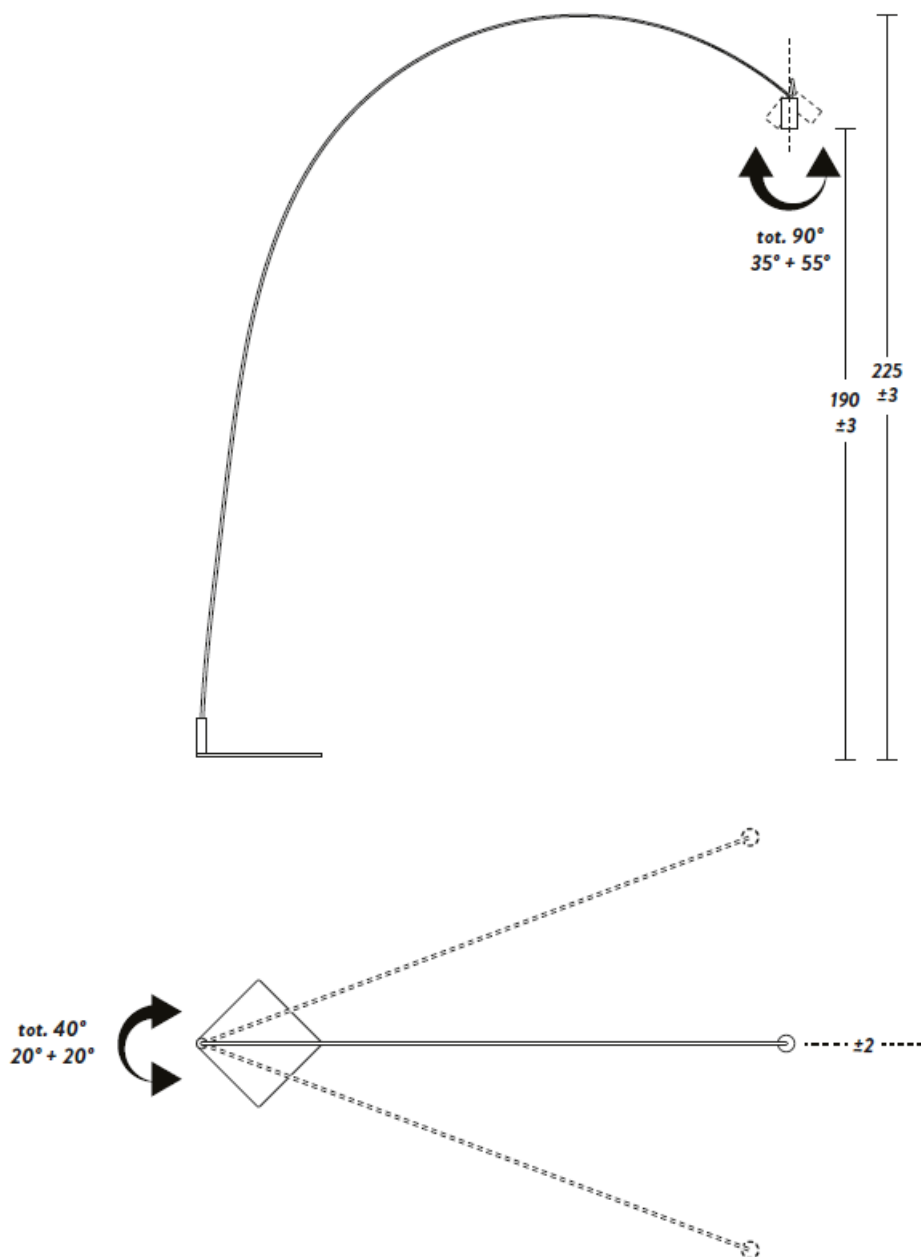




## Disassembly of Anti-glare accessory



## Movements




## CAUTION

Symbols and guarantee of the fixture are described in the enclosed Sheet. DISconnect power before proceeding with the installation of the fixture./ In the absence of the IP symbol, fixture is only for indoor installation./ Use only bulbs specified in the label/Safety is guaranteed only if installation is carried out by a electrician. Products with anodized finishes could show different color shades due to the industrial galvanic process. Shades have to be considered as aesthetic elements of the product. therefore due to this manuf. of process. | Dimensions of products made with deformations of extrusions could be subject to changes of 1cm. AS Down glass is produced by traditional craft techniques, its thickness, color and finish are subject to variations, a feature that makes each piece unique. Do not install fixture in chlorine, salt air or aggressive agents, if not expressly mentioned. The color temperature (cCT) of LED Sources can be different from the declared nominal value Between a range of 5%. / NEMO reserves the right to make any technical or formal alterations to its products without giving prior notice, specially for LED sources. Intentional or further consultations.

This lamp has been manufactured in conformity with EU Directive 2002/96/EC. The crossed-out wheellie bin symbol marked on the appliance means that it was put on the market after 13th August 2005 and that it must therefore be disposed of separately from household waste. Separate disposal of this product prevents any negative effects to public health and the environment deriving from unsuitable disposal and allows the materials it is made of to be recovered to achieve considerable savings of power and resources. The end user is responsible for delivering the appliance, at the end of its working life, to a suitable collection facility. Failure to do so will be

punished according to the current national legislation. For detailed information on collection systems and methods, please contact the relative once in your town, the local waste disposal service or the shop where you purchased the product.

**Documents / Resources**

 <p>The diagram shows a floor lamp with a curved arm. The brand name 'NEMO' is at the top left, and 'FOX' is at the bottom left. There is also a small 'FOX' logo near the base of the lamp.</p>	<p><a href="#">NEMO FOX Floor Lamp</a> [pdf] Instruction Manual FOX, Floor Lamp, FOX Floor Lamp, Lamp</p>
---	---