

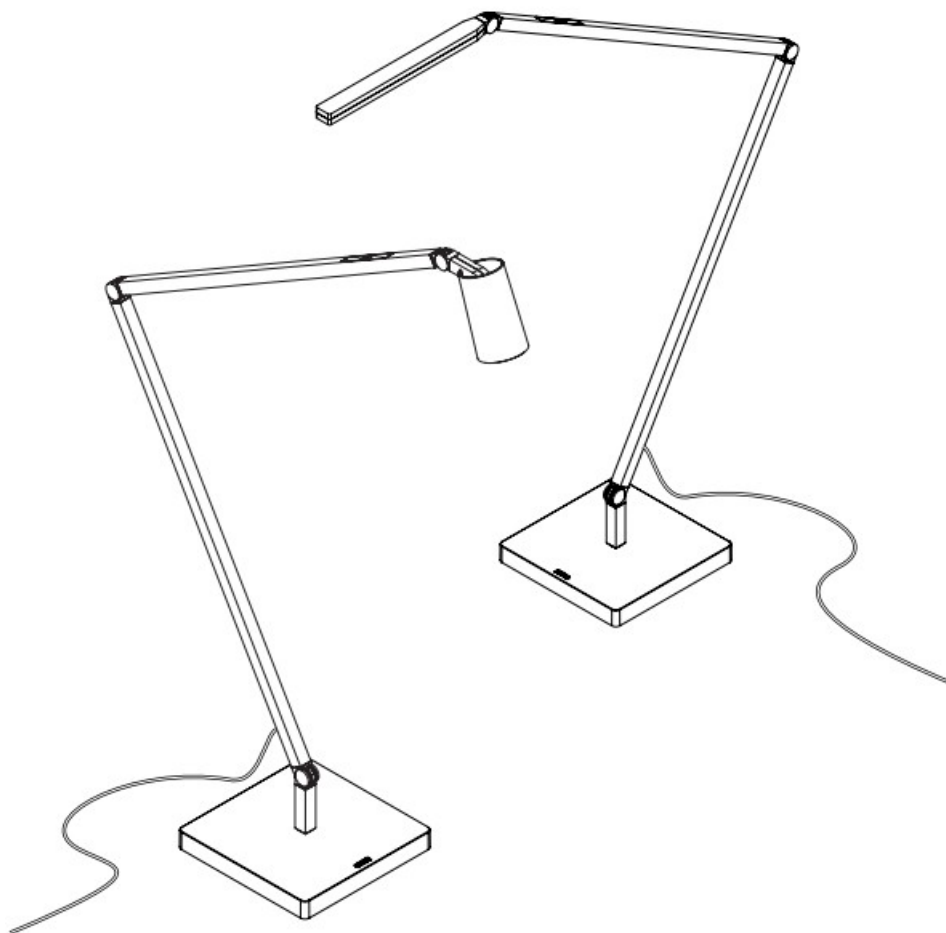


NEMO Bernhard Osann Untitled Table Lamp Instruction Manual

[Home](#) » [NEMO](#) » NEMO Bernhard Osann Untitled Table Lamp Instruction Manual 

NEMO

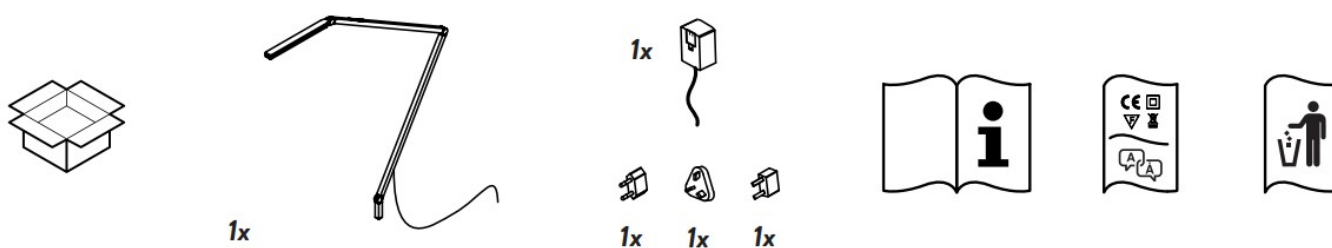
Assembly instructions
Bernhard Osann
UNTITLED
table



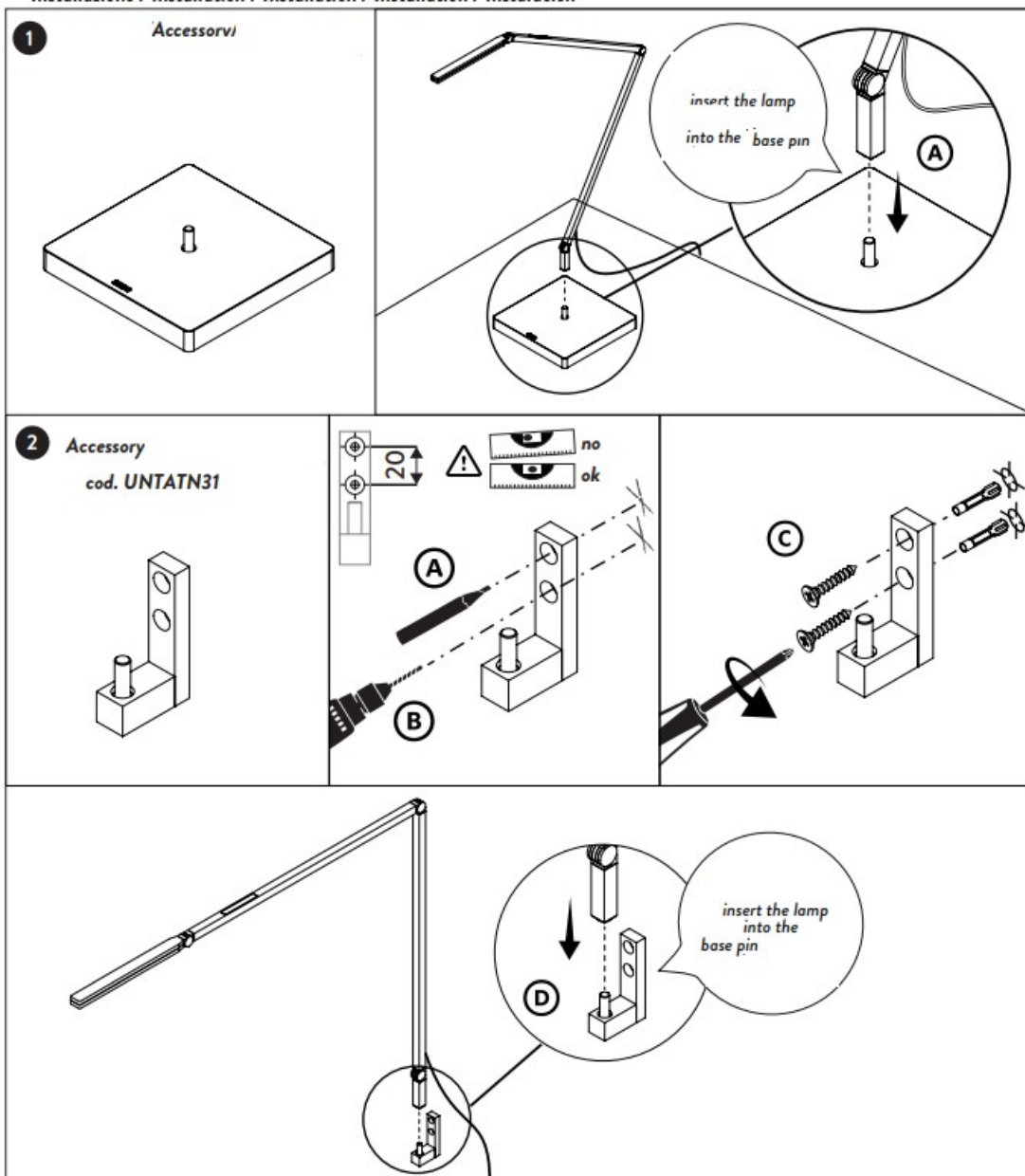
Contents

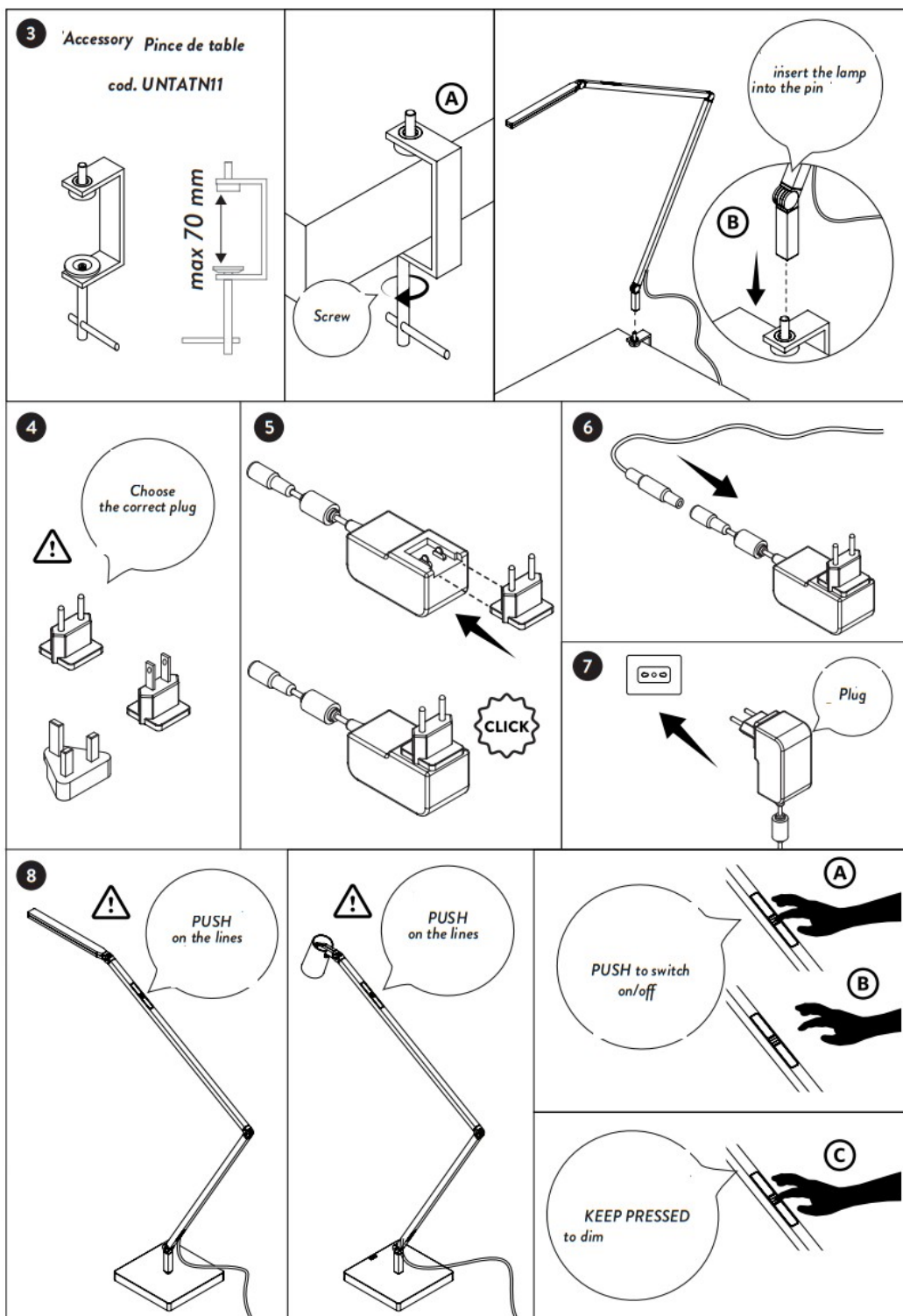
- 1 Box contents
- 2 Installation
- 3 CAUTION
- 4 LINEAR
- 5 SPOT
- 6 Documents / Resources
- 6.1 References

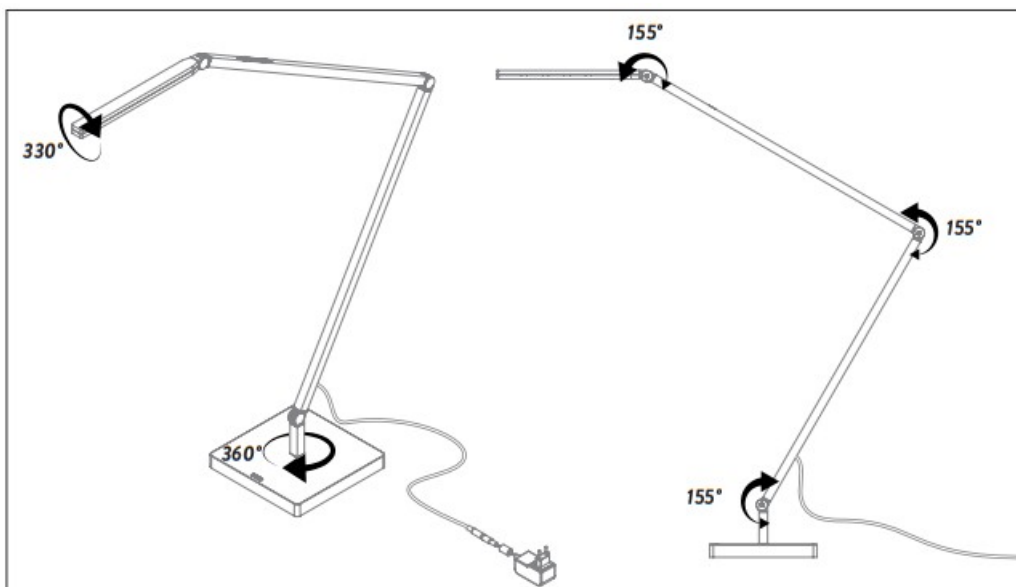
Box contents



Installation

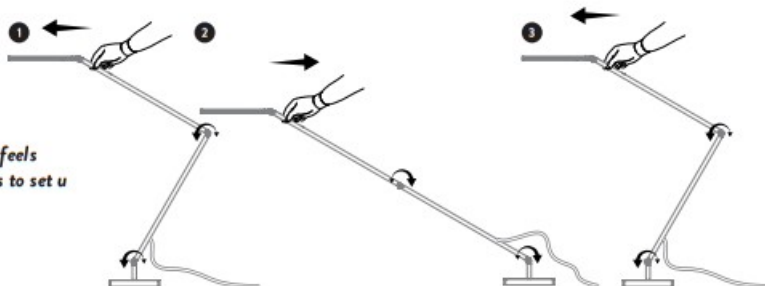






Warning

(A)

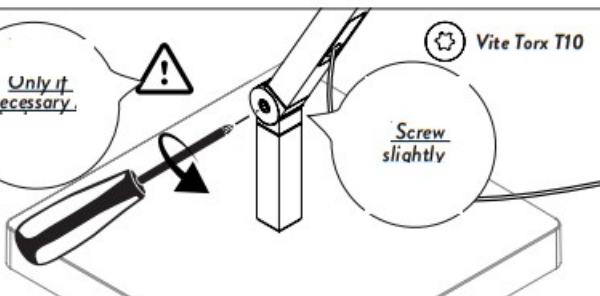


At first use, if the junctions feels loose, move the arms 10 times to set u back the junctions .

(B)

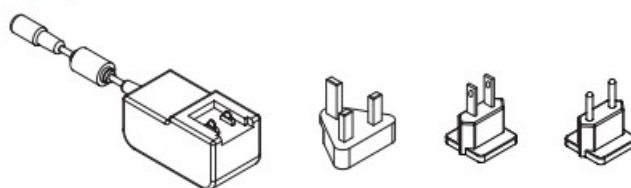
If the junctions loosen, you can screw it slightly. Excessively screwing can break the junction

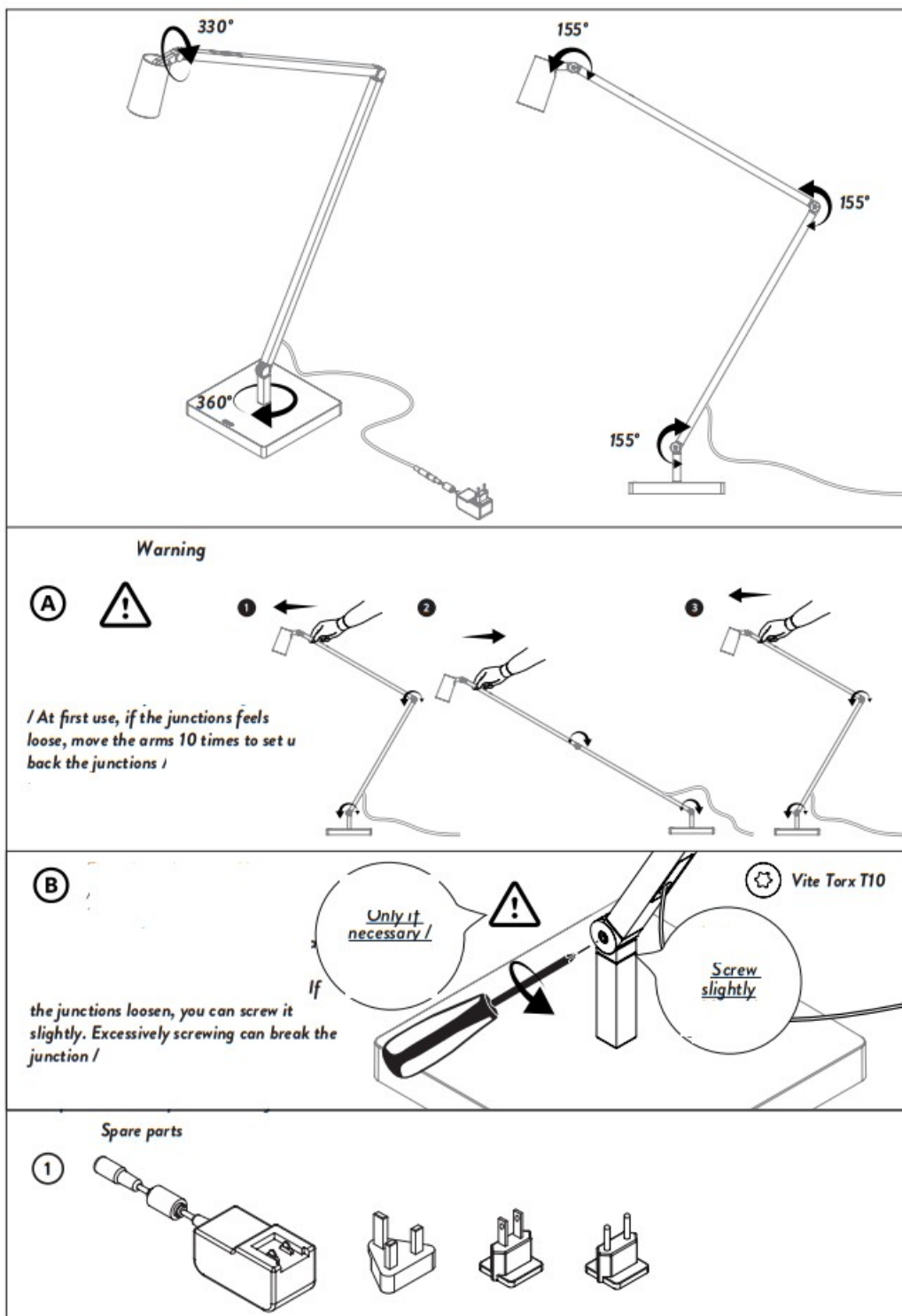
Only if necessary.



Spare parts

(1)





Symbols and guarantee of the fixture are described in the enclosed sheet.
 Disconnect power before proceeding with the installation of the fixture.
 In the absence of the IP symbol, fixture is only for indoor installation.
 Use only bulbs of suitable type and power specified in the label.
 Safety is guaranteed only if installation is carried out by a qualified electrician.
 Products with anodized finishes could show different color shades due to the industrial galvanic process. Shades have to be considered as aesthetic elements of the product.
 Polishing process is hand-made. Shades are therefore due to this manual process.
 Dimensions of products made with deformations of extrusions could be subject to changes of 1cm.

As blown glass is produced by traditional craft techniques, its thickness, color and finish are subject to variations a feature that makes each piece unique.

Do not install fixture in ambiances with presence of chlorine, salt air or aggressive agents, if not expressly mentioned.

The color temperature (CCT) of LED sources can be different from the declared nominal value between a range of +5%.

NEMO reserves the right to make any technical or formal alterations to its products without giving prior notice, especially for LED sources.

We recommend you to keep instructions for further consultations.



This lamp has been manufactured in conformity with EU Directive 2002/96/EC.

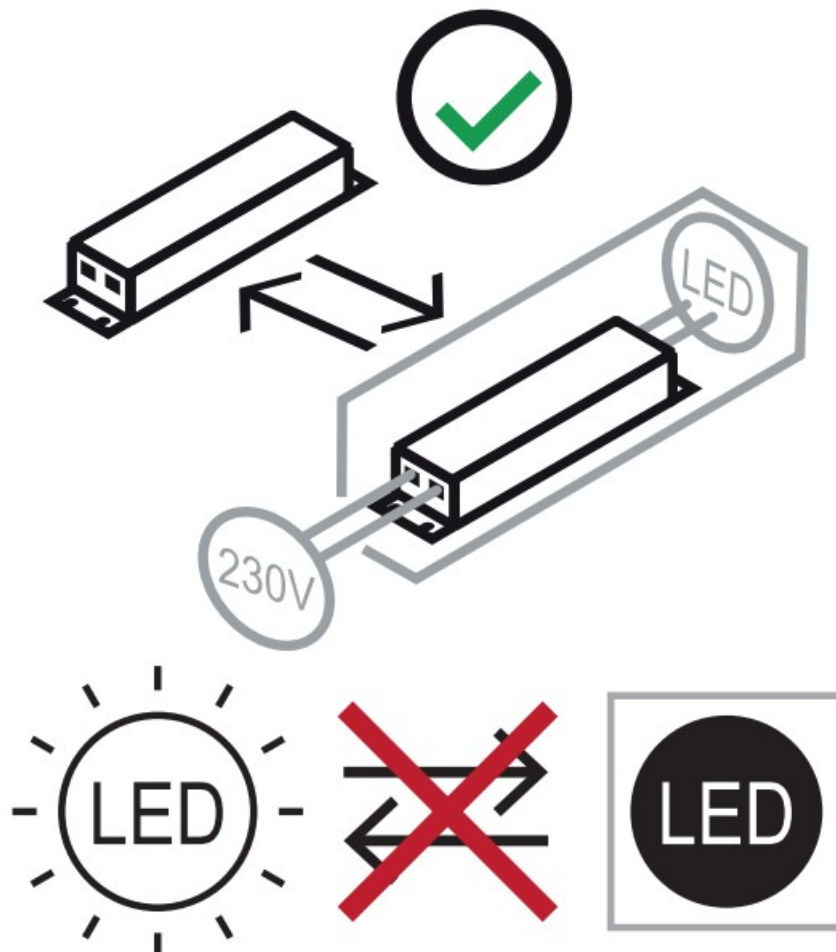
The crossed-out wheeled bin symbol marked on the appliance means that it was put on the market after 13th August 2005 and that it must therefore be disposed of separately from household waste. Separate disposal of this product prevents any negative effects to public health and the environment deriving from unsuitable disposal and allows the materials it is made of to be recovered to achieve considerable savings of power and resources.

The end user is responsible for delivering the appliance, at the end of its working life, to a suitable collection facility.

Failure to do so will be punished according to the current national legislation. For detailed information on collection systems and methods, please contact the relative office in your town, the local waste disposal service or the shop where you purchased the product.

LINEAR

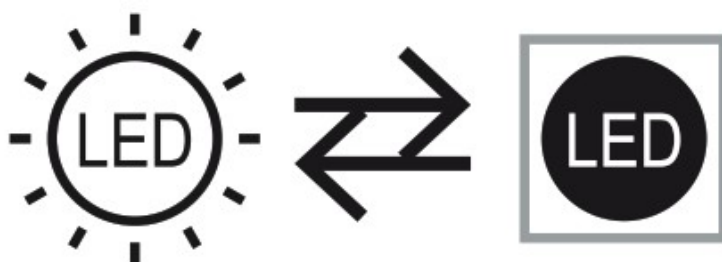
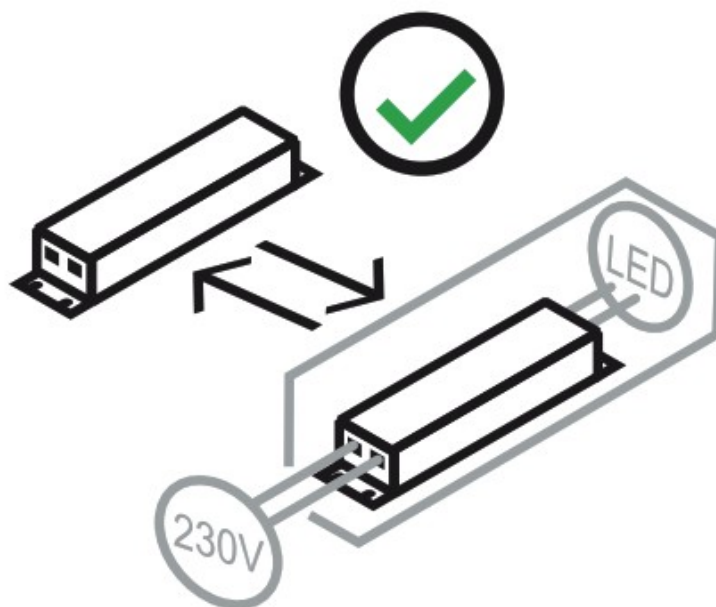
LED, 7W, 483 lm, 110-240V, 3000K, 50/60Hz dimmable (on board)



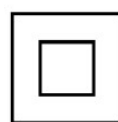
This product contains a light source of energy class "E"



LED, 5W, 395 lm, 110-240V, 3000K , 50/60Hz dimmable (on board)



This product contains a light source of energy class “G”



INSTRUCTIONS FOR LAMP CLEANING

To clean the lamp, use only a soft cloth.

NEMO Srl

Viale Brianza, 30
20823 Lentate sul Seveso (MB) ITALY

Tel +39 0362 166 05 00

Fax +39 0362 372 996

info@nemolighting.com

nemolighting.com

Copyright © 2022 NEMO Srl Milano, Italia.

The text and images are protected by copyright.

Unauthorized reproduction.

Documents / Resources

	<p>NEMO Bernhard Osann Untitled Table Lamp [pdf] Instruction Manual 072UNT000120, Bernhard Osann Untitled Table Lamp, Bernhard Osann, Untitled Table Lamp</p>
---	---

References

- [NEMO LIGHTING USA](#)