

## NEMO 072MGA MAGA TABLE Instructions

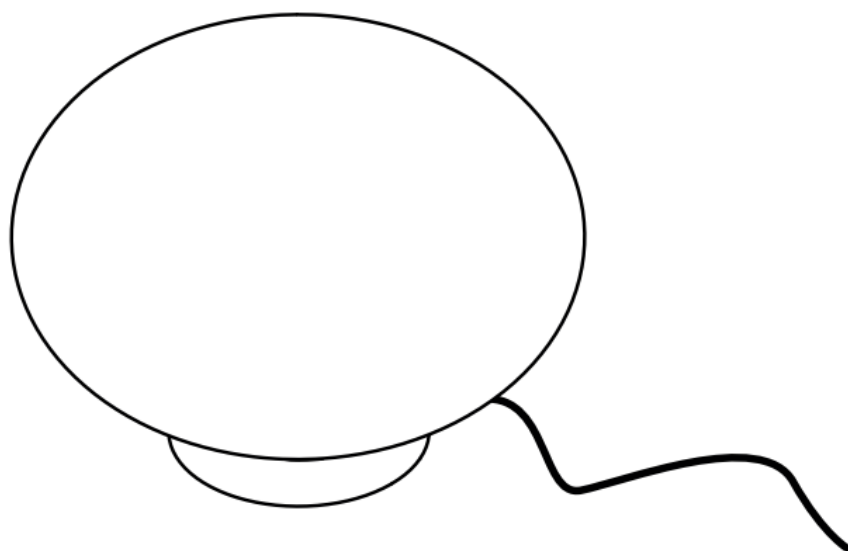
[Home](#) » [NEMO](#) » NEMO 072MGA MAGA TABLE Instructions 

### Contents

- [1 NEMO 072MGA MAGA TABLE](#)
- [2 Box contents](#)
- [3 Installation](#)
- [4 DISPOSAL](#)
- [5 CLEANING](#)
- [6 GUARANTEE](#)
- [7 ABOUT COMPANY](#)
- [8 Documents / Resources](#)
- [9 Related Posts](#)

# NEMO

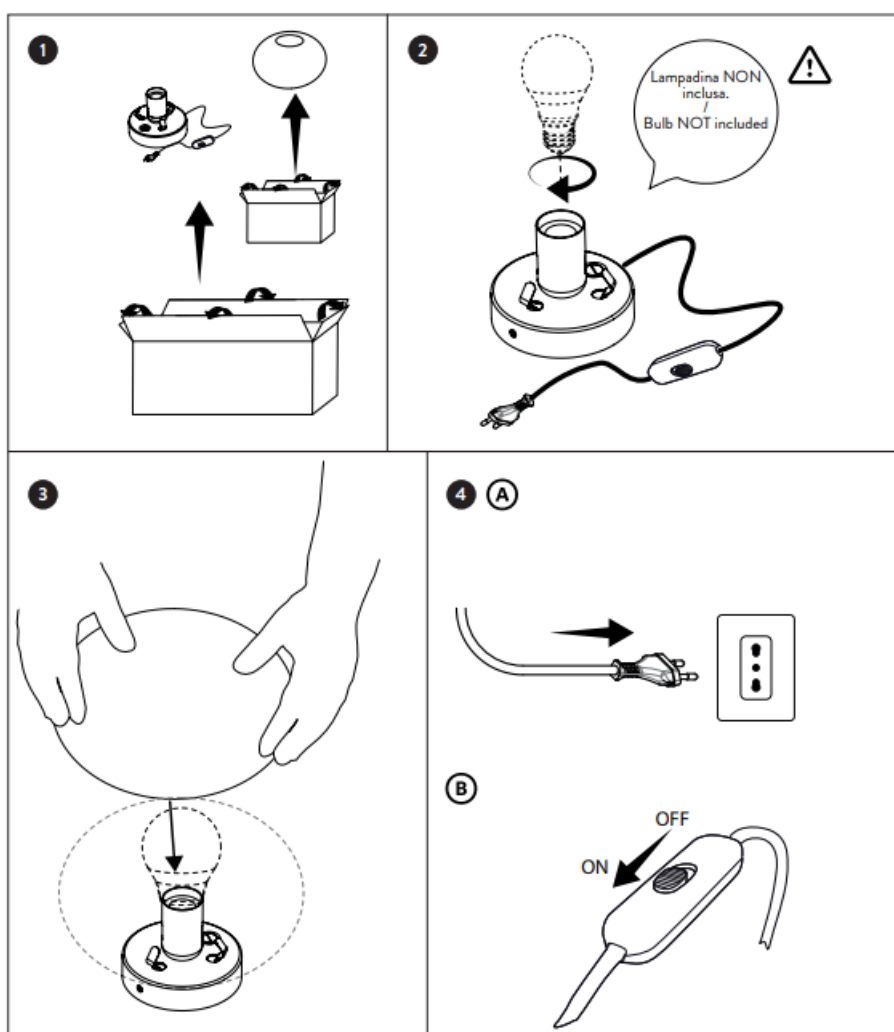
**NEMO 072MGA MAGA TABLE**



## Box contents



## Installation



## CAUTION

Disconnect power before proceeding with the installation of the fixture. / In the absence of the IP symbol, fixture is only for indoor installation. / Use only bulbs of suitable type and power specified in the label. / Safety is guaranteed only if installation is carried out by a qualified electrician. / Products with anodized finishes could show different color shades due to the industrial galvanic process. Shades have to be considered as aesthetic elements of the product. / Polishing process is hand-made. Shades are therefore due to this manual process. / Dimensions of products made with deformations of extrusions could be subject to changes of  $\pm 1$  cm. / As blown glass is produced by traditional craft techniques, its thickness, color and finish are subject to variations, a feature that makes each piece unique. / Do not install fixture in ambiances with presence of chlorine, salt air or aggressive agents, if not expressly mentioned. / The color temperature (CCT) of LED sources can be different from the declared nominal value between a range of  $\pm 5\%$ . / VERSACE reserves the right to make any technical or formal alterations to its products without giving prior notice, especially for LED sources. / We recommend you to keep instructions for further consultations. /

## DISPOSAL

This lamp has been manufactured in conformity with EU Directive 2002/96/EC. The crossed-out wheellie bin symbol marked on the appliance means that it was put on the market after 13th August 2005 and that it must therefore be disposed of separately from household waste. Separate disposal of this product prevents any negative effects to public health and the environment deriving from unsuitable disposal and allows the materials it is made of to be recovered to achieve considerable savings of power and resources. The end user is responsible for delivering the appliance, at the end of its working life, to a suitable collection facility. Failure to do so will be punished according to the current national legislation. For detailed information on collection systems and methods, please contact the relative office in your town, the local waste disposal service or the shop where you purchased the product.

## CLEANING

Lighting cleaning safety instructions

1. Before starting, switch the light off.
2. For halogen versions, make sure that the light source and the lamp are cold before starting cleaning.

### For Plastic parts – Glass -Painted parts:

- Remove the dust surface layer with latex gloves and soft electrostatic lint-free cloth.
- Clean with a soft and moist cloth with circular movements.
- Avoid using aggressive detergents. Use only neutral products (PH 7). When in doubt, use only water or try cleaning the product on a hidden part of the lamp.

**Note:** for plastic parts use only anti static alcohol-free soap. Do not use a dry cloth since they could have accumulated static electricity and could attract dust. For aluminum parts, clean with a soft cloth.

### For parts with galvanic finishes:

- Do not use soap with volatile organic compounds (such as petrol, diesel oil, kerosene etc...). If not expressly indicated, do not use abrasives or polishing products.
- Use always fabric gloves to avoid leaving prints.
- Contact Versace in case of doubts regarding lamp cleaning.

**In case of excessive dirt: contact Nemo for cleaning or proceed as follows:**

1. Wash with a non-aggressive and neutral detergent with PH7
2. Remove soap and dirt using a vaporizer (+/-150°).
3. Repeat steps 1 and 2. 4. Leave the parts to dry. 5. Make sure that there are no drops left, in order not to have visible traces left after drying. 6. Do not use grainy detergent and/or rough or abrasive sponges. Note: a quarterly cleaning of the lamp is recommended, in order to maintain characteristics.

## **GUARANTEE**

This product is guaranteed for 24 months from the date of purchase as established by the Europe- an directive for consumer protection. The warranty is valid against material or manufacturing defects while it is not valid if the defects are caused by one or more of the following reasons:

1. Wrong wiring or power supply;
2. misuse, collision, fall, neglect;
3. Natural phenomena such as lightning, humidity, accidents, natural disasters and other unforeseen events;
4. tampering or repairs carried out by unauthorized third parties or use of non-compliant material;
5. other causes not related to manufacturing defects;
6. deterioration by atmospheric agents and consumption of materials and components. During the warranty period these defects will be eliminated both by repairing the product and by replacing it. The warranty does not cover other types of damage.

Any repairs under warranty will not change the duration of the warranty. In the event of a warranty claim or not, return the appliance with its label with the CE mark together with the receipt or the invoice proving the date of purchase to your supplier. For more information on the terms of the warranty, consult your supplier.

## **Lamping**

E27, switch on cable, 230V, diffuse emission LED-FLUOHALO 1xMAX 46W


## **ABOUT COMPANY**

### **NEMO Srl**

- Viale Brianza, 30 – 20823 Lentate sul Seveso (MB) ITALY
- Tel +39 0362 166 05 00
- Fax +39 0362 372 996
- [info@nemolighting.com](mailto:info@nemolighting.com)
- [nemolighting.com](http://nemolighting.com)
- Copyright © 2018 NEMO Srl Milano, Italia.

The text and images are protected by copyright. Unauthorized reproduction.

## **Documents / Resources**

<p>NEMO</p>  <p>Quick Assembly MAGA TABLE</p>	<p><a href="#">NEMO 072MGA MAGA TABLE</a> [pdf] Instructions 072MGA MAGA TABLE, 072MGA, MAGA TABLE</p>
--	--