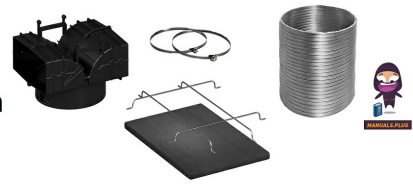


NEFF
Z51GIU1X3
Recirculation
Switch



Neff Z51GIU1X3 Recirculation Switch Installation Guide

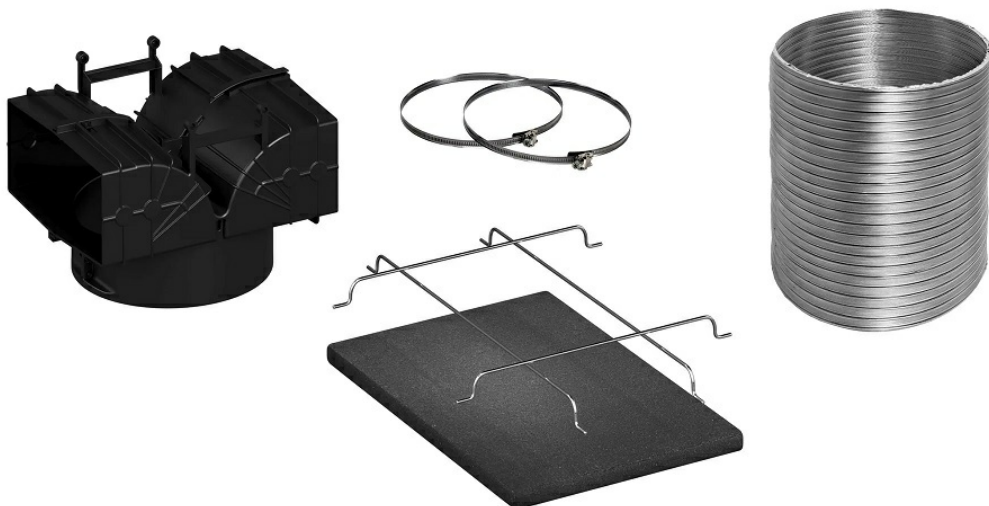
[Home](#) » [Neff](#) » Neff Z51GIU1X3 Recirculation Switch Installation Guide 

Contents

- [1 Neff Z51GIU1X3 Recirculation Switch](#)
- [2 Product Specifications](#)
- [3 Product Usage Instructions](#)
- [4 FAQs](#)
- [5 General information](#)
- [6 Included with the appliance](#)
- [7 Installation](#)
- [8 Replacing the odour filters](#)
- [9 Documents / Resources](#)
 - [9.1 References](#)
- [10 Related Posts](#)



Neff Z51GIU1X3 Recirculation Switch



Product Specifications

- Model Number: 9001851918
- Product Name: DWZ1GK1U2
- Compatible Models: LZ11GKU13, Z51GIU1X3, JZ51GIU1X3, CZ51GIU1X3

Product Usage Instructions

General Information:

When installing the optional accessory, observe the safety instructions provided.

- **WARNING:** Risk of suffocation! Keep packaging material away from children to prevent suffocation.
- **WARNING:** Risk of injury! Components inside the appliance may have sharp edges. Wear protective gloves.

Included Accessories:

After unpacking all parts, check for any damage during transit and ensure the delivery is complete.

Fitting the Air Recirculation Deflector:

1. Remove the flue duct as per the installation instructions for your appliance.
2. Push the two parts of the circulating air guide together until they click into place.
3. Screw the circulating air guide to the retaining bracket. Ensure screws are inserted into the correct holes.
4. Tighten and shorten the hose if necessary. Secure the hose using hose clips.
5. Fit the flue duct with the inner flue duct slots pointing upwards.

Odour Filter for Recirculating Air Mode:

Odour filters need to be replaced regularly for efficient odor removal. Replace the odor filter every 3 months with normal use.

Installing the Odour Filter:

1. Remove the grease filter.
2. Place the odour filter onto the rear of the grease filter and secure it using the grid.
3. Insert the grease filter back into place.

FAQs

- **Q: How often should the odour filter be replaced?**
 - A: The odour filter should be replaced every 3 months with normal use (approximately one hour a day).
- **Q: Can the odour filter be cleaned or regenerated?**
 - A: No, the odour filter cannot be cleaned or regenerated. It needs to be replaced regularly for optimal performance.

General information

- Read this instruction manual carefully.
- Keep the instruction manual and the product information safe for future reference or for the next owner.
- The appliance can only be used safely if it is correctly installed according to the safety instructions. The installer is responsible for ensuring that the appliance works perfectly at its installation location.
- This instruction manual is intended for the installer of the optional accessory.
- Only a licensed expert may connect the appliance.
- Switch off the power supply before carrying out any work.

Safe installation

Observe the safety instructions when installing the optional accessory.

WARNING – Risk of suffocation!

Children may put packaging material over their heads or wrap themselves up in it and suffocate.

- Keep packaging material away from children.
- Do not let children play with packaging material.

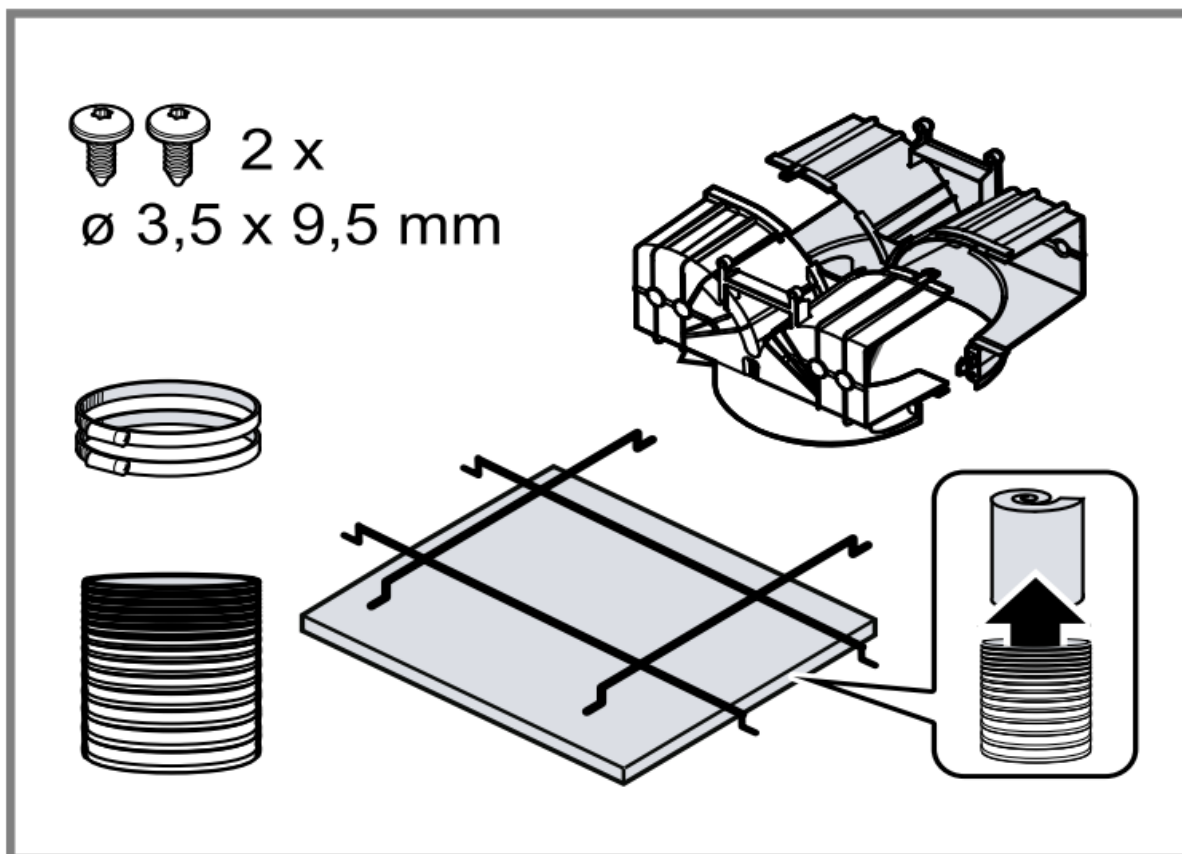
WARNING – Risk of injury!

Components inside the appliance may have sharp edges.

- Wear protective gloves.

Included with the appliance

After unpacking all parts, check for any damage in transit and the completeness of the delivery. → Fig. 1

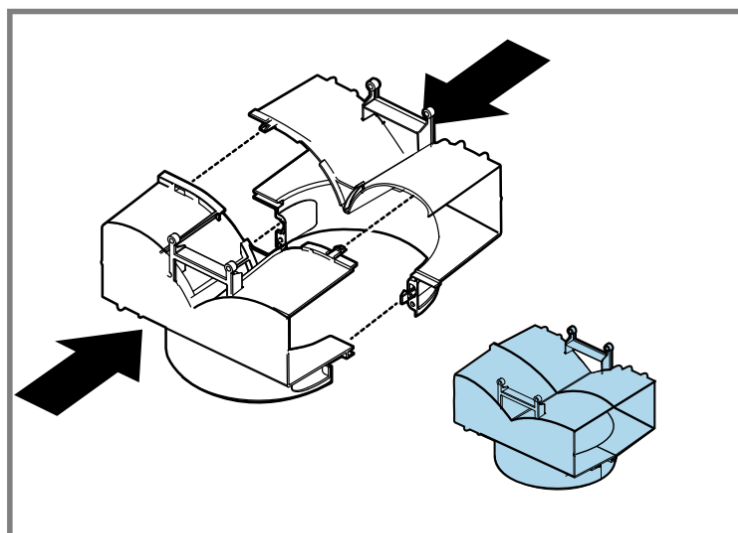


1

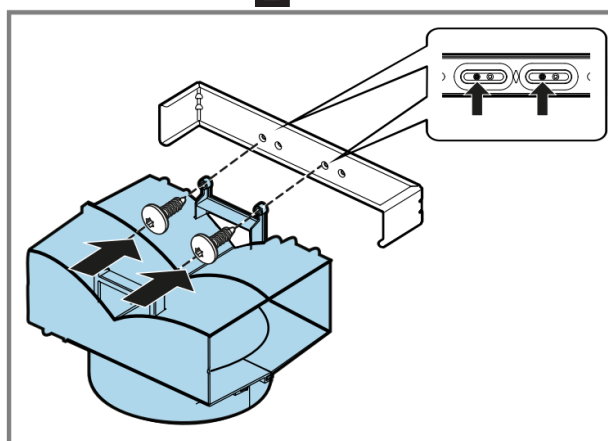
Installation

Fitting the air recirculation deflector

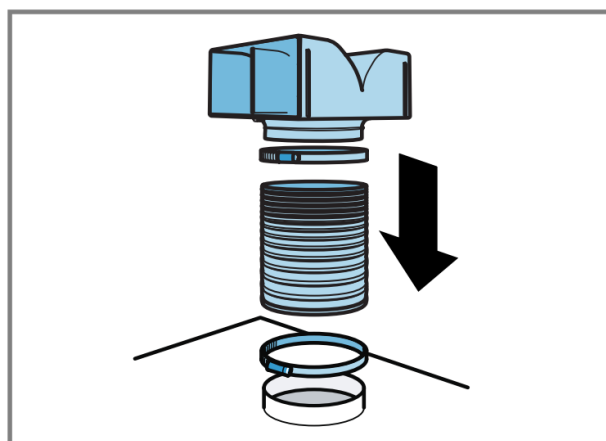
1. Remove the flue duct.
 - You can find information on how to remove the flue duct in the installation instructions for your appliance.
2. Push the two parts of the circulating air guide together until they click into place. → Fig. 2
3. Screw the circulating air guide to the retaining bracket. → Fig. 3
 - The screws must each be screwed into the lefthand hole.
4. Tighten and, if required, shorten the hose.
5. Use the 2 hose clips to secure the hose to the circulating air guide and the air-pipe connector.
 - Smooth the hose at the top and bottom at the points at which the hose clamps are attached. → Fig. 4
6. Fit the flue duct.
 - The slots on the inner flue duct section point upwards. You can find information about the installation of the flue duct in the installation instructions for your appliance.



2



3



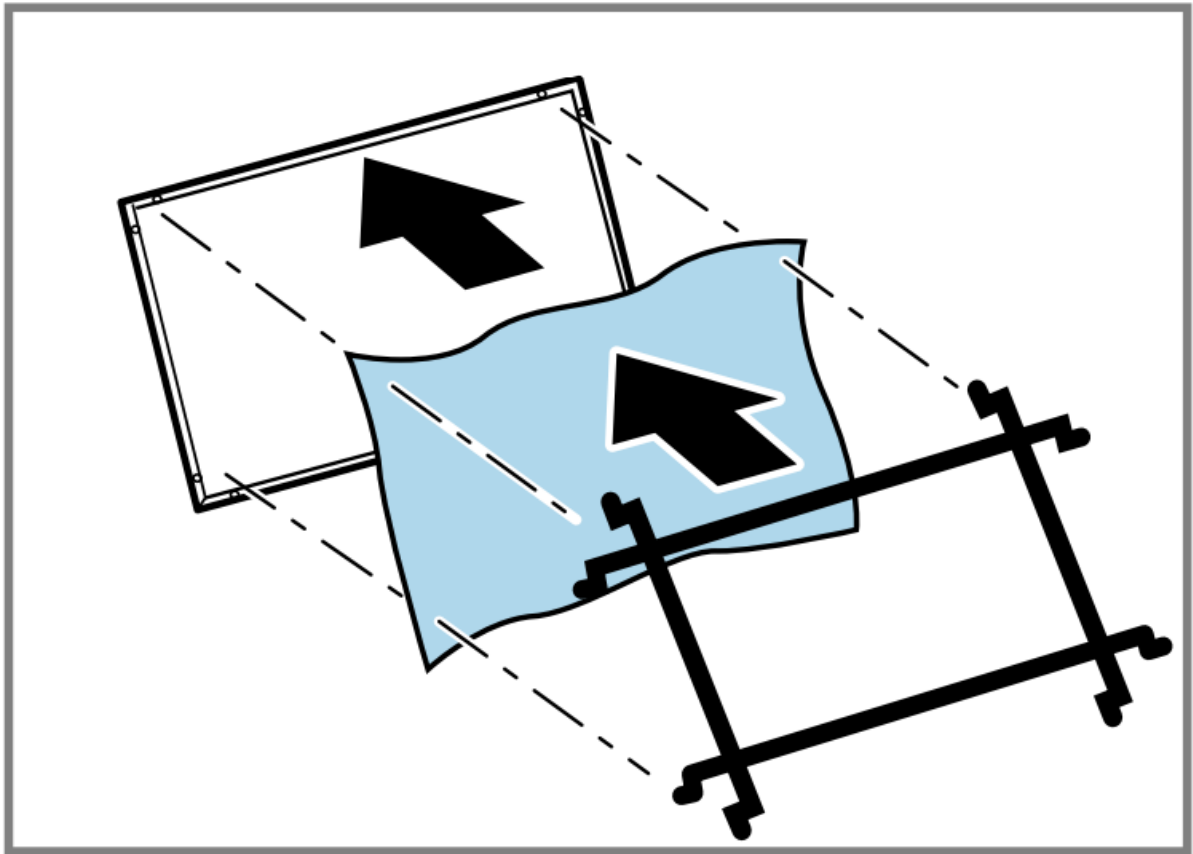
4

Odour filter for recirculating air mode

Odour filters bind odorous substances in air recirculation mode. Regularly replaced odour filters guarantee a high level of odour removal. With normal use (approx. one hour a day), the odour filter must be replaced every 3 months. The odour filter cannot be cleaned or regenerated. You can obtain odour filters from the after-sales service or the online shop. Only use original odour filters.

Installing the odour filter

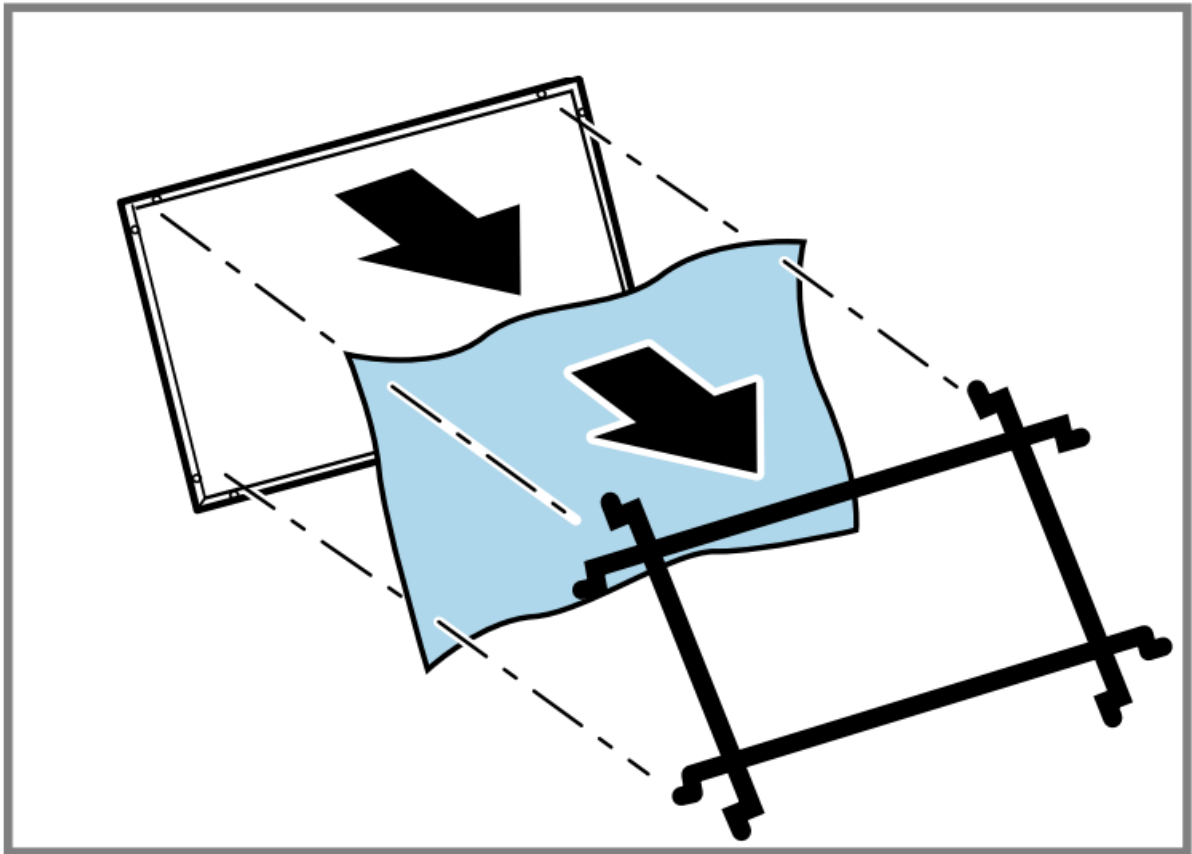
1. Remove the grease filter.
2. Place the odour filter onto the rear of the grease filter and use the grid to secure the odour filter to the outer holes. → Fig. 5
3. Insert the grease filter. Information about installing the grease filter can be found in the operating instructions for your appliance.



5

Replacing the odour filters

1. Remove the grease filter.
2. Remove the grid and the odour filter. → Fig. 6
3. Place the new odour filter onto the rear of the grease filter and use the grid to secure the odour filter to the outer holes. → Fig. 5
4. Insert the grease filter. Information about installing the grease filter can be found in the operating instructions for your appliance.
5. Dispose of old odour filters with the residual waste. The odour filters do not contain any harmful substances.



6

Setting the saturation indicator

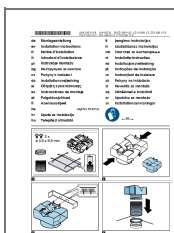
The saturation indicator must be adjusted depending on the filter used.

Note: The saturation indicator for the grease filter is set as standard. For use in the circulating-air mode, you must also activate the saturation indicator for the odour filter

Requirement: The appliance is switched off.

- Press and hold and for 3 seconds.
- lights up briefly first and then and briefly lights up at the same time.
- The saturation indicator for the odour filters is activated.

Documents / Resources



[Neff Z51GIU1X3 Recirculation Switch](#) [pdf] Installation Guide

DWZ1GK1U2, LZ11GKU13, Z51GIU1X3, Z51GIU1X3 Recirculation Switch, Z51GIU1X3, Recirculation Switch, Switch

References

- [User Manual](#)

Manuals+, Privacy Policy

This website is an independent publication and is neither affiliated with nor endorsed by any of the trademark owners. The "Bluetooth®" word mark and logos are registered trademarks owned by Bluetooth SIG, Inc. The "Wi-Fi®" word mark and logos are registered trademarks owned by the Wi-Fi Alliance. Any use of these marks on this website does not imply any affiliation with or endorsement.