



NEFF N17HH10G0 Built In Warming Drawer Instruction Manual

[Home](#) » [Neff](#) » NEFF N17HH10G0 Built In Warming Drawer Instruction Manual 

NEFF N17HH10G0 Built In Warming Drawer Instruction Manual



You must note the following Electrical connection

The appliance must only be connected to a earthing contact socket that has been correctly installed. A socket must only be installed or the power cable replaced if this is carried out by a qualified electrician, and in accordance with the appropriate regulations.

The appliance must only be connected using the power cable provided. Connect the power cable to the back of the appliance.

Connecting cables with various plug types are available from after- sales service.

No multi-plugs, multiple connectors or extension leads may be used. Overloading causes a risk of fire.

If the plug can no longer be reached after the installation, a partition must be provided in the phases in the permanent electrical installation in accordance with the installation regulations.

Fitted units

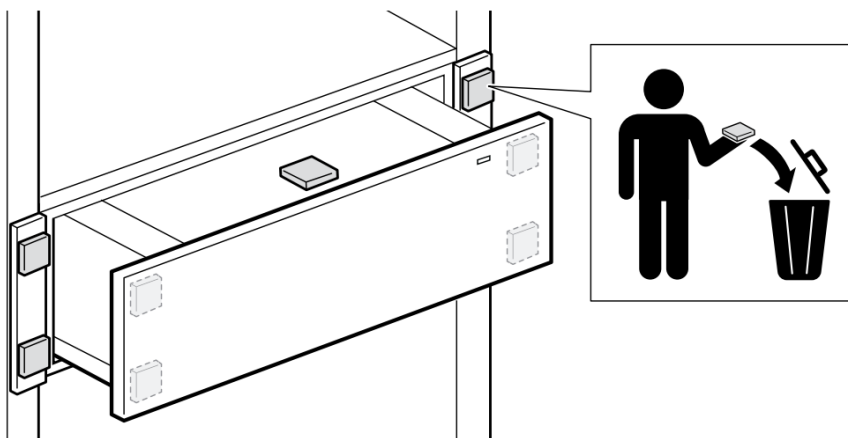
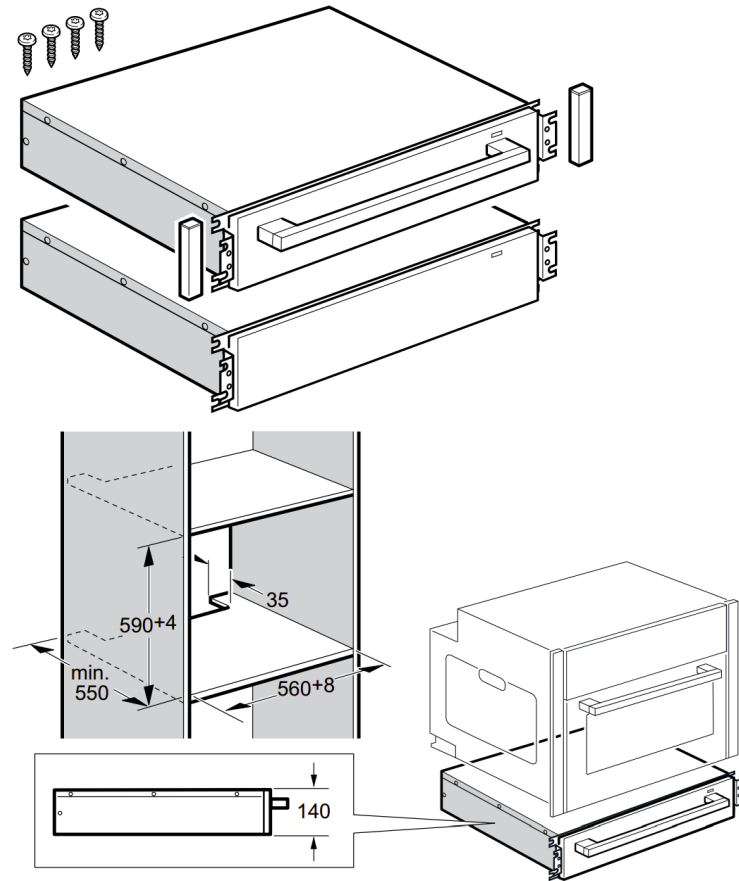
The fitted cabinet must not have a back panel behind the appliances. There should be a gap of at least 35 mm between the wall and the cabinet base as well as the rear panel of the cabinet situated above. Ventilation slots and intake openings must not be covered. Read the information in the installation instructions for the appliance installed above. Do not install the appliance behind a decorative panel, as this puts the appliance at risk of overheating.

Contents

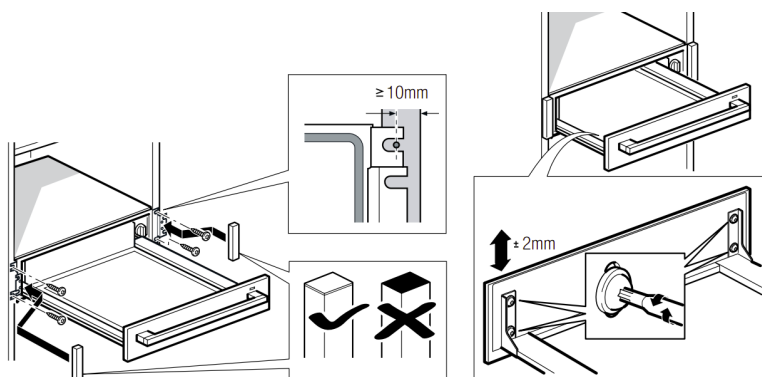
[1 Installation instructions](#)

[2 Documents / Resources](#)

Installation instructions

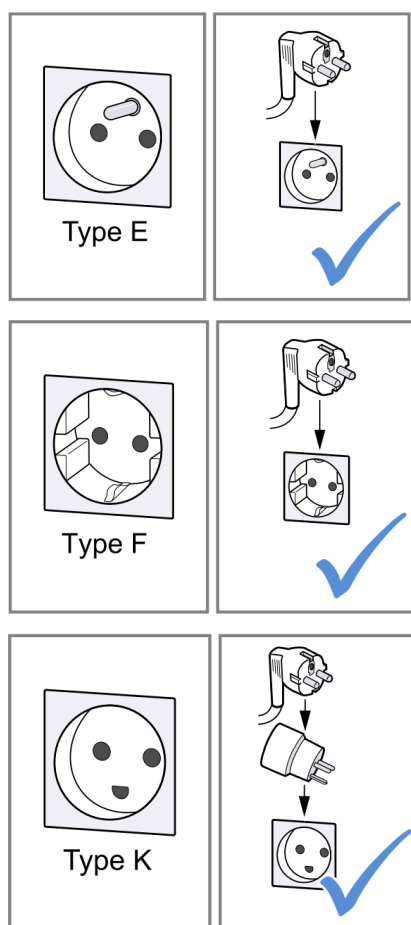


Inserting the appliance (Fig. 1)

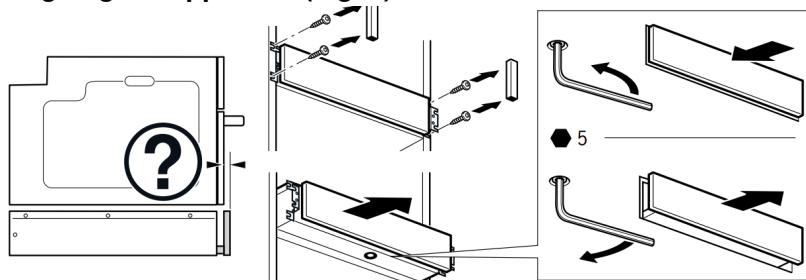


Connect the appliance. Align the appliance flush in the unit and screw it firmly in place.

Note: Make sure that the connecting cable is not trapped or kinked. The connecting cable must not come into contact with the rear and base of the appliance after installation.



Aligning the appliance (Fig. 2)




If the front of the appliance is not flush with the appliance that is installed above it once it is installed, you can align the front of the drawer.

1. Remove the appliance that is installed above the drawer.

2. Undo the fastening screws at the sides of the drawer and pull the drawer out a third of the way.
3. Use an Allen key to turn the set screw on the underside of the drawer (size 5) until the front of the appliance is aligned.

Documents / Resources

	<p>NEFF N17HH10G0 Built In Warming Drawer [pdf] Instruction Manual N17HH10G0 Built In Warming Drawer, N17HH10G0, Built In Warming Drawer, Warming Drawer , Drawer</p>
---	---