



## Neff D65XAM2S0 Extractor hood User Manual

[Home](#) » [Neff](#) » Neff D65XAM2S0 Extractor hood User Manual 



**Extractor hood**  
**User manual and installation instructions 2**  
**D65XAM2S0, D65XAM2S0B,**  
**D95XAM2S0, D95XAM2S0B**

## Contents

- 1 Safety
- 2 Avoiding material damage
- 3 Environmental protection and saving energy
- 4 Operating modes
- 5 Familiarising yourself with your appliance
- 6 Basic operation
- 7 Cleaning and servicing
- 8 Troubleshooting
- 9 Disposal
- 10 Customer Service
- 11 Accessories
- 12 Installation instructions
- 13 Documents / Resources
  - 13.1 References
- 14 Related Posts

## Safety

- Observe the following safety instructions.

### 1.1 General information

Read this instruction manual carefully

- Keep the instruction manual and the product information safe for future reference or for the next owner.
- Do not connect the appliance if it has been damaged in transit.

### 1.2 Intended use

This appliance is designed only to be built into kitchen units. Read the special installation instructions.

The appliance can only be used safely if it is correctly installed according to the safety instructions. The installer is responsible for ensuring that the appliance works perfectly at its installation location. Only use this appliance:

- For extracting cooking vapor.
- In private households and in enclosed spaces in a domestic environment.
- Up to an altitude of max. 4000 m above sea level.

Do not use the appliance:

- With an external timer.

### 1.3 Restriction on user group

This appliance may be used by children aged 8 or over and by people who have reduced physical, sensory or mental abilities or inadequate experience and/or knowledge, provided that they are supervised or have been instructed on how to use the appliance safely and have understood the resulting dangers.

Children must not play with the appliance. Children must not perform cleaning or user maintenance unless they are at least 15 years old and are being supervised.

Keep children under the age of 8 years away from the appliance and power cable.

### 1.4 Safe use



**WARNING** – Risk of suffocation! Children may put packaging material over their heads or wrap themselves up in it and suffocate.

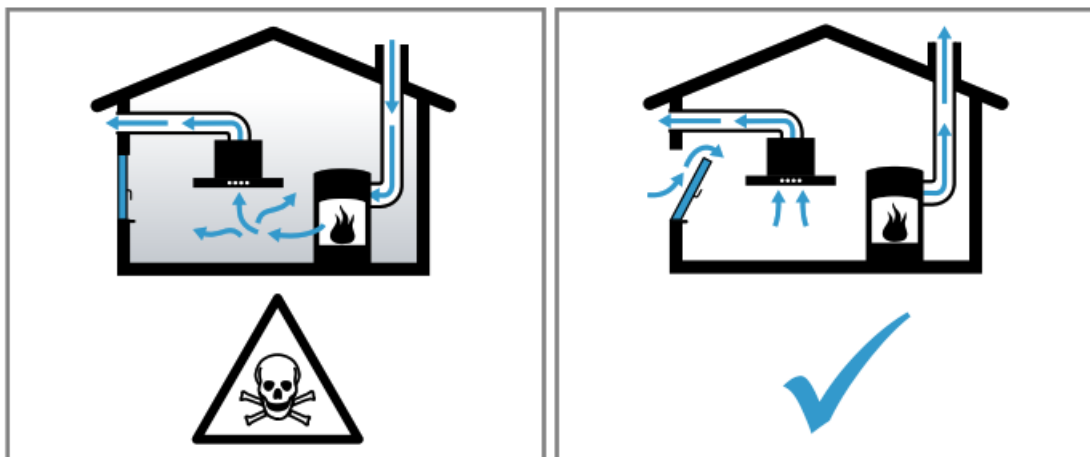
- ▶ Keep packaging material away from children.
- ▶ Do not let children play with packaging material. Children may breathe in or swallow small parts, causing them to suffocate.
- ▶ Keep small parts away from children.
- ▶ Do not let children play with small parts.



#### **WARNING – Risk of poisoning!**

Risk of poisoning from flue gases being drawn back in. Room-air-dependent heat-producing appliances (e.g. gas, oil, wood or cooperated heaters, continuous flow heaters or water heaters) obtain combustion air from the room in which they are installed and discharge the exhaust gases into the open through an exhaust gas system (e.g. a chimney). With the extractor hood switched on, air is extracted from the kitchen and the adjacent rooms. Without an adequate supply of air, the air pressure falls below atmospheric pressure. Toxic gases from the flue or the extraction shaft are sucked back into the living space.

•



Always ensure adequate fresh air in the room if the appliance is being operated in exhaust air mode at the same time as a room-air-dependent heat-producing appliance is being operated.

- It is only possible to safely operate the appliance if the pressure in the room in which the heating appliance is installed does not drop more than 4 Pa (0.04 mbar) below atmospheric pressure. This can be achieved whenever the air needed for combustion is able to enter through openings that cannot be sealed, for example in doors, windows, incoming/exhaust air wall boxes or by other technical means. An incoming/exhaust air wall box alone does not ensure compliance with the limit.
- In any case, consult your responsible chimney sweep. They are able to assess the house's entire ventilation setup and will suggest suitable ventilation measures to you.
- Unrestricted operation is possible if the appliance is operated exclusively in circulating-air mode.



#### **WARNING – Risk of fire!**

Fatty deposits in the grease filters may catch fire.

- Never operate the appliance without a grease filter.
- Never work with naked flames close to the appliance (e.g. flambéing).
- Do not install the appliance near a solid fuel heating appliance (e.g. wood- or coal-burning) unless the heating appliance has a sealed, non-removable cover. There must be no flying sparks. Hot oil or grease ignites very quickly.
- Always supervise hot oil and fat.

- Never extinguish burning oil or fat with water. Switch off the cooking zone. Extinguish flames carefully using a lid, fire blanket or something similar.

When gas burners are in operation without any cookware placed on them, they can build up a lot of heat. A ventilation appliance installed above the cooker may become damaged or catch fire.

- Only operate the gas burners with cookware on them.  
Operating multiple gas hobs at the same time generates a great deal of heat. A ventilation appliance installed above the cooker may become damaged or catch fire.
- Only operate the gas hobs with cookware on them.
- Select the highest fan setting.
- Never operate two gas hobs simultaneously on the highest flame for longer than 15 minutes. Two gas hobs correspond to one large burner.
- Never operate large burners of more than 5 kW with the highest flame for longer than 15 minutes, e.g. a wok.



#### **WARNING – Risk of burns!**

The accessible parts of the appliance become hot during operation.

- Never touch these hot parts.
- Keep children at a safe distance.  
The appliance becomes hot during operation.
- Allow the appliance to cool down before cleaning.



#### **WARNING – Risk of injury!**

Components inside the appliance may have sharp edges.

- Carefully clean the appliance interior.  
Changes to the electrical or mechanical assembly are dangerous and may lead to malfunctions.
- Do not make any changes to the electrical or mechanical assembly.  
The light emitted by LED lights is very dazzling and can damage the eyes (risk group 1).
- Do not look directly into the switched-on LED lights for longer than 100 seconds.



#### **WARNING – Risk of electric shock!**

If the appliance or the power cord is damaged, this is dangerous.

- Never operate a damaged appliance.
- Never pull on the power cord to unplug the appliance. Always unplug the appliance at the mains.
- If the appliance or the power cord is damaged, immediately unplug the power cord or switch off the fuse in the fuse box.
- Call customer services. → Page 9  
Incorrect repairs are dangerous.
- Repairs to the appliance should only be carried out by trained specialist staff.
- Only use genuine spare parts when repairing the appliance.

- If the power cord of this appliance is damaged, it must be replaced by trained specialist staff.  
Ingress of moisture can cause an electric shock.
- Before cleaning, pull out the mains plug or switch off the fuse in the fuse box.
- Do not use steam- or high-pressure cleaners to clean the appliance.



#### **WARNING – Risk of explosion!**

Highly caustic alkaline or highly acidic cleaning agents in conjunction with aluminum parts in the interior of the appliance may cause explosions.

- Never use highly caustic alkaline or highly acidic cleaning agents. In particular, do not use commercial or industrial cleaning agents in conjunction with aluminium parts, e.g. grease filter on extractor hoods.

### **Avoiding material damage**

#### **ATTENTION!**

Condensate may cause corrosion damage.

- To prevent condensation from building up, switch on the appliance during cooking.  
If moisture gets into the controls, this may result in damage.
- Never clean controls with a wet cloth. Incorrect cleaning damages the surfaces.
- Follow the cleaning instructions.
- Do not use harsh or abrasive detergents.
- Clean stainless steel surfaces in the direction of the finish only.
- Never clean controls with stainless steel cleaners.  
Condensation that flows back in may damage the appliance.
- The air extraction duct must be installed with a gradient of at least 1° from the appliance.  
If you put incorrect stress on the design elements, they may break off.
- Do not pull design elements.
- Do not place objects on the design elements or hang objects from them.  
There is a risk of surface damage if you do not peel off the protective film.
- Remove the protective film from all parts of the appliance before using for the first time.  
Painted surfaces are easily damaged.
- Follow the cleaning instructions.  
→ “Cleaning the appliance”, Page 7
- Ensure that the painted surfaces are not scratched.

### **Environmental protection and saving energy**

#### **3.1 Disposing of packaging**

The packaging materials are environmentally compatible and can be recycled.

- Sort the individual components by type and dispose of them separately.

#### **3.2 Saving energy**

If you follow these instructions, your appliance will use less power.

Adjust the fan speed to the amount of steam produced during cooking.

- The lower the fan speed, the less energy is consumed. Only use the intensive mode as required.  
If cooking produces large amounts of steam, select a higher fan speed in good time.
- The odors are distributed around the room less.  
Switch off the lighting if it is no longer required.
- When the lighting is switched off, it does not consume any energy.  
Clean or replace the filters at regular intervals.
- The effectiveness of the filter is retained. Put the cooking lid on.
- The cooking vapours and condensation are reduced.  
Only use the additional functions if required.
- Switching off additional functions reduces power consumption.

## Operating modes

You can use your appliance in air extraction mode or circulating-air mode.

### 4.1 Air extraction mode



The air which is drawn in is cleaned by the grease filters and conveyed to the exterior by a pipe system. The air must not be discharged into a flue that is used for exhausting fumes from appliances burning gas or other fuels (not applicable to appliances that only discharge the air back into the room).

- If the exhaust air is to be conveyed into a non-functioning smoke or exhaust gas flue, you must obtain the consent of the heating engineer responsible.
- If the exhaust air is conveyed through the external wall, a telescopic duct should be used.

### 4.2 Air recirculation mode

The air which is drawn in is cleaned by the grease filters and an odor filter and conveyed back into the room.



To bind odors in circulating-air mode, you must install an odor filter. The different options for operating the appliance in circulating-air mode can be found in our catalogue.



Alternatively, ask your dealer. The required accessories are available from specialist retailers, from customer service or from the Online Shop. Familiarising yourself with your appliance

## Familiarising yourself with your appliance

### 5.1 Control panel


You can use the control panel to configure all functions of your appliance and to obtain information about the operating status.



	Switching the appliance on or off
1	Switching on fan setting 1
2	Switching on fan setting 2
3	Switching on fan setting 3
P	Switching on intensive mode
	Switching the lighting on or off


## Basic operation

### 6.1 Switching on the appliance

**Note:** When the glass panel is folded out, you can use  to switch the appliance on and off.  
Requirement: The glass panel is folded in.

- Fold out the glass panel all the way.  
The appliance starts at fan setting 2 and the lighting switches on.

### 6.2 Switching off the appliance

- Fold in the glass panel as far as it will go or press .  
The ventilation system switches off and the lighting switches off.

### 6.3 Selecting a fan setting

- Press, 1,2 or3 to adjust the fan setting.

### 6.4 Switching on the intensive mode

- Press P.  
After approx. 6 minutes, the appliance automatically switches to fan setting 3.


### 6.5 Switching off intensive mode

- Press 1,2 or 3 . Intensive mode is ended early.

#### 6.6 Switching on the lighting

The lighting can be switched on and off independently of the ventilation system.

- If required, select one of the options:

– If the glass panel is folded out, press .

– If the glass panel is folded in, touch the control panel with the palm of your hand in the center. The lighting switches on.

## 6.7 Switching off the lighting

- If required, select one of the options:
    - If the glass panel is folded out, press .
    - If the glass panel is folded in, touch the control panel with the palm of your hand in the center.
- The lighting switches off.

## Cleaning and servicing

To keep your appliance working efficiently for a long time, it is important to clean and maintain it carefully.

### 7.1 Cleaning products

You can obtain suitable cleaning products from the aftersales service or the online shop.

#### **ATTENTION!**

Unsuitable cleaning products may damage the surfaces of the appliance.

- Do not use harsh or abrasive detergents.
- Do not use cleaning products with high alcohol content.
- Do not use hard scouring pads or cleaning sponges.
- Only use glass cleaners, glass scrapers or stainless steel care products if recommended in the cleaning instructions for the relevant part.
- Wash sponge cloths thoroughly before use.

### 7.2 Cleaning the appliance

Clean the appliance as specified. This will ensure that the different parts and surfaces of the appliance are not damaged by incorrect cleaning or unsuitable cleaning products.



#### **WARNING – Risk of explosion!**

Highly caustic alkaline or highly acidic cleaning agents in conjunction with aluminum parts in the interior of the appliance may cause explosions.

- Never use highly caustic alkaline or highly acidic cleaning agents. In particular, do not use commercial or industrial cleaning agents in conjunction with aluminum parts, e.g. grease filter on extractor hoods.



#### **WARNING – Risk of electric shock!**

Ingress of moisture can cause an electric shock.

- Before cleaning, pull out the mains plug or switch off the fuse in the fuse box.
- Do not use steam- or high-pressure cleaners to clean the appliance.



#### **WARNING – Risk of burns!**

The appliance becomes hot during operation.

- ▶ Allow the appliance to cool down before cleaning.



#### **WARNING – Risk of injury!**

Components inside the appliance may have sharp edges.

- ▶ Carefully clean the appliance interior.



1. Observe the information regarding the cleaning agents.
2. Clean as follows, depending on the surface: – Clean stainless steel surfaces in the direction of the finish using a sponge cloth and hot soapy water.
  - Clean painted surfaces using a damp sponge cloth and hot soapy water.
  - Clean aluminum using a soft cloth and glass cleaner.
  - Clean plastic using a soft cloth and glass cleaner.
  - Clean glass using a soft cloth and glass cleaner.
3. Dry with a soft cloth.
4. Apply a thin layer of the stainless steel cleaning product to stainless steel surfaces using a soft cloth.

You can obtain stainless steel cleaning products from the after-sales service or the online shop.

### 7.3 Cleaning controls



**WARNING** – Risk of electric shock!

Penetrating moisture may cause an electric shock.

► Do not use wet sponge cloths.

1. Observe the information regarding the cleaning agents.
2. Clean using a damp sponge cloth and hot soapy water.
3. Dry with a soft cloth.

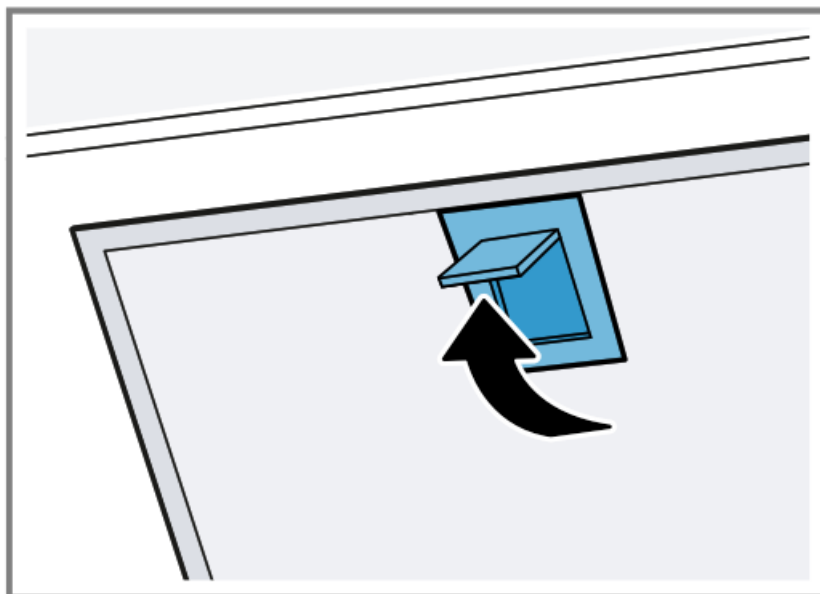
### 7.4 Removing the grease filter

1. Open the glass flap as far as it will go.
2. Switch off the appliance.
3. **ATTENTION!**

Falling grease filters may damage the hob below.

► Grip below the grease filter with one hand.

Open the locks on the grease filters.



4. Remove the grease filters from the holders.

To prevent grease from dripping, hold the grease filter horizontally.

### 7.5 Cleaning grease filters manually

The grease filters filter the grease from the cooking vapour. Regularly cleaned grease filters guarantee a high level of grease removal. We recommend cleaning the grease filters every two months.



#### **WARNING – Risk of fire!**

Fatty deposits in the grease filters may catch fire.

► Clean the grease filters regularly.

Requirement: The grease filters have been removed.

1. Observe the information regarding the cleaning agents.
2. Soak the grease filter in hot soapy water. Use special grease solvent for stubborn dirt. You can obtain grease solvents from after-sales service or the online shop.
3. Use a brush to clean the grease filters.
4. Rinse the grease filters thoroughly.
5. Allow the grease filters to drain.

### 7.6 Cleaning grease filters in the dishwasher

The grease filters filter the grease from the cooking vapor. Regularly cleaned grease filters guarantee a high level of grease removal. We recommend cleaning the grease filters every two months.



#### **WARNING – Risk of fire!**

Fatty deposits in the grease filters may catch fire.

► Clean the grease filters regularly.

#### **ATTENTION!**

The grease filters may become damaged if they are squeezed.

► Do not squeeze the grease filters.

**Note:** When cleaning the grease filter in the dishwasher, light discoloration may occur. This discoloration has no effect on the performance of the metal grease filters.

Requirement: The grease filters have been removed.

1. Observe the information regarding the cleaning agents.
2. Place the grease filters loosely into the dishwasher.  
Do not clean heavily soiled grease filters with utensils.  
Use special grease solvent for stubborn dirt. You can obtain grease solvents from after-sales service or the online shop.
3. Start the dishwasher.  
Select a temperature of no more than 70 °C.
4. Allow the grease filters to drain.

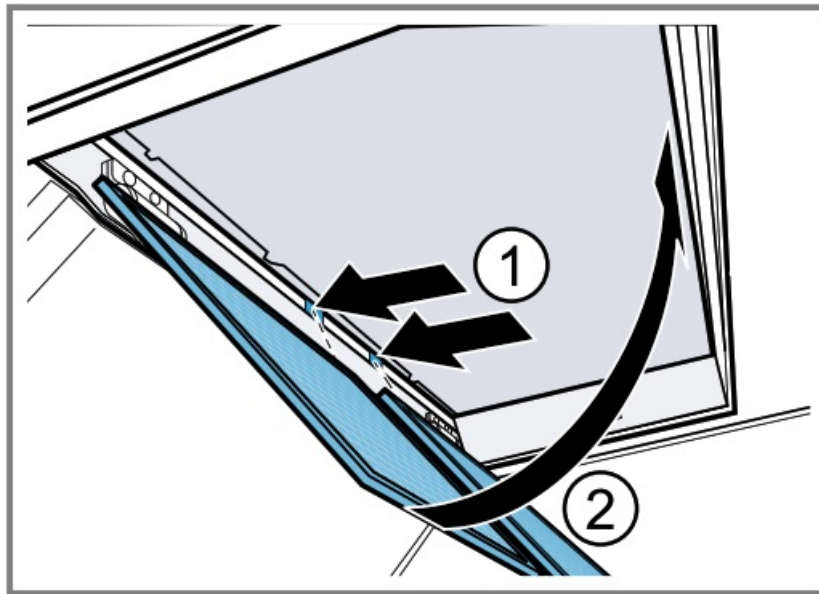
### 7.7 Installing the grease filters

#### **ATTENTION!**

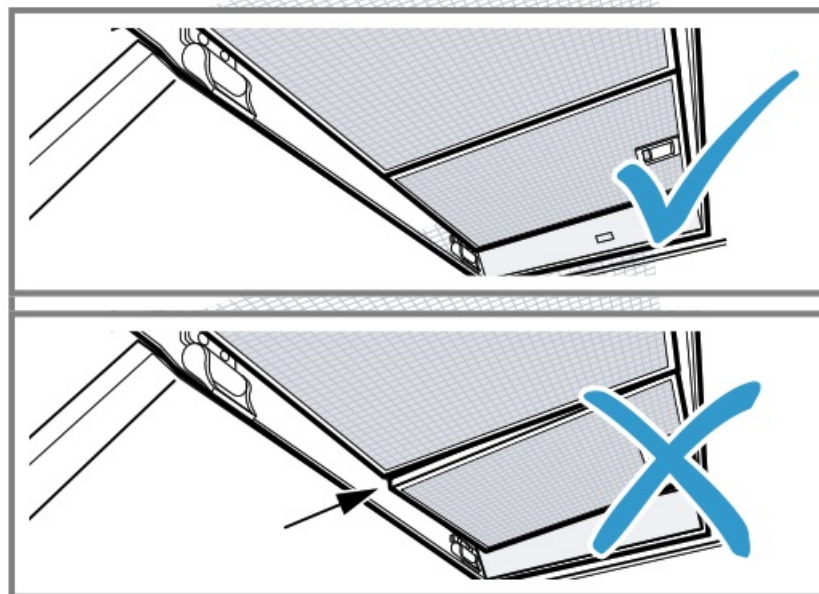
Falling grease filters may damage the hob below.

► Grip below the grease filter with one hand.

1. Open the glass flap as far as it will go.
2. Switch off the appliance.
3. Insert the grease filter on the lower edge.<sup>1</sup>
4. Fold the grease filters upwards and engage the locks.<sup>2</sup>



5. Ensure that the grease filters are inserted correctly.



6. Ensure that the locks engage.

7. Close the glass flap.

## Troubleshooting

You can rectify minor faults on your appliance yourself.

Read the troubleshooting information before contacting after-sales service. This will avoid unnecessary costs.



### **WARNING – Risk of injury!**

Improper repairs are dangerous.

- Repairs to the appliance should only be carried out by trained specialist staff.
- If the appliance is defective, call Customer Service.



### **WARNING – Risk of electric shock!**

Incorrect repairs are dangerous.

- Repairs to the appliance should only be carried out by trained specialist staff.
- Only use genuine spare parts when repairing the appliance.
- If the power cord of this appliance is damaged, it must be replaced by trained specialist staff.

## 8.1 Malfunctions

Fault	Cause and troubleshooting
The appliance is not working.	<p>The mains plug of the power cord is not plugged in.  ▶ Connect the appliance to the power supply.</p> <p>The circuit breaker is faulty.  ▶ Check the circuit breaker in the fuse box.</p> <p>There has been a power cut.  ▶ Check whether the lighting in your kitchen or other appliances are working.</p>
The LED lighting does not work.	<p>Different causes are possible.  ▶ Defective LED lights may be replaced by the manufacturer, their customer service or a qualified technician (electrician) only.  ▶ Call the after-sales service.  → "Customer Service", Page 9</p>

## Disposal

Find out here how to dispose of old appliances correctly.

### 9.1 Disposing of old appliance

Valuable raw materials can be reused by recycling.

1. Unplug the appliance from the mains.
2. Cut through the power cord.
3. Dispose of the appliance in an environmentally friendly manner.

Information about current disposal methods are available from your specialist dealer or local authority.



■ This appliance is labeled in accordance with European Directive 2012/19/EU concerning used electrical and electronic appliances (waste electrical and electronic equipment – WEEE). The guideline determines the framework for the return and recycling of used appliances as applicable throughout the EU.

## Customer Service

If you have any queries on use, are unable to rectify faults on the appliance yourself or if your appliance needs to be repaired, contact Customer Service. Function-relevant genuine spare parts according to the corresponding Ecodesign Order can be obtained from Customer Service for a period of at least 10 years from the date on which your appliance was placed on the market within the European Economic Area.

**Note:** Under the terms of the manufacturer's warranty the use of Customer Service is free of charge. Detailed information on the warranty period and term warranty in your country is available from our aftersales service, your retailer or on our website. If you contact Customer Service, you will require the product number (E-Nº) and the production number (FD) of your appliance. The contact details for Customer Service can be found in the enclosed Customer Service directory or on our website.

### 10.1 Product number (E-Nº) and production number (FD)

You can find the product number (E-Nº) and the production number (FD) on the appliance's rating plate.

Depending on the model, the rating plate can be found:

- Inside the appliance (remove grease filters for access).
- On top of the appliance.

Make a note of your appliance's details and the Customer Service telephone number to find them again quickly.

## Accessories

You can buy accessories from the after-sales service, from specialist retailers or online. Only use original accessories, as these have been specifically designed for your appliance.

Accessories vary from one appliance to another. When purchasing accessories, always quote the exact product number (E no.) of your appliance. → Page 9

You can find out which accessories are available for your appliance in our catalogue, in the online shop or from our after-sales service. [www.neff-international.com](http://www.neff-international.com)

Accessories	Order number
Chimney extension – 187-360 mm	Z51IBN1S1
Chimney extension – 450-854 mm	Z51IBK1S1
Clean Air Standard recirculation kit	Z51IBI6X4
Clean Air Standard odour filter – replacement	Z51IBK1S1
Clean Air Plus air recirculation set	Z51IXC1X6
Clean Air Plus odor filter	Z51IXB1X6
Long Life air recirculation set	Z51ITD1X1
Long Life odor filter	Z51ITP0X0

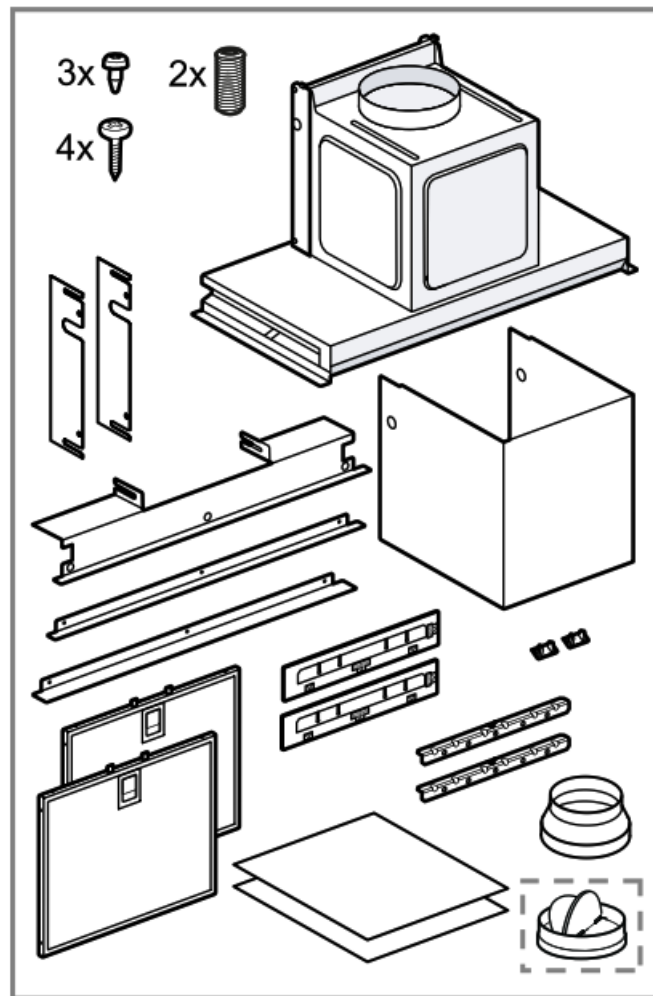
## Installation instructions

Observe this information when installing the appliance.



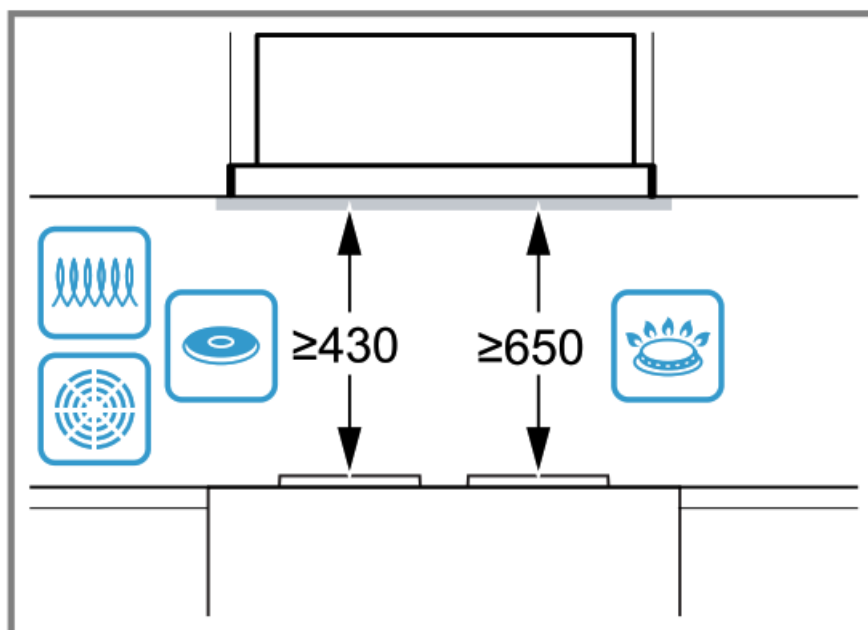
### 12.1 Included with the appliance

After unpacking all parts, check for any damage in transit and completeness of the delivery.



## 12.2 Safety clearances

Comply with the safety clearances for the appliance.



For Australia and New Zealand, the minimum safety clearance above electrical cooktops must be 600 mm.

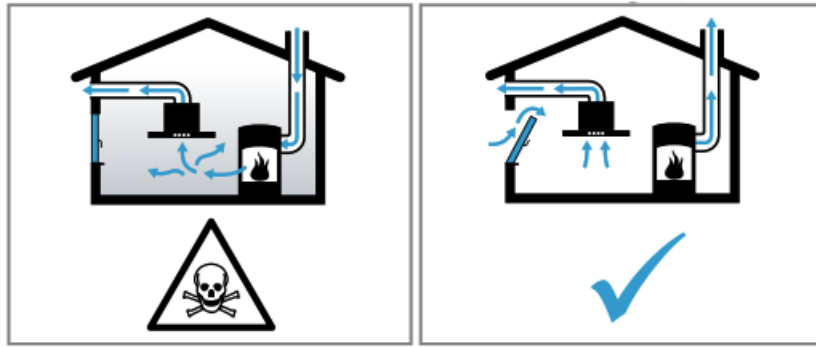
## 12.3 Secure installation

Follow these safety instructions when installing the appliance.

### **WARNING – Risk of poisoning!**

Risk of poisoning from flue gases being drawn back in. Room-air-dependent heat-producing appliances (e.g. gas,

oil, wood or cooperated heaters, continuous flow heaters or water heaters) obtain combustion air from the room in which they are installed and discharge the exhaust gases into the open through an exhaust gas system (e.g. a chimney). With the extractor hood switched on, air is extracted from the kitchen and the adjacent rooms. Without an adequate supply of air, the air pressure falls below atmospheric pressure. Toxic gases from the flue or the extraction shaft are sucked back into the living space.



- Always ensure adequate fresh air in the room if the appliance is being operated in exhaust air mode at the same time as room-air-dependent heat-producing appliance is being operated.
- It is only possible to safely operate the appliance if the pressure in the room in which the heating appliance is installed does not drop more than 4 Pa (0.04 bar) below atmospheric pressure. This can be achieved whenever the air needed for combustion is able to enter through openings that cannot be sealed, for example in doors, windows, incoming/exhaust air wall boxes or by other technical means. An incoming/exhaust air wall box alone does not ensure compliance with the limit.
- In any case, consult your responsible chimney sweep. They are able to assess the house's entire ventilation setup and will suggest suitable ventilation measures to you.
- Unrestricted operation is possible if the appliance is operated exclusively in circulating-air mode. Risk of poisoning from flue gases being drawn back in.
- If an extractor hood with an open-flued heat production source is installed, the power supply for the extractor hood must be provided with a suitable safety switch.  
Risk of poisoning from flue gases being drawn back in.
- Do not emit the exhaust air into a smoke or exhaust gas flue that is in operation.
- Do not emit the exhaust air into a shaft that is used to ventilate installation rooms for heat-producing appliances.
- If the exhaust air is to be conveyed into smoke or exhaust gas flue, you must obtain the consent of the heating engineer responsible.



**WARNING – Risk of suffocation!**

Children may put packaging material over their heads or wrap themselves up in it and suffocate.

- Keep packaging material away from children.
- Do not let children play with packaging material.



**WARNING – Risk of fire!**

Grease deposits in the grease filter may catch fire.

- The specified safety clearances must be complied with in order to prevent a build-up of heat.
- Observe the specifications for your cooking appliances. If the installation instructions for the cooking appliances specify a different clearance, the larger of the two must always be provided for. If gas hobs and electric hobs are operated together, the largest specified clearance applies. Grease deposits in the grease filter may catch fire.
- Never work with naked flames close to the appliance (e.g. flambéing).
- Do not install the appliance near a heat-producing appliance for solid fuel (e.g. wood or coal) unless a closed, non-removable cover is available. There must be no flying sparks.



#### **WARNING – Risk of injury!**

Components inside the appliance may have sharp edges.

- Wear protective gloves.  
The appliance may fall down if it has not been properly fastened in place.
- All fastening components must be fixed firmly and securely in place.  
Changes to the electrical or mechanical assembly are dangerous and may lead to malfunctions.
- Do not make any changes to the electrical or mechanical assembly.

#### **WARNING – Risk of electric shock!**

Sharp-edged components inside the appliance may damage the connecting cable.

- Do not kink or trap the connecting cable. If the appliance or the power cord is damaged, this is dangerous.
- Never operate a damaged appliance.
- Never pull on the power cord to unplug the appliance. Always unplug the appliance at the mains.
- If the appliance or the power cord is damaged, immediately unplug the power cord or switch off the fuse in the fuse box.
- Call customer services. → Page 9 Incorrect repairs are dangerous.
- Repairs to the appliance should only be carried out by trained specialist staff.
- Only use genuine spare parts when repairing the appliance.
- If the power cord of this appliance is damaged, it must be replaced by trained specialist staff.  
Incorrect installation is dangerous.
- Connect and operate the appliance only in accordance with the specifications on the rating plate.
- Connect the appliance to a power supply with alternating current only via a properly installed socket with earthing.
- The protective conductor system of the domestic electrical installation must be properly installed.
- Never equip the appliance with an external switching device, e.g. a timer or remote control.
- When the appliance is installed, the main plug of the power cord must be freely accessible. If free access is not possible, an all-pole isolating switch must be installed in the permanent electrical installation according to the conditions of Overvoltage Category III and according to the installation regulations.
- When installing the appliance, check that the power cable is not trapped or damaged.

## **12.4 General information**

Follow these general instructions during the installation.



- For the installation, observe the currently valid building regulations and the regulations of the local electricity and gas suppliers.
- When discharging the exhaust air, the official and legal regulations, such as the regional building code., must be observed.
- The width of the extractor hood must correspond at least with the width of the hob.
- To optimally detect the cooking vapors, install the appliance in the middle of the hob.
- In order to freely access the appliance for servicing, select an easy-to-reach installation site.
- The surfaces of the appliance are sensitive. Avoid damaging them during installation.

### 12.5 Instructions for the electrical connection

In order to safely connect the appliance to the electrical system, follow these instructions.



#### **WARNING – Risk of electric shock!**

It must always be possible to disconnect the appliance from the electricity supply. The appliance must only be connected to a protective contact socket that has been correctly installed.

- The mains plug for the main power cable must be easily accessible after the appliance is installed.
- If this is not possible, an all-pole isolating switch must be integrated into the permanent electrical installation according to the conditions of overvoltage category III and according to the installation regulations.
- The permanent electrical installation must only be wired by a professional electrician. We recommend installing a residual-current circuit breaker (RCCB) in the appliance's power supply circuit. Sharp-edged components inside the appliance may damage the connecting cable.
- Do not kink or trap the connecting cable.
- The connection data can be found on the rating plate. → Page 9
- The connecting cable is approx. 1.30 m long.
- This appliance complies with the EC interference suppression regulations.
- The appliance corresponds to protection class 1.

You should therefore only use the appliance with a protective earth connection.

- Do not connect the appliance to the power supply during installation.
- Ensure that protection against contact is guaranteed during installation.

### 12.6 Information on the installation situation

- Install this appliance in a kitchen cupboard.
- To install additional special accessory parts, observe the enclosed installation instructions.

### 12.7 Instructions for the exhaust air pipe

The appliance manufacturer does not provide any warranty for faults attributable to the pipeline.

- Use a short, straight exhaust air pipe with as large a pipe diameter as possible.
- Long, rough exhaust air pipes, many pipe bends or small pipe diameters reduce the suction power and increase the fan noise.
- Use an exhaust pipe that is made of non-combustible material.
- To prevent condensate from returning, fit the exhaust pipe with a 1° gradient from the appliance.

### Flat ducts

Use flat ducts with an inner cross-section that corresponds to the diameter of the round pipes:

- A diameter of 150 mm corresponds to approx. 177 cm<sup>2</sup>.
- A diameter of 120 mm corresponds to approx. 113 cm<sup>2</sup>.
- Use sealing strips for different pipe diameters.
- Do not use any flat ducts with sharp bends.

### Round pipes

Use round pipes with an inner diameter of 150 mm (recommended) or at least 120 mm.

#### 12.8 Instructions for the air extraction mode

For air extraction mode, a one-way flap should be installed.

#### Notes

- If a one-way flap is not included with the appliance, one can be ordered from a specialist retailer.
- If the exhaust air is conveyed through the external wall, a telescopic duct should be used.

### 12.9 Installation

#### Checking the units

1. Check whether the fitted unit is level and has sufficient load-bearing capacity.

The maximum weight of the appliance is 12 kg.

Do not place items weighing more than 10 kg on each side of the appliance.

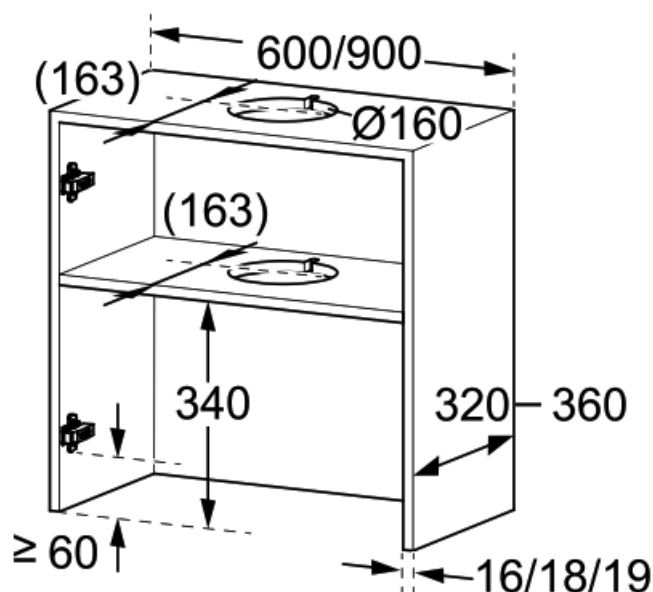
Note: Note the furniture manufacturer's specifications with regard to the load-bearing capacity of the fitted unit.

2. Ensure that the fitted unit is heat-resistant up to 90 °C.
3. Ensure that the fitted unit is still stable after the cutouts have been made.

#### Preparing the units

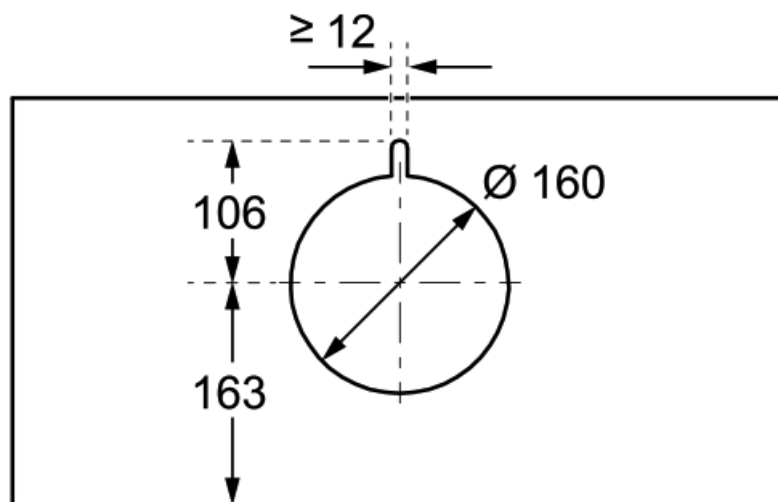
Requirement: The unit is suitable for installation.

1. Cover the hob to prevent damage.
2. Detach the cabinet door.
3. Make the cut-out for the exhaust pipe in the cabinet.



4. Make the cut-out for the exhaust pipe in the intermediate floor.

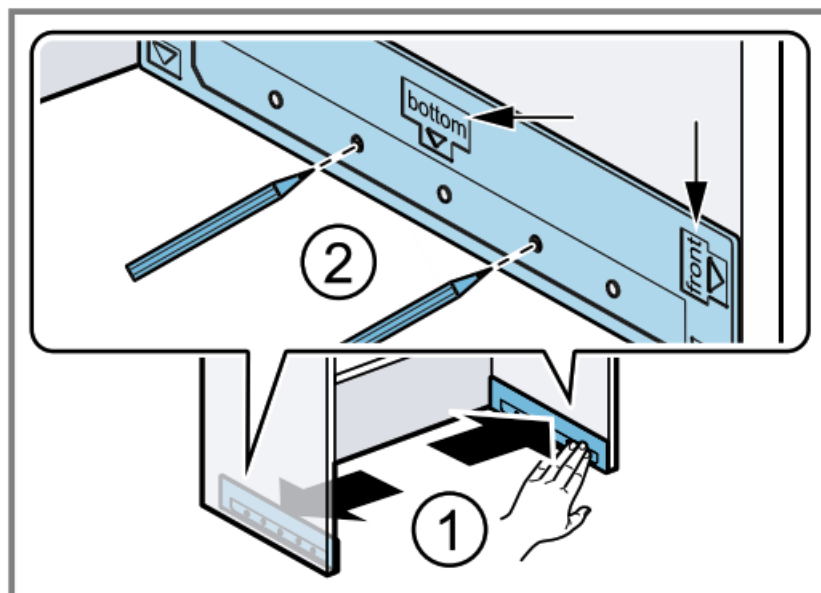
– Make the recess for the mains connection.



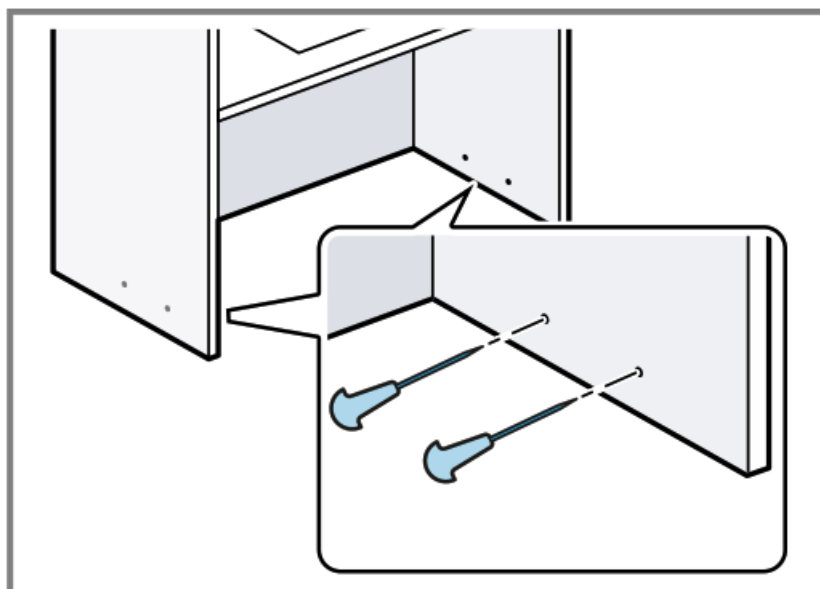
5. Ensure that the fitted unit is still stable after the cutouts have been made.

Place the installation aid on the inside of cabinet 1 and mark the fixing points .

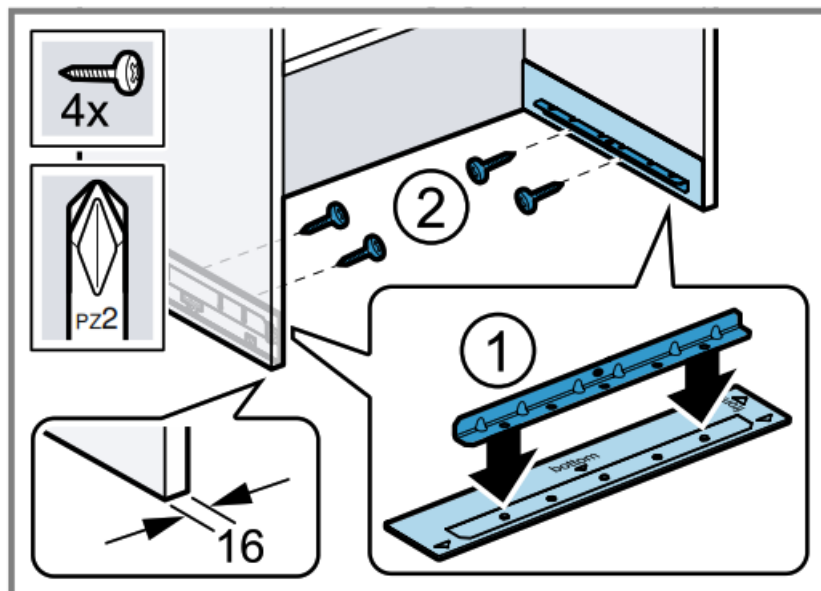
6. Use a bradawl to mark the fixing points2.



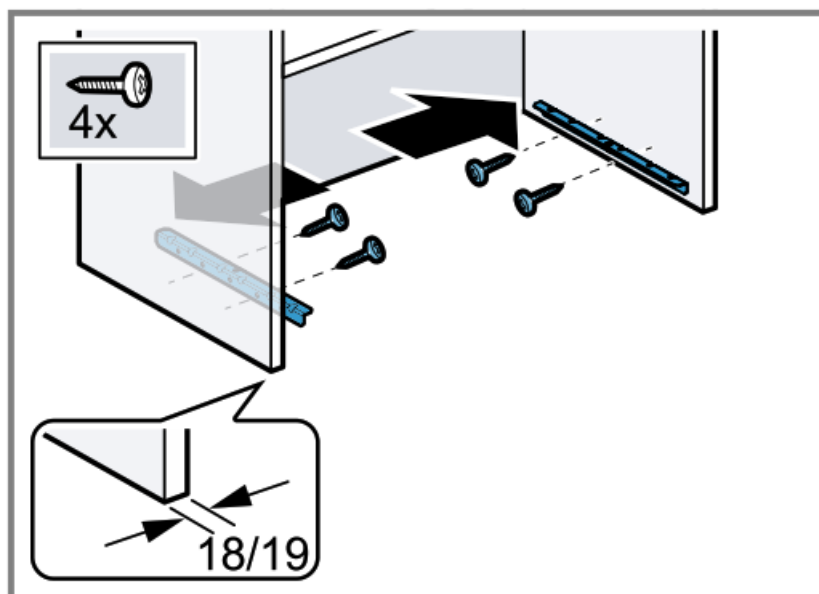
7. For a wall thickness of 16 mm: Place the installation aids on the rails and screw the rails into the side walls of the cabinet .



8. For a wall thickness of 18 mm and 19 mm: Screw in the rails without the installation aid.



9. For a wall thickness of 18 mm and 19 mm: Screw in the rails without the installation aid.



## Preparing the appliance

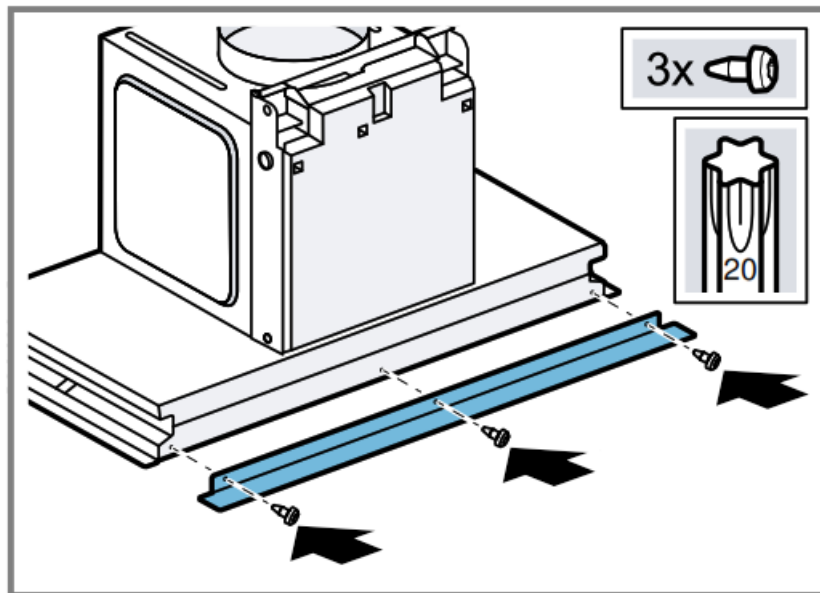
### 1. Note:

Avoid damaging sensitive surfaces when installing the appliance.

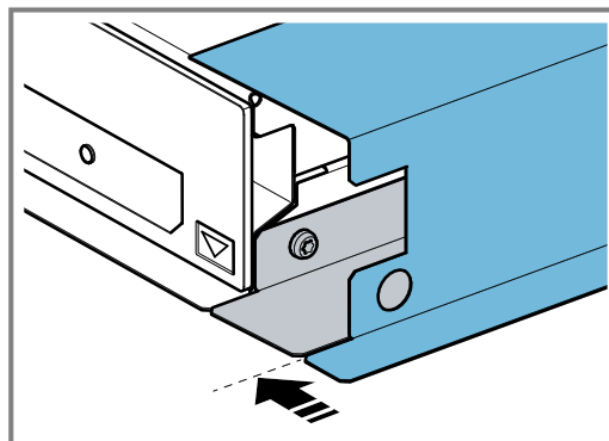
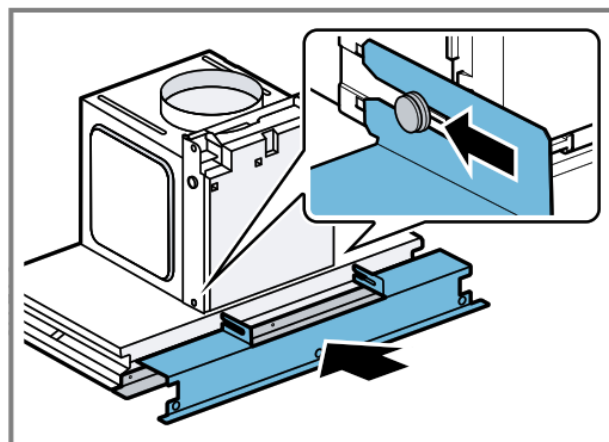
For a cabinet depth (outer dimension) between 320 mm and 340 mm, use the narrow wall filler strip.

For a cabinet depth (outer dimension) between 340 mm and 360 mm, use the wide wall filler strip.

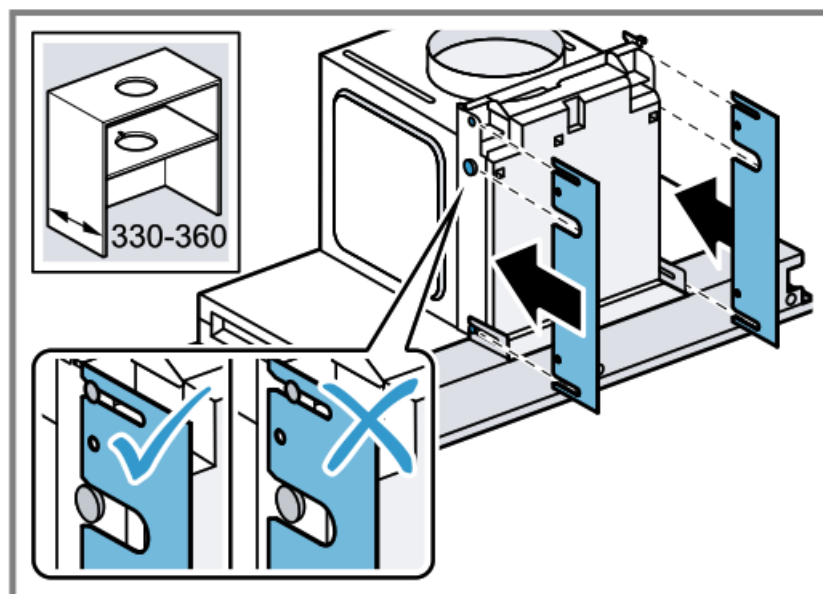
Screw the lower wall filler strip onto the appliance.



2. Mount the upper wall filler strip.

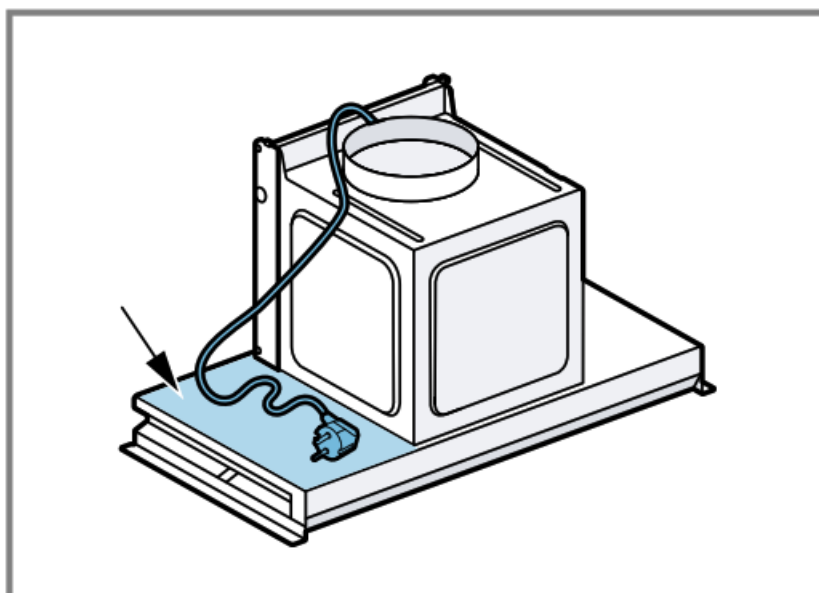


3. For a cabinet depth (outer dimension) between 330<sup>0</sup>mm and 360<sup>0</sup>mm, mount the channel depth adjustment.

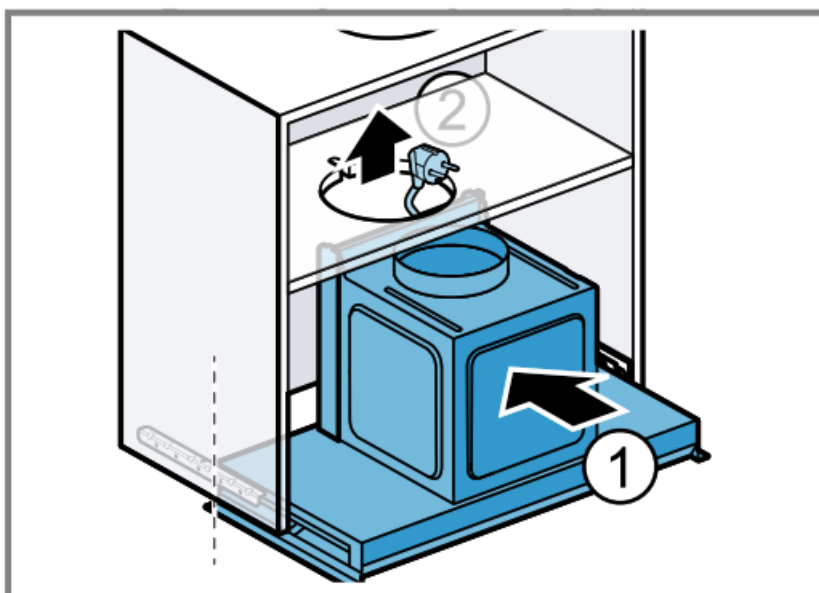


### Installing the appliance

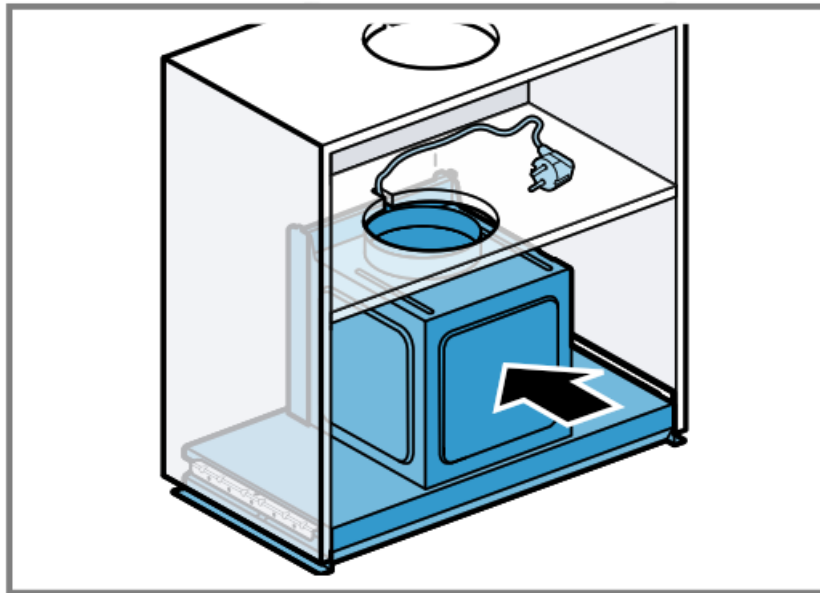
1. Place the mains plug to the side of the appliance.



2. Slide the appliance up to at least halfway into the rails and guide the mains plug through the cut-out 2.

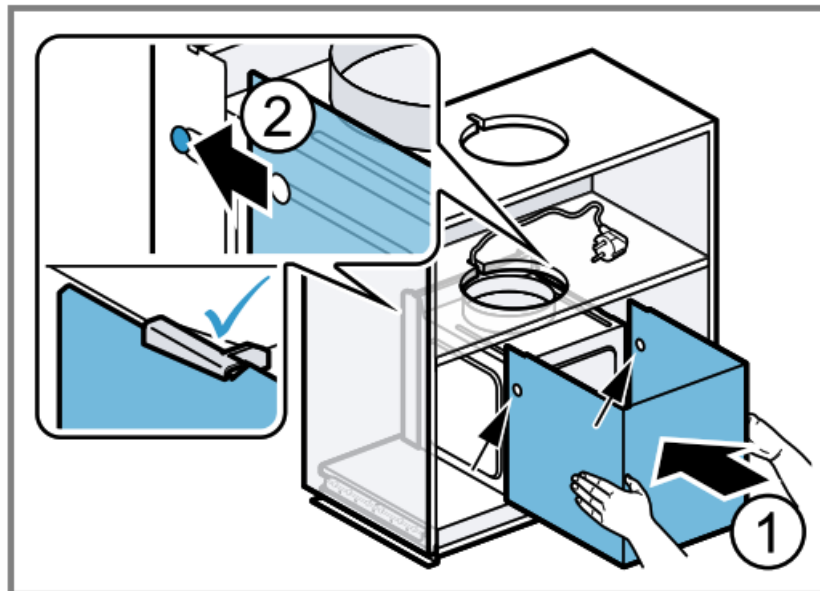


3. Slide the appliance as far as it will go into the cabinet.

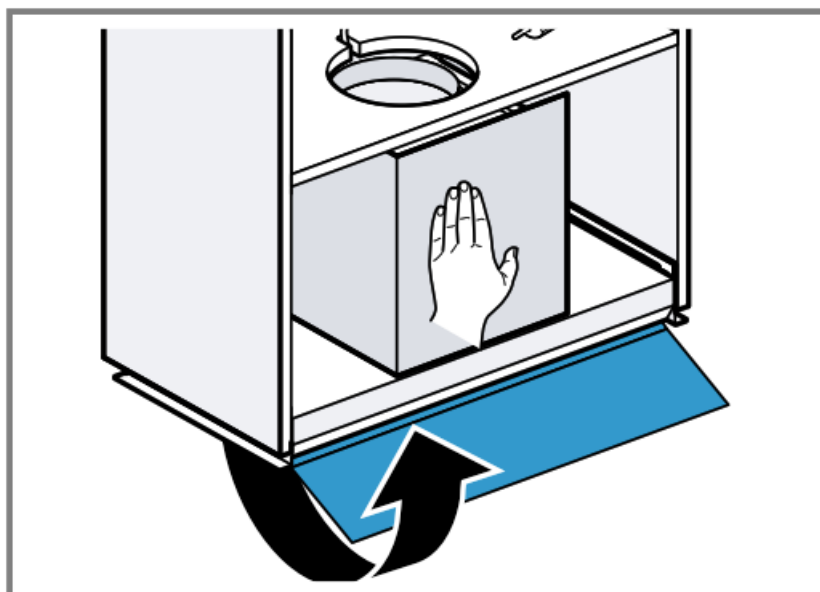


4. Fit the ducting.

5. **Note:** Carefully position the channel in order to protect the appliance against scratches. Gently push the channel against the fan box using both hands and slide it back until the channel clicks into place .

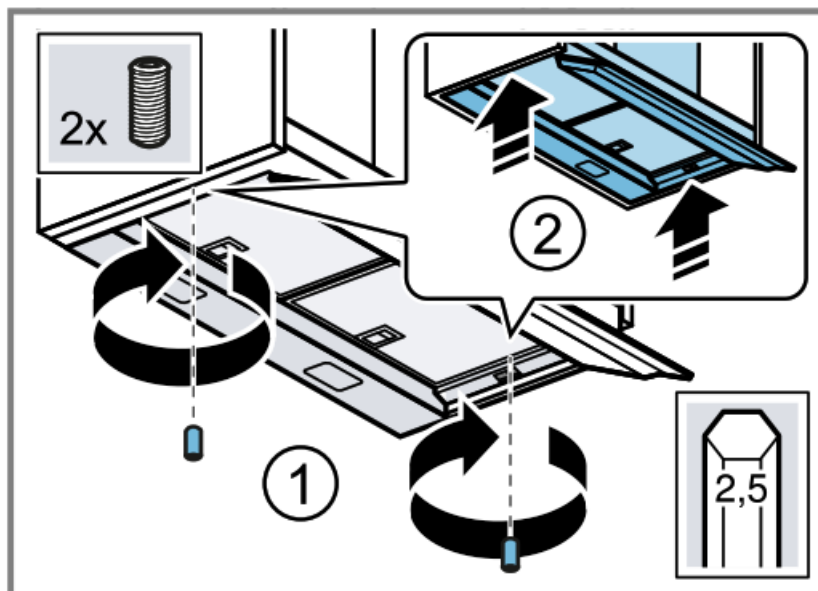


6. Gently push against the appliance with one hand and carefully open the glass panel.

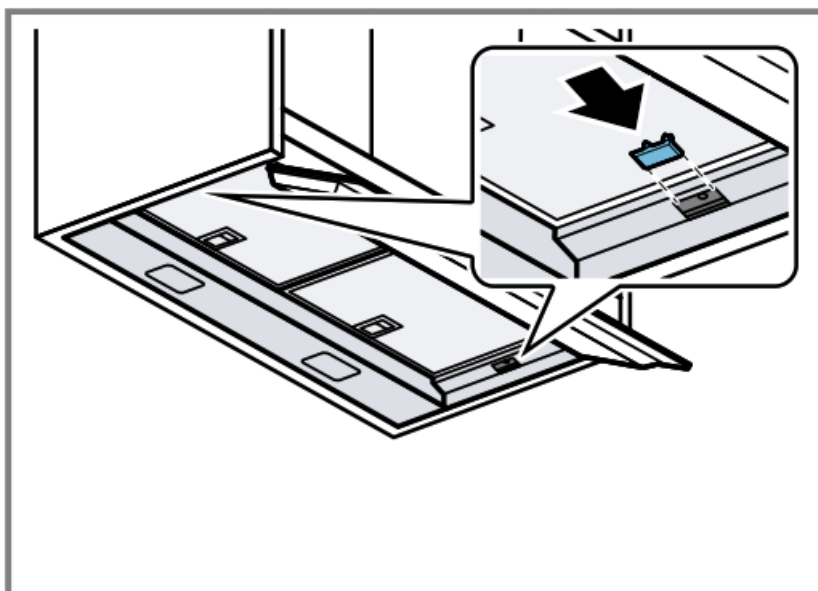


7. **Note:** Ensure that the front of the appliance does not protrude over the front of the cabinet after it is screwed in.

Tighten the threaded pins through the recess in the rail hand-tight until the appliance is flush with the cabinet.



8. Insert the covers.



9. Insert the mains plug.

10. Remove the protective film from the grease filters.

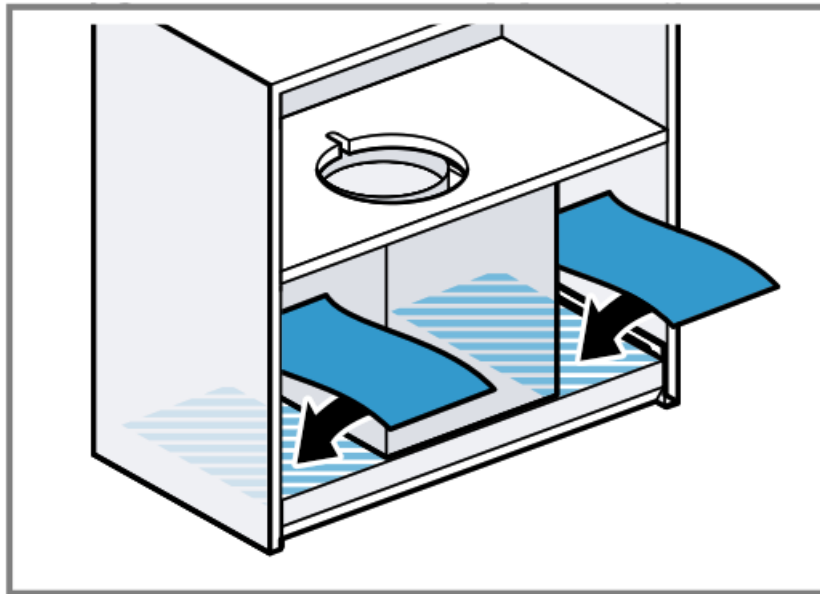
11. Refit the cabinet door.

12. **Note:** Ensure that the safety mat does not protrude over the front of the appliance.

Measure the flat surface and trim the safety mats to size.

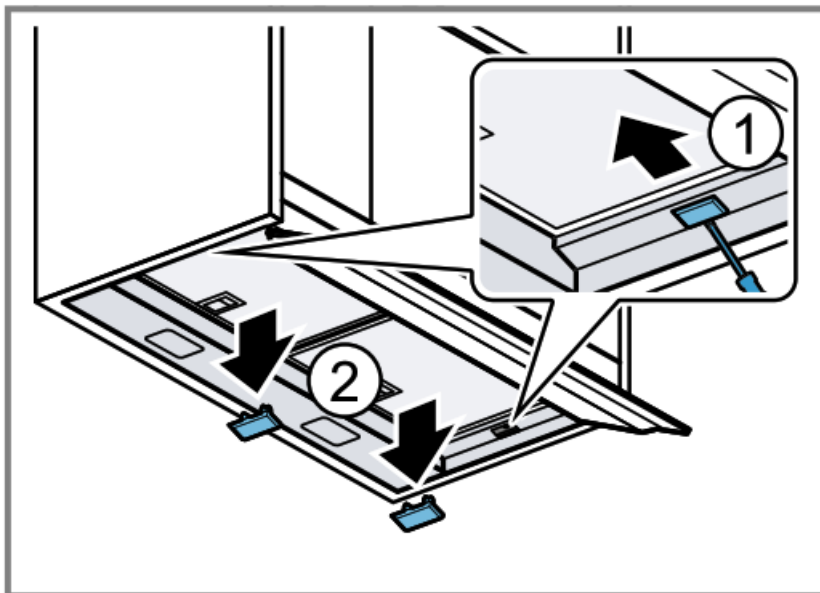
13. Insert the safety mats.



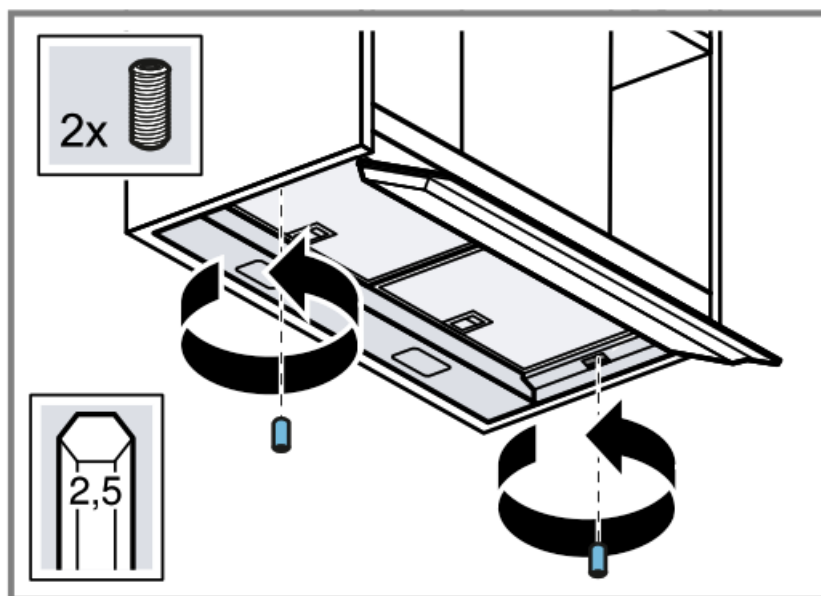


### Removing the appliance

1. Unplug the mains plug.
2. Detach the cabinet door.
3. **Note:** Before removing the appliance, remove any objects from the shelf. Carefully remove the covers.

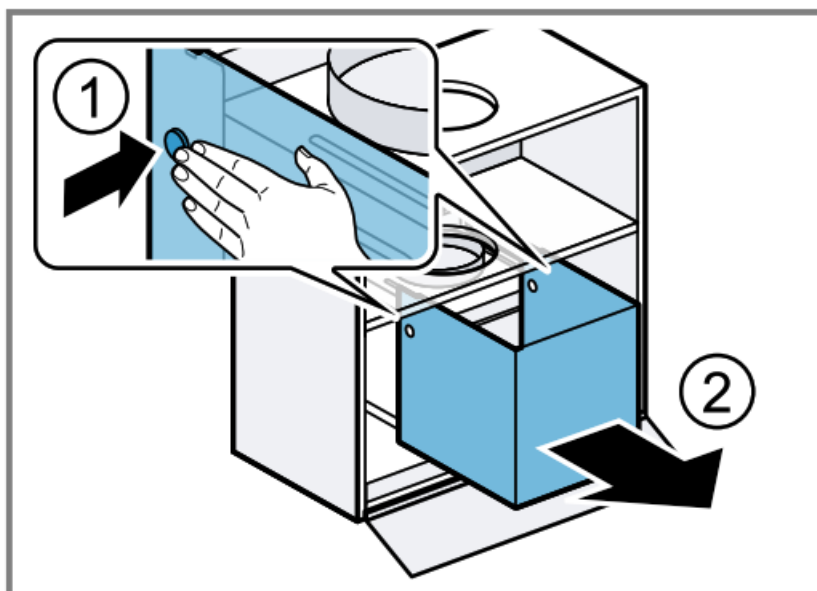


4. Open the glass panel and unscrew the threaded pins in the rail.



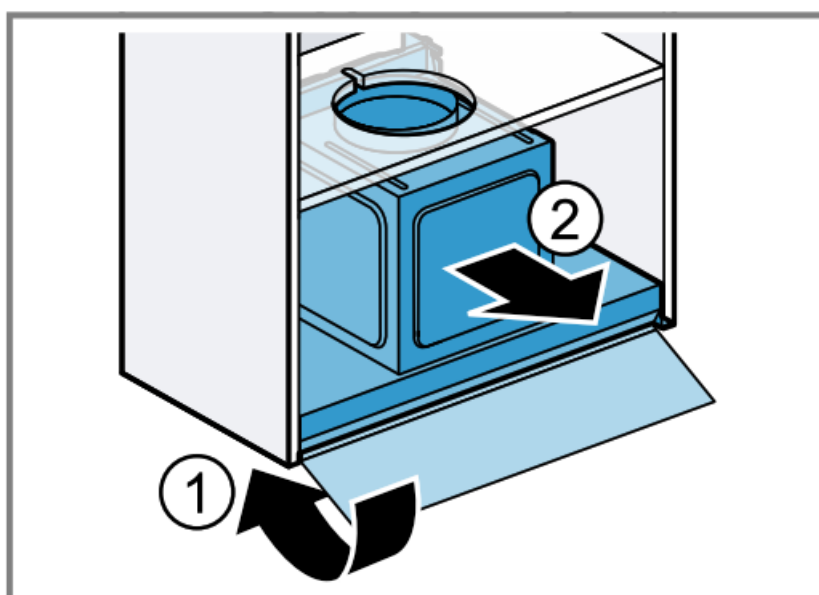
5. Remove the safety mats on both sides.

6. Push in the two locking points at the side and carefully remove the duct .

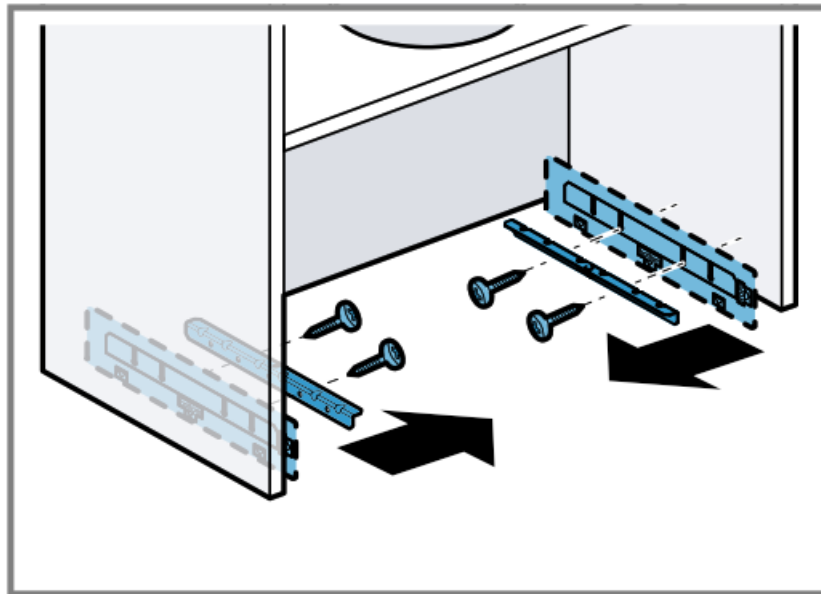


7. Loosen the pipework.

8. Close glass panel 1 and remove appliance 2.



9. Unscrew the rails and, if used, unscrew the installation aids.



<http://www.NEFF-Home.com>



**BSH Hausgeräte GmbH  
Carl-Wery-Straße 34**

**81739 München, GERMANY Valid within Great Britain: Imported to Great Britain by BSH Home Appliances Ltd.**

**Grand Union House Old Wolverton Road Wolverton, Milton Keynes MK12 5PT  
United Kingdom  
9001620357 020119**

**Documents / Resources**



### [Neff D65XAM2S0 Extractor hood](#) [pdf] User Manual

D65XAM2S0 Extractor hood, D65XAM2S0, Extractor hood, D65XAM2S0B, D95XAM2S0, D95XAM2S0B

## References

- [NEFF international - Quality built-in kitchen appliances](#)