

nedis
WIFIZBT10CWT
Zigbee and
Bluetooth Gateway



nedis WIFIZBT10CWT Zigbee and Bluetooth Gateway User Guide

[Home](#) » [nedis](#) » nedis WIFIZBT10CWT Zigbee and Bluetooth Gateway User Guide 

Contents

- 1 nedis WIFIZBT10CWT Zigbee and Bluetooth Gateway
- 2 Product Usage Instructions
- 3 Specifications
- 4 Intended use
- 5 Main parts
- 6 Safety instructions
- 7 Installing the Nedis SmartLife app
- 8 Connecting to the app
- 9 CONTACT
- 10 FAQ
- 11 Documents / Resources
 - 11.1 References

nedis

nedis WIFIZBT10CWT Zigbee and Bluetooth Gateway



Product Usage Instructions

- Download the Nedis Smartlife app for Android or iOS on your phone via Google Play or the Apple App Store.
- Open the Nedis Smartlife app on your phone.
- Create an account with your e-mail address and tap Continue.
- Enter the received verification code.
- Create a password and tap Done.
- Tap Add Home to create a SmartLife Home.
- Set your location, choose the rooms you want to connect with, and tap Done.
- Tap + in the Nedis SmartLife app.
- Select the product type you want to add from the list.
- Plug the product into a power outlet. The status indicator LED A2 blinks to indicate the product is in pairing mode.
- If not, press and hold the function button A3 for 5 seconds to manually enter pairing mode.
- Tap Next step in the app.
- Enter the Wi-Fi network data and tap Confirm.
- Type in a name for the product and tap Done. The product is now ready for use.

Note

- For more information on how to connect and use the different sensors with the product, consult the manual of the sensor.
- Do not attempt to repair the product.
- If the product does not operate correctly, replace it with a new product.

Specifications

Product	Zigbee & Bluetooth® Gateway
Article number	WIFIZBT10CWT
Input power	90 – 250 VAC
Zigbee transmission protocol	IEEE802.15.4
Wi-Fi transmission protocol	802.11bgn
Frequency range	2400 – 2484 MHz
Transmission distance	Up to 35 m
Maximum transmit power	15.07 dBm
Antenna gain	1.0 dBi
Operating temperature	-10 °C – 40 °C
Operating humidity	< 95 % RH
OS support	Android, iOS

Quick start guide

Zigbee & Bluetooth® Gateway

- For more information, see the extended manual online: ned.is/wifizbt10cwt

Intended use

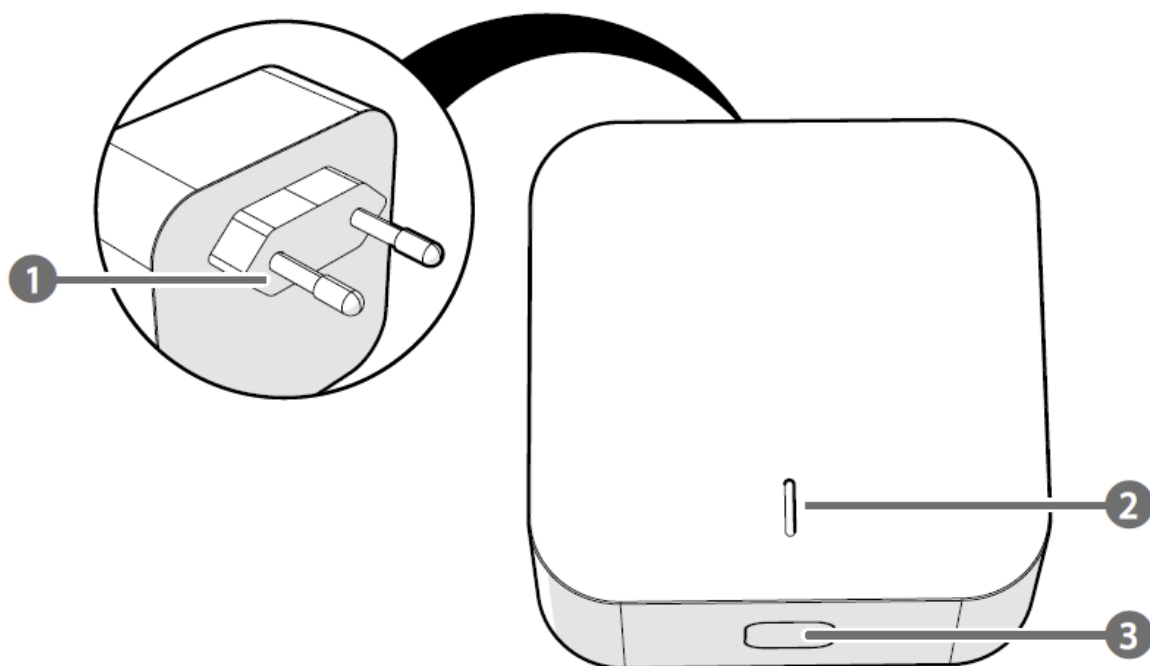
- This product is intended to connect multiple products to the Nedis SmartLife app via a wireless Zigbee or Bluetooth® connection.
- Any modification of the product may have consequences for safety, warranty, and proper functioning.
- The product is intended for indoor use only.
- The product is not intended for professional use.

Main parts

Main parts (image A)

1. Plug
2. Status indicator LED
3. Function button

A



Safety instructions

WARNING

- Ensure you have fully read and understood the instructions in this document before you install or use the product. Keep the packaging and this document for future reference.
- Only use the product as described in this document.
- Do not use the product if a part is damaged or defective. Replace a damaged or defective product immediately.
- Do not drop the product, and avoid bumping.
- This product may only be serviced by a qualified technician for maintenance to reduce the risk of electric shock.
- Do not expose the product to water or moisture.
- Unplug the product from the power source and other equipment if problems occur.
- Disconnect the product from the power source before service and when replacing parts.
- Children should be supervised to ensure that they do not play with the product.
- Only power the product with the voltage corresponding to the markings on the product.
- Some wireless products may interfere with implantable medical devices and other medical equipment, such as pacemakers, cochlear implants, and hearing aids.
- Consult the manufacturer of your medical equipment for more information.
- Do not use the product at locations where the use of wireless devices is prohibited due to potential interference with other electronic devices, which may cause safety hazards.

Installing the Nedis SmartLife app

1. Download the Nedis Smartlife app for Android or iOS on your phone via Google Play or the Apple App Store.
2. Open the Nedis Smartlife app on your phone.
3. Create an account with your e-mail address and tap Continue.
4. Enter the received verification code.
5. Create a password and tap Done.
6. Tap Add Home to create a SmartLife Home.
7. Set your location, choose the rooms you want to connect with, and tap Done.

Connecting to the app

1. Tap + in the Nedis SmartLife app.
2. Select the product type you want to add from the list.
3. Plug the product into a power outlet.
The status indicator LED A2 blinks to indicate the product is in pairing mode.
4. If not, press and hold the function button A3 for 5 seconds to manually enter pairing mode.
5. Tap Next step in the app.
6. Enter the Wi-Fi network data and tap Confirm.
7. Type in a name for the product and tap Done.

The product is now ready for use.

4 For more information on how to connect and use the different sensors with the product, consult the manual of the sensor.

Do not attempt to repair the product. If the product does not operate correctly, replace it with a new product.

Declaration of Conformity

- We, Nedis B.V., declare as a manufacturer that the product WIFIZBT10CWT from our brand Nedis®, produced in China, has been tested according to all relevant CE standards and regulations and that all tests have been passed successfully. This includes, but is not limited to the RED 2014/53/EU regulation.
- The complete Declaration of Conformity (and the safety datasheet if applicable) can be found and downloaded via nedis.com/wifizbt10cwt#support

CONTACT

Nedis BV

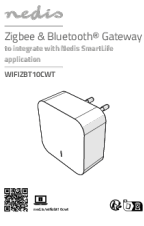
- Reitscheweg 1-7, 5232 BX 's-Hertogenbosch, the Netherlands. www.nedis.com. ned.is/wifizbt10cwt



FAQ

- **How can I find more information about the product?**
 - You can refer to the extended manual online at ned.is/wifizbt10cwt for more details.
- **What should I do if the product does not operate correctly?**
 - If the product does not function as expected, it is recommended to replace it with a new product rather than attempting to repair it yourself.
- **Where can I find the Declaration of Conformity?**
 - The complete Declaration of Conformity can be found and downloaded via nedis.com/wifizbt10cwt#support.

Documents / Resources

	<p>nedis WIFIZBT10CWT Zigbee and Bluetooth Gateway [pdf] User Guide WIFIZBT10CWT, WIFIZBT10CWT Zigbee and Bluetooth Gateway, Zigbee and Bluetooth Gateway, Bluetooth Gateway, Gateway</p>
---	---

References

-  [Nedis | Your wholesaler of consumer electronics](#)
- [User Manual](#)

Manuals+, Privacy Policy

This website is an independent publication and is neither affiliated with nor endorsed by any of the trademark owners. The "Bluetooth®" word mark and logos are registered trademarks owned by Bluetooth SIG, Inc. The "Wi-Fi®" word mark and logos are registered trademarks owned by the Wi-Fi Alliance. Any use of these marks on this website does not imply any affiliation with or endorsement.