

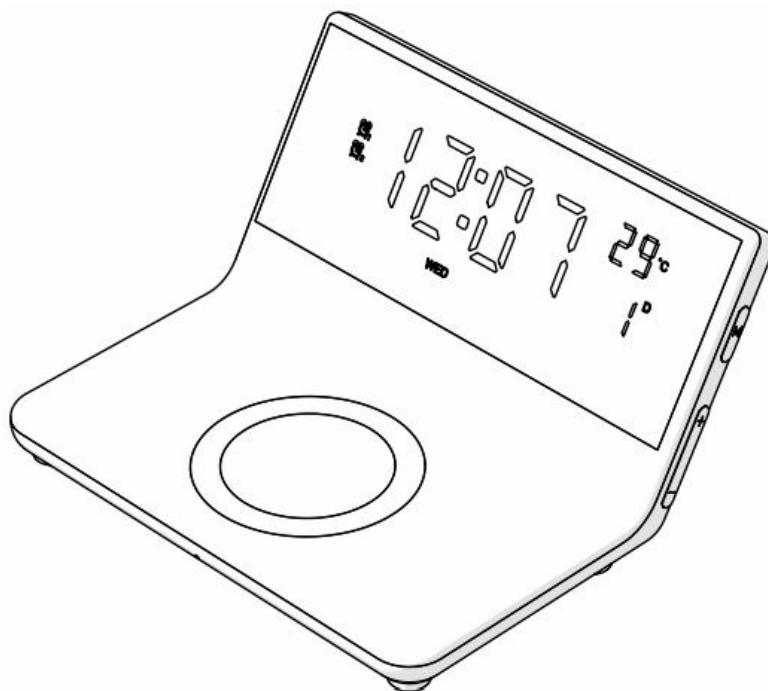


## Contents [ [hide](#) ]

- 1 [Nedis WCACQ20BK-WCACQ20WT Alarm Clock](#)
- 2 [Product Information](#)
- 3 [Product Usage Instructions](#)
- 4 [Intended use](#)
- 5 [Main parts](#)
- 6 [Safety instructions](#)
- 7 [Replacing the battery](#)
- 8 [Connecting to a power supply](#)
- 9 [Setting Up](#)
- 10 [Wireless charging](#)
- 11 [Declaration of Conformity](#)
- 12 [Specifications](#)
- 13 [FAQ \(Frequently Asked Questions\)](#)
- 14 [Documents / Resources](#)
  - 14.1 [References](#)



## **Nedis WCACQ20BK-WCACQ20WT Alarm Clock**



## Product Information

### Specifications:

- **Model:** WCACQ20BK / WCACQ20WT
- Alarm Clock with temperature display
- Wireless charging capability for Qi-compatible devices
- USB-C input for power supply
- Display brightness adjustment

## Product Usage Instructions

### Safety Instructions

**WARNING:** The battery is for backup purposes only. Keep the product connected to a power supply.

### Connecting to a Power Supply:

1. Insert the provided USB-C-USB cable into the USB-C input.
2. Connect the other end of the cable to a USB adapter and then to a power outlet.
3. The product is ready for use when all indicator lights are on.

### Setting Functions

- **Setting the Temperature Unit:** Double-press the snooze button to switch between Celsius and Fahrenheit.
- **Setting Display Brightness:** Use the At or Ay buttons to adjust the display brightness.

## **Alarm Functions**

Snoozing and Switching Off Alarm:

- The alarm sounds for 3 minutes and then switches off automatically.
- Press the snooze button to snooze the alarm for 5 minutes.
- Indicator A8 or A9 blinks in snooze mode.
- Press the + button to switch off alarm 1 for the day.

## **Wireless Charging**

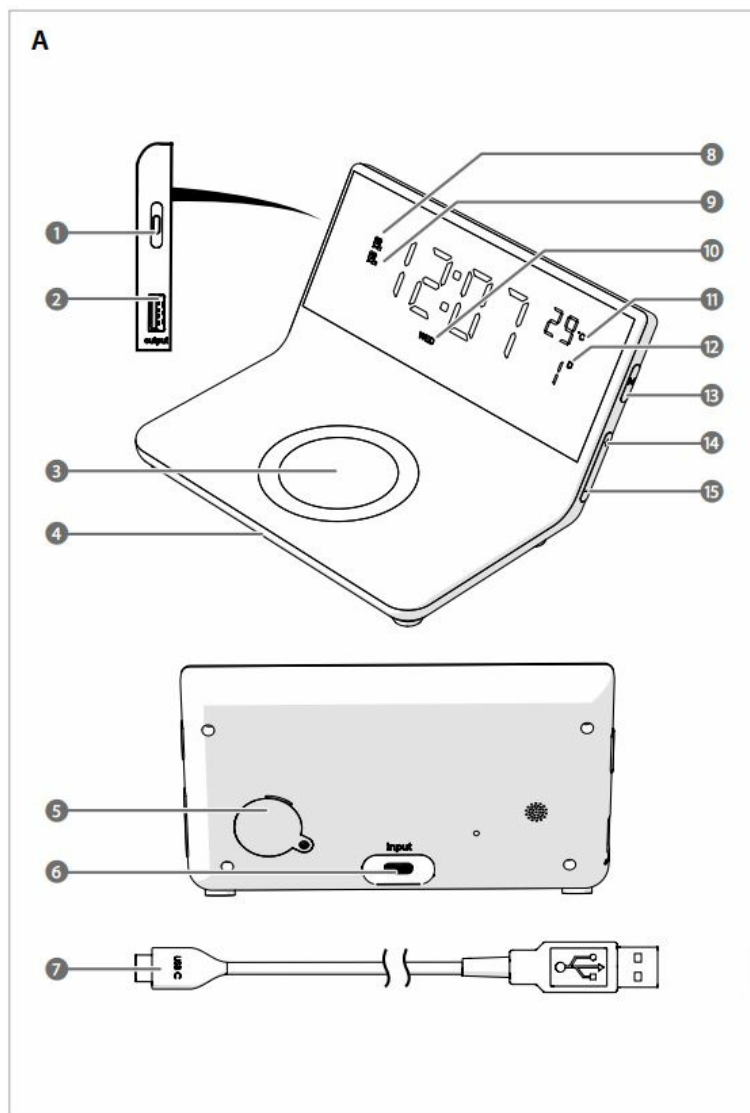
Using Wireless Charging:

1. Place your Qi-compatible device on the wireless charging area.
2. A4 indicator switches on and off based on charging status.
3. Avoid placing metal objects or magnetic cards near the charger.
4. If a foreign object is detected, wireless charging is disabled.

## **Intended use**

- The Nedis WCACQ20BK / WCACQ20WT is an alarm clock with a built-in wireless charger. The display also shows the date and temperature.
- The product is intended for indoor use only.
- The product is intended for use in household environments for typical housekeeping functions that may also be used by non-expert users for typical housekeeping functions, such as: shops, offices other similar working environments, farm houses, by clients in hotels, motels and other residential type environments and/or in bed and breakfast type environments.
- Any modification of the product may have consequences for safety, warranty, and proper functioning.

## **Main parts**



1. Snooze button
2. USB-A output
3. Wireless charging area
4. Indicator LED
5. Battery compartment
6. USB-C input
7. USB – USB-C cable
8. Alarm 1 indicator
9. Alarm 2 indicator
10. Day of the week
11. Temperature indicator
12. Date
13. Time button
14. + Button
15. – Button

## Safety instructions

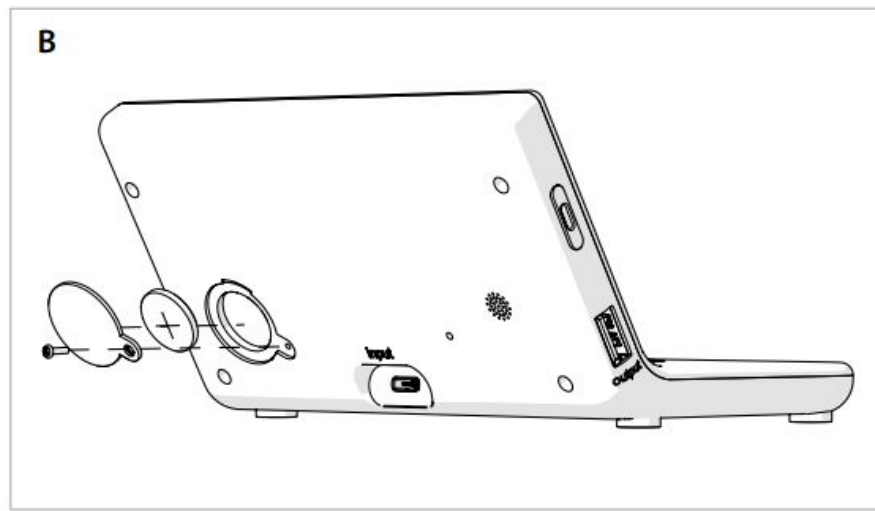
### WARNING

- Ensure you have fully read and understood the instructions in this document before you install or use the product. Keep the packaging and this document for future reference.
- Only use the product as described in this document.
- Do not use the product if a part is damaged or defective. Replace a damaged or defective product immediately.
- Do not drop the product and avoid bumping.
- This product may only be serviced by a qualified technician for maintenance to reduce the risk of electric shock.
- Do not dismantle, open, or shred cells or batteries.
- Do not expose cells or batteries to heat or fire. Avoid storage in direct sunlight.
- Do not short-circuit a cell or a battery.
- Do not store cells or batteries haphazardly in a box or drawer where they may short-circuit each other or be short-circuited by other metal objects.
- Do not subject cells or batteries to mechanical shock.
- In the event of a battery leaking, do not allow the liquid to come in contact with the skin or eyes. If contact has been made, wash the affected area with copious amounts of water and seek medical advice.
- Only use the battery type(s) recommended in this document.
- Keep cells and batteries clean and dry.
- Retain the original product literature for future reference.
- Do not remove a cell or battery from the original packaging until required for use.
- Do not use any cell or battery that is not designed for use with the product.
- Use only the cell or battery in the application for which it was intended.
- Wipe the cell or battery terminals with a clean, dry cloth if they become dirty.
- Battery usage by children should be supervised.
- Observe the plus (+) and minus (–) marks on the cell or battery and product, and ensure correct use.
- Properly dispose of empty cells or batteries.

- Seek medical advice immediately if a cell or a battery has been swallowed.
- Always keep button cell batteries, both full and empty, out of reach of children to avoid the chance of swallowing. Dispose of used batteries immediately and safely. Button cell batteries can cause serious internal chemical burns in as little as two hours when swallowed. Keep in mind that the first symptoms may look like child diseases, like coughing or drooling. Seek immediate medical attention when you suspect that batteries have been swallowed.
- Do not expose the product to water, rain, moisture, or high humidity. Short circuits might occur.
- Do not expose the product to fire. Short circuits might occur.
- Do not use the wireless charger in environments that exceed the ranges stated in the technical specifications. The circuits of the product and the charged product can be damaged.
- Some wireless products may interfere with implantable medical devices and other medical equipment, such as pacemakers, cochlear implants, and hearing aids. Consult the manufacturer of your medical equipment for more information.
- Do not let children play with the wireless charger as a toy to avoid accidents.
- Only use the provided USB cable.
- Disconnect the product from the power source and other equipment if problems occur.
- Do not place foreign materials, such as metal objects, magnets, and magnetic stripe cards, such as debit or credit cards, between your device and the wireless charger. The device may not charge properly or may be damaged due to overheating.
- Do not place cards with magnetic strips and magnetic chips close to the wireless charger to avoid magnetic card failure.

## **Replacing the battery**

- The battery is only used for memorising the time, date, and alarm settings during a sudden loss of power. Keep the power supply connected to use the product.
- Make sure that the battery polarity (+/-) matches the polarity markings inside the battery compartment.



## Connecting to a power supply

Only use the provided USB charging cable.

1. Insert the USB-C-USB cable A7 into the USB-C input A6.
2. Insert the other end of the cable into a USB adapter (not included).
3. Connect the USB adapter to a power outlet.

The product is ready for use when all indicator lights are on.

## Setting Up

### Setting the calendar

1. Press and hold the snooze button A1 to edit the date.
2. Press the – button A15 and the + button A14 to set the year.
3. Press the snooze button A1 to confirm the year.
4. Press the – button A15 and the + button A14 to set the month.
5. Press the snooze button A1 to confirm the month.
6. Press the – button A15 and the + button A14 to set the day.
7. Press the snooze button A1 to save the date.

Press the snooze button A1 to check the calendar while the product is in the standby mode.

### Setting the temperature unit

Double-press the snooze button A1 to change the temperature unit between Celsius and Fahrenheit.

## **Setting the time**

1. Press the time button A13 to edit the time.
2. Press the – button A15 and the + button A14 to set the hours.
3. Press the time button A13 to confirm the hours.
4. Press the – button A15 and the + button A14 to set the minutes.
5. Press A13 to save time.

## **Setting display brightness**

Press A14 or A15 to change the display brightness.

## **Setting the alarm**

1. Press and hold A14 for 3 seconds to activate or deactivate alarm 1.
2. Press and hold A15 for 3 seconds to activate or deactivate alarm 2.  
The alarm indicators A8, A9 indicate the active alarm(s).
3. Press and hold the time button A13 to set alarm 1.
4. Press the – button 15 and the + button A14 to set the hours.
5. Press the time button A13 to confirm the hours.
6. Press the – button A15 and the + button A14 to set the minutes.
7. Press and hold the time button A13 to set alarm 2.
8. Press the – button A15 and the + button A14 to set the hours.
9. Press the time button A13 to confirm the hours.
10. Press the – button A15 and the + button A14 to set the minutes.
11. Press A13 to save the alarm.

## **Snoozing and switching off the alarm**

The alarm sounds for 3 minminutester which it switches off automatically.

- Press the snooze button A1 to snooze the alarm for 5 minutes.  
A8 or A9 blinks to indicate that the alarm is in snooze mode.
- Press the + button A14 to switch off alarm 1 for the day.
- Press the – button A15 to switch off alarm 2 for the day.

## **Wireless charging**



Place your Qi-compatible device on the wireless charging area A3.

- A4 switches on.
- A4 switches off when the battery is fully charged.
- Do not place foreign materials, such as metal objects, magnets, and magnetic stripe cards, such as debit or credit cards, between your device and the wireless charger. The device may not charge properly or may be damaged due to overheating.
- If a foreign object is detected, A4 will blink continuously, and wireless charging is disabled.

## Declaration of Conformity

- We, Nedis B.V., declare as manufacturer that the product WCACQ20BK / WCACQ20WT from our brand Nedis®, produced in China, has been tested according to all relevant CE standards and regulations and that all tests have been passed successfully. This includes, but is not limited to, the RED 2014/53/EU regulation.
- The complete Declaration of Conformity (and the safety datasheet if applicable) can be found and downloaded via:
  - [nedis.com/WCACQ20BK#support](https://nedis.com/WCACQ20BK#support)
  - [nedis.com/WCACQ20WT#support](https://nedis.com/WCACQ20WT#support)

## Specifications

- **Product Alarm Clock**
- **Article number** WCACQ20BK / WCACQ20WT
- **Dimensions (l × w × h)** 140 × 125 × 75 mm
- **Weight** 185 g
- **Input power**
  - 5 VDC; 2 A
  - 9 VDC ; 2.5 A
  - 12 VDC ; 2 A
- **Wired charging output power** 5 VDC; 1 A
- **Wireless charging output power**
  - 5 W
  - 7.5 W

- 10 W
- 15 W
- **Wireless charging distance** Up to 8 mm
- **Wireless charging efficiency** 73 %
- **Frequency range** 110.6 – 136.2 KHz
- **Maximum transmission power** -9.64 dBuA/m @ 10 m
- **Advised power adapter** QC 2.0 / QC 3.0 (not included)
- **Battery type** CR2032
- **Operating temperature** 0 °C – 45 °C
- **Operating humidity** 20 – 85 % (40 °C)

## FAQ (Frequently Asked Questions)

- **How long does the alarm sound before switching off?**

The alarm sounds for 3 minutes before switching off automatically.


- **Can I use any USB adapter for connecting to a power outlet?**

It is recommended to use the provided USB adapter for safe power supply connections.

- **How do I know if the wireless charging is working?**

The A4 indicator will switch on when wireless charging is active and off when the device is fully charged.

## Documents / Resources

	<p><a href="#">Nedis WCACQ20BK-WCACQ20WT Alarm Clock [pdf]</a> User Guide</p> <p>WCACQ20BK, WCACQ20WT, WCACQ20BK-WCACQ20WT Alarm Clock, WCACQ20BK-WCACQ20WT, Alarm Clock</p>
---	--

## References

- [User Manual](#)

■ nedis

🔍 Alarm Clock, nedis, WCACQ20BK, WCACQ20BK-WCACQ20WT, WCACQ20BK-WCACQ20WT Alarm Clock, WCACQ20WT

# Leave a comment

Your email address will not be published. Required fields are marked \*

Comment \*

Name

Email

Website

☐ Save my name, email, and website in this browser for the next time I comment.

**Post Comment**

**Search:**

e.g. whirlpool wrf535swhz

**Search**

[Manuals+](#) | [Upload](#) | [Deep Search](#) | [Privacy Policy](#) | [@manuals.plus](#) | [YouTube](#)

This website is an independent publication and is neither affiliated with nor endorsed by any of the trademark owners. The "Bluetooth®" word mark and logos are registered trademarks owned by Bluetooth SIG, Inc. The "Wi-Fi®" word mark and logos are registered trademarks owned by the Wi-Fi Alliance. Any use of these marks on this website does not imply any affiliation with or endorsement.