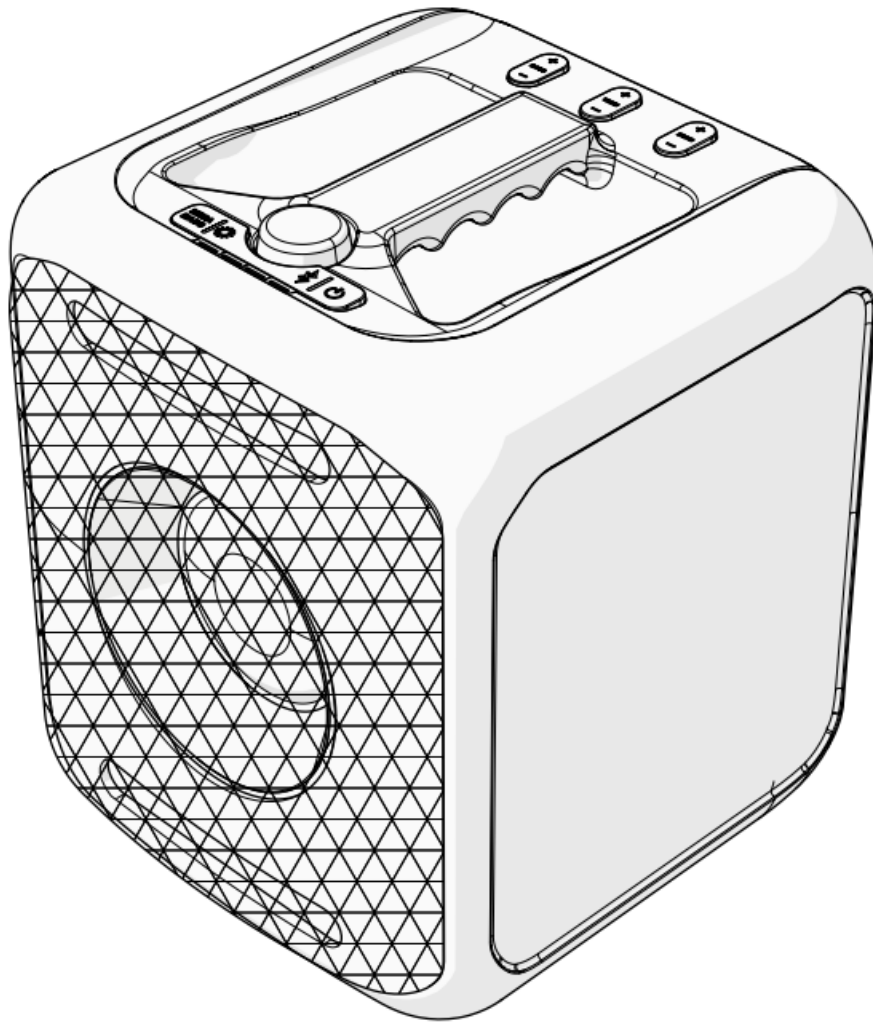




nedis SPPT2450BK Bluetooth Cube Party Speaker User Guide

[Home](#) » [nedis](#) » nedis SPPT2450BK Bluetooth Cube Party Speaker User Guide 

nedis SPPT2450BK Bluetooth Cube Party Speaker



Contents

- [1 Specifications](#)
- [2 Bluetooth® Cube Party Speaker](#)
- [3 Intended use](#)
- [4 Main parts \(image A\)](#)
- [5 Safety instructions](#)
- [6 Resetting the product](#)
- [7 Disposal](#)
- [8 Declaration of Conformity](#)
- [9 Customer Support](#)
- [10 Documents / Resources](#)
 - [10.1 References](#)
- [11 Related Posts](#)

Specifications

Product	Bluetooth® Cube Party Speaker
Article number	SPPT2450BK
Max. play time (at 50 % volume)	5 hours
Charging time	2.5 hours
Bluetooth® version	5.0
Bluetooth® frequency range	2402 – 2480 MHz
Max. transmit power	6.14 dBm
Speaker peak power	150 W
Speaker RMS power	50 W
Driver diameter	5.25" subwoofer
	2 × 2" tweeter
Impedance	40 Ohm
RGB LED lights	Yes
Connections	USB-A
	AUX
	Bluetooth®
Battery capacity	2000 mAh
Input power	100 – 240 VAC ~ 50 / 60 Hz
	0.8 A

Bluetooth® Cube Party Speaker



For more information see the extended manual online: ned.is/sppt2450bk

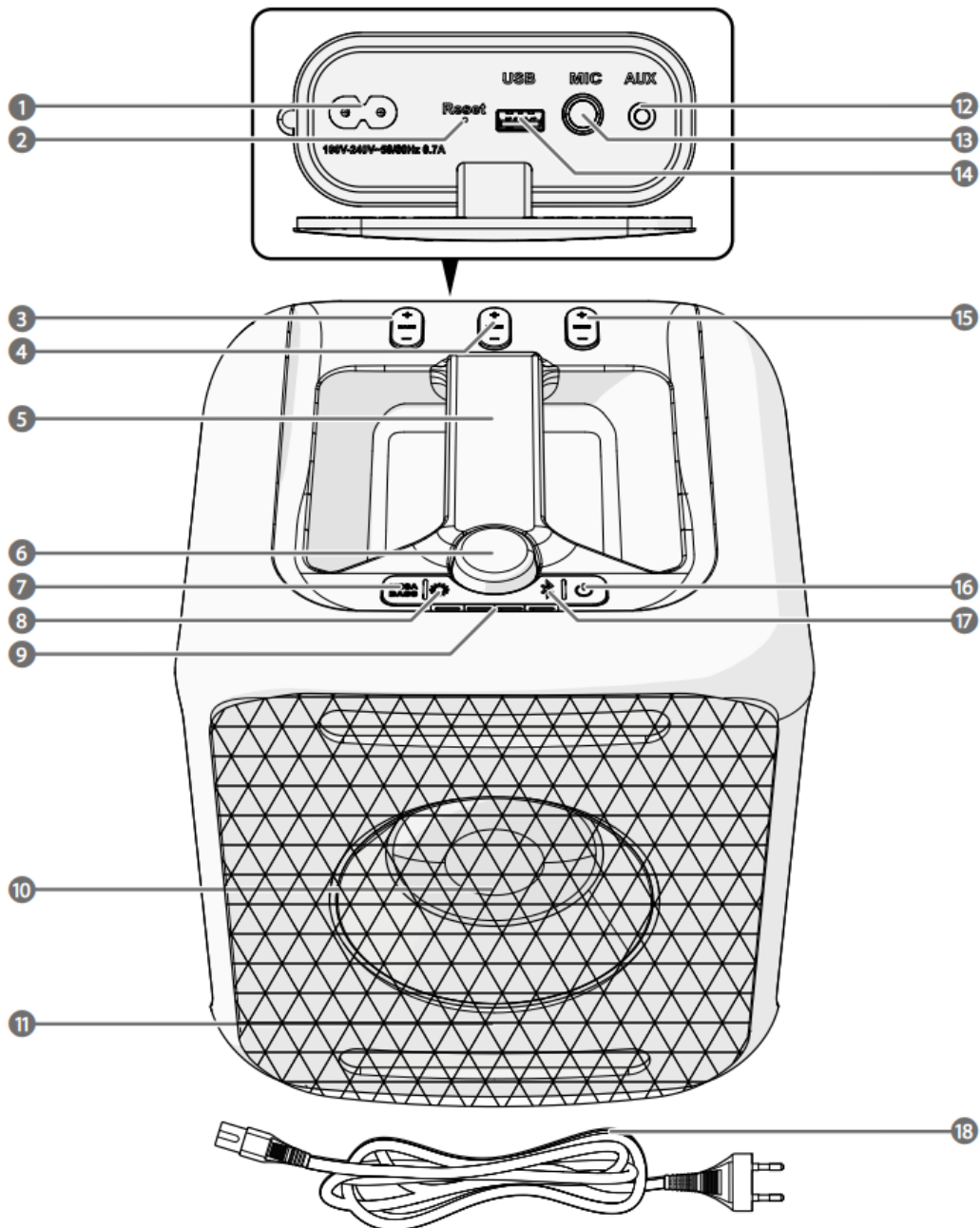
Intended use

- This product is intended to stream audio from your media device via
- Bluetooth®, audio cable or from a USB flash drive.
- This product is intended for indoor use only.
- Any modification of the product may have consequences for safety, warranty and proper functioning.
- This product is intended to be used in household and similar applications such as kitchen areas.
- The product is not intended for professional use.

Main parts (image A)

1. Power supply port
2. Reset button
3. Bass adjustment button
4. Treble adjustment button
5. Handle
6. Play/pause button / volume dial
7. MEGA BASS button
8. LED / previous button
9. Battery indicator LEDs
10. Speaker
11. Party lights
12. AUX port
13. Microphone port
14. USB port
15. Echo adjustment button
16. Power button
17. Bluetooth / next button
18. Power cable

A



Safety instructions

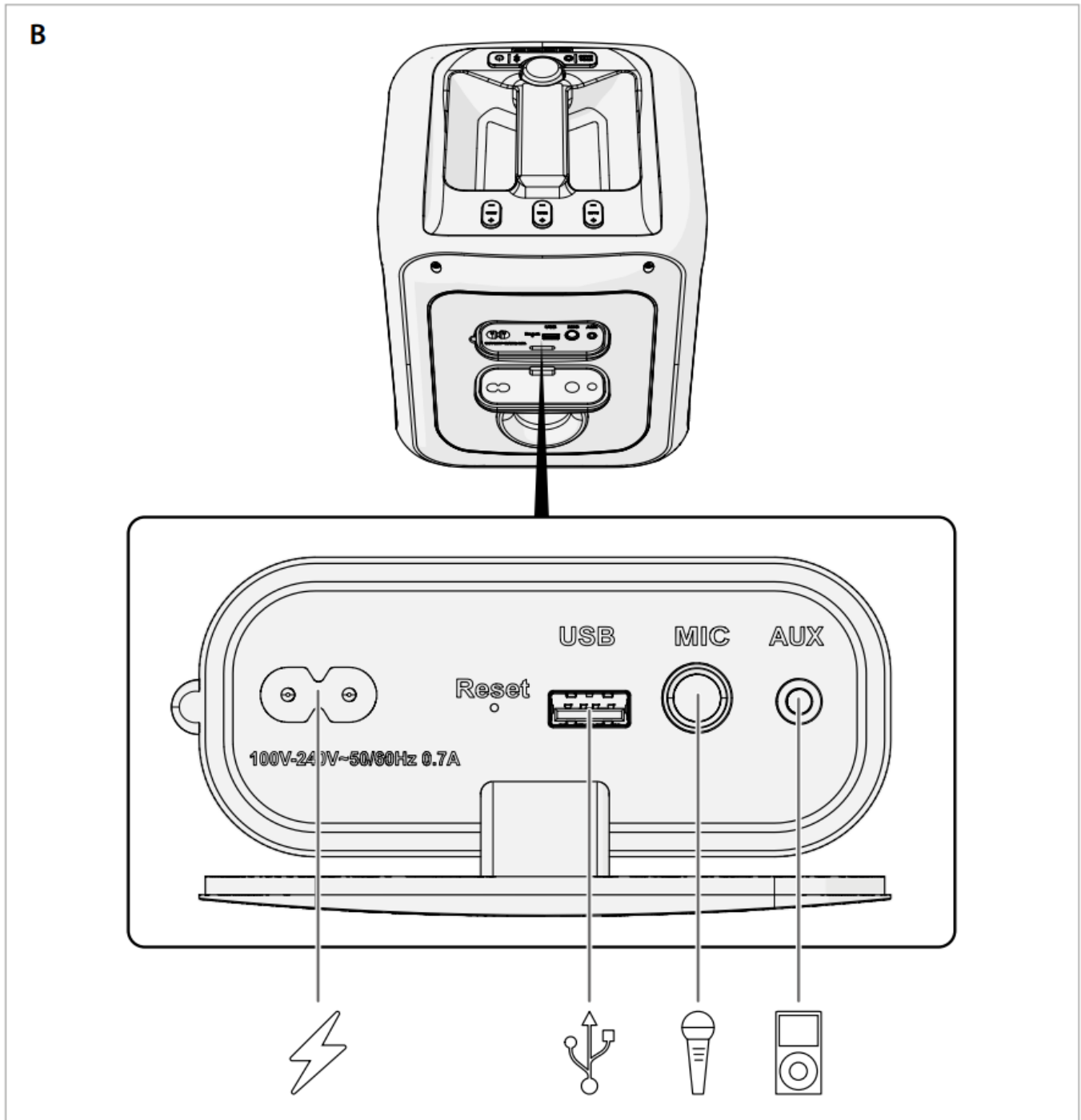


WARNING

- Ensure you have fully read and understood the instructions in this document before you install or use the product. Keep the packaging and this document for future reference.
- Only use the product as described in this document.
- Do not let children play with the packaging material. Always keep the packaging material out of the reach of children.
- The handle is exclusively intended to carry the weight of the product.
- Do not drop the product and avoid bumping.
- Do not expose the product to water, rain, moisture, or high humidity.
- Only use the provided power cable.

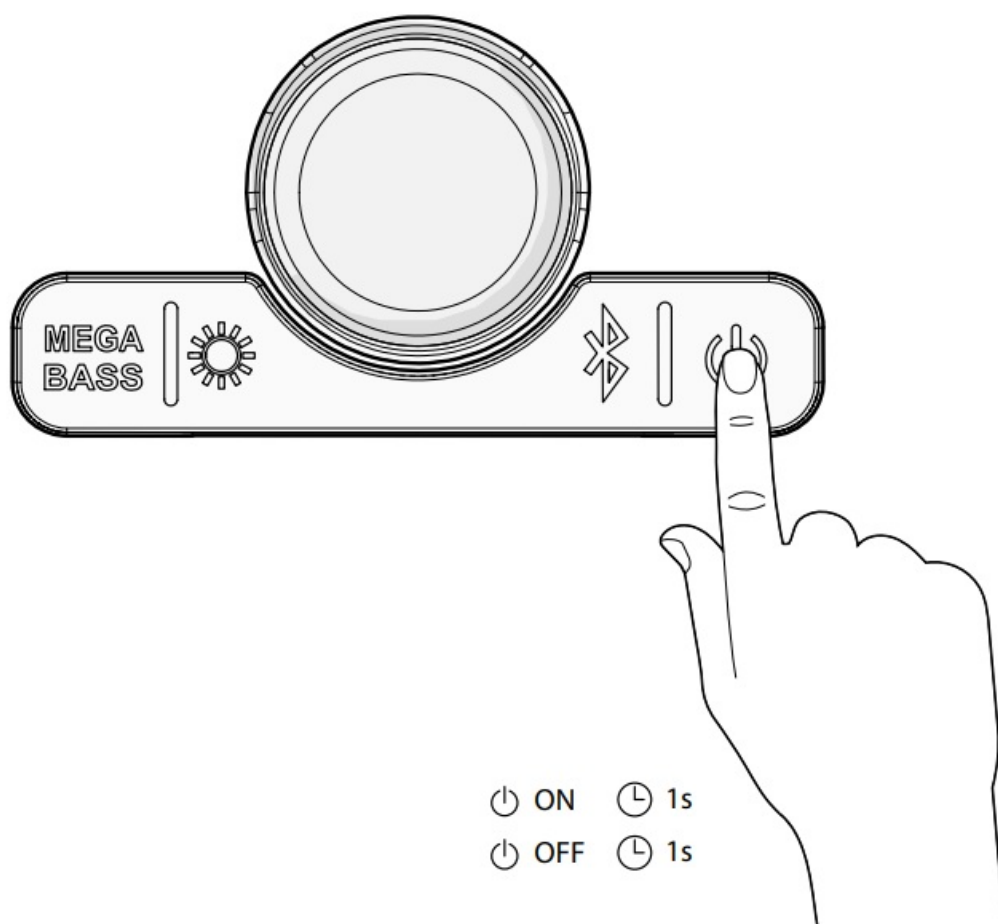
- Always keep the power cable and the product away from usual walkways.
- Do not use the product if a part is damaged or defective. Replace a damaged or defective product immediately.
- Extended exposure to high volumes can cause hearing loss.
- Do not open the product, there are no user serviceable parts inside.
- Do not immerse the product in water or other liquids.
- Disconnect the product from the power source before cleaning.
- Do not use aggressive chemical cleaning agents when cleaning the product.

Connecting the product (image B)



Switching on the product (image C)

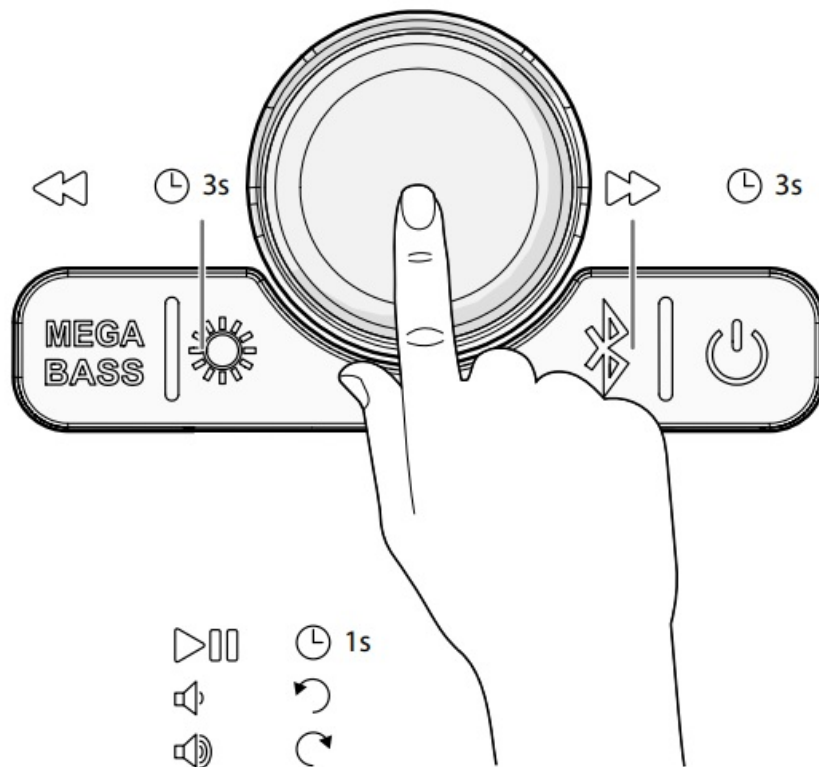
C



Controlling the music (image D)

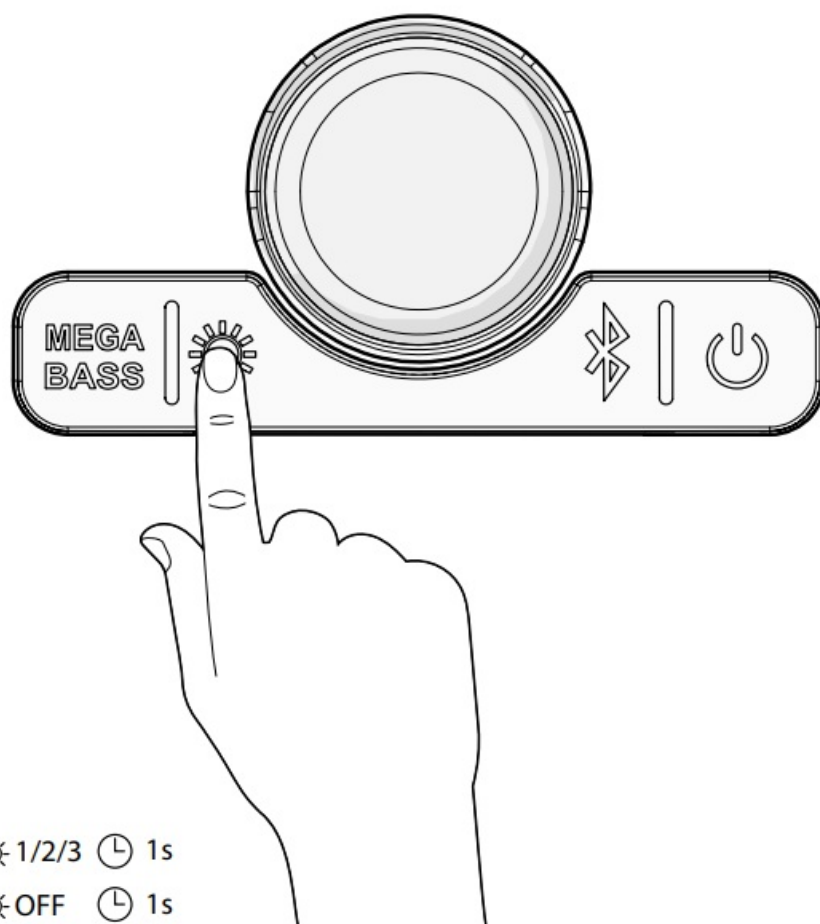
1. Press the MEGA BASS button **A7** to switch the mega bass function on or off.
2. Press the bass adjustment button **A3** to adjust the bass level.
3. Press the treble adjustment button **A4** to adjust the treble level.
4. Press the echo adjustment button **A15** to adjust the echo level.

D



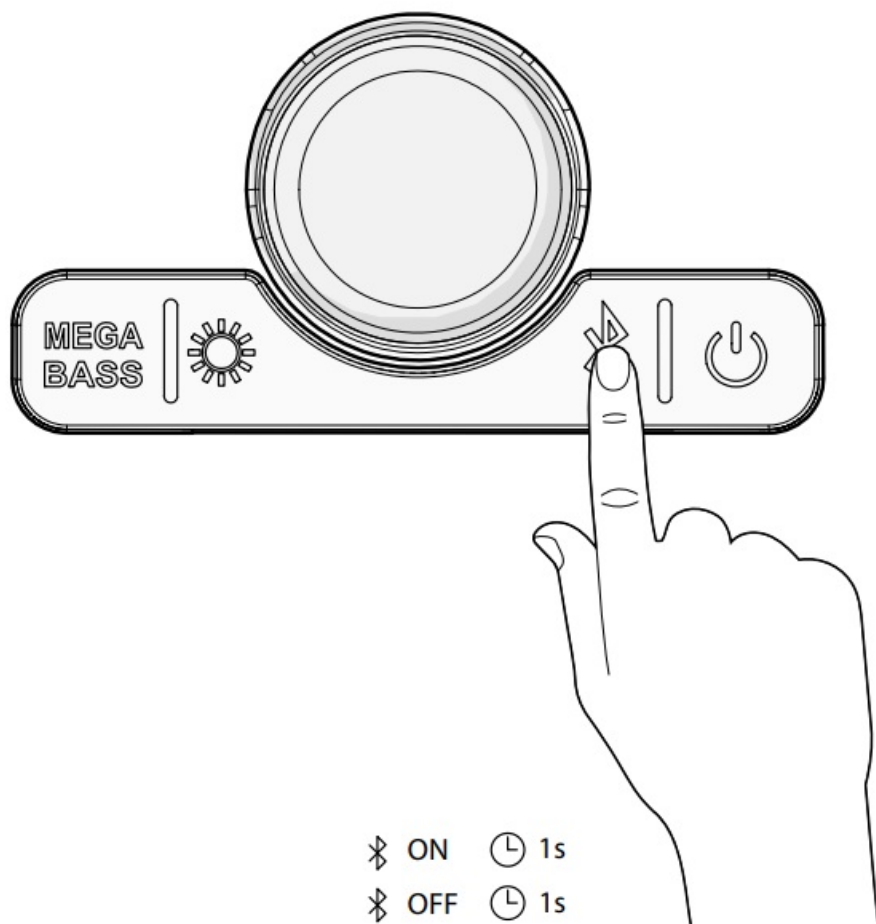
Controlling the LED lights (image E)

E

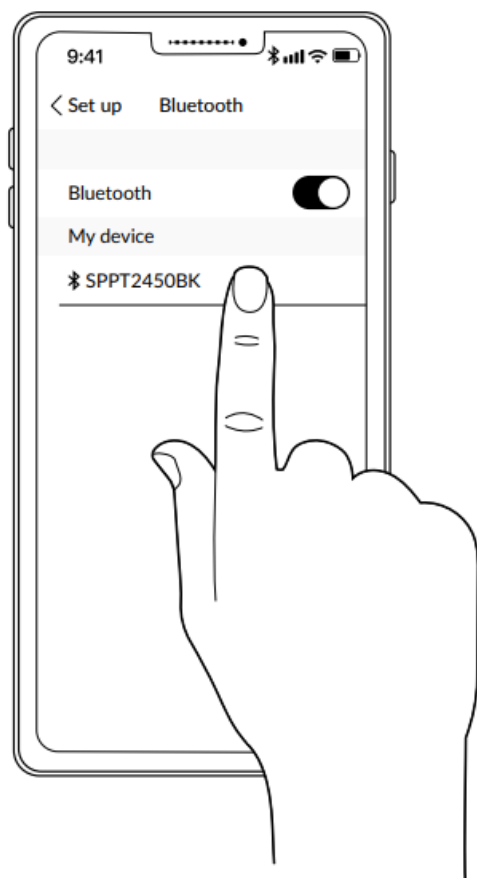


Playing music from a Bluetooth® audio source (image F – G)

F



G



Connecting to another speaker

1. Enable Bluetooth on both speakers.
2. Press and hold the play/pause button / volume dial **A6** on one of the speakers.

The speakers are now connected and can be controlled via one speaker.

Resetting the product

Press and hold the reset button **A2** with a pin for 5 seconds to reset the product.

Disposal



■ The product is designated for separate collection at an appropriate collection point. Do not dispose of the product with household waste. For more information, contact the retailer or the local authority responsible for the waste management.

Declaration of Conformity

We, Nedis B.V. declare as manufacturer that the product SPPT2450BK from our brand Nedis®, produced in China, has been tested according to all relevant CE standards and regulations and that all tests have been passed successfully. This includes, but is not limited to the RED 2014/53/EU regulation.

The complete Declaration of Conformity (and the safety data sheet if applicable) can be found and downloaded via: nedis.com/SPPT2450BK#support

Customer Support

Nedis BV

De Tweeling 28, 5215 MC 's-Hertogenbosch The Netherlands

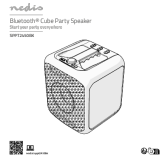


ned.is/sppt2450bk





Documents / Resources

	<p>nedis SPPT2450BK Bluetooth Cube Party Speaker [pdf] User Guide SPPT2450BK Bluetooth Cube Party Speaker, SPPT2450BK, Bluetooth Cube Party Speaker, Cube Party Speaker, Party Speaker, Speaker</p>
---	---

References

- [Bluetooth® Party Speaker | Maximum battery play time: 5 hrs | 150 W | Carrying handle | Party lights | Linkable | Equalizer | Black / Orange](#)
- [Bluetooth® Party Speaker | Maximum battery play time: 5 hrs | 150 W | Carrying handle | Party lights | Linkable | Equalizer | Black / Orange](#)
- [Reproduktor Bluetooth® Party | Maximální doba přehrávání na baterie: 5 hod | 150 W | Držadlo | Párty osvětlení | Propojitelný | Ekvalizér | Černá / Oranžová](#)
- [Bluetooth®-Party-Lautsprecher | max. Batteriespielzeit: 5 Std | 150 W | Tragegriff | Partylicht | Verknüpfbar | Equalizer | Orange / Schwarz](#)
- [Bluetooth® Party Speaker | Maksimal batteritid: 5 timer | 150 W | Bærehåndtag | Fest lys | Kan parres | Equalizer | Orange / Sort](#)
- [Altavoz de fiesta Bluetooth® | Máximo tiempo de batería: 5 horas | 150 W | Asa de transporte | Luces de fiesta | Enlazable | Ecualizador | Naranja / Negro](#)
- [Haut-parleur BlueTooth® Party | Durée de lecture maximale de batterie: 5 heures | 150 W | Poignée de transport | Lumières de fête | Liable | Égaliseur | Noir / Orange](#)
- [Altoparlante del partito Bluetooth® | Tempo massimo di riproduzione della batteria: 5 ore | 150 W | Con impugnatura | Luci da festa | collegabile | Equalizzatore | Arancia / Nero](#)
- [Bluetooth® Party Speaker | Maksimal batteritid: 5 timer | 150 W | Bære håndtak | Party lys | Linkable | Equalizer | Oransje / Sort](#)
- [Bluetooth® Party Speaker | Maximum battery play time: 5 hrs | 150 W | Carrying handle | Party lights | Linkable | Equalizer | Black / Orange](#)
- [Bluetooth® Party Speaker | Maximal batteritid: 5 timmar | 150 W | Bärhandtag | Festljus | Synkroniseringsbar | Equalizer | Orange / Svart](#)
- [Bluetooth® Party Speaker | Maximum battery play time: 5 hrs | 150 W | Carrying handle | Party lights | Linkable | Equalizer | Black / Orange](#)

- [User Manual](#)

[Manuals+](#), [Privacy Policy](#)

This website is an independent publication and is neither affiliated with nor endorsed by any of the trademark owners. The "Bluetooth®" word mark and logos are registered trademarks owned by Bluetooth SIG, Inc. The "Wi-Fi®" word mark and logos are registered trademarks owned by the Wi-Fi Alliance. Any use of these marks on this website does not imply any affiliation with or endorsement.