

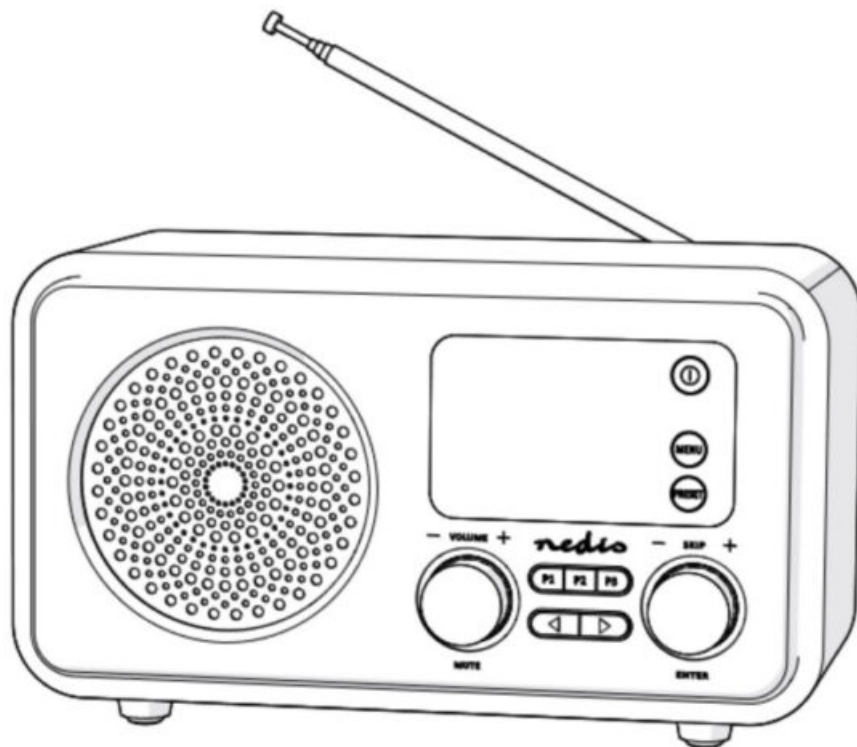


nedis RDIN2000WT Internet Radio User Guide

[Home](#) » [nedis](#) » nedis RDIN2000WT Internet Radio User Guide 

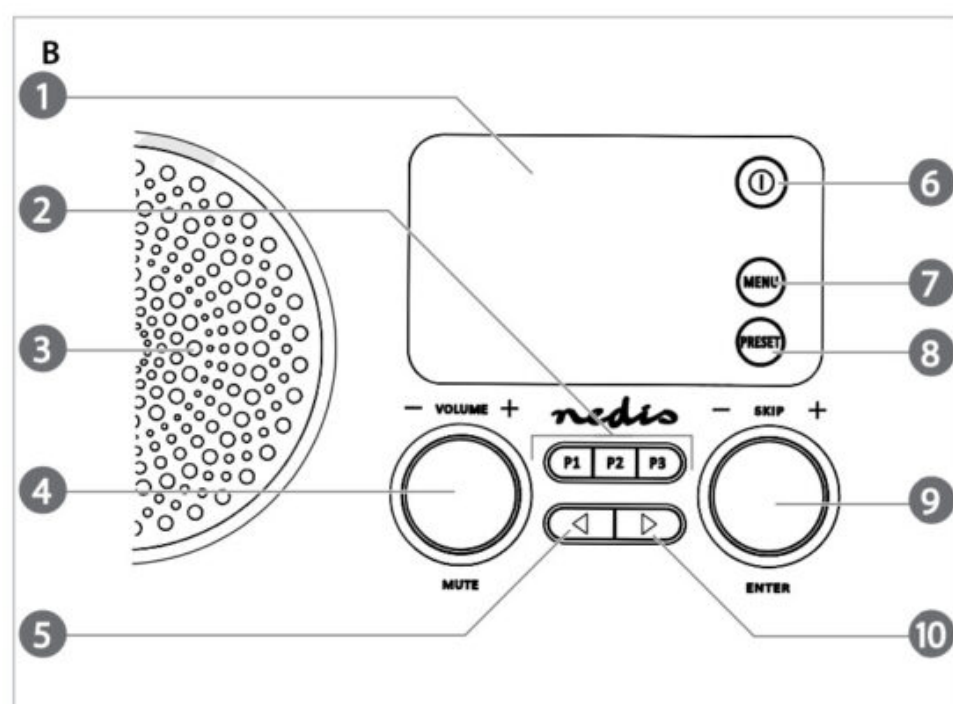
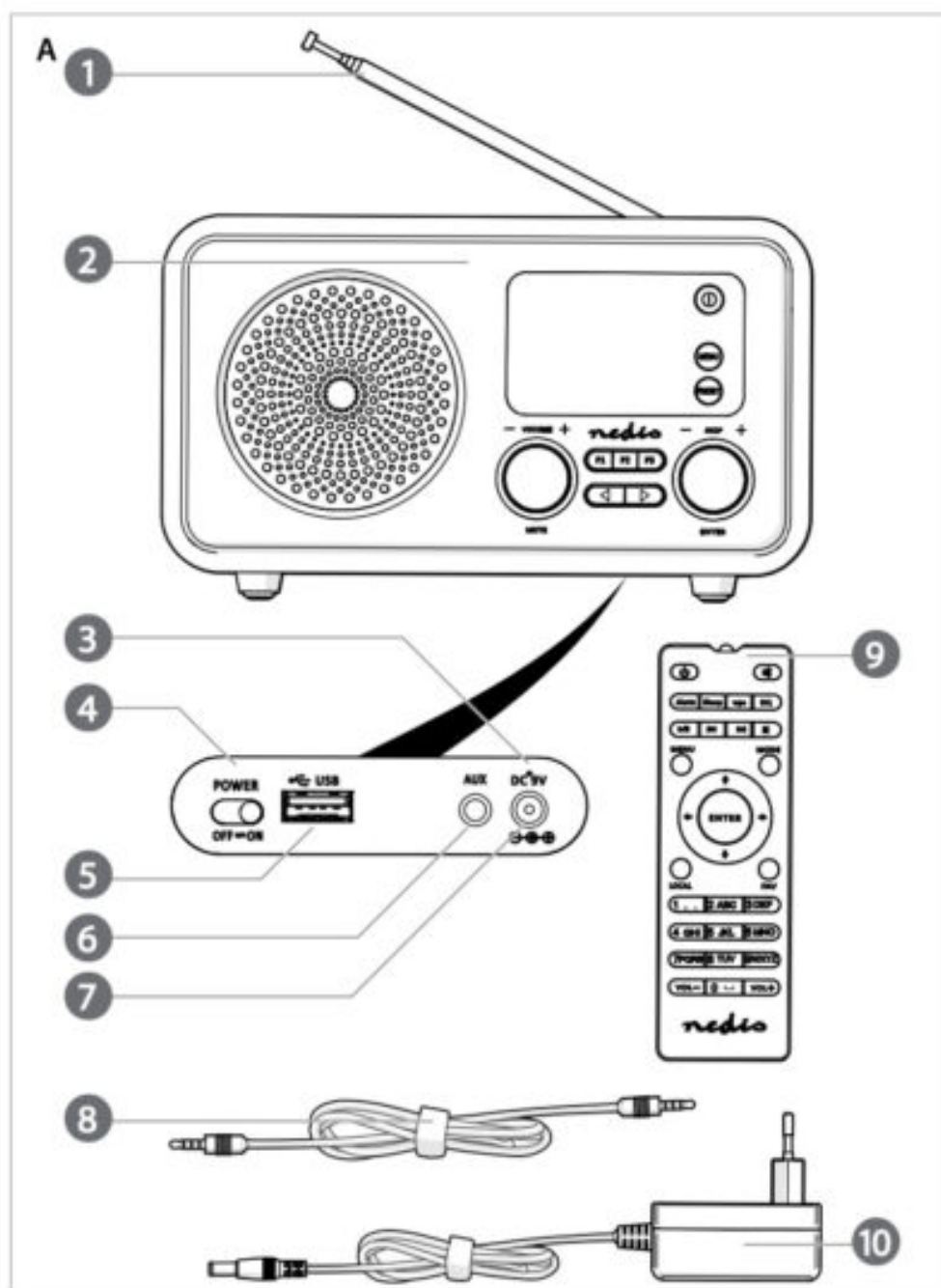
nedis

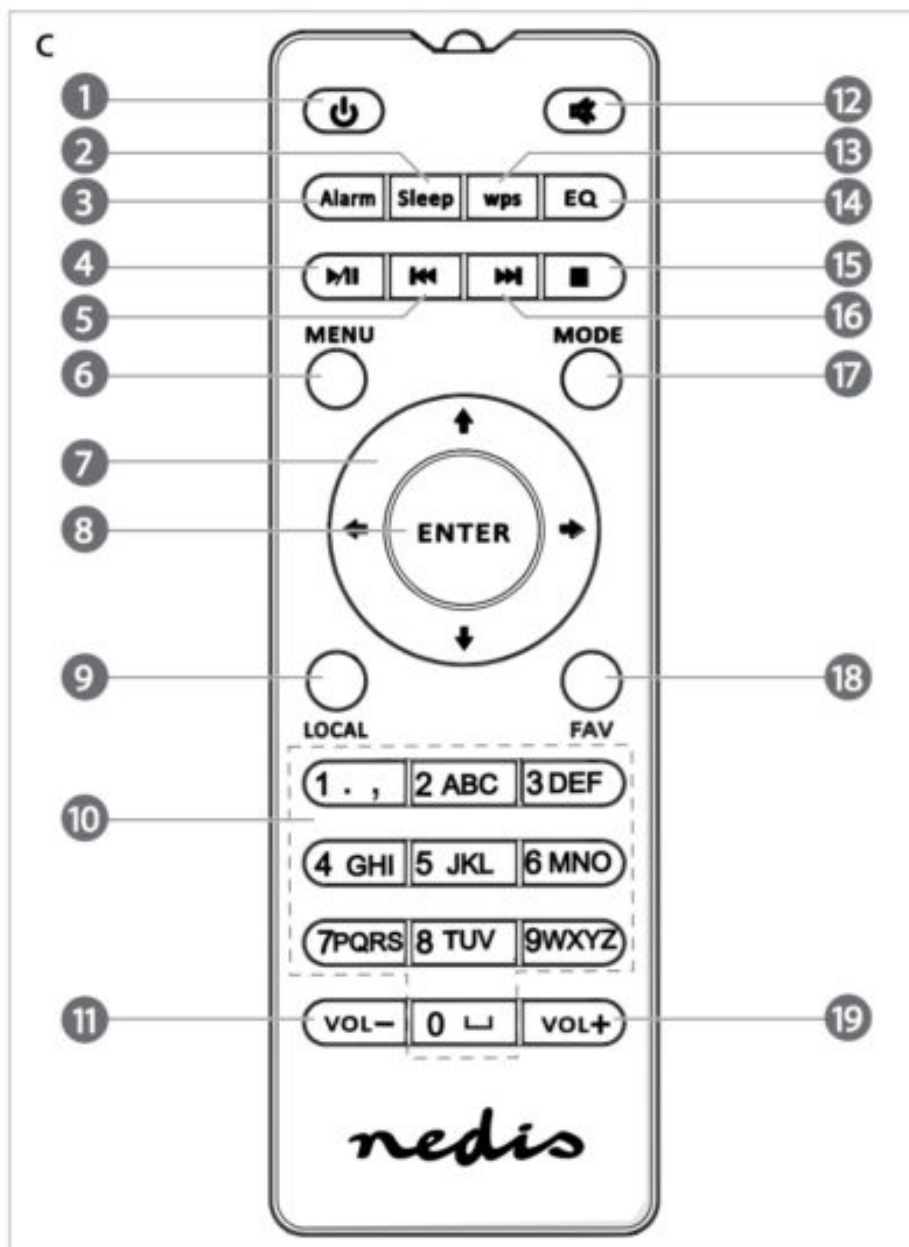
RDIN2000WT Internet Radio
User Guide



ned.is/rdin2000wt

<http://ned.is/RDIN2000WT>





Contents

- 1 Internet Radio RDIN2000WT
- 2 Intended use
- 3 Specifications
- 4 Safety instructions
- 5 Place the battery
- 6 Connecting the product
- 7 Declaration of Conformity
- 8 Documents / Resources
- 9 Related Posts

Internet Radio RDIN2000WT



For more information see the extended manual online:

ned.is/rdin2000wt

Intended use

The Nedis RDIN2000WT is multifunctional internet radio.

The product is intended for indoor use only.

The product is not intended for professional use.

This product can be used by children aged 8 years and above and persons with reduced physical, sensory or mental capabilities or lack of experience and knowledge if they have been given supervision or instruction concerning the use of the product in a safe way and understand the hazards involved. Children shall not play with the product. Cleaning and user maintenance shall not be done by children without supervision.

The product is intended for use in household environments for typical housekeeping functions that may also be used by non-expert users for typical housekeeping functions, such as: shops, offices other similar working environments, farmhouses, by clients in hotels, motels, and other residential type environments and/or in bed and breakfast type environments.

Any modification of the product may have consequences for safety, warranty, and proper functioning.

Specifications

Product	Internet Radio
Article number	RDIN2000WT
Wireless connections	Wi-Fi: 802.11 b/g/n Bluetooth® 5.0
Wi-Fi frequency range	2412 – 2483.5 MHz
Wi-Fi radio transmits power	18.0 dBm
Wi-Fi antenna gain	2 dBi
Bluetooth frequency range	2402 – 2480 MHz
Bluetooth® radio transmit power	4 dBm
Bluetooth® antenna gain	0 dB
Supported Bluetooth® profiles	A2DP, AVRCP, SPP
Radio bands	FM / DAB & DAB+

FM frequency range	875 -108 MHz
DAB+ frequency range	174- 240 MHz
Speaker (RMS)	5 W
Speaker peak power	7W
Driver size	3.
Display	TFT 2.4"
Supported media playback	MP3, WAV, FLAC, AAC, AAC+
Streaming protocols	UPnP, DLNA
Saving radio presets	Internet radio 250 stations; DAB 99 stations; FM 99 stations
Connection Input	AUX
Power input	9.0VDC;1.3 A
Power consumption in use	5.0W
Power consumption standby	2.0W
Dimensions (w x h x d)	220 x 120 x 95 mm
Weight	800 g

Main parts (image A)

1. Antenna	6. AUX input
2. Raio	7. Power input
3. Power indicator LED	8. Aux cable
4. Power switch	9. Remote control
5. us8input	10. Power adapter

Safety instructions



WARNING




To prevent possible hearing damage, do not listen at high volume levels for long periods.

- Ensure you have fully read and understood the instructions in this document before you install or use the product. Keep this document for future reference.
- Only use the product as described in this document.
- Do not use the product if a part is damaged or defective. Replace a damaged or defective product immediately.
- Do not drop the product and avoid bumping.
- This product may only be serviced by a qualified technician for maintenance to reduce the risk of electric shock.
- Unplug the product from the power source and other equipment if problems occur.
- Only use the provided power cable.
- Do not expose the product to water or moisture.
- Do not use the product where splashing of water might occur, e.g. bathroom, swimming pool or close to a washbowl.
- Do not use this product in a bathtub, shower, or water-filled reservoir.
- Observe the plus(+) and minus(-) marks on the cell, battery and equipment and ensure correct use.
- Do not use any cell or battery that is not designed for use with the product.
- Seek medical advice immediately if a cell or a battery has been swallowed.
- Use only the cell or battery in the application for which it was intended.
- Battery usage by children should be supervised.
- Do not mix cells of different manufacture, capacity, size or type within a product.
- Properly dispose of the empty battery.
- When possible, remove the battery from the product when not in use.
- Protect the eyes against exposure to visible and/ or infrared radiation. Take adequate precautions when exposed.
- The product might cause interference with nearby devices.
- Do not use the product at locations where the use of wireless devices is prohibited due to potential interference with other electronic devices, which may cause safety hazards.
- Place the product on a stable and flat surface.

- Do not open the product.
- Do not use an extension cable.
- Do not leave the product unattended when switched on.
- Keep the product out of reach from children.
- Listening at a high volume for a long time will damage your hearing.


Place the battery


- Place 2 size AM batteries (not included) into **A9**.

 Make sure to match the(+) and(-) polarity markings.

Connecting the product

1. Plug the power adapter A(10) into the power input A(7).
2. Plug the other end of A(10) into a power outlet.

 Only use the provided power cable.

 If you use the product for the first time, the system will ask you to set the language and network configurations.

Controls on the radio (image B)

1	Display	Shows information and settings.
2	P1,P2,P3	Press to select a preset station. Press and hold to store a current station as a preset station.
3	Speaker	
4	Volume control dial	Turn the dial to increase or decrease the volume. Press to switch the music on or off.
5	Previous button	Press to move left/upwards on the display or return.
6	On/ standby button	Press to enter or exit standby mode. Press to switch off the alarm.
7	Menu button	Press to enter: AUX / Bluetooth° / Configuration / Local Radio/ Internet Radio/ Media Centrum / FM /DAB+.
8	Preset button	Press to enter the interface of the current station. Press and hold to enter the interface of the pre-stored station.
9	Navigation dial	Rotate to cycle through the items on the display. Press to confirm.
10	Next button	Press to move right/down or return on the display or go forward.

Using the remote (image C)

1	Power button	
2	Sleep button	Press to set sleep time.
3	Alarm button	Press to enter alarm settings.
4	Play/pause button	
5	Previous button	
6	Menu button	
7	Arrow buttons	Navigation.
8	Enter button	Confirm.
9	Local button	Press to select local radio mode.
10	Digit buttons	Press to enter a numerical value.
11	Volume down button	
12	Mute button	
13	WPS button	Press to enter network settings.
14	Equalizer button	Select the sound scenario.
15	Stop button	
16	Next button	
17	Mode button	Press to switch between: Internet Radio/ DAB+/FM / AUX/Bluetooth™ /UPnP /USB.
18	FAVbutton	Press to show your presets. Press and hold to add the current channel to your presets.
19	Volume up button	

Declaration of Conformity

We, Nedis B.V. declare as a manufacturer that the product RDIN2000WT from our brand Nedis', produced in China, has been tested according to all relevant CE standards and regulations and that all tests have been passed successfully. This includes, but is not limited to the RED 2014/53/EU regulation.

The complete Declaration of Conformity (and the safety datasheet if applicable) can be found and downloaded via: nedis.com/rdin2000wt#support

For additional information regarding the compliance, contact the customer service:

Web: www.nedis.com

E-mail: service@nedis.com


Nedis B.V., de Tweeling 28

5215 MC 's-Hertogenbosch, the Netherlands

NedisBV

De Tweeling 28, 5215 MC 's-Hertogenbosch
The Netherlands

Documents / Resources

 <p>The image shows a small, rectangular internet radio with a silver and black finish. It has a telescopic antenna on the left side and a circular speaker grille. The Nedis logo is visible in the top left corner of the image.</p>	<p>nedis RDIN2000WT Internet Radio [pdf] User Guide RDIN2000WT, Internet Radio, RDIN2000WT Internet Radio</p>
---	---

Manuals+