



# nedis IR Remote Control Extender User Guide

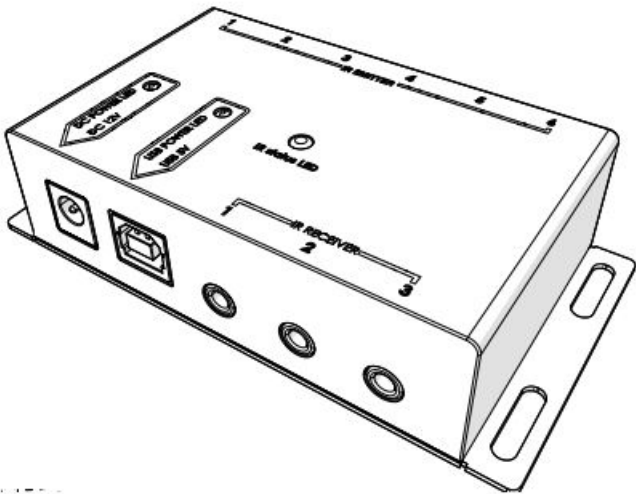
[Home](#) » [nedis](#) » nedis IR Remote Control Extender User Guide 

nedis IR Remote Control Extender

nedis

IR Remote Control Extender  
to operate equipment which is out of sight

IREX150AT

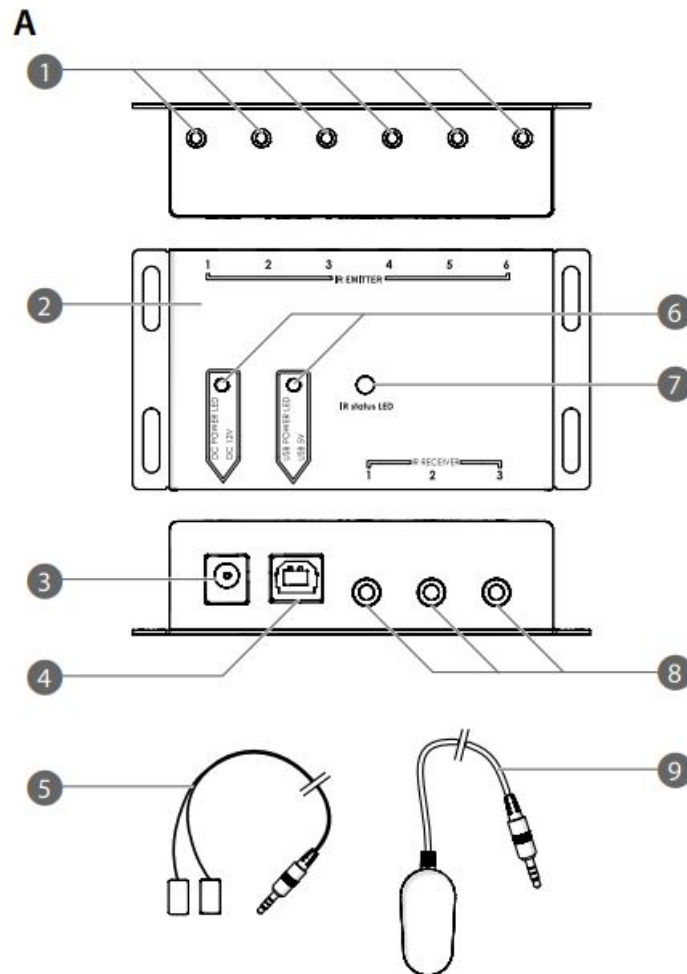




<http://ned.is/IREX150AT>



[ned.is/irex150at](http://ned.is/irex150at)



## IR Remote Control Extender IREX150AT



For more information see the extended manual online: [ned.is/irex150at](http://ned.is/irex150at)

### Intended use

This product amplifies and extends the infrared signal from a remote control to a device connected with this product, even when your devices are concealed. The product is intended for indoor use only. The product is not intended for professional use. Any modification of the product may have consequences for safety, warranty and proper functioning.

## Contents

### 1 Specifications

### 2 Documents / Resources

#### 2.1 References

### 3 Related Posts

## Specifications

**Product** IR Remote Control Extender

**Article number** IREX150AT

**Dimensions (l x w x h)** 88 x 55 x 26 mm

**Power supply** 12 VDC; 1 A

**USB power supply** 5 VDC

### Main parts (image A)




- (1) IR emitter ports (6x)
- (2) IR transmitter
- (3) 12 VDC power port
- (4) 5 VDC USB-B power port
- (5) IR emitter (6x)
- (6) Power indicator LEDs
- (7) Status indicator LED
- (8) IR receiver port (3x)
- (9) IR receiver (1x)

## Safety instructions

### WARNING

- Only use the product as described in this manual.
- Do not use the product if a part is damaged or defective. Replace a damaged or defective device immediately.
- Do not drop the product and avoid bumping.
- This product may only be serviced by a qualified technician for maintenance to reduce the risk of electric shock.
- Disconnect the product from the electrical outlet and other equipment if problems occur.
- Do not expose the product to water or moisture.
- Do not open the product. · If the power cable is damaged, it must be replaced by a special cable or assembly available from the manufacturer or its service agent.
- Only use provided parts.

## Installing the product

-  Make sure all the devices you want to connect have been switched off.
- 1. Plug the IR receiver **A(9)** into the IR receiver port **A(8)**.
-  When using multiple IR receivers **A(9)**, keep a distance of at least 6 meters to avoid interference.
- 2. Plug the IR transmitter **A(5)** into an IR emitter port **A(1)**.
- 3. Place **A(5)** near an IR transmitter of your device.
-  Only 1 **A(5)** can be connected per device.

**i** To avoid interference keep the distance between your device and the IR receiver 10 m apart from each other.

### Connecting the power supply

**i** There are multiple options to connect the IR transmitter **A(2)** to a power supply. Select one of the following:

- Plug a 12 VDC @ 1 A adapter into the 12 VDC power port **A(3)**.
- Plug a USB cable (not included) from your device into the 5 VDC USB-B power port **A(4)**.

The corresponding power indicator LEDs **A(6)** lights up.

### F.A.Q.

1. How do I locate the IR receiver of my device?

- Consult the manual of your device.
- Move the emitter on the surface of the device until a signal is received from the remote control.

2. Why is **A(9)** not responding?

- Check if **A(2)** is pasted on the right position (IR point of your device).
- Change the power supply to the 5 VDC adapter (cable not included).
- Move **A(9)** away from the TV as the electrons may interfere from the TV.

3. Which remote control can be used? · Use the remote control of your device.

### Declaration of Conformity

We, Nedis B.V. declare as manufacturer that the product IREX150AT from our brand Nedis®, produced in China, has been tested according to all relevant CE standards and regulations and that all tests have been passed successfully. This includes, but is not limited to the RED 2014/53/EU regulation.

The complete Declaration of Conformity (and the safety datasheet if applicable) can be found and downloaded via [webshop.nedis.com/IREX150AT#support](http://webshop.nedis.com/IREX150AT#support)

For additional information regarding the compliance, contact the customer service:

Web: [www.nedis.com](http://www.nedis.com)

E-mail: [service@nedis.com](mailto:service@nedis.com)

Nedis B.V., de Tweeling 28

5215 MC 's-Hertogenbosch, the Netherlands

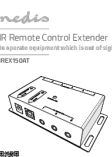
**Nedis BV**



De Tweeling 28, 5215 MC 's-Hertogenbosch The Netherlands

04/20

### Documents / Resources

	<p><a href="#">nedis IR Remote Control Extender</a> [pdf] User Guide IR Remote Control Extender, IREX150AT</p>
---	--

### References

-  [IR Remote Control Extender | Signal range: 10.0 m | 6 Devices | Metal | Anthracite | Nedis](#)
-  [IR Remote Control Extender | Signal range: 10.0 m | 6 Devices | Metal | Anthracite | Nedis](#)
-  [Nedis | Your wholesaler of consumer electronics](#)
-  [Nedis | Your wholesaler of consumer electronics](#)
-  [Nedis | Your wholesaler of consumer electronics](#)
-  [Répéteur de Télécommande IR | 30 - 60 KHz | Pour 6 appareils | 10,0 m de portée | Anthracite | Nedis](#)
-  [Nedis | Your wholesaler of consumer electronics](#)
-  [IR-Extender voor Afstandsbedieningen | 30 - 60 KHz | Voor 6 Apparaten | 10,0 m Bereik | Antraciet | Nedis](#)
-  [Nedis | Su mayorista de confianza en electronica de consumo | Nedis](#)
-  [Dálkově Ovládaný Extender Infračerveného Signálu | 30-60 KHz | Pro 6 Zařízení | Dosah 10,0 m | Antracitový | Nedis](#)
-  [Nedis | Your wholesaler of consumer electronics](#)
-  [Nedis | Your wholesaler of consumer electronics](#)