

# nedis Dashboard Camera User Guide

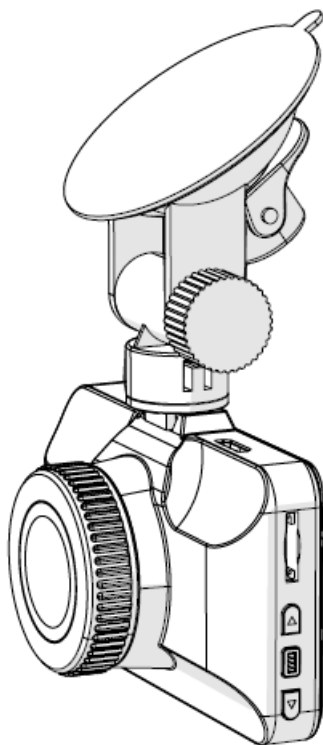
[Home](#) » [nedis](#) » nedis Dashboard Camera User Guide 

## Contents

- 1 Dashboard Camera for Full HD car recordings User Guide
- 2 Main parts
- 3 Installing the product
  - 3.1 Switch off the car engine.
  - 3.2 Option 1:
  - 3.3 Option 2:
- 4 Using the product
  - 4.1 Menu
  - 4.2 Video mode
  - 4.3 Emergency lock
- 5 Intended use
- 6 Specifications
- 7 Safety instructions
- 8 Documents / Resources
  - 8.1 References
- 9 Related Posts

## Dashboard Camera for Full HD car recordings User Guide

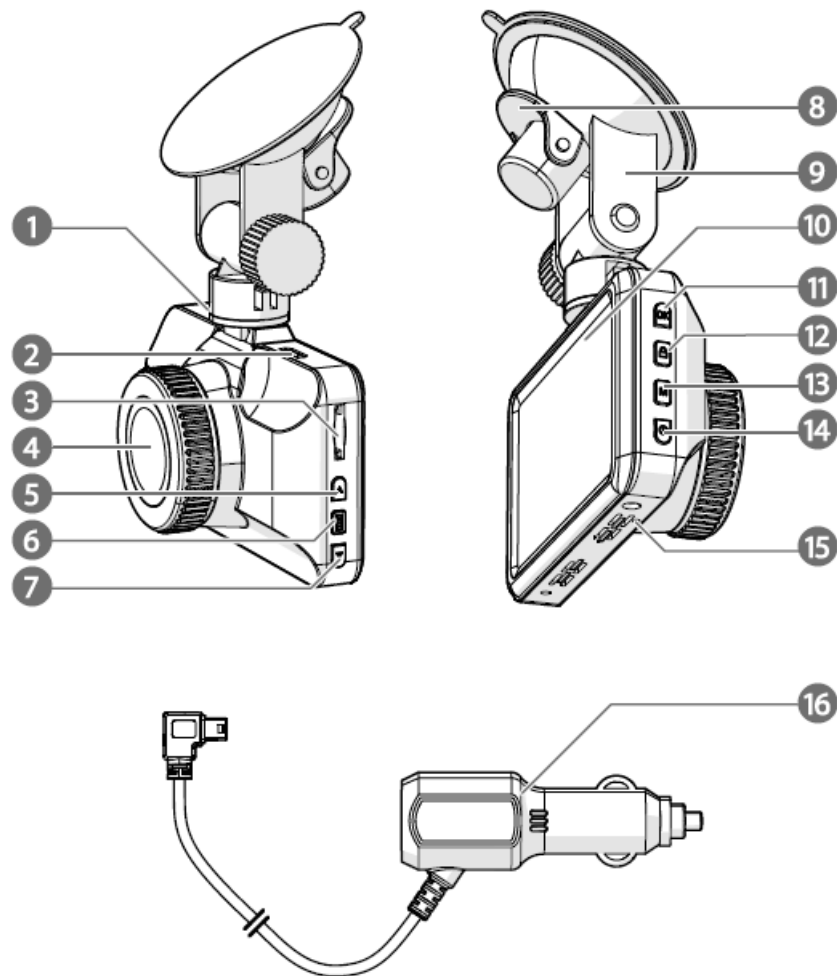
DCAM15BK



For more information see the extended manual online: [ned.is/dcam15bk](http://ned.is/dcam15bk)



## Main parts



<b>1. Mini USB port</b>	<b>1. Suction fix</b>
<b>2. Mini HDMI output</b>	<b>2. Display</b>
<b>3. MicroSD card slot</b>	<b>3. OK button</b>
<b>4. Lens</b>	<b>4. Lock button</b>
<b>5. Up button</b>	<b>5. Mode button</b>
<b>6. Menu button</b>	<b>6. On/off button</b>
<b>7. Down button</b>	<b>7. Speaker</b>
<b>8. Suction fix clip</b>	<b>8. Auxiliary power plug</b>

## Installing the product

Before using the product, the user shall check the applicable laws and regulations on the use of the product. In some jurisdictions, the use of this product can be considered as an invasion of privacy. The mounting of the product on the windshield might be regulated by law in some jurisdictions. It is the user's own responsibility to consult the local laws and regulations before installing and using this product.

## Switch off the car engine.

1. Clean and degrease the spot where you want to fix the product.

Place the product just behind or below the rearview mirror.

2. Place suction fix **9** on the windshield.

3. Use the suction fix clip **8** to fix the product to the windshield.

4. Insert a microSD card (not included) into the microSD card slot **3**.

5. Adjust the position of the lens **4** for optimal view of the road.

- Ensure the product and the power cable are installed and do not interfere with the sight of the driver or impede with the operation of any driving controls.
- Always focus your attention on the road.
- Connecting the product to the power supply

### Option 1:

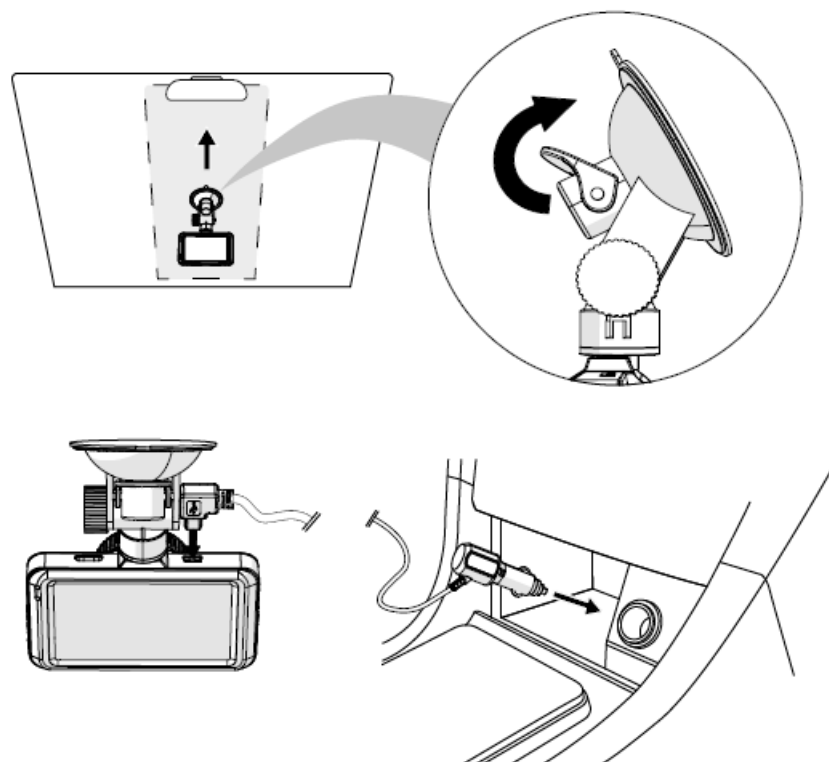
1. Plug the auxiliary power plug Au into the mini USB port **1**.

2. Plug the other end of Au into an auxiliary power outlet.

### Option 2:

1. Charge the product using the USB port **2**.

- While charging a green LED lights up, when fully charged the light is off.
- The product automatically switches on and starts recording when you switch on your car engine.
- The camera switches off 5 seconds after the engine is off.



### Using the product

## Menu

1. Press menu **6** to enter the setup menu interface.
2. Press **5** or **7** to navigate through the menu.
3. Press OK **11** to confirm a selection.
4. Press **6** to exit the menu.

Press **13** to toggle between video mode, photo mode and playback mode.

## Video mode

1. Press **13** to enter the video mode.
  2. Press **11** to start or stop recording.
- The indicator LED will blink blue.  
Press **11** to switch off the LED.
  - The product automatically saves recordings on the SD card.

## Emergency lock

In video mode, press the lock button **12** to save the recording as a read-only file.  
This recording cannot be overwritten or deleted when not connected to a computer.

## Intended use

The **DCAM15BK** is a dashboard camera that can be mounted to the windshield of your vehicle.  
This product is intended to take photos, record videos and playback recordings and is equipped with a parking mode and g-sensor.  
The product is not intended for professional use.  
Any modification of the product may have consequences for safety, warranty and proper functioning.

## Specifications

- **Product:** Dashboard Camera
- **Article number:** DCAM15BK
- **Dimensions (l x w x h):** 87 x 54 x 38 mm
- **Input voltage:** 5 VAC
- **Input current:** 1 A
- **Battery:** Lithium-ion polymer 3.7 VDC / 200 mAh
- **Battery capacity:** 200 mAh
- **Rechargeable:** Yes
- **Storage temperature:** -20 °C – 60 °C
- **Operating temperature:** -10 °C – 50 °C
- **Display:** 3.0 inch HD display
- **Viewing angle:** 120 degrees
- **Video:** Loop video / motion detecting




- **Video format:** .MOV
- **Video encoding:** H.264
- **Video resolution:** 1080p (30fps) / 720p / 848 x 480 / VGA (60fps)
- **Image resolution:** 4032 x 3024 / 3648 x 2736 / 3264 x 2448 / 2592 x 1944 / 2048 x 1536 / 1920 x 1080 / 1280 x 960 / 640 x 480
- **Video output:** HDMI
- **Seamless video:** Yes
- **Boot automatically video:** Support
- **Language:** English, German, French, Italian, Spanish, Dutch, Danish, Swedish, Finnish, Romanian, Hungarian, Czech
- **Recording audio:** Built-in microphone; The microphone can be switched on/off
- **Memory card:** MicroSD card
- **Memory card capacity:** 1 – 32 GB
- **USB interface:** Mini5Pin USB2.0

## Safety instructions

### WARNING

- Ensure you have fully read and understood the instructions in this document before you install or use the product. Keep this document for future reference.
- Only use the product as described in this document.
- Do not use the product if a part is damaged or defective. Replace a damaged or defective product immediately.
- Do not drop the product and avoid bumping.
- Keep the product out of reach from children.
- This product may only be serviced by a qualified technician for maintenance to reduce the risk of electric shock.
- Disconnect the product from the power source and other equipment if problems occur.
- Do not expose the product to water or moisture.
- Non-rechargeable batteries are not to be recharged.
- Do not short-circuit a cell or a battery.
- In the event of a cell leaking, do not allow the liquid to come in contact with the skin or eyes. If contact has been made, wash the affected area with copious amounts of water and seek medical advice.
- Disconnect the power supply before making or breaking the connections to the battery.
- Plug the charger into a grounded power outlet.
- Do not use any charger other than that specifically provided for use with the product.
- Do not cover ventilation openings.
- Be careful when using the product while driving. Always focus your attention on the road.
- Do not place the product near heat sources, this can damage the product.
- Do not expose the product to very hot or very cold temperatures or drastic changes in temperature or humidity.
- Do not install the product within the operation range of the airbag.
- Ensure the product and the power cable are installed and do not interfere with the sight of the driver or impede with the operation of any driving controls.

## Documents / Resources

 <p>nedis Dashboard Camera For Full HD car recordings DCAM15BK</p>	<p><a href="#">nedis Dashboard Camera</a> [pdf] User Guide Dashboard Camera Full HD car recordings, DCAM15BK</p>
 <p>nedis Dashboard Camera For HD car recordings DCAM06BK</p>	<p><a href="#">nedis Dashboard Camera</a> [pdf] User Guide Dashboard Camera, HD car recordings, DCAM06BK</p>
 <p>nedis Dashboard Camera For 4K car recordings DCAM44BK</p>	<p><a href="#">nedis Dashboard Camera</a> [pdf] User Guide Dashboard Camera, DCAM44BK, 4K car recordings</p>

## References

- [Dash Cam | 720p@30fps | 3.0 MPixel | 2.4 " | LCD | Motion detection | Black | Nedis](#)
- [Smart solutions for your daily needs | Nedis](#)
- [Dash Cam | 4k@24fps | 12.0 MPixel | 2.4 " | LCD | Parking sensor | Motion detection | Night view | Black | Nedis](#)