



## NEC PA Series LCD Laser Projectors User Manual

[Home](#) » [NEC](#) » NEC PA Series LCD Laser Projectors User Manual 

# SHARP / NEC



### PA Series

Professional Installation Projectors ideal for corporate, higher education and museum applications

LCD laser installation projectors extreme brightness captivates audiences in conference rooms, auditoriums and sanctuaries

NEC PA Series Projectors


## Contents

- 1 Powerful Tools
- 2 Integrated
- 3 Built-In HDBaseT Support
- 4 Advanced Software Features
- 5 Unique Features
- 6 Warranty
- 7 In the Box
- 8 Accessories
- 9 Ordering Model Numbers
- 10 Documents / Resources
  - 10.1 References

## Powerful Tools

- Multi-display support with Picture by Picture/Picture in Picture
- TileMatrix (internal multi-screen splitter) enables 4Kx2K resolution utilizing 4 projectors without the need for external hardware
- Built-in daisy chain capabilities support multi-display applications
- Seamlessly blend multiple images with integrated edge blending capabilities

## Integrated

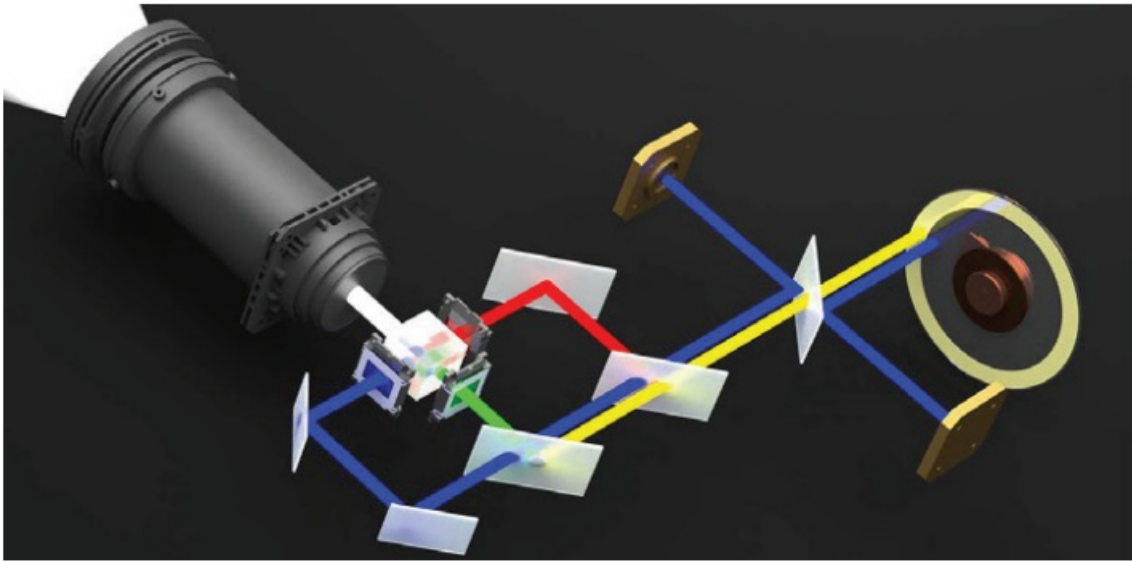
-  4K Ready – Display stunning 4K 60P content using NEC's proprietary high performance video processing/scaling chip without the loss of critical details.
- Integrated software applications such as AMX Beacon, Crestron Roomview, Extron XTP and PJ Link allow for complete control system support
- Learning of basic control of competitors product reduces the need for reprogramming of a control system lowering the cost of your installation by eliminating the need for costly reprogramming of a control system. (supports competitors commands, call NEC for complete list)

## Flexible

- Enjoy greater installation flexibility with motorized bayonet style lenses providing quick and easy exchanges. Lens throw distances range from 4.25 to 141ft
- Roll-free installation capabilities make these projector ideal for almost any install environment, including portrait orientation

## Laser

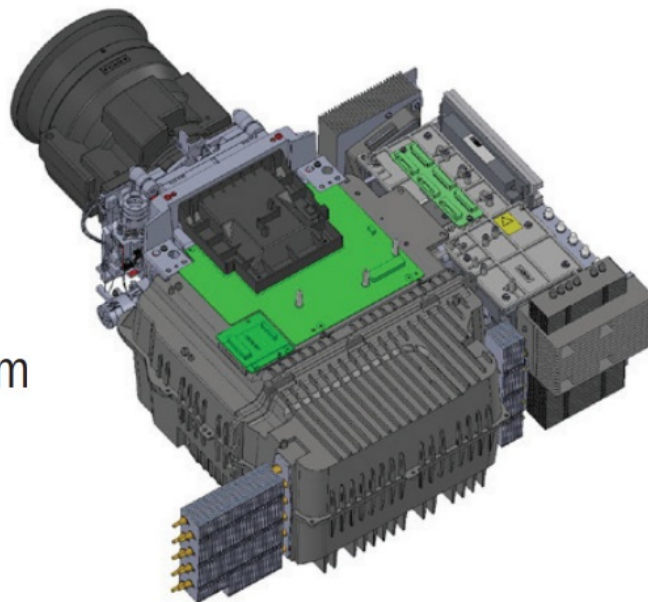
- Images appear immediately after power on due to instantaneous start up of the laser
- Dual blue laser systems provide best in class white balance over the life of the projector
- Inorganic optical components create longer lifetime and greater peace of mind



### Filter Free

- Filter free LCD projector
- IP5X certified Sealed LCD cooling system prevents dust from reaching the optics and eliminates the need for a filter
- External air never enters the optical path
- Dust artifacts cannot influence picture quality or decrease image brightness
- LCD Laser Projector that is virtually maintenance free!

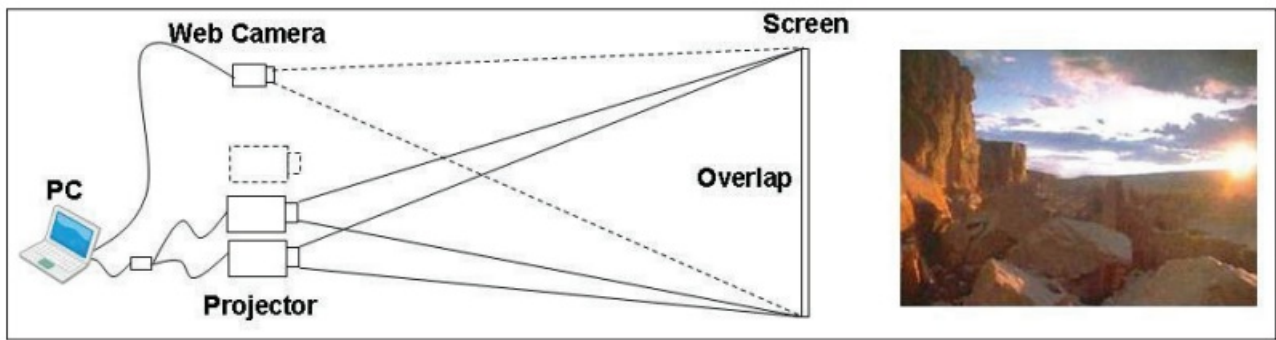
Sealed LCD  
Cooling System



**IP5X**  
**RATED**  
OPTICAL BLOCK

### Stacking correction

The industry's first built-in stacking correction capabilities (up to four projectors) allows the projectors to boost an image's brightness up to 68,000 lumens, which is ideal for largesized screens and environments with heavy ambient light. This feature also prevents the complete loss of an image, which can happen when using only one projector.



### Edge blending

This function seamlessly blends multiple projected images to display a single highresolution image.



### ProAssist™

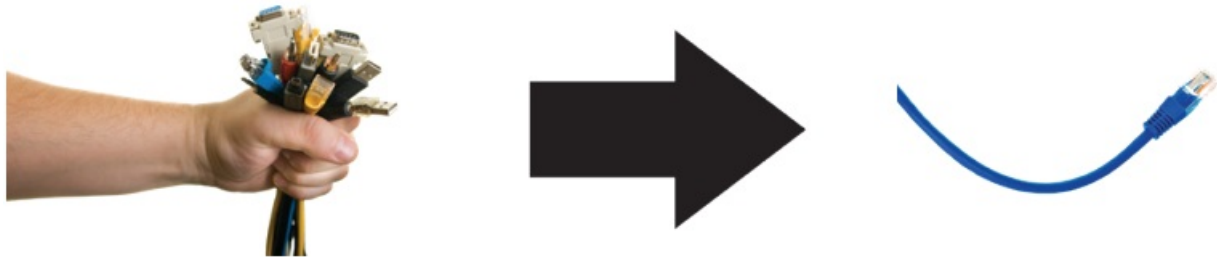
Projector management software for installation professionals provides full projector control for multiple screens to create the perfect image. Controls such as input switching, picture, lens, edge blending, uniformity and gamma control are adjustable through the GUI.

# ProAssist™



## Built-In HDBaseT Support

Simplify your installations with HDBaseT. Optimized for video applications and supporting uncompressed full HD digital video, audio, ethernet, power and various control signals. With only a single cable (up to 100m) to run, infrastructure and labor costs are reduced, installations are significantly easier, and there is no cable clutter to manage. With uncompressed HD video support, images have never been more stunning. What's more, control signals are contained in the same cable.



## Get Connected with a Wide Selection of Inputs

- Multiple Digital computer inputs ensure quick switching between presentations
- Three audio inputs (HDMI1TM & HDMI2TM and HDBaseT) make it easy to add sound to enhance your presentations

## Remote control

Wired and wireless backlit remote allows you to adjust for complete control of the projectors menu structure in a well lit or dark environment. Direct controls such as lamp mode, aspect ratio, volume and input selection eliminates multiple button pushes.



## Digital Inputs

Among the PA Series' wide selection of inputs are dual HDMI w/ HDCP and HDBaseT w/ HDCP for connecting to



high-definition sources such as Bluray players, cable boxes, satellite receivers and personal computers.



### **Cable Cover**

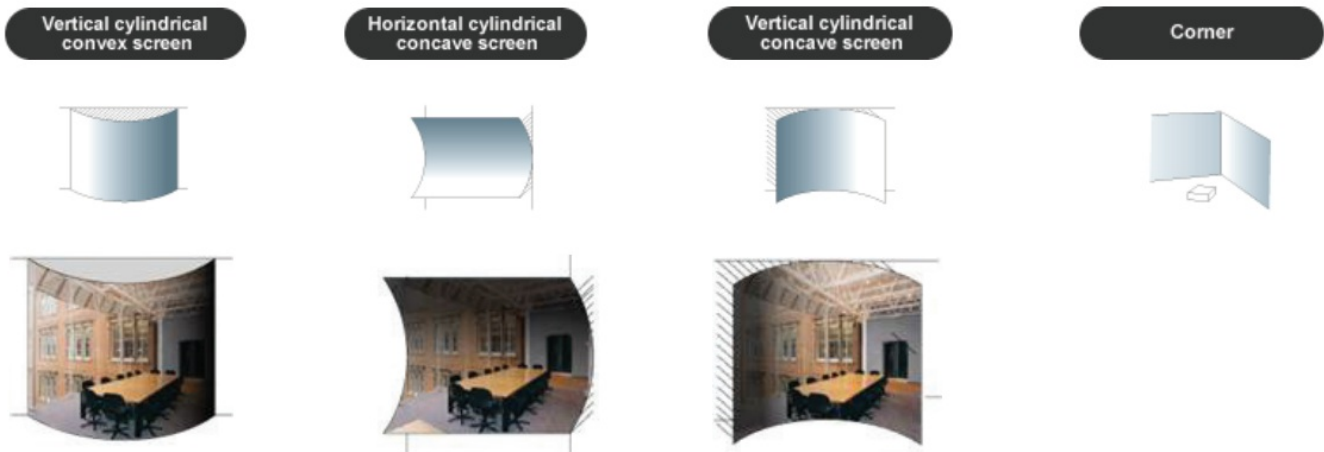
This included accessory creates a clean look for your installation, while hiding signal cables and the power cord.



### **Advanced Software Features**

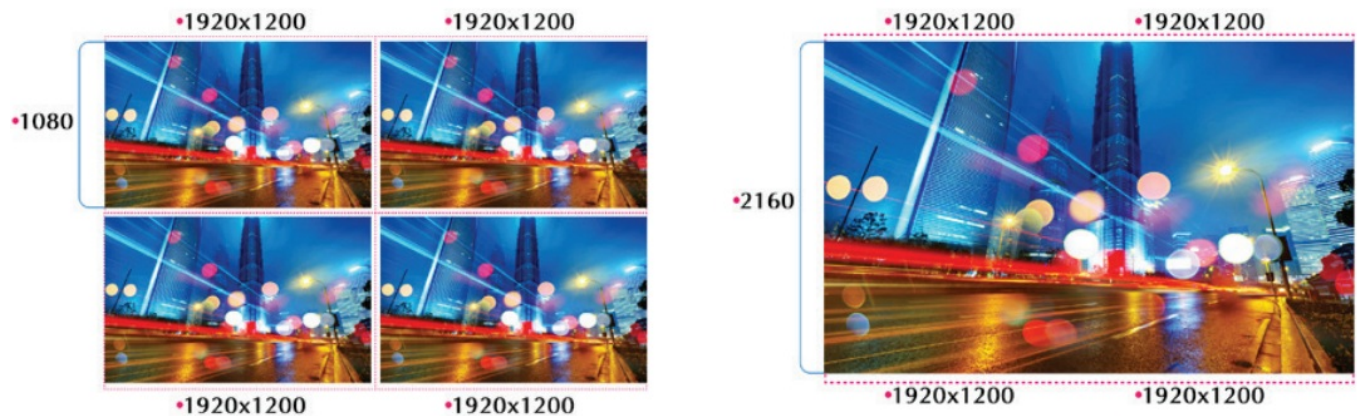
#### **Geometric Correction**

Projecting an image isn't confined to a standard flat screen or wall with the NEC PA Series. Geometric correction allows these models to project an image on spheres, cylinders, corner angles and many more non-standard surfaces.



### Screen Splitter

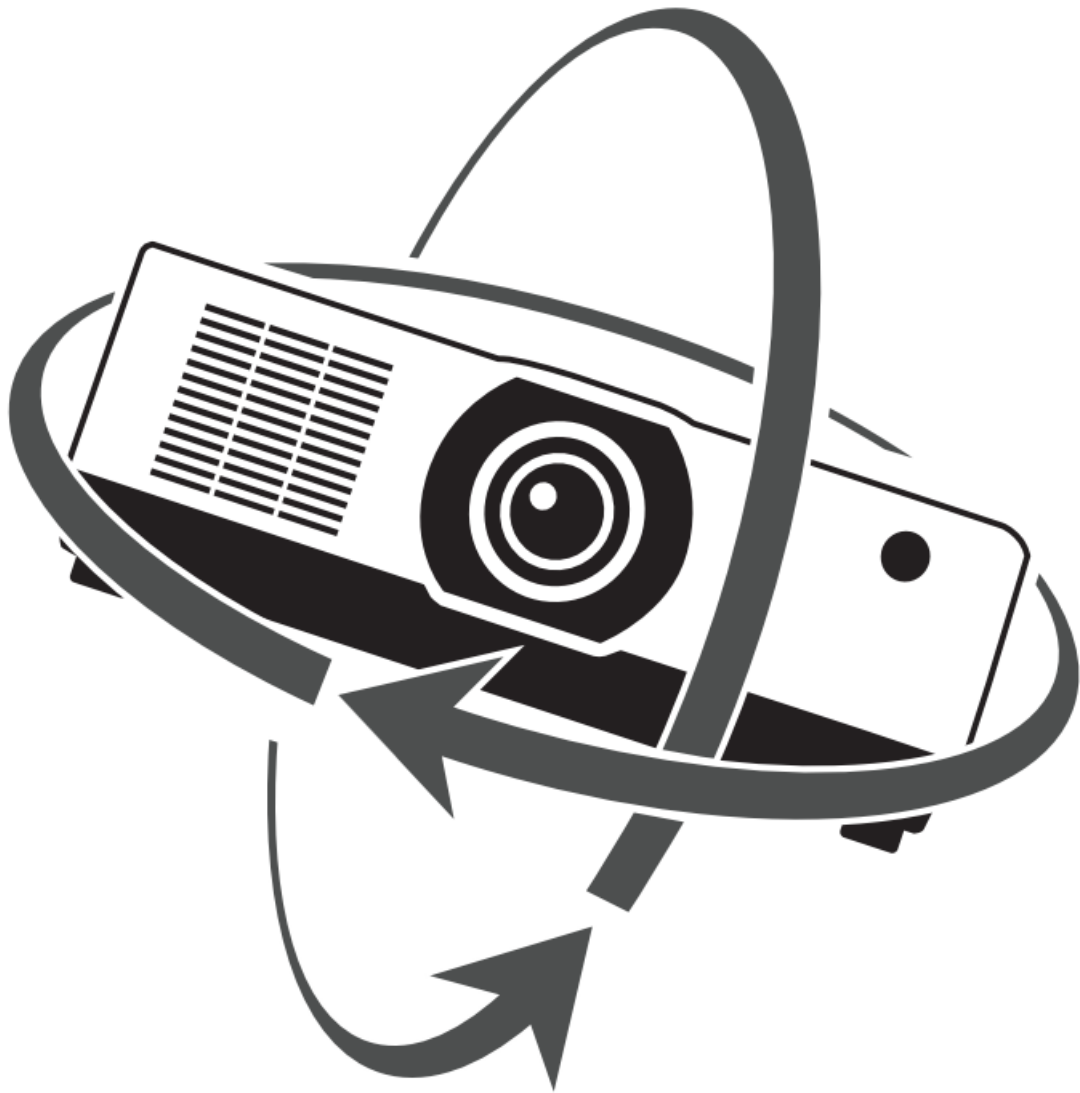
NEC is committed to bringing the latest and greatest innovation to projectors. Multi-display capabilities and TileMatrix technologies are integrated into the new PA Series projectors. This processing is all done internally and therefore eliminates the additional hardware typically required to produce a beautiful 4K resolution image.



### Screen Splitter (Multi Display) by Daisy Chain

### Roll Free

When installation requirements dictate the projector needs to be placed at different angles the PA Series with Roll Free capabilities assures it is the correct projector of choice.



## Unique Features

**Variable audio-out** enables the remote control to be used to adjust volume of self-powered external speakers that are connected to the projector. In stand-by mode, the audio-out stays active, allowing the last input used to pass to the self-powered external speakers.

**Advanced AccuBlend™** ensures detailed images when nonnative resolution sources are connected to the projector

**64-step image magnification** with location control

**Built-in HTTP page** for control and monitoring over a LAN network.

Email notification of error messages or lamp end-of-life can be sent to remote locations.

## Warranty

Registered owners receive a five (5) years or 20,000 hours (whichever comes first) parts and labor warranty including InstaCare next business day exchange.

## In the Box

Remote control, batteries, power cord, cable cover, user's manual on CD-ROM, quick start guide, product registration card.

## Accessories



RMT-PJ40	Replacement Remote Control
Optional Lenses	NP53ZL, NP54ZL, NP55ZL
IPJ2000CM	Ceiling Mount
AEC006009	Adjustable Extension Column, 6" – 9"
AEC012018	Adjustable Extension Column, 12" – 18" Adjustable
AEC0203	Extension Column, 2' – 3'
AEC0305	Adjustable Extension Column, 3' – 5'
RGBCBL-PJPX	RGB Signal Cable

## Ordering Model Numbers

NP-PA1505UL-B	NP-PA1705UL-B
NP-PA1505UL-W	NP-PA1705UL-W



LASER APERTURE OUVERTURE LASER .

CLASS 1 LASER PRODUCT IEC 60825-1:2014 APPAREIL A LASER DE CLASSE 1

FOR USA CLASS 3R LASER PRODUCT AVOID DIRECT EYE EXPOSURE LASER RADIATION

WAVE LENGTH: 455 nm MAX OUTPUT: 333 mW IEC 60825-1:2007 24L89881

← 23.6" (599mm) →



↑ 19.3" (490mm)  
↓



↑ 9.4" (238mm)  
↓

		NP PA1505UL NP PA1705UL	
Light Output (lumens)	Center	15,000	17,000
	Normal	14,000	16,000
	ECO Mode OFF	13,500	15,300
Resolution	Native	WUXGA1920x1200	
	Maximum	4K4096x2160	
Contrast Ratio (up to)		3,000,000:1 (with Dynamic Contrast)	
laser life (up to)		20,000 hours	
Screen Size (diagonal)		1.52 to 12.7m, NP53ZL, NP54ZL, NPSSZL	
Throw Ratio	NP53ZL	0.86 – 1.25:1	
	NP54ZL	1.24 – 2.01:1	
	NPSSZL	1.98 – 3.95:1	
Projection Distance		3.58 to 141 ft.11.09 to 43m	
Projection Angle		5.8 to 18.1° tele/ 11.4 to 25.8° wide	

Lens			Motorized
	Zoom	NP53ZL	1.45x
		NP54ZL	1.62x
		NP55ZL	1.99x
			Motorized
	Focus	NP53ZL	Motorized zoom! focus, F-1.8 to 2.24, f- 19.0 – 27.6mm, 3.7 lbs./ 5.3 kg
		NP54ZL	Motorized zoom / focus, F=1.8 to 2.24, f= 27.7 – 44.9mm, 3.7 lbs./ 4.5 kg
		NP552L	Motorized zoom I focus, F=1.84 to 2.58, f= 43.8 – 87.2mm, 3.7 lbs. 1 5.4 kg
	Shift		+1.25% horizontal, +F 65%vedical
Shutter		laser Shutter	
Keystone Correction			+1.40° horizontal, +1.30° vertical
Synchronization Range	Horizontal		24-153kHz
	Vertical		50120Hz
Supported Video Standard			NTSC, NTSC4.43, PAL, PAL-60, PAL-M, PAL-N, SECAM
SD/HD Video Signal Compatibility			480i, 480p, 576i, 576p, 720p, 1080i, 1080p, 4K
PC Signal Compatibility			VGA, SVGA XGA, SXGA, SXGA+, UXGA,WUXGA, Quad HD
Macintosh Compatibility			Yes
Input Terminals	RGB1 (digital)		HDMI (V2.0) w/HDCP (V1.4/2.2)
	RGB2(digital)		HDMI (V2.0) w/HDCP (V1.4/2.2)
	RGB3 (digital)		HDBaseT w/HDCP (V1.4/2.2)
	RGB4 (digital )		3G SDI (SMPTE ST 424M / SMPTE 292M)
Output Terminals	Monitor Out		HDBaseT Repeater
	Audio Out		Stereo Mini Jack
External Control			RS-232, IR,Wired Remote, HDBaseT, DOC/CI, RJ-45, USB(USB 2.0)
Sync Compatibility			Separate Sync / Composite Sync / Sync on G
Power Requirements			100.240VAC, 50/60 Hz
Input Current			11.6A – 5.1A12.8A – 5.6A
Power Consumption			
(Normal/Silent Mode/Network Standby/Standby)			960W! 855W) 0.4W) 0.15W1035W 1 855W / 0.4W) 0.15W
Installation Orientation			Floor/Front Floor)Rear, Ceiling/Front, Ceiling/Rear

Product Dimensions (WxDxH)		23.6 x 19.3 x 9.4 in.) 599 x 490 x 238 mm
Net Weight		63.7 lbs. / 28.9 kg
Shipping Dimensions (WxDxH)		29.1 x 24.8x 15.0 in.! 739 x 629 x 382 mm
Gross Weight		71.9 lbs. / 32.6 kg
Fan Noise		38 dB normal) 35 dB silent mode 43 dB normal) 37 dB silent mode
Regulations	US	USA U160950.1 : 2nd edition, FCC Part15 Subpart B(ANSI C63.4.2 014)
	Canada	CAN/CSA C22.2 No.62368-1-18,3rd Edition, ICES-003 Issue 7(ANSI C63.4-2014)
Operating	Temperature	32-113°F 10.45°C
	Humidity	20%- 80% (non-condensing)
Storage	Temperature	14-122°F) -10 50°C
	Humidity	20%- 80% (non-condensing)



\* Lens does not ship with the projector.

\* Additional accessories are available, including screens, carts, mount accessories and replacement cables.

Visit [www.sharpnecdisplay.us.com](http://www.sharpnecdisplay.us.com) for details.

©2023 Sharp NEC Display Solutions of America, Inc. | All rights reserved.

All other brand or product names are trademarks or registered trademarks of their respective holders.

Rev. 08.02.23

Sharp NEC Display Solutions of America

[www.sharpnecdisplays.us](http://www.sharpnecdisplays.us)

## Documents / Resources

	<p><b><a href="#">NEC PA Series LCD Laser Projectors</a></b> [pdf] User Manual  PA Series LCD Laser Projectors, PA Series, LCD Laser Projectors, Laser Projectors, Projectors  , NP-PA1505UL, NP-PA1705UL</p>
--	---

## References

- [sharpnecdisplay.us.com](http://sharpnecdisplay.us.com)
- [LCD Displays, Projectors, Desktop Monitors, Digital Signage](#)