



NEATBAR-PAD-BUNDLE-Zoom Bar and Neat Pad User Manual

[Home](#) » [neat](#) » NEATBAR-PAD-BUNDLE-Zoom Bar and Neat Pad User Manual 

Contents

- [1 NEATBAR-PAD-BUNDLE-Zoom Bar and Neat Pad](#)
- [2 Simple setup](#)
- [3 Neat Bar](#)
- [4 In the box](#)
- [5 Neat Pad](#)
- [6 In the box](#)
- [7 Mounting & releasing](#)
- [8 Size & weight](#)
- [9 Setup & connectivity](#)
- [10 Documents / Resources](#)
 - [10.1 References](#)
- [11 Related Posts](#)



NEATBAR-PAD-BUNDLE-Zoom Bar and Neat Pad



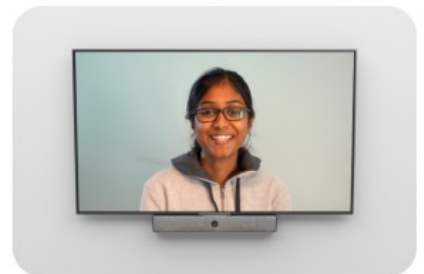
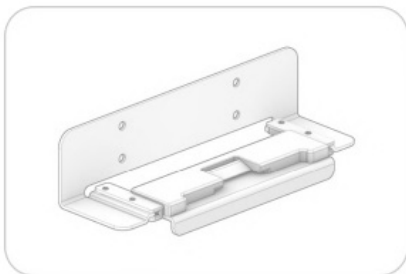
- Neat Bar is a compact and highly capable meeting device.
- It's perfect for bringing superior quality audio and video to your huddle, focus and meeting spaces.
- Neat Bar includes Camera, Speakers, Microphones and environmental sensors all in one compact design.
- Neat Bar comes with a dedicated Neat Pad Controller and optional Scheduling Display.

Simple setup

All you need is in the box, including mounts, cables and clear instructions. So it's easy for anyone to install and set-up, above or below one or two screens.



Wall mount



Screen mount

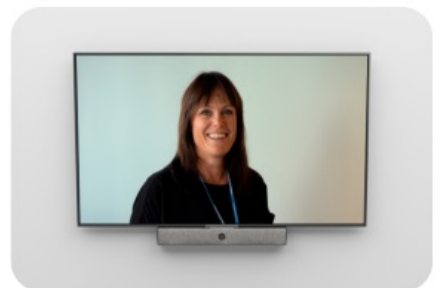
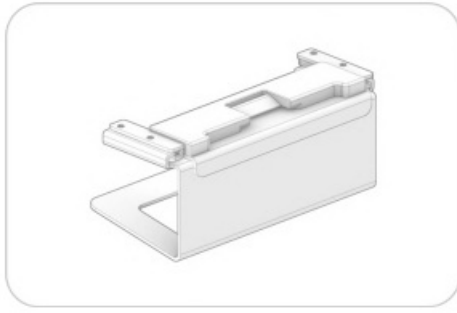


Table stand



Neat Bar

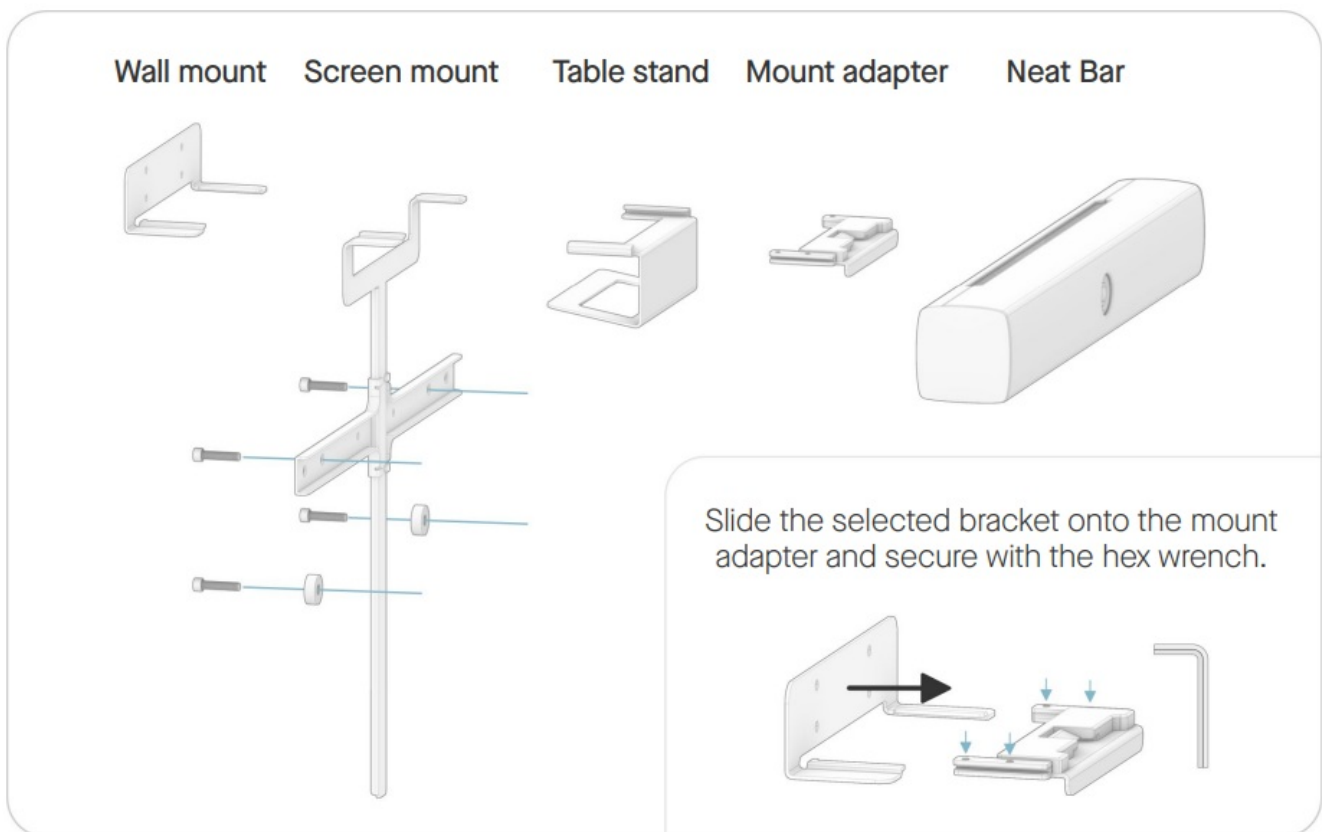
Neat Bar comes with everything you need to get started, including cables, wall mount, screen mount and table stand.



- 4 × M₆ screw (0.94 in / 24 mm) for VESA mount
- 4 × M₆ screw (0.94 in / 24 mm) for VESA mount
- 2 × spacer to secure parallel TV mount
- 1 × 5 mm hex key for the screen mount
- 1 × 2 mm hex key for the mount adapter

In the box

- Neat Bar: All-in-one audio and video device
- HDMI cable: 6.5' (2m)
- Ethernet cable: 9.8' (3m)
- Power cord: 9.8' (3m)
- Mount adapter, wall mount, screen mount and table stand



- Screws for mounting to the wall are not included. Mounting on a wall should only be performed by qualified personnel in line with applicable facility and state regulations. The wall and the mounting equipment must safely withstand the load of the product.

Neat Pad

Neat Pad works as a Controller for Neat Bar and can also be configured as a Scheduling Display for the Meeting Room. It comes with everything you need to get started, including cables and mounting options.



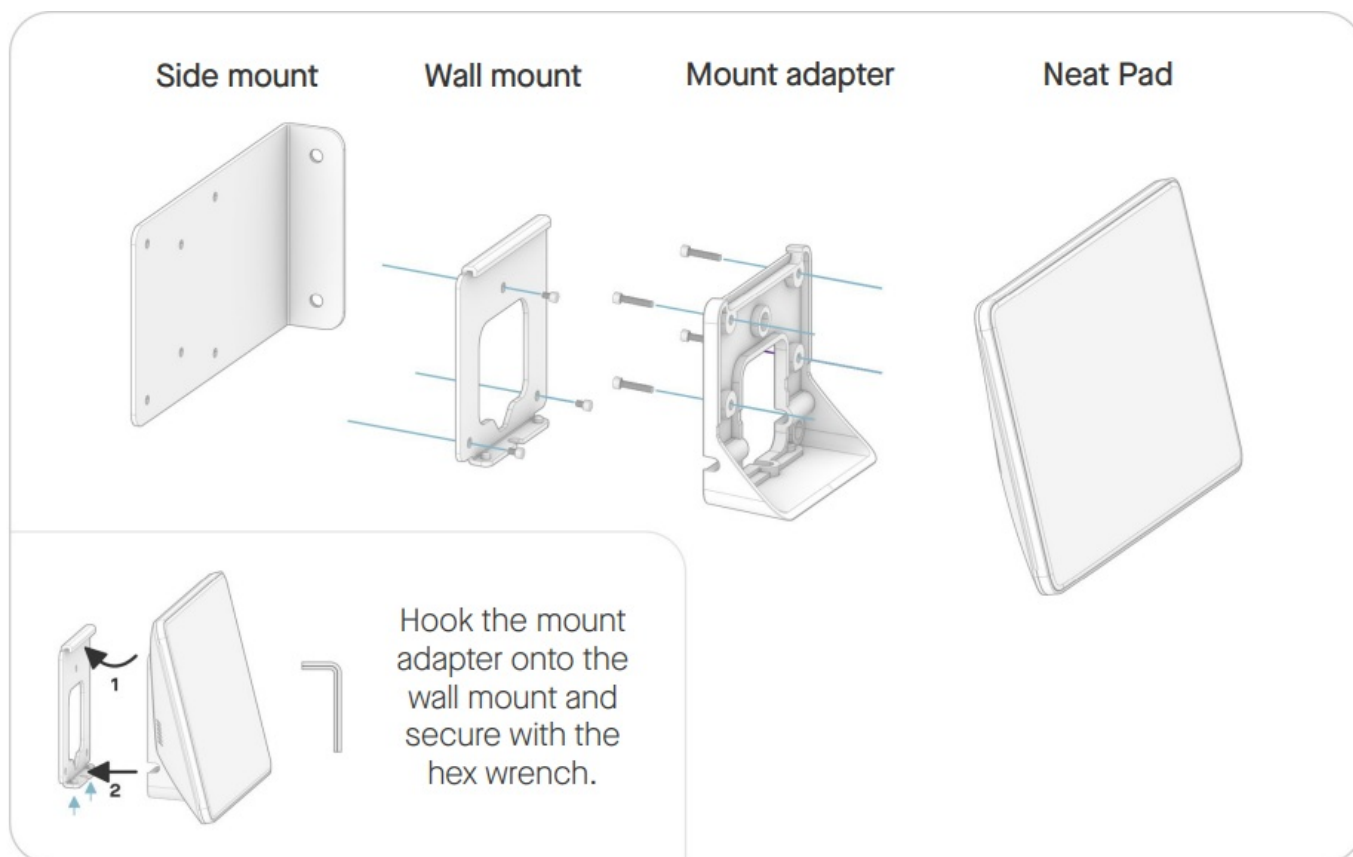
- 4 × M⁴ screw (0.30 in / 7.5 mm) for the wall mount
- 3 × M⁴ screw (0.19 in / 4.7 mm) for the side mount
- 1 × 2.5 mm hex key for the adapters 1 × 2 mm hex key to secure Neat Pad to the wall mount

In the box

Neat Pad: 8-inch touch screen

2 × Ethernet cable: 9.8' (3m) + 16.4' (5m) PoE power adapter

Mount adapter, side mount and wall mount

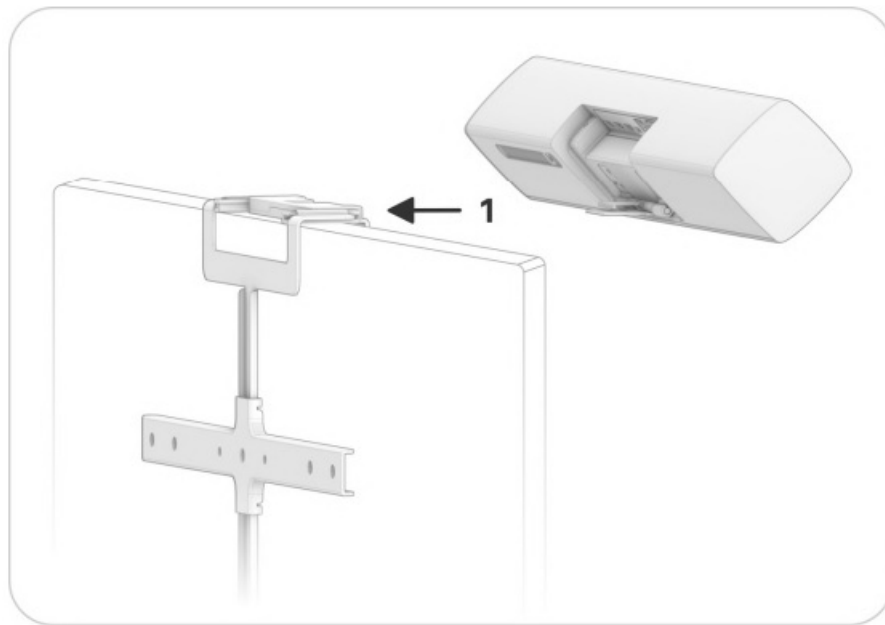


Screws for mounting to the wall are not included. Mounting on a wall should only be performed by qualified personnel in line with applicable facility and state regulations. The wall and the mounting equipment must safely withstand the load of the product.

Mounting & releasing

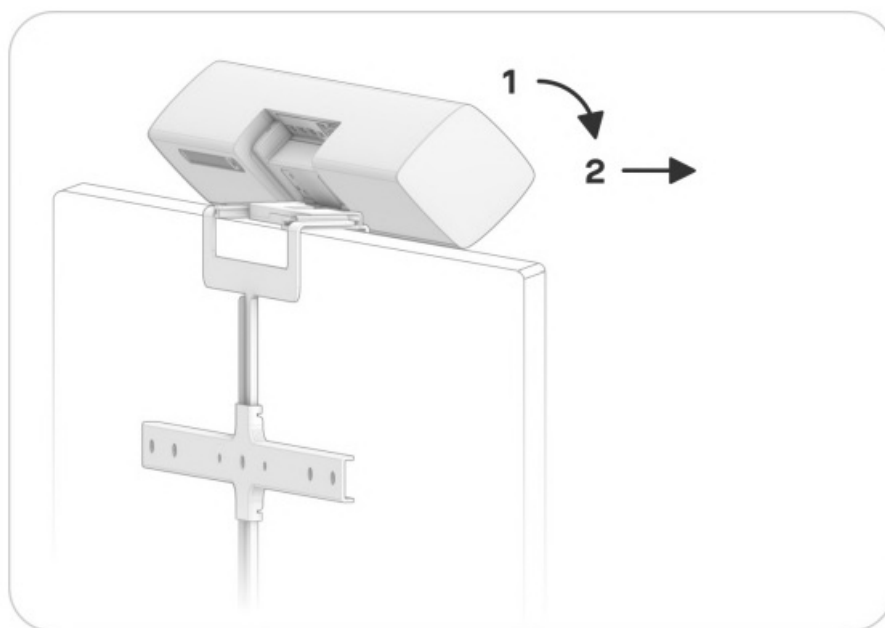
- **Mounting**

Slide Neat Bar onto the selected mounting option (1). When fully inserted tilt Neat Bar back to horizontal and check if it is secure by carefully pulling it towards you.

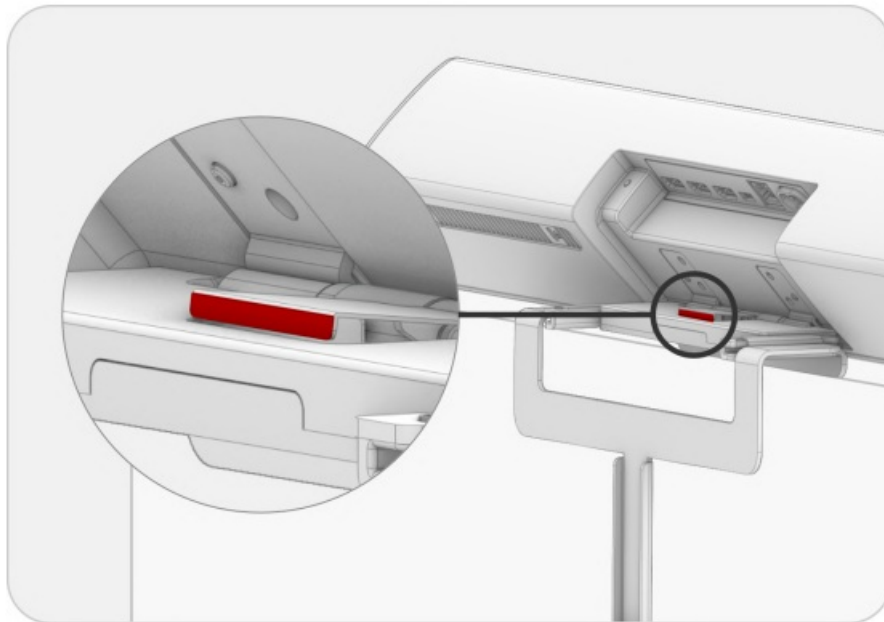


- **Releasing**

To release Neat Bar from the selected mounting option, tilt the unit to maximum tilt (1) and carefully slide the unit towards you (2).



- **Warning:** Do not leave Neat Bar in a max tilted position with the red indicator showing as it is not secured by the lock spring.



Size & weight

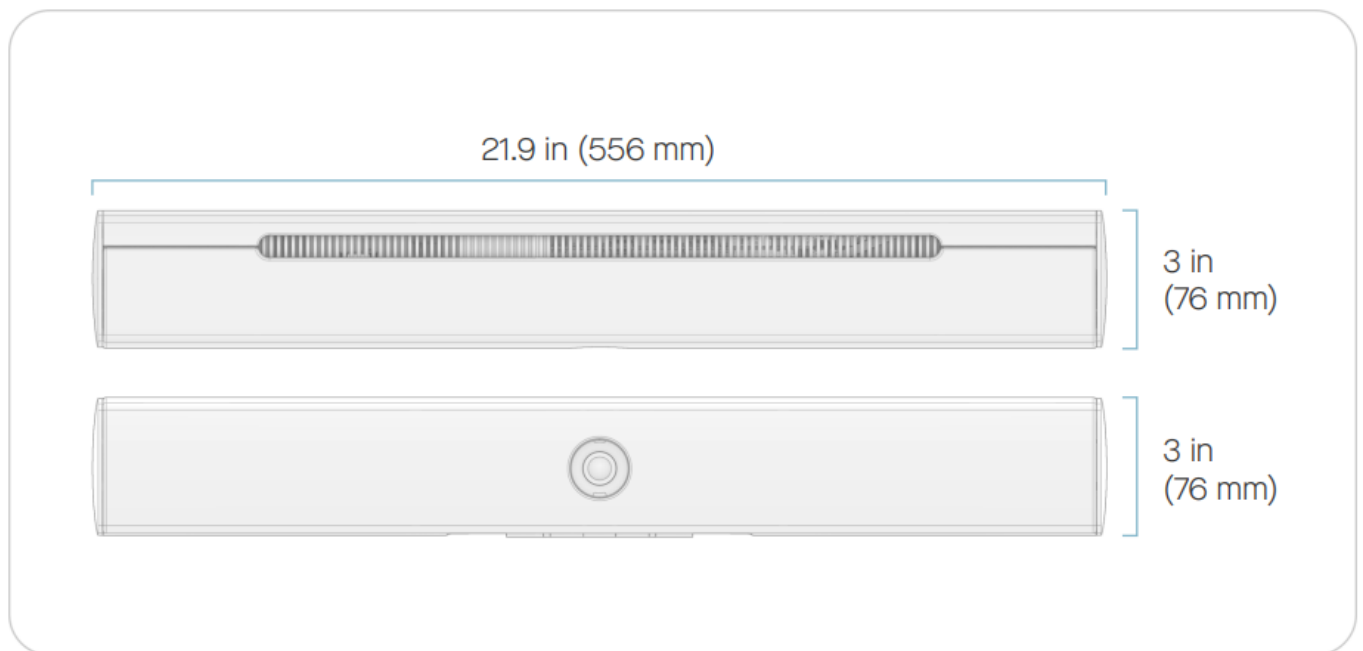
Neat Bar

Width: 21.9 in (556 mm)

Height: 3 in (76 mm)

Depth: 3 in (76 mm)

Weight: 3.75 pounds (1.7 kg)



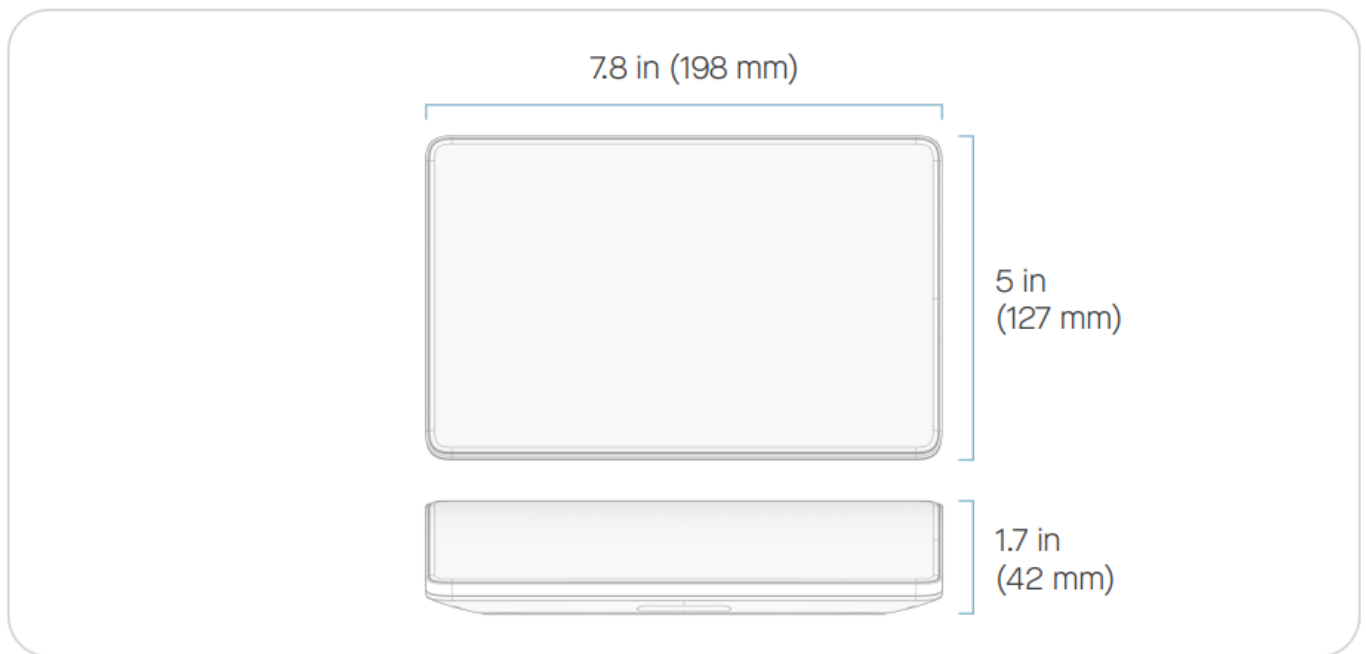
Neat Pad

Width: 7.8 in (198 mm)

Height: 1.7 in (42 mm)

Depth: 5 in (127 mm)

Weight: 1.15 pounds (520 g)



Setup & connectivity

Setup

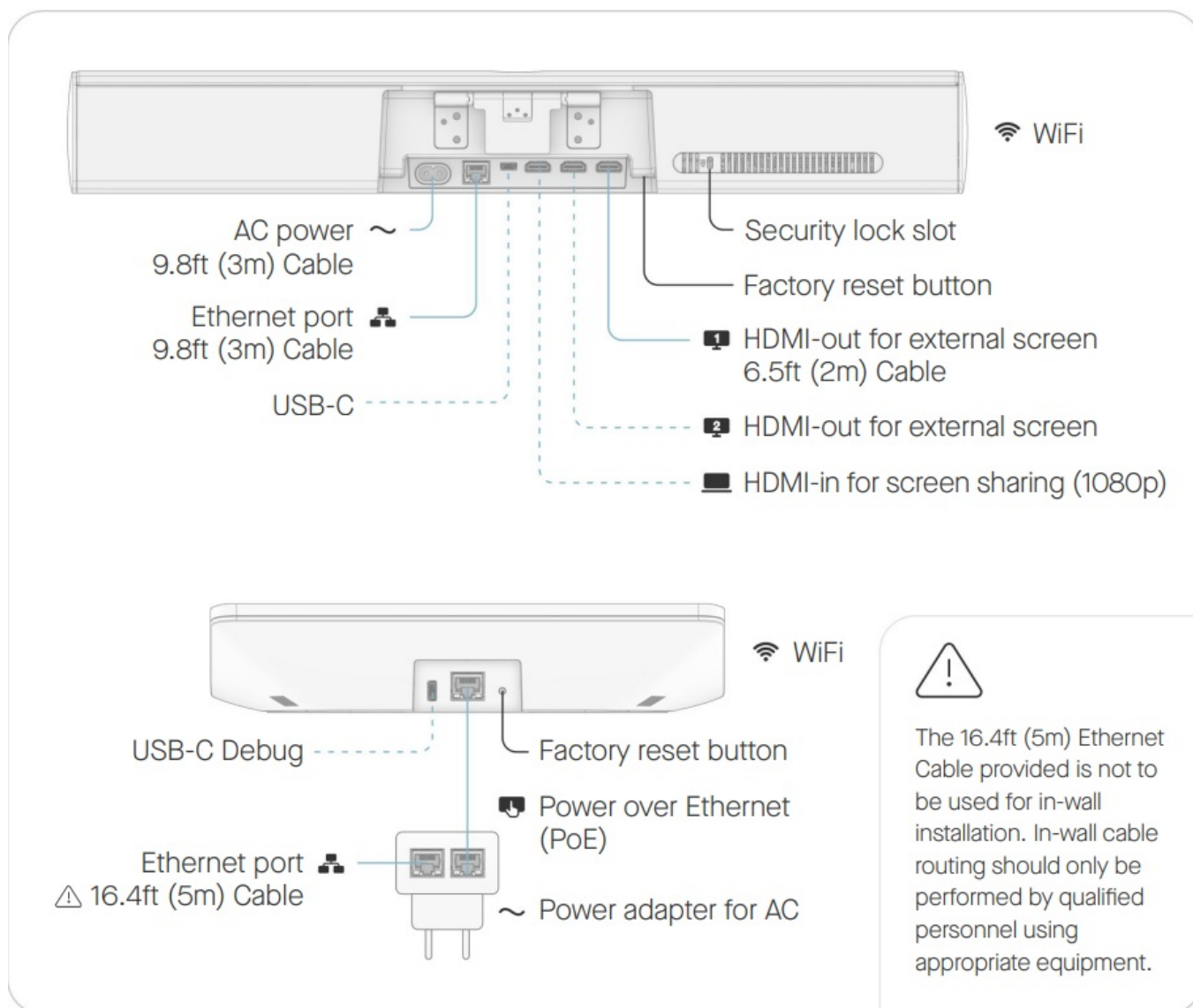
Use the provided cables to set up Neat Bar.

Connect the cables according to the illustration. Cables marked are included. Cables marked are optional and not required for basic use of the system.

Requirements for a complete setup

Display

Internet connection Video service



Environmental Requirements

Ambient operating temperature: 32° to 95° F (0° – 35° C)

Storage temperature: –4° to 140° F (-20° – 60° C)

Relative humidity: 10% to 90%

Additional Product Information

<https://neat.no/bar>

Neat Bar and Neat Pad – User Manual rev14

Documents / Resources



[neat NEATBAR-PAD-BUNDLE-Zoom Bar and Neat Pad](#) [pdf] User Manual
NEATBAR-PAD-BUNDLE-Zoom, Bar and Neat Pad, NEATBAR-PAD-BUNDLE-Zoom Bar and Neat Pad, Neat Pad

References

- [neat Neat Bar - Neat](#)

