



Neat Pad Software User Guide

[Home](#) » [neat](#) » Neat Pad Software User Guide 

Neat Pad

Console user guide
For Microsoft Teams

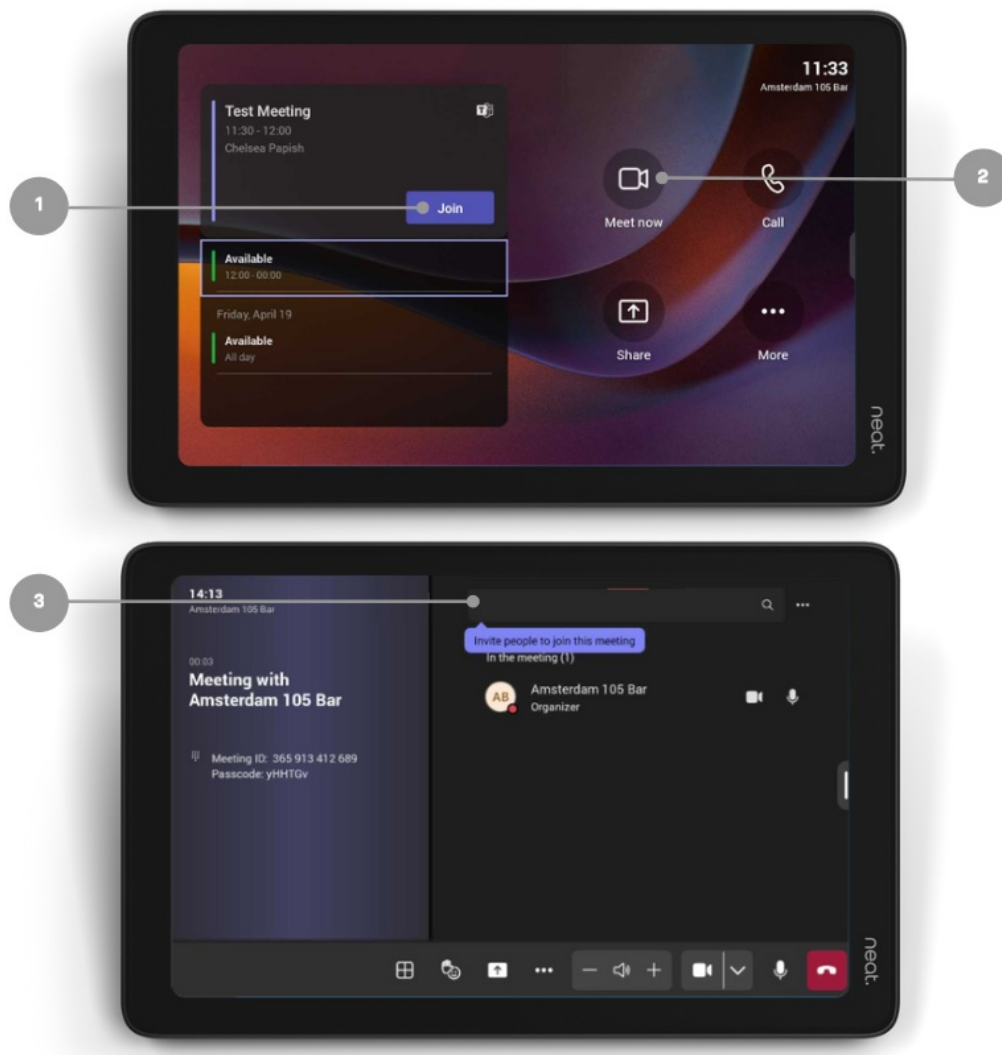


Contents

- 1 Join and start a meeting
- 2 Join with meeting ID
- 3 Join with Proximity Join
- 4 In-meeting controls
- 5 In-meeting camera control
- 6 Share content via cast
- 7 Share content via HDMI
- 8 Documents / Resources
- 8.1 References

Join and start a meeting

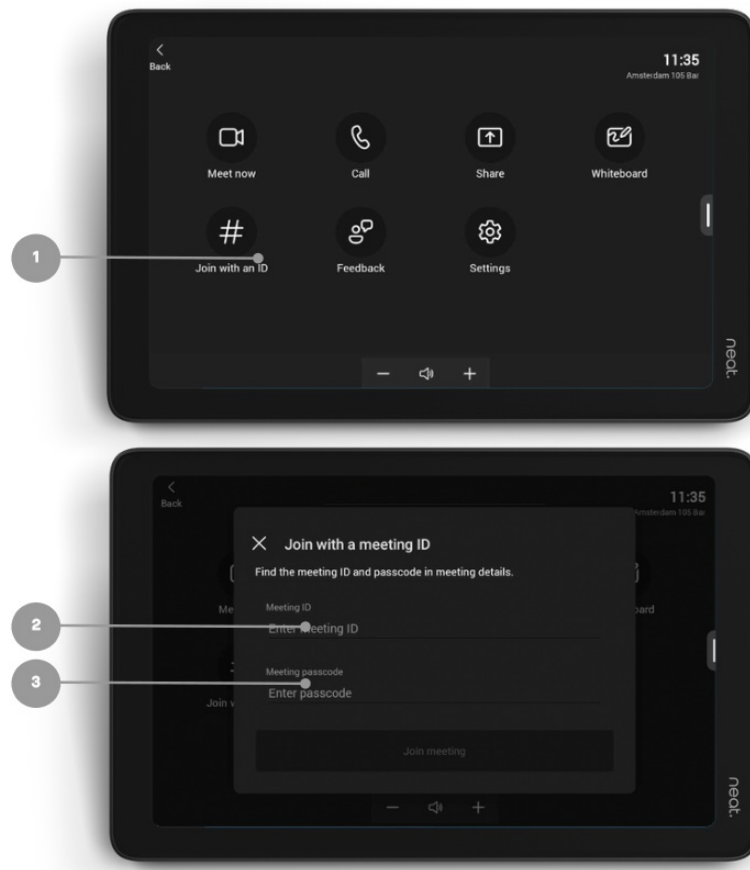
1. To join a scheduled meeting: select Join from the list of scheduled meetings.
2. To start an instant meeting: select Meet now.
3. A meeting will launch and a search bar will be available to invite participants into your meeting.



Join with meeting ID

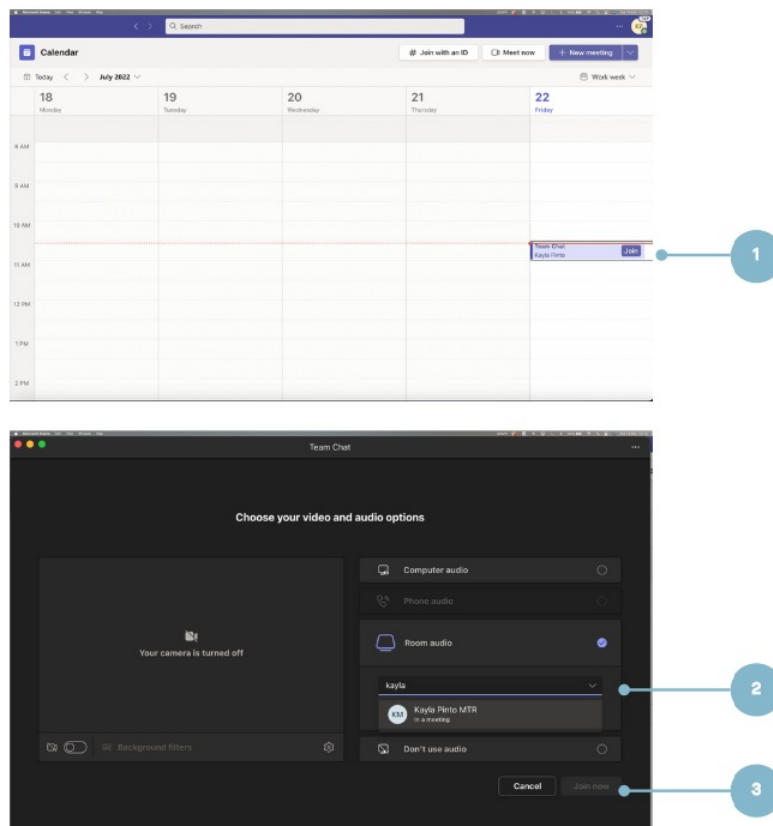
Select More from the home screen.

1. Select Join with Meeting ID.1.
 2. Enter meeting ID.2.
 3. Enter password if applicable.3.
- Click Join Meeting.

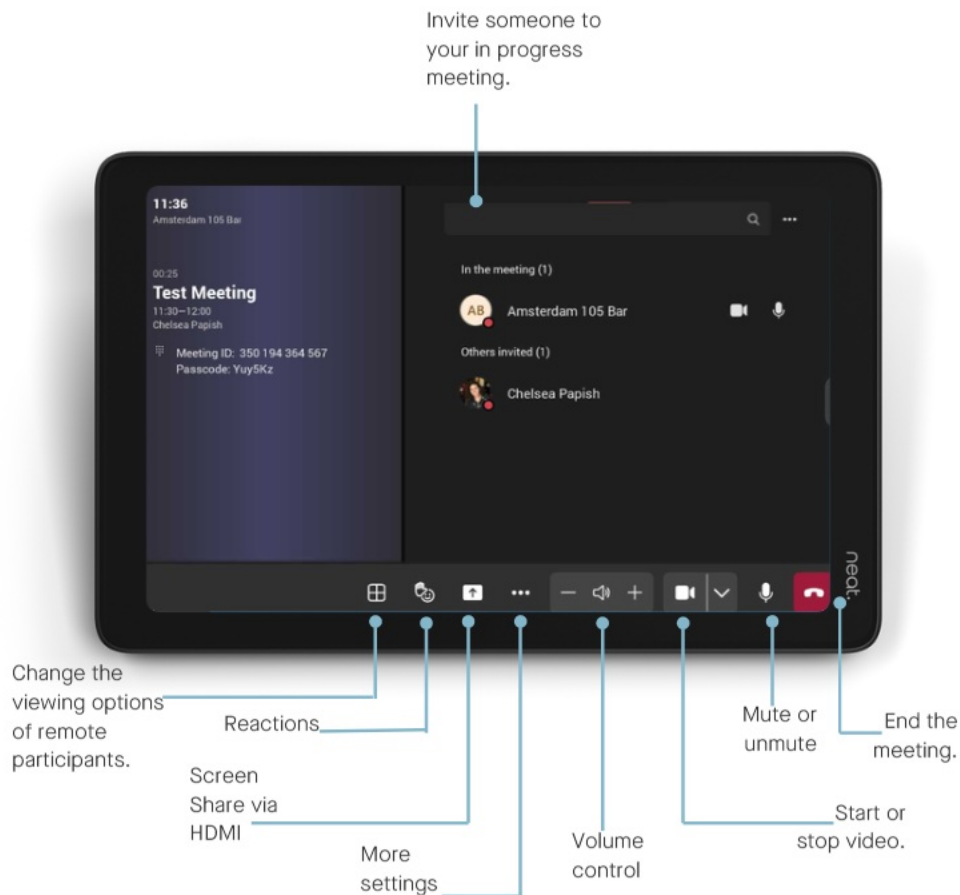


Join with Proximity Join

1. Select Join from your Teams calendar on your laptop.
2. Search for the Teams Room under Room audio.
3. Select Join now.



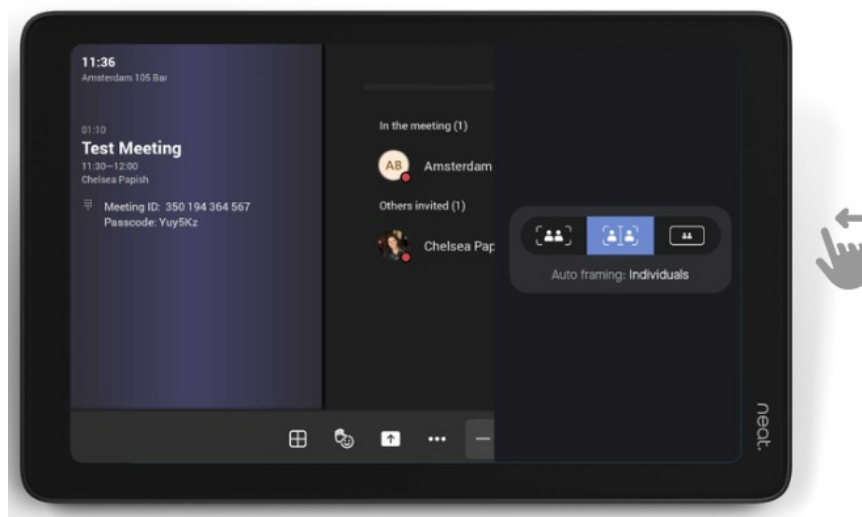
In-meeting controls



In-meeting camera control

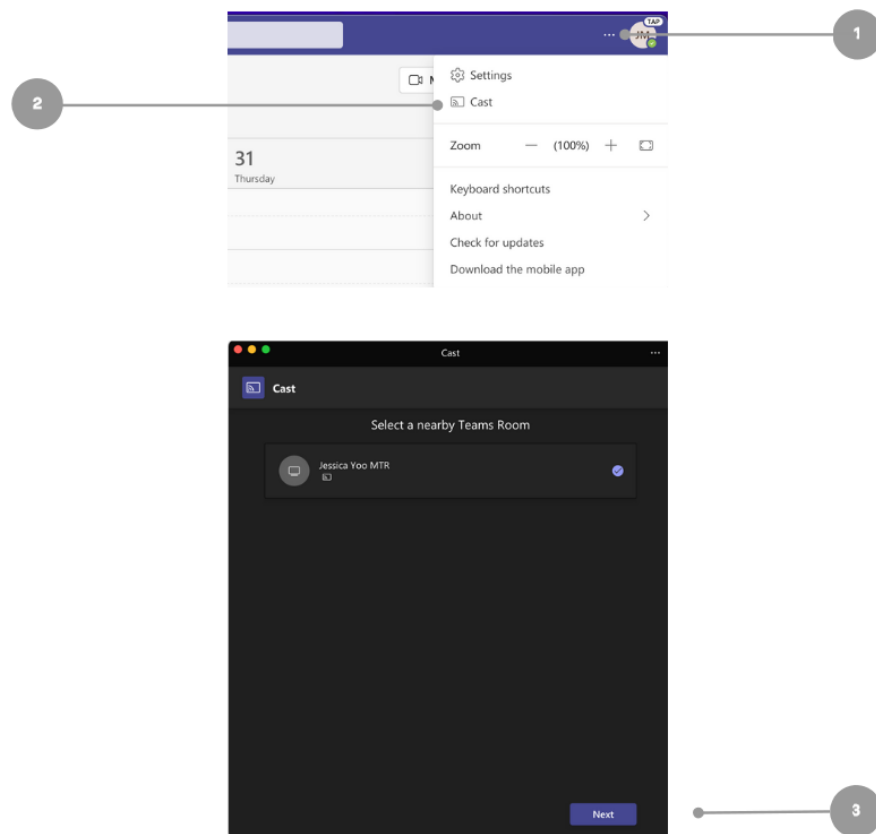
On Teams you can adjust camera settings and utilise Neat Symmetry while in a meeting.

- Swipe with one finger from the right side of the Pad towards the left.
- A slide out will appear with the auto-framing options.
- Choose between Individuals (Neat Symmetry),
- Group (cuts out dead-space around a group of people), Disabled (full-camera view).

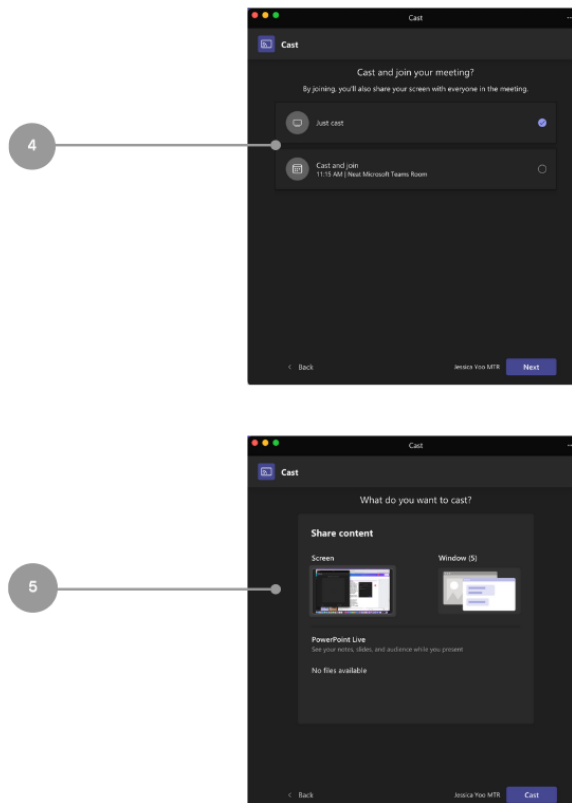


Share content via cast

1. In the Teams desktop app, click on the three dots.
2. When the dropdown menu appears, click on Cast.
3. When a nearby Teams Room has been detected, click Next. 3.
 - a. If using a MacBook, enable Location Services for Microsoft Teams in the Security & Privacy settings.



4. If there is an upcoming meeting, select either Just Cast or Cast and Join. Then, click Next.
5. If there are no upcoming meetings, select the content to be shared. Then, click Cast.



Share content via HDMI


1. Plug in your HDMI cable to your devices.
2. Click Share to screen share. During an ongoing meeting, just tap the Share button in the in-meeting controls.



Neat Pad

Neat Pad – console user guide for Microsoft Teams

Documents / Resources

<p>Neat Pad Console user guide For Microsoft Teams</p> 	<p>neat Neat Pad Software [pdf] User Guide DAFD0cGLa_E, BAE39rdniqU, Neat Pad Software, Pad Software, Software</p>
--	--

References

- [User Manual](#)

[Manuals+.](#) [Privacy Policy](#)

This website is an independent publication and is neither affiliated with nor endorsed by any of the trademark owners. The "Bluetooth®" word mark and logos are registered trademarks owned by Bluetooth SIG, Inc. The "Wi-Fi®" word mark and logos are registered trademarks owned by the Wi-Fi Alliance. Any use of these marks on this website does not imply any affiliation with or endorsement.