



## Bar and Neat Pad Zoom Rooms System User Manual

[Home](#) » [neat](#) » Bar and Neat Pad Zoom Rooms System User Manual 

# neat

**Neat Bar Pro & Neat Pad  
User Manual  
Video conferencing device**



Neat Bar Pro packs a stack of tech into a simple and elegant slimline device.

It's capable of driving three large screens, has two extreme resolution cameras, a multiple microphone array, and three full-range speakers.

Ideal for delivering superior-quality audio, video, and other unique capabilities to your huddle, focus, meeting, and conference rooms, Neat Bar Pro comes with a dedicated Neat Pad controller and integrated environmental sensors.

## Contents

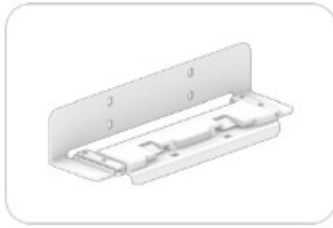
- [1 Simple setup](#)
- [2 Neat Bar Pro](#)
- [3 In the box](#)
- [4 Neat Pad](#)
- [5 In the box](#)
- [6 Mounting & releasing](#)
- [7 Size & weight](#)
- [8 Setup & connectivity](#)
- [9 Documents / Resources](#)
- [10 Related Posts](#)

## Simple setup

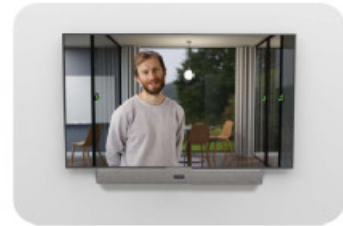
All you need is in the box, including mounts, cables, and clear instructions. So it's easy for anyone to install and set up. above or below one, two, or three screens.



## Wall mount



## Screen mount



## Table stand



## Neat Bar Pro



Neat Bar comes with everything you need to get started, including cables, wall mount, screen mount, and table stand.

## In the box

Neat Bar Pro: Video conferencing device

HDMI cable: 6.5ft (2m)

Ethernet cable: 9.8ft (3m)

Power cord: 9.8ft (3m) Mount adapter, wall mount, screen mount and table stand

4 x M8 screw (0.94 in / 24 mm) for VESA mount  
4 x M6 screw (0.94 in / 24 mm) for VESA mount  
2 x spacer (to secure parallel TV mount)

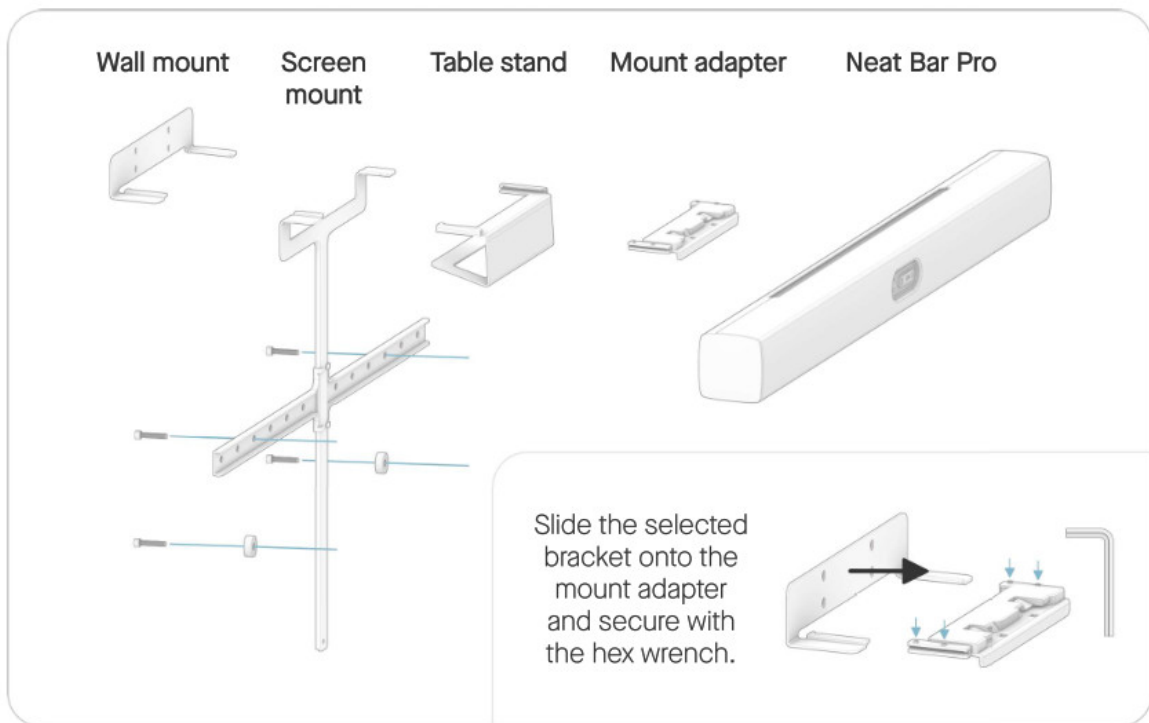
1 x 5 mm hex key for the screen mount

1 x 2 mm hex key for the mount adapter  
2 additional screws for dual or triple screen setup

4 x M8 screw (0.94 in / 24 mm) for VESA mount

2 x 4 x M6 screw (0.94 in / 24 mm) for VESA mount

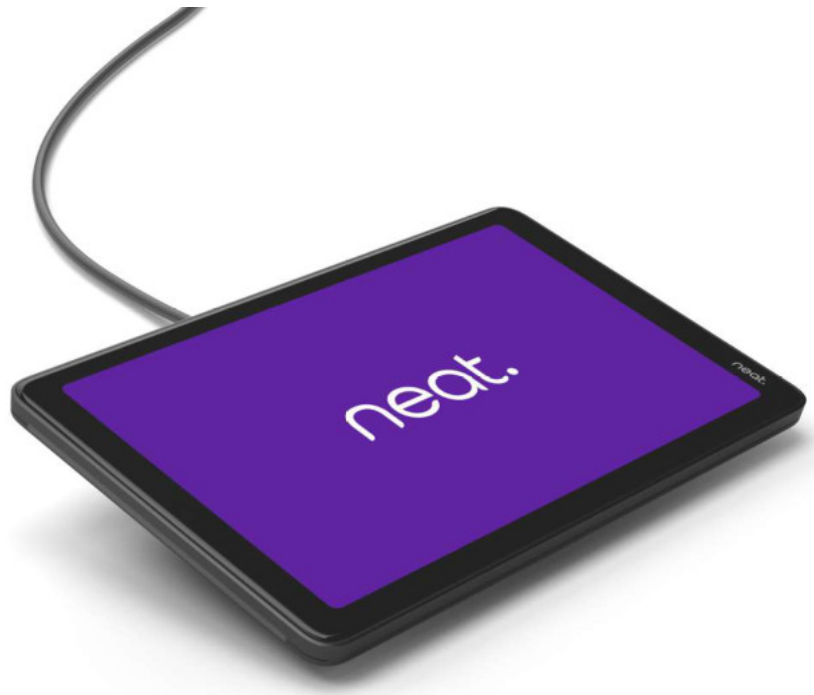
4 x spacer (to secure alignment of all screens)



Screws for mounting to the wall are not included. Mounting on a wall should only be performed by qualified personnel in line with applicable facility and state regulations. The wall and the mounting equipment must safely withstand the load of the product.

## Neat Pad

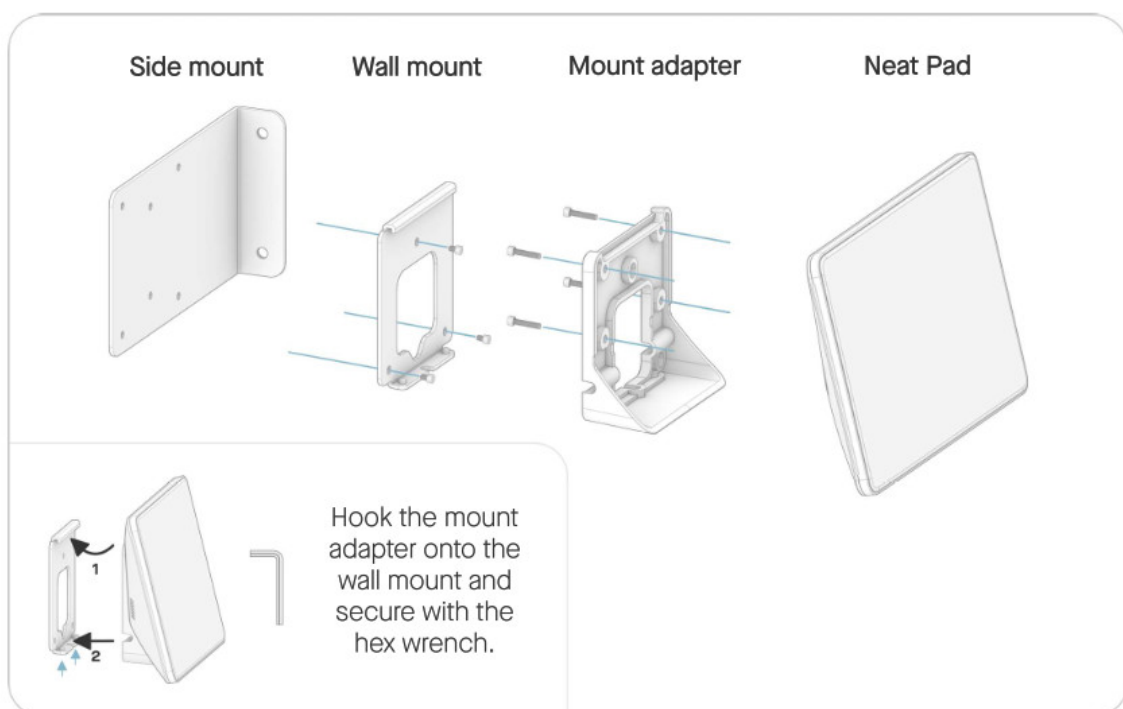
Neat Pad works as a Controller for Neat Bar and can also be configured as a Scheduling Display for the Meeting Room. It comes with everything you need to get started, including cables and mounting options.



## In the box

Neat Pad: 8-inch touch screen  
 2 x Ethernet cable: 9.8ft (3m) + 16.4ft (5m)  
 PoE power adapter  
 Mount adapter, side mount, and wall mount

4 x M4 screw (0.30 in / 7.5 mm) for the wall mount  
 3 x M4 screw (0.19 in / 4.7 mm) for the side mount  
 1 x 2.5 mm hex key for the adapters  
 1 x 2 mm hex key to secure Neat Pad to the wall mount



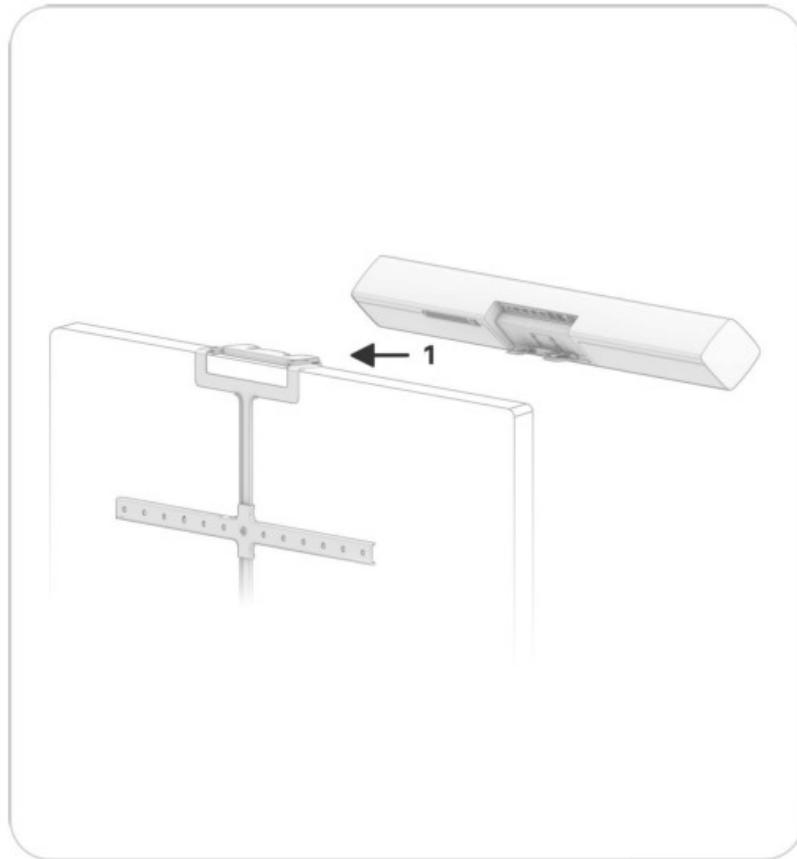


Screws for mounting to the wall are not included. Mounting on a wall should only be performed by qualified personnel in line with applicable facility and state regulations. The wall and the mounting equipment must safely withstand the load of the product.

## Mounting & releasing

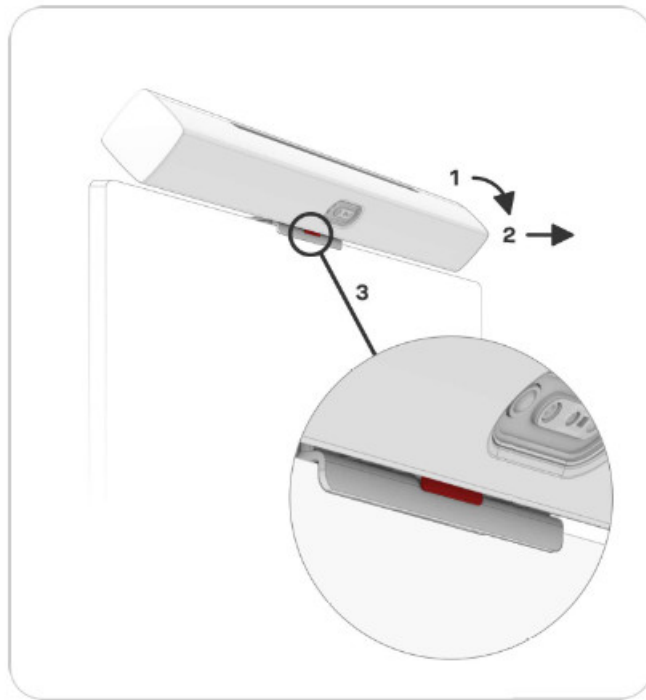
### Mounting

Slide Neat Bar onto the selected mounting option (1). When fully inserted tilt Neat Bar back to horizontal and check if it is secure by carefully pulling it towards you.



### Releasing

Tilt Neat Bar fully forward (1). Pull towards you (2) until the unit stops and the red release lever appears (3). Push the release lever up and pull Neat Bar gently off the mount adapter.



## Size & weight

### Neat Bar Pro

Width: 35.04 in (890 mm) Height: 3.15 in (80 mm)	Depth: 315 in (80 mm) Weight: 6.83 pounds (3.1 kg)
---	---



### Neat Pad

Width: 7.8 in (198 mm) Height: 1.7 in (42 mm)	Depth: 5 in (127 mm) Weight: 115 pounds (520 g)
--	--

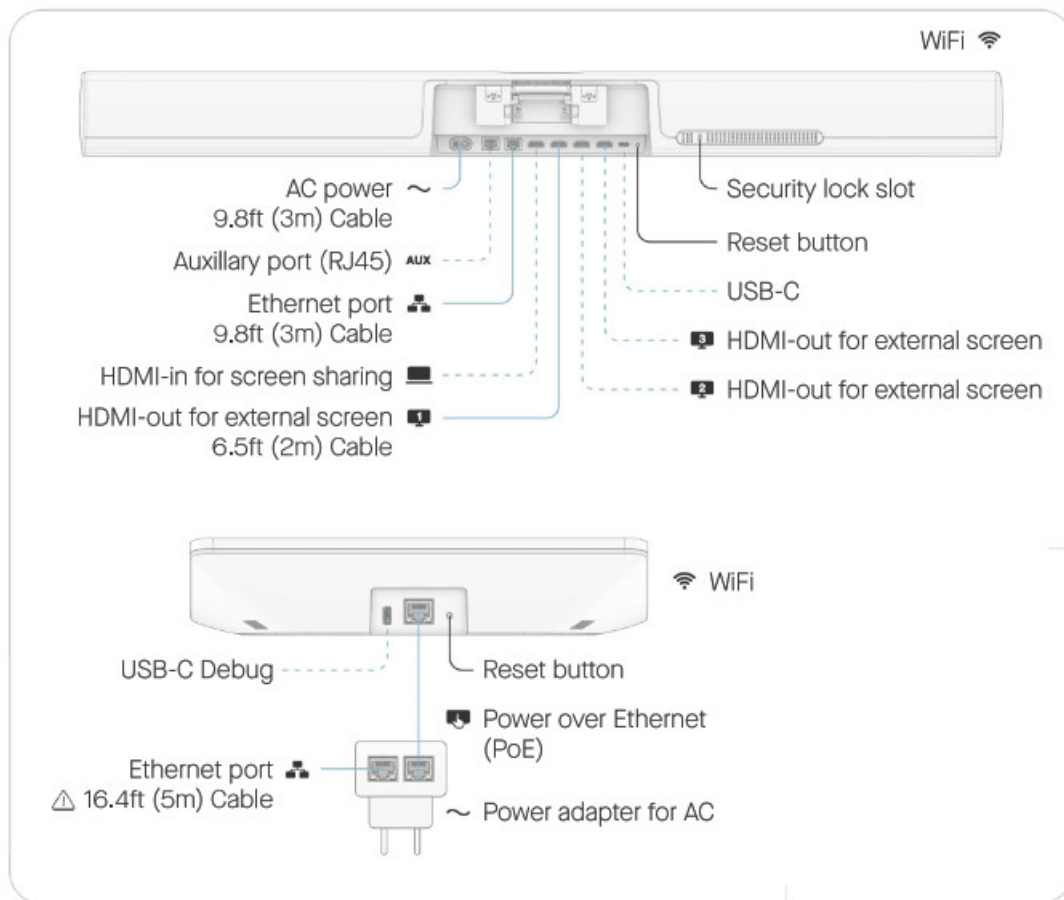
## Setup & connectivity

### Setup

Use the provided cables to set up Neat Bar. Connect the cables according to the illustration. Display Cables marked — are included. Cables marked Internet connection ••• are optional and not required for basic use Video service of the system.

Requirements for a complete setup

Display Internet connection Video service



The 16.41t (5m) Ethernet Cable provided is not to be used for InovSI installation. In-wall cable routing & noted oily be performed by qualified personnel using appropriate equipment.

### Environmental Requirements

Ambient operating temperature: 32° to 95° F (0° – 35° C)

Storage temperature: 5° – 149° F (-15° – 65° 0)

Relative humidity: 20% to 80%

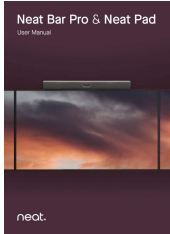
Network standby: <8W (after 20 minutes)

**Additional Product Information** <https://neat.no/bar-pro>

Neat Bar Pro and Neat Pad-User Manual rev02

### Documents / Resources





[neat Bar and Neat Pad Zoom Rooms System](#) [pdf] User Manual  
NFD1, 2AUS4-NFD1, 2AUS4NFD1, Bar and Neat Pad, Zoom Rooms System