



**Contents** [ [hide](#) ]

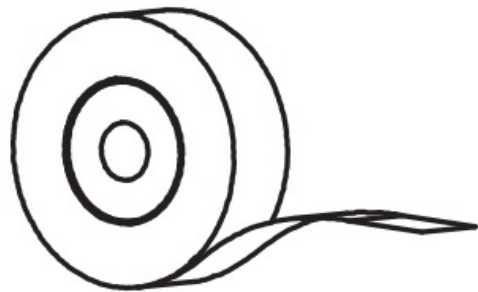
- [1 NDYIN N12 Label Maker Machine](#)
- [2 Package Contents](#)
- [3 Installation](#)
- [4 App Download](#)
- [5 Connecting and Printing](#)
- [6 Basic Functions](#)
- [7 Specifications](#)
- [8 Safety Precautions](#)
- [9 Related Statements](#)
- [10 FREQUENTLY ASKED QUESTIONS](#)
- [11 VIDEO – PRODUCT OVERVIEW](#)
- [12 References](#)



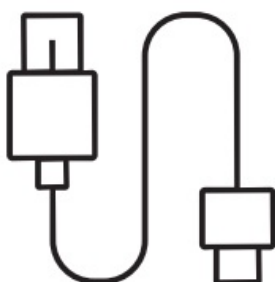
## **NDYIN N12 Label Maker Machine**



## Package Contents



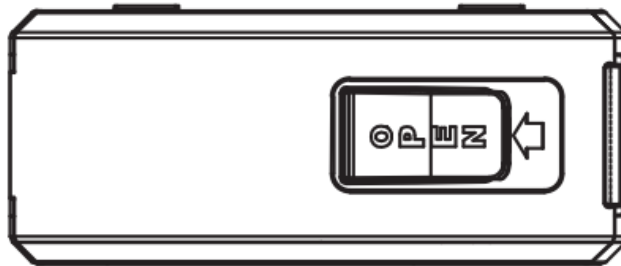
- Smart Label Printer \*1
- Label Paper Roll \*1



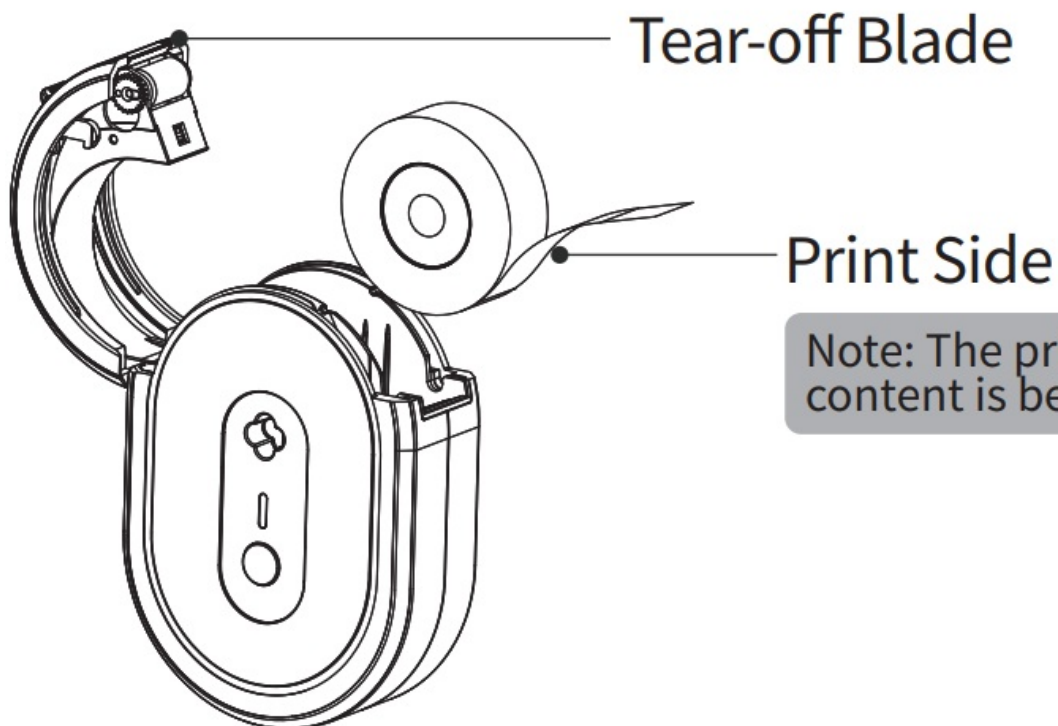
- USB Type-C Cable \*1
- Quick Start Guide \*1

## Installation

- Slide left to open the lid.



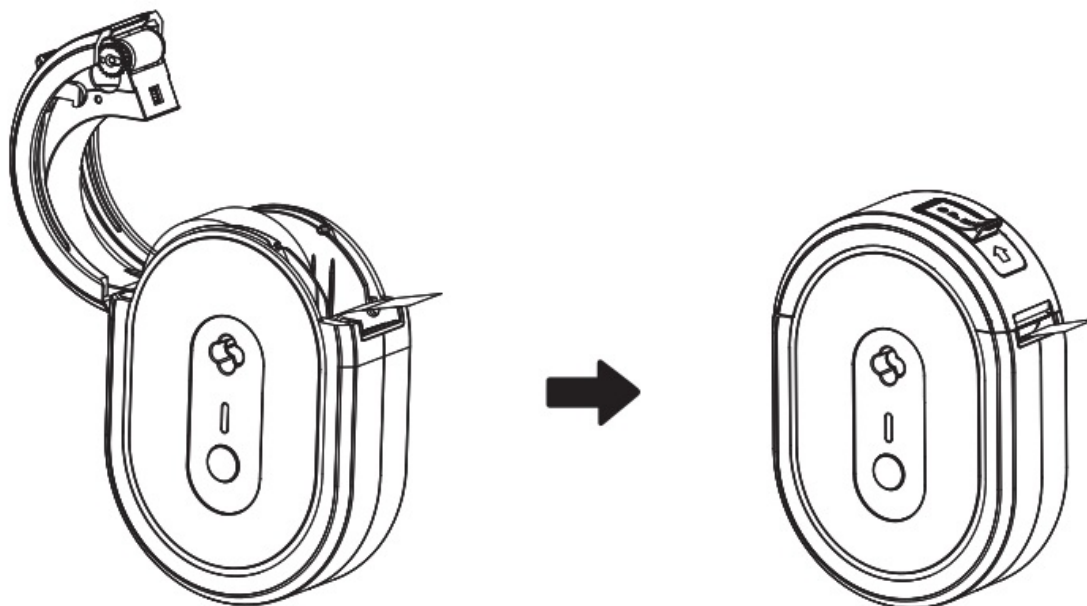
- Insert the print paper into the compartment with the printed side facing down, and ensure the first label paper extends out of the tear-off opening.



Note: The printed content is below the label

Danger! Beware of the sharp blade when the paper compartment is open.

- Cover the lid and prepare to print.



## App Download

- Before using the printer, please install the “Nada Print” app from Google Play or the App Store.

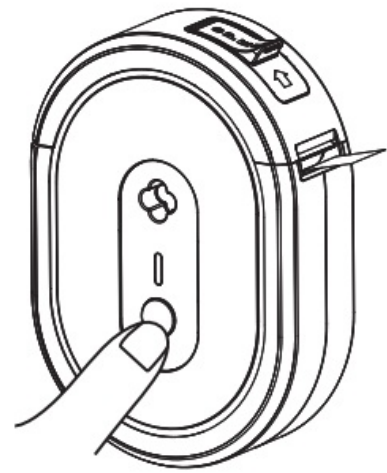
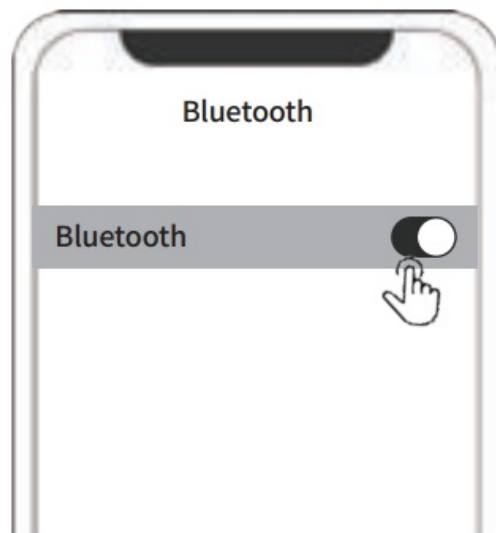


Nada Print

Scan the QR code to download and install the “Nada Print” App for printing.

## Connecting and Printing

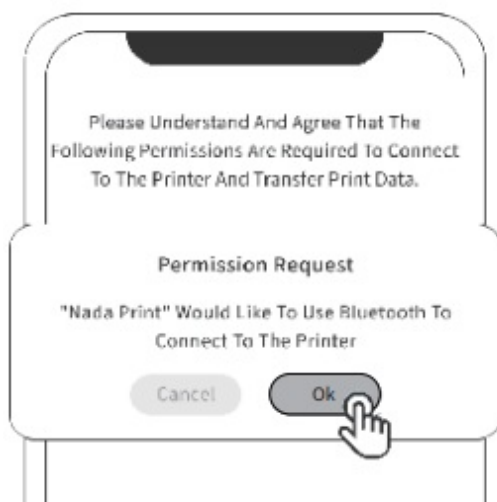
- Turn on bluetooth on your phone.
- Long-press the power button to start the machine.
-



- Open the “Nada Print” app.
- Tap [Start Connecting].



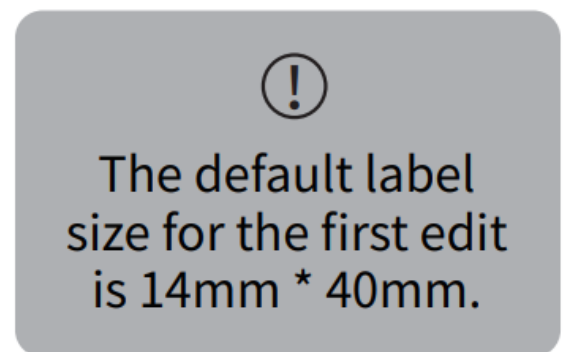
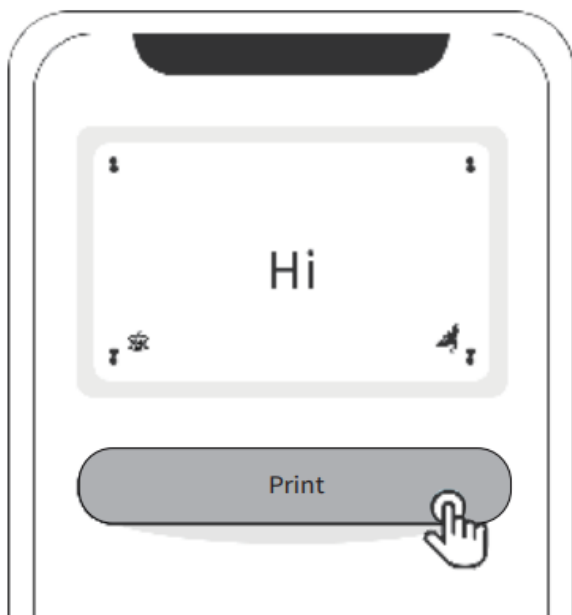
- Grant permissions.
- Waiting for the printer to be connected.



- In the searched printer list, click N12 to connect.
- Connected.



- Edit your first label, and tap [Print] after you finish editing.



- Print Successfully.



## Basic Functions

Function	Operation
Switch on	Hold down the Power button for 3 seconds.
Switch off	Howledndtohowe ndethviecePoiswoenr.button for 3 seconds
Print	Pwrheesns the Pdoewwiecer bisuottno.n once
Print a test page	Dwohuebnlteh-perdeessvitcheeisPonw.er button

## Specifications

Product	Label Printer	Model	N12
Dimensions	109 x 77 x32mm	Weight	135g
Charging Time	2-3 hours	Input	5V DC, 2A
Battery Capacity	1200mAh	Printing Method	Thermal printing
RePsroinlutitniogn	203dpi	Printing Width	12mm
Connectivity	Bluetooth	Charge	Type-C

Transmit Power	4dBm(Maximum)	TeOmppereartaitnugre	0°C-45°C
----------------	---------------	----------------------	----------

## Safety Precautions

Please read all the instructions and warnings in this manual carefully before using this product to ensure the proper functioning of the device and your safety.

## Warnings



- Don't disassemble the product without authorisation; Disassembled products can not be returned or exchanged.
  - Do not wipe the product with corrosive chemicals or cleaning agents.
  - Do not use the product near places with flammable products such as gas stations or fuel depots.
1. Please keep the product and accessories out of the reach of children, or they must be used under the supervision and guidance of a guardian
  2. Turn off the power immediately when water gets into the product
  3. Turn off the power immediately in case of any product malfunction.
  4. If you want to use a power adapter, always use one that is safe,regulatory-compliant, and compatible
  5. Do not disassemble the product to replace the battery. Improper operation may cause an explosion
  6. The battery contains a special protection circuit and device. Please do not disassemble the battery without authorisation, otherwise it may cause a short circuit or leakage. If electrolyte gets into your eyes, flush with water immediately and seek medical help.



7. Do not expose the product and the power adapter to high temperatures or high humidity. Do not put them in water; otherwise, a short circuit may occur, and the battery may heat up, smoke, deform, damage, or even explode. If smoke or smell comes from the product or the power adapter, please unplug the power adapter immediately and avoid any burns.

## **Related Statements**

### **FCC Statement**

This device complies with part 15 of the FCC Rules. Operation is subject to the following two conditions: (1) this device may not cause harmful interference, and (2) this device must accept any interference received, including interference that may cause undesired operation. Any Changes or modifications not expressly approved by the party responsible for compliance could void the user's authority to operate the equipment.

### **NOTE:**

This equipment has been tested and found to comply with the limits for a Class B digital device, pursuant to Part 15 of the FCC Rules. These limits are designed to provide reasonable protection against harmful interference in a residential installation. This equipment generates, uses and can radiate radio frequency energy and, if not installed and used in accordance with the instructions, may cause harmful interference to radio communications. However, there is no guarantee that interference will not occur in a particular installation. If this equipment does cause harmful interference to radio or television reception, which can be determined by turning the equipment off and on, the user is encouraged to try to correct the interference by one or more of the following measures:

- Reorient or relocate the receiving antenna.
- Increase the separation between the equipment and receiver.
- Connect the equipment into an outlet on a circuit different from that to which the receiver is connected.
- Consult the dealer or an experienced radio/TV technician for help.

The device has been evaluated to meet the general RF exposure requirements. The device can be used in portable exposure conditions without restriction.

**Notice:**

If the device cannot be turned on, please charge it for one hour. Zhuhai Jiuyin Technology Co., Ltd

- **Support Email:** [admin@zhuhaijiuyin.com](mailto:admin@zhuhaijiuyin.com)  
**Official Website:** [www.ndyin.com](http://www.ndyin.com)

**Address :**

- Room 302, Building 2, No.90 Chuangzhi Road, Tangjiawan Town, High-tech Zone, Zhuhai

## **FREQUENTLY ASKED QUESTIONS**

What is the NDYIN N12 Label Maker Machine?

The NDYIN N12 Label Maker Machine is a portable Bluetooth thermal label printer designed for home, office, school, and kitchen organization, offering clear, inkless, and fast printing.

What printing technology does the NDYIN N12 Label Maker Machine use?

The NDYIN N12 Label Maker Machine uses direct thermal printing technology, producing black text without the need for ink, toner, or ribbons.

Which devices are compatible with the NDYIN N12 Label Maker Machine?

The NDYIN N12 connects via Bluetooth and is compatible with both iOS and Android devices, using the free Nada Print app for design and printing.

How many label templates are available on the NDYIN N12 Label Maker Machine?

The NDYIN N12 Label Maker Machine offers over 1,000 symbols, 270 frames, and 100 fonts through the Nada Print app, allowing for extensive customization.

What is the maximum print speed of the NDYIN N12 Label Maker Machine?

The NDYIN N12 Label Maker Machine prints at a speed of up to 60 ppm, enabling quick creation of labels and stickers.

How do I connect my NDYIN N12 Label Maker Machine to my smartphone?

Turn on the NDYIN N12, enable Bluetooth on your phone, open the Nada Print app, and follow the in-app instructions to pair the printer.

Why is my NDYIN N12 Label Maker Machine printing faint or incomplete labels?

Ensure the label tape is loaded correctly, the print head is clean, and the NDYIN N12 battery is fully charged to maintain clear printing quality.

## **VIDEO – PRODUCT OVERVIEW**

<https://manuals.plus/wp-content/uploads/2025/09/NDYIN-N12-Label-Maker-Machine-User-Guide.mp4>

**DOWNLOAD THE PDF LINK:** [NDYIN N12 Label Maker Machine User Guide](#)

## **References**

- [User Manual](#)

---

## Leave a comment

Your email address will not be published. Required fields are marked \*

Comment \*

Name

Email

Website

☐ Save my name, email, and website in this browser for the next time I comment.

**Post Comment**

**Search:**

e.g. whirlpool wrf535swhz

**Search**

[Manuals+](#) | [Upload](#) | [Deep Search](#) | [Privacy Policy](#) | [@manuals.plus](#) | [YouTube](#)

This website is an independent publication and is neither affiliated with nor endorsed by any of the trademark owners. The "Bluetooth®" word mark and logos are registered trademarks owned by Bluetooth SIG, Inc. The "Wi-Fi®" word mark and logos are registered trademarks owned by the Wi-Fi Alliance. Any use of these marks on this website does not imply any affiliation with or endorsement.