

NBN Modem Router Router or Mesh System



NBN Modem Router Router or Mesh System User Guide

[Home](#) » [NBN](#) » NBN Modem Router Router or Mesh System User Guide 

Contents

- [1 NBN Modem Router Router or Mesh System](#)
- [2 Product Information](#)
- [3 Product Usage Instructions](#)
- [4 NBN Connections](#)
- [5 Non-NBN Connections](#)
- [6 Documents / Resources](#)
 - [6.1 References](#)
- [7 Related Posts](#)



NBN Modem Router Router or Mesh System



Product Information

Specifications:

- NBN Connection Types:

- Fibre to the Premises (FTTP)
- Fibre to the Node (FTTN)
- Fibre to the Curb (FTTC)
- Fibre to the Building (FTTB)
- Fixed Wireless
- Satellite (Sky Muster)
- **Connection Devices Required:**
 - Router or Mesh System
 - Modem Router

Product Usage Instructions

NBN Connections:

For NBN connections, different types are available based on your location:

- **Fibre to the Premises (FTTP):** Connects directly to the nearest NBN node via fibre optic cable.
- **Fibre to the Node (FTTN):** Uses existing copper wiring to connect to an NBN node.
- **Fibre to the Curb (FTTC):** Runs fibre optic cable to a distribution point outside your home.
- **Fibre to the Building (FTTB):** Used in apartment blocks connecting each unit to a central node.
- **Fixed Wireless:** Used in regional areas, broadcasting a connection to an antenna at your home.
- **Satellite (Sky Muster):** Beam signal from a satellite dish in regional areas.

Connection Devices Setup:

Follow these steps to set up your connection devices:

1. Install the NBN modem box inside your home.
2. Connect the router or mesh system to the modem.
3. For Modem Router, connect it through a phone line.

Non-NBN Connections:

Alternative non-NBN connections are also available:

- **Mobile Internet (4G/5G):** Wireless connection option.
- **Hotspot Devices:** Requires a WAN port for router or mesh system connection.
- **ADSL:** Slower technology over existing copper lines.

Check Your Connection Type:

To determine your NBN connection type, visit nbnco.com.au/check and input your address.

FAQs

- **Q: How do I know which NBN connection type I have?**

A: Visit nbnco.com.au/check and enter your address to find out your NBN connection type.

- **Q: Do I need a specific device for non-NBN connections?**

A: For non-NBN connections like Mobile Internet or ADSL, you may need a compatible router or modem

depending on the type of connection.

Network Connection Type Guide



NBN Connections

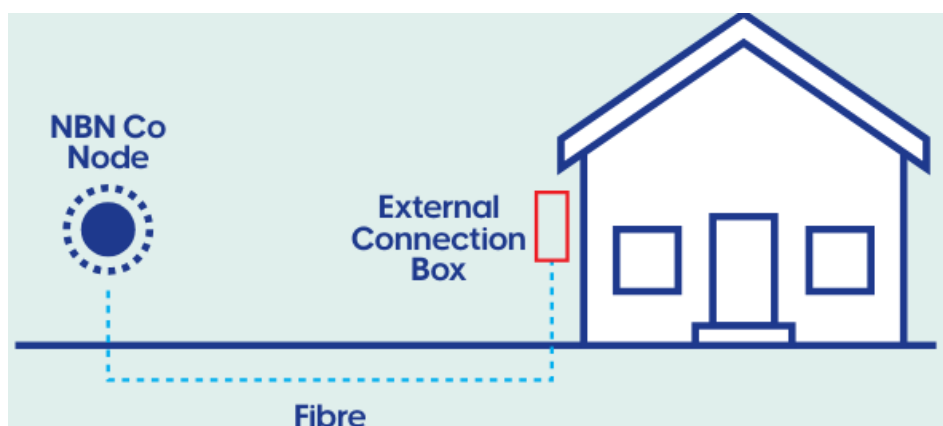
Connection Type Device Required

- Fibre to the Premises (FTTP)

The fastest connection type available, FTTP connects your home directly to the nearest NBN node via fibre optic cable.

- Router or Mesh System

The NBN modem box is installed inside the home. Connect the router and mesh to the modem.

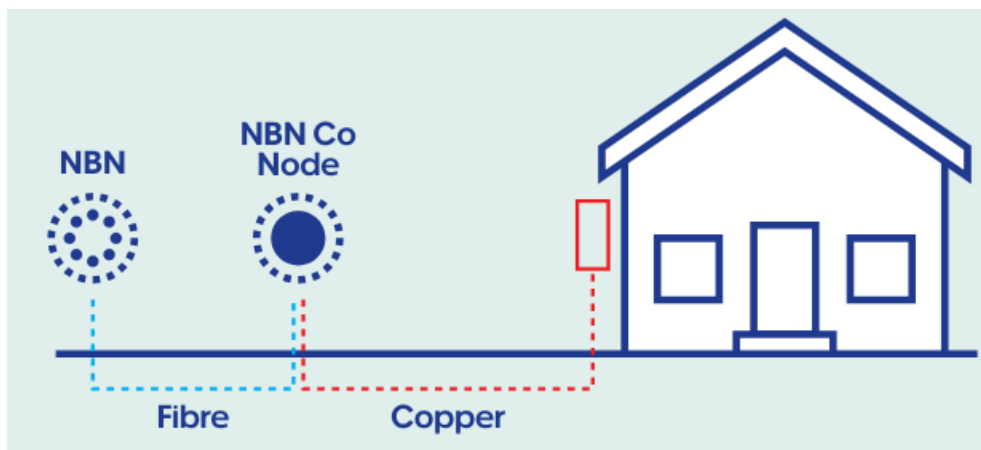


- Fibre to the Node (FTTN)

An FTTN connection uses your home's existing copper wiring to connect to an NBN node in your area.

- Modem Router

The modem connects to the home through a phone line

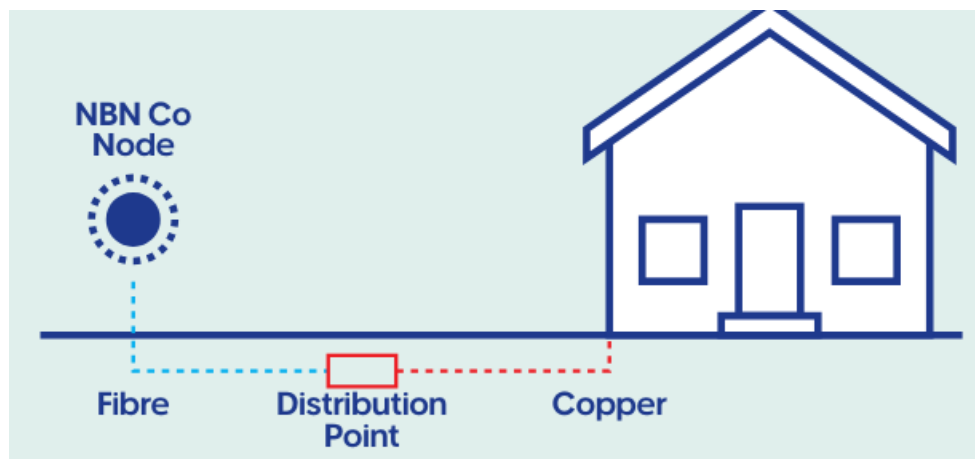


- Fibre to the Curb (FTTC)

FTTC is similar to FTTN but runs fibre optic cable to a distribution point outside your home, which is then connected to your house via copper wiring.

- Router or Mesh System

The NBN modem box is installed inside the home. Connect the router and mesh to the modem.

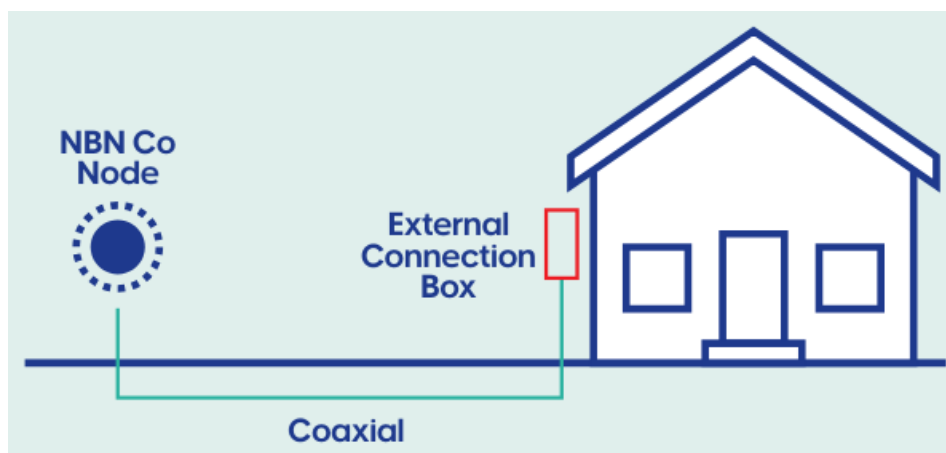


- Hybrid Fibre Coaxial (HCF)

HFC uses existing cable networks – the same used to deliver pay TV – to connect your home to the closest NBN node.

- Router or Mesh System

The NBN modem box is installed inside the home. Connect the router and mesh to the modem.

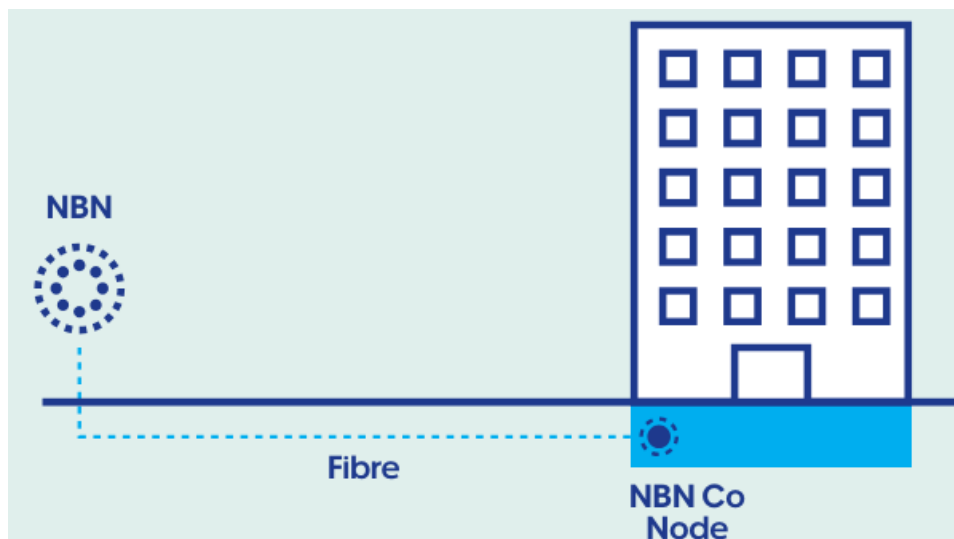


- Fibre to the Building (FTTB)

FTTB is predominantly used in apartment blocks, where copper wiring connects each apartment to a central node in the basement of the building.

- Modem Router

The modem connects to the apartment through a phone line.



- Fixed Wireless

Fixed wireless is primarily used in regional areas. It uses transmission towers to broadcast a broadband connection to an antenna installed in your home.

- Router or Mesh System

The NBN modem box is installed inside the home. Connect the router and mesh to the modem.

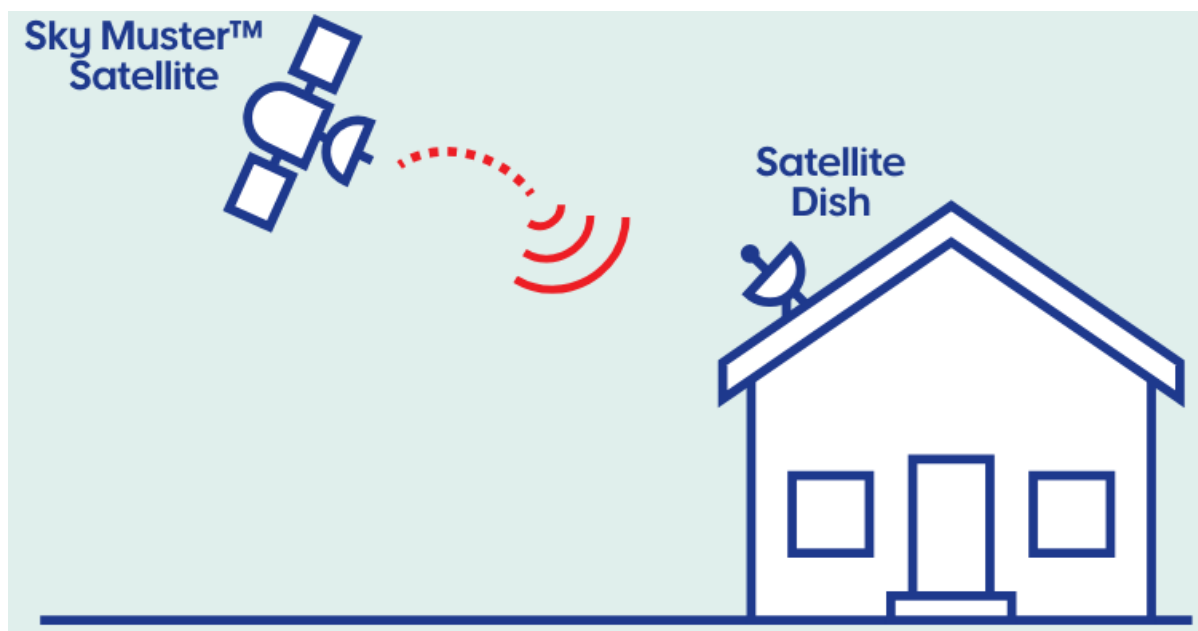


- Fixed Wireless

Fixed wireless is primarily used in regional areas. It uses transmission towers to broadcast a broadband connection to an antenna installed in your home.

- Router or Mesh System

The NBN modem box is installed inside the home. Connect the router and mesh to the modem.



- Satellite (Sky Muster)

Satellite NBN is used in regional areas and beams an NBN network signal from the Sky Muster satellite to a dish installed in your home.

- Router or Mesh System

The NBN modem box is installed inside the home. Connect the router and mesh to the modem.

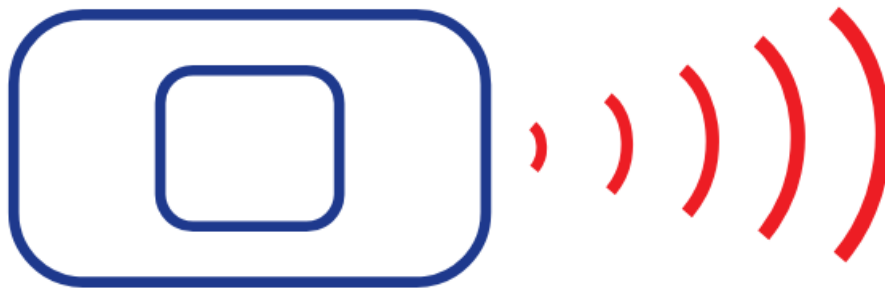
Non-NBN Connections

- Mobile Internet (4G/5G)

Mobile internet provides an alternative to a wired connection.

- Hotspot Devices

The hotspot needs a WAN port, then connect the router or mesh system.

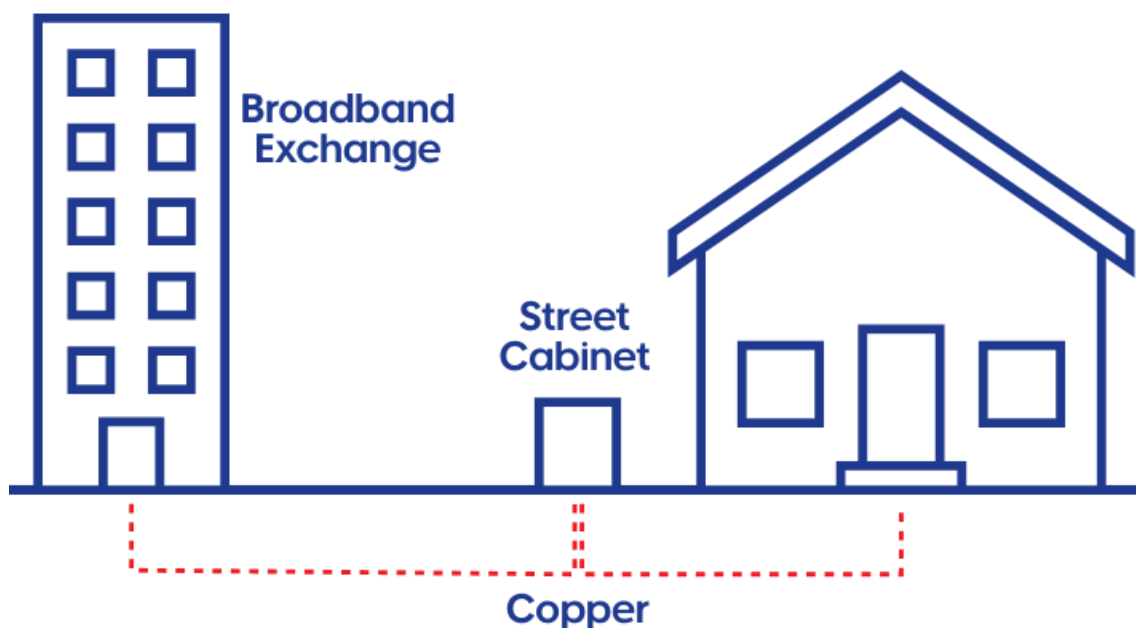


- ADSL

ADSL is a technology that allows download and upload over existing copper phone lines. This technology is considerably slower than cable or fibre broadband.

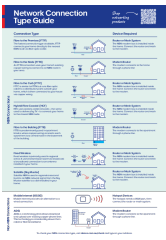
- Modem Router

The modem connects to the apartment through a phone line.



To check your NBN connection type, visit nbnco.com.au/check and type in your address.

Documents / Resources



[NBN NBN Modem Router Router or Mesh System](#) [pdf] User Guide
NBN Modem Router Router or Mesh System, Modem Router Router or Mesh System, Router R
outer or Mesh System, Router or Mesh System, Mesh System

References

- [User Manual](#)

Manuals+, Privacy Policy

This website is an independent publication and is neither affiliated with nor endorsed by any of the trademark owners. The "Bluetooth®" word mark and logos are registered trademarks owned by Bluetooth SIG, Inc. The "Wi-Fi®" word mark and logos are registered trademarks owned by the Wi-Fi Alliance. Any use of these marks on this website does not imply any affiliation with or endorsement.