



naxa NLT-1400 14.1 Inch Notebook Computer Instruction Manual

[Home](#) » [NAXA](#) » naxa NLT-1400 14.1 Inch Notebook Computer Instruction Manual 



NLT-1400 14.1 Inch Notebook Computer Instruction Manual



Contents

- 1 Introduction
- 2 In the Box
- 3 IMPORTANT SAFETY INSTRUCTIONS
- 4 Product Overview
- 5 Startup Menu
- 6 Product Features
- 7 Troubleshooting
- 8 Specifications
- 9 Documents / Resources
 - 9.1 References
- 10 Related Posts

Introduction

Thank You

We know that you have many choices when it comes to technology; thank you for choosing us here at Naxa Electronics. Established in 2001 in Los Angeles, California, we are dedicated to delivering products that entertain and delight.

We trust that you will be happy with your purchase. Please read this manual carefully and save it for future reference. You may also find the latest FAQ documentation and other product material at our website. Come visit us on the web at www.naxa.com and see all that we have to offer!

In the Box

Please take a moment to make sure that you have everything in the list below. Although we make every effort to ensure that each Naxa device is securely packaged and sealed, we know a lot can happen in between us and you. If anything is missing, check back with your local retailer to get immediate assistance. If they cannot help you, please contact our Naxa Support team at www.naxa.com/naxa_support.

- NLT-1400
- Power Adapter
- Instruction Manual
- Warranty Card

Tips

If this device heats up due to continuous usage, turn off the screen and let the device cool down in a dry environment.

If any charging issues occur, such as the device not fully charging or shutting off with over 5% battery, you may need to reset the battery level indicator. To do so, plug in the device using the power adaptor. Then, press and hold the POWER button until the laptop turns off. Continue to hold the POWER button until the battery icon reappears. Finally, release the POWER button and press it again to restart the device normally.

WARNING

To prevent fire and/or electric shock, do not use this plug with an extension cord, receptacle, or another outlet unless the blades can be fully inserted to prevent bald exposure. Do not expose this appliance to rain or moisture.

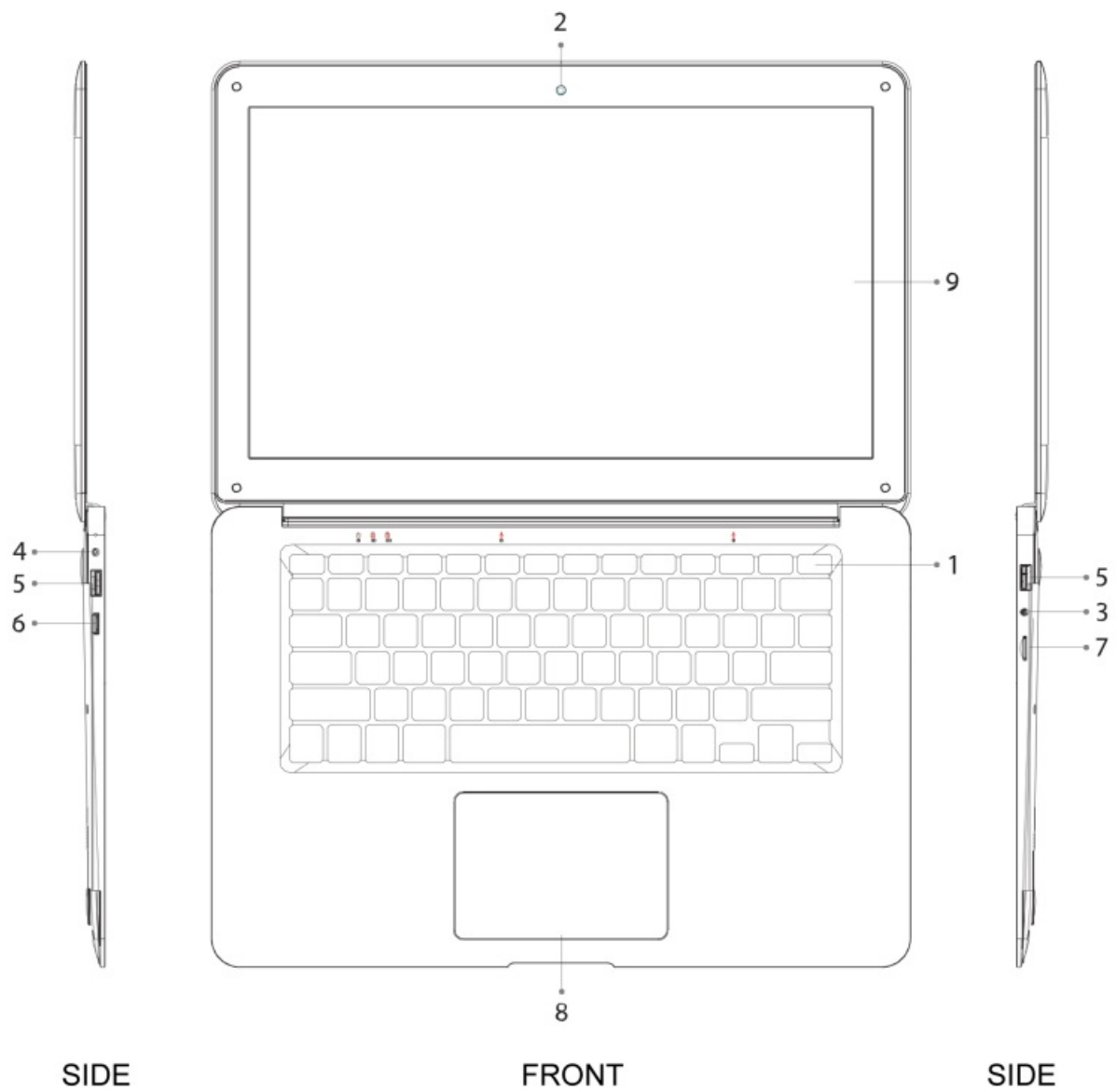


IMPORTANT SAFETY INSTRUCTIONS

- Read these instructions.

- Keep these instructions.
- Heed all warnings.
- Follow all instructions.
- Please, unplug the power adaptor when the following conditions occur:
 - When there is a thunderstorm.
 - When cleaning the laptop.
 - When the device is not used for a long time.
- Do not use corrosive depurative when cleaning the device.
- Do not put the device under direct sunlight or near heat.
- Do not put a heat source, such as a candle or heater, on top of or near the device.
- Place the device away from where it can be ruined by rain or water (such as near a window).
- Do not put a container with liquid (such as a vase) on top of the device.
- Do not touch, push, or scratch the surface of the device with hard materials or items.
- When the device screen is dirty, please use a wet cotton cloth or soft cloth with non-corrosive cleaners to clean it carefully.
- Do not use acetone, toluene, or alcohol to clean the device.
- Be aware and careful of moisture, which can damage inner electronic components.
- When condensed moisture is present, the device screen may appear blurry or spotty.
- Do not hit the device with hard objects to prevent damage.
- Loud volumes may cause hearing damage.
- Do not cover the device with blankets or other objects when it is connected to a power source to prevent overheating and fire.
- Batteries shall not be exposed to excessive heat, such as sunshine, fire, or the like.

Product Overview



1. Power Button
2. Front Camera
3. Headphone Output
4. DC Power Input
5. USB Port
6. HDMI Output
7. Memory Card Slot
8. TouchPad
9. Display Screen

Startup Menu



(Windows 10 Start Up Menu)

The Start menu for Naxa's notebook appears as shown above. The scrolling menu appears as a single column with jump lists and fly-out menus for extra options. The layout is divided into frequently used and recently installed programs, and on the side is a full scrolling list of all installed applications listed in alphabetical order. Thanks to Windows 10, you can personalize this space for easy access to all of your favorite apps, programs, people, and websites.

To access the Start Menu, select the Windows icon in the lower left-hand corner of the device screen, or by pressing the Windows key on your laptop's keyboard.

Product Features

Account

To edit your account information, click on your account name at the top of the Start Menu (shown below). From here, you can change your account picture, lock your device, or sign out of your account.



Power Button

Press the Power button icon (shown below). Once pressed, you will be presented the options to put the device to sleep, shut down the device, or restart the device.



Applications

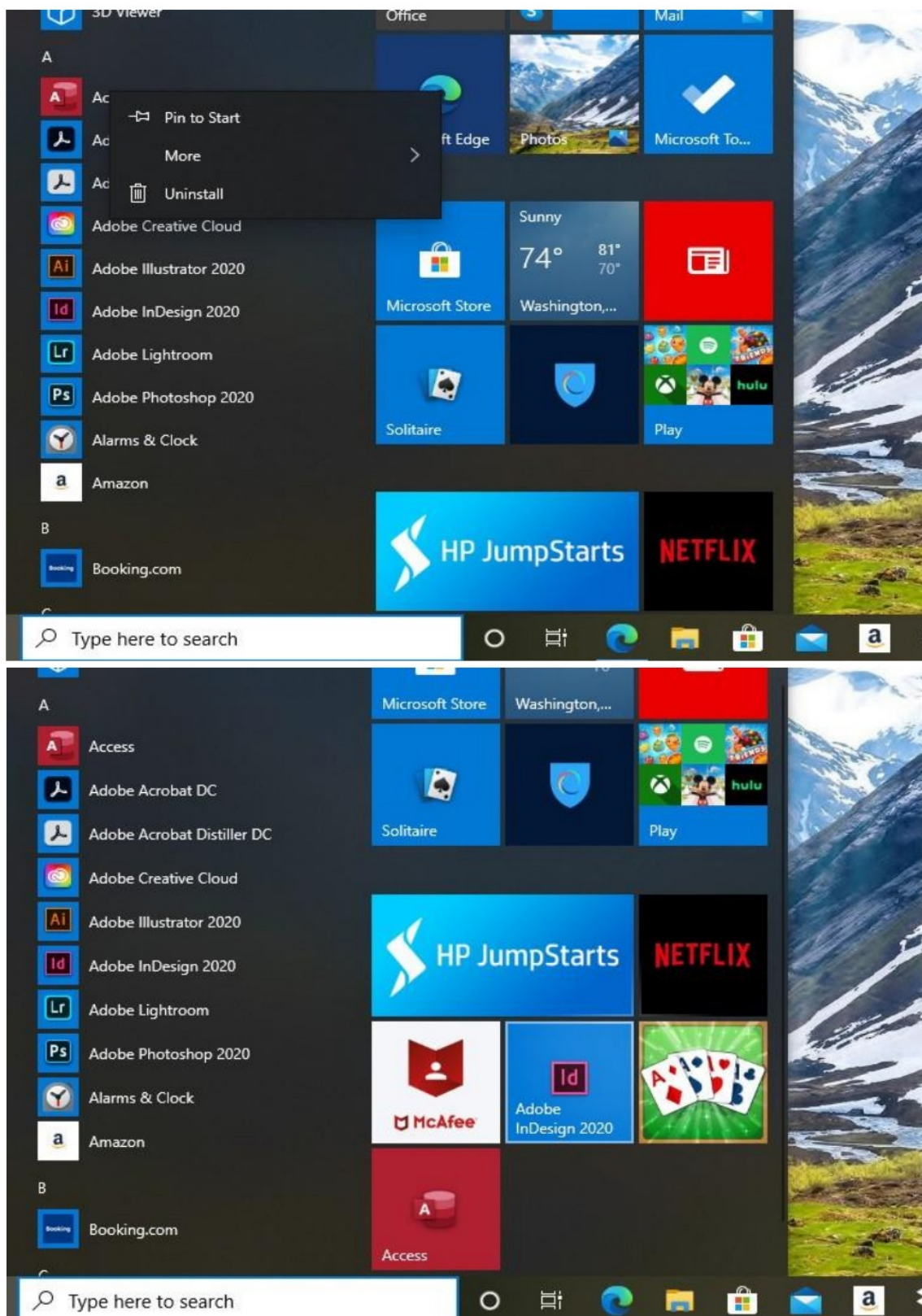
Click the "All Apps" button to display all of your device's applications and installed programs listed in alphabetic order.

Search Function

If you're looking for a specific application, utilize the search function. Type the desired app into the search bar and results will show from your device, cloud storage on OneDrive, and across the Web. The search function can be used from either the Start Menu or directly from the taskbar at the bottom of your screen.

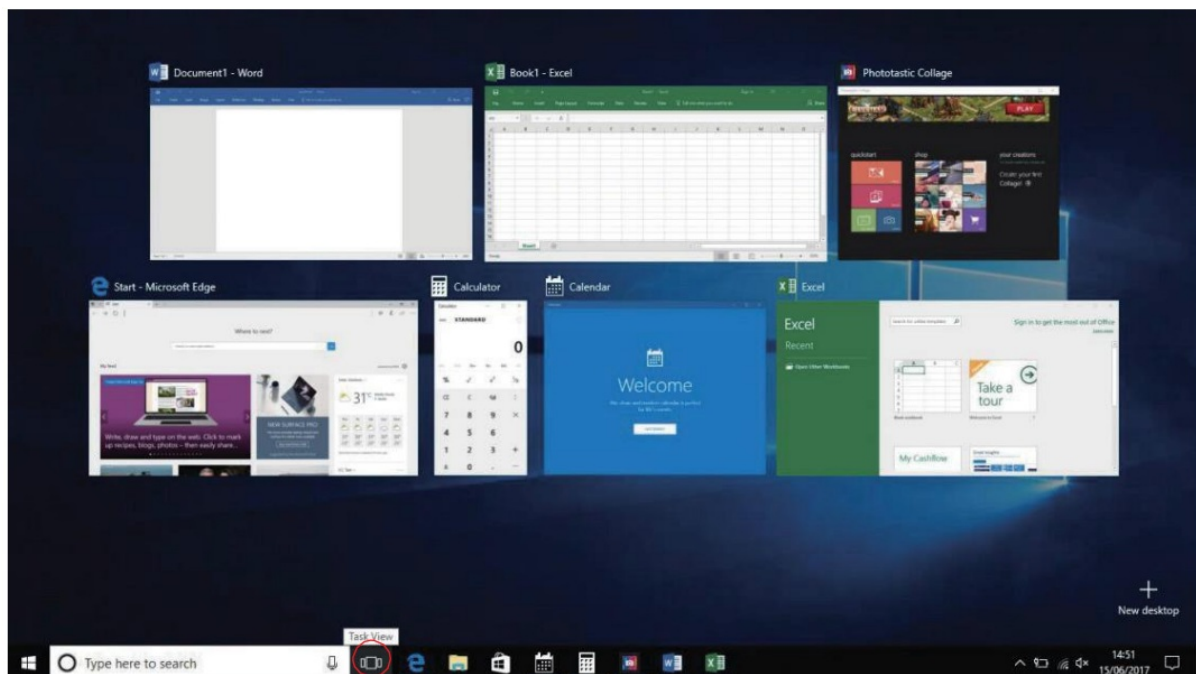
Pinning Apps

For easy access to all of your favorite or frequently used applications, programs, and folder, pin them directly to the Start Menu. To do so, open the Start Menu. Next, find the application that you wish to pin. Then, right-click on the desired application and select "Pin to Start". Once you have successfully pinned an application to the Start Menu, your app will appear as an expanded tile (shown below). Right-click on the app tile to change its size as desired or drag and drop to reorder on the screen.



Task View

Easily switch between open applications and programs with the new Task View button. Task View is located next to the search bar on the taskbar at the bottom of your screen (shown below). Clicking the Task View icon will allow you to see and select all of your currently running programs.



Task View Icon

Multiple Desktops

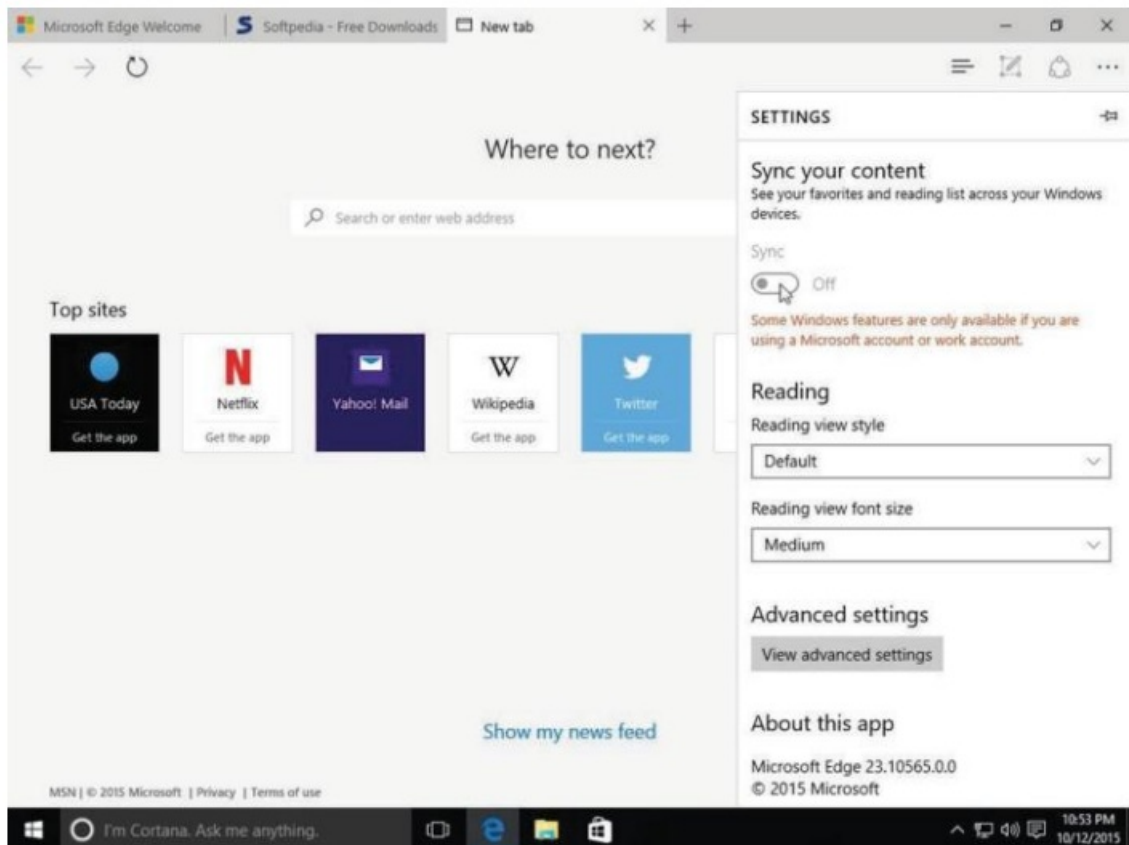
If you're working on multiple projects using different apps and programs, add another desktop to help keep things organized. To do so, click the Task View icon. At the top of the exploded screen, showing all the currently running apps and programs, select "New Desktop" and a thumbnail will appear at the bottom of the page. Click the thumbnail to open a new blank desktop. Utilize the Task View screen to switch back and forth between desktops with ease.

Split Screens

Because all of your apps and programs run in Windows on the desktop, you cannot drag across the left edge of the screen to bring another app on screen and get a split view. Instead, you must drag windows into the corners of the screen to achieve a split-screen view.

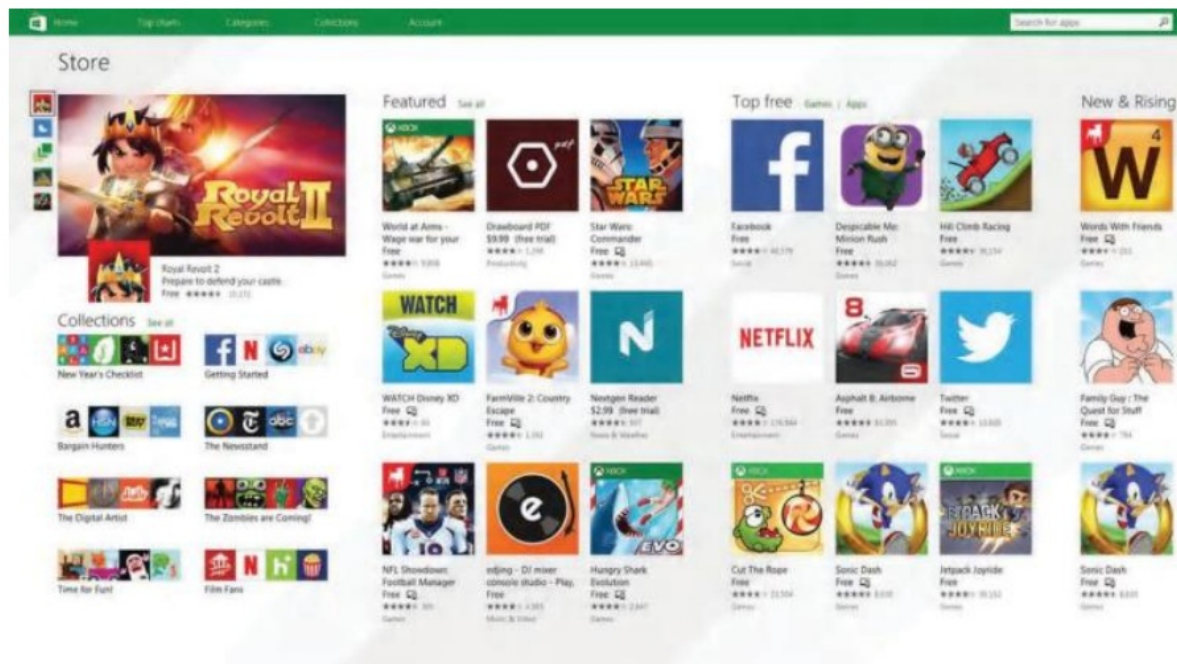
Internet Browser

This device comes with the Edge browser pre-installed. Edge works seamlessly from your taskbar, allowing you to search the web, offer search suggestions, show your browsing history, and provide instant results.



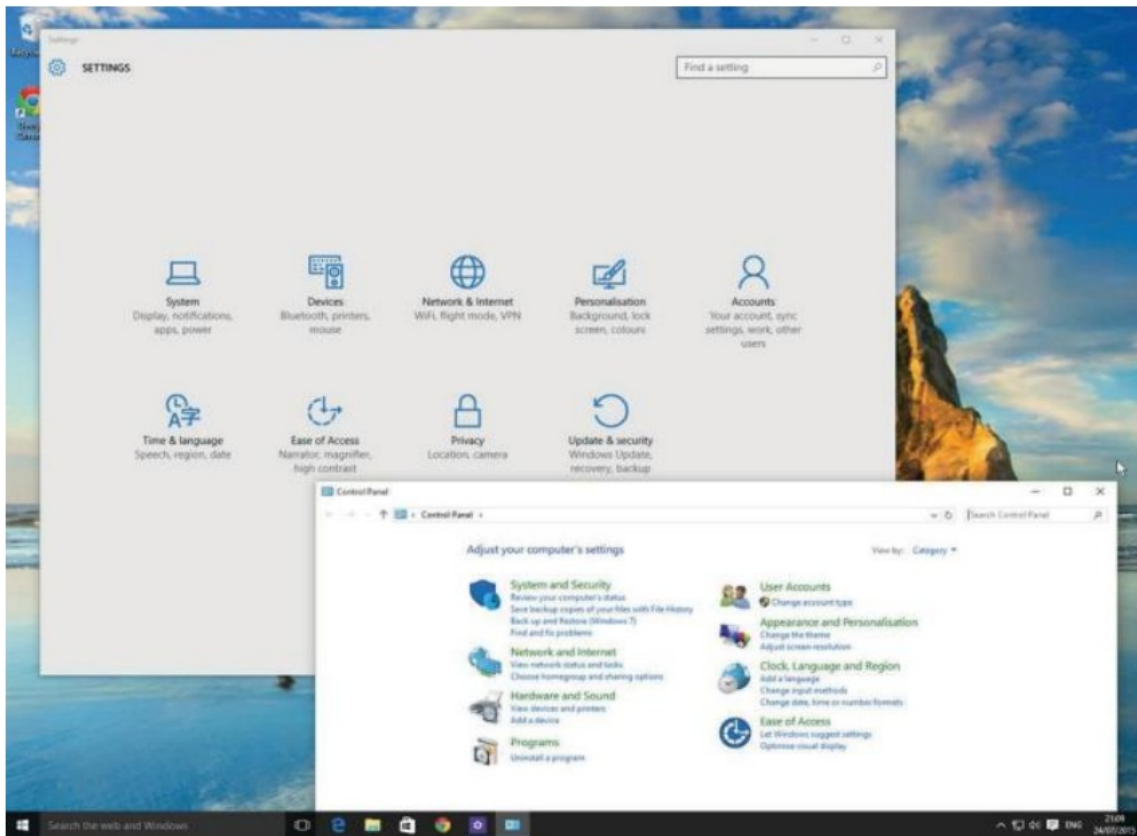
Windows App Store

Windows 10 offers a new App store (shown below) that allows you to download desktop programs, as well as Windows apps.



Settings and Control Panel

Windows 10 settings interface has icons to easily navigate with (shown below). If the Windows 10 settings menu doesn't have all of the controls you are looking for, simply bring up the control panel (shown below) for even more options.



Troubleshooting

PROBLEM	SOLUTION
The device will not turn on	<ol style="list-style-type: none"> 1. Check the battery power. 2. Connect adaptor, check again. 3. Contact the service center if the laptop does not turn on after ch
The device will not operate	<ol style="list-style-type: none"> 1. Access task manager to close out problem applications. 2. Restart the device. 3. Contact service center.

Task Manager

To access the Task Manager, press Ctrl + Alt + Del. From here, you can lock, sign out, or change the password of your account, as well as select and closeout currently running programs by clicking “End Task”.

Factory Reset

WARNING: After doing a factory reset to reset your device to the default settings, the system will delete all Google accounts, data, and settings from your device. Doing a factory reset will also wipe your device of all downloaded applications and programs. Please use this function with extreme caution.

Specifications

CPU Processor Speed	2.4 GHz
Memory	Built-in EMMC Storage (64GB)
RAM	4GB
Camera	2.0 MP
WIFI	802.11b/g/n
HDD External Memory	Optional, 500GB/1TB/2TB
Display Screen	14.1-Inch IPS Screen
Resolution	1920 x 1080
Wireless Source	Bluetooth
Speaker	Built-in speakers 8R/1W*2
Battery	Built-in 7.6V / 5000mAh Rechargeable
Operating System	Windows 10

SUPPORT

If you have problems with your device, please consult the instructions in this manual. Please also visit us on the web at www.naxa.com to get up to the minute news, alerts, and documentation for your device. For additional assistance, please contact Naxa Technical Support.


NAXA Technical Support

2320 East 49th St. Vernon,
CA 90058 Tel: (323)-583-8883

http://www.naxa.com/naxa_support/

Made in China

Documents / Resources

 <p>14.1" Notebook NLT-1400</p> <p>Instruction Manual Please read carefully before using product</p>	<p>naxa NLT-1400 14.1 Inch Notebook Computer [pdf] Instruction Manual NLT-1400, 14.1 Inch Notebook Computer</p>
-------------------------------------------------------------------------------------------------------------------------------------------------------------------------------------------------	-------------------------------------------------------------------------------------------------------------------------------------

References

- [Naxa Electronics – Naxa Electronics](#)
- [Naxa Electronics – Naxa Electronics](#)
- [Naxa Support – Naxa Electronics](#)
- [Naxa Support – Naxa Electronics](#)