

NAVTOOL NTV-KIT857 Touchscreen Interface User Manual

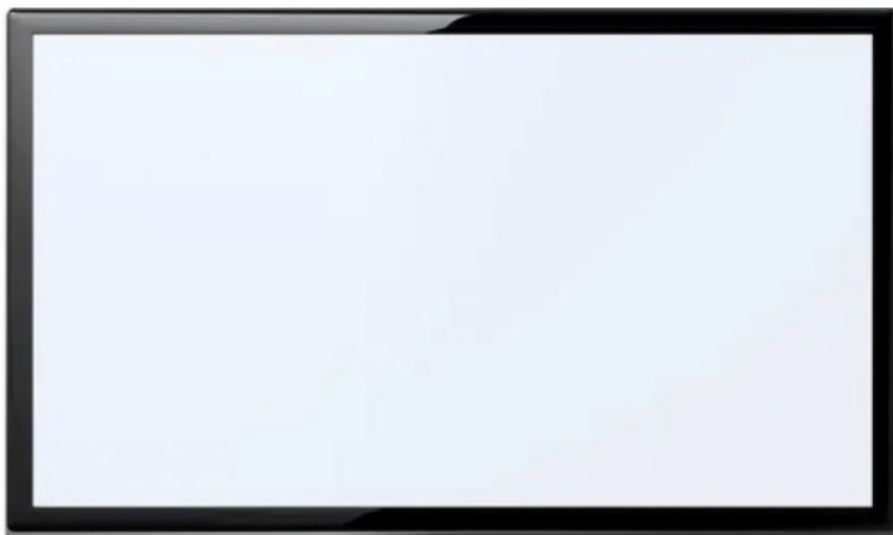
[Home](#) » [navtool](#) » NAVTOOL NTV-KIT857 Touchscreen Interface User Manual 

Contents

- [1 NAVTOOL NTV-KIT857 Touchscreen Interface](#)
- [2 Operation](#)
- [3 HDMI](#)
- [4 Connecting Your Phone to Apple CarPlay/Android Auto](#)
- [5 Apple CarPlay/Android Auto](#)
- [6 Documents / Resources](#)
 - [6.1 References](#)
- [7 Related Posts](#)



NAVTOOL NTV-KIT857 Touchscreen Interface



DESIGNED + MANUFACTURED IN THE

NOTICE: We recommend having this installation performed by a certified technician. All product names, logos, brands, trademarks and registered trademarks are property of their respective owners.

Touchscreen Operation Guide

Press and hold the corner of the touchscreen for 3-5 seconds to turn On / OFF the interface. Tap the touchscreen to Enter / Select. Tap the touchscreen to go Back after selecting HDMI or Camera / Video Inputs.

Apple CarPlay/Android Auto Settings Menu

Selecting Apple CarPlay/Android Auto will bring you to your Apple CarPlay/Android Auto screen if your phone is connected or paired. If no phone is connected or paired by Bluetooth, it will bring you to the Apple CarPlay/Android Auto Settings Menu (see right image). Select Settings to connect your phone to Apple CarPlay/Android Auto (see next page for instructions).

HDMI

Selecting HDMI Input will bring you to the HDMI Input of the interface. If no HDMI device is connected, you will see a No Signal HDMI message.

Connecting Your Phone to Apple CarPlay / Android Auto

Disconnect your phone from the vehicle's factory Bluetooth before connecting your phone to the interface. Go to the Bluetooth settings of your phone and select Forget This Device.

Follow the diagram below to connect your phone. Make sure your phone's Wifi and Bluetooth are on. Connect to the Bluetooth name of the interface on the CarPlay / Bluetooth Setting of your phone.

- iPhone: General > Settings > CarPlay > Connect
- Android: Settings > Bluetooth > Connect

Wireless CarPlay Settings

Discover and Connect Devices. Turn on your phone's Bluetooth and search CX_BTFC4BBCCAB01D then connect it. Pairing. Turn on your phone's Bluetooth and search CX_BTFC4BBCCAB01D then connect it.

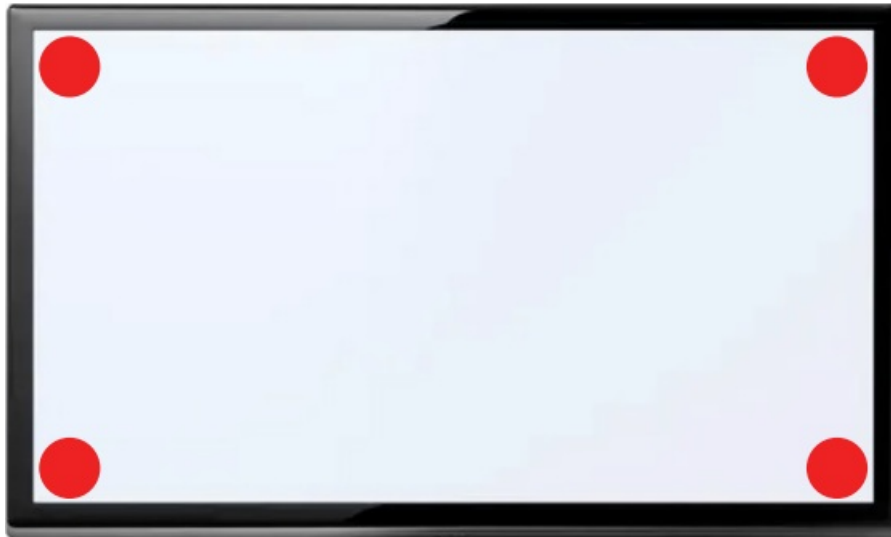
Apple CarPlay / Android Auto

Apple CarPlay- Select the Main Menu App Android Auto- Select the Exit App. You will not have access to the Apple CarPlay / Android Auto Settings Menu once paired. If you need to go back and make any changes to the Apple CarPlay / Android Auto Settings, set Apple CarPlay/Android Auto (Auto On Mode) to OFF in the Interface Miscellaneous Settings or disconnect your phone from the interface or turn off your phone's wifi and Bluetooth. See Interface Menus and Settings section of the manual for details about different settings options.

NOTICE:

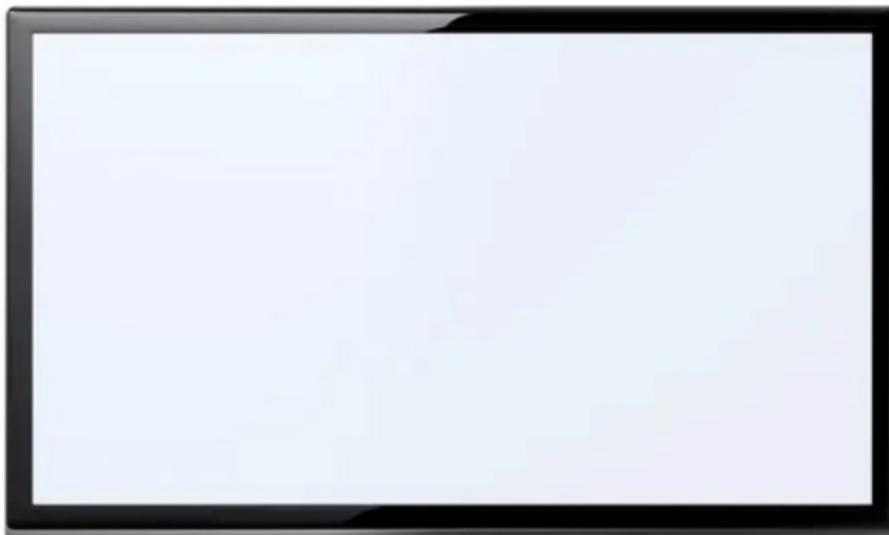
Touchscreen Interface User Manual DESIGNED + MANUFACTURED IN THE We recommend having this installation performed by a certified technician. All product names, logos, brands, trademarks and registered trademarks are property of their respective owners.

User Manual



- Disconnect your phone from the vehicle's factory Bluetooth if connected.
- Go to the Bluetooth Settings of your phone and select (Forget this Device) for the vehicle.
- You will be connecting to the Apple CarPlay / Android Auto feature of the interface via Bluetooth Connection.
- If you do not disconnect your phone from the vehicle's factory Bluetooth, the vehicle will not know which Bluetooth Connection it should automatically pair to. This will cause connection issues for Apple CarPlay / Android Auto.
- Set the vehicle's radio to AUX or an alternative AUX input device.
- Interface audio will not play through the car speakers if AUX is not connected or radio is not set to AUX input. This includes audio from Apple CarPlay, Android Auto, HDMI, navigation directions, music, and phone calls.
- Press and hold any corner of the touchscreen for 3-5 seconds to turn on and off the interface

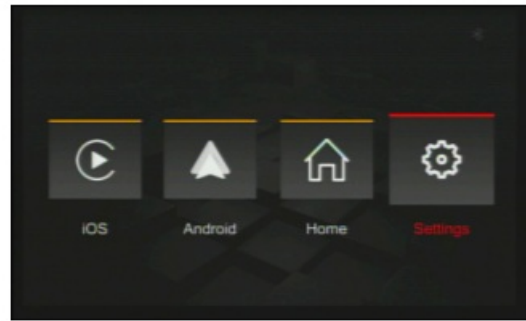
Operation



- Press and hold the corner of the touchscreen for 3-5 seconds to turn On / OFF the interface.
- Tap the touchscreen to Enter / Select.
- Tap the touchscreen to go Back after selecting HDMI or Camera / Video Inputs

Apple CarPlay/Android Auto Settings Menu

Selecting Apple CarPlay/Android Auto will bring you to your Apple CarPlay/Android Auto screen if your phone is connected or paired. If no phone is connected or paired by Bluetooth, it will bring you to the Apple CarPlay/Android Auto Settings Menu (see right image). Select Settings to connect your phone to Apple CarPlay/Android Auto (see next page for instructions).



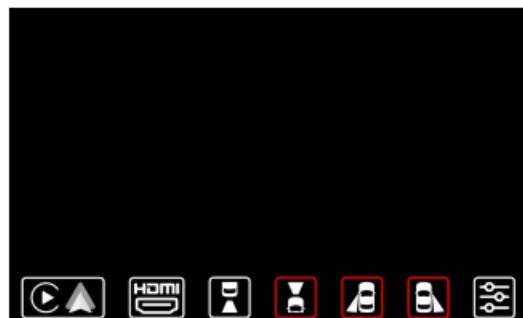
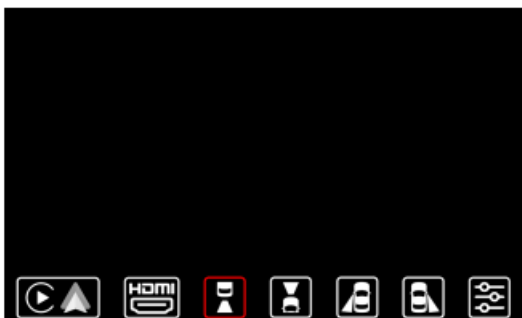
HDMI

- Selecting HDMI Input will bring you to the HDMI Input of the interface.
- If no HDMI device is connected, you will see a No Signal HDMI message.



Cameras / Video Input

Selecting Camera Inputs will let you see your aftermarket cameras if installed. If your vehicle has factory cameras such as a factory rear view camera, you won't be able to manually view them from here. It will still automatically display when putting the vehicle in reverse. If the vehicle is equipped with CAN, aftermarket front camera will automatically show when in drive up to 5-10 mph, and aftermarket left and right cameras will automatically show when activating left and right turn signals.

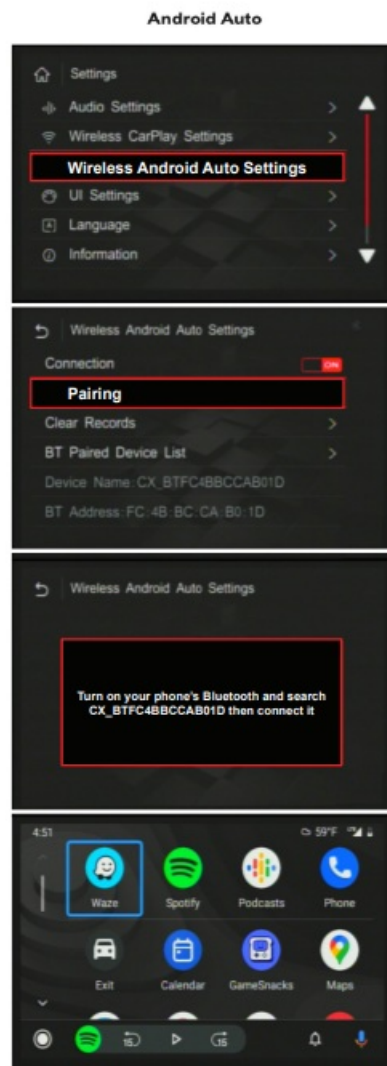
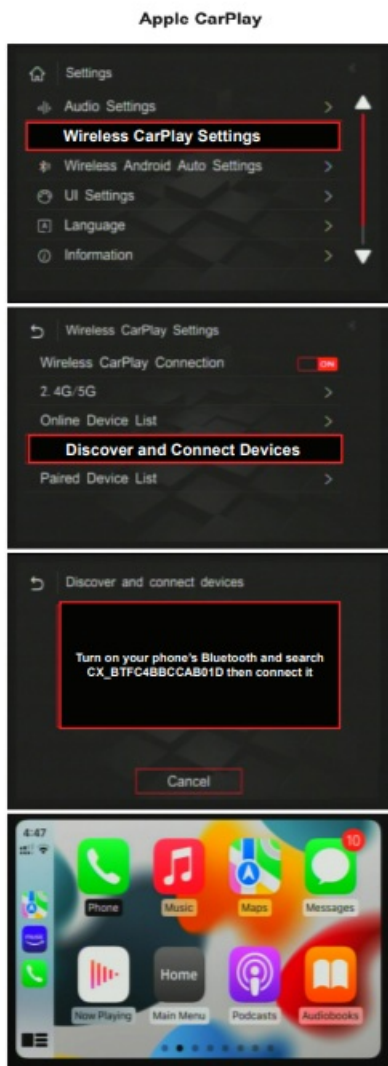


Connecting Your Phone to Apple CarPlay/Android Auto

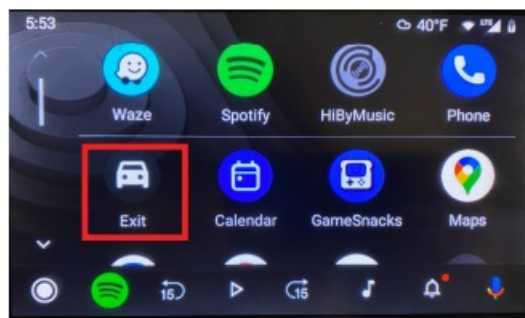
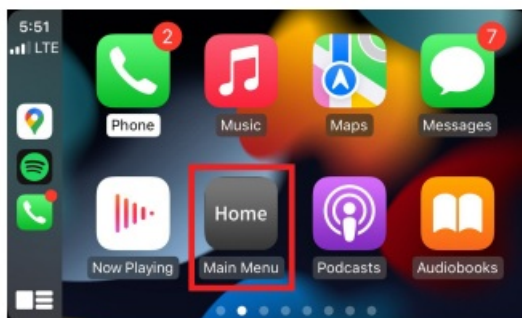
Disconnect your phone from the vehicle's factory Bluetooth before connecting your phone to the interface. Go to the Bluetooth settings of your phone and select Forget This Device. Follow the diagram below to connect your phone. Make sure your phone's Wifi and Bluetooth are on. Connect to the Bluetooth name of the interface on the CarPlay / Bluetooth Setting of your phone.

iPhone: General > Settings > CarPlay > Connect

Android: Settings > Bluetooth > Connect



Apple CarPlay/Android Auto



Apple CarPlay

Press and hold the bottom left corner of the touchscreen for 3-5 seconds will let you talk to Hey Siri.

Android Auto

- Tap the Microphone in the bottom right to talk to OK Google.
- Microphone will not work if the Original MIC setting is not set correctly.
- Audio will not play from the vehicle's speakers if the radio is not set to AUX.

To access the bottom interface menu bar

- Press and hold the top left corner of the touchscreen for 3-5 seconds.
- This will make the bottom interface menu bar appear.
- To Exit the interface and return to your vehicle's factory menu Once you have access to the bottom interface menu bar, you can press and hold the top left corner of the touchscreen for 3-5 seconds to exit the interface returning you to the vehicle's factory screen.

To Exit Apple CarPlay / Android Auto and return to your vehicle's factory menu

- Apple CarPlay- Select the Main Menu App
- Android Auto- Select the Exit App

You will not have access to the Apple CarPlay / Android Auto Settings Menu once paired If you need to go back and make any changes to the Apple CarPlay / Android Auto Settings, set Apple CarPlay/Android Auto (Auto On Mode) to OFF in the Interface Miscellaneous Settings or disconnect your phone from the interface or turn off your phone's wifi and Bluetooth.

See Interface Menus and Settings section of the manual for details about different settings options.

NavTool.com

Call: +1-877-628-8665

Text: +1-646-933-2100

Documents / Resources

	<p>NAVTOOL NTV-KIT857 Touchscreen Interface [pdf] User Manual NTV-KIT857, NTV-KIT858, NTV-KIT857 Touchscreen Interface, NTV-KIT857, Touchscreen Interface, Interface</p>
---	--

References

-  [NAVTOOL INC](#)