



Navkom CU-201-2 Series Fingerprint Reader Instruction Manual

[Home](#) » [Navkom](#) » Navkom CU-201-2 Series Fingerprint Reader Instruction Manual 

Contents

- 1 CU-201-2 Series Fingerprint Reader
- 2 Product Information
- 3 Product Usage Instructions
- 4 CU-202/2, CU-103/2 G-U, WINKHAUS, MACO, FUHR, KfV, ROTO ENEO
- 5 CONNECTION DIAGRAM: CU-202/2, CU-103/2 + G-U, WINKHAUS, MACO, FUHR, KfV, ROTO ENEO
- 6 CU-BBX KfV, WINKHAUS, GU, FUHR, X
- 7 CU-BBX MACO
- 8 CU-BBX ROTO
- 9 CU-BBX WINKHAUS BLUEMOTION, STV-Set-Y
- 10 CU-303 KfV, WINKHAUS, GU, FUHR, ELECTRIC STRIKE
- 11 CU-303 MACO, FUHR
- 12 CU-303 ROTO ENEO
- 13 Documents / Resources
 - 13.1 References
- 14 Related Posts

Navkom

CU-201-2 Series Fingerprint Reader



Product Information

The product is a CU-201/2 black box device with a built-in control unit that is installed in the door profile. It has a reset button labeled “R” that must be pressed and held for 10 seconds before the first use to return the device to factory settings. The connection diagram for the device must be provided by the door manufacturer. The device has a function that requires an adapter C-R-A1 to operate the night/day mode. The product also comes with a CU-202/2 control unit, two relays, an intercom, a power supply of 12/24 V, and a switch for day/night mode.

Product Usage Instructions

1. Before the first use, press and hold the “R” button located on the control unit for 10 seconds to reset the device to factory settings. To press this button, first remove the screw above it.
2. The connection diagram for the device must be provided by the door manufacturer.
3. To operate the night/day mode, an CR-A1 adapter must be used.
4. The device comes with a CU-202/2 control unit, two relays, an intercom, a power supply of 12/24 V, and a switch for day/night mode.

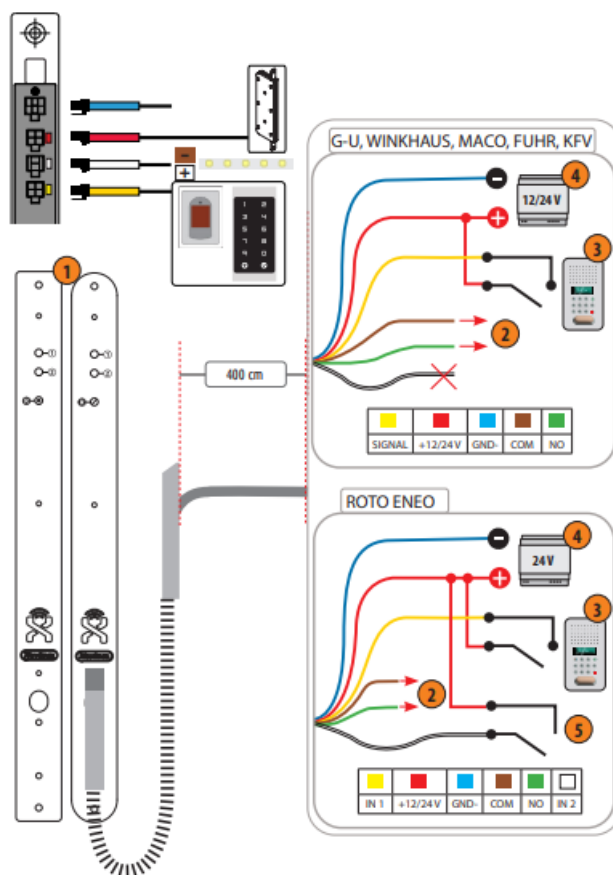
Before the first use, make sure to reset the device to the factory settings: press and hold R button located on the control unit for 10 seconds.

- **DOOR PROFILE BUILT-IN CONTROL UNIT:** To press this button, first remove the screw.

Before using the device for the first time, you must restore its factory settings: hold down the R button on the controller for 10 seconds.

- **CONTROL PANEL MOUNTED IN THE DOOR PROFILE:** Unscrew the screw to access the button.

CU-202/2, CU-103/2 G-U, WINKHAUS, MACO, FUHR, KfV, ROTO ENEO

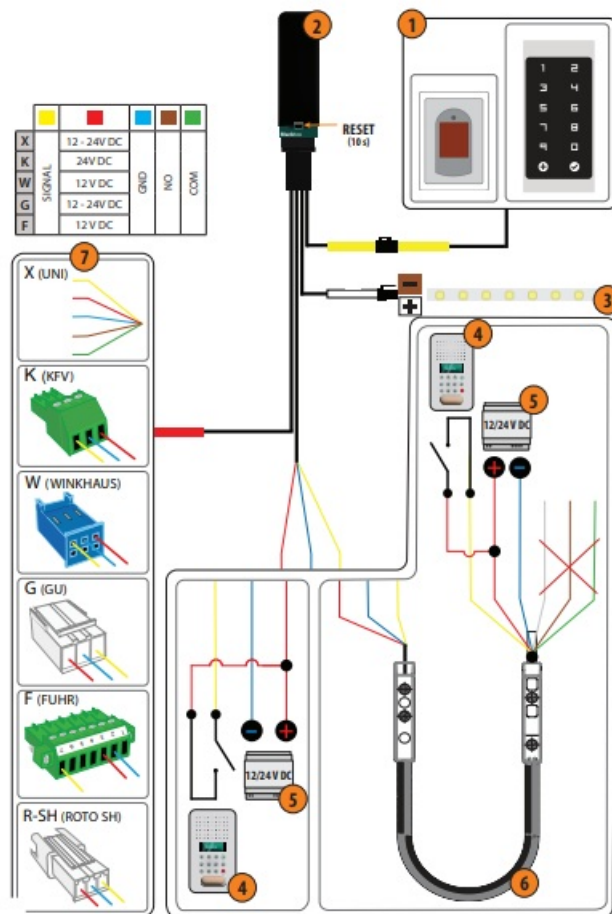


CONNECTION DIAGRAM: CU-202/2, CU-103/2 + G-U, WINKHAUS, MACO, FUHR, KfV, ROTO ENEO

1. CONTROL UNIT
2. RELAY 2
3. INTERCOM
4. POWER SUPPLY 12/24 V
5. NIGHT/DAY MODE

Note: IN ORDER FOR NIGHT/DAY MODE TO FUNCTION, ADAPTER C-R-A1 SHOULD BE USED.

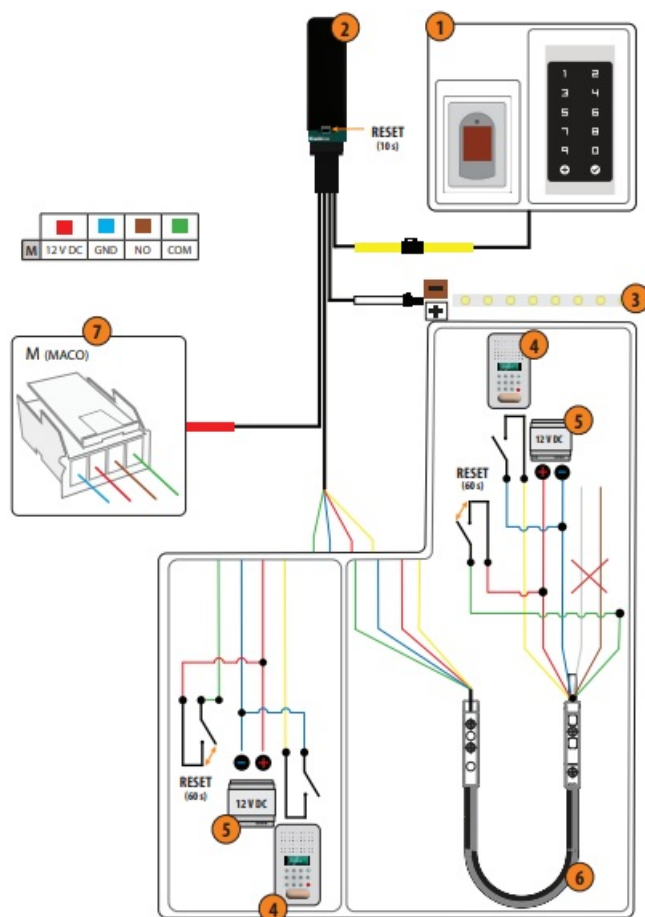
CU-BBX KfV, WINKHAUS, GU, FUHR, X



CONNECTION DIAGRAM:

1. READER/KEYPAD
2. CONTROL UNIT
3. LED LIGHTING
4. INTERCOM
5. POWER SUPPLY 12/24 V
6. DOOR LOOP
7. MOTOR LOCK

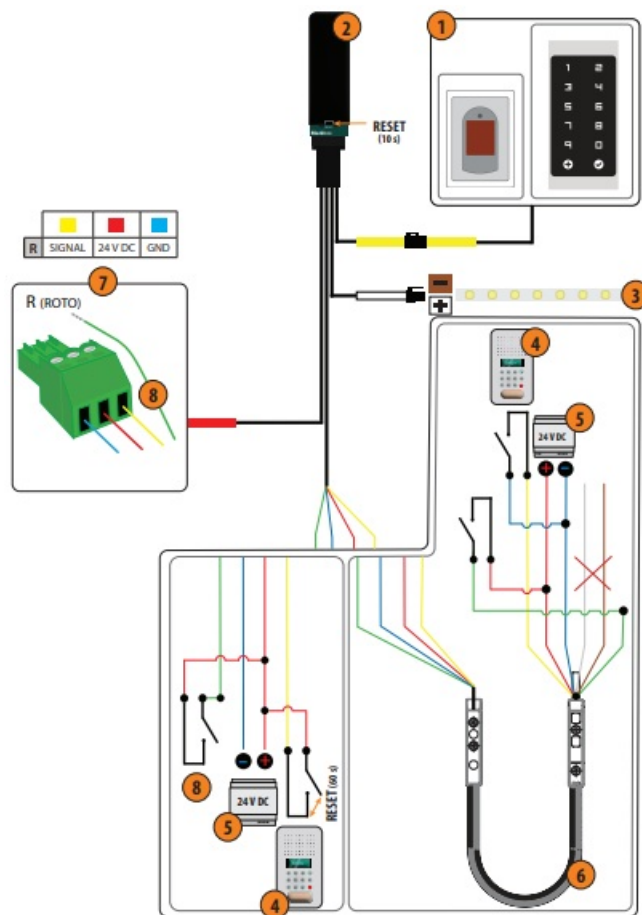
CU-BBX MACO



CONNECTION DIAGRAM: BBX+ MACO

1. READER/KEYPAD
2. CONTROL UNIT
3. LED LIGHTING
4. INTERCOM
5. POWER SUPPLY 12 V
6. DOOR LOOP
7. MOTOR LOCK

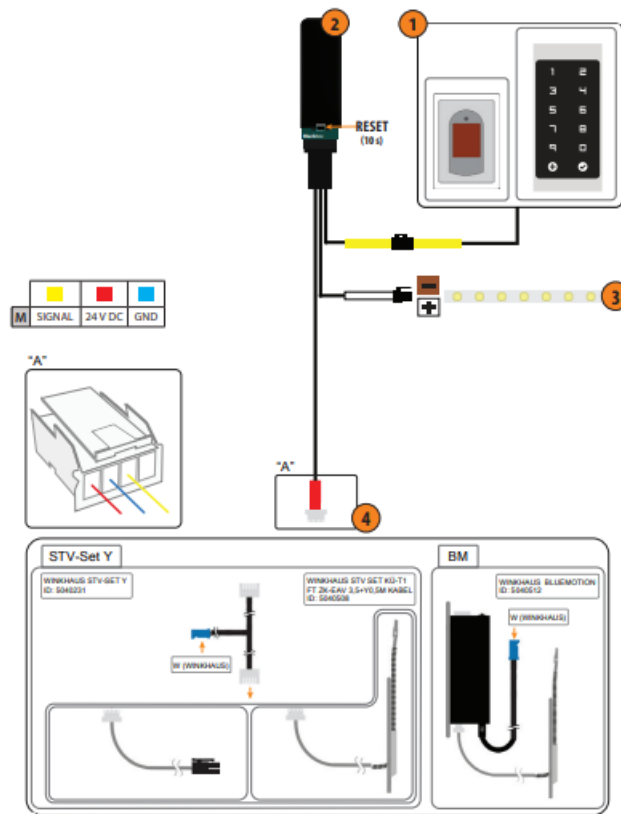
CU-BBX ROTO



CONNECTION DIAGRAM: BBX+ ROTO

1. READER/KEYPAD
2. CONTROL UNIT
3. LED LIGHTING
4. INTERCOM
5. POWER SUPPLY 24 V
6. DOOR LOOP
7. MOTOR LOCK
8. NIGHT/DAY MODE

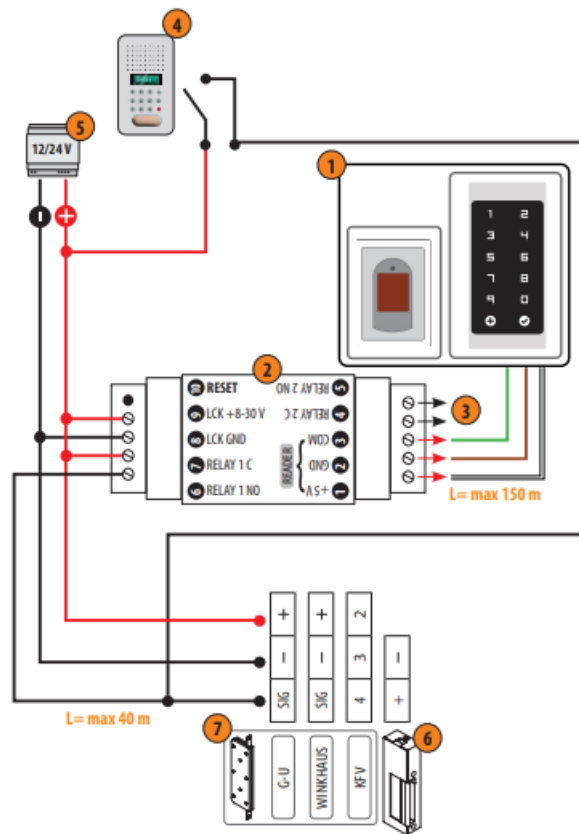
CU-BBX WINKHAUS BLUEMOTION, STV-Set-Y



CONNECTION DIAGRAM: BBX+ WINKHAUS BLUE-MOTION, STV-Set-Y

1. READER/KEYPAD
2. CONTROL UNIT
3. LED LIGHTING
4. MOTOR LOCK

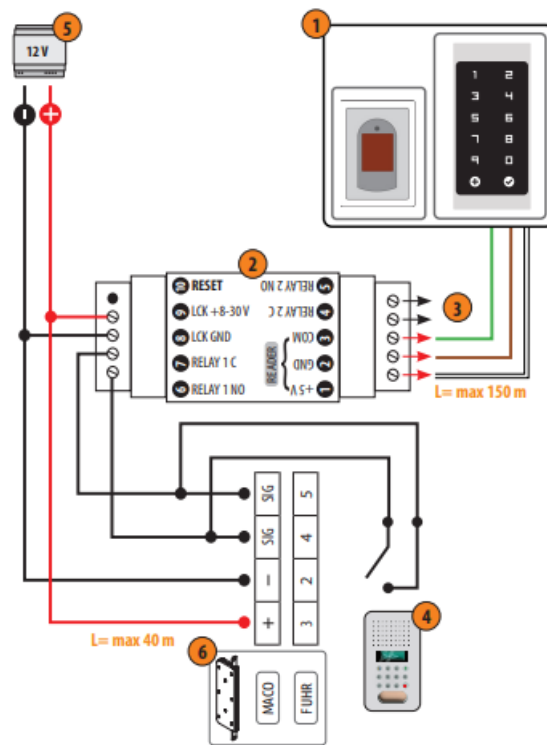
CU-303 KfV, WINKHAUS, GU, FUHR, ELECTRIC STRIKE



CONNECTION DIAGRAM: DIN+ KFU, WINKHAUS, GU, FUHR, ELECTRIC STRIKE

1. READER/KEYPAD
2. CONTROL UNIT
3. RELAY 2
4. INTERCOM
5. POWER SUPPLY 12/24 V
6. ELECTRIC STRIKE
7. MOTOR LOCK

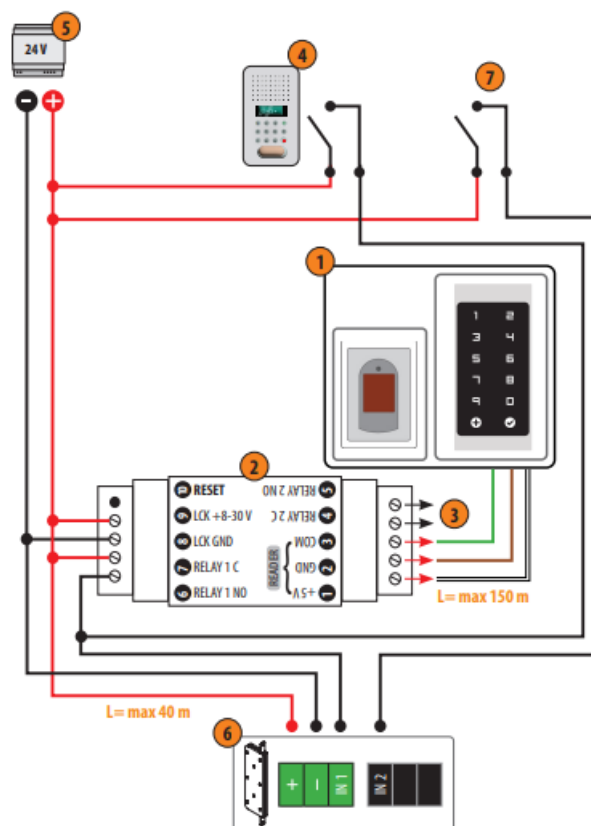
CU-303 MACO,FUHR



CONNECTION DIAGRAM: DIN+ MACO, FUHR

1. READER/KEYPAD
2. CONTROL UNIT
3. RELAY 2
4. INTERCOM
5. POWER SUPPLY 12 V
6. MOTOR LOCK

CU-303 ROTO ENEO




CONNECTION DIAGRAM: DIN+ ROTO ENEO

1. READER/KEYPAD
2. CONTROL UNIT
3. RELAY 2
4. INTERCOM
5. POWER SUPPLY 24 V
6. MOTOR LOCK
7. NIGHT/DAY MODE

E: info@navkom.si

W: www.navkom.si

Documents / Resources

<p>Navkom</p> <ul style="list-style-type: none"> 1 NAVODILA ZA POMOČ 2 CONNECTION MANUAL 3 ANSCHLUSMANLEITUNG 4 ISTRUZIONI DI COLLEGAMENTO 5 INSTRUCTIONS DE CONNEXION 6 NÁVOD K ZAPOJENÍ 7 UPUTE ZA SPAJANJE 8 INSTRUKCJA POŁĄCZENIA 9 ОДИНОВИЗНАЧЕННЯ <p>TOUCH  TO OPEN</p>	<p>Navkom CU-201-2 Series Fingerprint Reader [pdf] Instruction Manual</p> <p>CU-201-2, CU-202-2, CU-103-2, Fingerprint Reader, CU-201-2 Series Fingerprint Reader, CU-201-2 Series, Fingerprint Reader</p>
--	--

References

-  [Čitalniki prstnih odtisov | Navkom](#)

