



NAVITEL DVR Player User Manual

[Home](#) » [NAVITEL](#) » NAVITEL DVR Player User Manual 



NAVITEL



User Manual NAVITEL DVR Player

Contents

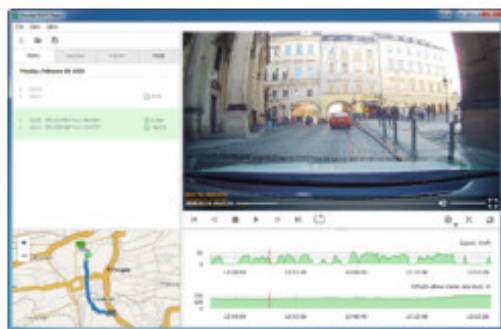
- [1 NAVITEL DVR Playe](#)
- [2 Installation and first run](#)
- [3 Program interface](#)
- [4 Documents / Resources](#)
- [5 Related Posts](#)



NAVITEL DVR Playe

Get started

NAVITEL® has developed the NAVITEL DVR Player program for PCs on Windows OS for DVR owners. NAVITEL DVR Player is a software for quick viewing video files captured by the NAVITEL® DVRs. Save fragments of the video, export the tracks of the routes and view the trip on the map if it was recorded by a DVR with GPS. This document describes the user interface elements and basic functions of the NAVITEL DVR Player.



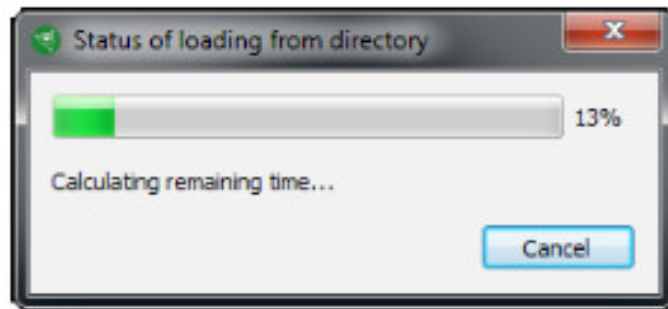
System requirements

- OS Windows 7 or higher (32/64 bit);
- 2 GB RAM;
- 300 MB of free disk space;
- Processor – at least 1 GHz clock frequency

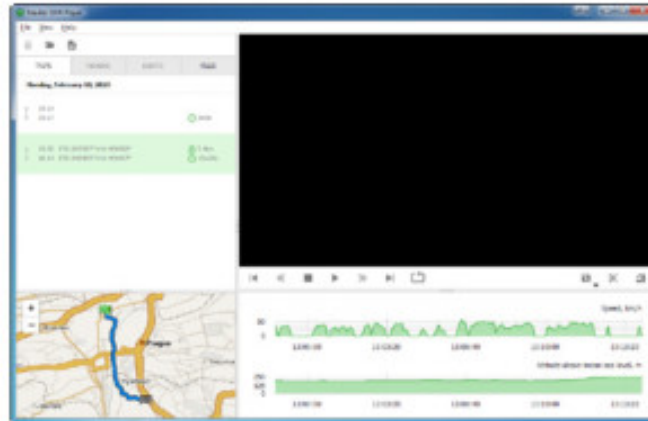
Manual

Installation and first run

Install NAVITEL DVR Player on the PC by following all the steps of the installation wizard. After the installation is completed, connect the memory card to the PC using a card reader and run the NAVITEL DVR Player program on your computer. If the memory card is connected correctly, the program will automatically detect it and start reading from the directory.

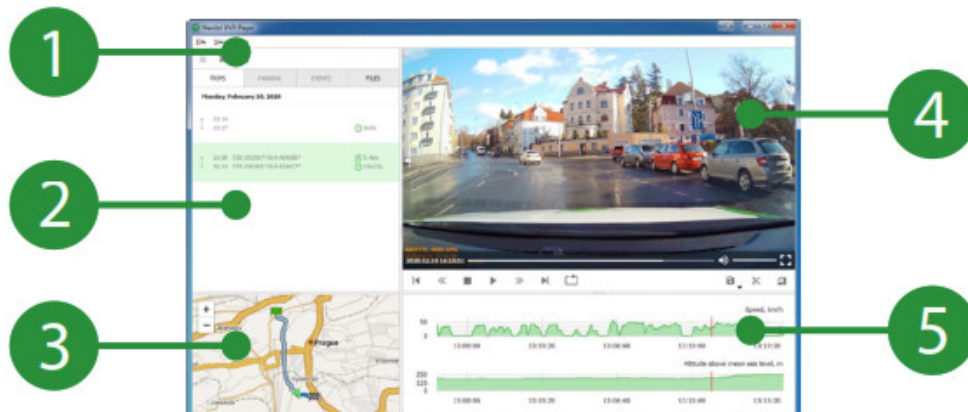


After reading, the recorded files will be available for viewing in the program explorer.




Program interface

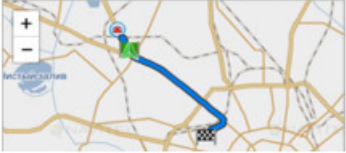
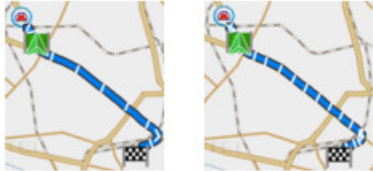
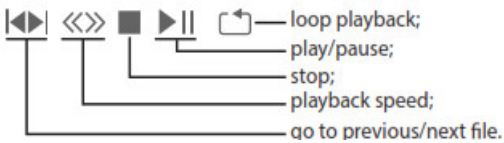



The program interface consists of a menu (1) and four sections: explorer (2), map (3), videoplayer (4) and graphs/videotrack (5).

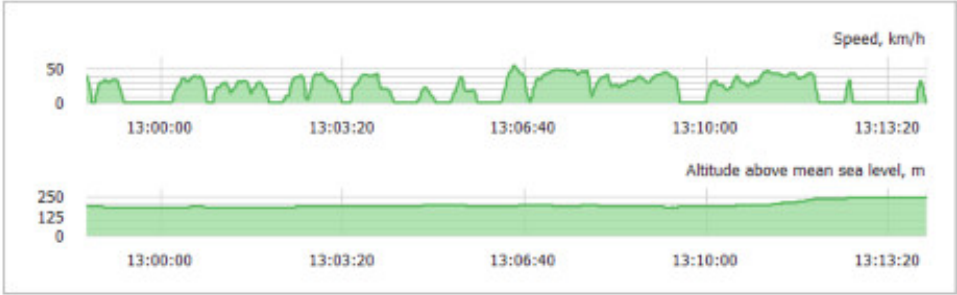



Section sizes in the program can be adjusted with



1	Menu	<p>The menu consists of the tabs “File”, “View” and “Help”. Five buttons are available on the “File” tab:</p> <ul style="list-style-type: none"> • “Open external drive” – reads files in the directory of the memory card and opens them in the program explorer; • “Open directory” – opens Windows explorer to select the desired folder for reading; • “Open file” – opens Windows explorer to select the desired file; • “Check update” – the program checks for the latest update; • “Quit” – exit from NAVITEL DVR Player. Video files stored on a PC can also be played in the NAVITEL DVR Player. Five buttons are available in the “View” tab: • “Time stamps on track” – adjusting the time stamps along the route line on the map: 30 seconds, 1 minute, 5 minutes or 20 minutes; • “Show video” – select the main or rear camera in the player; • “Rotate video” – turn the video of the selected camera 90 ° clockwise; • “Charts” – selection of the display in the section of graphs of the dependences of speed and altitude on time; • “Language” – choice of interface language – English, Russian, Polish or Czech; The “About” button is available in the “Help” tab, when clicked, a window appears about the version of the Navitel DVR Player program, the libraries used and their licenses.
2	Explorer	<div data-bbox="916 1171 1331 1267">  </div> <p>Duplicate keys on the top panel of the explorer:</p> <p>If the memory card is scanned successfully, the recorded files for playback will automatically appear in the explorer with the date, video duration and GPS coordinates. Explorer has four tabs:</p> <p>ICON 6</p> <p>All recorded videos are automatically placed in the tab «Files» and then distributed to the rest of the tabs due to internal file marks, made by your DVR. When you click on any file, it automatically starts playing.</p>

3	Map	<p>The map section show your GPS location at the time of file recording.</p>  <p>When you click on the route line, the video will be rewound to that moment, at which the car was at this point on the map. Adjusting the time stamp allows you to see white marks with different time intervals to choose from: 30 seconds, 1 minute, 5 minutes or 20 minutes.</p> 
4	Videoplayer	<p>A videoplayer is a player in which a video track with buttons for adjusting the sound and switching to full screen mode is available. In the bottom left there are standard player control buttons:</p>  <p>By clicking on the loop playback button, using the Shift + left mouse button and Shift + right mouse button combinations, select the desired interval on the graph / video section for loop playback. The pause playback speed buttons work like frame forward or a second backward. You can also control the arrows on the keyboard: right or left – rewind during playback for 10 seconds forward or backward, respectively, up or down arrows can select files from the program explorer of the current tab, space – pause. The buttons are available in the lower right part of the player:</p>  <p>In the following buttons are available:</p> <ul style="list-style-type: none">• “Save a shot” – saves the current video shot in .jpg or .png format;• “Save screenshot of the window” – saving the current shot of the video along with the screenshot of the program in .jpg or .png format;• “Save video and track” – select the folder for copying the files of the current video to the .mov format and the track of coordinates, if the video was recorded with GPS;• “Save Track” – select a folder for saving the track of coordinates in the formats NMEA, KML, CSV, GPX and PLT, if the video was recorded with GPS; <p>When you click on the button  on the graphs/videotrack section using the Shift + left mouse button and Shift + right mouse button combinations, you need to select the desired fragment for export. When you click the same button on the side, a window will appear for selecting a video file option, type of container, main or rear camera and directory to save.</p> <p>When the button  is pressed, the current video is rotated 90 ° clockwise.</p>

5	Graphs / Videotrack	<p>This section presents a choice of graphs of the dependences of the speed of the car and its height above sea level on time, corresponding to the time of the recorded file. If you hover over the graph, a message appears about the current speed or altitude of the car, the date and time of recording.</p> <p>When you click on any graph, it rewinds the video at the moment when the car was at this point.</p>  <p>If the file was recorded without using GPS, only the video track will be displayed in the graphs section. When you hover, the message will indicate only the date and time of the recording.</p> 
---	---------------------	--


Attention!

Check the relevance of the date, time, GPS and GMT (UTC) settings on your DVR and PC.

In case of irrelevant settings, the NAVITEL DVR Player program may incorrectly display the above parameters in the explorer of the scanned files, on the video track of the player and on the graphs/videotrack.



Documents / Resources

	<p>NAVITEL DVR Player [pdf] User Manual DVR Player</p>
---	--