

[Skip to content](#)

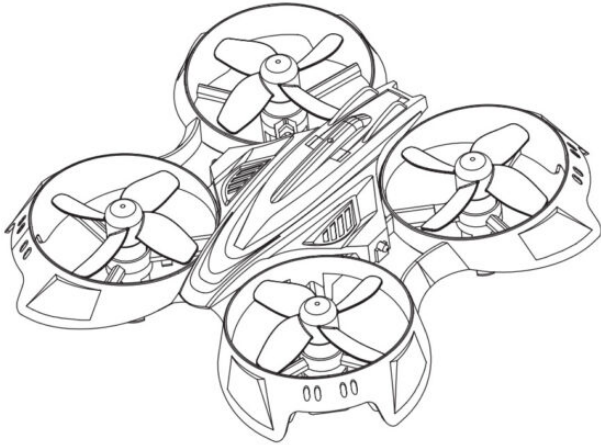
Manuals+

User Manuals Simplified.



NAVIG8R NAV-RCDRONE15 Mini Quadcopter User Manual

[Home](#) » [NAVIG8R](#) » NAVIG8R NAV-RCDRONE15 Mini Quadcopter User Manual



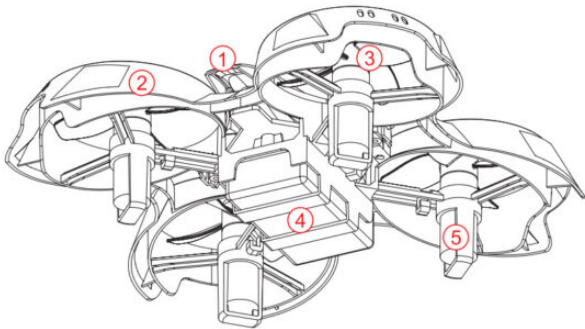
User Manual

Contents [hide](#)

- [1 KNOW YOUR DRONE](#)
- [2 WHAT'S IN THE BOX](#)
- [3 PRE-FLIGHT PREPARATION](#)
- [4 BATTERY INSTRUCTIONS](#)
- [5 KNOW YOUR REMOTE CONTROL](#)
- [6 FLIGHT CONTROLS](#)
- [7 FLIPS AND ROLLS](#)
- [8 FINE-TUNING](#)
- [9 TROUBLESHOOTING](#)
- [10 WARRANTY AGAINST DEFECTS](#)
- [11 Documents / Resources](#)
- [11.1 References](#)
- [12 Related Posts](#)

KNOW YOUR DRONE

The drone uses 2.4G remote control technology to enable multiple drones to fly without interference and allow for functions, such as flight, flips & rolls, fine-tuning, one-key



reset, speed switch, etc.

- | | |
|-----------------|------------------|
| 1. Upper Casing | 4. Battery |
| 2. Lower Casing | 5. Circuit Board |
| 3. Propeller | |

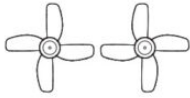
WHAT'S IN THE BOX



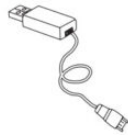
Drone x1
(Battery Included)



Remote Control x1



A x1, B x1
(Backup Propellers x2)



USB Charging Cable x1



User Manual x1



Propeller Disassembly
Tool x1

PRE-FLIGHT PREPARATION

1. PLEASE FIND AN OPTIMAL FLYING ENVIRONMENT.



Indoor: Spacious areas away from obstructions, people or pets is preferred



Outdoor: Sunny, no wind or mild breezy weather is preferred.

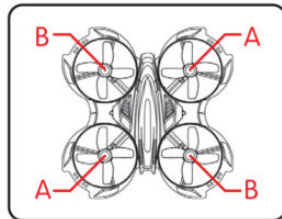
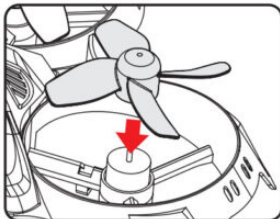


Please keep the drone in sight during the flight and keep it away from barriers, high-tension cables, trees and people.



Do not fly in extreme environments such as extreme heat, snow, strong winds or heavy rain.

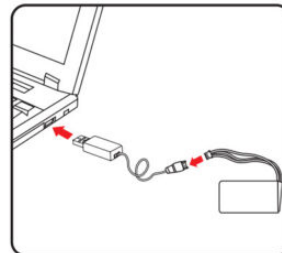
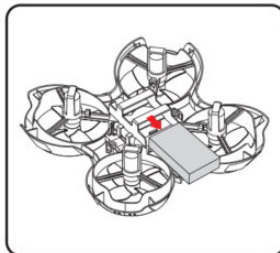
2. PROPELLER INSTALLATION



(Match Propeller A with Shaft A and Propeller B with Shaft B)

Align the propellers to the motor shaft and press them until fixed.

3. BATTERY CHANGING FOR THE DRONE



Push the battery out of the drone as indicated in the first picture above. Unplug the battery connector to completely remove the battery. Next, connect the battery to a USB charging source to begin charging.

Note: The LED light turns off during charging and turns on when charging is complete. A full charge takes approx 60 – 80 minutes. Flight time lasts approx 5-6 minutes,

BATTERY INSTRUCTIONS

1. There can be a certain risk when using batteries that may cause injury or property damage. Users must be aware of the risks and take full responsibility if using

batteries improperly.

2. If battery leakage occurs, avoid contact with skin or eyes. If it does happen wash your eyes with clean water and seek medical attention immediately.
3. Please remove the battery from the charger if you sense any smell, hear any noise or notice any smoke.

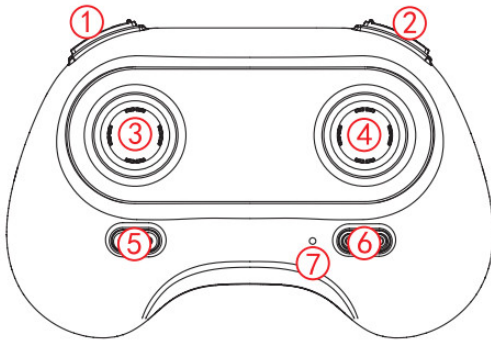
BATTERY CHARGING

1. Only use the supplied charger.
2. Do not charge a warped or damaged battery.
3. Do not overcharge the battery. Unplug from charger once fully charged.
4. Do not charge the battery next to flammable materials, such as carpet or wooden furniture. Please keep an eye on the battery when charging.
5. Do not charge the battery while it is hot.
6. The charging temperature should be between 0 – 40°C.
7. For charging using an adapter with 100-240V 50/60Hz 0.5A and input of 5.0V – 500mA 0.5 -1.5A. Do not use a quick charger.

RECYCLING

This product contains electronic components and batteries. Please only dispose of it according to your local council regulations

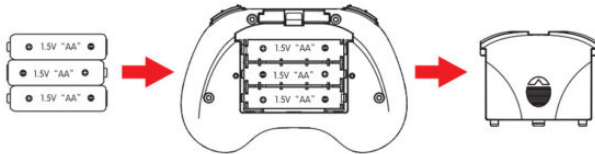
KNOW YOUR REMOTE CONTROL



1. Speed (High/Low)
2. Flip & Rolls
3. Left Joystick: Ascend/Descend Turn Left/ Turn Right
4. Right Joystick: Forward/Backward/Left /Right (click on a stick for fine-tuning)
5. One Key Reset
6. Power Switch
7. Power Indicator Light

BATTERY INSTALLATION FOR REMOTE CONTROLLER

Open the battery compartment cover and insert three 1.5V AAA batteries (not included) with the poles aligned as instructed.

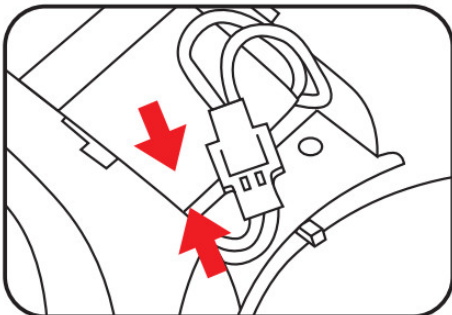


Notes:

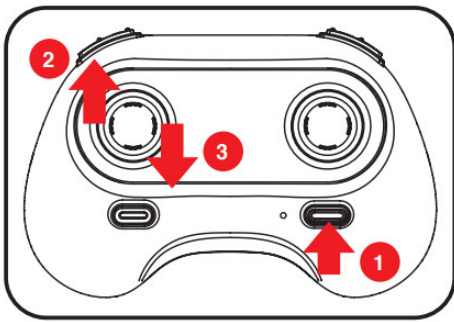
1. Pay attention to battery polarity when installing, never reverse them.
2. Never mix new batteries with used batteries.
3. Never mix batteries of different types.

PAIR THE REMOTE CONTROLLER WITH THE DRONE

Plug the battery connector into the drone's base and wait until the drone's indicator light starts to blink slowly, which indicates waiting for pairing.

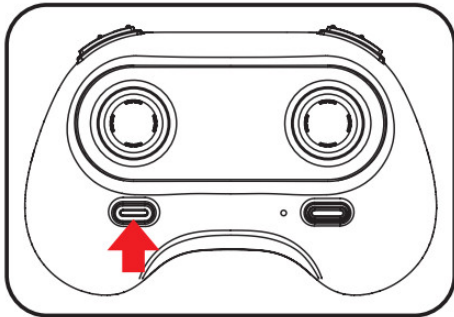


Power on the remote controller. When the remote controller's indicator light blinks, toggle the left joystick upward with a sound of the beep and then toggle it downward with a sound of the beep. When the remote controller's indicator light and drone's indicator light turn solid, the pairing has been successful.



ONE KEY RESET

Put the drone on a flat surface and press the One Key Reset button.
The drone lights will quickly blink for 2 seconds before turning solid, which indicates the reset has been successful.

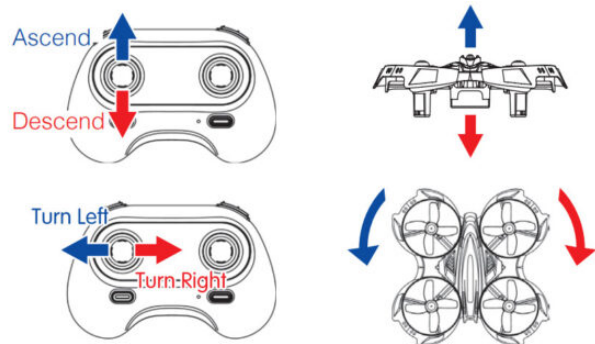


FLIGHT CONTROLS

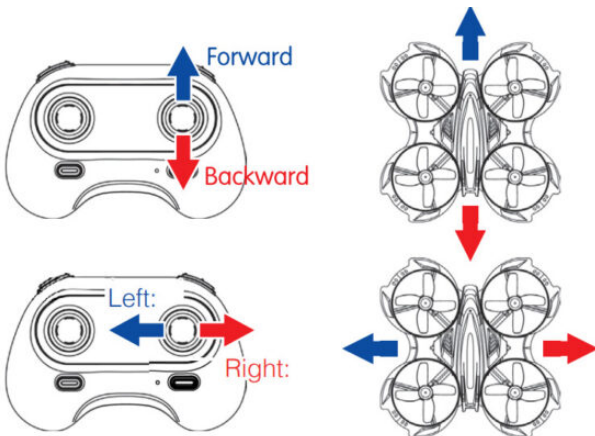
BASIC FLIGHT

The left joystick controls altitude and left/right turning
The right joystick controls forwards/backward flight and left/right strafing

LEFT JOYSTICK

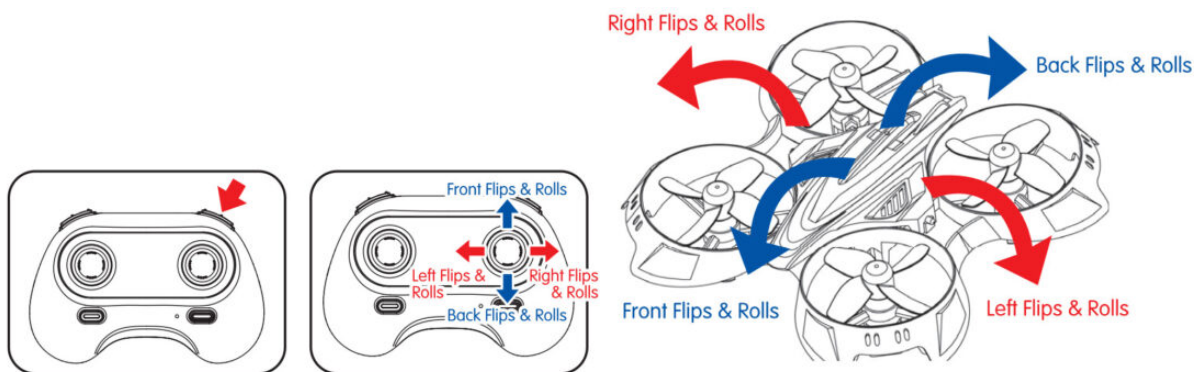


RIGHT JOYSTICK



FLIPS AND ROLLS

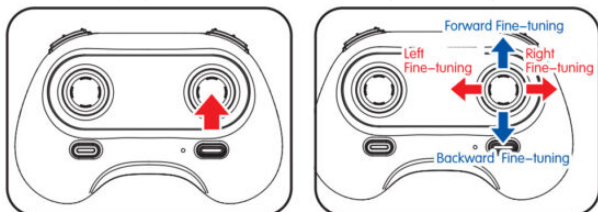
The aircraft is able to perform flips and rolls when at an altitude of over 2 meters.
To perform a flip or roll, tap the Flips & Rolls button on the remote controller, and you will hear a beeping sound.
Next push the right joystick in the desired direction of the flip or roll to perform it.
To exit Flips & Rolls mode tap the Flips & Rolls button again, and the remote controller will make a beeping sound to confirm exit.



FINE-TUNING

If the drone spins or banks undesirably, use the fine-tuning function to trim the movement.

Click on the right joystick, when you hear a beeping sound, push the joystick in the opposite direction of the unwanted movement to trim it back to normal.



Note:

When the drone is flying at an altitude of 30cms or lower, its flight will be influenced by a vortex generated from its propellers and may appear unstable. This is a normal side effect which is called the "Wing-In-Ground Effect".

TROUBLESHOOTING

PROBLEMS	CAUSES	SOLUTIONS
THE CONTROLLER NOT TURNING ON	Batteries not correctly installed	Correctly install the batteries for the controller
	1. Low battery for the controller	Replace with the new batteries
FAIL TO PAIR	2. Low battery for the aircraft	Recharge the battery or replace it with new batteries
	3. Improper operation for pairing	Turn off the aircraft and the controller and re-pair using instructions from this manual.
AIRCRAFT BANKS	Gyro not calibrated	Refer to the 'Fine-Tuning' section of this manual
	1. Charging cable malfunction	Replace with a new charging cable (Use an adapter with the input of 5V 0.5- 1.5A instead of a quick charger)
BATTERY NOT CHARGING	2. Battery malfunction	Replace with new batteries. Contact our support department to source a replacement battery
MOTOR CAN NOT SPIN	Motor cable disconnected	Refit the aircraft's upper cover and check if the interior line is disconnected. If so, please re-connect it

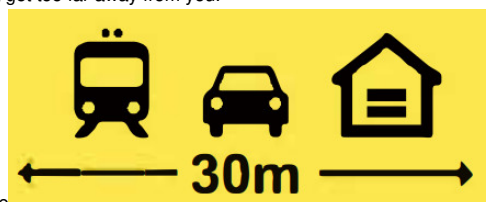


IMPORTANT SAFETY INFORMATION

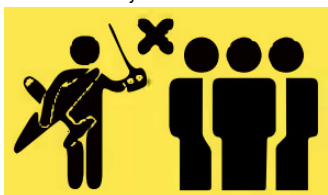
Congratulations on your purchase. We hope you have a lot of fun with it but there are just a few things you need to remember for everyone's safety.



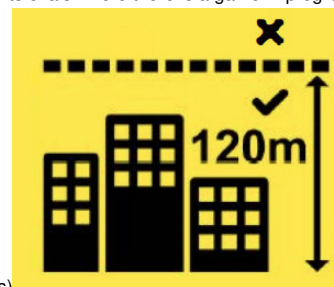
You must only operate this aircraft in your line of sight in daylight. Don't let it get too far away from you.



You must not fly closer than 30 meters to vehicles, boats, buildings or people



You must not fly over any populous area, such as beaches, other people's backyards, heavily populated park5, or sports ovals where there is a game in progress.



If you are in controlled airspace, which covers most Australian cities. you must not fly higher than 400 feet (120 meters)

You should not fly within 5.5 km of an airfield



It's illegal to fly for money or economic reward unless you have an unmanned operator's certificate issued by the Civil Aviation Safety Authority (CASA).
Safe and happy flying!

Further information

Model Aeronautical



Association of Australia www.maaa.asn.au

CASA

- Model aircraft: casa.gov.au/sportaviation
- Remotely piloted aircraft casa.gov.au/rpa
- Phone: 131 757

WARRANTY AGAINST DEFECTS

Laser warrants your new product to be free from defects in materials and workmanship for 12 months, from the date of purchase, provided that the product is used in accordance with accompanying recommendations or instructions where provided. The benefit of this warranty is in addition to your rights under the Australian Consumer Law and to other rights and remedies of the consumer under a law in relation to the goods or services to which the warranty relates.

Through a network of retailers and resellers, Laser will provide you with your choice of a refund, repair, or exchange (where possible) for this product if it becomes defective within the warranty period. This warranty will no longer apply where the defect is a result of alteration, accident, misuse, abuse, normal wear and tear, neglect, or improper storage. Please retain your receipt as proof of purchase

How to make a product warranty claim:

1. Find your receipt with the date of purchase. If this is not available, Laser will make an assessment based on the date of manufacture, condition of the product, and type of defect.
2. Please contact your original place of purchase. They will assess the nature of the fault and refund or replace the product as per their store refund or warranty policy.
3. If your original place of purchase cannot be contacted, please contact Laser with a description of the fault. To assist our team in providing you with a quick resolution, please include any photos and/or a short video demonstrating the fault with your product.
 - Phone: (02) 9870 3355
 - Email: support@laserco.com.au
 - Online: www.laserco.net/support/warranty and follow the website instructions
 - Business Address: U1 6-8 Byfield Street, Macquarie Park, 2113, NSW, Australia
4. The laser will review your claim and in the first instance, attempt to troubleshoot and resolve the issue for you without the need to return the product.
5. If it is determined via troubleshooting that your product may be faulty, our team will provide instructions to have the product returned for assessment. If the product does need to be returned within the warranty period, Laser will arrange return shipping at no cost to you.
6. Once we receive the product, our experienced technicians will assess it and determine how best to resolve the issue.

Our goods come with guarantees that cannot be excluded under the Australian Consumer Law. You are entitled to a replacement or refund for a major failure and compensation for any other reasonably foreseeable loss or damage. You are also entitled to have the goods repaired or replaced if the goods fail to be of acceptable quality and the failure does not amount to a major failure.

For more helpful guides visit us at



LASER

www.youtube.com/LasercoAu



www.laserco.com.au

<https://www.youtube.com/channel/UCQOuBKNSya0x9zCjPfYzklg>



[NAVIG8R NAV-RCDRONE15 Mini Quadcopter](#) [pdf] User Manual
NAV-RCDRONE15, Mini Quadcopter, NAV-RCDRONE15 Mini Quadcopter



References

- [Drones | Civil Aviation Safety Authority](#)
- [Sport aviation | Civil Aviation Safety Authority](#)
- [Laser: The Ultimate Tech Hub for Home Entertainment, Audio, Smart Home & More](#)
- [Warranty](#)
- [Model Aeronautical Association of Australia - Model Aeronautical Association of Australia](#)

Manuals+

- [home](#)
- [privacy](#)