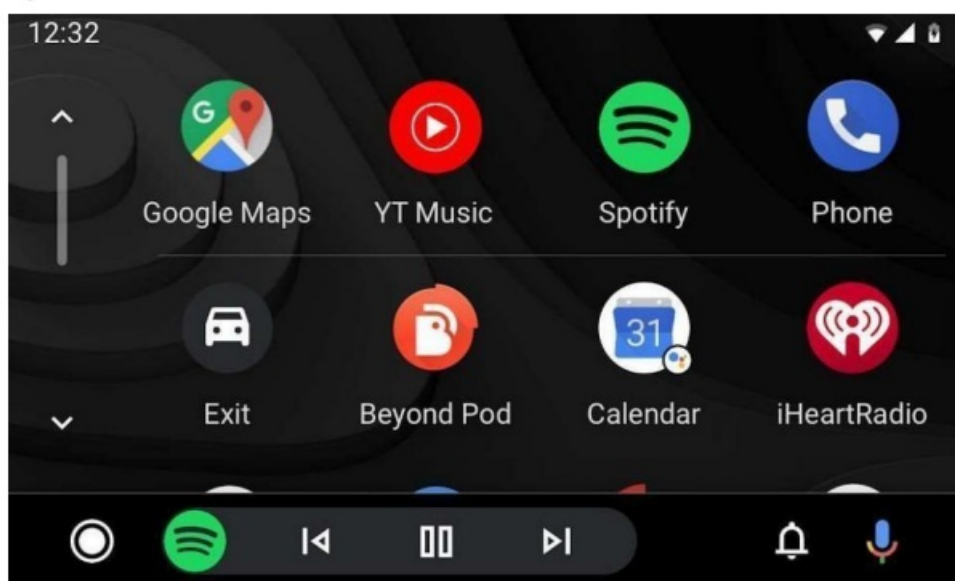


Naturbo ZTCP66-NBT Car Play and Android Auto User Guide

[Home](#) » [Naturbo](#) » Naturbo ZTCP66-NBT Car Play and Android Auto User Guide 

Naturbo ZTCP66-NBT Car Play and Android Auto



Contents

- 1 [How to switch the OEM system and the CarPlay system](#)
- 2 [WiFi antenna and WiFi channel setting](#)
- 3 [Wired CarPlay Connection](#)
- 4 [Wireless CarPlay Connection](#)
- 5 [Wireless AirPlay Connection](#)
- 6 [Wired Android Auto Connection](#)
- 7 [Wireless Android Auto Connection](#)
- 8 [Wired Autolink](#)
- 9 [Youtube](#)
- 10 [Setting](#)
- 11 [FCC Statement](#)
- 12 [Customer Support](#)
- 13 [Documents / Resources](#)
 - 13.1 [References](#)
- 14 [Related Posts](#)

How to switch the OEM system and the CarPlay system

After cable connection, by long press “MENU”, “C” or “★” button from knob control / iDrive / Touchpad, you can

switch the system between the original OEM system and the CarPlay system

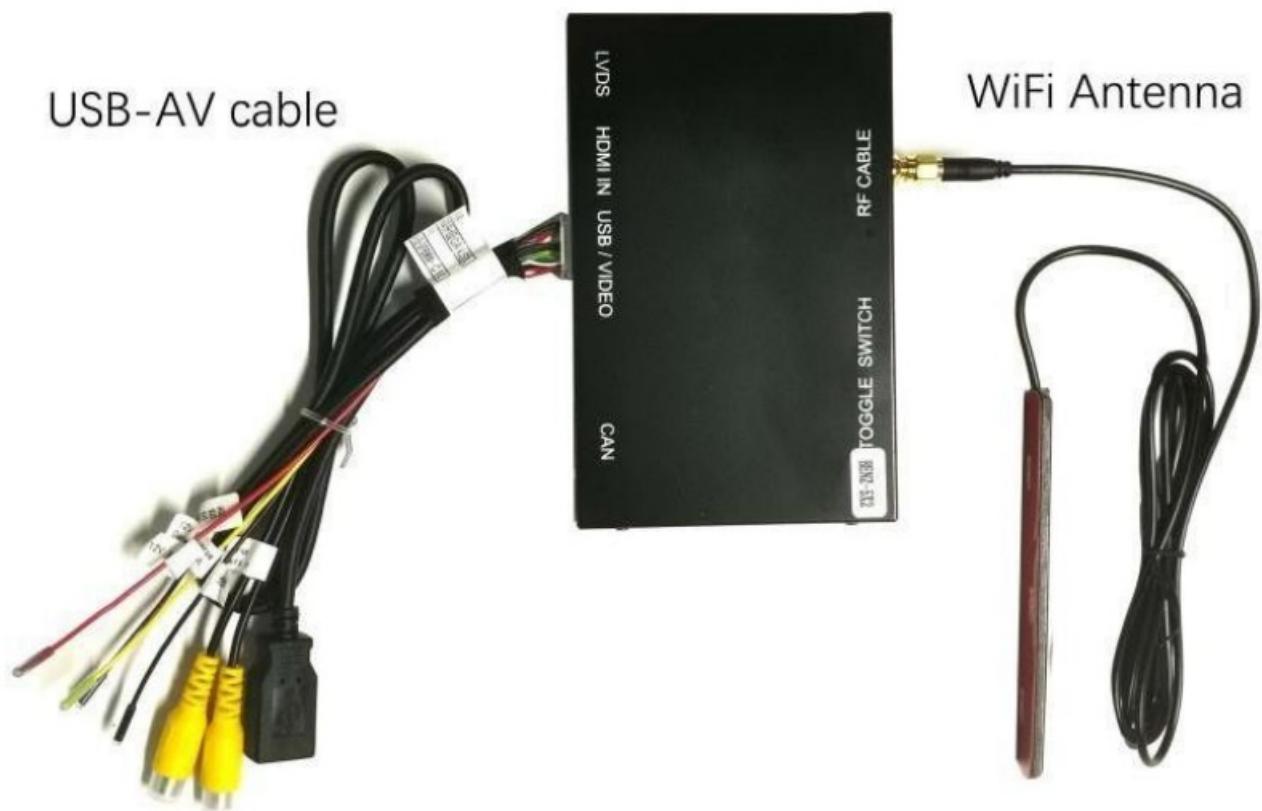
Car Model	System Switch button
For BMW	Long press 3 seconds “ MENU” button from iDrive
For Mercedes NTG4.5/4.7	Long press 3 seconds “C” button from console joystick
For Mercedes NTG5.0 (A- Class, B- C lass, CLA,GLA)	Long press 3 seconds “C” button from console joystick
For Mercedes NTG5.0 (GLC& C-Class W205)	Long press “★” button for 3 seconds form center console handwriting mouse
For Audi	Long press 3 seconds “ MENU” button from knob control
For Lexus	Long press 3 seconds “ MENU” button from knob control
For Lexus with touchpad	Long press the touchpad 3 seconds
For Porsche	Long press 3 seconds “ PHONE”“ INFO”
For Land Rover	Long press 3 seconds “NAV ”

CarPlay Decoder main interface



WiFi antenna and WiFi channel setting

Before use the CarPlay and Android Auto function, please make sure the WiFi antenna has been connected.

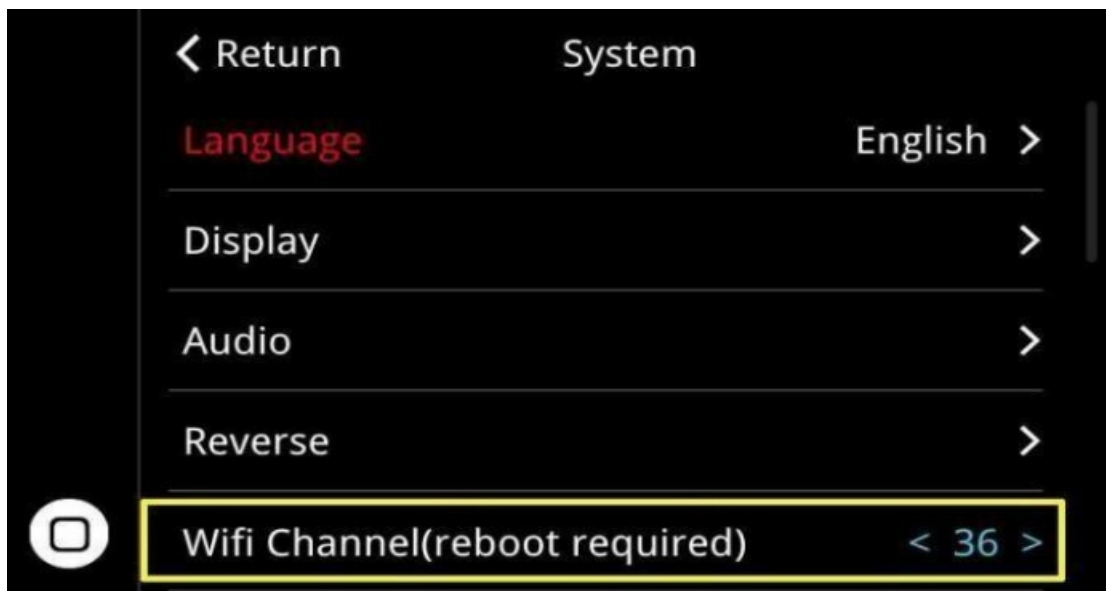


Tip: The WiFi antenna cannot be placed close to metal objects. (The WiFi signal will lost if WiFi antenna is close to the metal objects.)



Wifi Channel Setting: Click the “Setup” button from the CarPlay Decoder main interface, go into the System setting and set the WiFi Channel according to the country.

United States	6
Europe and other countries	36
China	149



Note: when change the WiFi channel, you need to reboot the CarPlay decoder box.

Wired CarPlay Connection

Step 1: Connect your iPhone to CarPlay decoder via USB cable.

Step 2: Allow your phone to use CarPlay

Step 3: Choose by Bluetooth or by USB

(Siri function will use your car voice button on steering wheel control)



Please scan the QR code, view the detail via our Nauturbo YouTube video guide on how to connect the wired CarPlay.



Wireless CarPlay Connection

- Step 1:** Open the iPhone WiFi
- Step 2:** Open the iPhone Bluetooth
- Step 3:** Search the Bluetooth of CarPlay decoder
- Step 4:** Pair the Bluetooth

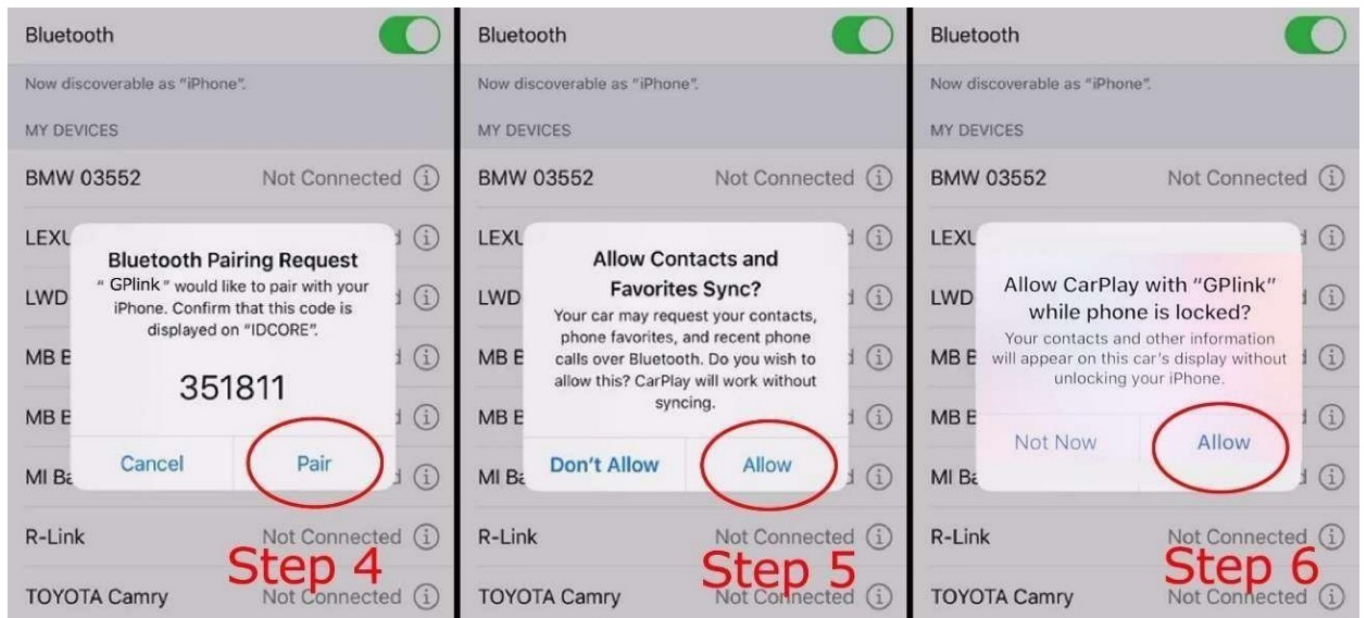
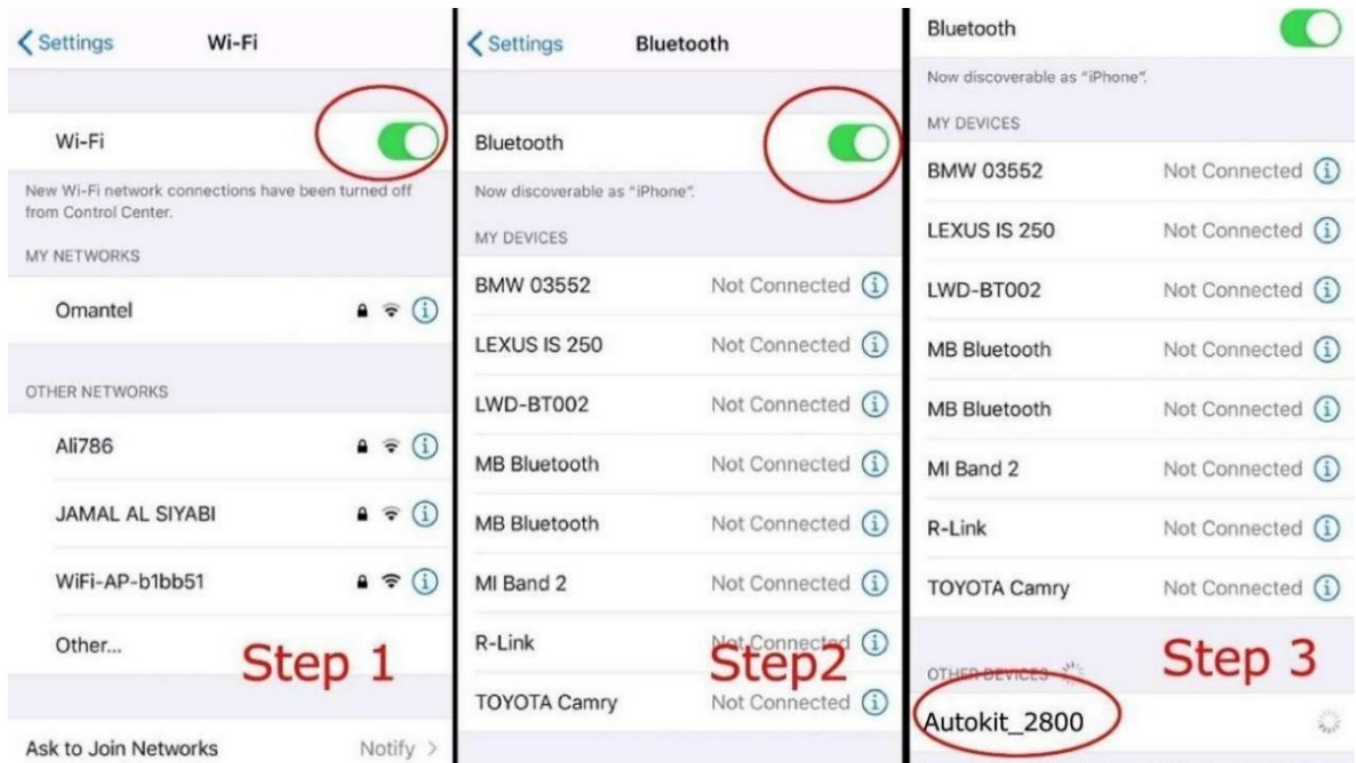
Step 5: Allow the sync

Step 6: Use CarPlay

Step 7: CarPlay logo appear on the screen

Step 8: Use the CarPlay

(Siri function will use your car voice button on steering wheel control)



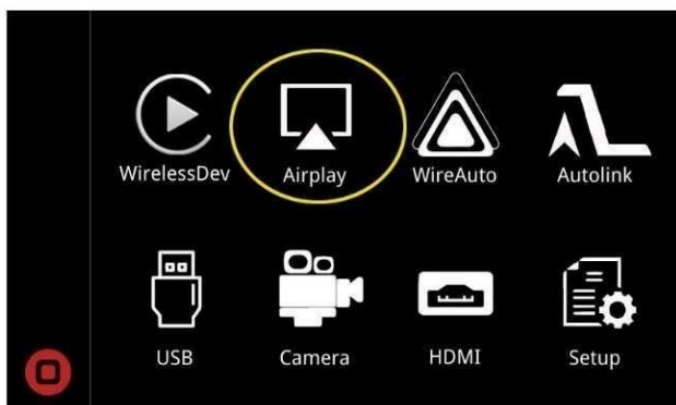


Please scan the QR code, view the detail via our Nauturbo YouTube video guide on how to connect the wireless CarPlay.



Wireless AirPlay Connection

Here will appear the prompt below after clicking AirPlay option in the main menu.



Find the corresponding SSID in mobile phone Wi-Fi, such as CarPlay4e09c9, and input the password 88888888 slide up from the lower part of the Iphone screen and select AirPlay in the menu option to finish the wireless AirPlay connection.

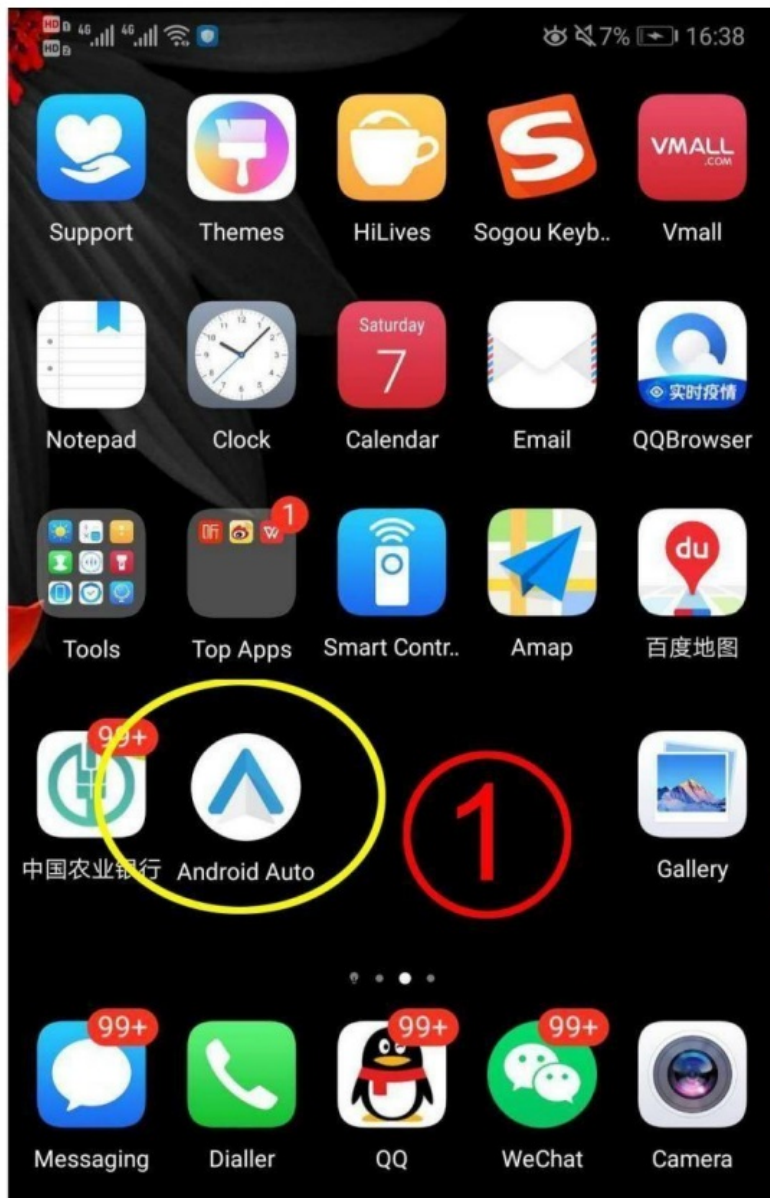


Please scan the QR code, view the detail via our Nauturbo YouTube video guide on how to connect the wireless AirPlay.



Wired Android Auto Connection

Step 1 require your android phone to install the Android Auto software.
Please make sure to connect your android phone USB cable to USB cable of CarPlay decoder, as showed in step 3.



Please scan the QR code, view the detail via our Nauturbo YouTube video guide on how to connect the wired Android Auto.



Wireless Android Auto Connection

Before use the wireless android auto function, please make sure your android phone support wireless android auto function.

Up to now, there are Samsung and Google mobile phone support wireless android auto, the detail mobile models are showed as below.

Samsung S8, S9, S10, Note 8, Note 9, Note 10 (Android system require Android 9 or above, Android Auto software require 4.7 version or above).

Google Pixel, Nexus 5x, Nexus 6p, (Android system require Android 8 or above, Android Auto software require 3.1 version or above).

(about wireless android auto function, for more detail about a compatible phone and country , please view the website by www.android.com/auto/)

Wireless Android Auto Connection steps:

Step 1: It require your android phone to install the Android Auto software.

Step 2: It require your android phone in the English language.

Step 3: Open the Android phone's Wi-Fi

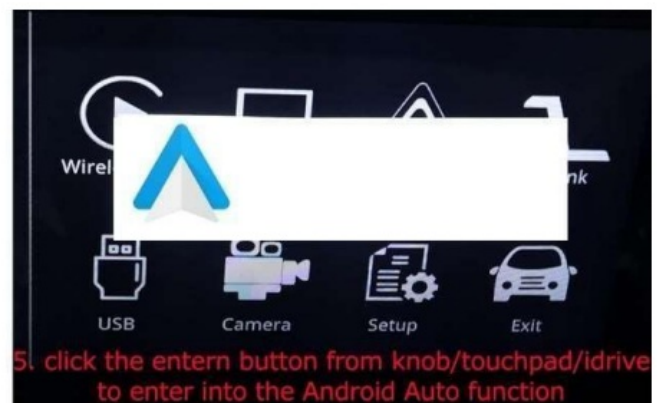
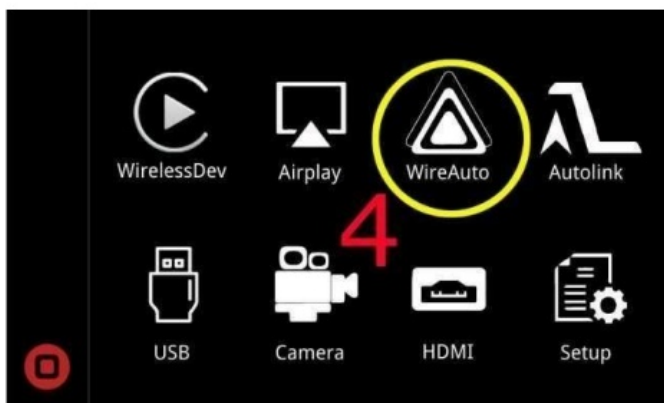
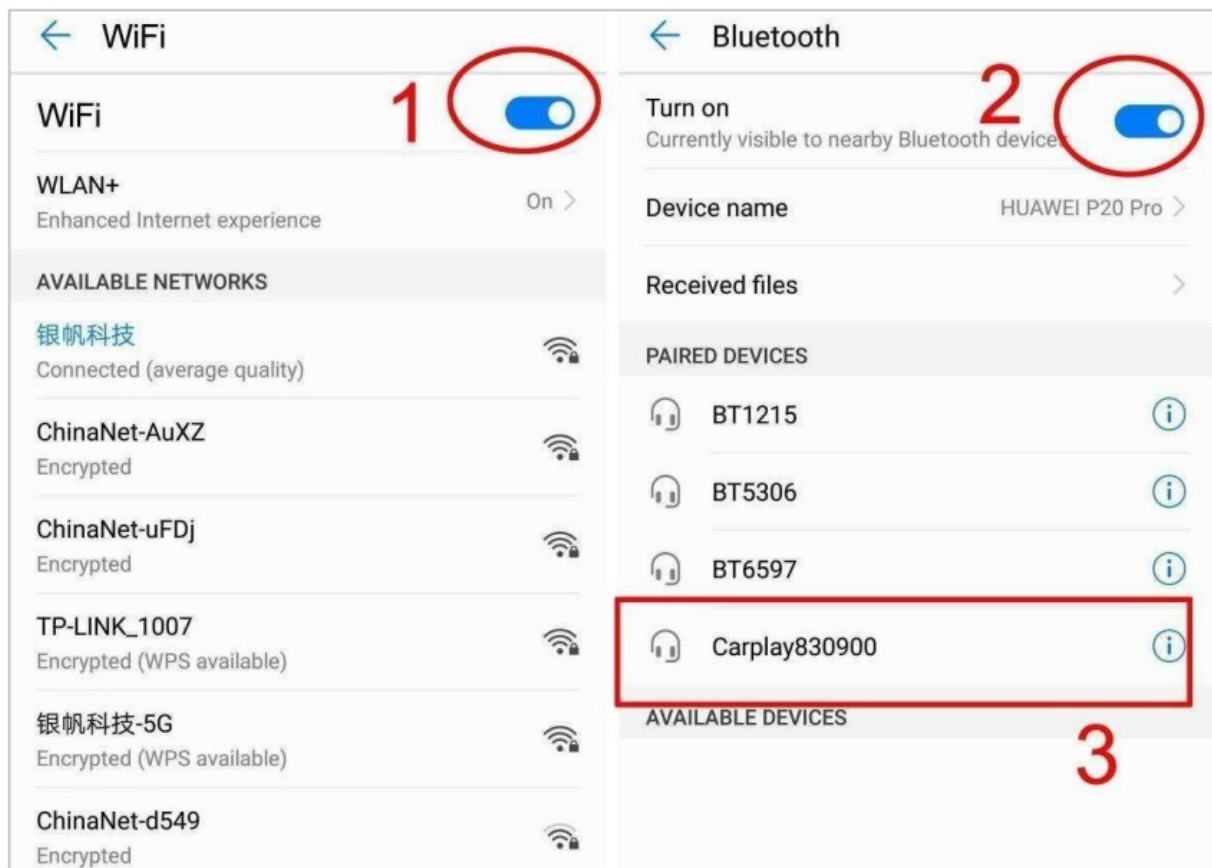
Step 4: Open the Android phone's Bluetooth

Step 5: Search the Bluetooth of CarPlay decoder, likeCarPlay830900.

Step 6: Pair the Bluetooth

Step 7: Click the Android Auto button in the decoder main menu to enter into the wireless Android Auto function.

Step 8 when the car screen shows you the Android Auto logo, click the enter button from your car knob / touchpad / remote touch to enter into the Android Auto function.



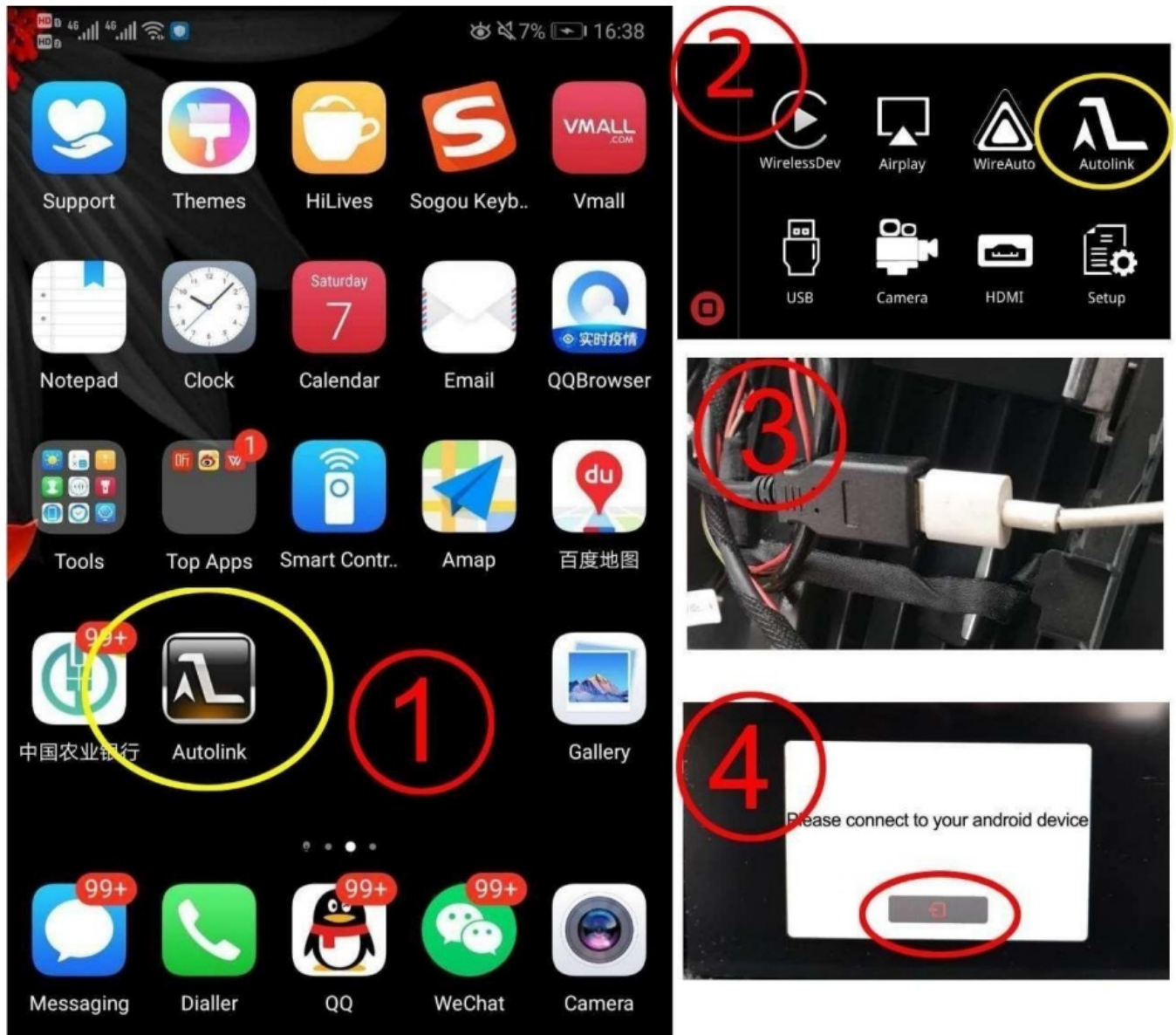
Please scan the QR code, view the detail on our Nauturbo YouTube video guide on how to connect the wireless Android Auto.



Wired Autolink

Step 1 require your android phone to install the Auto link software.

Please make sure to connect your android phone USB cable to USB cable of CarPlay decoder, as showed in step 3



Please scan the QR code, view the detail on our Nauturbo YouTube video guide on how to connect the wired Autolink.



Youtube

Step 1: Select and enter Youtube on the car terminal

Step 2: Search for wifi on the car terminal

Step 3: Connect to the car terminal and search for wifi

Step 4: After the car terminal is connected to wifi, select "Youtube Start" with the blue cursor

Step 5: Connect the car terminal to wifi After success, enter the account and log in to the QR code (YouTube subscription function)

Step 6: Open Google Chrome on the mobile phone, open the camera to scan the QR code on the car side

Step 7: Click on the mobile phone and enter "google.com/device", web page

Step 8: Mobile Enter the random number of "user code" in the QR code interface of the car terminal

Step 9: Log in to the Google account on the mobile terminal

Step 10: Access the Google account on the mobile terminal GVideo and select "Allow"

Step 11: The mobile terminal prompts that the device is successfully connected

Step 12: The car terminal confirms key to enter the YouTube function ("Subscribe" in the upper right corner can be a favorite video)



Youtube operation method: You need to use the left and right function buttons from the left category bar to the right video content, and you need to use the up and down function buttons to search and subscribe from the video content to the top.

Setting

Click the “Setup” button from the CarPlay Decoder main interface, go into the setting.

Items	Parameter	Default setting
Language	English, Italian, Spanish, Turkish, etc.	English
Display	Brightness, Contrast, Saturation, Hue	Brightness, etc.
Audio	Volume	17
	EQ	Standard
	Loudness	Off
	Mic Echo PreConfig	Default
	Microphone Volume	18
	Microphone preamp (OP)	4
	Microphone preamp (PGA)	24
	Microphone Delay	0
	AEC quality	1
Reverse	Reverse camera	Aftermarket camera
	Reverse line detection	Off
	Reversing display track (Aftermarket 360 camera, please choose Off)	On
	Reversing display Radar (Aftermarket 360 camera, please choose Off)	On
	Front View Time	0-15
	Reverse match original	Standard
WiFi channel	6 (for USA),36 (for Europe and others countries) ,149 (for China)	36
Right hand drive	Right hand drive or Left-hand drive	Off
Switch L/R key to D/U key	Switch Left /Right key to Down/Up key	Off
Back switch display	“back” button and “menu” button interchangeable	Off
CarPlay left scrap	Adjust parameters on the left side of the screen	0
CarPlay right scrap	Adjust parameters on the right side of the screen	0
Software update	System update, MCU update, Logo Image Updates, CarPlay Icon Update	No
System version	System version	System version

Contact US

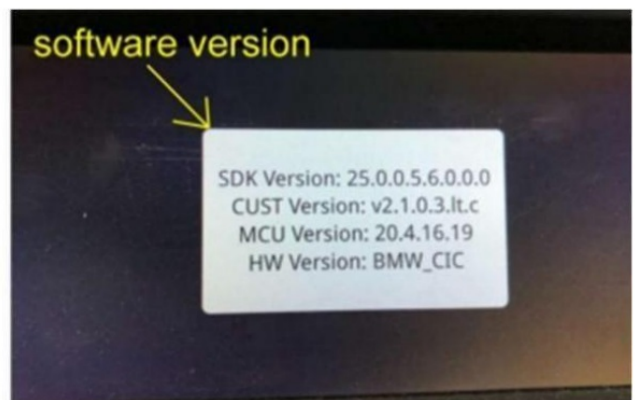
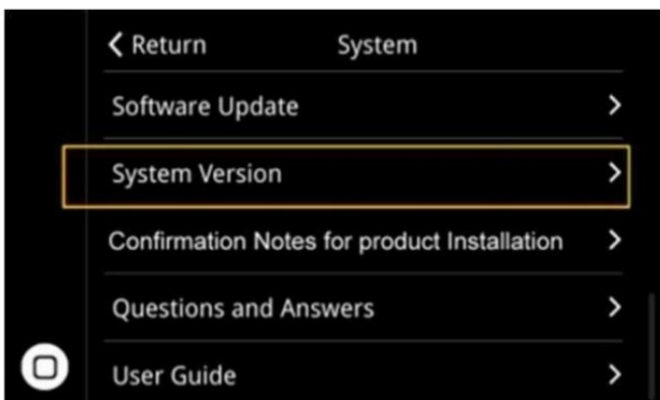
Please contact us via the purchase platform or the WhatsApp if you need any help.



Tip:

before contacting us, please help us to collect the following information.

1. the order ID
2. the car model
3. the year of the car
4. screen size of the car
5. the toggle switch setup
6. pictures about the LVDS cable connection
7. the software version (in the CarPlay decoder menu, enter into the "Setting", choose the "System Version", you will see the software version.)



FCC Statement

This equipment has been tested and found to comply with the limits for a Class B digital device, pursuant to part 15 of the FCC rules. These limits are designed to provide reasonable protection against harmful interference in a residential installation. This equipment generates, uses and can radiate radio frequency energy and, if not installed and used in accordance with the instructions, may cause harmful interference to radio communications. However, there is no guarantee that interference will not occur in a particular installation. If this equipment does

cause harmful interference to radio or television reception, which can be determined by turning the equipment off and on, the user is encouraged to try to correct the interference by one or more of the following measures: - Reorient or relocate the receiving antenna. - Increase the separation between the equipment and receiver. - Connect the equipment into an outlet on a circuit different from that to which the receiver is connected. - Consult the dealer or an experienced radio/TV technician for help. To assure continued compliance, any changes or modifications not expressly approved by the party.

Responsible for compliance could void the user's authority to operate this equipment. (Example- use only shielded interface cables when connecting to computer or peripheral devices).

This equipment complies with Part 15 of the FCC Rules. Operation is subject to the following two conditions:

1. This device may not cause harmful interference, and
2. This device must accept any interference received, including interference that may cause undesired operation.

FCC Radiation Exposure Statement:

The equipment complies with FCC Radiation exposure limits set forth for uncontrolled environment. This equipment should be installed and operated with minimum distance 20cm between the radiator and your body.

Customer Support

Firmware update required please follow Our Facebook Page.
Please scan this QR code.

Facebook Page



Welcome to join our group to share your experience and know more about us.


Please scan this QR code.

Facebook Group




Nauturbo

Documents / Resources

	<p>Nauturbo ZTCP66-NBT Car Play and Android Auto [pdf] User Guide 2BC6J-ZTCP66-NBT, 2BC6JZTCP66NBT, ZTCP66-NBT, ZTCP66-NBT Car Play and Android A uto, Car Play and Android Auto, Play and Android Auto, Android Auto</p>
---	---

References

-  [Android Auto | Android](#)
- [User Manual](#)