




## natec Harrier 2 Wireless Mouse User Guide

[Home](#) » [natec](#) » natec Harrier 2 Wireless Mouse User Guide 



### Contents

- [1 INSTALLATION](#)
- [2 SAFETY INFORMATION](#)
- [3 REQUIREMENTS](#)
- [4 WARRANTY](#)
- [5 GENERAL](#)
- [6 Documents / Resources](#)
  - [6.1 References](#)
- [7 Related Posts](#)

## INSTALLATION

### Pairing a new device with mouse in Bluetooth mode

- Move the ON/OFF switch located at the bottom of the mouse to ON position.
- Turn ON Bluetooth in device which you want to pair with the mouse.
- Use the button for changing the channel located on the bottom of the mouse, select the channel BT1 or BT2 and then hold down the same button for about 5 seconds to enter into pairing mode. The LED diode will start flashing rapidly.
- Then go to the Bluetooth settings on your device and select from the list of mouse Natec Harrier 2.
- After successful pairing, the LED on the mouse will stop flashing and will turn off after a while.
- The mouse is ready for use.

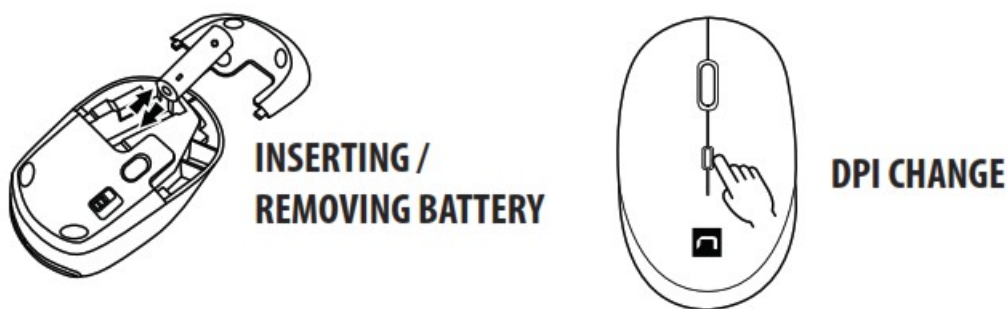
## Connecting the mouse with the previously paired device

- Turn ON Bluetooth on your device that you have previously paired with the mouse.
- Turn ON or wake up the from hibernation.
- The mouse will automatically connect with the device.

### Note:

- The device is equipped with intelligent technology for energy management. When the mouse enter into hibernation (sleep) mode, press any button of the mouse for its revival.
- The mouse is equipped with an ON/OFF switch to save the battery power when not in use for longer period.

Frequency band: 2402 MHz 2480 MHz Maximum radio-frequency power: 3,40 dBm



## SAFETY INFORMATION

- Use as intended, improper usage may break the device.
- Non-authorized repairs or disassembly voids the warranty and may damage the product.
- Dropping or hitting the device may lead to device being damaged, scratched or flawed in other way.
- Do not use the product in low and high temperatures, strong magnetic fields and damp or dusty surroundings.

## REQUIREMENTS

- PC or compatible device with a USB port
- Windows® 7/8/10/11, Linux, Android

## WARRANTY

2 years limited manufacturer warranty

## GENERAL

- The safe product, conforming to the EU requirements.
- The product is made in accordance with RoHS European standard.
- The WEEE symbol (the crossed-out wheeled bin) using indicates that this product in not home waste. Appropriate waste management aids in avoiding consequences which are harmful for people and environment and result from dangerous materials used in the device, as well as improper storage and processing.

Segregated household waste collection aids recycle materials and components of which the device was made.  
In order to get detailed information about recycling this product please contact your retailer or a local authority.

- Hereby, IMPAKT S.A. declares that that the radio equipment type NMY-1960, NMY-1961, NMY-1962, NMY-1963 is in compliance with Directives 2014/53/EU, 2011/65/EU and 2015/863/EU. The full text of the EU declaration of conformity is available via the product tab at [www.impakt.com.pl](http://www.impakt.com.pl).



## Documents / Resources

	<a href="#">natec Harrier 2 Wireless Mouse</a> [pdf] User Guide Harrier 2 Wireless Mouse, Harrier 2, Wireless Mouse, Mouse
--	---

## References

- [📄 Producent i dystrybutor sprzętu IT | IMPAKT S.A.](#)