



Narvitech NJ300 HDMI Game Capture Box and Play Switch User Manual

[Home](#) » [Narvitech](#) » Narvitech NJ300 HDMI Game Capture Box and Play Switch User Manual 

Contents

- [1 Narvitech NJ300 HDMI Game Capture Box and Play Switch](#)
 - [1.1 Download and install](#)
 - [1.2 Settings](#)
- [2 Help](#)
 - [2.1 Support](#)
- [3 Documents / Resources](#)
 - [3.1 References](#)
- [4 Related Posts](#)



Narvitech NJ300 HDMI Game Capture Box and Play Switch



How to use NJ300 HDMI Game Capture Box and play Switch through Screen Recorder 4 in 1 minute



Screen Recorder 4 included with the NJ300 is a full-featured, easy-to-use live streaming software. In addition, it can also be used as a playback software for Switch on PC/laptop. (PS5, XBOX also applicable)

1. The software only supports Windows 10, 8.1, 7 SP1 (64-bit Windows 10 is recommended)
2. The included Screen Recorder 4 cannot be updated with the official version of Cyberlink.
3. The following is the instruction of “After the NJ300 HDMI Capture Box is connected to the PC/ laptop and Switch through the hardware connection”, please refer to the NJ300 QSG for the hardware connection.

Download and install

First, go to Narvitech’s official website, then go to Support Center > Download Area > NJ300 > Software to find the download link: Cyberlink Screen Recorder 4

NJ300

Software

[CyberLink PowerDirector 15](#)

Update date : 2019/04/22

[CyberLink Screen Recorder 4](#)

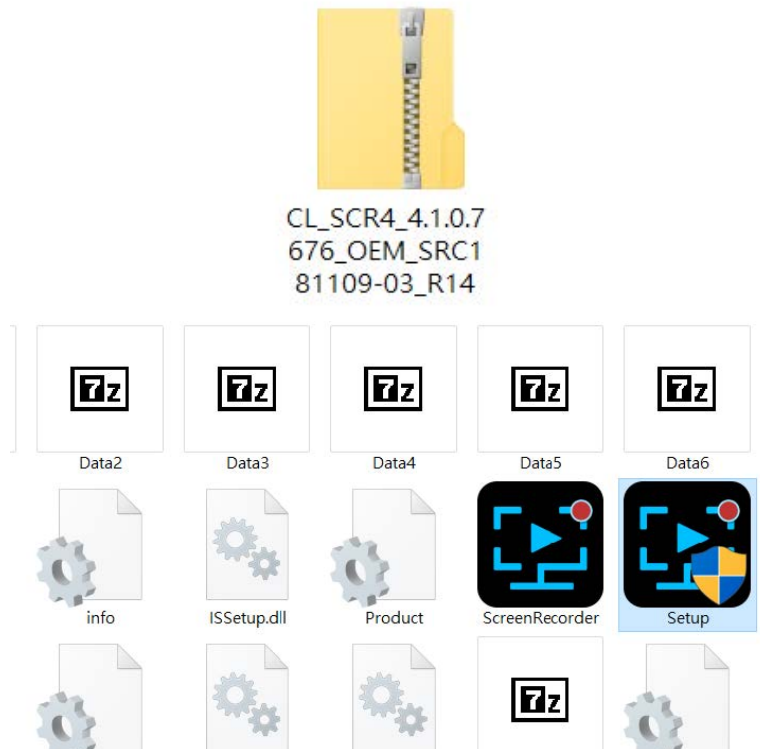
Update date : 2021/02/02

[NarviTech Party Chat Controller](#)

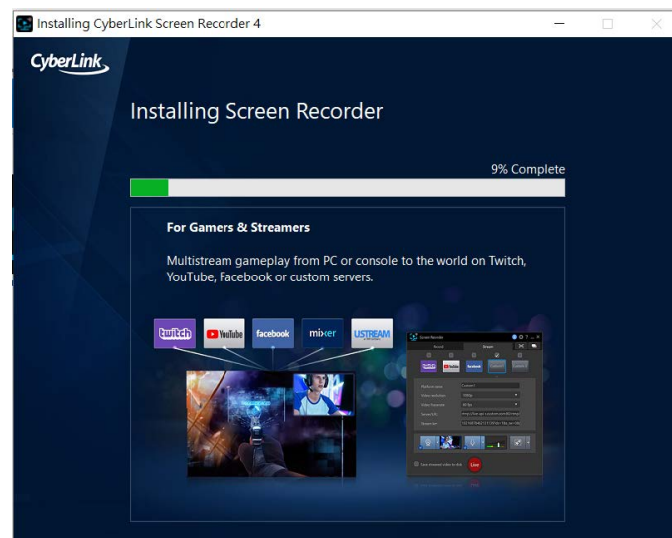
Update date : 2020/11/27

Document

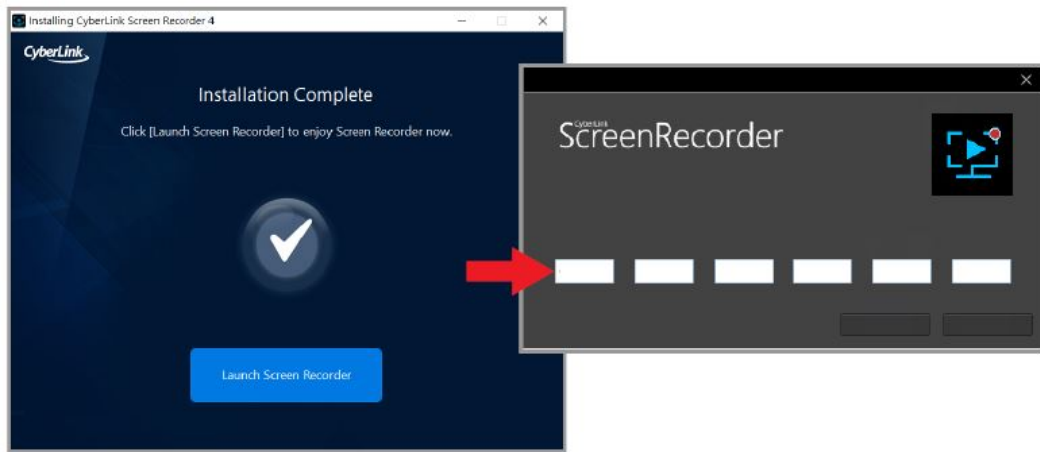
After the download is completed, unzip the download file and click on the folder to open the “Setup” application



Open the program, select the language and storage location and start the installation.

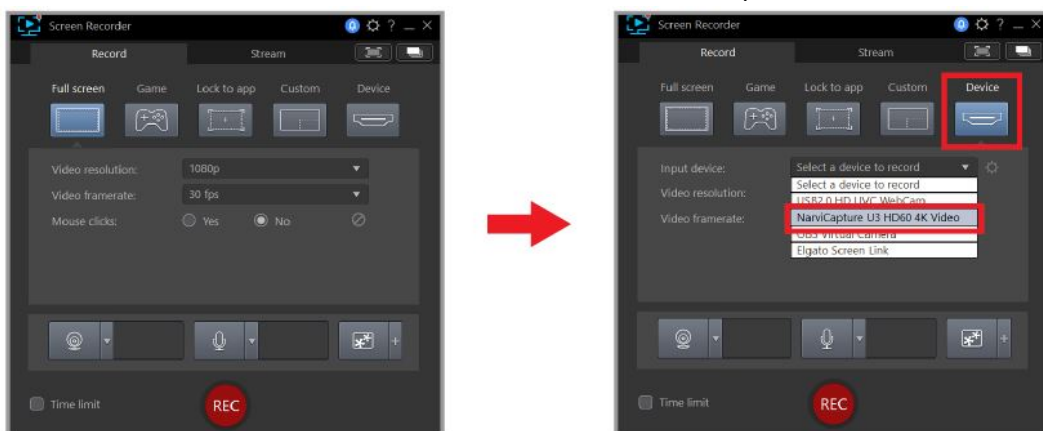


After the installation is completed, enter the serial number to activate the program.

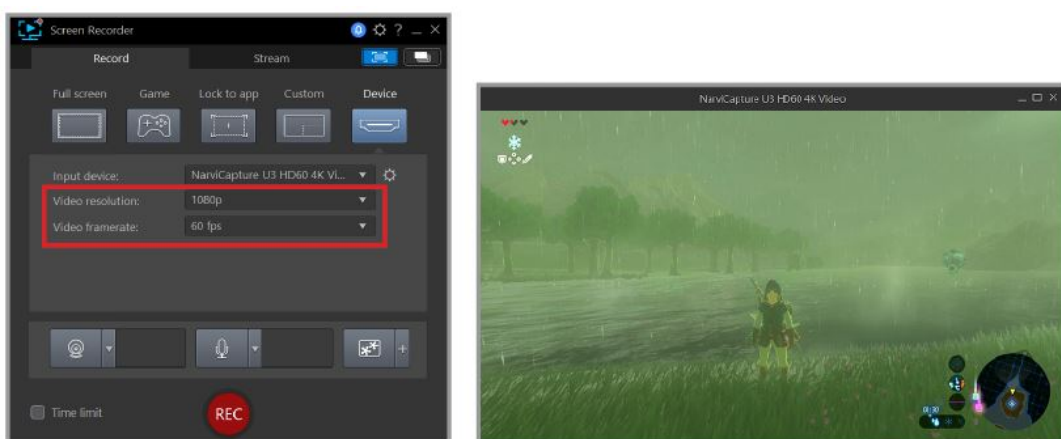


Settings

After the installation is completed and the serial number is entered, open Screen Recorder 4 to enter the interface as shown below, then click Device > Select the device to record > NarviCapture U3 HD60 4K Video



After selecting the input device, the Switch screen window will pop out, the screen resolution and frame rate can be adjusted in the red frame.



Then set the sound, click on the top right corner

1. Gear (Preferences) > Audio >
2. Input Device: Digital Audio Interface (NarvitCapture U3 HD60 4K Video) >
3. Volume Control Button.



After the volume is set, you can play the Switch to your heart's content!

1. Drag the volume control of the on-screen window to adjust the volume.
2. When the window is zoomed to the maximum, there is still a border, please pay attention.



Help

Support

You can go to Narvitech's official website for the latest updates on the product and also support information.
Official website: <https://Narivtech.com> Support page: <https://narvitech.com/home/support-center/>

Contact Us

You can also contact us via the following information, so we can provide the assistance you need. Contact us on:
<https://narvitech.com/home/contact-us-2/> E-mail: Supprot@Narvitech.com

Blog

You can visit Narvitech's Blog to find out more information and resource.

Documents / Resources



How to use NJ300 HDMI Game
Capture Box and play Switch
through Screen Recorder 4 in 1
minute



[Narvitech NJ300 HDMI Game Capture Box and Play Switch](#) [pdf] User Manual
NJ300 HDMI Game Capture Box and Play Switch, NJ300, HDMI Game Capture Box and Play
Switch

References

- [Contact Us – Narvitech](#)
- [Support Center – Narvitech](#)

Manuals+.