

Narpult B0CHRX7G6X Smart Lock with Front Door Handle Set



# Narpult B0CHRX7G6X Smart Lock with Front Door Handle Set Instruction Manual

[Home](#) » [Narpult](#) » Narpult B0CHRX7G6X Smart Lock with Front Door Handle Set Instruction Manual 

## Contents

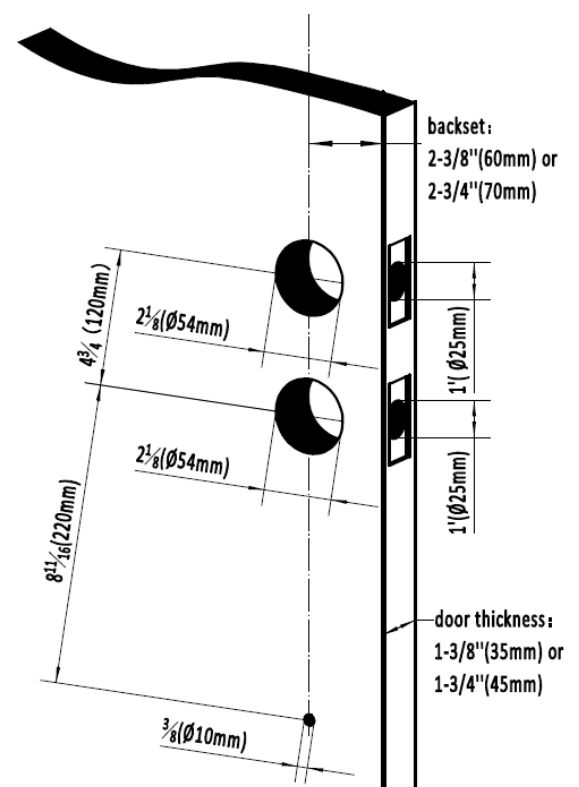
- [1 Narpult B0CHRX7G6X Smart Lock with Front Door Handle Set](#)
- [2 INSTALLATION INSTRUCTIONS OF KEYPAD DIGITAL DEADBOLT](#)
- [3 INSTALLATION INSTRUCTIONS OF HANDLESET](#)
- [4 OPERATIONS BY APP VIA BLUETOOTH](#)
- [5 Operation by keypad](#)
- [6 More function](#)
- [7 Documents / Resources](#)
  - [7.1 References](#)
- [8 Related Posts](#)

# Narpult

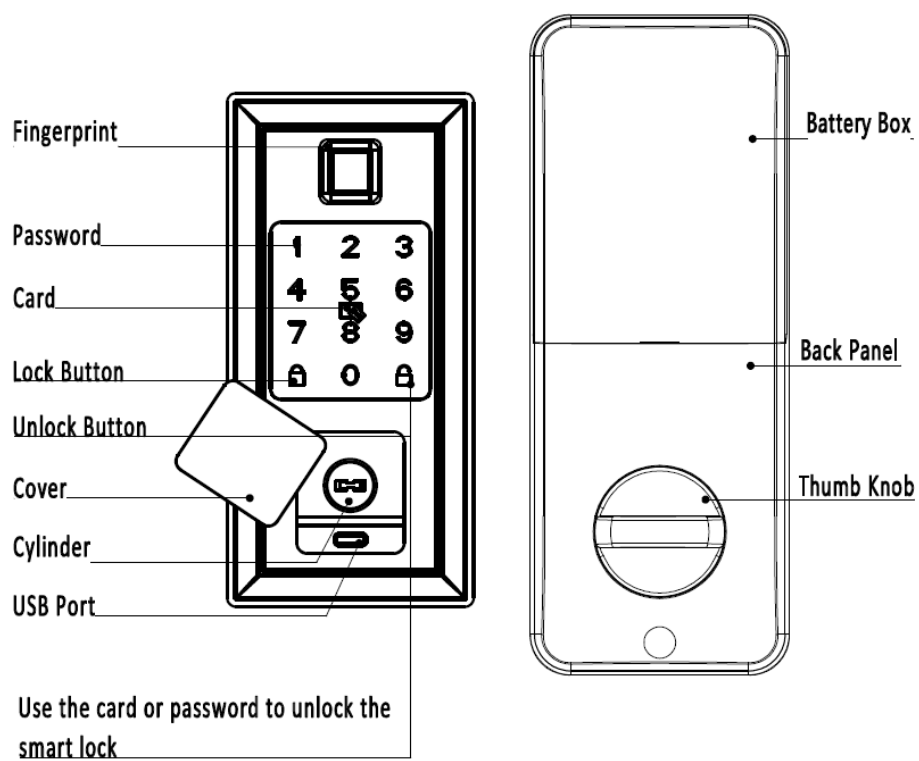
Narpult B0CHRX7G6X Smart Lock with Front Door Handle Set



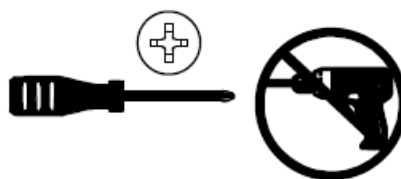
Before Installing the Lock, Please Check Door Jamb and Door Preparation.



## INSTALLATION INSTRUCTIONS OF KEYPAD DIGITAL DEADBOLT



#### Tool Required:

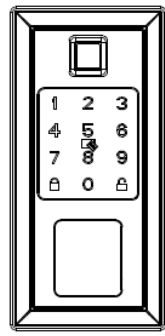


Do not use an electric screwdriver during installation.

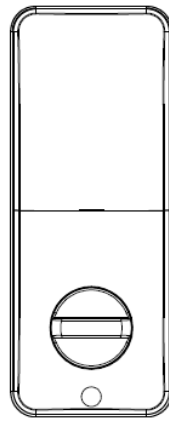
**Important:** Do not load batteries until lock is completely installed.

Thank you for purchasing our products. Please review this manual thoroughly before operating your device. All pictures in this manual are for illustration purpose only. Actual product may vary due to product upgrade.

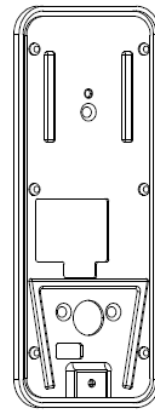
#### INCLUDED IN THE BOX



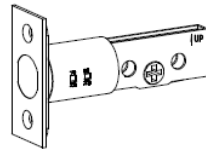
1 Pcs  
Front Panel



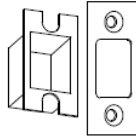
1 Pcs  
Back Panel



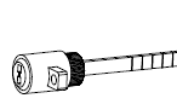
1 Pcs  
Mounting Plate



1 Pcs  
Latch



1 Pcs  
Strike Plate



1 Pcs  
Cylinder



2 Pcs  
Backup Keys



5 Pcs  
Screw A



1 Pcs  
Screw B



1 Pcs  
Screw C



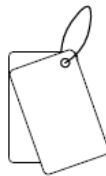
1 Pcs  
Screw D



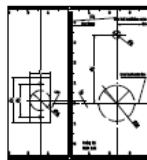
3 Pcs  
Screw E



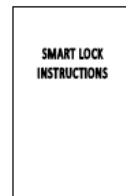
3 Pcs  
Solenoid F



4 Pcs  
Cards



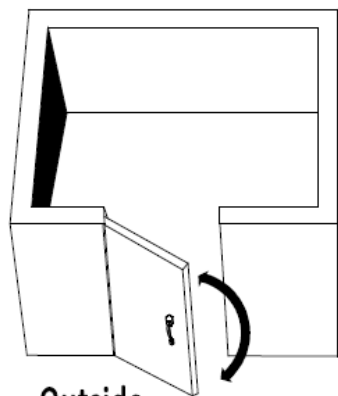
1 Pcs  
Opening Hole Drawing



1 Pcs  
Lock Manual

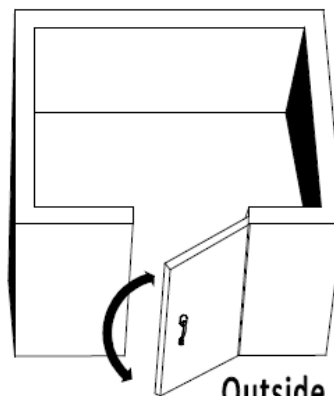
## PREPARING TO INSTALL

Open to Left



Outside

Open to Right

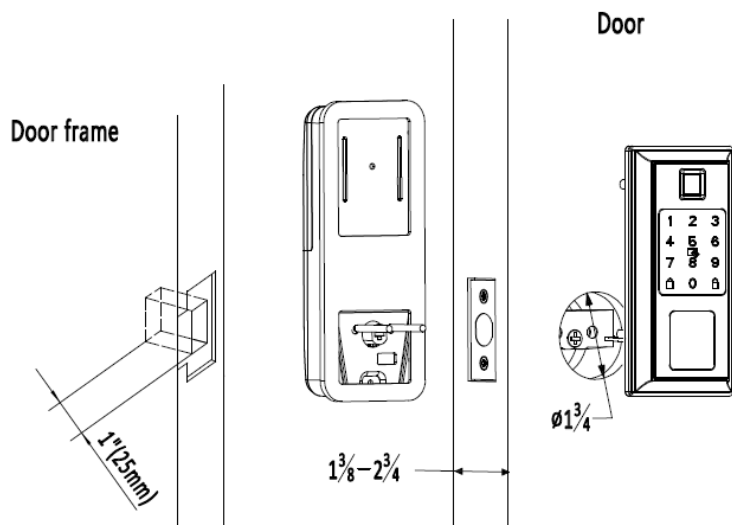


Outside

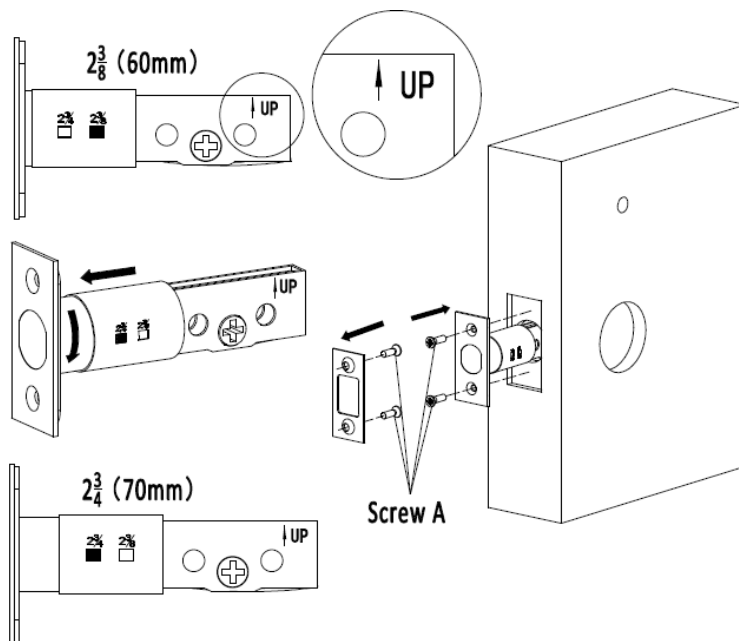
Disassemble your existing deadbolt from the door.

## STEP 1: PREPARATION

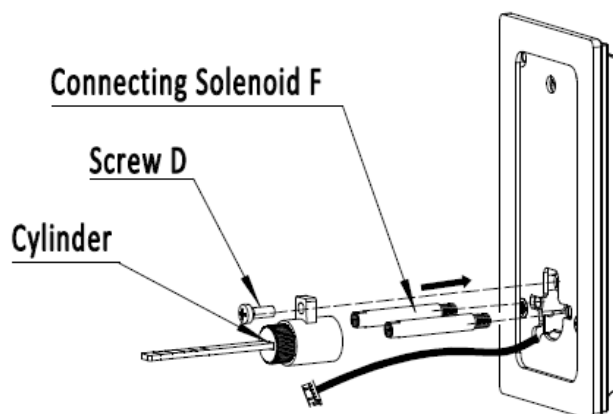
Check the door's dimensions.



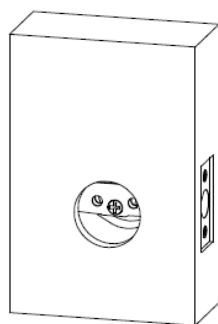
## STEP2: INSTALLING LATCH AND STRIKE PLATE



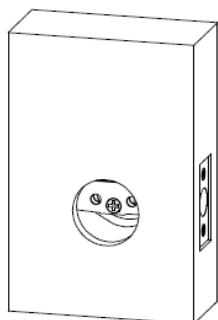
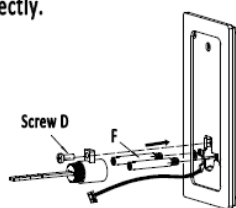
## STEP3 PREPARING KEYPAD:



**Remark: There are 3 ways to install keypad**

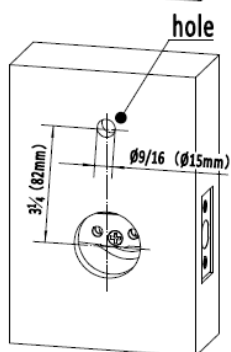
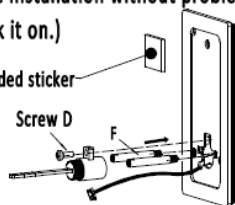


1.No need to drill holes, just install keypad directly.

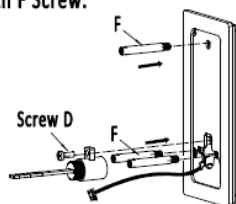


2.No need to drill holes, reinforced with 3M double-sided sticker.(Warm Notice: double-sided sticker is difficult to tear down and clean up after the paste, so please confirm the installation without problems before stick it on.)

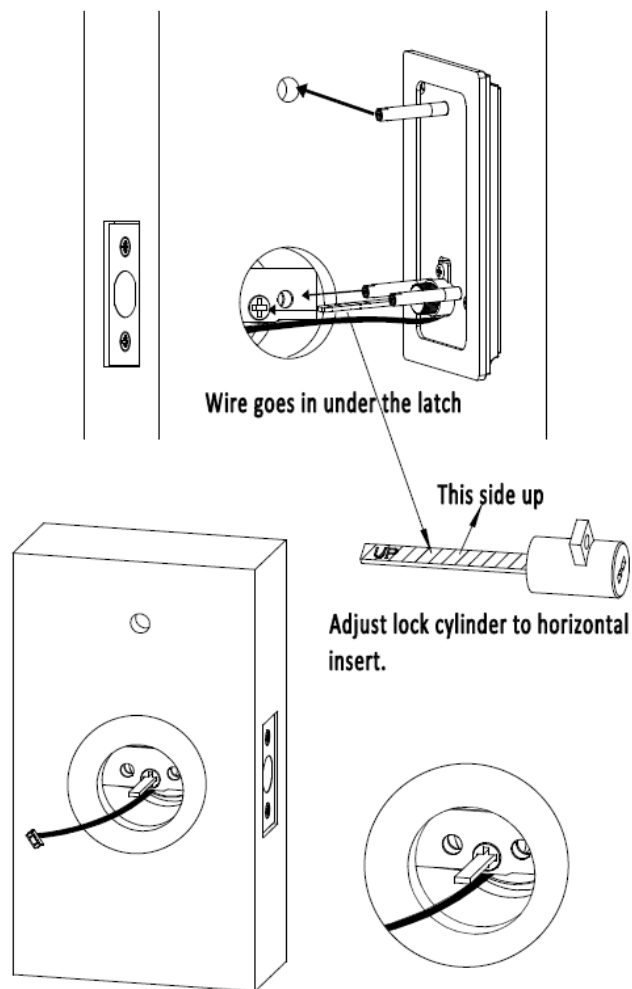
3M double-sided sticker



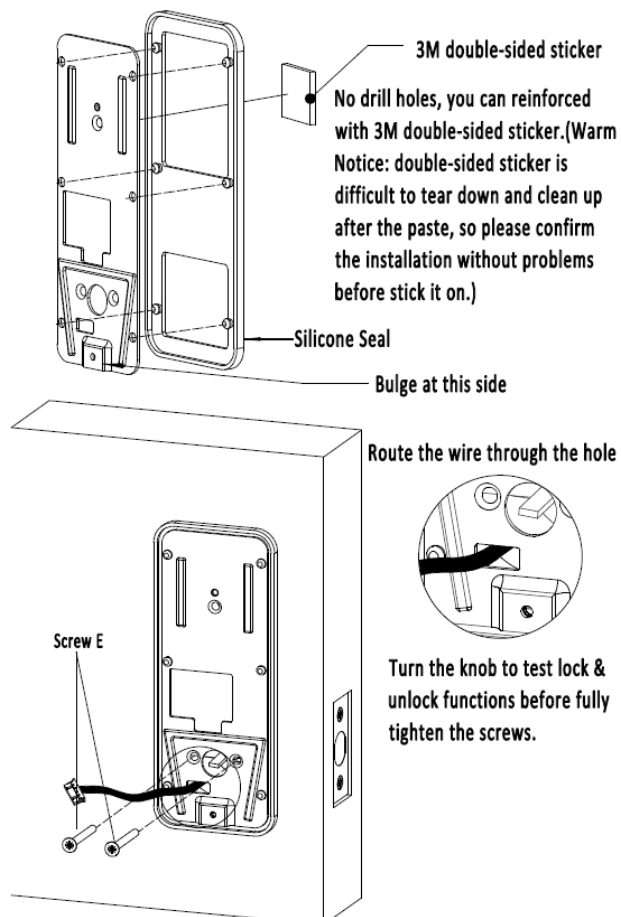
3.Need to drill hole on the door, reinforced with F Screw.



#### STEP4 INSTALLING KEYPAD

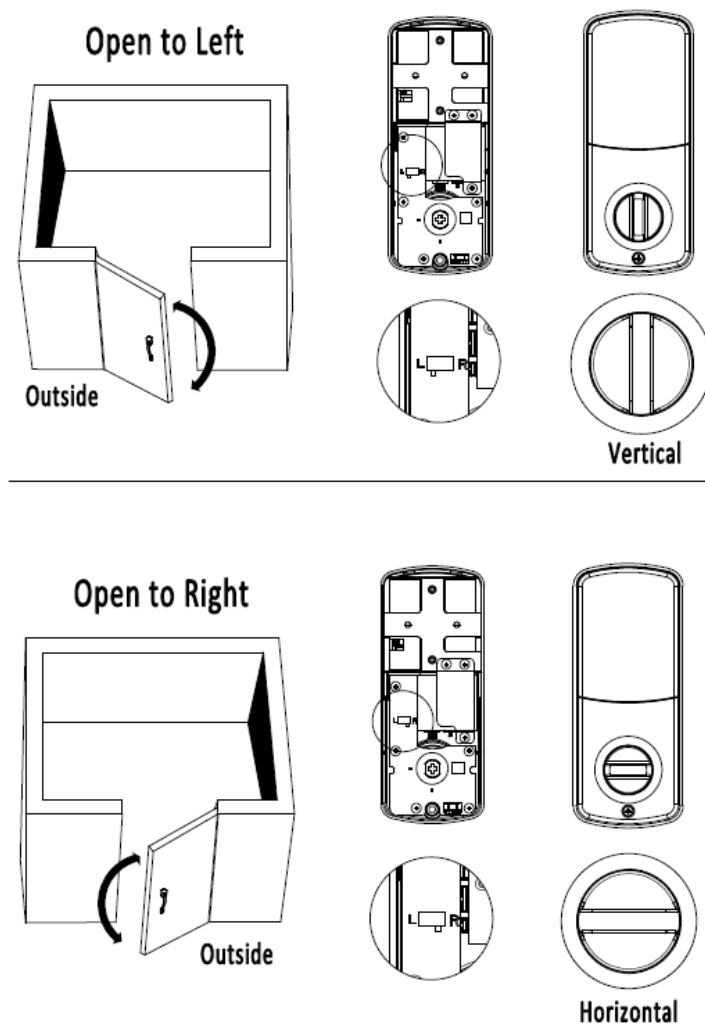


## STEP 5: INSTALLING MOUNTING PLATE

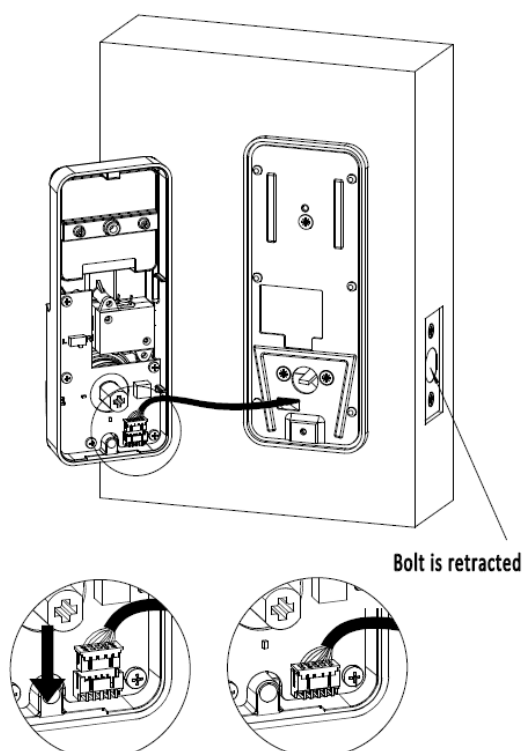


## STEP 6: PREPARING INTERIOR ASSEMBLY

Make sure the switch and the knob are set to correct door handing.

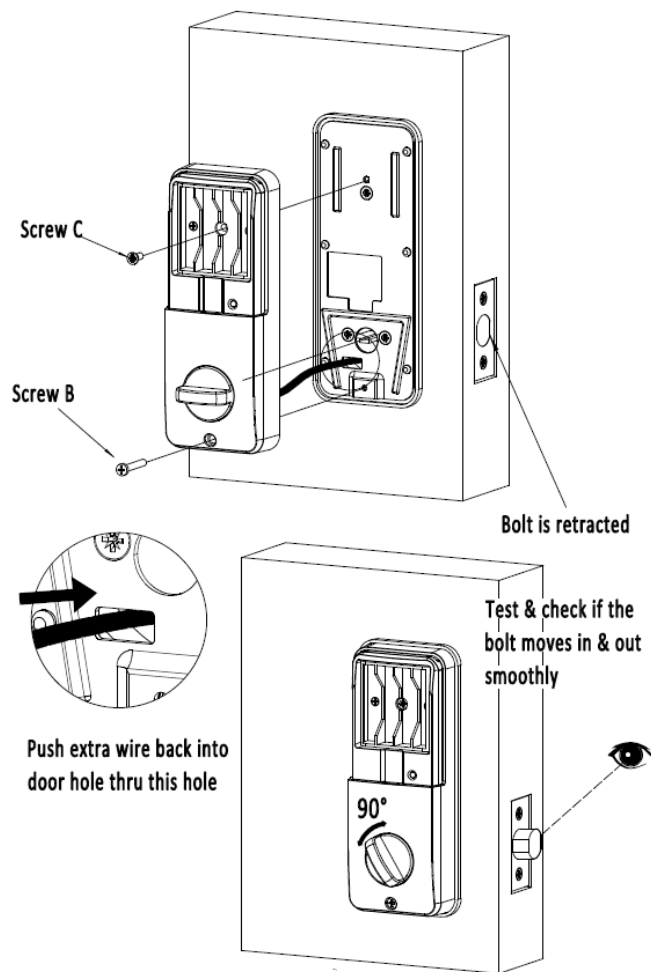


## STEP 7: CONNECT THE CABLE



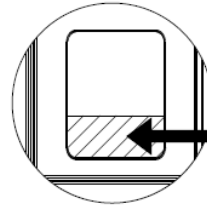
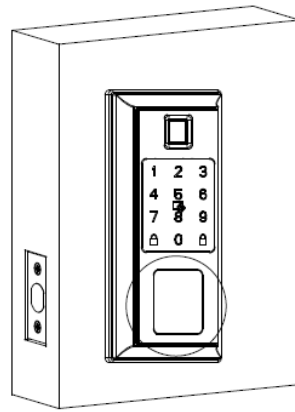


## STEP 8: INSTALLING INTERIOR ASSEMBLY AND TESTING

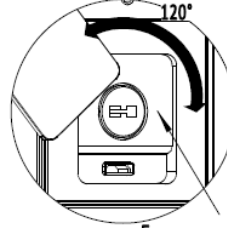


## STEP 9: BACK UP KEY TESTING

Press the bottom side of the cover

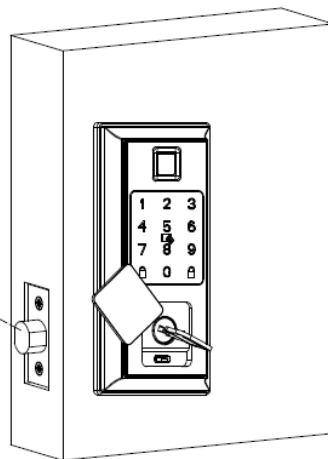


anti-clockwise rotate 120 degree

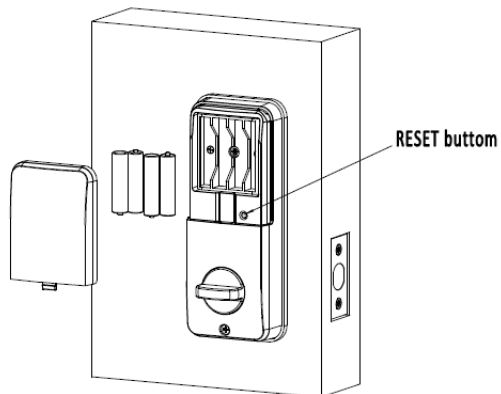


Emergency power

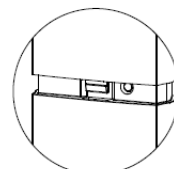
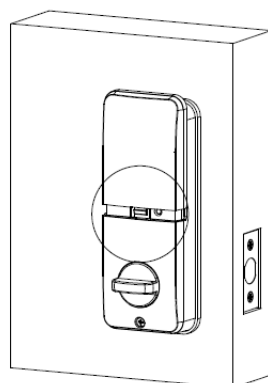
Test & check if the bolt moves in & out smoothly



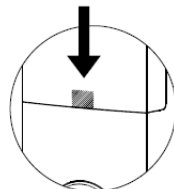
## STEP 10: INSTALLING BATTERIES & COVER



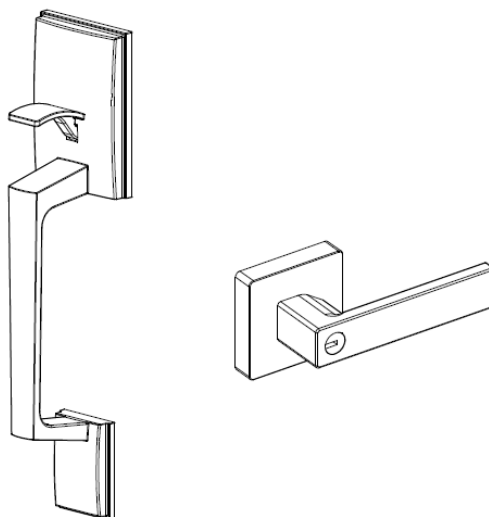
RESET button





Slide the cover on

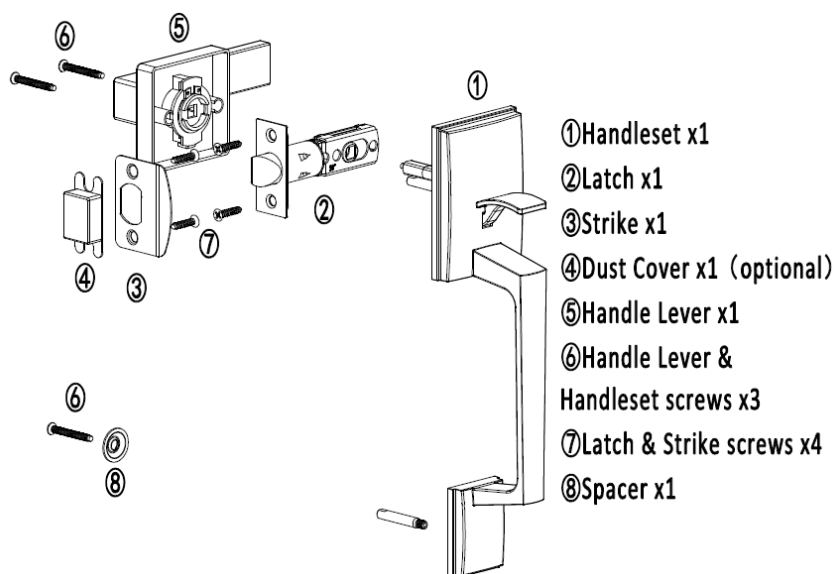


## INSTALLATION INSTRUCTIONS OF HANDLESET

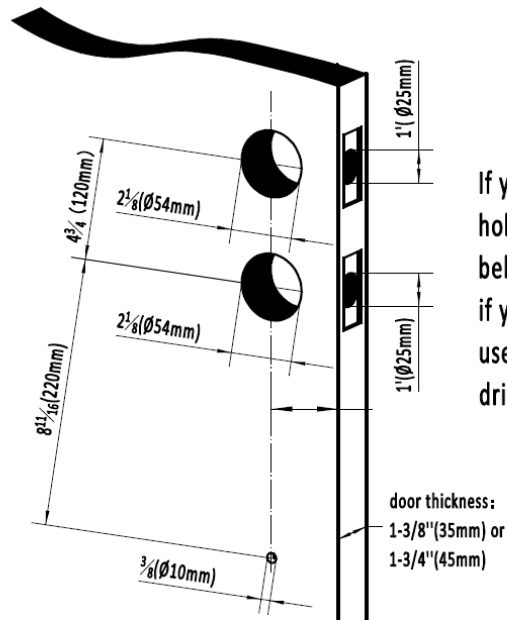


You Will Need	
	
Screwdriver	Tape measure

1. Handleset xl
2. Latch xl
3. Strike xl
4. Dust Cover xl (optional)
5. Handle Lever xl
6. Handle Lever & Handleset screws x3
7. Latch & Strike screws x4
8. Spacer x 1



1. Prepare the door and check dimensions.

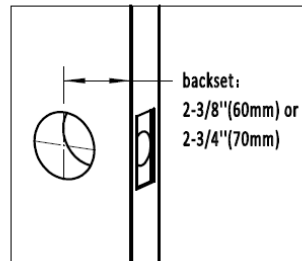
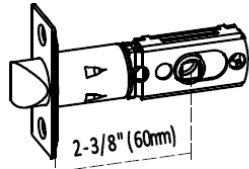


If your door already has the holes shown in the picture below, proceed to the next step, if your door does not have holes, use the mounting template to drill a new hole.

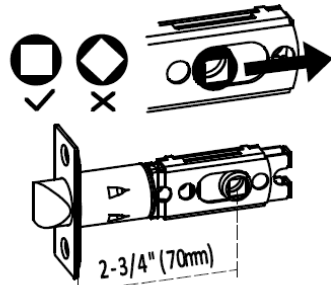
## 2. Latch backset adjustment

A. If the backset of your door is 2-3/8" (60mm), no need to adjust the latch

A. If the backset of your door is 2-3/8" (60mm), no need to adjust the latch



B. If the backset of your door is 2-3/4" (70mm), please adjust the latch.



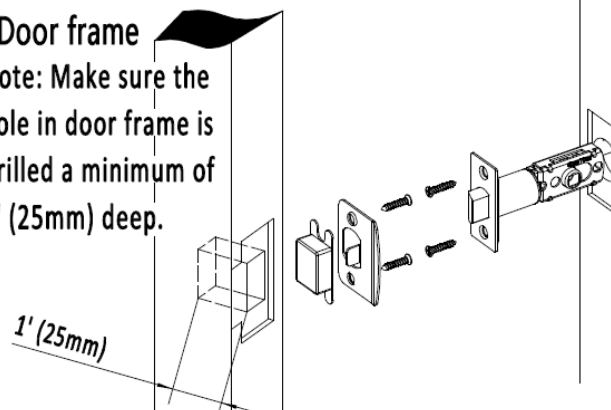
Backset is the distance from the door edge to the center of the hole in the door. The latch is provided with adjustable design which can fit either 2-3/8" (60mm) or 2-3/4" (70mm) backset.

## 3. Install latch and strike

### 3. Install latch and strike

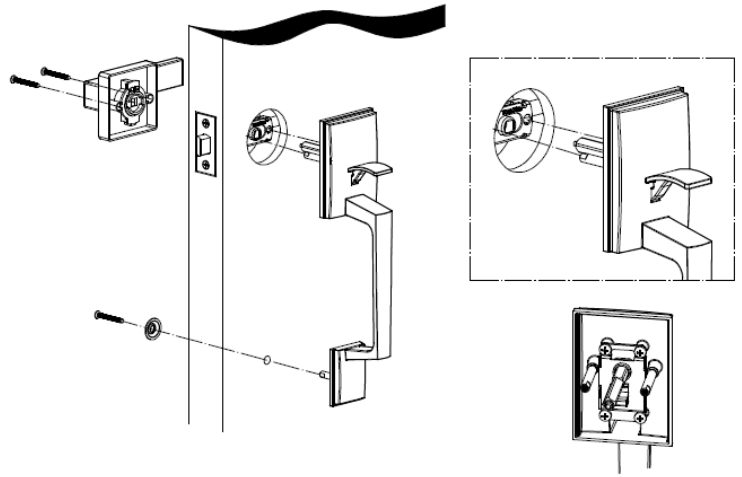
Door frame  
Note: Make sure the hole in door frame is drilled a minimum of 1" (25mm) deep.

1" (25mm)



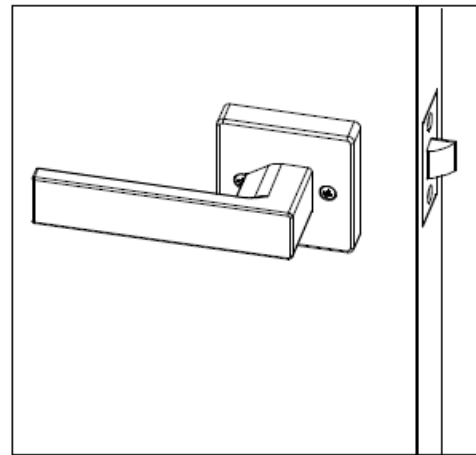
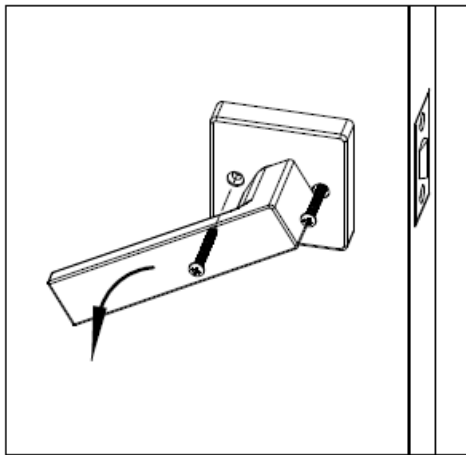
Door  
Note: The latch should be aligned with the chiseled properly.

## 4. Install Handleset



The base of spindle must be rotated aligning to the hole.

## 5. Install Handle Lever



Test the Handleset after installation. Keep the door open, retract the latch by pressing knob from outside and pushing the lever from inside of the door to test if the Handleset works smoothly.

## OPERATIONS BY APP VIA BLUETOOTH

1. Download and install **TTLock** from Google Play or APP Store

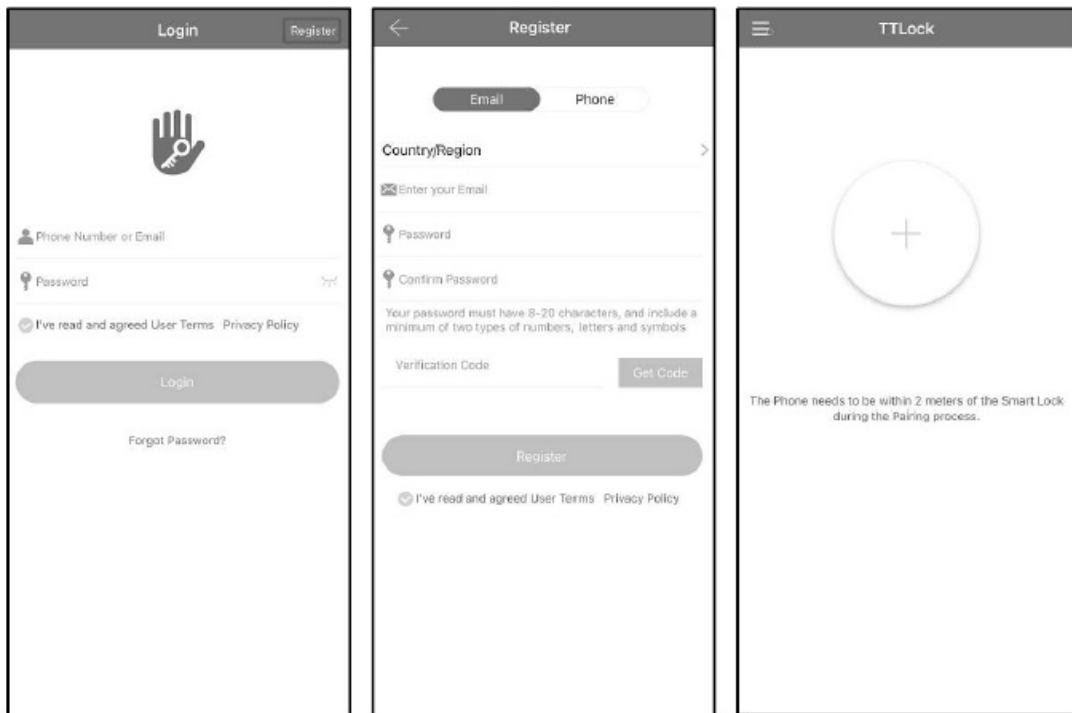


Google Play

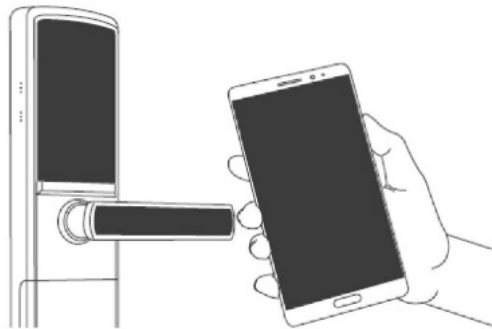


APP Store

2. Register account with phone number or e-mail and login.



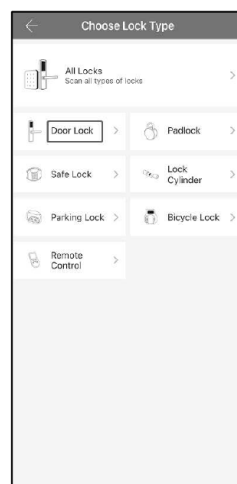
### 3. Add your lock on APP



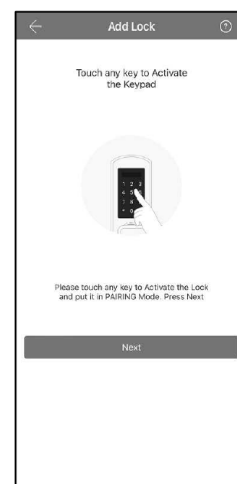
Ensure Bluetooth is enabled on your smartphone and stay 2 meters within the lock, touch the keypad screen to activate the lock when watching.



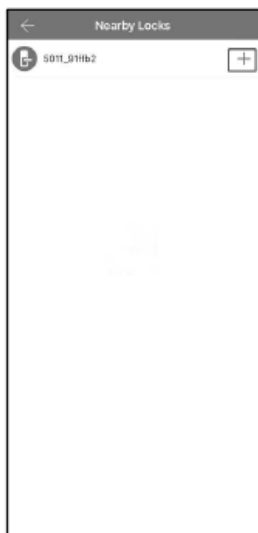
Click '+' in the center



Select 'Door Lock'



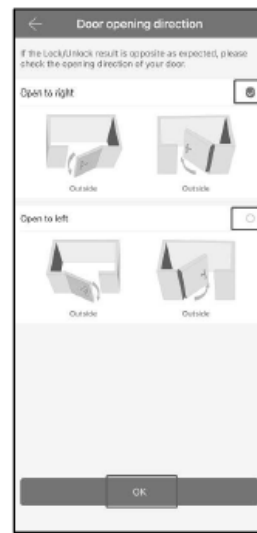
Touch keypad and click 'Next'



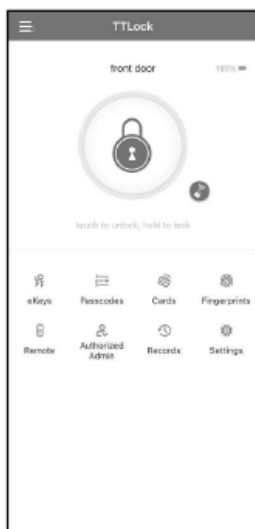
Click '+' of upper right corner



Name your lock, and click 'OK'

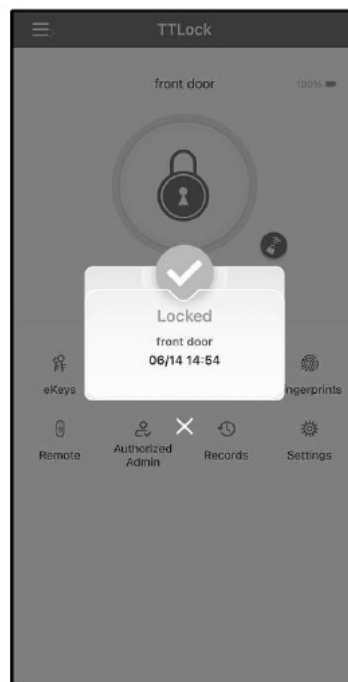
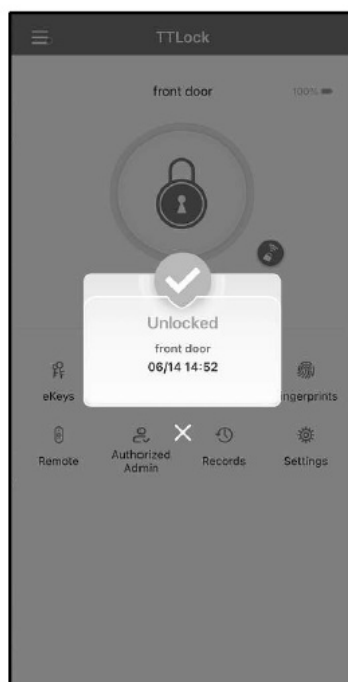


Choose door open direction



Add completed

## Part 2: Unlock/lock by APP via Bluetooth



- Unlock by touching the lock button, it will pop up 'unlocked'
- Lock by long-pressing the lock button, it will pop up 'locked'
- If you want remote control, you need to connect to the gateway.

**Remarks:** Once the lock/unlock direction shows reversed when operating, please switch the toggle button to correct direction and re-install it.

### Part 3: Auto-lock setting

**Remarks:** Auto-lock is setting up only by the program, but couldn't be used to determine if your door is locked. And please stay your phone connection to your lock via Bluetooth during setting process.



Click 'Settings'



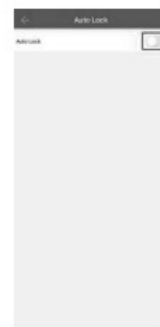
Set period you need to set



Click 'Auto Lock'



Or enter your time period



Activate Auto Lock



5-900s are available



Set up completed

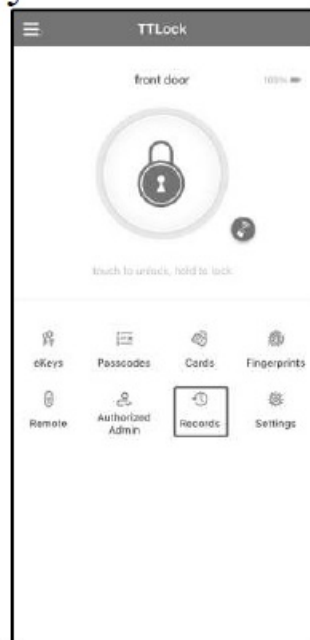
### Part 4: Share APP operation to your family/guests(ekey)

- Key is a function for you to authorize the rights to your family members and guests to unlock/lock your door by the same APP. eKey can be authorized to MAX. 20 smart phone users.
- Download TTLock app and register a new account on new smart phone of family or guests.
- Click 'eKeys' on the APP screen with admin account(The first account to add lock).





Click 'Records'



View 'Records'

- Select Time, Permanent, One-time, Recurring eKey by yourself, then input Recipient account and name it.
- Select time period if necessary, then click 'send'.
- Refresh by pulling down on the APP screen with new smart phone APP, the smart lock will show up on the APP screen.

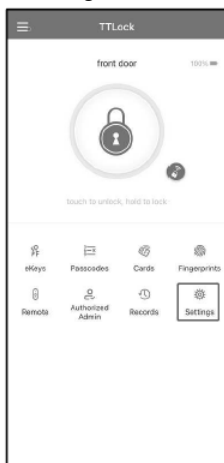
**Remarks:** Admin account can manage all guest accounts by clicking 'eKeys' on APP screen.

## Part 5: Records

It records all the time and manner of the smart lock and you can check the 24/7 history anytime and anywhere.

## Part 6: Lock Sound

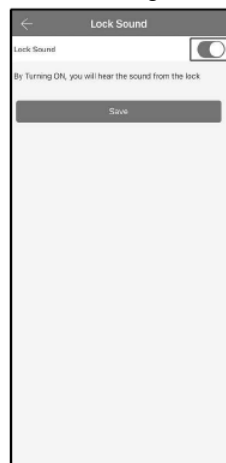
The original setting for the smart locks Lock Sound On, you can change it if you want.



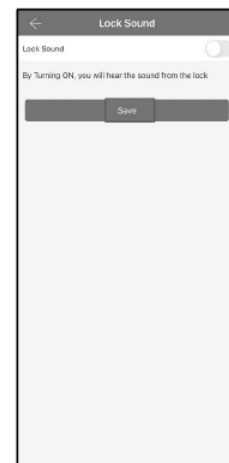
Click 'Settings'



Click 'Lock Sound'



Click button turns gray

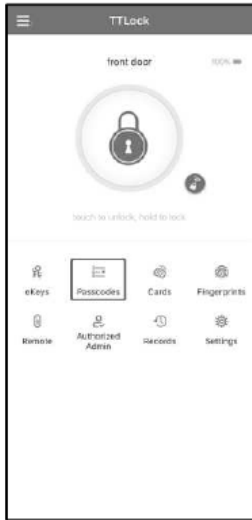


Click 'Save'

**Remark:** Please stay your phone connection to your lock via Bluetooth during setting process.

## Operation by keypad

## Part 1: Generate Passcode



Click 'Passcode' on APP



Select Passcode type



Passcode generated

## Part 2: unlock/lock by keypad

- Unlock by inputting Passcode, then press unlock button
- Lock by long-pressing lock button

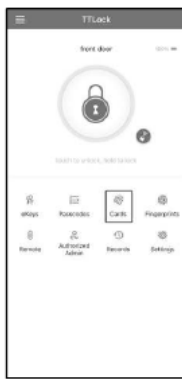
**Remark:** For security, this smart lock supports Virtual Passcode(Add any digit in front of or back of Passcode. e.g. Your Passcode is 12345678, you can unlock by 5612345678 or 1234567802).

## Part 3: Manage Passcode

Admin account can manage all Passcodes by clicking 'Passcodes' on APP.

## Operation by IC cards

There are four IC cards included in the package, if you want more, please contact our service team. IC Card can be used to unlock your door, but can not be used to lock your door.



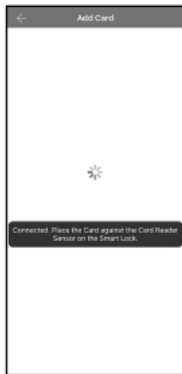
Click 'Cards' on APP



Name it and select time period



Waiting for connection



Connected

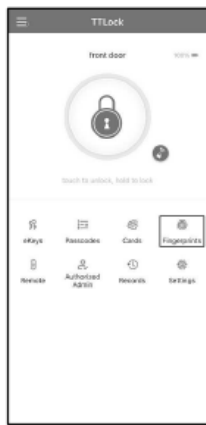


Place IC Card on the keypad, add completed

**Remark:** Please stay your phone close to your lock via Bluetooth during setting process.

## Operation by Fingerprint

Please make sure whether your lock has fingerprint function or not before operation. Fingerprint can be used to unlock your door, but can not be used to lock your door.



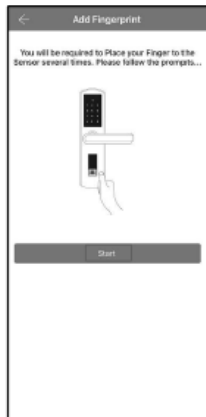
Click 'Fingerprints' on APP



Click 'Add Fingerprint'



Name it and select time period



Click 'Start'



Place Finger 4 times



Add completed

**Remark:** Please make sure whether your lock has fingerprint function or not before operation. Fingerprint can be used to unlock your door, but can not be used to lock your door

## Operation by mechanical keys

There are two compatible keys included in the package, if you don't use the keys, please keep it for backup.

- Press the key cover, and turn it out.
- Insert the keys to unlock your door.

## Operation by APP via wifi remotely

We provide Bluetooth wifi gateway(Sold separately) for this smart lock to reach for remote control via internet, you can search for Narpult smart wifi gateway to find it on [amazon.com](https://www.amazon.com).

### Remark:

- When the gateway is not added, the red and blue lights flash alternately.
- When the gateway is successfully added, the blue light flashes, Ensure the gateway stay 3 meters within the smart lock.

## More function

### Part t Alarm

- **Anti-theft Alarm:** Once this smart lock get four times wrong Passcodes, it will be locked for 5 minutes, nobody can get in even if you have correct Passcodes.
- **Low Voltage Alarm:** Once the batteries close to be dead, this smart lock will sound a beep alarm, and if you forget to replace the batteries before to be dead, you can use Type-C backup power to power for it(Under the keys cover).

## Part 2: Passage Mode

During the preset time period, this smart lock will remain unlocked until it is manually locked once Passage Mode activated.

## Warranty

You will enjoy 100% satisfaction service with your smart lock. We provide 30 days full refund and 60 days replacement with any product issue. E-mail to us with your order information, you will get more.

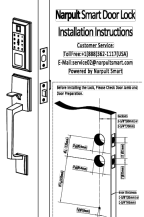
## Customer Service:

Toll Free: +1(888)362-1117(USA)

E-Mail: [service02@narpultsmart.com](mailto:service02@narpultsmart.com) Powered by Narpult Smart.

---

## Documents / Resources

	<p><a href="#">Narpult B0CHRX7G6X Smart Lock with Front Door Handle Set</a> [pdf] Instruction Manual B0CHRX7G6X Smart Lock with Front Door Handle Set, B0CHRX7G6X, Smart Lock with Front Door Handle Set, Front Door Handle Set, Door Handle Set, Handle Set</p>
---	--

## References

- [User Manual](#)

[Manuals+](#), [Privacy Policy](#)

This website is an independent publication and is neither affiliated with nor endorsed by any of the trademark owners. The "Bluetooth®" word mark and logos are registered trademarks owned by Bluetooth SIG, Inc. The "Wi-Fi®" word mark and logos are registered trademarks owned by the Wi-Fi Alliance. Any use of these marks on this website does not imply any affiliation with or endorsement.