



NANXIN ST62 Smart Floor Lamp User Manual

[Home](#) » [NANXIN](#) » NANXIN ST62 Smart Floor Lamp User Manual 

Nanxin

ST62 Smart Floor Lamp
User Manual



NOTICE

- Please keep the product away from open flames.
- Please keep away from water to avoid damage.
- Please keep it out of reach of children. Children need to use It under adults' supervision.
- Please cut off the power supply if a hazard occurs.
- Please use the product in line with the instructions.
- For indoor use only. (Works better in a dark environment)

Contents

[1 INTRODUCTION](#)

[2 SPECIFICATIONS](#)

[3 PACKAGE INCLUDE](#)

[4 QUICK INSTALLATION GUIDE](#)

[5 INSTALLATION DIAGRAM](#)

[6 CONTROLLING BY DEVICE
BUTTONS](#)

[7 FAQ](#)

[8 Documents / Resources](#)

[9 Related Posts](#)

INTRODUCTION

The Smart Floor Lamp is an entertaining electronic device and has 16 million color effects, there are 3 ways to control it, it will give you the best visual experience of enjoying the lighting, and make your life more fun!

SPECIFICATIONS

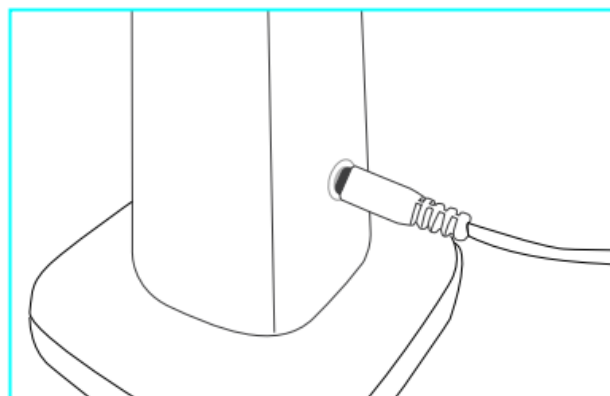
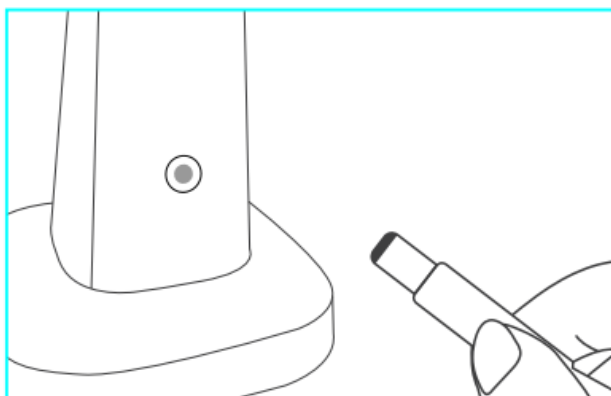
Power Input	1 2V 2A(max)
Product Size(cm)	150*10*10
Work Temperature	Operating:-10°C-40°C RH<80%/0, Storage:-20°C-70°C RH<80%
Wireless Type	WiFi 2.4G
Radio Technology	IEEE 802.11 B/G/N, Bluetooth 5.1
Shell Material	Aluminum ABS+PC
LED Color	RGB IC
Application	Amazon Alexa, Google Home, Yandex Alice
Timer	Flexible timing
Musical Response	Support
App Support	IOS 8.0 or Android 4.1 and higher
Delayer	Countdown (time) off/on; Time setting: time (0-23H), minute (1-59min)
Indicator Light	Red lights
Product Warranty	1 Year

PACKAGE INCLUDE

- 1* Lamp with base
- 3* Lamp body
- 1* Plastic cap for lamp body
- 1* Cable with adaptor
- 1* Install & User Manual

QUICK INSTALLATION GUIDE

1. Installation diagram. (See page 4)
2. Put the 3 lamp bodies connect to the lamp base.
3. Connect the adaptor port to the lamp base.

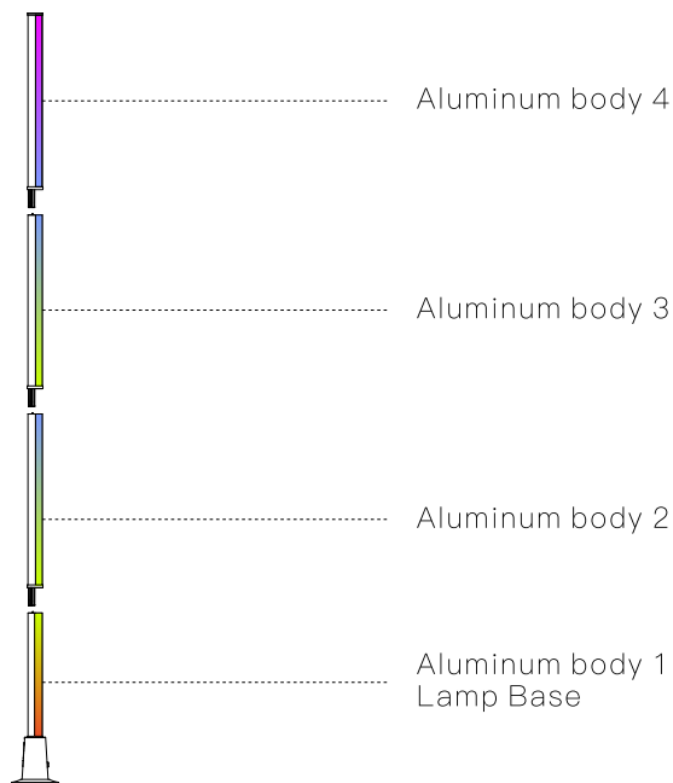


4. Connect the adaptor plug to the power.
5. Then enjoy the lamp, which you can control it by pressing the lamp base button, or via App.

INSTALLATION DIAGRAM

Quick install, total have 4 blocks. Clip the aluminum bodies on the Lamp base, and make them connected, you can use 1 block only, 2 blocks, 3 blocks or 4 blocks.

Notice: Please power off when assembling and disassembling, and be careful not to break the plug pins.



CONTROLLING BY DEVICE BUTTONS



1. ON/OFF
2. Local music mode
3. Dynamic effect

1. Power button: Short press is to turn on/off; Long press by 6-10 seconds to make the red light blink rapidly to configure the network.
2. Local music mode: Short press enters the local music mode, and a continuous short press toggles from rock, jazz, classical, roll, energy, and spectrum cycles.

3. Dynamic effect: Short press enter the scene selection mode (the jump is obvious in the music rhythm mode), continuous short press enter the action effect switch, short press 1 7 times as a cycle.

CONTROLLING BY APP

How to connect to a Wi-Fi network?

1. Download Smart Life from  OR 

Download or scan the QR code and install the Smart Life App for either iOS or Android. Once downloaded, the app will ask you to register your device. Enter your phone number or email which one you convenient and select the country you live in. If using a phone you will receive a text with a registration code. If you choose the email you will need to create a password.

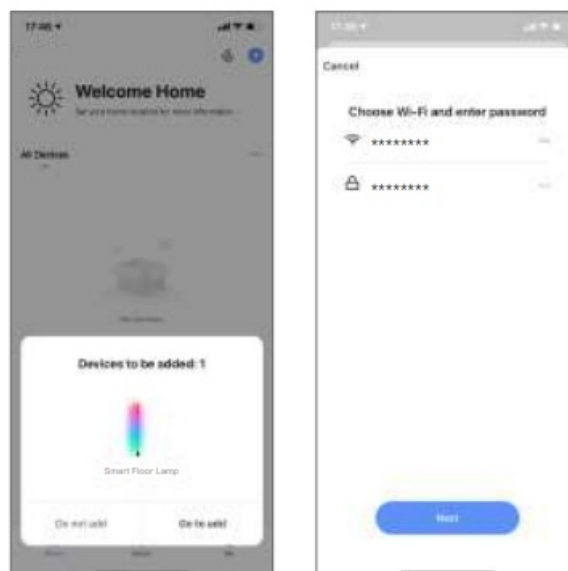


<https://smartapp.tuya.com/smartlife>

Please note: There are two mode configurations (Bluetooth Mode/Quick Mode) available for you to choose from to add the device to the app. Bluetooth Mode is recommended (Need to turn on your phone's GPS first).

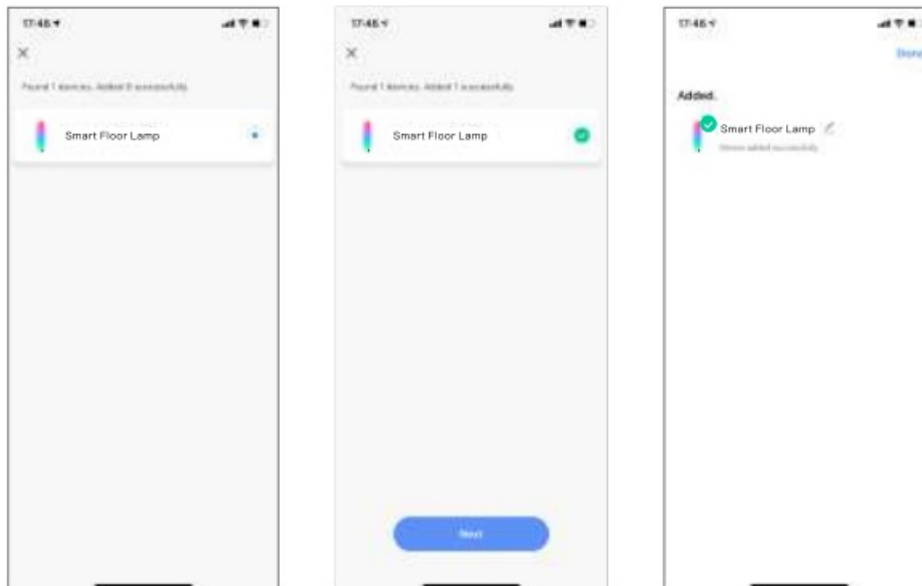
Bluetooth Mode Configuration (Common)

1. Turn on your phone's Bluetooth, after the Smart Floor Lamp is Powered on, wait for 3-5 seconds to press the Lamp Base On/Off button for 6-10 seconds until the RED light blinks rapidly. Enter the add device interface. It automatically says "Devices to be added" then press "Go to add". (If the devices can't appear automatically, then you need to add them manually).



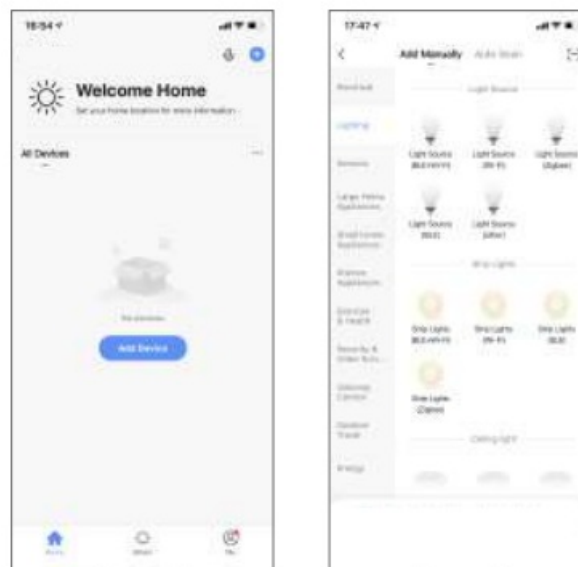
2. Enter your Wi-Fi Password and press "Next" to add a device. Once connected, the App will prompt you to

Press “Done”.



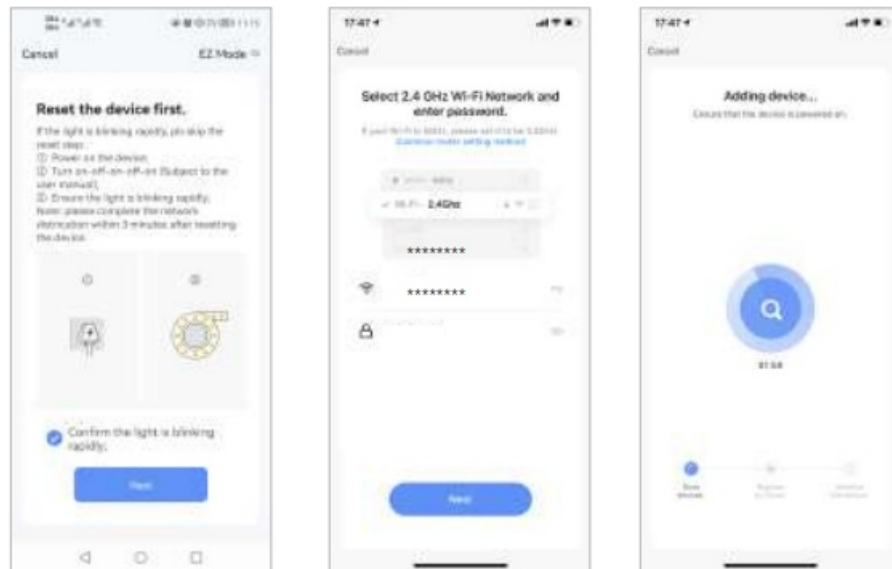
Quick Mode Configuration

1. Make sure quick mode configuration is initiated: The Lamp blinks Red rapidly (twice per second). If it blinks Red slowly (once every 3 seconds), press and hold the power button on the Smart Floor Lamp for 6-10 seconds until it blinks Red light rapidly.
2. Tap the icon “+ ” on the top right, choose any device type and enter into “Add Manually”.

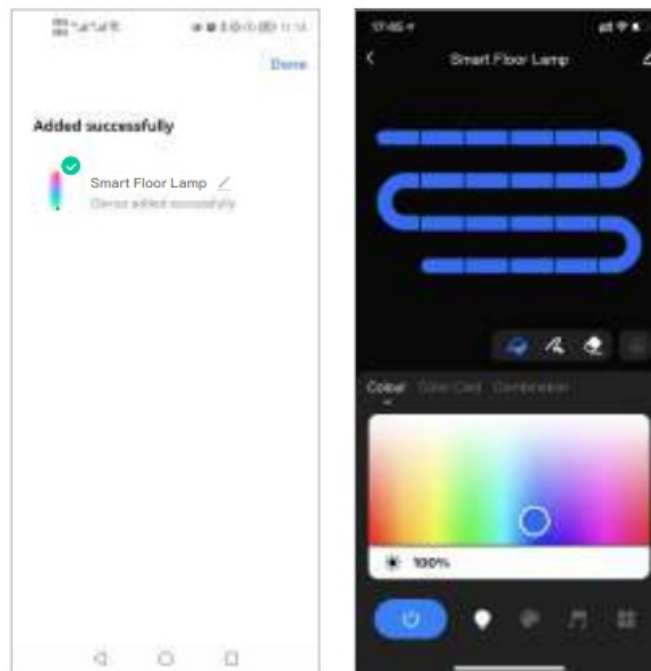


Please remember to choose the fast blinking.


3. Follow up the In-app instructions to connect the Smart Floor Lamp to your Wi-Fi network.
4. Enter your Wi-Fi Password and press “Next” to add a device. Once connected, the Red Light will turn from blinking to solid.

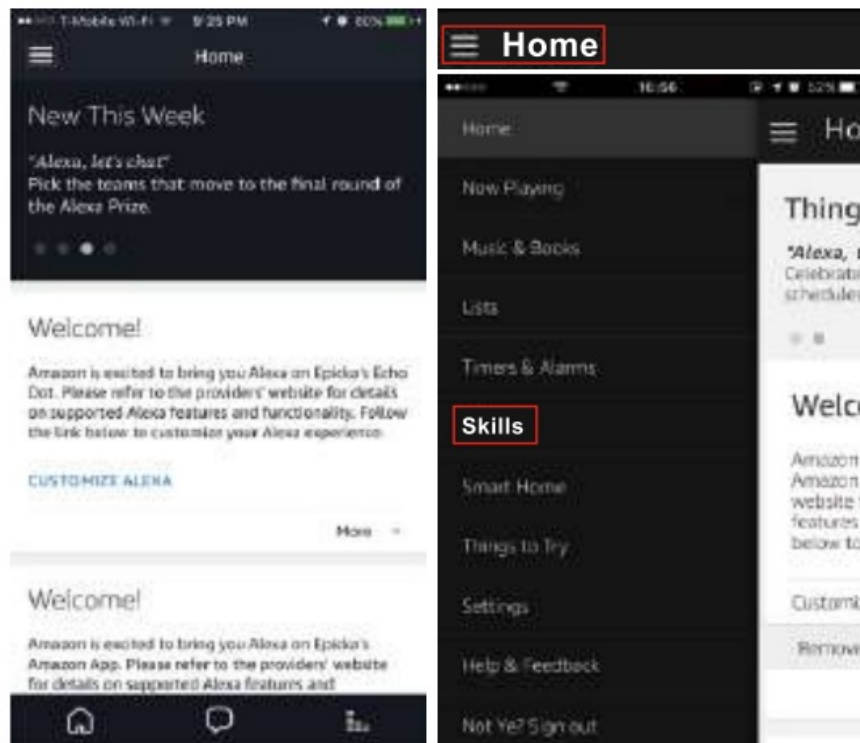


5. Once the connection is finished, the App will prompt you to press “Done”.
6. Now you can control the Smart Floor Lamp through Smart Life APP, and the device will be added to the “Device List”.



How to connect Smart Floor Lamp to Amazon Alexa

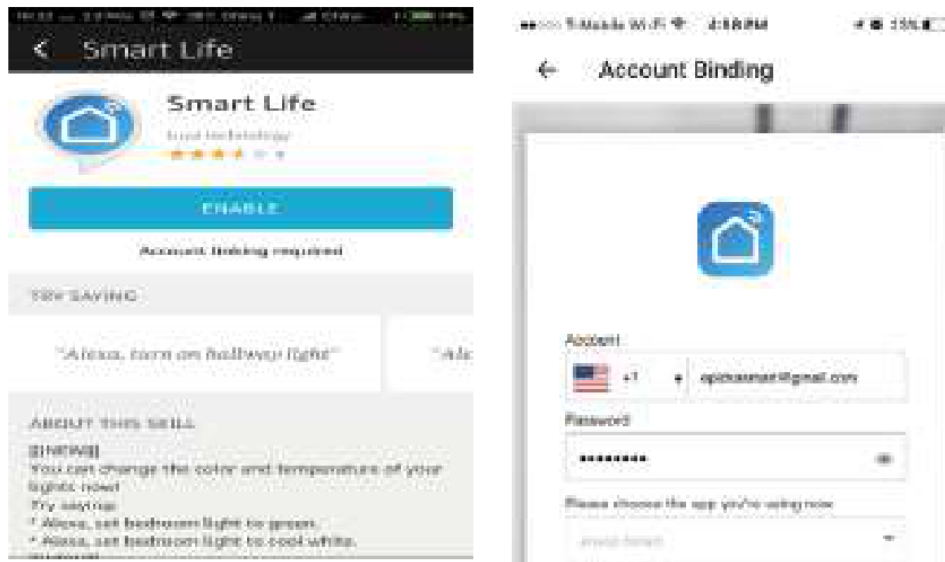
1. Launch Smart Life App, sign into your account and make sure Smart Floor Lamp is on the device list.
2. Minimize Smart Life App, then launch the Alexa App and sign in to your Alexa account and make sure you have at least one Alexa smart speaker-controlled device installed like Echo dot, etc.
3. In the upper left corner of the Home page, press the  button to show the APP Menu. Then select **Skills** in the menu.



4. Type in "Smart Life" in the search and press the search button next to it.





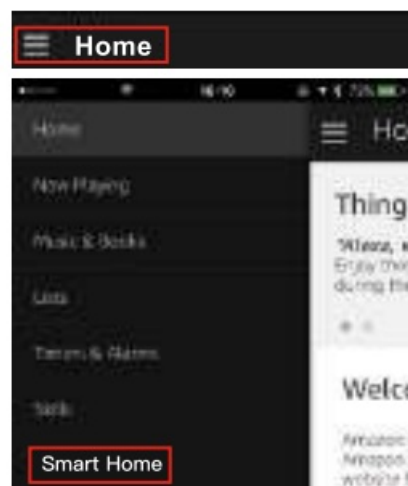
5. Enable Smart Life Smart Skill then sign in to your Smart Life account to complete your account set up.



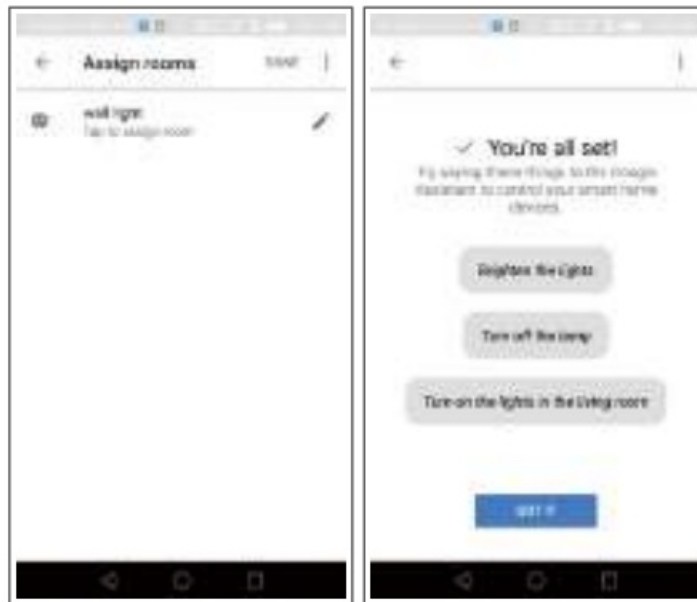
6. Once your account has been successfully linked, ask Alexa to discover devices. After a 20-second search, Alexa will show all the available devices.



7. Go back to Menu by pressing  a button, and then press the  button.



8. In the Smart Home page, you can group your devices in different categories. Your Smart Life APP has now been paired with Alexa. Now you can control your Smart Floor Lamp through Alexa.



FAQ

1. What should I do if I can't turn off or turn on the Smart Floor Lamp?

—Make sure your cellphone and the Smart Floor Lamp are connected to the same WiFi connection.

2. What should I do when the configuration fails?

—Make sure the Smart Floor Lamp's Red light is flashing -Twice per second. —Make sure to connect your Smart Floor Lamp within a short distance of your internet router. —Check whether the available internet network has a frequency of 2.4GHz. —Check your internet connection is working properly.

3. How can I share devices with my family members?

—Open the Smart Life APP, select “profile” > “Devices Sharing” >”Sent” select “Add Sharing”, now you can share with your family members.

4. Can this APP be used on any type of mobile phone? Can I control the device from a distance?

—Yes, the APP can work with both android & 103 systems. Once connected to the Internet, there is no distance limitation.

FCC Statement

Changes or modifications not expressly approved by the party responsible for compliance could void the user's authority to operate the equipment. This equipment has been tested and found to comply with the limits for a Class B digital device, pursuant to Part 15 of the FCC Rules. These limits are designed to provide reasonable protection against harmful interference in a residential installation. This equipment generates uses and can radiate radio frequency energy and, if not installed and used in accordance with the instructions, may cause harmful interference to radio communications. However, there is no guarantee that interference will not occur in a particular installation. If this equipment does cause harmful interference to radio or television reception, which can be determined by turning the equipment off and on, the user is encouraged to try to correct the interference by one or more of the following measures:

- Reorient or relocate the receiving antenna.
- Increase the separation between the equipment and receiver.
- Connect the equipment into an outlet on a circuit different from that to which the receiver is connected.
- Consult the dealer or an experienced radio/TV technician for help This device complies with part 15 of the FCC rules.

Operation is subject to the following two conditions (1) this device may not cause harmful interference, and (2) this device must accept any interference received, including interference that may cause undesired operation. This equipment complies with FCC radiation exposure limits set forth for an uncontrolled environment. This equipment should be installed and operated with a minimum distance 20cm between the radiator & your body.

Documents / Resources

	<p>NANXIN ST62 Smart Floor Lamp [pdf] User Manual ST62, 2A5ET-ST62, 2A5ETST62, L100, Smart Floor Lamp, ST62 Smart Floor Lamp</p>
---	--