

naim Desktop Client Interface User Manual

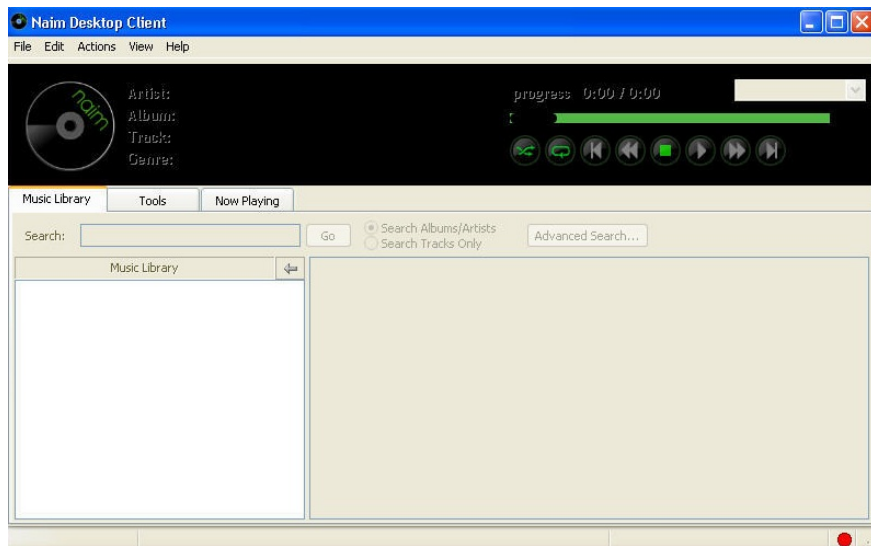
[Home](#) » [naim](#) » naim Desktop Client Interface User Manual 

Contents

- [1 naim Desktop Client Interface](#)
- [2 Product Information](#)
- [3 FAQ](#)
- [4 Introduction](#)
- [5 The Desktop Client Interface](#)
- [6 Interface Tabs Now Playing](#)
- [7 Simple and Advanced Search](#)
- [8 Playlists](#)
- [9 Tools and Utilities](#)
- [10 Documents / Resources](#)
 - [10.1 References](#)



naim Desktop Client Interface



Specifications

- **Product Name:** HDX Desktop Client Interface
- **Version:** 2.0.7.1136 and above
- **Compatibility:** Microsoft Windows XP, Windows Vista, Windows 7

Product Information

- The HDX Desktop Client Interface allows users to control their HDX system through various user interfaces depending on the installation environment and available equipment.

Introduction

- The HDX Desktop Client is an application that can be installed on a PC running Microsoft Windows XP, Windows Vista, or Windows 7.
- The PC must be connected to the network that incorporates the HDX system. The application and its installer can be found on the CD packed with the HDX.
- In addition to enabling control of HDX music playback, the Desktop Client interface also provides a variety of setup and maintenance functions exclusive to this interface.
- To install the Desktop Client application, insert the CD into the PC's CD drive, double-click on the Desktop Client icon, and follow the on-screen prompts.
- Make sure that the HDX is switched on and connected to the network when running the Desktop Client application.
- The format and operation of the Desktop Client interface will be familiar to those with experience in the Windows Explorer file browser application.

Connecting to The HDX

- When first run, the Desktop Client application will scan the network to identify any connected Naim hard disk players.
- A window will open, listing the players or servers found along with their IP addresses.
- Each player's name listed is a shortened form of the MAC address printed on its rear panel.

FAQ

Q: Can the Desktop Client Interface work with Mac operating systems?

A: No, the Desktop Client Interface is compatible only with Microsoft Windows XP, Vista, and 7.

Q: How do I troubleshoot connection issues with the HDX?

A: If you encounter connection problems, ensure that the HDX is powered on and correctly connected to the network. Restarting both the HDX and your PC may help resolve connectivity issues.

- **Note:** This manual is issue No. 1 and describes the operation of Desktop Client software release version 2.0.7.1136 and above. Earlier software will not operate fully in the manner described in this manual.
- To the fullest extent permitted by applicable law, Naim Audio Ltd. disclaims all liability for any loss or damages whether real, incidental, or consequential that arise from using this product.
- Naim Audio Limited, its agents, and representatives cannot be held responsible for the loss of any data or content from a Naim/NaimNet server, however caused.

Introduction

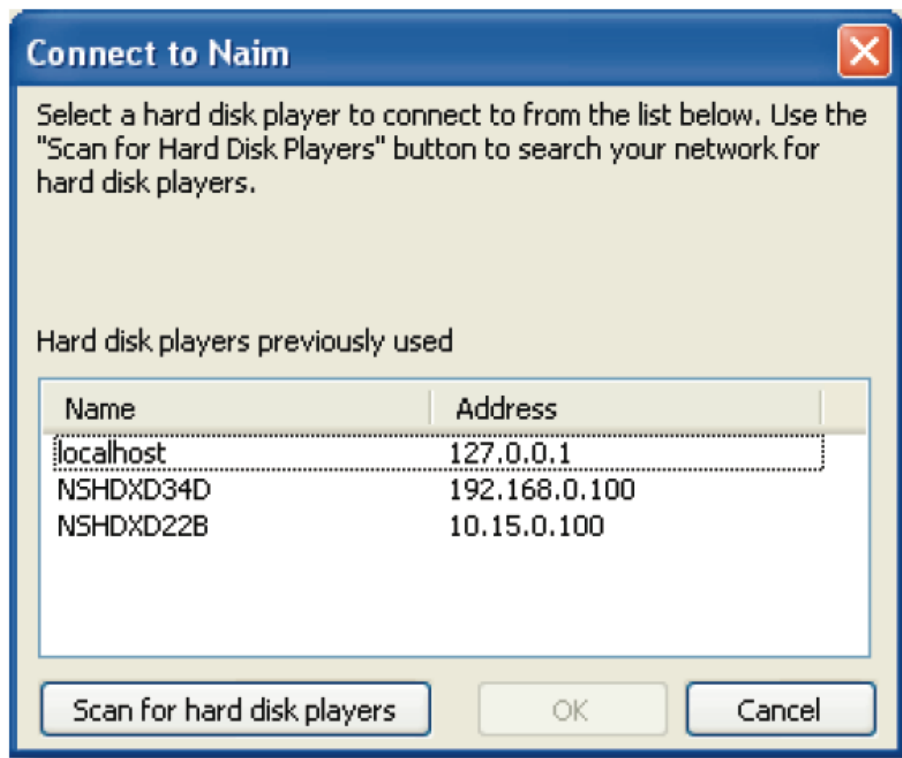
- Unlike a conventional item of hi-fi equipment, the HDX can be operated in many different ways using a variety of user interfaces.
- The user interface you use to control your HDX will depend on the type of system in which it is installed and the ancillary equipment available.
- If the HDX is installed in a home network that includes a personal computer running Windows XP, Windows Vista, or Windows 7, it can be operated via the Desktop Client Interface.
- The Desktop Client application provides the most comprehensive operational and search functionality. The Desktop Client is covered in the following pages.

The Desktop Client Interface

- The HDX Desktop Client is an application that can be installed on a PC running Microsoft Windows XP Windows Vista or Windows 7.
- The PC must be connected to the network that incorporates the HDX. The application and its installer can be found on the CD packed with the HDX.
- In addition to enabling control of HDX music playback, the Desktop Client interface also provides a variety of HDX setup and maintenance functions that are not available from any other interface.
- To install the Desktop Client application insert the CD into the PC's CD drive, double-click on the Desktop Client icon, and follow the on-screen prompts.
- Ensure that the HDX is switched on and connected to the network when the Desktop Client application is run.
- The format of the Desktop Client interface and its operation will be familiar to those with experience with the Windows Explorer file browser application.

Connecting to The HDX

- When first run, the Desktop Client application will scan the network to identify any connected Naim hard disk players. A window will open, illustrated below, listing the player or servers found and their IP addresses.
- Each player “name” listed is a shortened form of the MAC address printed on its rear panel.
- If the Desktop Client has been previously connected to other network items (or to items with variable IP addresses) these may also be listed. Use the shortened MAC address shown in the name column to identify the HDX.

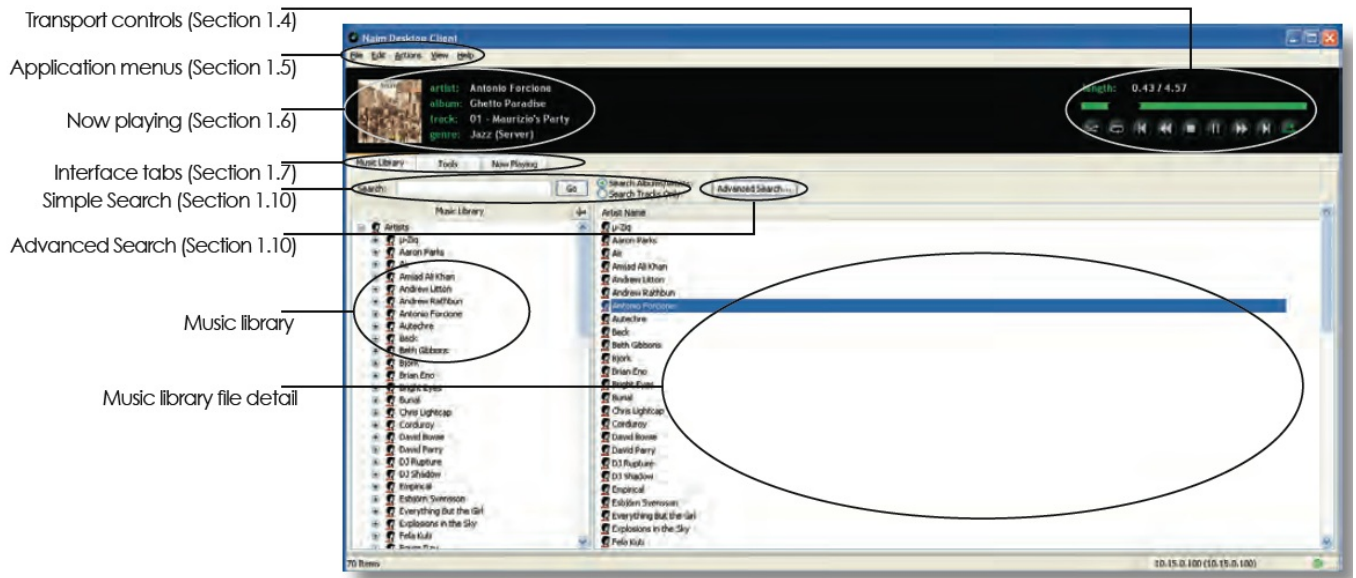


- If the HDX is not immediately listed, check that it is connected to the network and switched on, and click on Scan for hard disk players.
- **Note:** It can take as long as a minute for the HDX to “boot up” and become visible to the Desktop Client.
- Select the Name that refers to the appropriate hard disk player by clicking on it, and click OK. The selected hard disk player will now be connected to the Desktop Client.

The Interface Screen

- All Desktop Client functions are controlled via one main window. The window comprises some separate areas and tools distinguished by their application and context.
- The windows and tools are identified in Diagram 1.3 and described in the following paragraphs.

Interface Windows and Elements



Transport Controls

- As well as providing stop, play/pause, fast forward, fast reverse, step forward and step reverse, the transport controls also include shuffle, repeat, and rip mode buttons. The rip mode button switches the HDX between Rip and Playback modes.
- In Rip mode, the HDX will automatically rip a CD inserted in its drawer. In Playback mode, the HDX will automatically play a CD inserted in its drawer through its local audio outputs.
- The shuffle function is applied to the current playlist while the repeat function can be applied to either single tracks or the current playlist. For more on creating and managing playlists see Section 1.13.

Application Menus

- The application menus comprising File, Edit, Action, View, and Help provide a variety of tools and functions. They are described in the following paragraphs.

The File Menu

- The File Menu provides network Connect and Disconnect commands, and application Exit commands.

The Edit Menu

- The Edit Menu provides file utilities (rename, etc.), copy and paste functions, select functions, and access to file properties.

The Actions Menu

- The Actions Menu provides alternative access to play, queue, and random play functions.

The View Menu

- The View Menu enables the selection of alternative interface views:

- Player Mode view in which only the Transport Controls, Currently Playing Data, and Application Menus are displayed.
- Maintenance Mode view in which only the Music Library data and Music Library detail windows are displayed. Interrogation of the maintenance screens does not affect the track or playlist currently playing.
- Player and Maintenance view in which both modes are displayed. Diagram 1.3 shows the Player and Maintenance view.

The Help Menu

- The Help Menu provides Desktop Client Application installation and version information.

Now Playing

- The Now Playing field displays the artist, album, title, and genre of the track currently playing.

The Desktop Client Interface

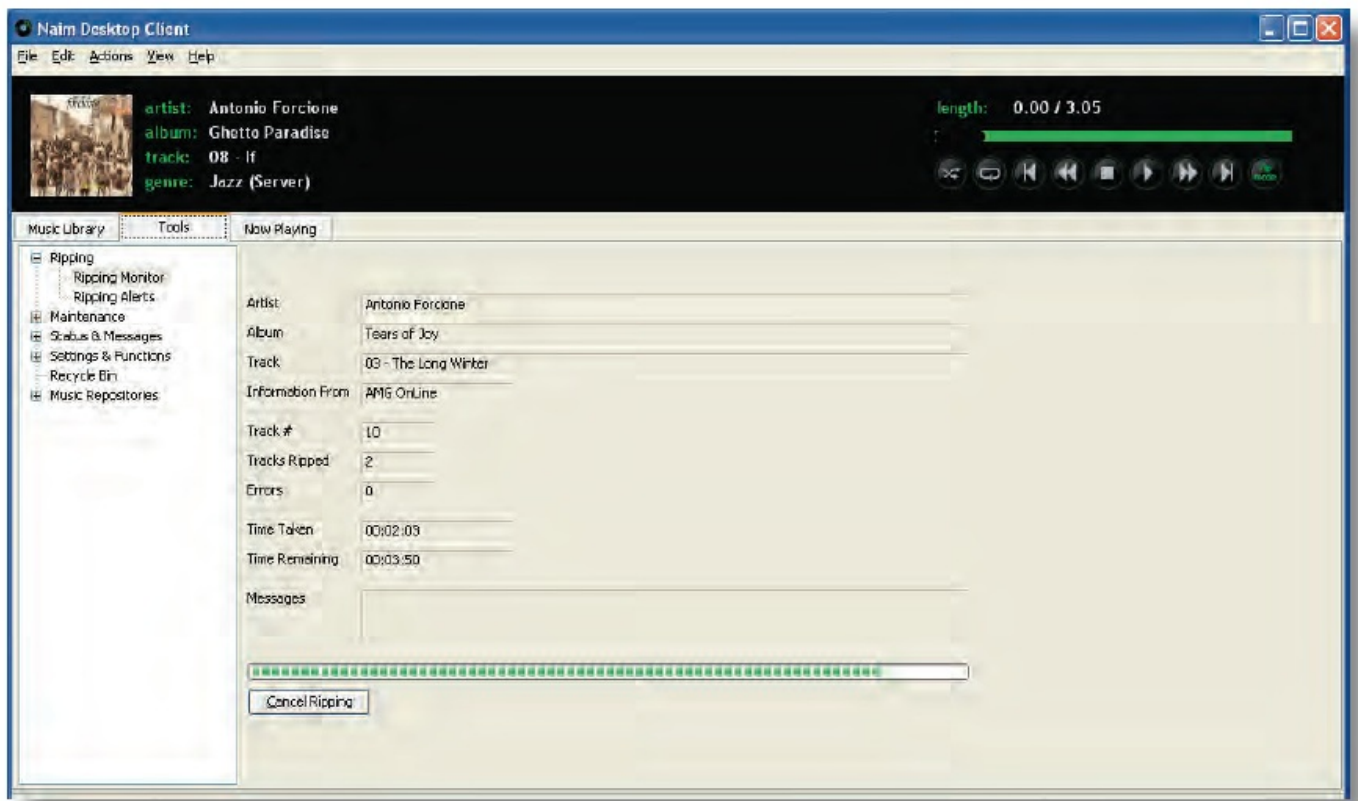
Interface Tabs

- The Music Library tab selects the page illustrated in Diagram 1.3. The external storage hardware items to which the interface is connected (if any, beyond the HDX's internal storage) are listed in the left-hand window.
- They can be selected and their contents expanded by clicking on their associated + graphics. The display in the right-hand window will then show the details of music files stored on each hardware item.
- Clicking on the column headings will re-order the list of items sorted by the heading criteria.

The Tools Tab

- The Tools tab selects the interface page illustrated in Diagram 1.8. It provides a set of hard disk player maintenance and setup utilities, listed in the left-hand window, that can be selected and their contents expanded by clicking on their associated + graphics. Selecting a utility will open a dialogue box in the right-hand window that either provides information or can be used to specify a variety of hard disk player and network setup parameters.
- Diagram 1.8 illustrates the Tools tab with the utilities in the left-hand window and displays the Ripping Monitor utility in the right-hand window. The full list of tools and utilities is described in Section 1.18.

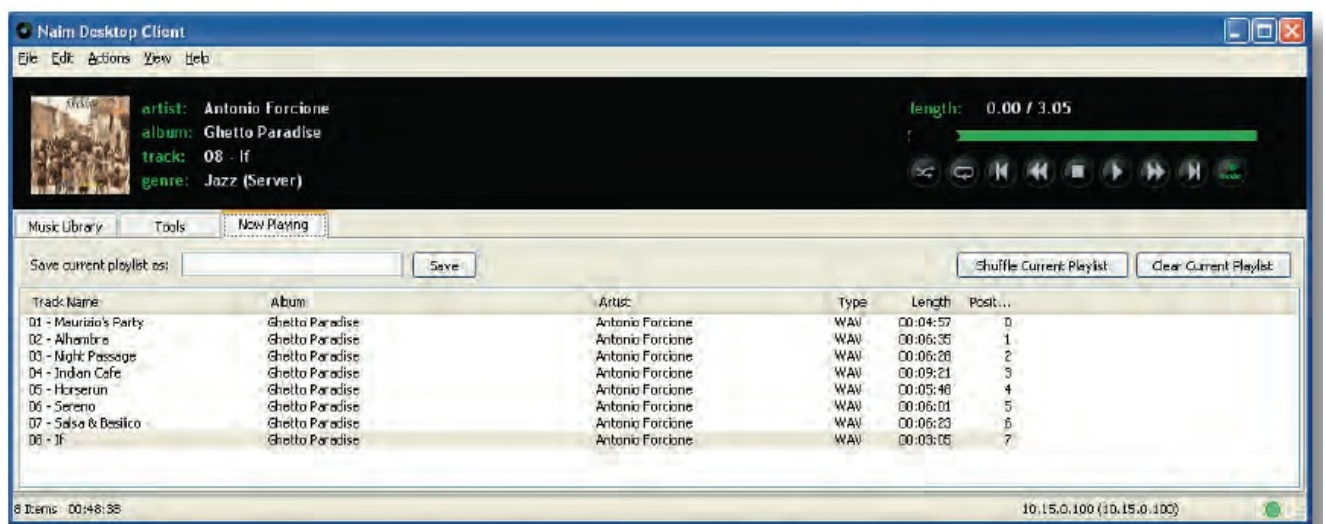
Interface Tabs – Tools



Interface Tabs Now Playing

The Now Playing Tab

- The Now Playing tab selects the interface page illustrated in Diagram 1.9. The page displays the track currently playing, its associated information, and the playlist in which it is included.
- The page also includes a text entry field for naming playlists and buttons for saving, shuffling (randomizing), and clearing playlists. For more about creating and managing playlists see Section 1.13.

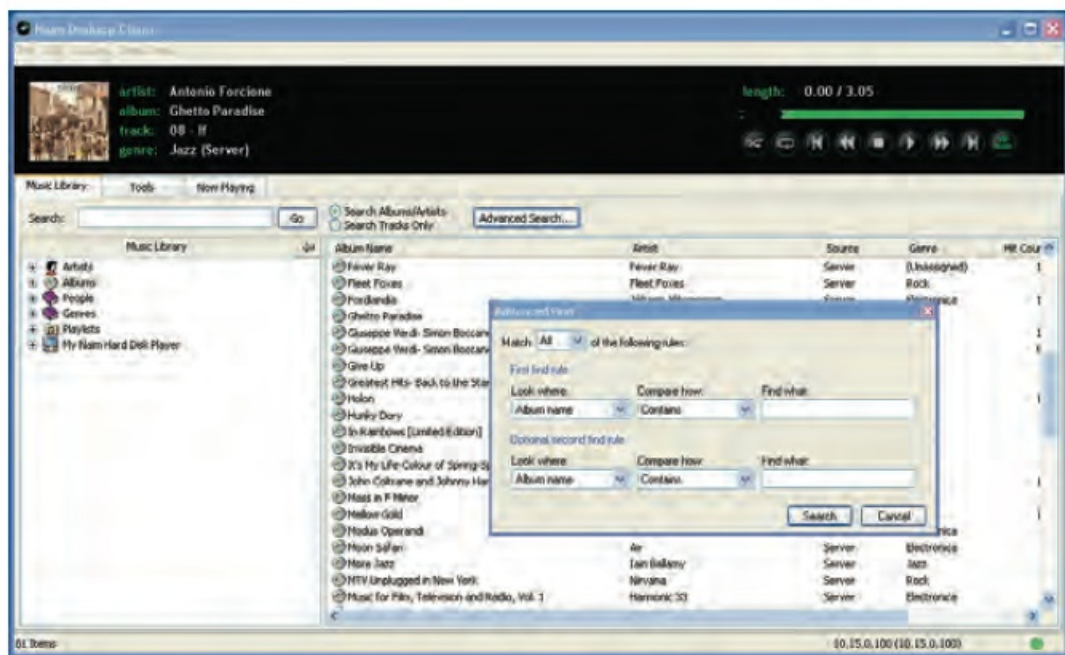


Simple and Advanced Search

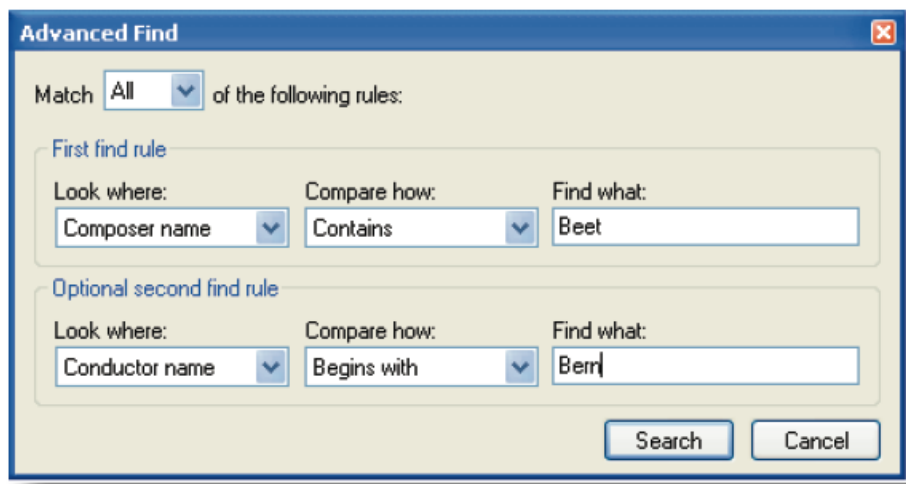
- The search tools of the Music Library page enable music files to be located for immediate playback or for addition to a playlist.
- The Search tools illustrated in Diagram 1.11 enable searches to be carried out of either albums and artists or individual tracks.

- It is not necessary to type a full name or title in the search entry field although the more detail that is entered, the more fruitful a search is likely to be.
- After entering the search text in the entry field and selecting either Albums/Artists or Tracks Only click on the Go button to initiate the search.
- The search results will be listed in the right-hand Music Library page window.
- Double-click on an item to play it immediately.
- The Advanced Search tool enables a finely targeted search of music files to be performed.
- To begin an advanced search click on the Advanced Search button. A text entry window will open as illustrated in Diagram 1.12.
- The advanced search text entry window enables two sets of search rules that can be configured to search for an album, artist, track, genre, composer, performer, or conductor.
- Each rule can also be constrained to contain, begin with, match exactly, not contain, or not match exactly the search text.
- A search can also be constrained to match all or any of the search rules and carefully configuring the search rules should enable any specific music file to be found quickly.
- For example, if a music library contained numerous Beethoven symphonies, but only versions conducted by Leonard Bernstein were required for playback, a search set up as illustrated in Diagram 1.12 would quickly find the appropriate music.

Simple Search



Advanced Search



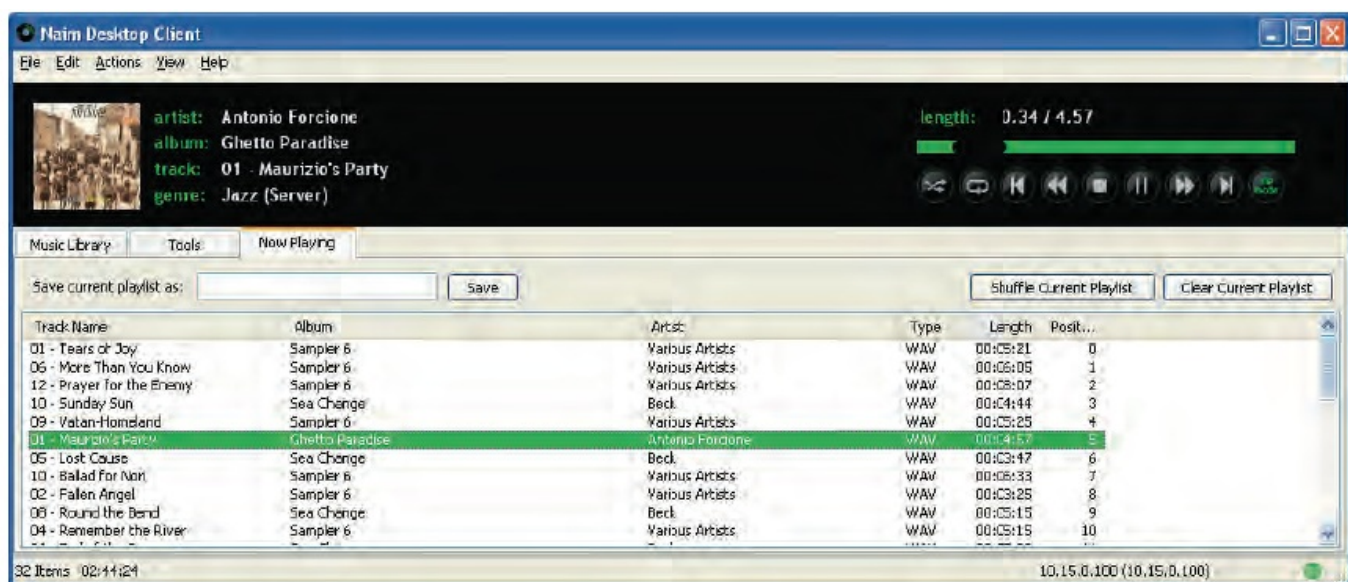
Playlists

- A playlist is a list of tracks arranged in a queue for playback. A playlist may be defined by the running order of an album, by selecting specific tracks or albums, or be created by selecting tracks with the same, artist, genre, composer, conductor, or performer.
- Playlists can be named and saved for later use.

To create, name, and save a track playlist proceed as follows:

- Click on the Music Library Interface Tab and then on the + graphic adjacent to the Albums thumbnail to expand the list of albums available to the server.
- Select the album on which the first track required in the playlist resides and then select that track in the right-hand window. Go to the application Actions menu and select Queue.
- Alternatively “right click” on the album and select Queue in the pop-up list.
- Repeat the selection and queuing of tracks until the desired playlist is complete.
- Click on the Now Playing Interface Tab. The queue of selected tracks will be displayed in the main window. To save the playlist, name it in the text entry field and click on Save.
- The playlist can be shuffled (randomized) or cleared by clicking on the appropriate buttons. Diagram 1.14 illustrates saving a playlist.
- **Note:** Clearing the current playlist does not delete tracks from the music library, it just removes them from the queue.
- Once saved, the playlist can be recalled from the Music Library Interface Tab. Click on the + graphic adjacent to the Playlists thumbnail to expand the list of saved playlists then select the desired one.
- To play the playlist go to the application Actions menu and select Play.

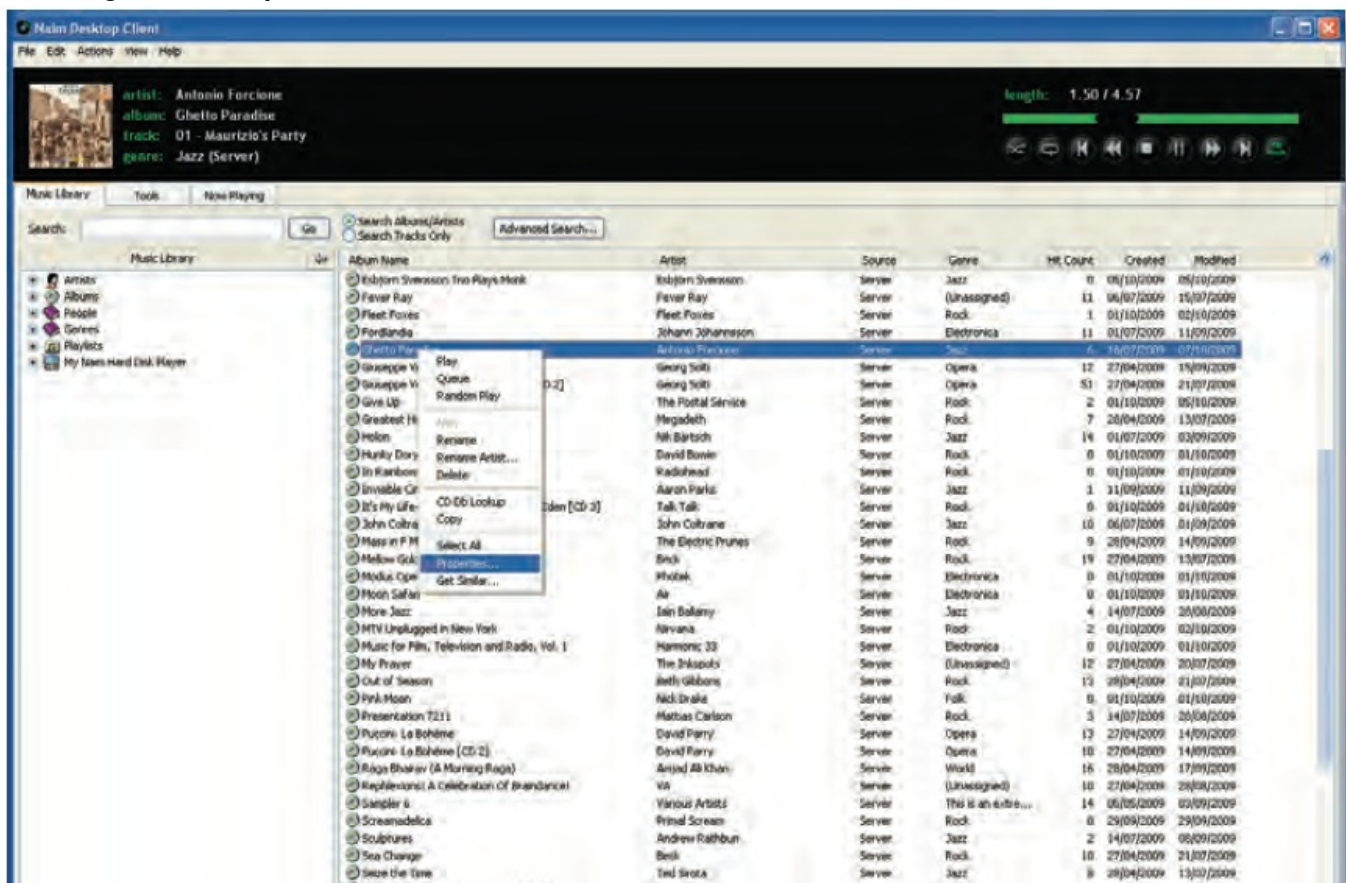
Save Playlist



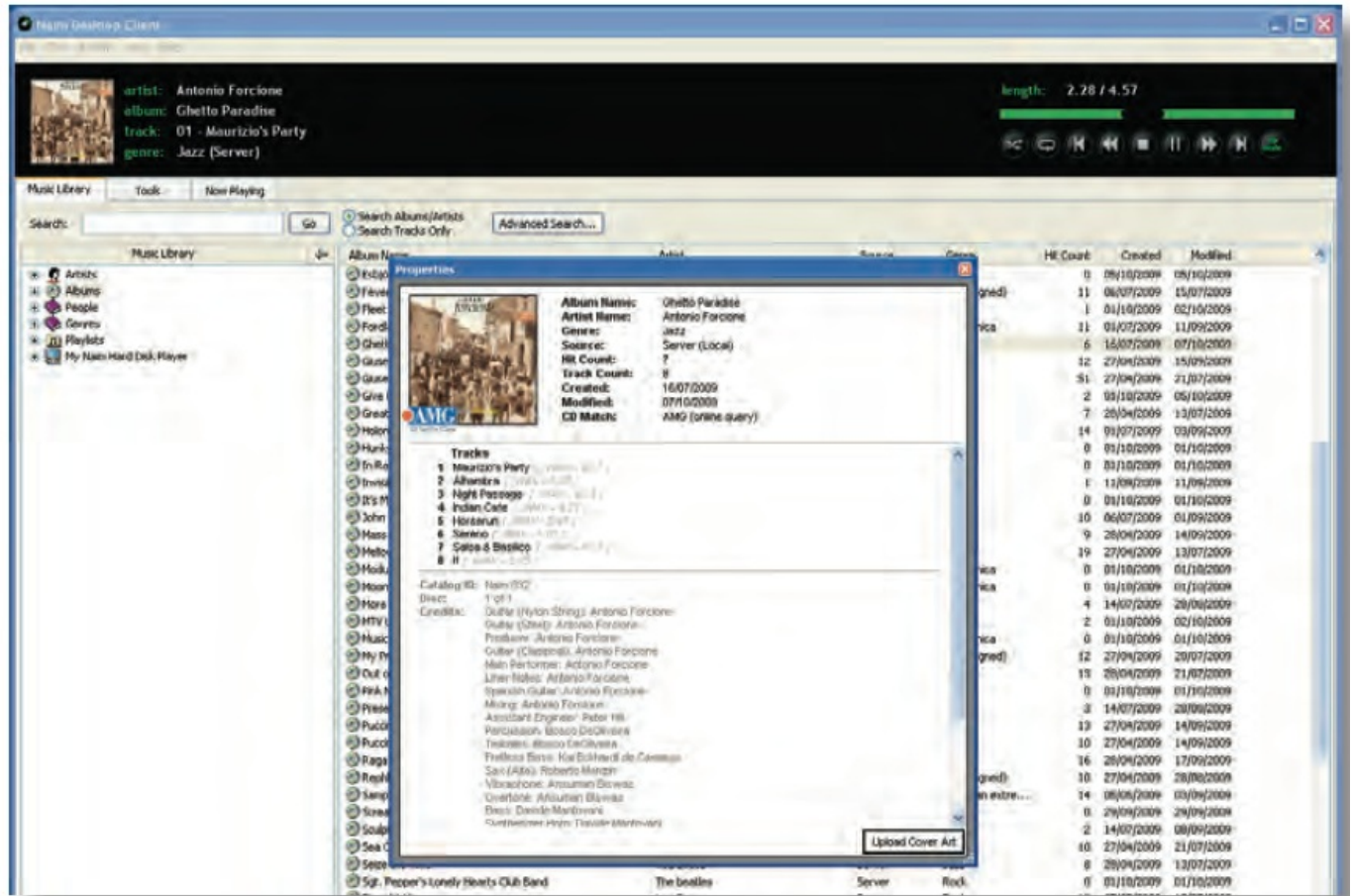
Album Properties

- The Desktop Client Application holds more information about specific albums than is displayed in the Player Mode or Maintenance Mode views. The information can be displayed by selecting the album's properties.
- To access an album's properties first right-click on the album name. A pop-up window will display as illustrated in Diagram 1.16.
- **Note:** As well as providing access to properties the right-click pop-up menu also provides access to a variety of other functions.
- Clicking on properties displays the additional information for the album concerned as illustrated in Diagram 1.17.

Selecting Album Properties



Displaying Album Properties



Tools and Utilities

- The Tools tab provides a set of hard disk player maintenance and setup utilities that can be selected and their contents expanded by clicking on their associated + graphics.
- Selecting a utility will open a dialogue box in the right-hand window that either provides information or can be used to specify a variety of hard disk player and network setup parameters.
- The purpose and use of each tool and utility are described in the following paragraphs. Diagram 1.19 illustrates the full list of tools and utilities.

Ripping Monitor

- Display real-time progress of CD ripping.

Ripping Alerts

- Displays the server's ripping log including any alerts.

Zone Maintenance

- Enables network zone definition and maintenance.

Move Album Monitor

- Displays real-time progress of album move operations between storage locations.

Backup Monitor

- Displays backup statistics and enables backup settings to be defined.

Backup Scheduler

- Enables manual backups to be initiated and automatic backups to be programmed.

System Status

- Displays various system status reports.

System Messages

- Displays any system messages.

Lookup Messages

- Displays any CD data lookup messages.

System Settings

- Displays and enables editing of various system settings.
- **Note:** The HDX internal clock and calendar can be adjusted here.

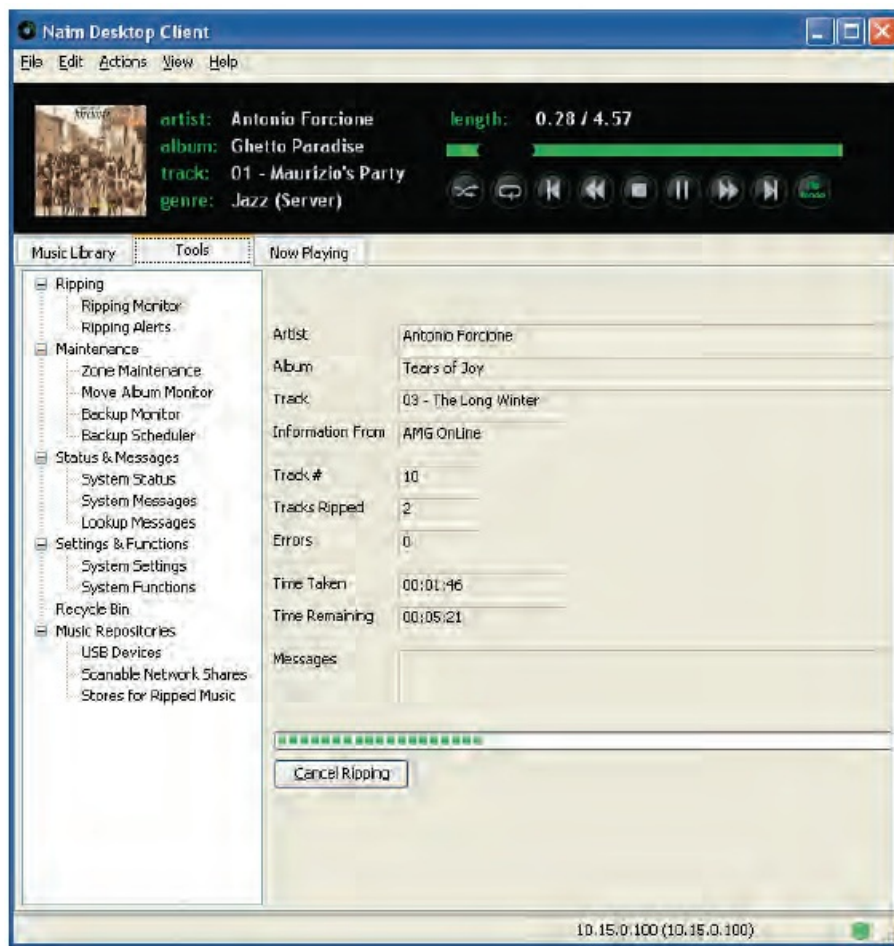
System Functions

- Provides image purge, database rebuild functions, and version info. Only use if instructed to do so by Naim Technical Support.

Recycle Bin

- Enables items within the recycle bin to be either purged or restored to the library.

Tools and Utilities



USB Devices

- Displays a list of current or previously connected USB devices.

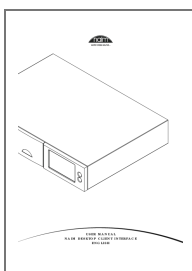
Scannable Network Shares

- Displays a list of current or previously connected network devices.

Stores For Ripped Music

- Displays a list of currently enabled Music Stores and their order of priority.
- **Naim Audio Limited, Southampton Road, Salisbury, England SP1 2LN**
- **Tel: +44 (0)1722 426600 Fax: + 44 (0)871 2301012 W: www.naimaudio.com Part No. 12-001-0096 Iss. 1**

Documents / Resources



[naim Desktop Client Interface](#) [pdf] User Manual
Desktop Client Interface, Desktop Client, Client, Client Interface, Interface

References

-  [British High-End Audio | Naim Audio](#)
- [User Manual](#)

[Manuals+](#), [Privacy Policy](#)

This website is an independent publication and is neither affiliated with nor endorsed by any of the trademark owners. The "Bluetooth®" word mark and logos are registered trademarks owned by Bluetooth SIG, Inc. The "Wi-Fi®" word mark and logos are registered trademarks owned by the Wi-Fi Alliance. Any use of these marks on this website does not imply any affiliation with or endorsement.