



n-com SPCOM00000048 Helmet Intercom System User Manual

[Home](#) » [N-Com](#) » n-com SPCOM00000048 Helmet Intercom System User Manual 

Contents

- [1 n-com SPCOM00000048 Helmet Intercom System](#)
- [2 INSTRUCTIONS FOR REPLACING](#)
- [3 Documents / Resources](#)
- [4 Related Posts](#)



n-com SPCOM00000048 Helmet Intercom System



INSTRUCTIONS FOR REPLACING



Fig. 1

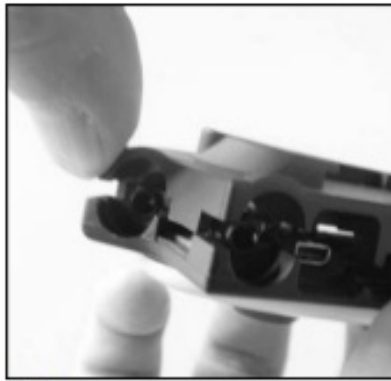


Fig. 2

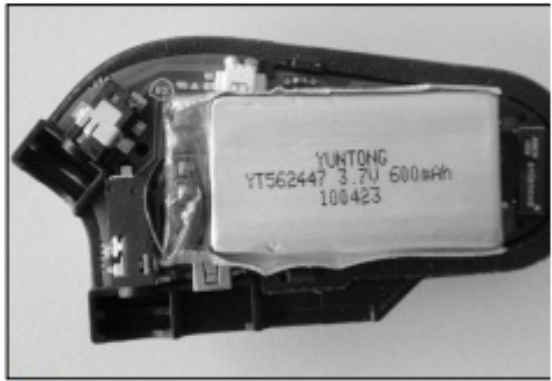


Fig. 3

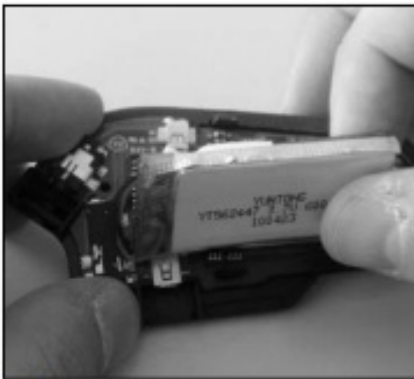


Fig. 4

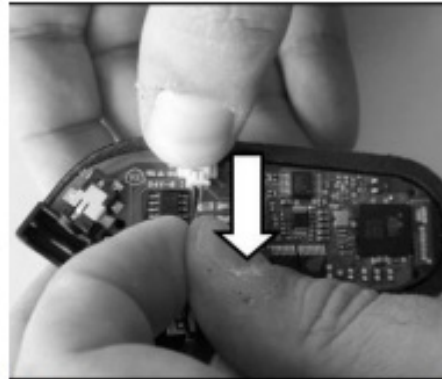


Fig. 5

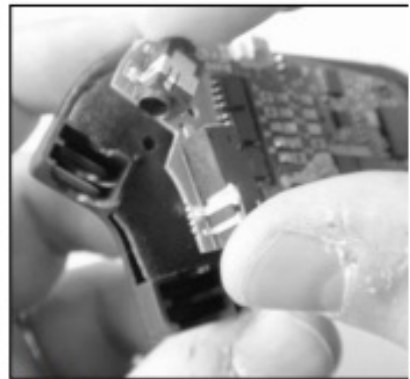


Fig. 6

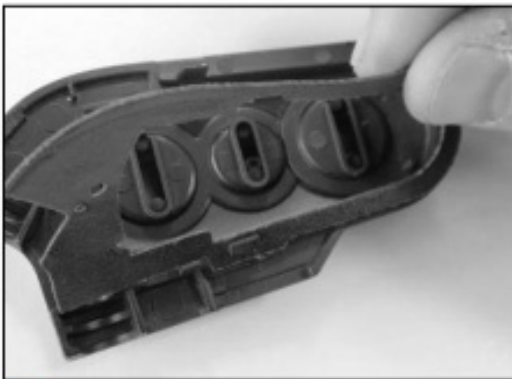


Fig. 7

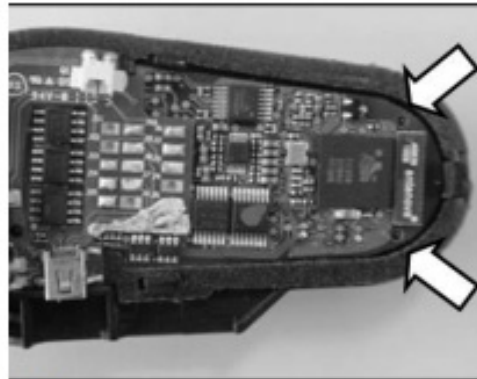


Fig. 8

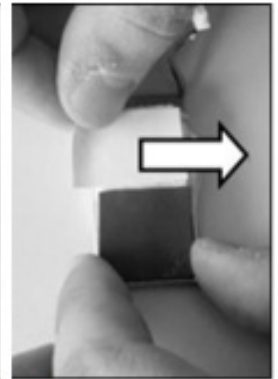


Fig. 9

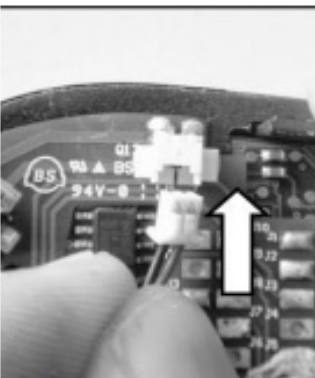


Fig. 10



Fig. 11




Fig. 12

1. Unscrew the screw at the back of the e-box MULTI (Fig. 1).
2. Remove the cover as shown in the picture (Fig. 2 – 3).
3. Lift the battery with care, as the battery is attached to the circuit board through the double-sided tape (Fig. 4).
4. Disconnect the battery with care, with special attention to the battery connector. With one hand hold the fixed connector which is soldered onto the circuit board, as shown in the picture (Fig. 5).

5. Remove the circuit board from its housing (Fig. 6).
6. Remove the seal from its housing and replace the spare part (Fig. 7).
7. Reposition the PCB, paying special attention to the 2 pegs (Fig. 8).
8. Take a new battery and remove the sheets double-sided tape (Fig. 9).
9. Connect the battery to the connector soldered onto the PCB (Fig. 10).
10. Place the battery as shown in the picture. The battery should be placed as far away as possible from the component circled in the picture (Fig. 11).
11. Close the cover, matching the holes for the connectors (Fig. 12).
12. Fix the screw back on. Do not to overtighten the screw to avoid damaging the component. If possible, use a torque screwdriver (0.5N/m).

Documents / Resources

	<p>n-com SPCOM00000048 Helmet Intercom System [pdf] User Manual SPCOM00000048 Helmet Intercom System, SPCOM00000048, Helmet Intercom System, Intercom System</p>
-----------------------------------------------------------------------------------	--------------------------------------------------------------------------------------------------------------------------------------------------------------------------------------