



# Mytrix MTNSPC-M01 Wireless Pro Controllers User Manual

[Home](#) » [mytrix](#) » Mytrix MTNSPC-M01 Wireless Pro Controllers User Manual 

## Contents

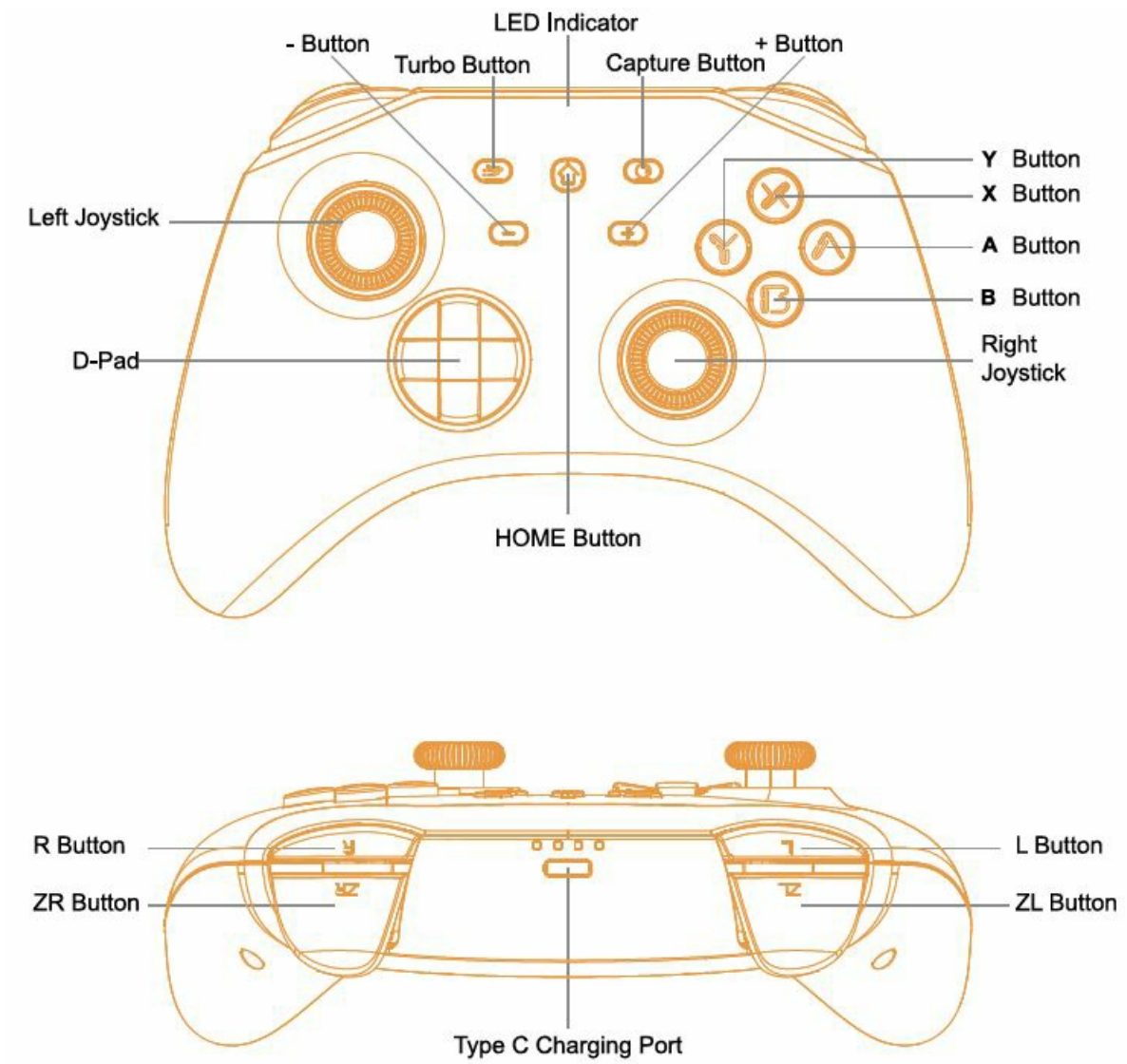
- [1 Mytrix MTNSPC-M01 Wireless Pro Controllers](#)
- [2 OVERVIEW](#)
- [3 Specification](#)
- [4 Package Includes](#)
- [5 Adjust Vibration Intensity](#)
- [6 Multi-Platform Wireless Connection](#)
- [7 Functions Comparison](#)
- [8 Charging Instructions](#)
- [9 Warranty](#)
- [10 Appendix](#)
- [11 CONTACT](#)
- [12 Documents / Resources](#)
  - [12.1 References](#)

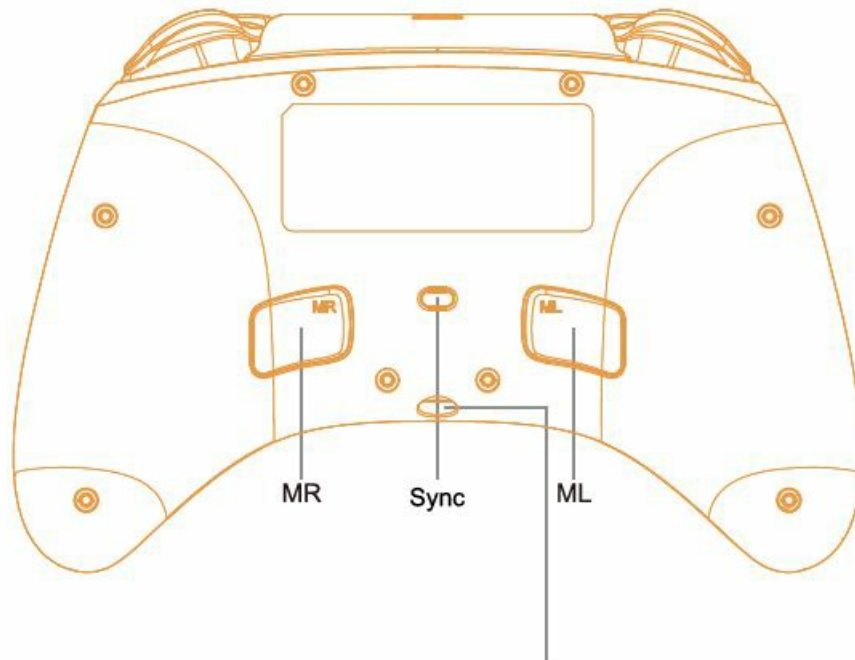


**Mytrix MTNSPC-M01 Wireless Pro Controllers**



## OVERVIEW





3.5mm jack(only when the controller connects to console via cable)

## Specification

- **Input Voltage:** 5V, 350mA
- **Working Voltage:** 3.7V
- **Battery Capacity:** 600mAh
- **Product Size:** 154\*59\*111mm
- **Weight:** 250 ± 10g
- **Material:** ABS

## Package Includes

- 1x Controller
- 1x USB Type-C Charging Cable
- 1x User Manual

## Console Wireless Connection

**Please Note:** Please make sure that aeroplane mode on the console is turned off before use.

## First-Time Pairing

1. From the HOME menu of the console, select Controllers, then Change Grip/Order.
2. Press and hold the “SYNC” button on the bottom of the controller for at least five seconds to power on the controller until all 4 LEDs flash. Once paired, all 4 LEDs will remain lit, and the controller will be shown on the screen.



## Wake Up and Reconnect

### Once the controller has paired with the console

- If the console is in SLEEP mode, the HOME button on the controller can wake up both the controller and the console.
- If the console is on, any button will wake up the controller, which will allow the controller to reconnect to the console.

### If unable to connect, please follow the three steps

1. Turn off Airplane mode on the console
2. Remove the controller's information on the console (System Setting > Controllers and Sensors > Disconnect Controllers)
3. Follow the First-Time Pairing steps

## Controller Auto Sleep

- On a wireless connection, press and hold the home button for 3 seconds, the controller will be disconnected and turn on sleep mode.
- If no button is pressed within 5 minutes, the controller will automatically sleep.
- The controller will enter sleep mode when the console is in sleep mode.

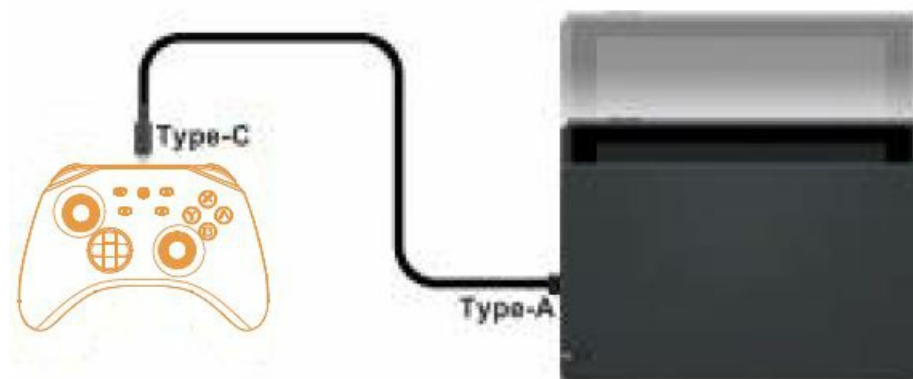
## Console Wired Connection

1. Turn on the "Pro Controller Wired Communication" in the console: System Settings > Controllers and Sensors > Pro Controller Wired Communication > On

**Please Note:** The "Pro Controller Wired Communication" must be turned on BEFORE connecting the controller and the Dock with the cable.



- Set the Console on the dock to activate TV mode. Connect the Dock and the controller directly using the USB Type C to A cable.



- Press the HOME button > Controllers > Change Grip/Order.

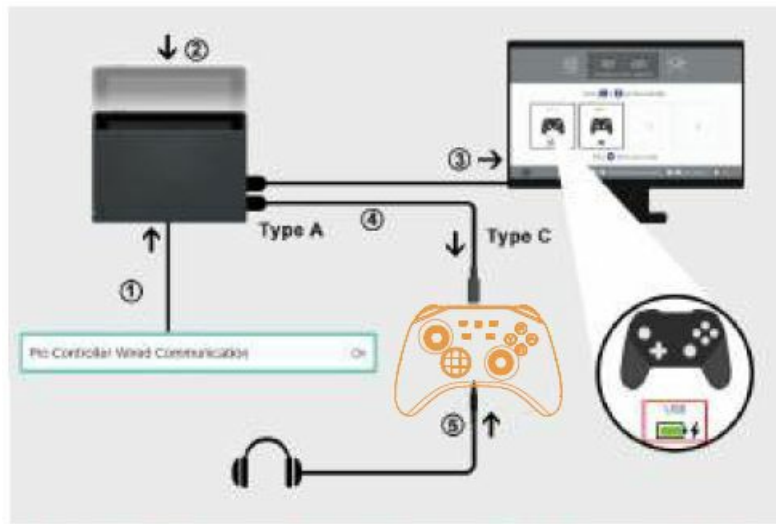
The controller icon with the “USB” displayed on the screen indicates the wired connection is successful.



### Audio Function

The controller has a 3.5mm audio port and supports 3.5mm wired headsets or microphones.

**Please note:** The audio function will ONLY work in Wired Connection Mode with a console. It will NOT work during wireless connection, or when the controller is wired to a PC.



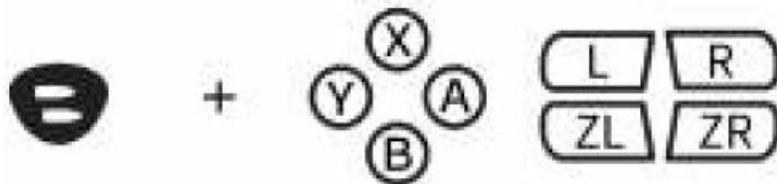
**Please Note:** The “Pro Controller Wired Communication” must be turned on BEFORE connecting the controller and the Dock with the cable.

1. System settings > Controllers and Sensors > Pro Controller Wired Communication > On.
2. Set the console on the dock to TV mode.
3. Connect the Dock and the controller with the USB cable.
4. The icon with “USB” displayed indicates the wired connection is successful.
5. Plug the 3.5mm audio jack into the audio port on the bottom of the controller.

### Turbo and Auto-fire

Buttons Available to Set the Turbo Function:

A/B/X/Y/LIZL/RIZR button



### Set Up the Turbo Function

1. Manual Turbo Function: Press and hold the Turbo button, then press any function button ONCE to turn on the “Manual Turbo Function”
2. Auto Turbo Function: Repeat the first step above to switch to the “Auto Turbo Function”
3. Turn Off the Turbo Function: Repeat the first step after the “Auto Turbo Function” has been set.

### Turn Off All the Turbo Functions for All Buttons

Press and hold the Turbo button for 6 seconds until the controller vibrates, which will turn off the turbo functions of all buttons.

### There Are Three Levels For the Turbo Speed

- **Slow:** 5 shots/s, the corresponding LED indicators will flash at a slow speed.
- **Medium:** 15 shots/s, the corresponding LED indicators will flash at a medium speed. (Default Level)
- **Fast:** 25 shots/s, the corresponding LED indicators will flash at a fast speed.

## Adjust the Turbo Speed Levels

- Press and hold the Turbo button, push down the right joystick to decrease one grade of turbo speed; and pull up the right joystick to increase one grade of turbo speed.



## You Can Test and Check the Turbo Settings on a Console

- Settings > Controllers and Sensors > Test Input Devices > Test Controller Buttons

## Adjust Vibration Intensity

### There Are Four Levels of Vibration Intensity

None, weak, medium, strong.



## Adjust the Vibration Intensity

- Press and hold the Turbo button, and move the left joystick UP to increase one grade of vibration intensity.
- Move the left joystick DOWN to decrease one grade of vibration intensity.

## Macro Definition Function

There are two macro-enabled programmable buttons “ML/MR ” on the back of the controller. Macro buttons can be programmed into function buttons or button sequences respectively.

### Macro Buttons Can Be Programmed to A/B/X/Y/L/ZL/R/Z-

R/up/down/left/right buttons. The default mapping buttons of ML&MR are A&B.

### Enter the Macro Definition Mode and Set Up the Button(s)

- Press and hold the “Turbo” + “ML” / “MR” together for 2 seconds, LED2-LED3 will stay lit. The controller is ready to record the macro setting.



- Press the function buttons that need to be set sequentially, the controller will record the button with the time interval between each button pressed.
- Press the macro button ML or MR shortly to save, and the corresponding player LED light will stay lit. The macro definition setting has been saved. When the controller re-connects to the console, it will automatically apply the last macro definition setting.

## Clear the Macro Definition Settings

Press the “Turbo” + “ML” / “MR” together for 2 seconds to enter settings mode, the LED2-LED3 will stay lit, then directly exit the setting mode by pressing the same ML / MR buttons. The corresponding player LED will light up again. The macro definition setting within the current slot will be removed.

## Example

- Hold down the “Turbo” and the “ML” button together for 2 seconds until the LED2-LED3 lights stay lit.
- Press the “B” button, after 1 second, press “A”, after 3 seconds, press “X”
- Press the “ML” button to save and exit the setting mode
- The button “ML” now is set to perform the actions of B (after 1s) → A (after 3s) → X

## You Can Test and Check the “ML/MR ” Settings on a Switch Console

- Settings > Controllers and Sensors > Test Input Devices > Test Controller Buttons

## RGB Lights ON/OFF

- Turn on/off ABXY button lights:
- Hold down the “L1+L2” together for 6 seconds
- Turn on/off Joystick lights:
- Hold down the “ZL +ZR” together for 6 seconds

## RGB Brightness Settings

- Adjust the brightness:
- Hold the “then press the “Up” button on the D-Pad to increase the light brightness
- Hold the “-” then press the “Down” button on the D-Pad to decrease the light brightness

## RGB Color Modes

- There are three RGB light display modes. Hold the “+” button then press the “Left” button on the D-pad to switch between the three light modes.
- Mixed-Color Wave (Default Mode)
- The default Mode is a cyclic variation of the mixed colour when the controller is turned on.

## Colour Breathing Mode

The colour automatically breathes and changes every second following the colour breathing sequence: Green Yellow → Red → Purple Blue Cyan Warm White(for Touro) or Cool White(for Zero-Kirin)

## Single Color Mode

Steady single color; Hold the “+” then press the “Right” button to switch to the next steady color within the Single Color Mode.

## Joystick Operation RG Mode

- Hold the “-” then press the “Left” button to enter the Joystick Operation RGB Mode, the joystick RGB lights will

light up following the moving direction of the joystick and will be off if the joystick has no movements.

- The RGB Color Mode is still adjustable when the Joystick Operation RGB Mode is on.
- Please make sure the Joystick lights are active before trying to enter the Joystick Operation RGB Mode (Hold down the “ZL +ZR” together for 6 seconds to switch on/off the joystick lights)

## **Multi-Platform Wireless Connection**

- The controller could wirelessly connect to multiple platforms including Windows PC, Steam Deck, PC STEAM platform,
- Android (Android 10.0 & above), and iOS (iOS 13.4 & above) devices. Please select your preferred connection mode and refer to the corresponding steps below.

### **Pro Controller Mode**

1. Press the “Sync” pairing button, the four LED lights will all flash in turn.
2. Turn on your device’s Bluetooth and select the detected controller: Pro Controller.
3. The first LED (LED1) will have a steady light after a successful connection.

### **Xbox Mode**

1. Press the “Sync” and “X” buttons together for 3 seconds, the first and fourth LED lights (LED1 and LED4) will flash.
2. Turn on your device’s Bluetooth and select the detected controller: Xbox Wireless Controller.
3. The first and the fourth LED lights (LED1 and LED4) will have a steady light after a successful connection.

**Please Note:** In Xbox mode, the functions of buttons A and B are reversed, X and Y are reversed.

### **Android Mode**

1. Press the “Sync” and “Y” buttons together for 3 seconds, and the second and third LED lights (LED 2 and LED3) will flash.
2. Turn on your device’s Bluetooth and select the detected controller: Mytrix-M01.
3. The second and third LED lights (LED 2 and LED3) will have a steady light after the successful connection.

## **Multi-Platform Wired Connection**

### **Pro Controller Mode**

1. Press down the right joystick vertically and connect the controller to the Windows PC/Steam Deck/PC STEAM platform with the USB cable. The first LED light (LED1) will have a steady light and it will flash when the controller is charging. Please Note: Please press the joystick vertically when plugging in the USB cable to avoid causing the joystick drifting issue; In case of the drifting, please try moving the joysticks in circle to reconcile.
2. It will be recognized as the “Pro Controller” and can be used for supported games.

### **Xbox 360 Mode (X-INPUT)**

1. Connect the controller to a Windows PC/Steam Deck with the USB cable, it will automatically be recognized as

“Xbox 360 Controller”.

- The first and the fourth LED lights (LED1 and LED4) will have a steady light. The LED will flash when the controller is charging at the same time.

**Please Note:** In the X-INPUT mode, the functions of buttons A and B are reversed, X and Y are reversed.

### Functions Comparison

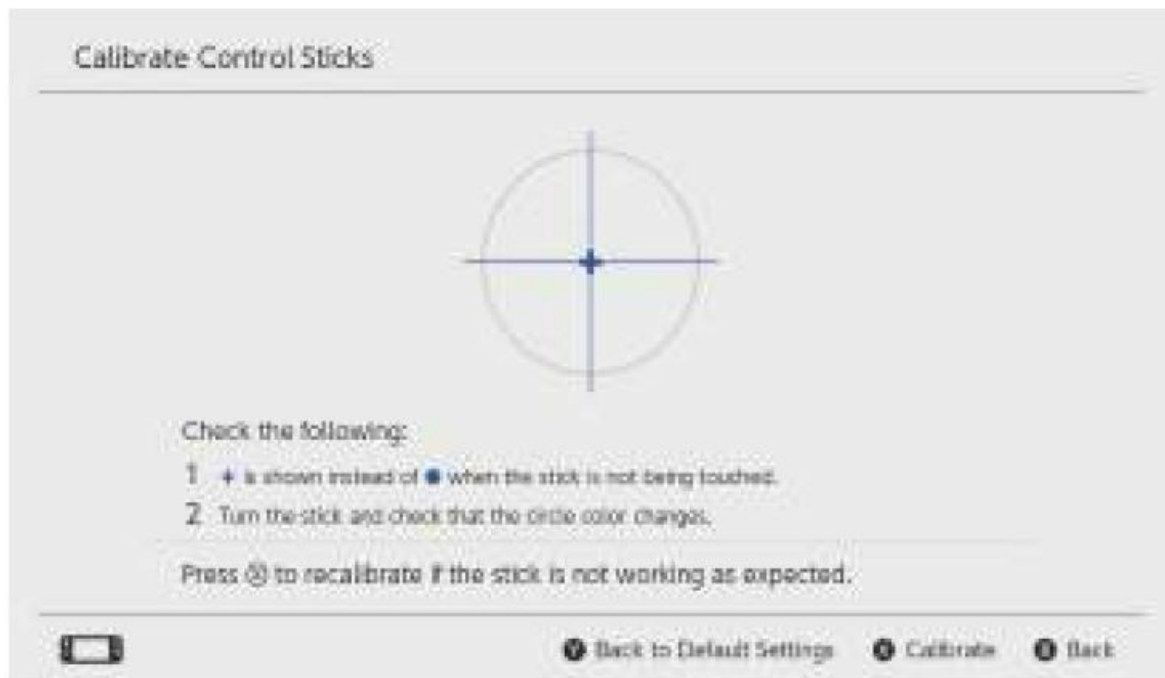
Platform	Screenshot	Audio Function	Motion	Vibration	Macro	Turbo
Console Wireless	✓	✗	✓	✓	✓	✓
Console Wired	✓	✓	✓	✓	✓	✓
PC Xbox (X-INPUT)	✗	✗	✗	✓	✓	✓
PC STEAM (Pro Controller)	✓	*	✓	✓	✓	✓
Android (Mytrix-M01)	✗	✗	✗	✓	✓	✓
IOS (Xbox Wireless Controller)	✗	✗	✗	✓	✓	✓

### Charging Instructions

- The controller can be charged using the console charger, the Dock, 5V 2A power adapter, or USB power supplies with the USB Type C to A cable.
- If the controller is connected with the console while charging, the corresponding channel LED lights) on the controller will flash. The channel LED lights) will stay lit if the controller has been fully charged.
- If the controller is not connected with the console while charging, the 4 LED lights will flash. The LED lights will go off when the controller has been full charged.
- When the battery is low, the corresponding channel LED light(s) will flash; the controller will turn off and need to be charged if the battery is exhausted.

### Calibrate the Control Sticks

- Press the HOME button > System Settings > Controllers and Sensors > Calibrate Control Sticks > Press the stick you want to calibrate
- Follow the on-screen instructions to verify the controller functionality



### Calibrate Motion Controls

Press the HOME button > System Settings > Controllers and Sensors > Calibrate Motion Controls > Calibrate the Controllers > Put the controller on a horizontal plane and hold “-” or “+” on the controller you want to calibrate.

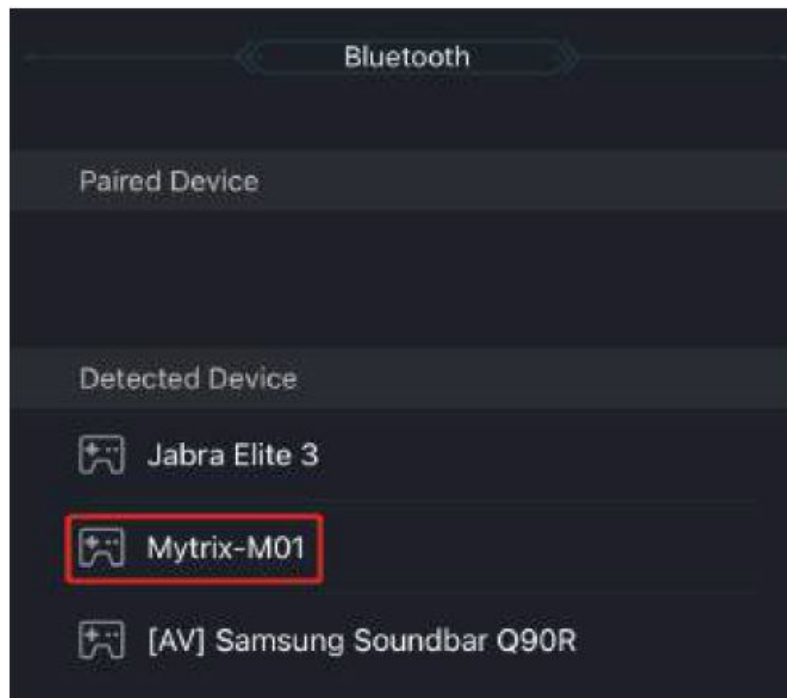
### Please Note

- When using the wireless controller for the first time, it is recommended to have both the Controller Sticks and Motion Controls calibrated before usage.
- If the calibration fails, please press the “Y” button to restore the settings and press the “X” button to repeat the calibration steps. Power off the controller once the calibration is finished, then restart the controller and console.

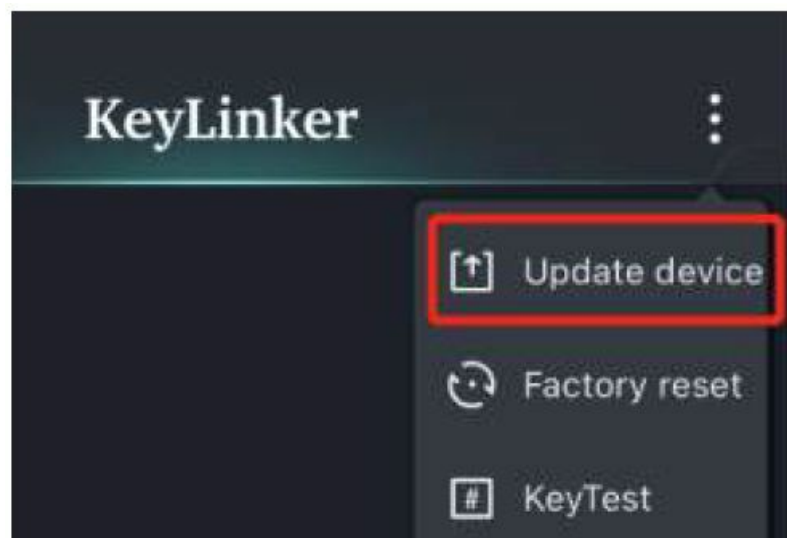
### Firmware Update

Please follow these steps to update your controller’s firmware through the “KeyLinker” app:

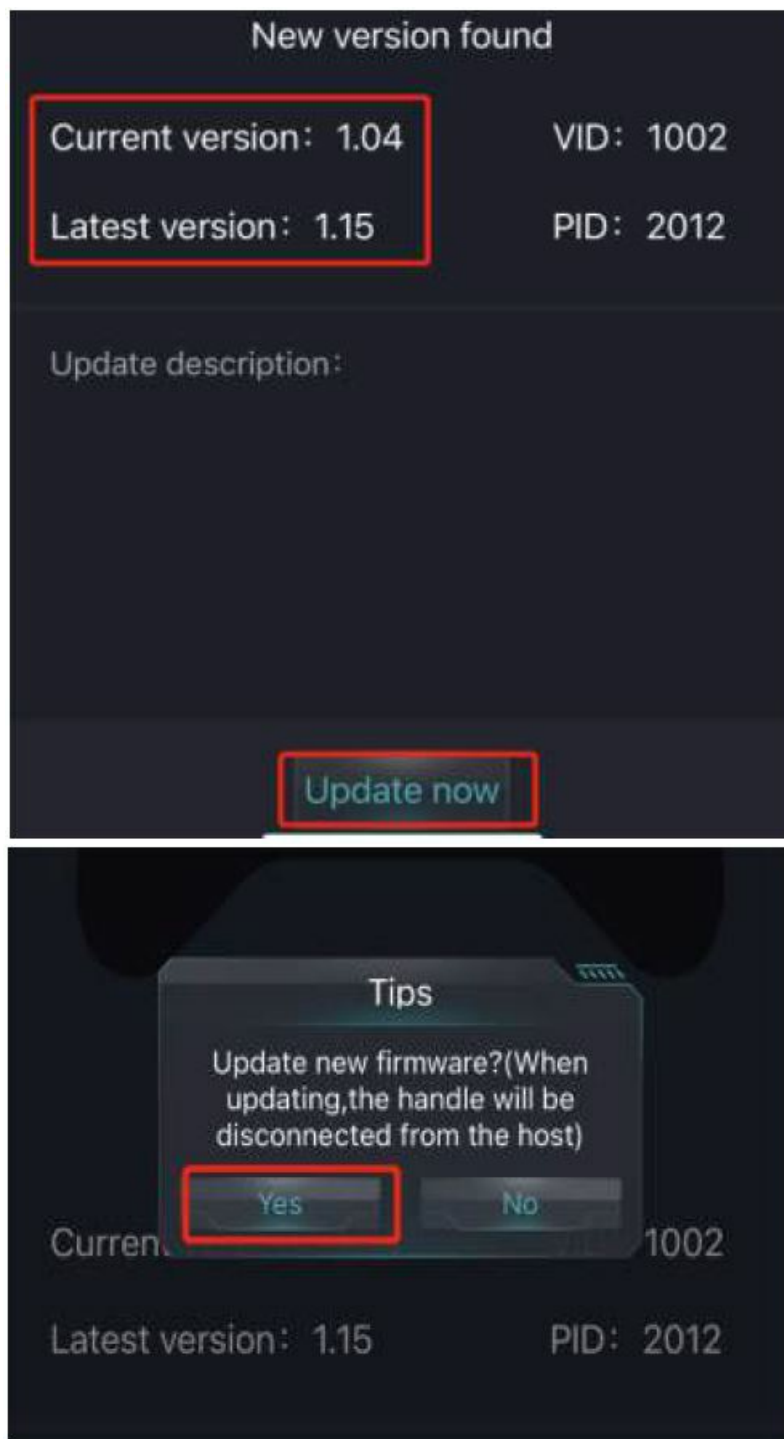
- **Step 1:** Download the “KeyLinker” app from your mobile app store.
- **Step 2:** Press and hold the SYNC button on the controller until the indicators flash quickly.
- **Step 3:** Turn on your mobile device’s Bluetooth and pair it with the controller named “Pro Controller”.
- **Step 4:** Open the “KeyLinker” app and refresh it. Connect with the device “Mytrix-M01” to start using the app’s features.
- Now you can customize the functions and upgrade the firmware of your controller through the app.



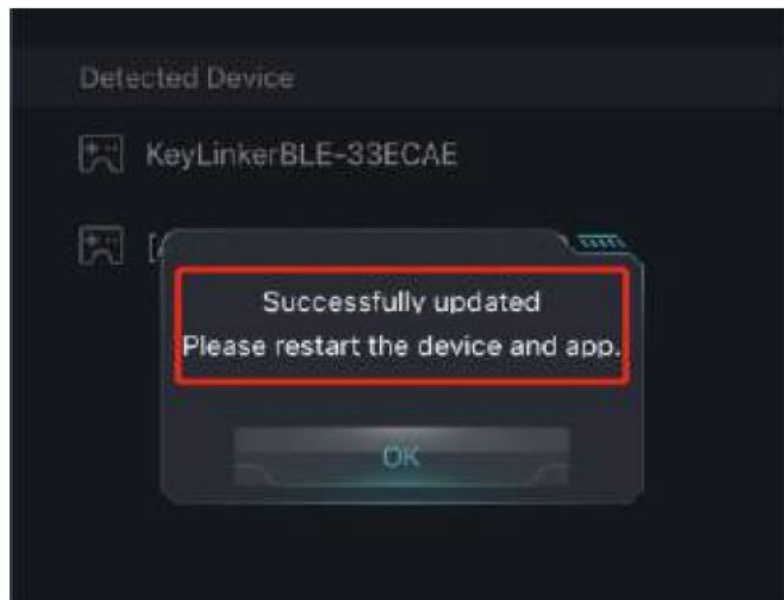
- **Step 5:** Select “Update Device” from the menu of the APP.



- **Step 6:** If a new version is available, click “Update Now” and then select “Yes” when the updating tips pop-up.



- **Step 7:** The firmware will be updated successfully and then restart your device and app.





**Please Note:** The upgrade firmware is to fix some occasional bugs. You don't need to update it unless your controller has problems in use. There is no functional difference between the upgrade versions.

## Warranty

- The product comes with a 1-year limited warranty.
- Our goal is to achieve total customer satisfaction, we will do our best to understand our customer's requirements and always meet the requirements.
- If you have any questions, please do not hesitate to contact us via [cs@mytrixtech.com](mailto:cs@mytrixtech.com). We will be more than happy to assist you.

## Appendix

Action	Duration	Type	Setting
Home	Hold for 10 Seconds	Reset	Reset the controller hardware
Turbo +  (Left Joystick Up)	Hold the Turbo and pull up the L Joystick	Vibration	Increase the controller vibration intensity
Turbo +  (Left Joystick Down)	Hold the Turbo and pull down the L Joystick		Decrease the controller vibration intensity
L1 + L2	Hold together for 6 Seconds	RGB	Turn on/off ABXY button lights
ZL + ZR	Hold together for 6 Seconds		Turn on/off Joystick lights
+	Hold the  and press		Increase the RGB light brightness
+	Hold the  and press		Decrease the RGB light brightness
+	Hold the  and press		Change between the three RGB light modes
+	Hold the  and press		Change the color within the Single Color Mode
+	Hold the  and press		Enter/Exit the Joystick Operation RGB Mode
A/B/X/Y/L1/L2/R1/R2 + Turbo	Hold the targeted button, press Turbo	Turbo	Change between the Manual Turbo - Auto Turbo - Turbo Off

Turbo	Hold for 6 Seconds	Turbo	Clear the Turbo settings for all the buttons
Turbo + ML for two seconds, Buttons need to be set to, ML		Macro	Set the macro definition (map) for ML
Turbo + MR for two seconds, Buttons need to be set to, MR			Set the macro definition (map) for MR
Turbo + ML for two seconds, ML			Clear the macro definition (map) for ML
Turbo + MR for two seconds, MR			Clear the macro definition (map) for MR
Turbo + 	Hold together for 6 Seconds	Factory Reset	Reset to the factory settings (ML/MR to A/B, 70% Vibration, Turbo speed 15shots/s)
Turbo + 	Press together briefly	Battery	Check the controller battery level with the LED indicators

## CONTACT

- Company: Mytrix Technology LLC
- Customer Service: +1 (800) 658-1606
- Email: [cs@mytrixtech.com](mailto:cs@mytrixtech.com).
- Address: 13 Garabedian Dr. Unit C, Salem NH 03079
- [www.mytrixtech.com](http://www.mytrixtech.com).

## Documents / Resources

	<a href="#">Mytrix MTNSPC-M01 Wireless Pro Controllers</a> [pdf] User Manual B1GKyY5BDnL, MTNSPC-M01 Wireless Pro Controllers, MTNSPC-M01, Wireless Pro Controllers, Pro Controllers, Controllers
---	--

## References

- [User Manual](#)