



Mytrix MTNSPC C02 Perry Yellow Bear Wireless Controller User Manual

[Home](#) » [mytrix](#) » Mytrix MTNSPC C02 Perry Yellow Bear Wireless Controller User Manual 

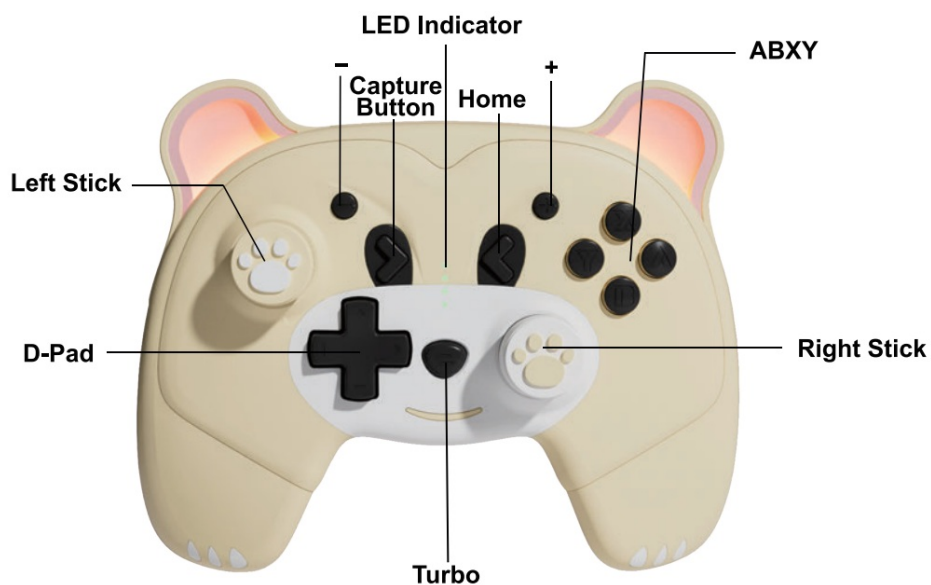
Mytrix MTNSPC C02 Perry Yellow Bear Wireless Controller User Manual



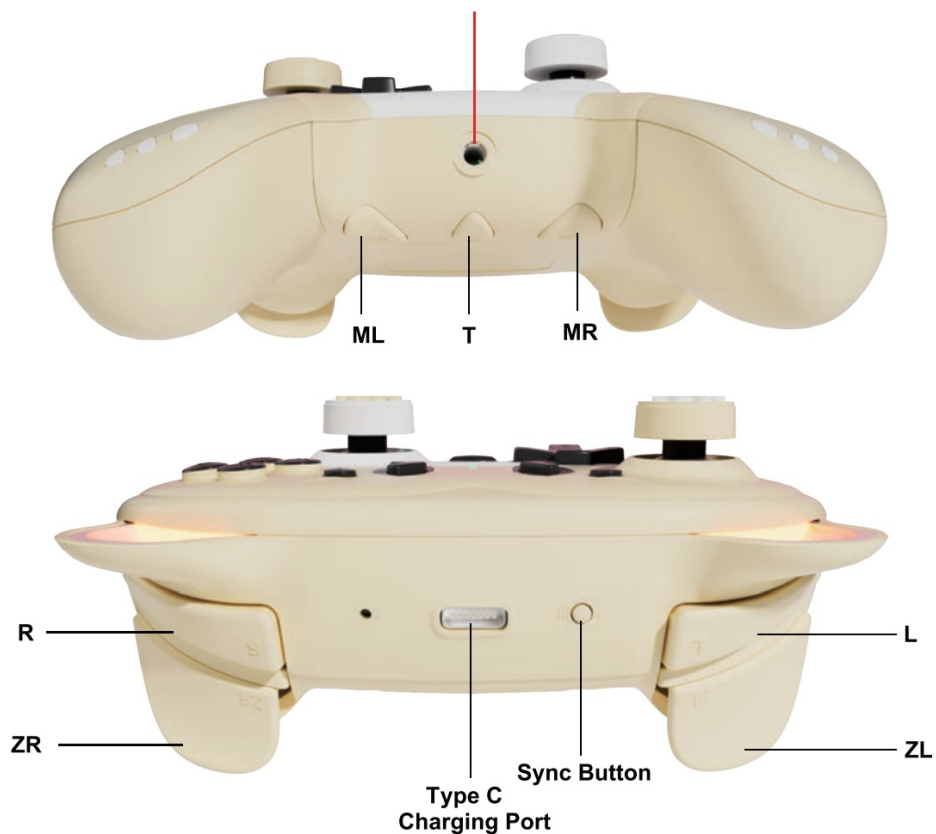
Contents

- [1 Product overview](#)
- [2 Specification](#)
- [3 Package Includes](#)
- [4 Wireless Connection & Wake Up Function](#)
- [5 Wake Up and Reconnect](#)
- [6 Controller Auto Sleep](#)
- [7 Wired Connection](#)
- [8 Audio Function](#)
- [9 Adjust Vibration Intensity](#)
- [10 Macro Definition Function](#)
- [11 Wired Connection on Windows PC](#)
- [12 Functions Comparison](#)
- [13 Adjust the Ears Light Modes](#)
- [14 Charging Instructions](#)
- [15 Calibrate the Control Sticks](#)
- [16 Warranty](#)
- [17 Company Information](#)
- [18 Documents / Resources](#)
- [19 Related Posts](#)

Product overview



3.5mm jack(only works when controller connects console via cable)



Specification

Input Voltage: 5V, 300mA.

Working Voltage: 3.7V

Battery Capacity: 300mAh Product Size: 130*55*102mm

Weight: 155+5g

Material: ABS

Package Includes

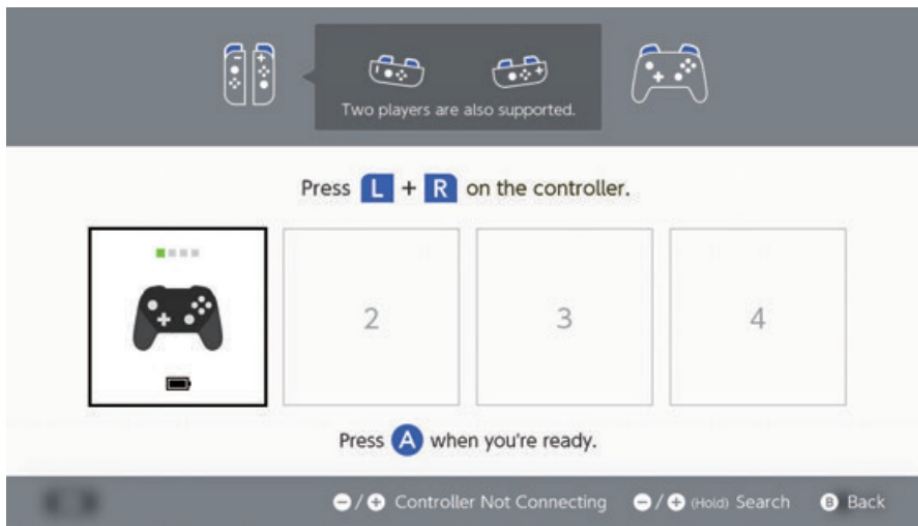
- 1x Controller
- 1x USB Type-C Charging Cable
- 1x User Manual

Wireless Connection & Wake Up Function

Please Note: Please make sure the AIRPLANE mode of the console is turned off before starting using.

First-Time Pairing:

1. From the HOME menu of the console, select Controllers, then Change Grip/Order.
2. Press and hold the "SYNC" button on the top of the controller for at least five seconds to power on the controller until all 4 LEDs flash. Once paired, all 4 LEDs will remain lit, and the controller will be shown on the screen.



Wake Up and Reconnect

Once the controller has paired with the console:

- If the console is in the SLEEP mode, the “HOME” button of the controller is able to wake up both the controller and the console.
- If the console is on, all the buttons are able to wake up the controller, the controller will reconnect to the console. If unable to connect, please follow the three steps:

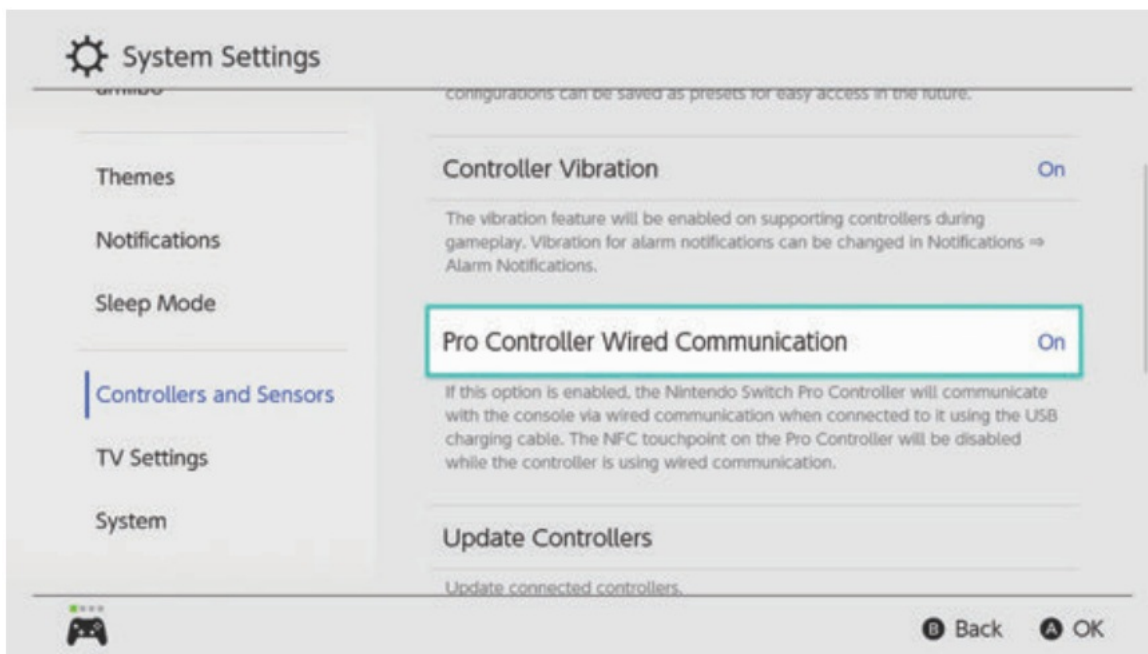
1. Turn off the AIRPLANE mode on the console
2. Remove the controller's information on the NS console (System Setting > Controllers and Sensors > Disconnect Controllers)
3. Follow the First-Time Pairing steps

Controller Auto Sleep

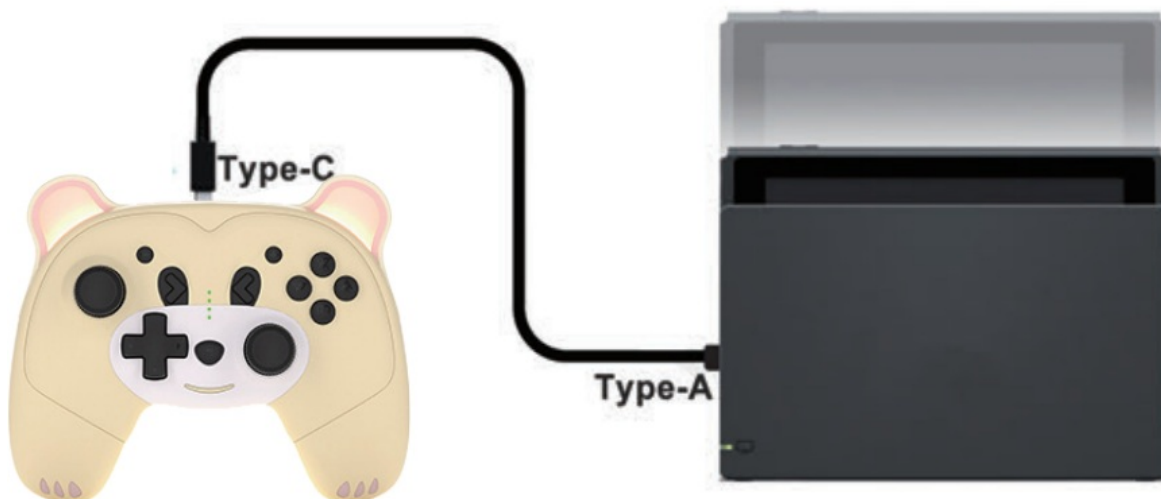
- In the wireless connection, press and hold the HOME button for 3 seconds, the controller will be disconnected and turn into sleep mode.
- If no button is pressed within 5 minutes, the controller will automatically sleep.
- The controller sleeps when the controller is in SLEEP mode.

Wired Connection

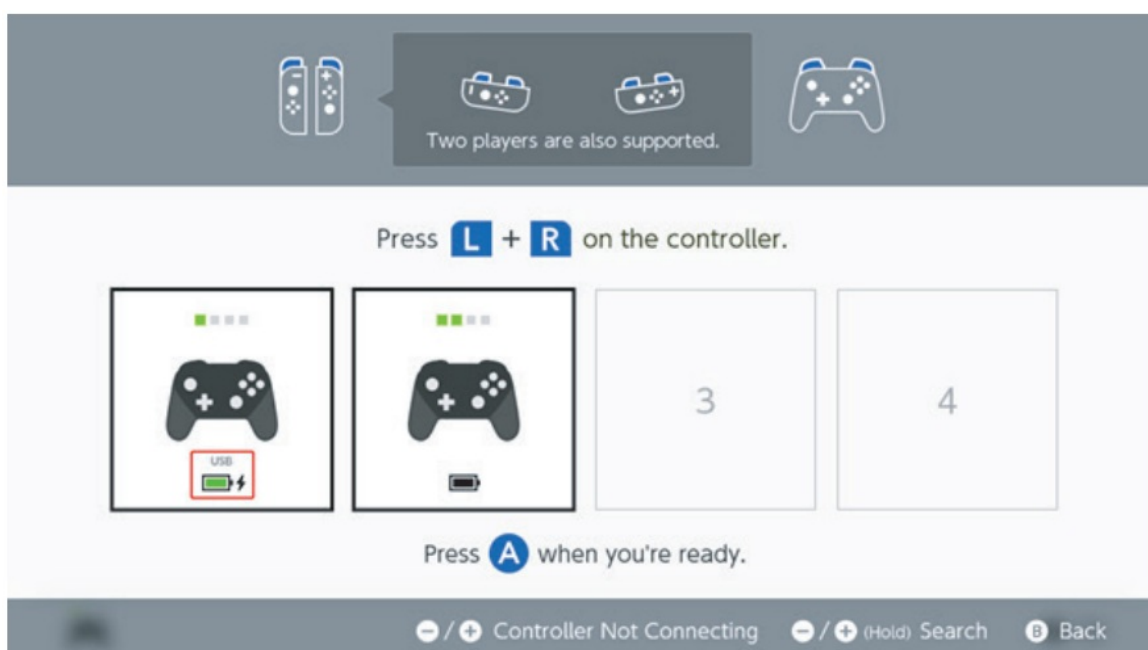
1. Turn on the “Pro Controller Wired Communication” in the console: System Settings > Controllers and Sensors > Pro Controller Wired Communication > On Please **Note:** The “Pro Controller Wired Communication” must be turned on BEFORE connecting the controller and the Dock with the cable,



- Set the Switch console on the Dock for the TV mode. Connect the Switch Dock and the controller directly with the USB Type C to A cable.



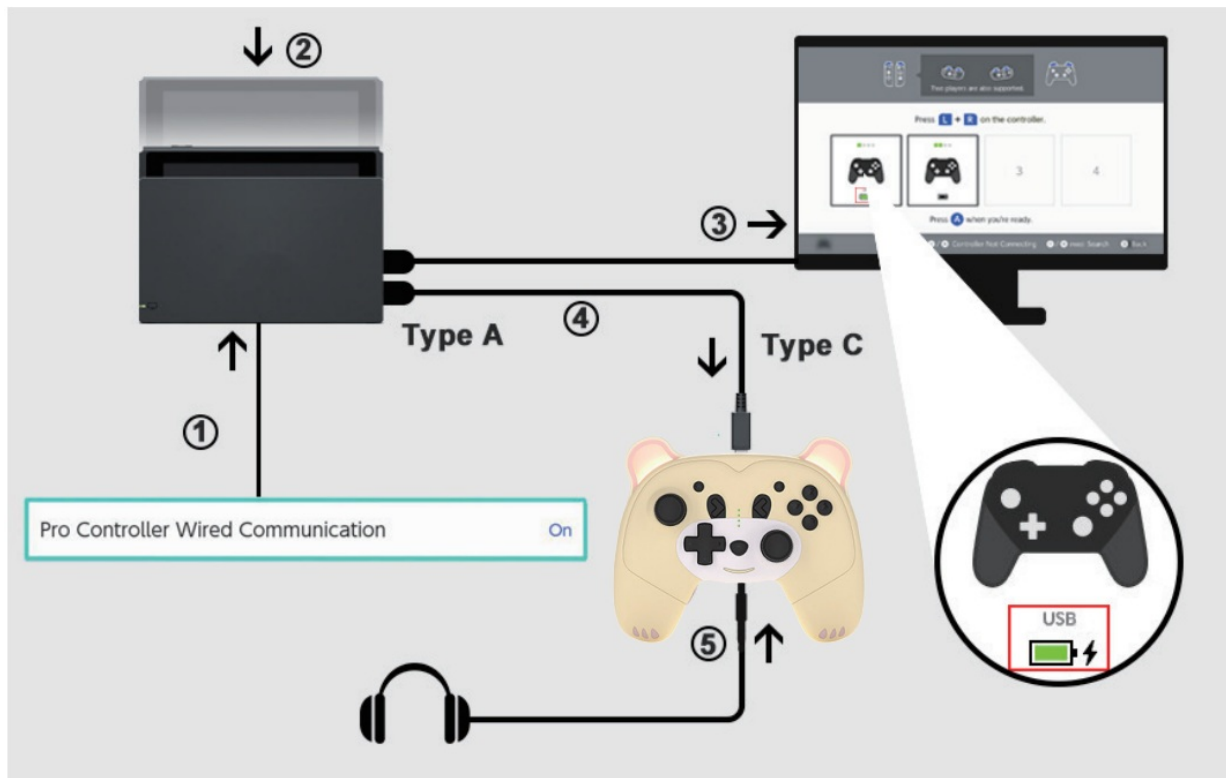
- Press HOME button > Controllers > Change Grip Order. "The controller icon with the "USB" displayed on the screen indicates the wired connection is successful



Audio Function

"The controller has a 3.5mm audio port, supports 3.5mm wired headsets or microphones.

Please Note: The audio function will ONLY work in the Wired Connection Mode with a Switch console. And It will NOT work under the wireless connection or when the controller is wired to a PC.

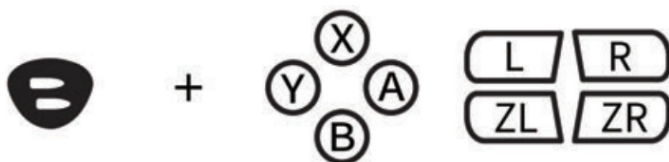


Please Note: The "Pro Controller Wired Communication" must be turned on BEFORE connecting the controller and the Dock with the cable

1. D System settings > Controllers and Sensors > Pro Controller 'Wired Communication > On
2. Set the Switch console on the Dock for the TV mode.
3. 'Connect the Switch Dock and the controller with the USB cable.
4. The icon with "USB displayed indicates the wired connection is successful
5. Plug the 3.5mm audio jack into the audio port on the bottom of the controller

Turbo and Auto-fire

Buttons Available to Set the Turbo Function: ABXY L R ZL ZR button



Set Up the Turbo Function:

1. Manual Turbo Function:

Press and hold the Turbo button, then press any function button ONCE to turn on the "Manual Turbo Function".

2. Auto Turbo Function:

Repeat the first step above to switch to the "Auto Turbo Function".

3. Turn Off the Turbo Function:

Repeat the first step after the "Auto Turbo Function has been set,

Turn off the turbo functions for all buttons:

Press and hold the Turbo button for 3 seconds, then press the subtract * button 1o turn off the turbo functions of al buttons.

There Are Three Levels For the Turbo Speed: «

- **Slow:** 5 shots, the corresponding LED indicators will flash at & slow speeds.
- **Medium:** 12 shots , the corresponding LED indicators will flash ate medium speed. (Default Level)
- **Fast:** 20 cholis, the corresponding LED indicators will flash at a fast speed

Adjust the Turbo Speed Levels:

Press and hold the Turbo button, push down the right joystick to decrease one grade of turbo speed: pull up the right joystick to increase one grade of urban speed.



'You Gan Test and Check the Turbo Settings on a Console:

Settings > Controllers and Sensors > Test Input Devices > Test Controller Buttons

Adjust Vibration Intensity

Theirs Ars Four Levees of Vibration tani None, e, mciun song.



Adjust the Vibration Intensity:

- Press and hold the Turbo button, press the '-' button to decrease one grade of the vibration intensity;
- Press the '+' button to increase one grade of vibration intensity

Macro Definition Function

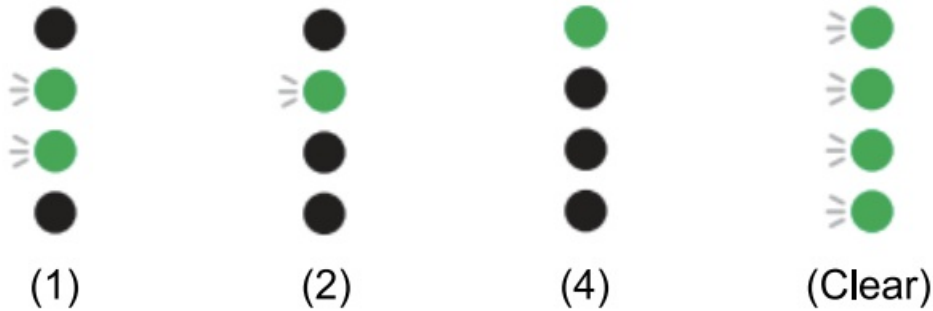
There are two macro-enabled buttons "ML/MR" on the back of the controller, and a macro definition switch button "T". Buttons "ML/MR" can be programmed into function button or buttons sequence respectively.

ML/MR Buttons Can Be Programmed to: A/B/X/Y/L/ZL/R/ZR/up/down/left/right buttons Enter the Macro Definition Mode and Set Up the Button(s):

Enter the Macro Definition Mode and Set Up the Button(s):

1. Press the “T” button on the back of the controller for 3 seconds, the light “LED2-3” will flash slowly.
2. Press the “ML” or “MR” button, the “LED2” light will flash slowly, the controller is ready to record the macro setting.
3. Press the function buttons that need to be set in turn, the controller will record the button and the time interval of each button pressed.
4. Press the “T” button to save, the “LED1” light will keep lit. The macro definition function will be memorized.
When the controller re-connects to the console, it will automatically apply the last macro definition setting.

Clear the Macro Definition Settings: Press and hold the “T” button for 5 seconds until the “LED1-4” lights flash, all the current macro definition settings will be cleared.



Example:

- Hold down the “T” button for 3 seconds until the “LED2-LED3” light flashes slowly.
- Press the “ML” button, the “LED2” light will flash slowly, the controller is ready to record. Press the “B” button, after 1 second press “A”, after 3 seconds press “X”, then press “T” to finish setting and save.
- The button “ML” now is set to perform “B (after 1s)→ A (after 3s) →X”.

You Can Test and Check the “MLIMR” Settings on a Console:

Settings > Controllers and Sensors > Test Input Devices > Test Controller Bunions.

Wired Connection on Windows PC

PC XINPUT:

- Connect the controller to a Windows system computer with the USB cable, it will automatically be recognized as “X-INPUT” mode.
- The first and the fourth LEDS wil have a steady ligh.

Please Note: In the X-INPUT mode, button “A” becomes ‘B”, becomes “A”, X” becomes “Y”, and *Y” becomes °X”.

STEAM:

- Press down the right joysiick and connect the controller o the ‘computer with the USB cable.
- It il be recognized as the STEAM *Pro Controller” mode and ‘can be used for supported games.

Functions Comparison

Platform	Screenshot	AudioFunction	Motion	Vibration	Macro	Turbo
Switch Wireless	✓	x	✓	✓	✓	✓
Switch Wired	✓	✓	✓	✓	✓	✓
PC X-Input	x	x	x	✓	✓	✓
PC STEAM	x	x	x	✓	✓	✓

Adjust the Ears Light Modes

Three Light Effect Modes of Ears :

breathing mode — light on — light off

Adjust the Light Modes:

After the controller connects with the console, press both the “L” and “R” buttons for 5 seconds to switch the lighting effect mod.

Charging Instructions

- The controller can be charged using the Switch charger, the Switch Dock, 5V 2A power adapter, or USB power supplies with the USB Type C to A cable.
- If the controller is connected with the console while charging, the corresponding channel LED light(s) on the controller will flash. The channel LED light(s) will stay lit if the controller has been fully charged.
- If the controller is not connected with the console while charging, the 4 LED lights will flash. The LED lights will go off when the controller has been fully charged.
- When the battery is low, the corresponding channel LED light(s) will flash; the controller will turn off and need to be charged if the battery is exhausted.

Calibrate the Control Sticks

- Press the HOME button > System Settings > Controllers and Sensors > Calibrate Control Sticks > Press the stick you want to calibrate
- Follow the on-screen instructions to verify the controller functionality

Warranty

The product comes with a 1-year limited warranty. Our goal is to achieve total customer satisfaction, we will do our best to understand our customer's requirements and always meet the requirements. If you have any questions, please do not hesitate to contact us via cs@mytrixtech.com. We will be more than happy to assist you.

Company Information

Company: Mytrix Technology LLC

Address: 13 Garabedian Dr. Unit C, Salem NH 03079

Mytrix

Wireless Controller for NS
MTNSPC-C01

USER MANUAL

Left Stick Right Stick Home Button Start Button Capture Button Charge Port

Input Voltage: DC 200mA Input Connector: Type-C Charging Cable
Working Voltage: 1.2V Input Connector: Type-C Charging Cable
Battery Capacity: 800mAh To User Manual
Product Size: 130*72*12mm Weight: 150g±5g
Material: ABS

Specification Package Includes

Wireless Connection & Wake Up Function

Please Note Press make sure the AIRPONE mode of the console is turned off before starting using.

First Time Pairing:

- From the HOME menu of the console, select Controllers, then Change Grip/Order.
- Press and hold the "START" button on the top of the controller for at least five seconds to power on the controller until all LEDs light. Once paired, all 4 LEDs will remain lit, and the controller will be shown on the screen.

Wake Up and Reconnect

Once the controller has paired with the console:

- If the console is in the SLEEP mode, the "HOME" button of the controller is able to wake up both the controller and the console.
- If the console is on, all the buttons are able to wake up the controller. The console will reconnect to the controller.

If need to connect please follow the three steps:

- Turn off the AIRPLANE mode on the console.
- Select the controller's information on the left console (System Setting -> Controllers and Sensors -> Disconnect Controller).
- Follow the First-Time Pairing again.

Controller Auto Sleep

- In the wireless connection, press and hold the HOME button for 3 seconds, the controller will be disconnected and turn into sleep mode.
- If no button is pressed after 5 minutes, the controller will automatically sleep.
- The controller sleeps when the controller is in SLEEP mode.

Wired Connection

1 Turn on the "Via Controller Wired Communication" in the console System Settings -> Controllers and Sensors -> Via Controller Wired Communication - On.

Please Note: The "Via Controller Wired Communication" must be turned on BEFORE connecting the controller and the Dock with the cable.

2 Set the Switch console on the Dock for the TV mode. Connect the Switch Dock and the controller directly with the USB Type C-to-A cable.

3 Press HOME button -> Controllers -> Change Grip/Order.
The controller icon with the "USB" displayed on the screen indicates the wired connection is successful.

Audio Function

The controller has a 3.5mm audio port, supports 3.5mm wired headset or microphones.

Please Note: The audio function set ONLY work in the Official Console Mode with a Switch console.

Add first NOT work either the wireless connection or when the controller is wired to a PC.

Please Note: The "Via Controller Wired Communication" must be turned on BEFORE connecting the controller and the Dock with the cable.

On Screen settings -> Controllers and Sensors -> Via Controller

Wireless Communication > On
③ Set the Switch connects on the Dock for the TV mode.

- ③ Connect the Switch Dock and the controller with the USB cable.
④ The icon with "USB" displayed indicates the wired connection is successful.
⑤ Plug the 3.5mm audio jack into the audio port on the bottom of the controller.

Turbo and Auto-fire

Buttons Available to Set the Turbo Function:
ABXY/L2/L3/R2/R3



Set Up the Turbo Function:

- Manual Turbo Function:** Press and hold the Turbo button, then press any function button ONCE to turn on the "Manual Turbo Function".
- Auto Turbo Function:** Repeat the first step above to switch to the "Auto Turbo Function".
- Turn Off the Turbo Function:** Repeat the first step after the "Auto Turbo Function" has been set.

Turn off all the turbo functions for all buttons:

Press and hold the Turbo button for 3 seconds, then press the "middle" button to turn off the turbo function of all buttons.

There Are Three Levels For the Turbo Speed:

- Slower: 3 switches, the corresponding LED indicators will flash at a slow speed.
- Medium: 12 switches, the corresponding LED indicators will flash at a medium speed (Default Level).
- Faster: 20 switches, the corresponding LED indicators will flash at a fast speed.

Adjust the Turbo Speed Levels:

Press and hold the Turbo button, push down the right joystick to decrease one grade of turbo speed, or up the right joystick to increase one grade of turbo speed.



You Can Test and Check the Turbo Settings on a Console:
Settings > Controllers and Sensors > Test Input Devices > Test Controller Buttons

Adjust Vibration Intensity

There Are Four Levels of Vibration Intensity:
None, weak, medium, strong.



Adjust the Vibration Intensity:

- Press and hold the Turbo button, press the "+" button to decrease one grade of the vibration intensity.
- Press the "-" button to increase one grade of vibration intensity.

Macro Definition Function

There are two macro-enabled buttons "M1/M2" on the back of the controller, and a macro definition switch button "T". Buttons "M1/M2" can be programmed into function button or buttons sequence respectively.

M1/M2 Buttons Can Be Programmed to:

ABXY/L2/L3/R2/R3/Custom Settings Actions

Enter the Macro Definition Mode and Set Up the Buttons(s):

- Press the "T" button on the back of the controller for 3 seconds, the light "LED2" will flash slowly.
- Press the "M1" or "M2" button, the "LED2" light will flash slowly. Reconfirm it is ready to record the macro setting.
- Press the function buttons that need to be set in turn, the controller will record the button and the time interval of each button pressed.

- Press the "T" button to save, the "LED2" light will keep lit. The macro definition function will be successful. When the controller recommends to the console, it will automatically apply the last macro definition setting.

Clear the Macro Definition Settings:

Press and hold the "T" button for 5 seconds until the "LED2" light flashes, all the current macro definition settings will be cleared.



Example:

- Hold down the "T" button for 3 seconds until the "LED2" light flashes slowly.
- Press the "M1" button, the "LED2" light will flash slowly, the controller is ready to record.
- Press the "B" button, after 1 second press "X" after 3 seconds press "Y", then press "T" to finish setting and save.
- The button "M1" can be set to perform "B after 1s -> A after 3s -> Y".

You Can Test and Check the "M1/M2" Settings on a Console:

Settings > Controllers and Sensors > Test Input Devices > Test Controller Buttons

Wired Connection on Windows PC

PC X INPUT:

- Connect the controller to a Windows system computer with the USB cable, it will automatically be recognized as "XINPUT" mode.
- The left and the fourth LEDs will show a steady light.

Please Note: In the XINPUT mode, button "X" becomes "Y", "B" becomes "X", "Y" becomes "Y", and "Y" becomes "X".

STEAM:

- Press down the right joystick and connect the controller to the computer with the USB cable.
- It will be recognized as the STEAM "Pro Controller" mode and can be used for supported games.

Functions Comparison

Function	Light	Audio	Touch	Back	Share	Touch
Light Effect	-	-	-	-	-	-
Audio Effect	-	-	-	-	-	-
Touch Effect	-	-	-	-	-	-
Back Effect	-	-	-	-	-	-
Share Effect	-	-	-	-	-	-

Adjust the Ears Light Modes

Three Light Effect Modes of Ears:

Breathing mode - light on - light off

Adjust the Light Modes:

After the controller connects with the console, press both the "L" and "R" buttons for 5 seconds to switch the lighting effect mode.

Charging Instructions

- The controller can be charged using the Switch charger, the Switch Dock, or a power adapter, or USB power supply with the USB Type C to A cable.
- If the controller is connected with the console while charging, the corresponding channel LED light(s) on the controller will flash. The channel LED light(s) will stay lit if the controller has been fully charged.
- If the controller is not connected with the console while charging, the 4 LED lights will flash. The LED lights will go off when the controller has been fully charged.

- When the battery is low, the corresponding channel LED light(s) will flash, the controller will turn off and need to be charged if the battery is exhausted.

Calibrate the Control Sticks

- Press the HOME button > System Settings > Controllers and Sensors > Calibrate Control Sticks > Press the stick you want to calibrate.
- Follow the on-screen instructions to verify the controller functionality.



Calibrate Motion Controls

Press the HOME button > System Settings > Controllers and Sensors > Calibrate Motion Controls > Calibrate the Controller's Roll the controller on a horizontal plane and hold "Y" or "X" on the controller you want to calibrate.

Please Note:

- When using the wireless controller for the first time, it is recommended to have both the Control Sticks and Motion Controls calibrated before usage.
- If the calibration fails, please press the "Y" button to return the settings and press the "Y" button to repeat the calibration step. Power off the controller when the calibration is finished, then restart the controller and console.

Warranty

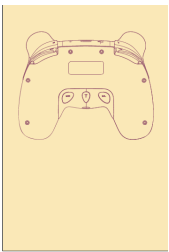
The product comes with a 1-year limited warranty. Our goal is to achieve total customer satisfaction, we will do our best to understand our customer's requirements and always meet the requirements. If you have any questions, please do not hesitate to contact us via support@mytribe.com. We will be more than happy to assist you.

Company Information

Company: MyTribe Technology LLC
Customer Service Tel: +1 578-498-0821
Customer Service Email: support@mytribe.com
Web: www.mytribetech.com
Address: 15 September St, Unit C, Essex MA 02079



Mytribe MTNSPC C02 Perry Yellow Bear Wireless Controller [pdf] User Manual MTNSPC C02 Perry Yellow Bear Wireless Controller, MTNSPC C02, Perry Yellow Bear Wireless Controller, Bear Wireless Controller, Wireless Controller, Controller



Manuals+.