



MYSWEETY 3020 PLUS CNC Router Machine User Manual

[Home](#) » [MYSWEETY](#) » MYSWEETY 3020 PLUS CNC Router Machine User Manual 

Contents

- [1 MYSWEETY 3020 PLUS CNC Router Machine](#)
- [2 Product Usage Instructions](#)
- [3 FAQ](#)
- [4 Documents / Resources](#)
 - [4.1 References](#)
- [5 Related Posts](#)

MYSWEETY

MYSWEETY 3020 PLUS CNC Router Machine



Specifications:

- Model: 3020PLUS
- CNC Router Type: Desktop
- Working Area: X: 300mm, Y: 200mm, Z: 50mm
- Spindle Motor: 200W DC motor
- Controller: GRBL control board
- Software Compatibility: Grblcontrol, LaserGrbl

Product Usage Instructions

Connecting the Machine to Software:

To connect the machine to the software, follow these steps:

1. Check if the driver program is installed successfully. If not, delete the old driver program and download the latest driver program from this link.
2. Ensure that the USB port is successfully connected.
3. If the COM port number cannot be found, try connecting to other USB ports on the computer.

Troubleshooting Port Connection Issues:

If the software shows “port opened” in the status line but the machine is not responding, follow these steps:

1. Check if the emergency stop switch is working. If it is, rotate and loosen the emergency stop switch. Then, click

the Unlock icon in the toolbar to unlock it.

2. Verify the limit switches. If any axis touches the limit switch, the machine will be locked. In this case, click the Reset icon in the toolbar first, and then click the Unlock icon to unlock the machine.

Troubleshooting Machine Movement Issues:

If the machine is connected to the software but cannot move, follow these steps:

1. Ensure that the power switch on the control board is turned on. Click the unlock icon before starting any operation.
2. Check the emergency stop switch and limit switch according to the steps mentioned in Q2.

Engraving Circles instead of Ovals:

If you are unable to engrave circles and only get ovals, follow these steps:

1. Check the synchronous belt tension of the Y1, Y2, X, and Z axes. Make sure it is pulled taut.
2. If the synchronous belt is loose, tighten it first.
3. Tighten the synchronous belt's M3 screw with the Allen wrench.

FAQ:

- Q1: Why can't the COM port number be found when the machine is connected to the software?
A1: Please check if the driver program is installed successfully. You can delete the old driver program and then download and install the latest driver program from this link. Additionally, check the USB port connection and try connecting to other USB ports on the computer.
- Q2: When the software is connected, the status line shows port opened, what should we do?
A2: Check if the emergency stop switch is working. If it is, rotate and loosen the emergency stop switch. Then, click the Unlock icon in the toolbar to unlock it. Also, verify the limit switches.
If any axis touches the limit switch, click the Reset icon in the toolbar first, and then click the Unlock icon to unlock.
- Q3: Why did you successfully connect the machine with the software, but the machine still cannot move?
A3: Check if the power switch on the control board is turned on. Make sure to click the unlock icon before starting any operation. Additionally, check the emergency stop switch and limit switch according to the steps mentioned in Q2.
- Q4: If you cannot engrave circles, only ovals, what should we do?
A4: You need to check the synchronous belt tension of the Y1, Y2, X, and Z axes. Ensure that it is pulled taut. If the synchronous belt is loose, tighten it first. Then, tighten the synchronous belt's M3 screw with the Allen wrench.

FAQ

Q1: Why can't the COM port number be found when the machine is connected to the software?

1. Please check if the driver program is installed successfully? You can delete the old driver program, and then

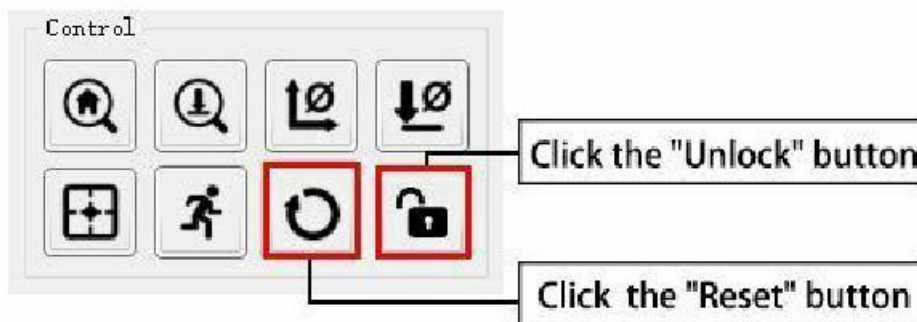
download and install the latest driver program from the following link:

<http://www.wch-ic.com/search?t=all&q=CH340>.

2. Check the USB port to make sure it is successfully connected.
3. Connect to other USB ports on the computer.

Q2: When the software is connected, the status line shows “port opened”, what should we do?

1. Check whether the emergency stop switch is working, if it is, you need to rotate and loosen the emergency stop switch, and then click the “Unlock” icon in the toolbar to unlock it.
2. Check limit switches. The machine is also locked if any axis touches the limit switch. In this case, you need to click the “Reset” icon in the toolbar first, and then click the “Unlock” icon to unlock.



Q3: Why did you successfully connect the machine with the software, but the machine still cannot move?

1. Check whether the power switch on the control board is turned on, please make sure the machine is running under power on.
2. Every time you turn on the machine, please click the “unlock” icon first, and then start working.
3. Check the emergency stop switch and limit switch according to the steps of Q2.

Q4: If you can not engrave circles, only ovals, what should we do?

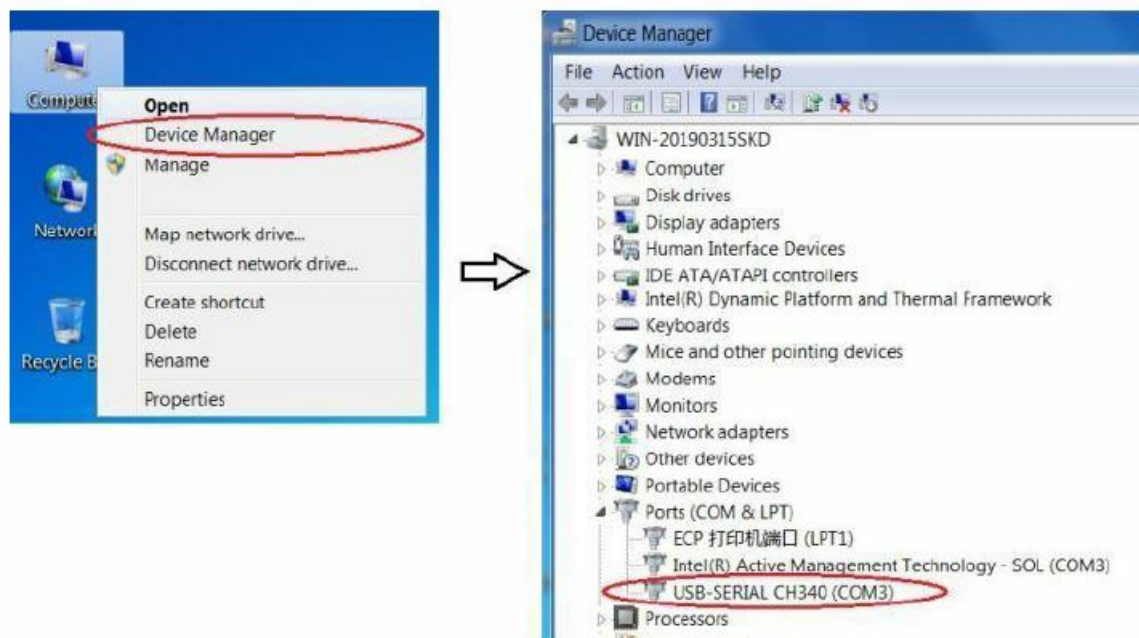
You need to check the synchronous belt of the Y1, Y2, X, and Z axis to make sure it is pulled taut. If the synchronous belt is loose, you need to tighten the synchronous belt first, and then tighten the synchronous belt's M3 screw with the Allen wrench.

Q5: When should we update the control board firmware for the 3020PLUS?

1. In the case of Q2, but you can not solve it according to the Q2 step, you need to update the firmware of the control board.
2. In the case of Q3, but you can not solve it according to the Q3 step, you need to update the firmware of the control board.

Q6: How do you update the firmware of the 3020PLUS control board?

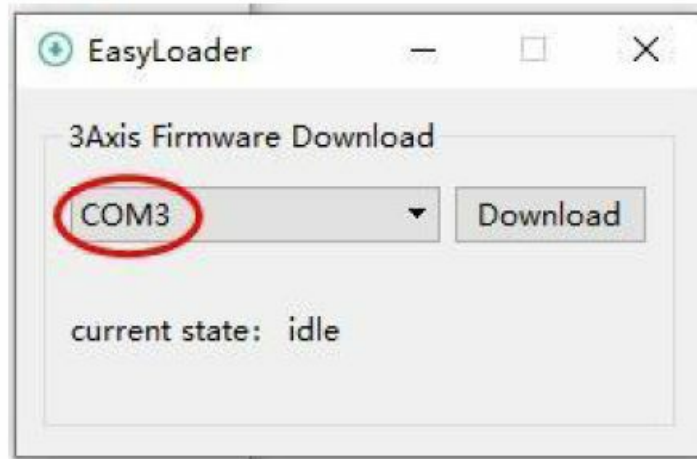
1. Connect the computer and the control board, and make sure the connection is successful, you can find the COM port number of CH340 in the device manager.



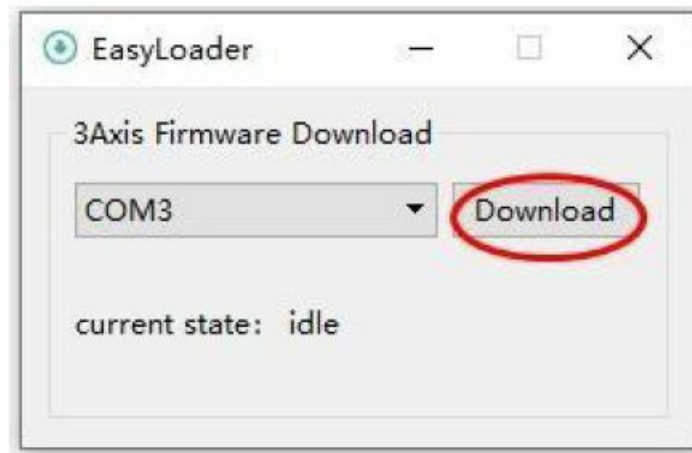
2. Grblcontrol and LaserGrbl software must be closed before the firmware update.
3. Double click to open the application: EasyLoader U disk→EasyloaderV1.0→EasyLoader.exe

iconengines	04/12/2020 09:59	文件夹	
imageformats	04/12/2020 09:59	文件夹	
platforms	04/12/2020 09:59	文件夹	
translations	04/12/2020 09:59	文件夹	
account.txt	03/04/2020 10:54	文本文档	1 KB
avrdude.conf	05/06/2020 10:14	CONF 文件	496 KB
avrdude.exe	05/05/2020 15:42	应用程序	550 KB
D3Dcompiler_47.dll	11/03/2014 18:54	应用程序扩展	3,386 KB
EasyLoader.exe	03/12/2020 10:45	应用程序	45 KB
EEPROM_Clear.hex	03/12/2020 09:43	HEX 文件	3 KB
GRBL1.1F_v3.4.hex	27/07/2019 16:28	HEX 文件	83 KB
libEGL.dll	07/06/2018 11:31	应用程序扩展	22 KB
libgcc_s_dw2-1.dll	29/12/2015 06:25	应用程序扩展	118 KB
libgcc_s_sjlj-1.dll	29/02/2020 16:17	应用程序扩展	1,107 KB
libGLSLV2.dll	07/06/2018 11:30	应用程序扩展	2,742 KB
libstdc++-6.dll	29/12/2015 06:25	应用程序扩展	1,505 KB
libusb0.dll	07/03/2016 17:39	应用程序扩展	43 KB
libwinpthread-1.dll	29/12/2015 06:25	应用程序扩展	78 KB
opengl32ew.dll	14/06/2016 21:08	应用程序扩展	15,621 KB
Qt5Core.dll	23/04/2020 16:31	应用程序扩展	5,963 KB
Qt5Gui.dll	07/06/2018 11:35	应用程序扩展	6,066 KB
Qt5SerialPort.dll	07/06/2018 11:49	应用程序扩展	76 KB
Qt5Svg.dll	07/06/2018 11:48	应用程序扩展	351 KB
Qt5Widgets.dll	07/06/2018 11:39	应用程序扩展	6,213 KB

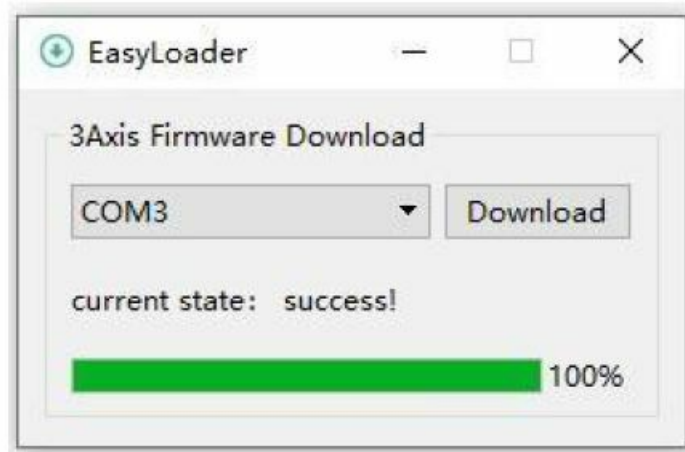
4. Select the COM port number corresponding to CH340.




5. Click "Download" for firmware updates



6. The firmware update is successful.



	<p>MYSWEETY 3020 PLUS CNC Router Machine [pdf] User Manual</p> <p>3020 PLUS CNC Router Machine, 3020, PLUS CNC Router Machine, CNC Router Machine, Router Machine, Machine</p>
---	---

References

- [search - NanjingQinhengMicroelectronics](#)
- [User Manual](#)