



myStrom 231116-MS WiFi Button Max Tool User Guide

[Home](#) » [myStrom](#) » myStrom 231116-MS WiFi Button Max Tool User Guide 

Contents

- [1 myStrom 231116-MS WiFi Button Max Tool](#)
- [2 Product Information](#)
- [3 Specifications](#)
- [4 Product Usage Instructions](#)
- [5 Frequently Asked Questions \(FAQ\)](#)
- [6 Using Instructions](#)
- [7 Commands for myStrom devices](#)
- [8 Documents / Resources](#)
 - [8.1 References](#)



myStrom 231116-MS WiFi Button Max Tool



Product Information

Product Name: myStrom Button Max Tool (beta)

Manufacturer: Swiss Innovation

Product Description: The myStrom Button Max Tool is a Swiss Innovation that allows you to connect and configure your myStrom Button Max with your PC/Mac. It provides an interface to add screens, define interactions, and customize icons for your button.

Specifications

- Requires myStrom Button Max
- Compatible with PC/Mac

Product Usage Instructions

Step 1: Download and Install myStrom Button Max Tool

To get started, download the myStrom Button Max Tool from the official website:
<https://mystrom.ch/de/support/mystrom-button-max-tool/>

Step 2: Connect myStrom Button Max Tool

- Make sure your myStrom Button Max and your PC/Mac are connected to the same network.
- Launch the myStrom Button Max Tool and follow the on-screen instructions to connect the tool with your button.

Step 3: Add Screens and Configure Interactions

- To add your first screen, right-click on the interface and select “Add Screen” from the options.
- You can rename the screen, define an icon, and specify the interaction it performs.

Rename Your Screen

- To rename your screen, right-click on the screen and select “Rename”.
- Enter the desired name for your screen.

Define an Icon

To define an icon for your screen, right-click on the screen and select “Define Icon”. Custom icons should be 1-bit, black & white .bmp files. The file size and naming conventions for different icon sizes are as follows:

- **Small:** 44 x 44 px, file name ends in -small
- **Medium:** 132 x 132 px, file name ends in -medium
- **Large:** 200 x 200 px, file name ends in -large

You can use the “Show directory” option to navigate to the folder where you store your custom icons.

Define an Interaction

- To define an interaction for your screen, right-click on the screen and select “Define Interaction”.
- You can choose from options like going to another screen or defining an HTTP request.

Step 4: Define Button Actions

- To define button actions, select the screen where you want to add the action and choose “HTTP” as the interaction type.

Choose an HTTP Method

- Select the appropriate HTTP method for your command.
- You can choose from options like GET or POST.

Test and Execute Commands

- Click on the green arrow button to test and execute your command.
- You can also activate or deactivate the function as needed.

Enter Your Command

- Enter the specific command for your myStrom device. For example, to toggle a myStrom WiFi Switch, use the following command:
- `Toggle http://192.168.254.1/toggle`
- You can find a complete list of commands for myStrom devices on api.mystrom.ch.

Step 5: Sync Your Configuration

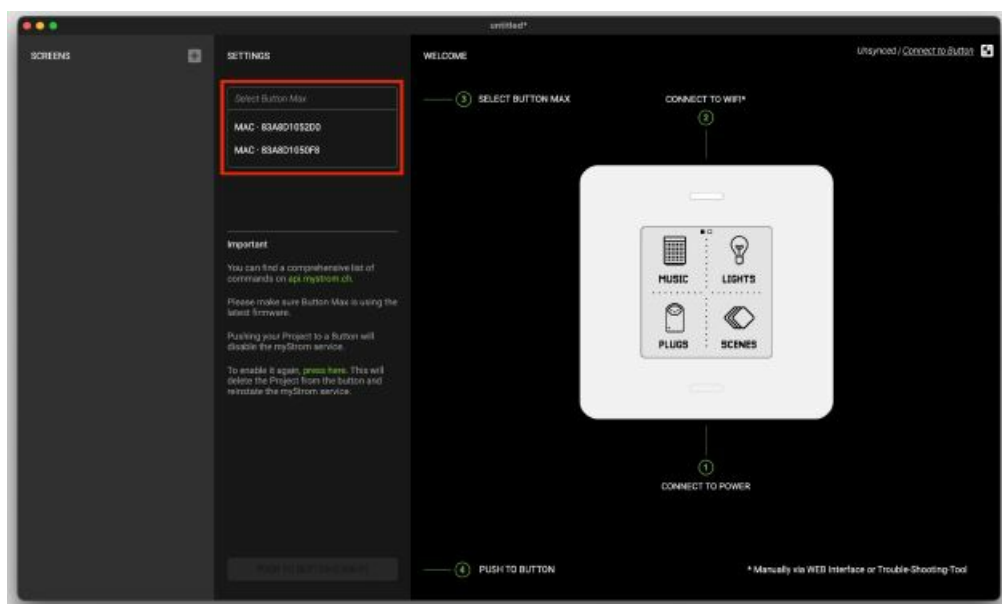
To sync your configuration with your myStrom Button Max, press CTRL-P / CMD-P at any time. Alternatively, you can click on the sync button provided.

Frequently Asked Questions (FAQ)

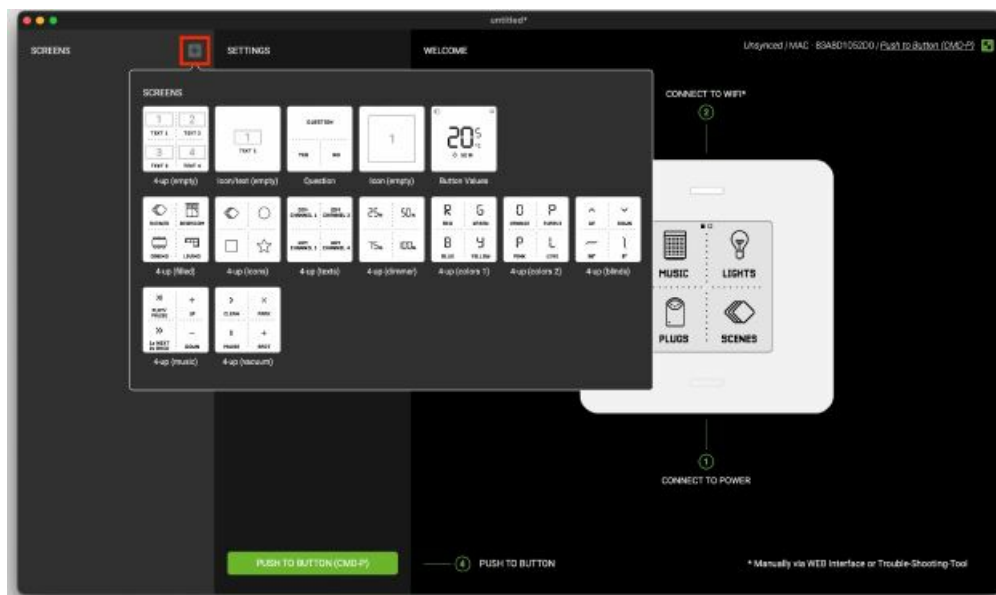
- **Q:** What is the myStrom Button Max Tool?
- **A:** The myStrom Button Max Tool is a Swiss Innovation that allows you to connect and configure your myStrom Button Max with your PC/Mac.
- **Q:** Where can I download the myStrom Button Max Tool?
- **A:** You can download the myStrom Button Max Tool from the official website:
<https://mystrom.ch/de/support/mystrom-button-max-tool/>
- **Q:** How do I add screens and configure interactions?
- **A:** Right-click on the interface and select “Add Screen” to add screens. To configure interactions, right-click on the screen and select the desired options from the menu.
- **Q:** Can I use custom icons for my screens?
- **A:** Yes, you can use custom icons for your screens. Custom icons should be 1-bit, black & white .bmp files with specific dimensions. Refer to the user manual for more details.
- **Q:** How do I define button actions?
- **A:** Select the screen where you want to add the action and choose “HTTP” as the interaction type. Then, choose the HTTP method, enter the command, and test/execute it using the provided options.
- **Q:** How do I sync my configuration with my myStrom Button Max?
- **A:** Press CTRL-P / CMD-P at any time to sync your configuration. Alternatively, you can click on the sync button provided in the tool.

Using Instructions

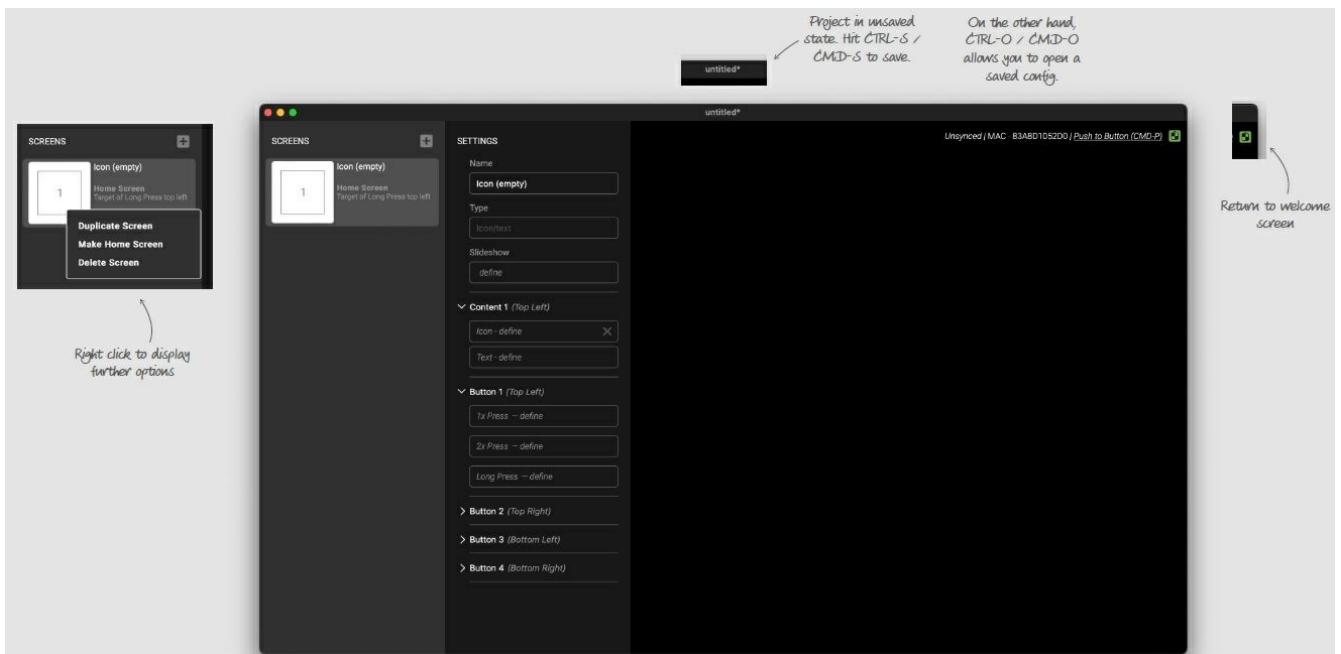
- Connect myStrom Button Max Tool with a Button Max. They have to be on the same network as your PC/Mac.



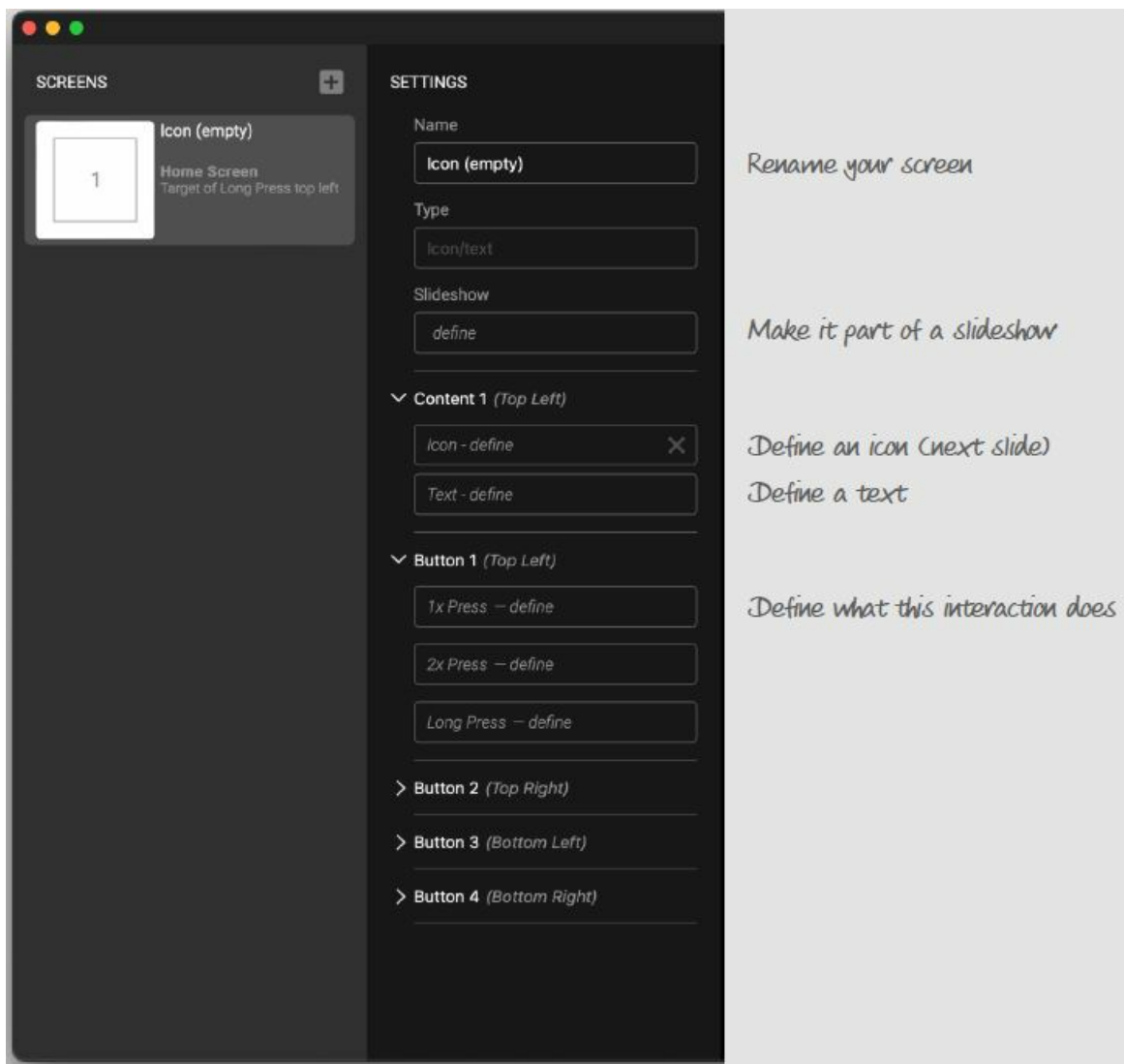
- Add your first screen.



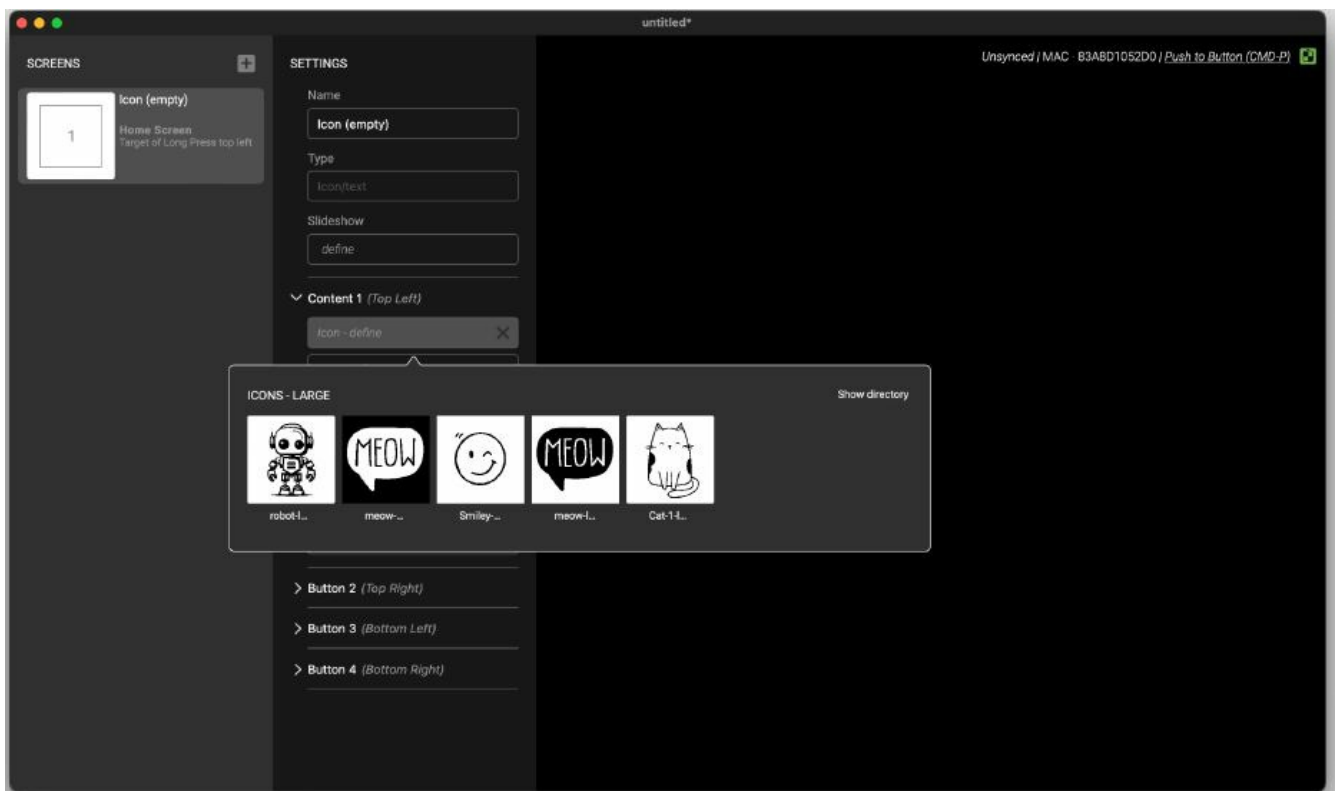
- This displays the screen's settings. Every screen has Content (graphics – icons and text) and Buttons (interactions).



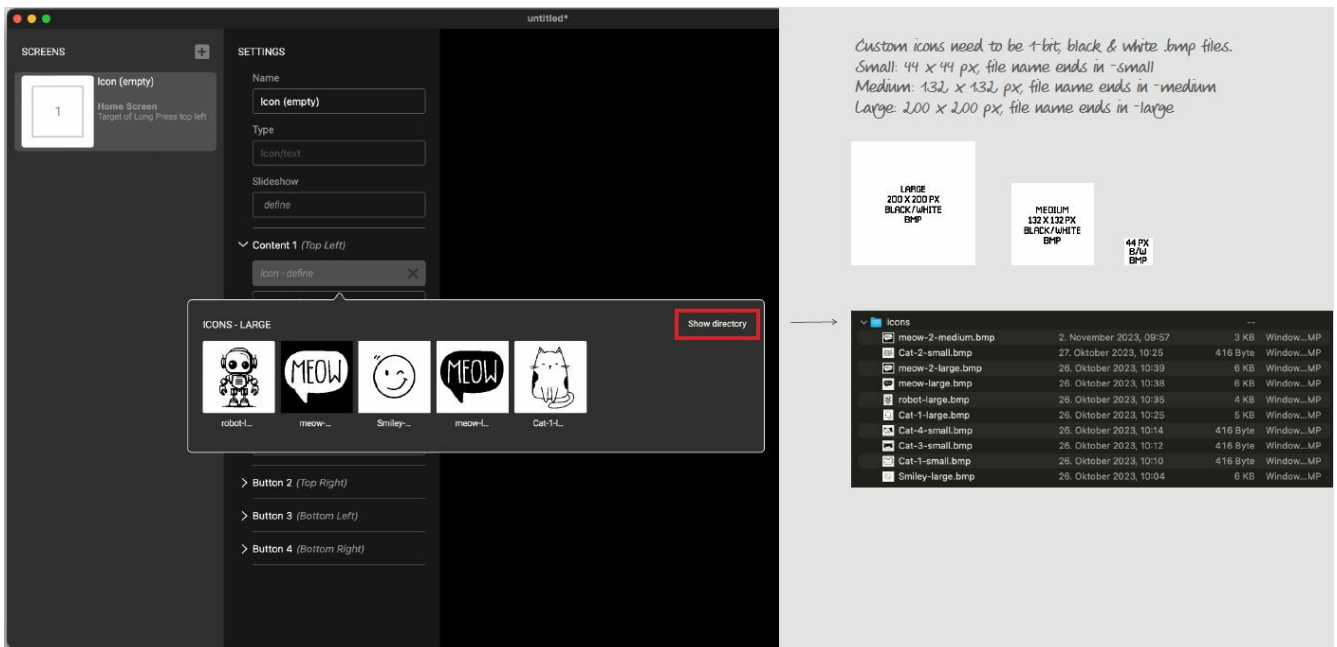
- This displays the screen's settings. Every screen has Content (graphics – icons and text) and Buttons (interactions).



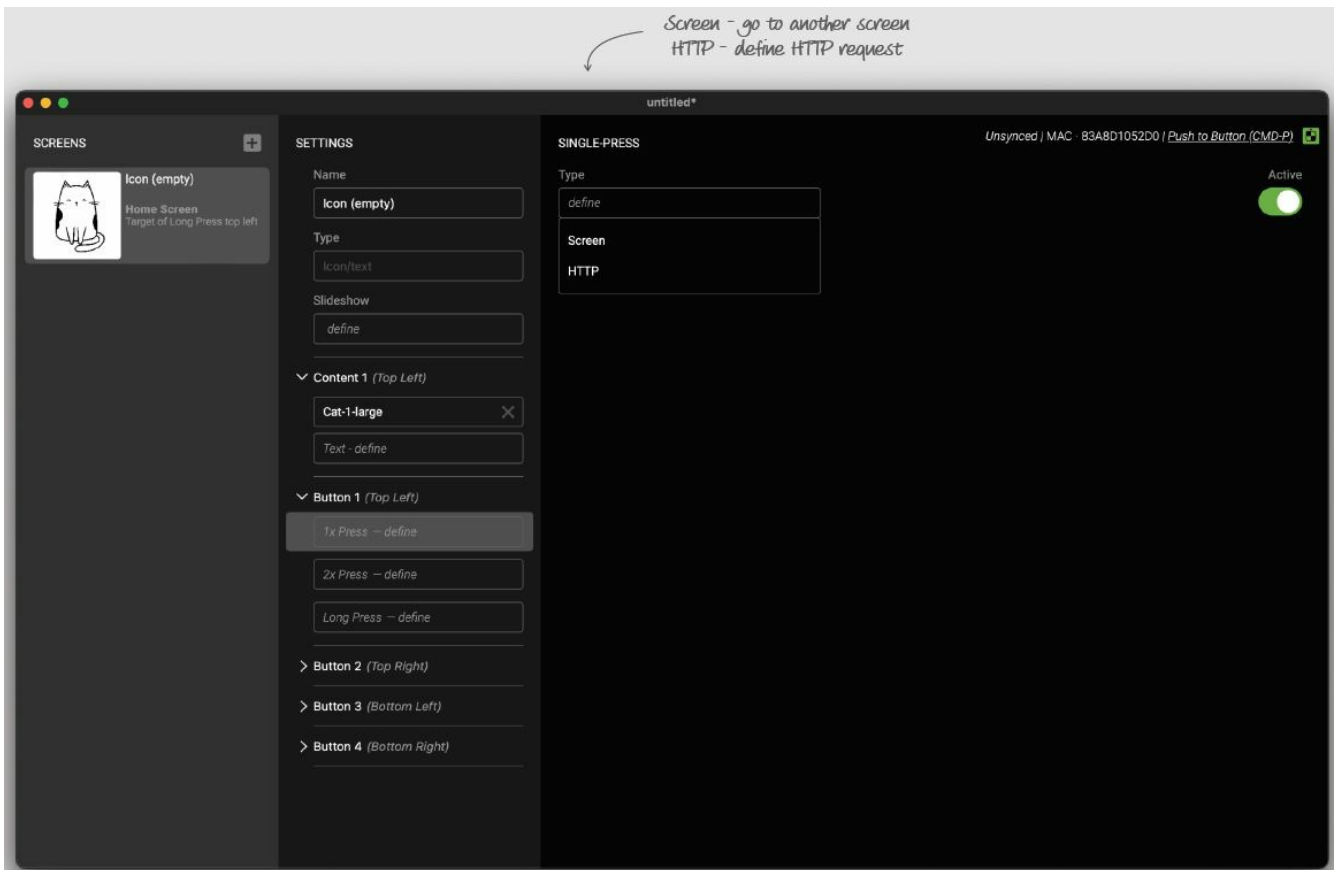
- Add an icon.



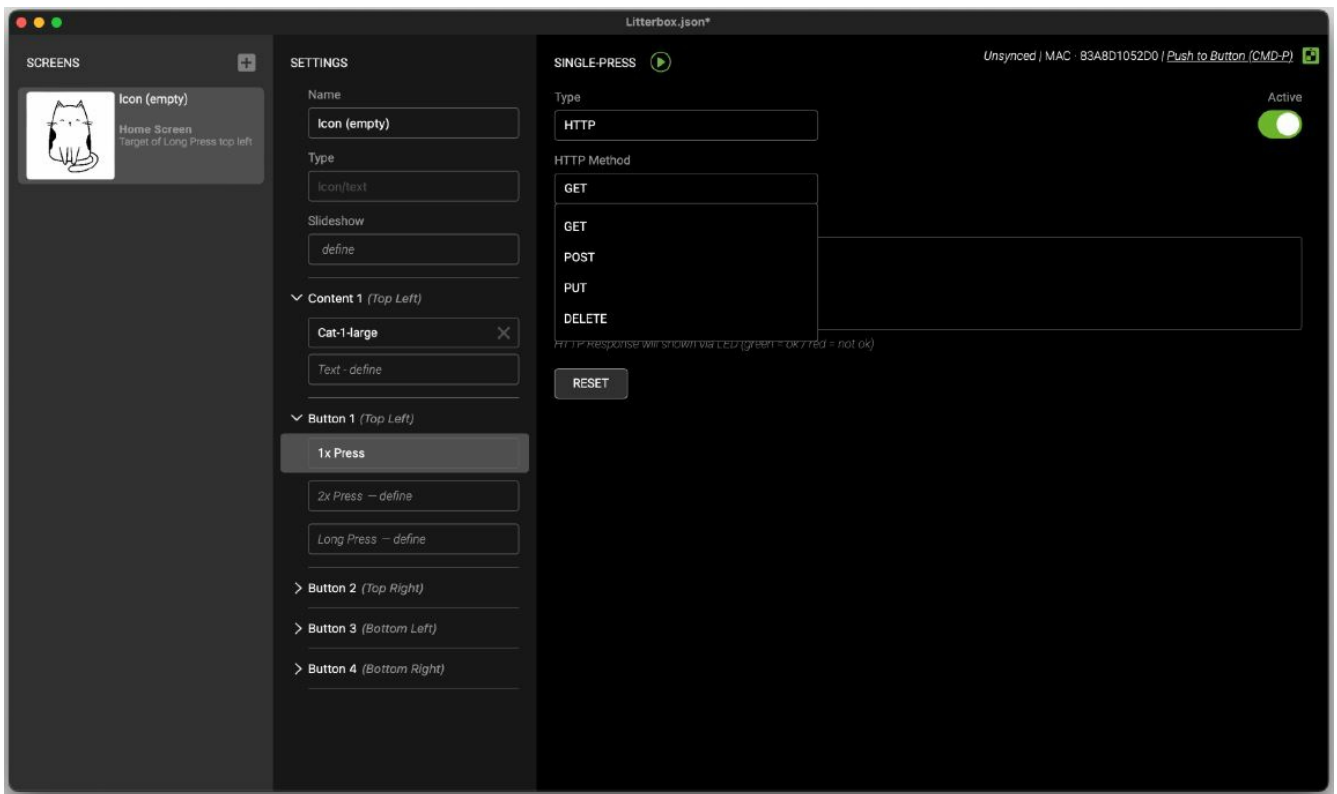
- The show directory displays the custom icon folder where you store your custom icons.



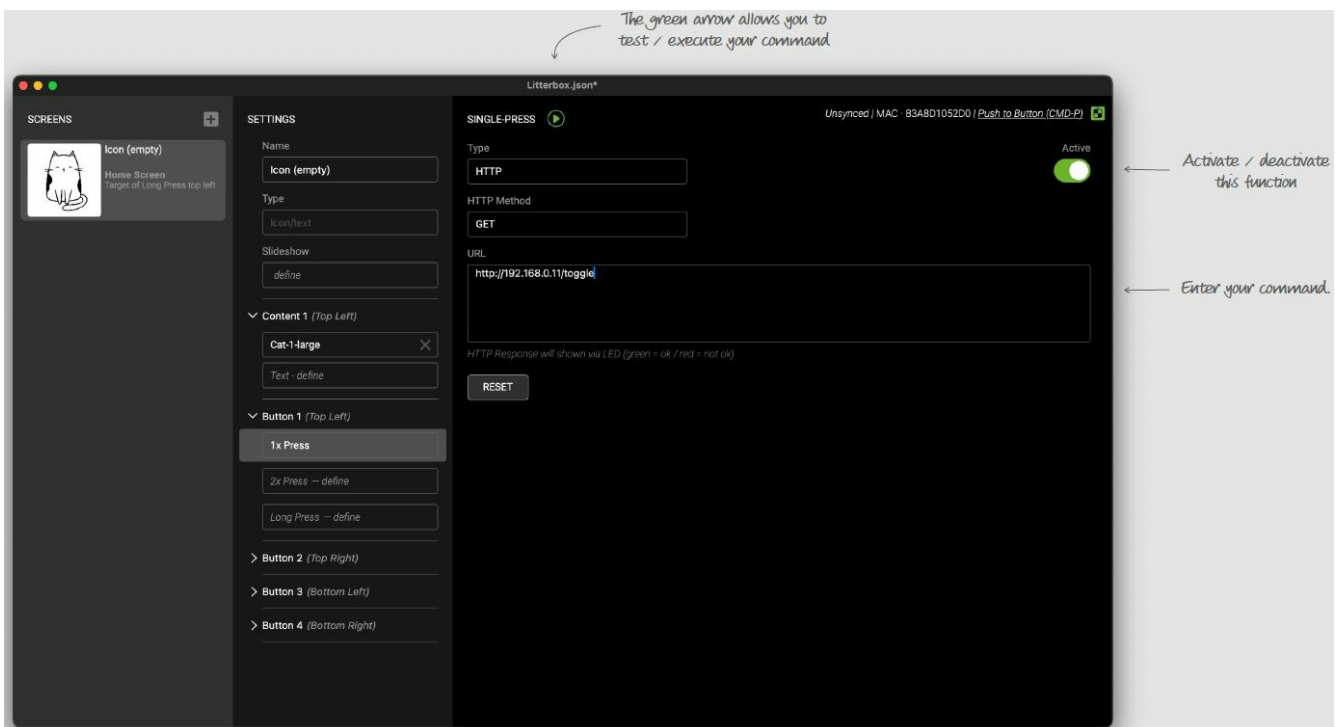
- Now let's define a Button action. Choose HTTP.



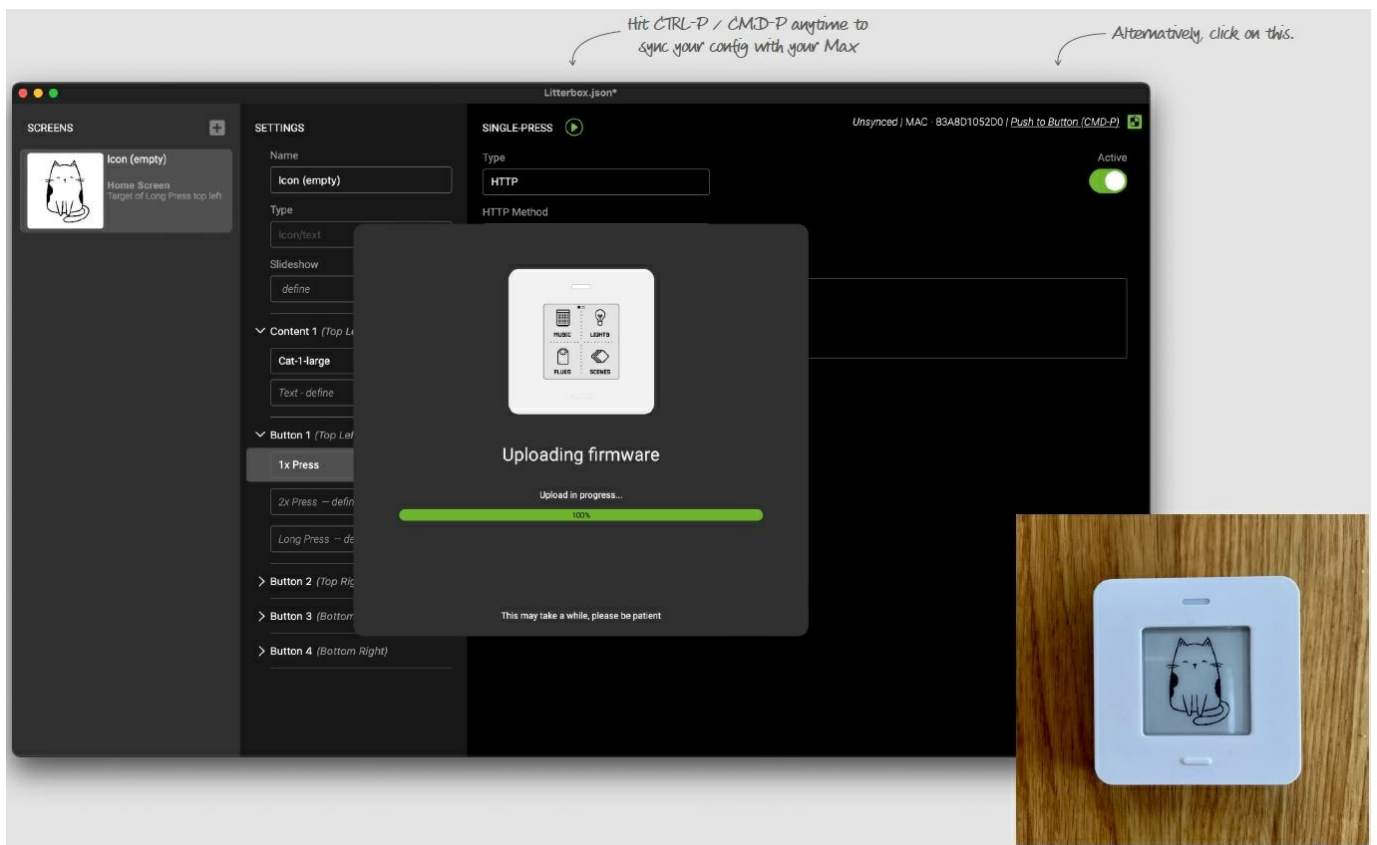
- Choose an HTTP method.



- This will make Button 1 toggle a myStrom WiFi Switch. List of commands at the end.



- Sync. Et voilà, your custom Button Max.



Commands for myStrom devices

Switches

- Use the HTTP GET method. Replace the IP with the IP of your device.

Toggle

- `http://192.168.254.1/toggle.`

Switch OFF

- `http://192.168.254.1/relay?state=0.`

Switch ON

- `http://192.168.254.1/relay?state=1`
- You can find a complete list of commands on api.mystrom.ch.

Bulbs & Strips

- Use the HTTP POST method. Replace the IP with the IP of your device. Replace the MAC with the MAC of your device.

URL

- <http://192.168.254.1/api/v1/device/ag45h5h3>

PAYLOAD

- color=00FF0000&action=on&ramp=100
- colour: WRGB value action: on, off, toggle ramp: transition time from one colour to another




Get myStrom Button Max Tool here

- <https://mystrom.ch/de/support/mystrom-button-max-tool/>. mystrom.ch.

Documents / Resources

	myStrom 231116-MS WiFi Button Max Tool [pdf] User Guide 231116-MS, 231116-MS WiFi Button Max Tool, WiFi Button Max Tool, Button Max Tool, Max Tool, Tool
---	---

References

-  [myStrom](#)
-  [myStrom.ch | Innovations For Your Home. Designed in Switzerland.](#)
-  [Support | myStrom Button Max Tool \(beta\)](#)
- [User Manual](#)