



mysoda Toby Sparkling Water Maker Instruction Manual

[Home](#) » [mysoda](#) » **mysoda Toby Sparkling Water Maker Instruction Manual** 

Contents

- [1 mysoda Toby Sparkling Water Maker](#)
- [2 How a tree transforms into a sparkling water maker](#)
- [3 IMPORTANT SAFEGUARDS](#)
- [4 WARNINGS FOR THE DEVICE AND THE USE OF IT](#)
- [5 PARTS AND FEATURES](#)
- [6 INSTALLING THE CO2 CYLINDER](#)
- [7 HOW TO MAKE SPARKLING WATER](#)
- [8 CARE AND CLEANING OF YOUR DEVICE](#)
- [9 TECHNICAL SPECIFICATIONS](#)
- [10 WARRANTY](#)
- [11 TROUBLESHOOTING](#)
- [12 Documents / Resources](#)
 - [12.1 References](#)
- [13 Related Posts](#)

mysoda[®]

mysoda Toby Sparkling Water Maker



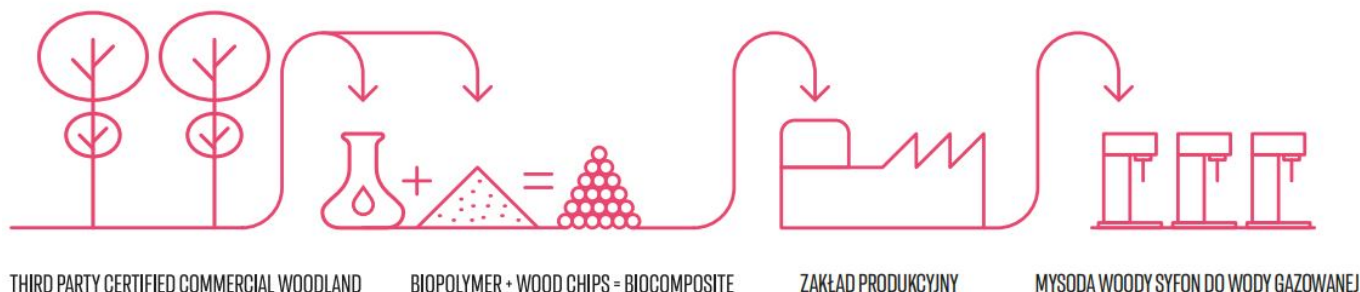
How a tree transforms into a sparkling water maker

Raw material from sustainably managed forests

Wood based, renewable biocomposite produced from residues of cellulose and sawmill industries.

By combining these two completely renewable ingredients we create an ideal replacement for fossil-based plastic

This material is used in the production of Toby sparkling water makers



IMPORTANT SAFEGUARDS

Read the instructions in this manual carefully before using the sparkling water maker. Always follow the instructions and safety precautions. Using the device against the instructions and precautions may result in damage to the device and personal injury. Keep this manual for yourself and other users of the device. The following warnings apply to the use of the sparkling water maker, the water bottles and the carbon dioxide (CO₂) cylinders used within it.

WARNINGS FOR THE DEVICE AND THE USE OF IT

1. This product is not designed or intended for use by children under 12 years of age. Adult supervision is necessary when the device is used by children.
2. This appliance is not intended for use by persons (including children) with reduced physical, sensory, or mental capabilities, or lack of experience and knowledge, unless they are closely supervised and instructed concerning use of the appliance by a person responsible for their safety.

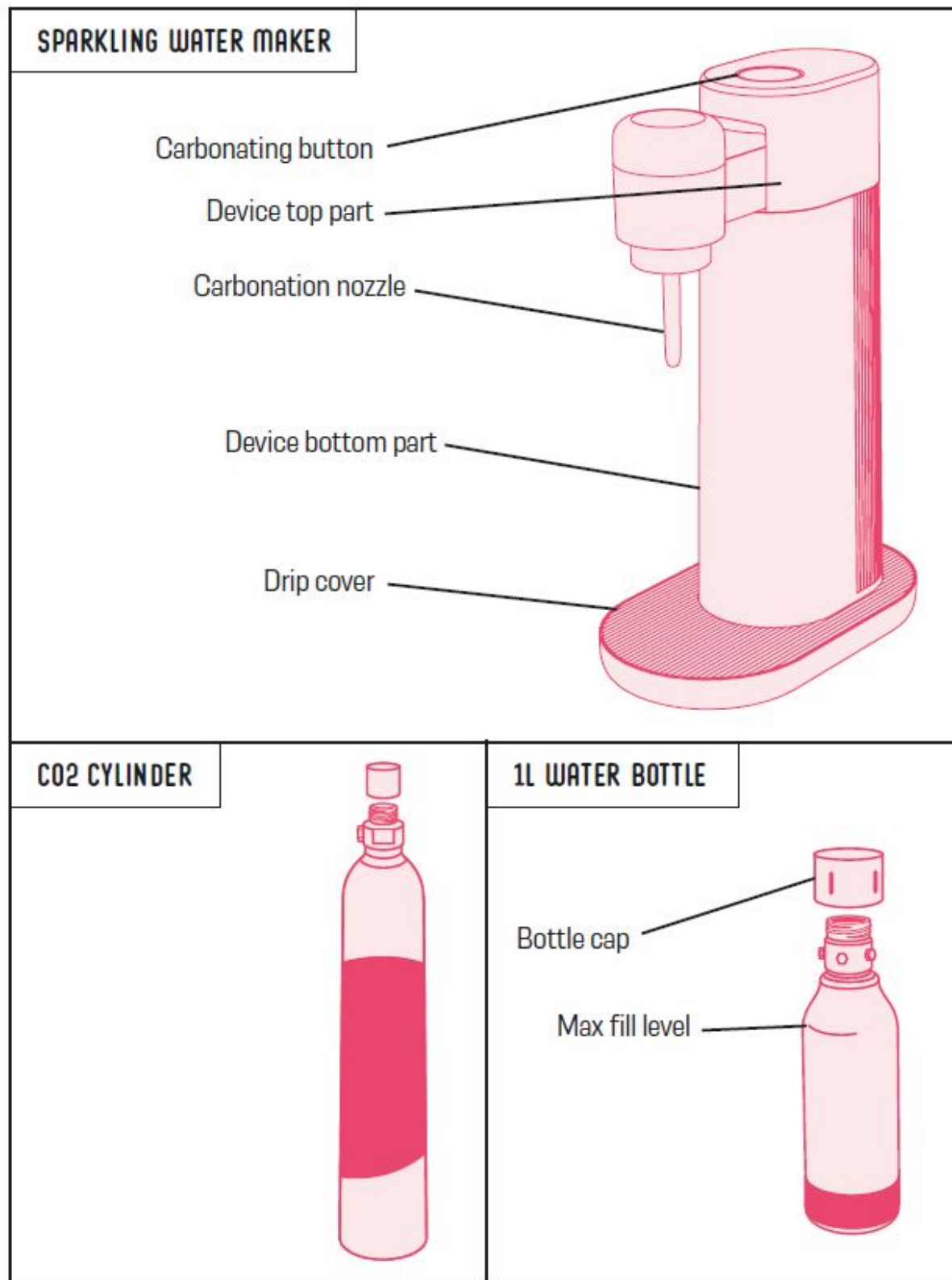
3. **WARNING** Do not use the appliance if you notice or suspect a defect or damage. Contact your dealer, importer or manufacturer.
4. Do not make any modifications or repairs to the device and accessories. Repairs may be made only by our authorized service personnel.
5. Never remove the water bottle during carbonation. Do not discharge a CO2 cylinder unless a Mysoda water bottle is attached to your sparkling water maker.
6. Only carbonate drinking water. Add flavours after carbonation.
7. Always place the device on a level, stable, and water-resistant surface.
8. The device must always be in an upright position when used.
9. Do not immerse the device in water and do not clean it during use.
10. Only use the device when a filled bottle is inserted.
11. Never attempt to carbonate an empty bottle with CO2.
12. Before each use, inspect that the CO2 cylinder is firmly attached to the device
13. Never transport the device with a full water bottle attached to it.
14. Never transport the device with the CO2 cylinder attached to it.
15. Use only Mysoda water bottles with this device.
16. Never use sharp tools, abrasives or chemical cleaners to clean the device. For cleaning, we recommend a mild hand dishwashing detergent and a soft damp cloth.
17. The device warranty is only valid for non-commercial use.
18. Do not store water bottles in a freezer.
19. Do not store water bottles in a dishwasher or in hot water.
20. Do not store water bottles close to any heat source, such as an oven or stove or inside a hot car.
21. Check the expiration time on the water bottle before using it. The expiry date is indicated in the form of month / year. Do not use an expired bottle after the last month of use.
22. Do not use the bottle if deformed, scratched, or discoloured, or if the expiration date has passed.
23. In the above cases, replace the water bottle with a new one.
24. Never place a bottle in a dishwasher. Never use brushes, abrasives, or chemical cleaners. Hand wash bottle with mild detergent and warm water. If necessary, use a soft bottle brush.

WARNINGS FOR CARBON DIOXIDE (CO2) CYLINDER

25. Inspect the CO2 cylinder before use. If the cylinder or the valve attached to it is damaged, do not use it, but contact your dealer, importer or manufacturer.
26. Do not attempt to modify, puncture or incinerate the cylinder.
27. Do not throw the cylinder or cause it to fall.
28. Do not store the CO2 cylinder in a freezer.
29. If the CO2 cylinder is colder or warmer than room temperature, it must be gradually brought to room temperature. Do not place it in the freezer or on a heat source to speed up the process.
30. **WARNING Food Safety Hazard:**
 1. Use only food / beverage grade carbon dioxide cylinders purchased from an authorized dealer.
 2. Never use a carbon dioxide cylinder intended for non-food use.
 3. Never use any adapter that permits use of non-beverage grade CO2 or non-beverage CO2 cylinders.
31. **WARNING** CO2 cylinder contents are under pressure.
32. **WARNING Explosion Hazard.** Always store CO2 cylinders in a cool, dry place, away from any type of heat exposure. Exposing to heat can cause cylinder pressure to build and release CO2 gas unexpectedly.

33. **WARNING** Do not touch the cylinder if CO₂ is being released; wait until all the CO₂ is discharged and the cylinder has come to room temperature. In the event of a leak, ventilate the house or apartment well. If you feel unwell, contact your doctor.
34. **WARNING** Frostbite injury risk. Rapid depletion of CO₂ gas can cause skin to freeze.

PARTS AND FEATURES



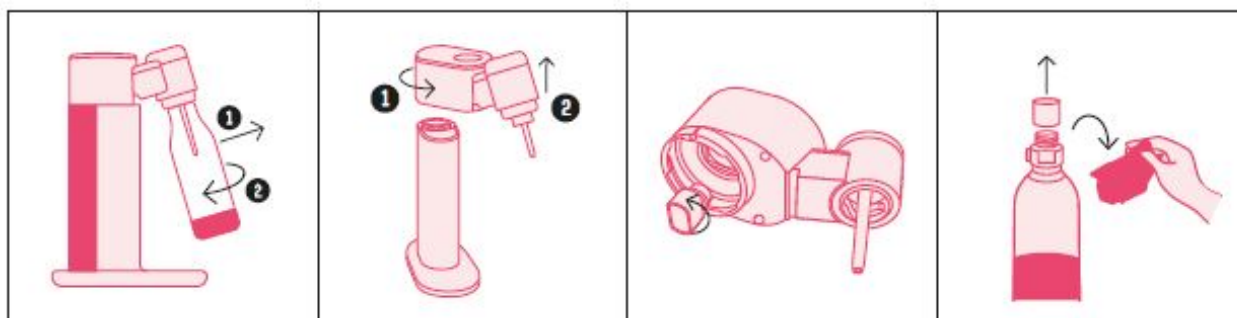
BEFORE THE FIRST USE:

Hand-wash the water bottle with warm water and hand dishwashing detergent. Rinse well and wipe outside with a soft cloth to dry. **WARNING:** Never wash water bottles in a dishwasher or in hot water. Harsh chemicals will damage the water bottle.

INSTALLING THE CO2 CYLINDER

NOTE: The device can use 60 litres and 130 litres CO2 cylinders. 130-litre cylinders are available on a limited basis and only in certain countries.

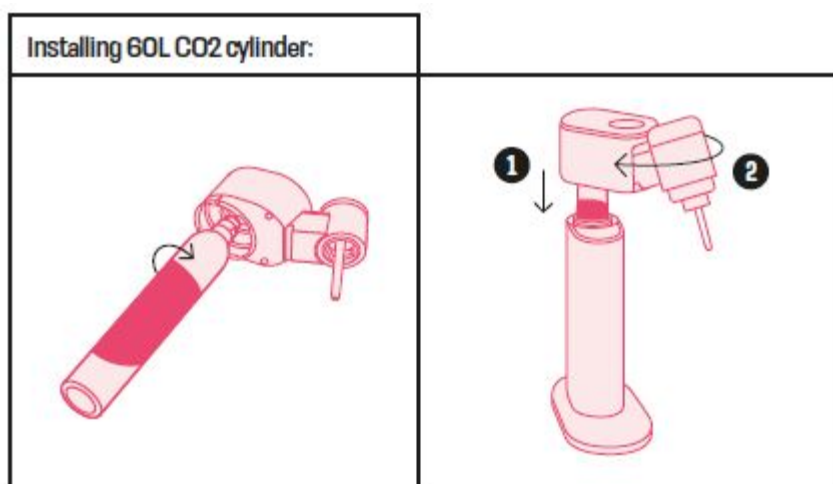
1. Remove the water bottle by pulling the bottle and carbonation nozzle towards yourself, and then unscrew it (one quarter clockwise).
2. Uninstall the top part of the device body by turning it anti-clockwise.
3. Unscrew the black thread protective cap on the top part of the device body.
4. Remove the seal and cap from the CO2 cylinder.



CHANGING THE CO2 CYLINDER:

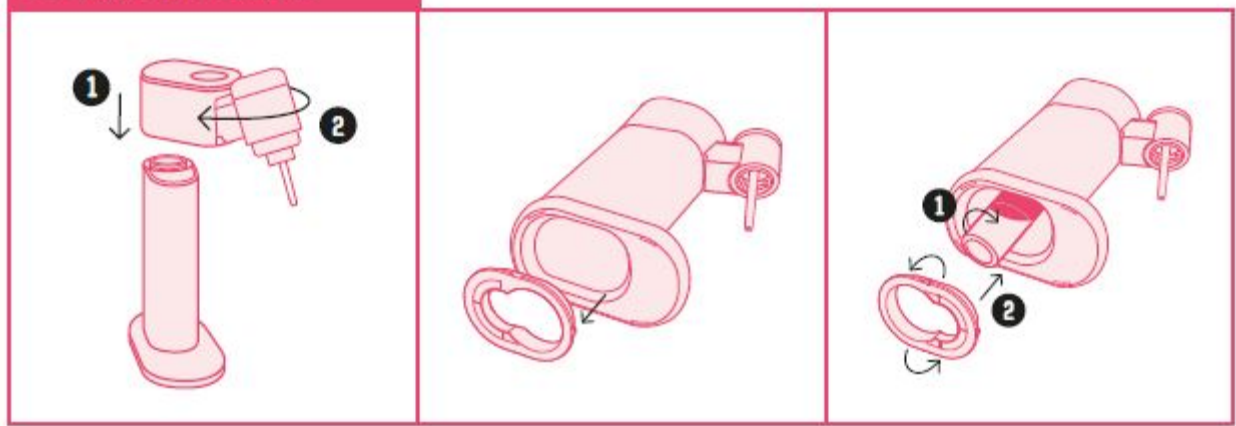
After the CO2 cylinder is empty, replace the CO2 cylinder in the same way as the first time you installed the cylinder.

5. Install the CO2 cylinder by screwing it clockwise. Attach the cylinder firmly enough, but do not tighten too much.
6. Carefully insert the CO2 cylinder and top part together to the bottom part. Turn the top part clockwise until it clicks into place.



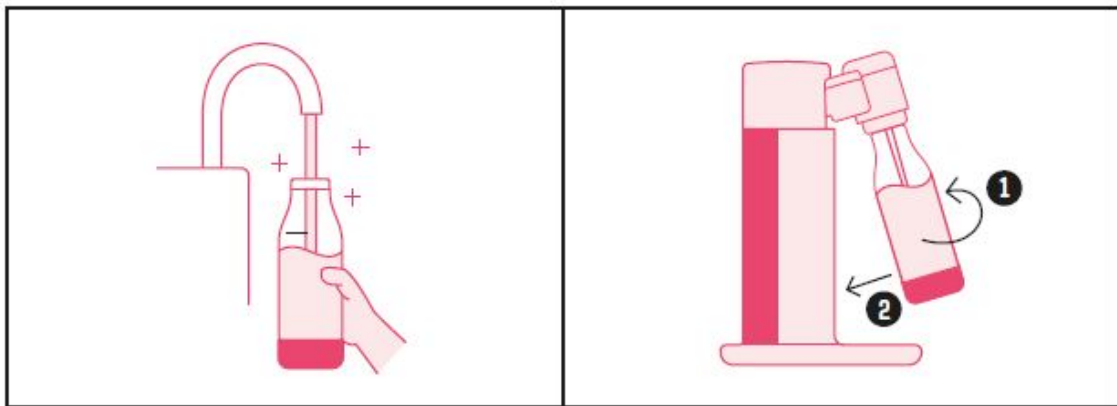
7. Carefully insert the top part to the bottom part. Turn the top part clockwise until it clicks into place.
8. If you are using a 130 litre CO2 cylinder, turn over the adapter on the bottom of the unit, so that you can install a larger cylinder.

Installing 130L CO2 cylinder:

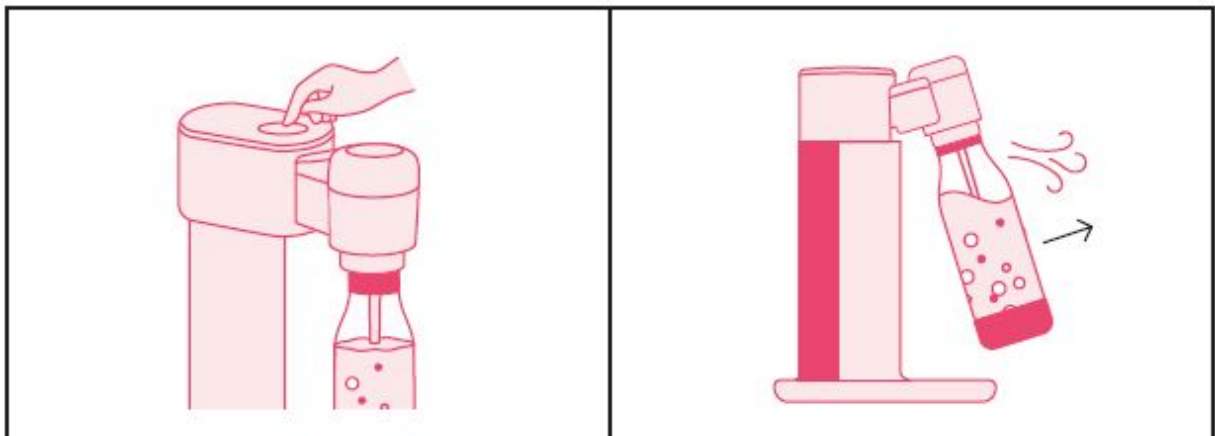


HOW TO MAKE SPARKLING WATER

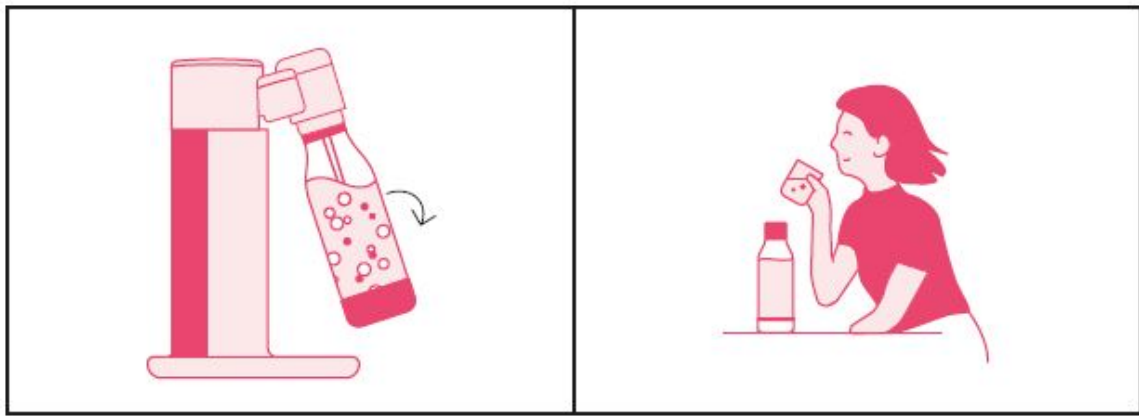
1. Fill the water bottle with cold water up to the fill line.
2. To insert the water bottle, make sure that the device is in a fully upright position and the bottle quick-lock is angled forward. Then insert the bottle in quick-lock and turn one quarter anti-clockwise to lock. Push the bottle towards the device to a vertical position.



3. Push the carbonation button 2–3 times, stop when you hear a hissing sound.
4. Pull the bottle towards yourself to release pressure inside the bottle.



5. Release the bottle by turning it one-quarter clockwise.
6. Enjoy your carbonated water or add the desired flavor.

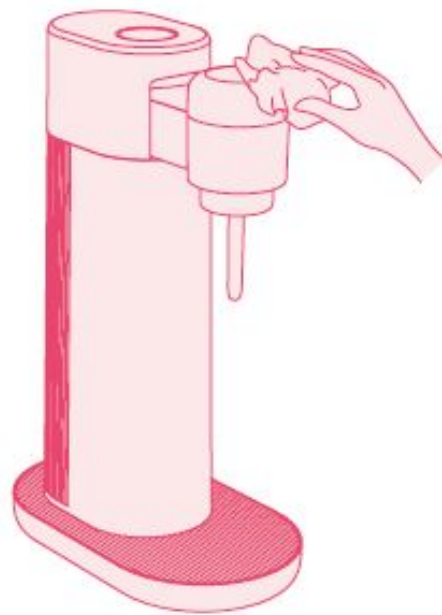


NOTE: Only use compatible CO2 cylinders and Mysoda water bottles. Never carbonate if the bottle is empty, not fully inserted with water or if water is above the fill line.

CARE AND CLEANING OF YOUR DEVICE

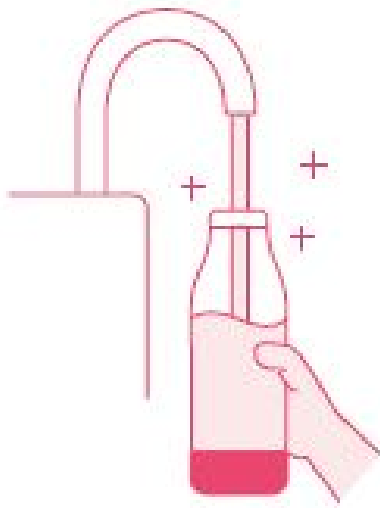
1. SPARKLING WATER MAKER:

To clean your sparkling water maker, wipe with a damp cloth. Do not immerse the device in water. Do not use any solvents or abrasive cleaners, since this could damage the surface.



2. WATER BOTTLE:

Rinse the water bottle with clean water after each use. Wash the bottle by hand with warm water and hand dishwashing detergent. Rinse well. Wipe the outside with a soft cloth to dry.



3. CO2 CYLINDER:

A used CO2 cylinder can be refilled by your Mysoda dealer. Return the empty cylinder so that you only pay for the gas refill.



Useful tips:

- Use as cold water as possible. You can cool down the water in a refrigerator before adding bubbles.
- Buy a couple of extra water bottles for your home so that you can provide sparkling water and other fresh beverages for even a larger party.
- Buy another CO2 cylinder in your home so that you can replace it as soon as you run out of gas. Extra cylinders are available from Mysoda dealers.
- Check out the Mysoda flavor concentrate selection. Our range includes naturally sweetened and sugar-free options for many tastes.
- By using well-flowing Mysoda flavors you can mix your drink directly in the glass. This keeps your water bottles clean and fresh longer.
- By adjusting the amount of flavour concentrate, you can prepare a drink that tastes just right for you.

TECHNICAL SPECIFICATIONS

- Max. operating pressure: 10 bar/145 Psi
- Max. operating temperature: 40°C/104°F
- Bottle capacity: 1.0 L (33.8 oz.)
- Max. the filling volume of the bottle: 0.85L (28,7 oz)
- Requires no electricity
- Mysore is a registered trademark of Mysoda Oy.

WARRANTY

We want to make sure that you enjoy your Mysoda sparkling water maker for a long time. To ensure a complete user experience for you, our equipment has a twenty-four (24) month warranty from the date of purchase. Our

warranty is valid for household use. The warranty does NOT cover the following:

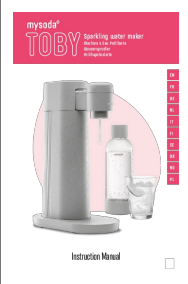
- Defects caused by carbonating other liquid than water.
- Wear and tear under normal consumer use (e.g. discoloration).
- Defects and damage resulting from the use of a water bottle after the expiration time.
- Defects and damage caused by a CO2 Cylinder are used past its expiration date.
- Defects due to damage during transport and any abnormal household use.
- Defects due to the use of CO2 cylinders sold by non-authorized dealers.
- Defects due to improper use, modification, or commercial use of the sparkling water maker.

If your Mysoda device needs servicing, contact your local Mysoda retailer or contact Mysoda directly by emailing us at info@mysoda.eu or visiting our website: www.mysoda.eu.

TROUBLESHOOTING

ISSUE	PROBABLE CAUSE	SOLUTION
Water bottle can't be attached to the quick lock	Quick-lock is in wrong position	Pull the quick lock and nozzle towards yourself. Attach the bottle by turning one quarter anti-clockwise
Water bottle can't be released from the quick lock	Water bottle is in wrong position	Gently pull the water bottle towards yourself until it reaches its fully forward tilt position. Release the bottle by turning one quarter clockwise.
Water bottle overflows during the carbonation	Bottle is overfilled	Fill the bottle with water up to the fill line indicating the maximum level
	Carbonating button is pressed too long	Do not press the carbonating button for longer than 1–2 seconds at a time
Water is not well carbonated/bubbly enough	CO2 cylinder is running low	Replace the used CO2 cylinder with a new one
	Water is too warm	Make sure the water used is as cold as possible as CO2 dissolves better in cold water
	CO2 cylinder is not screwed in tight enough	Screw the CO2 cylinder tightly into the device
CO2 cylinder leaks after installation	CO2 cylinder is not screwed in tight	Remove the CO2 cylinder and reattach it securely. Do it by hand, do not use tools. Do not overtight.
130 litre cylinder can't be installed	The bottom adapter is in the wrong position	Uninstall the bottom adapter and put it back the other way round.
Small, white ice particles form around the nozzle during the carbonation	This is normal, especially when the water is cold	
Device makes a whistling noise during the carbonation	This is normal and ends once the carbonation is completed	

Documents / Resources

 The image shows the cover of the instruction manual for the Mysoda Toby Sparkling Water Maker. It features a white and grey water maker unit, a clear plastic bottle, and a glass of sparkling water. The text on the cover includes 'mysoda', 'TOBY', 'Sparkling water maker', 'Hyvä vesi tulee läheltä', and 'From Tap to Table Mysoda'. The words 'Instruction Manual' are printed at the bottom.	<p>mysoda Toby Sparkling Water Maker [pdf] Instruction Manual</p> <p>Toby Sparkling Water Maker</p>
---	---

References

- [Mysoda Suomi | Hyvä vesi tulee läheltä](#)
- [From Tap to Table | Mysoda](#)

Manuals+.