



mysoda Ruby-2 Sparkling Water Maker Instruction Manual

[Home](#) » [mysoda](#) » mysoda Ruby-2 Sparkling Water Maker Instruction Manual 

Contents

- 1 [mysoda Ruby-2 Sparkling Water Maker](#)
- 2 [Product Information](#)
- 3 [Important Safety Precautions](#)
- 4 [Warnings for the Device and the Use of It](#)
- 5 [Product Usage Instructions](#)
- 6 [PARTS AND FEATURES](#)
- 7 [INSTALLING THE CO2 CYLINDER](#)
- 8 [HOW TO MAKE SPARKLING WATER](#)
- 9 [CARE AND CLEANING OF YOUR DEVICE](#)
- 10 [USEFUL TIPS](#)
- 11 [TECHNICAL SPECIFICATIONS](#)
- 12 [WARRANTY](#)
- 13 [TROUBLESHOOTING](#)
- 14 [Documents / Resources](#)
 - 14.1 [References](#)
- 15 [Related Posts](#)



mysoda Ruby-2 Sparkling Water Maker



Product Information

The Ruby Sparkling Water Maker is a device designed to carbonate drinking water to produce sparkling water. The device requires the use of Mysoda water bottles and carbon dioxide (CO₂) cylinders.

Important Safety Precautions

It is important to read and follow the instructions and safety precautions outlined in the instruction manual before using the sparkling water maker. Failure to follow these precautions may result in damage to the device or personal injury.

Warnings for the Device and the Use of It

- This product is not intended for use by children under 12 years of age without adult supervision.
- The device is not intended for use by persons with reduced physical, sensory, or mental capabilities, unless they are closely supervised and instructed concerning use of the appliance by a person responsible for their safety.
- Do not use the device if you notice or suspect a defect or damage. Contact your dealer, importer or manufacturer.
- Do not make any modifications or repairs to the device and accessories. Repairs may be made only by authorized service personnel.
- Never remove the water bottle during carbonation. Do not discharge a CO₂ cylinder unless a Mysoda water bottle is attached to your sparkling water maker.
- Only carbonate drinking water. Add flavours after carbonation.
- Always place the device on a level, stable, and water-resistant surface. The device must always be in an upright position when used.
- Do not immerse the device in water and do not clean it during use.
- Only use the device when a filled bottle is inserted. Never attempt to carbonate an empty bottle with CO₂.
- Before each use, inspect that the CO₂ cylinder is firmly attached to the device.
- Never transport the device with a full water bottle or CO₂ cylinder attached to it.
- Use only Mysoda water bottles with this device.
- Never use sharp tools, abrasives or chemical cleaners to clean the device. For cleaning, we recommend a mild

hand dishwashing detergent and a soft damp cloth.

- The device warranty is only valid for non-commercial use.

Warnings for the Plastic Water Bottles

- Do not place plastic water bottles in a freezer.
- Do not store plastic water bottles in a dishwasher or in hot water.
- Do not store plastic water bottles close to any heat source, such as an oven or stove or inside a hot car.
- Check the expiration time on the water bottle before use.
- Do not use the plastic water bottle if deformed, scratched, or discoloured, or if the expiration date has passed.
- In the above cases, replace the plastic water bottle with a new one.
- Do not wash plastic water bottles in a dishwasher or in hot water. Never use brushes, abrasives, or chemical cleaners. Hand wash bottle with mild detergent and warm water. If necessary, use a soft bottle brush.

Warnings for Carbon Dioxide (CO₂) Cylinder

- Inspect the CO₂ cylinder before use. If the cylinder or the valve attached to it is damaged, do not use it, but contact your dealer, importer or manufacturer.
- Do not attempt to modify, puncture or incinerate the cylinder.
- Do not throw the cylinder or cause it to fall.
- Do not store the CO₂ cylinder in a freezer.
- If the CO₂ cylinder is colder or warmer than room temperature, allow it to reach room temperature before use.
- **WARNING** Food Safety Hazard:
 - Use only food / beverage grade carbon dioxide cylinders purchased from an authorized dealer.
 - Never use a carbon dioxide cylinder intended for non-food use.
 - Never use any adapter that permits use of non-beverage grade CO₂ or non-beverage CO₂ cylinders.
- **WARNING** CO₂ cylinder contents are under pressure.
- **WARNING** Explosion Hazard. Always store CO₂ cylinders in a cool, dry place, away from any type of heat exposure. Exposure to heat can cause cylinder pressure to build and release CO₂ gas unexpectedly.
- **WARNING** Do not touch the cylinder if CO₂ is being released; wait until all the CO₂ is discharged and the cylinder has come to room temperature. In the event of a leak, ventilate the house or apartment well. If you feel unwell, contact your doctor.
- **WARNING** Frostbite injury risk. Rapid depletion of CO₂ gas can cause skin to freeze.

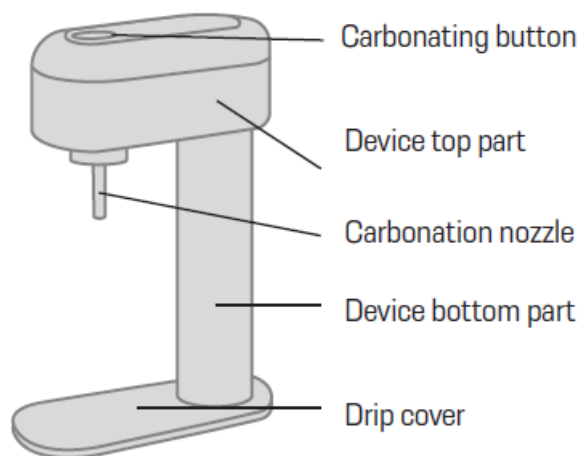
Product Usage Instructions

1. Place the sparkling water maker on a level, stable, and water-resistant surface.
2. Check that the CO₂ cylinder is tightly attached to the device.
3. Fill a Mysoda water bottle with drinking water up to the marked level.
4. Insert the filled water bottle into the sparkling water maker.
5. Press the carbonation button to carbonate the water to your desired level of fizziness. Do not remove the water bottle during carbonation.
6. Once carbonated, remove the water bottle from the device.
7. Add flavorings to the carbonated water if desired.

8. Enjoy your homemade sparkling water!

PARTS AND FEATURES

BEFORE FIRST USE: Hand-wash the water bottle with lukewarm water and hand dishwashing detergent. Rinse well and wipe outside with a soft cloth to dry. **WARNING:** Never wash plastic water bottles in a dishwasher or in hot water. Harsh chemicals will damage the water bottle.



SPARKLING WATER MAKER

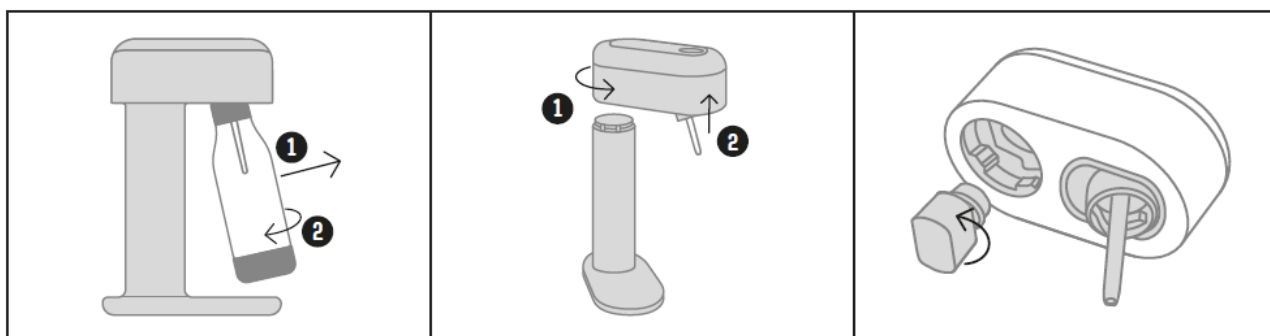
INSTALLING THE CO2 CYLINDER



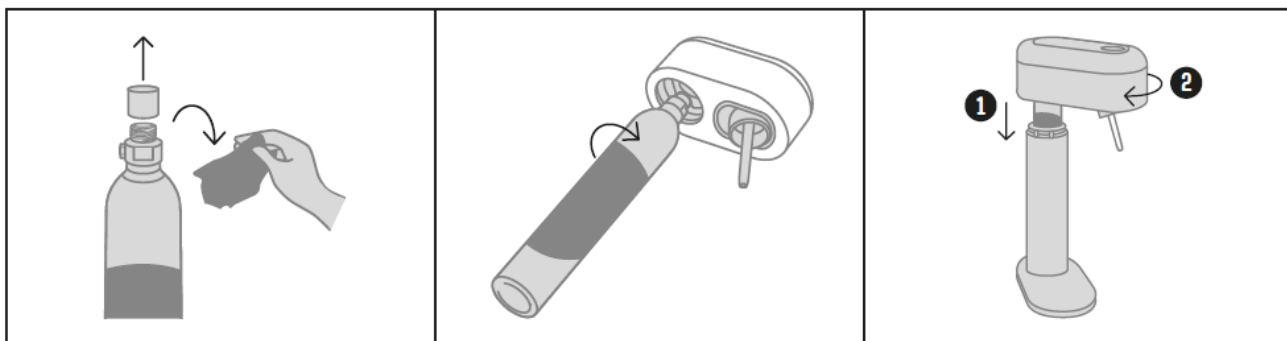
CO2 CYLINDER

1L WATER BOTTLE

1. Remove the water bottle by pulling the bottle and carbonation nozzle towards yourself, and then unscrew it (one quarter clockwise).
2. Uninstall the top part of the device body by turning it anti-clockwise.
3. Unscrew the black thread protective cap on the top part of the device body



4. Remove the seal and cap from the CO2 cylinder.
5. Install the CO2 cylinder by screwing it clockwise. Attach the cylinder firmly enough, do not tighten it too firmly.
6. Carefully insert the attached CO2 cylinder and the top part into the bottom part. Turn the top part clockwise until it clicks into place.



COMPATIBLE CO2 CYLINDERS

Mysoda Ruby, as well as all the other Mysoda machines, use the most common carbon dioxide cylinder with screw-in system, so that you can always easily find an exchange for your empty cylinder at your nearest store. After the CO2 cylinder is empty, replace the CO2 cylinder in the same way as the first time you installed the cylinder.

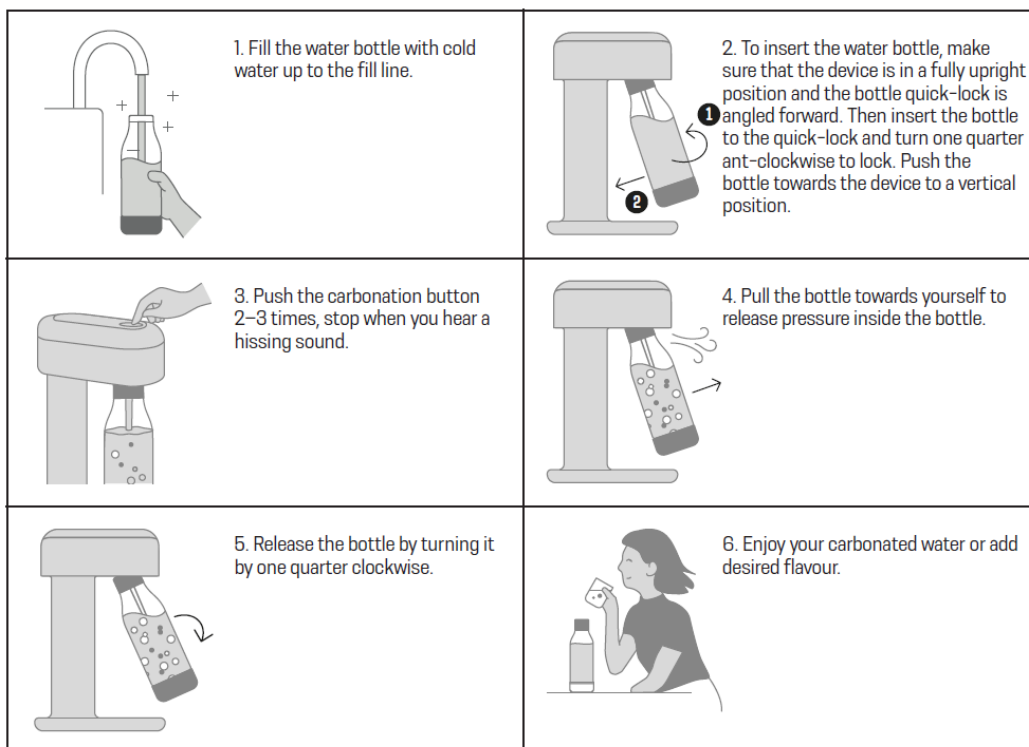


Usage tip: A used CO2 cylinder can be exchanged by a CO2 cylinder dealer near you. Return the empty cylinder so that you only pay for the gas refill.



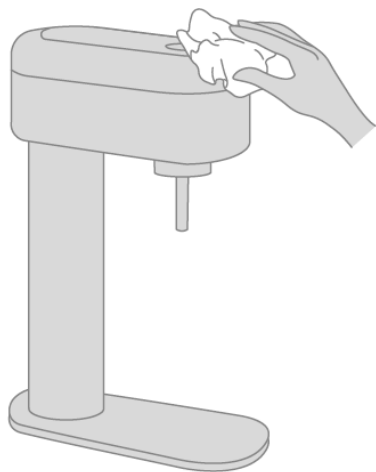
Usage tip: Keep a spare CO2 cylinder in your home so that you can replace it as soon as you run out of gas. Extra cylinders are available from CO2 cylinder dealers near you.

HOW TO MAKE SPARKLING WATER



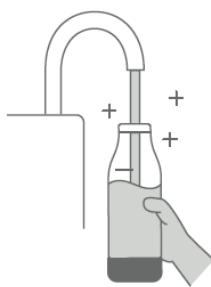
NOTE: Only use compatible CO2 cylinders and Mysoda water bottles. Never carbonate if the bottle is empty, not filled up to the fill line or if water is above the fill line.

CARE AND CLEANING OF YOUR DEVICE



SPARKLING WATER MAKER:

To clean your sparkling water maker, wipe with a damp cloth. Do not immerse the device in water. Do not use any solvents or abrasive cleaners, since this could damage the surface.



WATER BOTTLE:







Rinse the water bottle with clean water after each use. Wash the bottle by hand with hand warm water and hand dishwashing detergent. Rinse well. Wipe the outside with a soft cloth to dry.



CO2 CYLINDER:

A used CO2 cylinder can be refilled by your Mysoda dealer. Return the empty cylinder so that you only pay for the gas refill.

USEFUL TIPS

	Use as cold water as possible. You can cool down the water in a refrigerator before adding bubbles.
	By using Mysoda drink mixes you can mix your drink directly in the glass. This keeps your water bottles clean and fresh longer.
	Keep a spare CO2 cylinder in your home so that you can replace it as soon as you run out of gas. Extra cylinders are available from Mysoda dealers. Extra cylinders are available from Mysoda dealers.
	Buy extra water bottles for your home so that you can provide sparkling water and other refreshing beverages for an even larger party.
	Check out the Mysoda drink mix selection. Our range includes naturally sweetened and sugar-free options for every taste.
	By adjusting the amount of flavour concentrate, you can prepare a drink that tastes just right for you.

TECHNICAL SPECIFICATIONS

- Max. operating pressure: 10 bar/145 Psi
- Max. operating temperature: 40°C/104°F
- Bottle capacity: 1.0 L (33.8 oz.)
- Max. filling volume of the bottle: 0.85L (28,7 oz)
- Requires no electricity
- Mysoda is a registered trademark of Mysoda Oy.

WARRANTY

We want to make sure that you enjoy your Mysoda sparkling water maker for a long time. To ensure a complete user experience for you, our equipment has a twentyfour (24) month warranty from the date of purchase. Our warranty is valid for household use.

The warranty does NOT cover the following:


- Defects caused by carbonating other liquid than water.
- Wear and tear under normal consumer use (e.g. discoloration).
- Defects and damage resulting from the use of a water bottle after expiration time.
- Defects and damage caused by a CO2 Cylinder used past its expiration date.
- Defects due to damage during transport and any abnormal household use.
- Defects due to the use of CO2 cylinders sold by non-authorized dealers.
- Defects due to improper use, modification or commercial use of the sparkling water maker.
- If your Mysoda device needs servicing, contact your local Mysoda retailer or contact Mysoda directly by emailing us at info@mysoda.eu or visiting our website: www.mysoda.eu.

TROUBLESHOOTING

Water bottle can't be attached to the quick lock	Quick lock is in wrong position	Pull the quick lock and nozzle towards yourself. Attach the bottle by turning one quarter anti-clockwise.
Water bottle can't be released from the quick lock	Water bottle is in wrong position	Gently pull the water bottle towards yourself until it reaches its fully forward tilt position. Release the bottle by turning one quarter clockwise.
Water bottle overflows during the carbonation	Bottle is overfilled.	Fill the bottle with water up to the fill line indicating the maximum level.
	Carbonating button is pressed too long	Do not press the carbonating button for longer than 1–2 seconds at a time.
	CO2 cylinder is running low	Replace the used CO2 cylinder with a new one.

Water is not well carbonated/bubbly enough.	Water is too warm	Make sure the water used is as cold as possible as CO2 dissolves better in cold water.
	CO2 cylinder is not screwed in tight enough	Screw the CO2 cylinder tightly into the device.
CO2 cylinder leaks after installation	CO2 cylinder is not screwed in tight enough	Remove the CO2 cylinder and reattach it securely. Do it by hand, do not use tools. Do not overtighten.
Small, white ice particles form around the nozzle during the carbonation	This is normal, especially when the water is cold	Pull the bottle towards you to release the pressure inside the bottle, which also melts the ice particles into the water.
Device makes a whistling noise during the carbonation	This is normal and ends once the carbonation is completed	

Documents / Resources

	mysoda Ruby-2 Sparkling Water Maker [pdf] Instruction Manual Ruby-2 Sparkling Water Maker, Ruby-2, Sparkling Water Maker, Water Maker, Maker
---	---

References

- [Mysoda Suomi | Hyvä vesi tulee läheltä](#)
- [From Tap to Table | Mysoda](#)