

myQX 3.0 MyQ OCR Server User Guide

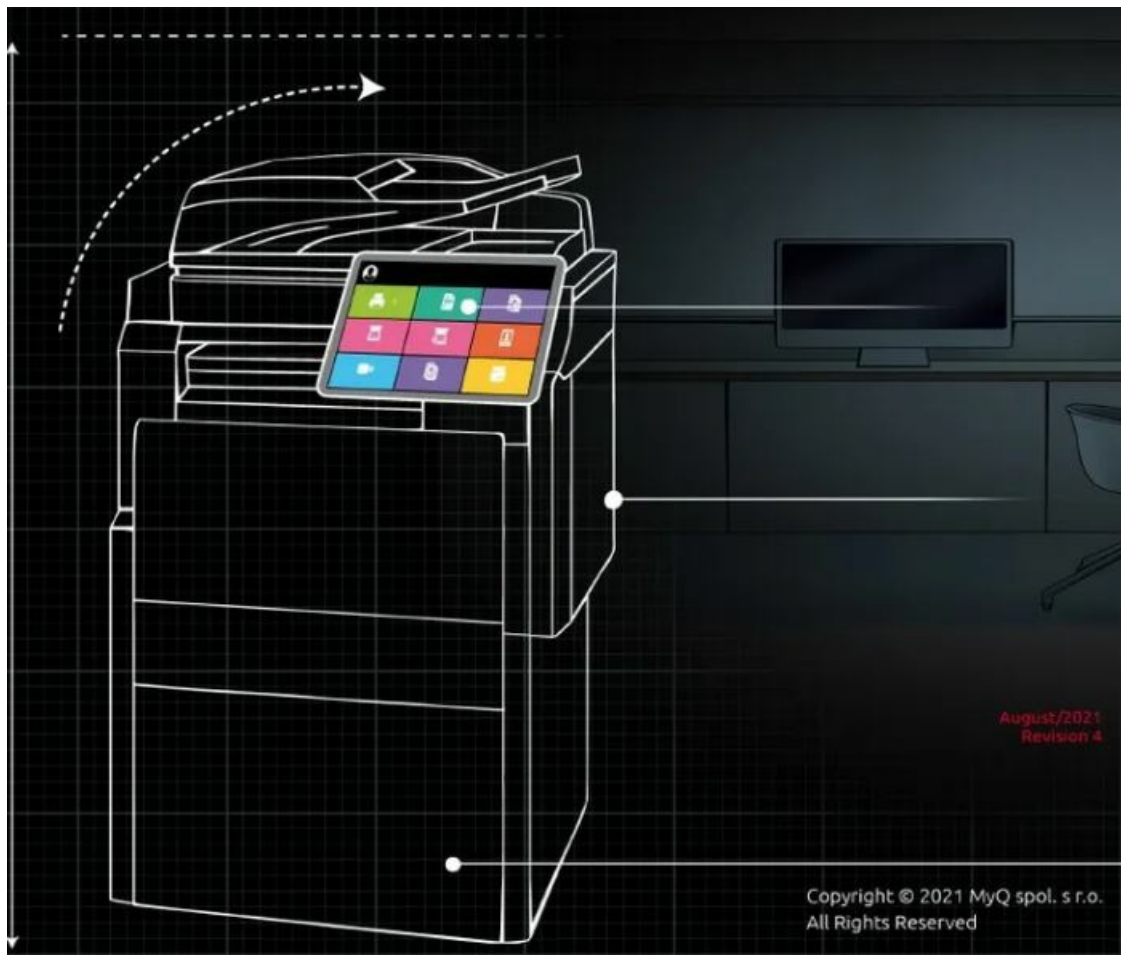
[Home](#) » [myQX](#) » myQX 3.0 MyQ OCR Server User Guide 

Contents

- 1 myQX 3.0 MyQ OCR Server
- 2 Product Information: MyQ OCR Server 3.0
- 3 Product Usage Instructions: Setting up OCR in MyQ
- 4 About MyQ OCR Server 3.0
- 5 Release Notes
- 6 Setting up OCR in MyQ
- 7 Installation
- 8 MyQ OCR Server Configuration
- 9 Tesseract engine
- 10 6 Scanning to OCR
- 11 Scanning to OCR via Easy Scan
- 12 OCR Processing
- 13 Update and Uninstallation
- 14 Business Contacts
- 15 Documents / Resources
 - 15.1 References
- 16 Related Posts



myQX 3.0 MyQ OCR Server



Product Information: MyQ OCR Server 3.0

MyQ OCR Server is a software application that allows for optical character recognition (OCR) capabilities within the MyQ printing and scanning system. The OCR Server 3.0 version provides enhanced features and improvements compared to previous versions. It is designed to work in conjunction with MyQ Print Server 10 or newer.

Requirements:

- The software should be installed under the Local System account.
- MyQ Print Server version 10 or newer is required.

Release Notes:

The release notes provide detailed information about the changes and updates made in each version of the MyQ OCR Server. Please refer to the release notes for specific details.

Product Usage Instructions: Setting up OCR in MyQ

1. Access the MyQ web administrator interface.
2. Navigate to the Scanning & OCR settings tab (MyQ, Settings, Scanning & OCR).
3. In the OCR section, ensure that the OCR feature is enabled. If it is not enabled, enable it.
4. Select "MyQ OCR Server" as the OCR server type.
5. In the OCR working folder field, you have the option to change the folder where the scanned data is sent to. It is recommended to use the default folder (C:\ProgramData\MyQ\OCR) unless there is a specific reason to

change it. Note that the same folder needs to be set as the Working folder on the OCR Server (refer to MyQ OCR Server Configuration for further instructions).

Following these instructions will ensure that the OCR functionality is properly set up and ready to use within the MyQ system.

About MyQ OCR Server 3.0

Optical Character Recognition is a service that converts scanned documents to a searchable and editable format, such as an MS Word document or a searchable PDF. To employ this functionality in MyQ, you can either use the MyQ Optical Character Recognition (OCR) server, which is a part of the MyQ solution, or you can use a third-party application.

Unlike third-party OCR applications, the MyQ OCR Server is integrated with the MyQ system, which makes it simple to install and easy to use.

Within the installation of the server, you can utilize the Tesseract engine.

1.1 Requirements

- Operating System
 - Windows Server 2012/2012 R2/2016/2019/2022, with all the latest updates; only 64bit OS supported.
 - Windows 8.1/ 10/ 11, with all the latest updates; only 64bit OS supported.
- Required level of privileges: user with administrator rights.
- Memory for processing multi-page documents: 1GB RAM minimum, 1,5GB recommended.
- HDD space: 1.6 GB for the installation.
- It is recommended to deploy the OCR server on a dedicated server.
- OCR Service is registered after the installation and, by default, it is running under the Local System account.

MyQ OCR Server 3.0 requires MyQ Print Server 10 or newer.

All changes compared to the previous version are listed in the release notes.

Release Notes

MyQ OCR Server 3.0

3.0 (Patch 1)

Bug Fixes

PDF/A compliance.

Improvements

- Mako 6.1 for PDF manipulation instead of HiQPdf and Pdfium.
- NEW FEATURE Support of TXT output format.

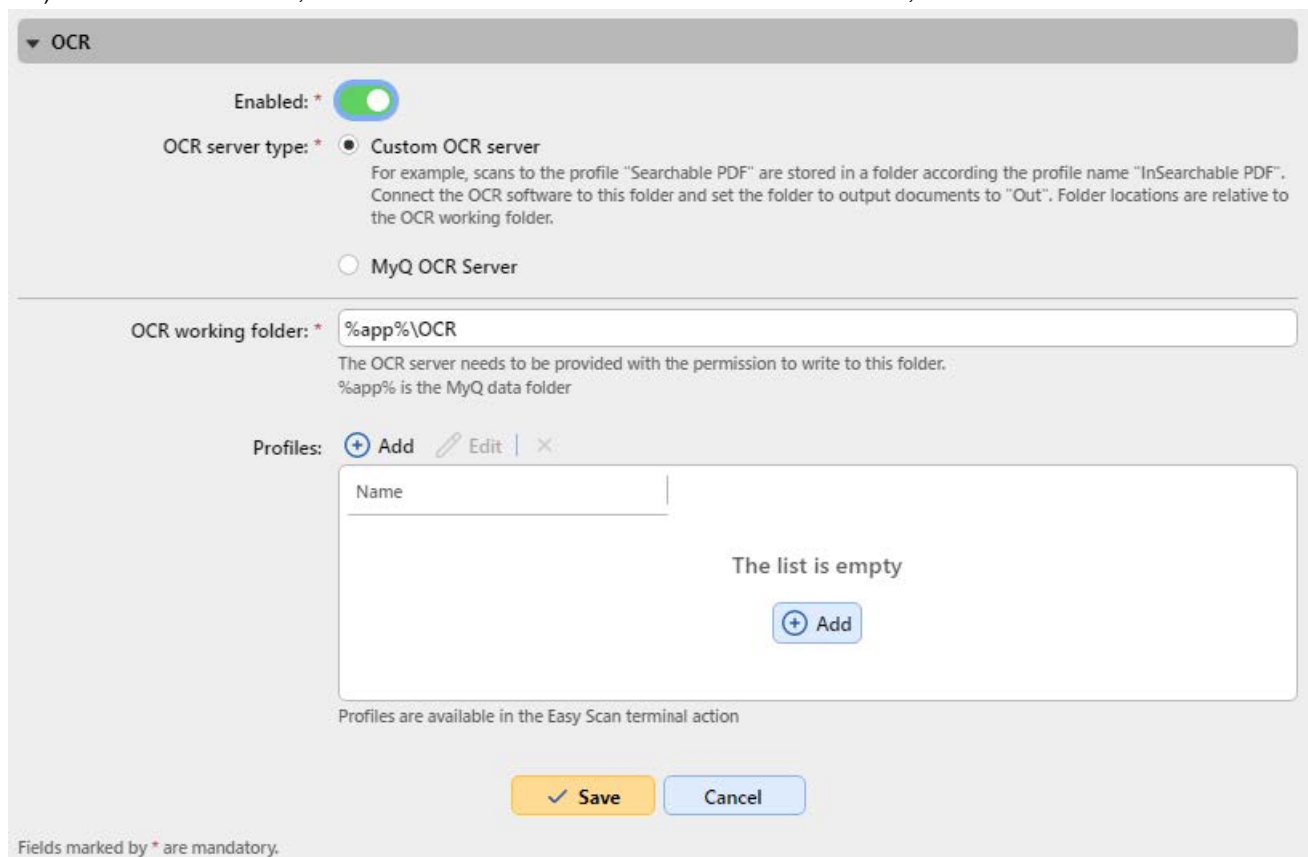
Changes

- Abbyy and Rossum engines removed.

- Mako 6.3.1 used for memory saving big scans.

Setting up OCR in MyQ

Go to the MyQ web administrator interface, in the Scanning & OCR settings tab (MyQ, Settings, Scanning & OCR). In the OCR section, make sure that the OCR feature is Enabled. If not, enable it.



▼ OCR

Enabled: ☒

OCR server type: ☒ Custom OCR server
For example, scans to the profile "Searchable PDF" are stored in a folder according the profile name "InSearchable PDF". Connect the OCR software to this folder and set the folder to output documents to "Out". Folder locations are relative to the OCR working folder.

☐ MyQ OCR Server

OCR working folder:
The OCR server needs to be provided with the permission to write to this folder.
%app% is the MyQ data folder

Profiles: [+ Add](#) [Edit](#) [X](#)

Name

The list is empty

[+ Add](#)

Profiles are available in the Easy Scan terminal action

[✓ Save](#) [Cancel](#)

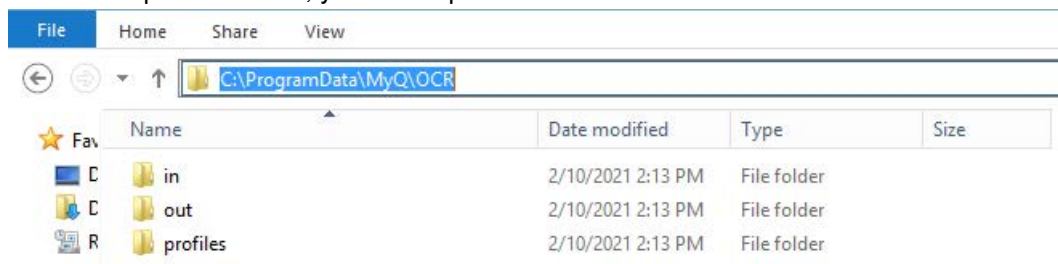
Fields marked by * are mandatory.

In the OCR server type, select MyQ OCR Server.

In the OCR working folder field, you can change the folder where the scanned data is sent to. It is recommended to use the default folder (C:\ProgramData\MyQ\OCR), unless there is a major reason for it. The same folder will have to be set as the Working folder on the OCR Server (see MyQ OCR Server Configuration).

Both the MyQ server and the OCR server must have full access (read/write) to the OCR working folder.

The OCR folder contains three sub-folders: in, out, profiles. In the in folder, the scanned documents are stored before being processed. In the out folder, the processed documents are saved by the OCR software and are ready to be sent. In the profiles folder, your OCR profiles are stored.



To enable users to convert documents to a specific output format, you need to create a profile of that type. The users will be able to send scans to use this profile either via a special email command or by selecting the profile when scanning via the Easy Scan terminal action on MyQ embedded terminals.

To create a new profile:

1. Click +Add next to Profiles. A new item with the settings of the new profile appears in the list below.
2. Type the Name of the profile, select the Output format from the list, and then click OK. The profile is saved.

To edit a profile:

1. Select the profile on the list and click Edit (or right-click and select Edit in the shortcut menu).
2. In the profile editing options, you can change the name and the output format of the profile.

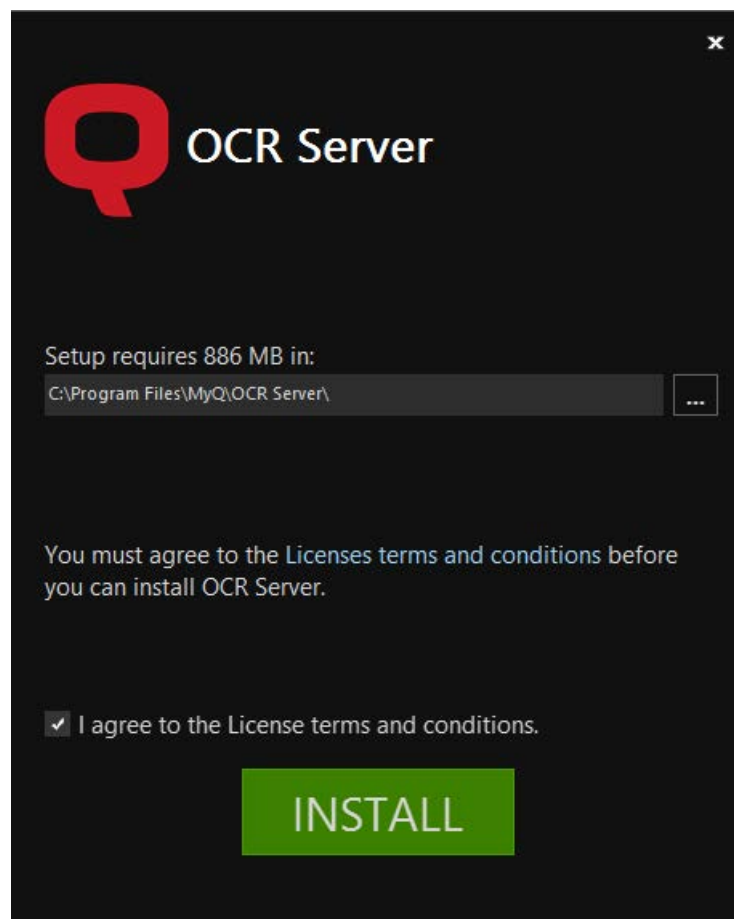
To delete a profile, select it and click the X (delete) button on the ribbon (or right-click and select Delete in the shortcut menu).

Click Save at the bottom of the screen to save your changes.

Installation

To install the MyQ OCR Server:

1. Download the latest available version of the MyQ OCR Server from the MyQ Community portal (MyQ OCR Server X.X.X.X).
2. Run the executable file. The OCR Server installation window appears.



3. Select the folder where you want to install the OCR server. The default path is: C:\Program Files\MyQ OCR Server\.
4. After this, you need to agree to the license terms and conditions to continue with the installation. Then click INSTALL. The OCR server is installed.
5. Click Finish to leave the installation wizard. The configuration window of the OCR server appears. The configuration steps are described below.

In case the file is blocked from your browser or OS, click Run or Allow, or modify your Windows Security settings to allow the installation of unknown apps (turn off App & browser control).

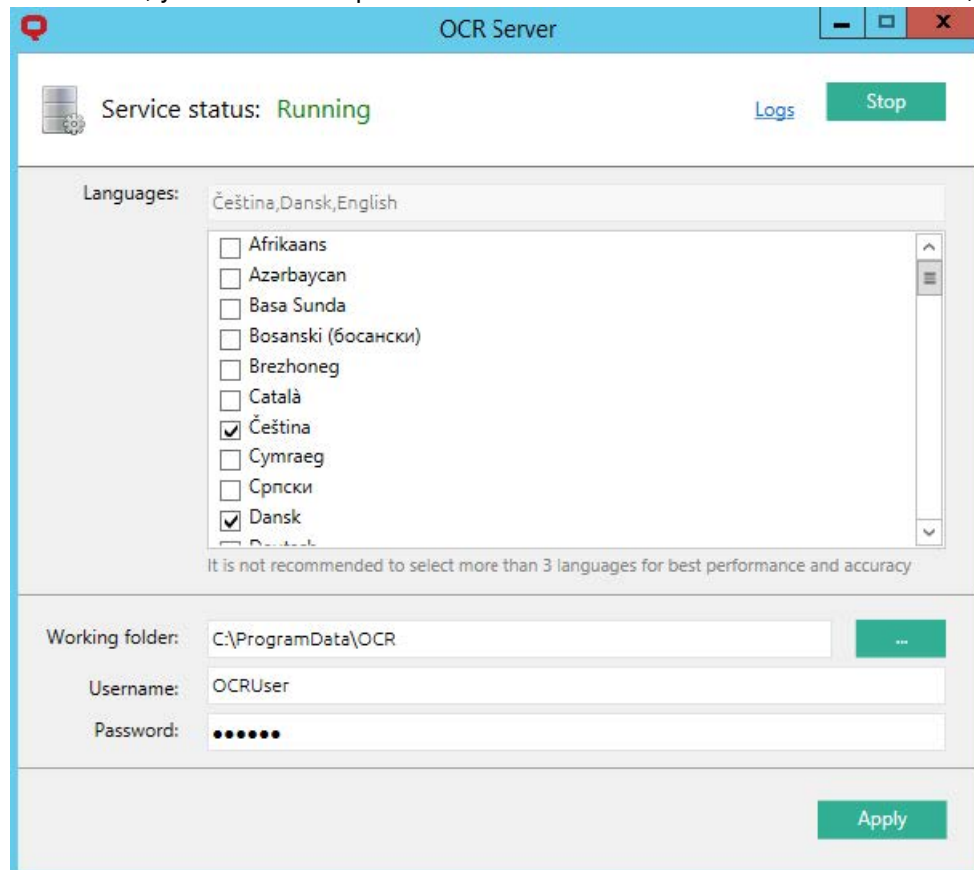
If you get the “Windows protected your PC” message when trying to run the file, click More info, and then click Run anyway, to begin the installation.

If you still cannot run the file, right click on it, and select Properties. In the General tab, next to Security, mark the Unblock checkbox, click Apply, and then OK. Run the file again and begin the installation.

MyQ OCR Server Configuration

The MyQ OCR Server can be configured in the OCR Server configuration window that opens automatically once the server’s installation is finished. It can also be opened via the MyQ OCR Server Settings application in Windows apps.

In the configuration window, you can also stop and start the Windows service of the OCR server, and open logs.



- **Languages** – While you can select all the available languages, it is recommended to select only those that are likely to be used within the OCR process. Selecting less languages increases the speed and accuracy of the OCR process.
- **Working folder** – This is the folder where the OCR server and the MyQ server exchange the OCR scanned files. The path entered here has to be the same as the path to the OCR working folder, set on the Scanning & OCR settings tab in the MyQ web administrator interface (the default folder is C: ProgramData\MyQ\OCR). In case you use a shared folder, enter the Username and Password for access to the folder.

Both the MyQ server and the OCR server must have full access (read/write) to the OCR working folder.

Click Apply for your changes to take effect.

To open the log files, click Logs at the top-right corner of the OCR Server configuration window.

To stop or restart the OCR Server Windows service, click Stop (or Start) at the top-right corner of the OCR Server

configuration window. You can also manage the service in the Windows Task Manager, where it is called OCRService.

Tesseract engine

With the Tesseract OCR engine, the pdf, pdfa, and txt formats are supported.

Supported languages:

Afrikaans (afr), Albanian (sqi), Azerbaijani (aze), Belarusian (bel), Bosnian (bos), Breton (bre), Bulgarian (bul), Catalan (cat), Cebuano (ceb), Corsican (cos), Croatian (hrv), Czech (ces), Danish (dan), Dutch/Flemish (ndl), English (eng), English Middle 1100-1500 (enm), Esperanto (epo), Estonian (est), Faroese (fao), Filipino (fil), Finnish (fin), French (fra), Gaelic (gla), Galician (glg), German (deu), Haitian (hat), Hebrew (heb), Hungarian (hun), Icelandic (ici), Indonesian (ind), Irish (gle), Italian (ita), Japanese (jpn), Javanese (jav), Kyrgyz (kir), Latin (lat), Latvian (lav), Lithuanian (lit), Macedonian (mkd), Malay (msa), Maltese (mlt), Maori (mri), Norwegian (nor), Occitan (oci), Polish (pol), Portuguese (por), Quechua (que), Romanian/Moldovan (ron), Russian (rus), Serbian (srp), Serbian Latin (srp_latn), Slovak (slk), Slovenian (slv), Spanish (spa), Sundanese (sun), Swahili (swa), Swedish (swe), Tajik (tgk), Tonga (ton), Turkish (tur), Ukrainian (ukr), Uzbek (uzb), Uzbek Cyrillic (uzb_cyrl), Vietnamese (vie), Welsh (cym), Western Frisian (fry), Yoruba (yor),
Азәрбајҹан, ქართული ენა – Georgian.

Selecting multiple languages will take much more time to process the files.

For further information about the engine, see the dedicated documentation from its developer.

6 Scanning to OCR

Scanning to OCR via Panel Scan

To send the scanned document to be processed by the OCR server, the user needs to type the receiver email address in the form: myqocr.*profilename*@myq.local where *profilename* is the name of the profile for the requested output, for example ocrpdf or ocrtxt.

OCR is case sensitive. If you use Panel Scan, the email address

myqocr.*folder*@myq.local must be the same as the OCR profile name.

The document is converted by the MyQ OCR Server and sent to the folder or email address that is set in the User's scan storage text box on the user's properties panel in the MyQ web administrator interface.

The screenshot shows a user's properties panel in the MyQ web administrator interface. The panel contains several input fields and a dropdown menu. The 'Full name' field is filled with 'Eliot Kate'. The 'Email' field is filled with 'eliot.kate@myq-solution.com'. The 'Phone' field is empty. The 'Personal number' field is empty. The 'Default language' dropdown menu is set to 'English (United States)'. The 'User's scan storage' field is highlighted with a red rectangle and contains the path '\\NB237\\Scanned Documents\\Eliot_Kate'. Below this field, there is a label 'Folder or email for storing scanned documents'.

Scanning to OCR via Easy Scan

The MyQ administrator can create any number of Easy Scan terminal actions for scanning to OCR. They can either create one Easy Scan action for each output or let the scanning user select the format themselves.

To enable users to scan to a specific profile, select the profile (such as ocrpdf or ocrtxt) among the values of the Format parameter of the Easy Scan action

Parameter

Title: Format

Type: Code List

Code List: Format

Default value: Default

Required: ☐

Prohibit change of value: ☐

Advanced

Reference: OCRTXT

PDF

JPEG

TIFF

XPS

HCPDF

Default

OCRTXT

OCRPDF

OCRPDFA

Fields marked by * are mandatory.

You can also enable users to select the profile themselves. For more information about how to set up the Easy Scan action on a MyQ Embedded terminal, see the “Easy Scan to OCR” section in the embedded terminal’s manual.

OCR Processing

The OCR software should listen to the document sub-folders of the in folder (in\OCRPDF, in\OCRTXT,...), process the file sent there, save the converted document to the out folder, and delete the source file from the in*** folder.

MyQ listens to the out folder, sends the converted file to the predefined destination (receiver email or email/folder defined on the Destinations tab), and deletes it from the folder.

The file sent to the out folder by the OCR software must have the same name as the source file in the in*** folder. If the name of the converted file differs from the source file, it is deleted without being sent to the user.

Update and Uninstallation

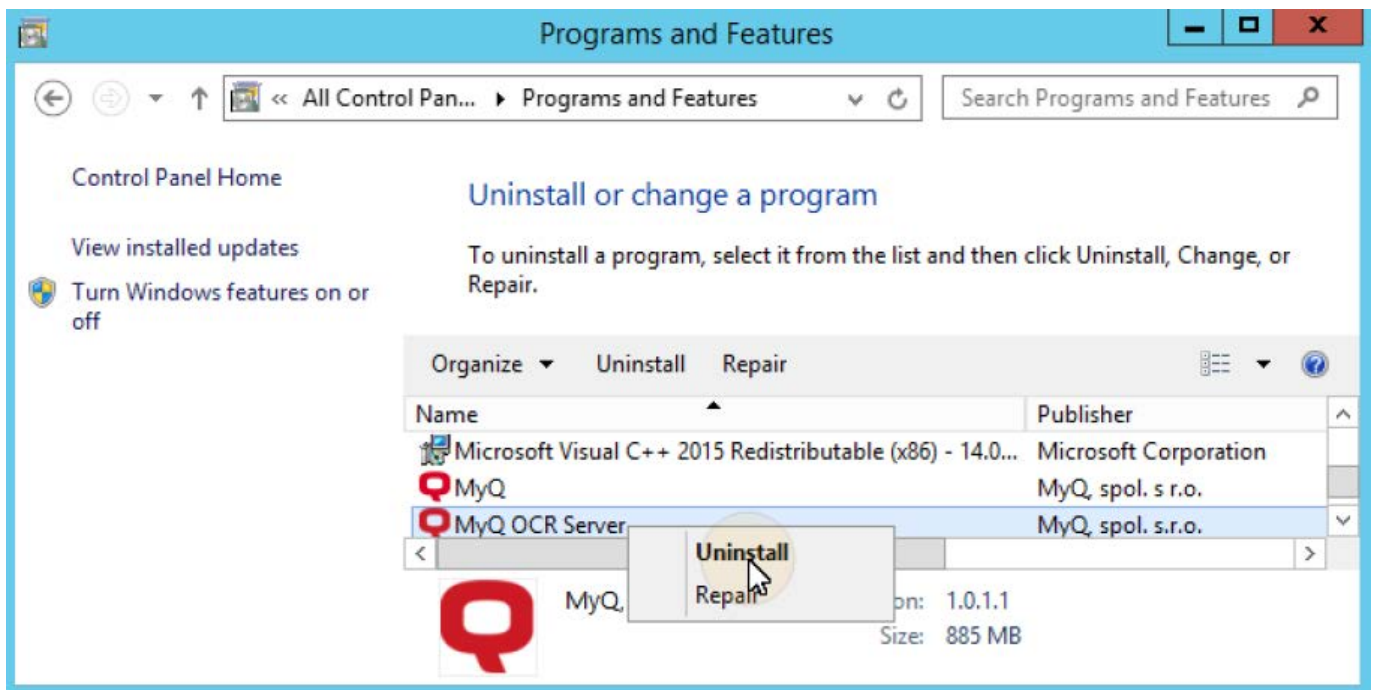
Updating the MyQ OCR Server

Download and run the latest available version of the MyQ OCR Server from the MyQ Community portal. The update process in the update wizard is identical to the MyQ OCR Server installation.

Uninstalling the MyQ OCR Server

The MyQ OCR Server can be uninstalled via the Windows Control Panel.


Go to Control Panel > Programs and Features, find and select the MyQ OCR Server application on the list, and click Uninstall on the ribbon (or right-click and select Uninstall).



Business Contacts

| | |
|-----------------------------|--|
| MyQ® Manufacturer | <p>MyQ® spol. s r.o.</p> <p>Harfa Office Park, Ceskomoravska 2420/15, 190 93 Prague 9, Czech Republic</p> <p>MyQ® Company is registered in the Companies register at the Municipal Court in Prague, division C, no. 29842</p> |
| Business information | www.myq-solution.com info@myq-solution.com |
| Technical support | support@myq-solution.com |
| Notice | <p>MANUFACTURER WILL NOT BE LIABLE FOR ANY LOSS OR DAMAGE CAUSED BY INSTALLATION OR OPERATION OF THE SOFTWARE AND HARDWARE PARTS OF THE MyQ® PRINTING SOLUTION.</p> <p>This manual, its content, design and structure are protected by copyright. Copying or other reproduction of all or part of this guide, or any copyrightable subject matter without the prior written consent of MyQ® Company is prohibited and can be punishable.</p> <p>MyQ® is not responsible for the content of this manual, particularly regarding its integrity, currency and commercial occupancy. All the material published here is exclusively of informative character.</p> <p>This manual is subject to change without notification. MyQ® Company is not obliged to make these changes periodically nor announce them, and is not responsible for currently published information to be compatible with the latest version of the MyQ® printing solution.</p> |
| Trademarks | <p>MyQ®, including its logos, is a registered trademark of MyQ® company. Microsoft Windows, Windows NT and Windows Server are registered trademarks of Microsoft Corporation. All other brands and product names might be registered trademarks or trademarks of their respective companies.</p> <p>Any use of trademarks of MyQ® including its logos without the prior written consent of MyQ® Company is prohibited. The trademark and product name is protected by MyQ® Company and/or its local affiliates.</p> |

Documents / Resources

| | |
|---|--|
|  | <p>myQX 3.0 MyQ OCR Server [pdf] User Guide</p> <p>3.0, 3.0 MyQ OCR Server, MyQ OCR Server, OCR Server, Server</p> |
|---|--|

References

-  [solution.com is for sale | www.oxley.com](http://www.oxley.com)
-  [MyQ Print Management Solution | Security | Productivity | Efficiency](#)

-  [MyQ Print Management Solution](#) | [Security](#) | [Productivity](#) | [Efficiency](#)

Manuals+.