

MyQ 10.2 RC 6 Print Server Installation Guide

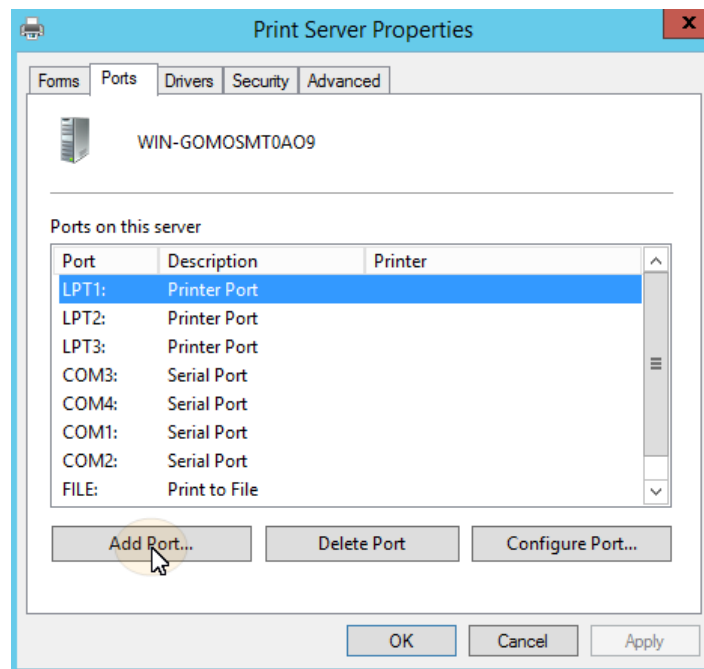
[Home](#) » [myQ](#) » MyQ 10.2 RC 6 Print Server Installation Guide 

Contents

- 1 [MyQ 10.2 RC 6 Print Server](#)
- 2 [10.2 RC 6](#)
 - 2.1 [Changes](#)
 - 2.2 [Bug Fixes](#)
- 3 [10.2 RC 5](#)
- 4 [10.2 RC 4](#)
- 5 [10.2 RC 3](#)
- 6 [10.2 RC 2](#)
- 7 [10.2 BETA 2](#)
- 8 [10.2 BETA](#)
- 9 [Component Versions](#)
- 10 [Documents / Resources](#)
 - 10.1 [References](#)
- 11 [Related Posts](#)



MyQ 10.2 RC 6 Print Server



MyQ Print Server 10.2

Specifications

- Version: 10.2
- Release Date: 3 December, 2023

Product Information

The MyQ Print Server 10.2 is a software application that allows users to connect and manage printers on a network. It provides a centralized platform for monitoring printer status, managing print jobs, and configuring printer settings. The MyQ Print Server 10.2 is compatible with a wide range of printers and supports various operating systems.

Improvements

- Security enhancements
- Performance improvements
- User interface updates

Changes

- Updated printer compatibility list
- Improved error handling
- Enhanced reporting capabilities

Bug Fixes

- Resolved issues related to print job queues
- Fixed bugs causing software crashes

- Addressed connectivity problems with certain printer models

Usage Instructions

Installation

1. Download the MyQ Print Server 10.2 installation file from the official website.
2. Run the installation file and follow the on-screen instructions to complete the installation process.
3. Once the installation is complete, launch the MyQ Print Server application.

Connecting Printers

To connect printers to the MyQ Print Server 10.2, follow these steps:

1. Ensure that the printers are connected to the network and powered on.
2. In the MyQ Print Server application, navigate to the “Printer Management” section.
3. Click on the “Add Printer” button.
4. Select the desired printer from the list of available printers.
5. Follow the on-screen instructions to complete the printer setup process.

Managing Print Jobs

To manage print jobs using the MyQ Print Server 10.2, follow these steps:

1. In the MyQ Print Server application, go to the “Print Job Management” section.
2. View the list of active print jobs and their status.
3. To cancel a print job, select it from the list and click on the “Cancel” button.
4. To prioritize print jobs, use the drag-and-drop feature to rearrange the order.

Configuring Printer Settings

To configure printer settings using the MyQ Print Server 10.2, follow these steps:

1. In the MyQ Print Server application, navigate to the “Printer Settings” section.
2. Select the desired printer from the list of connected printers.
3. Modify the printer settings according to your requirements.
4. Click on the “Apply” button to save the changes.

FAQ

Q: Can I use the MyQ Print Server 10.2 with any printer?

A: The MyQ Print Server 10.2 is compatible with a wide range of printers. However, it is recommended to check the official compatibility list to ensure that your printer model is supported.

Q: How can I update the MyQ Print Server software?

A: To update the MyQ Print Server software, visit the official website and download the latest version. Follow the

installation instructions to upgrade your software.

Q: Is the MyQ Print Server 10.2 compatible with Mac and Windows operating systems?

A: Yes, the MyQ Print Server 10.2 is compatible with both Mac and Windows operating systems. Make sure to download the appropriate version for your system.

MyQ Print Server 10.2

- Minimum required support date: 1st of April 2023
- Minimum required version for upgrade: 8.2

10.2 RC 6

3 December, 2023

Improvements

NEW FEATURE: In addition to permanent PINs, you can now create temporary PINs with limited validity.

NEW FEATURE: Desktop Client can now be configured from the Web Admin Interface and multiple configuration profiles can be created, allowing more flexibility in MDC deployments.

LIMITATION: MDC 10.2 required.

New permission Delete Cards added, allowing you to give users or user groups the option to be able to delete ID cards without them having access to other user management features.

Added possibility to login into other account using Microsoft SSO than the one currently signed in (in previous versions, if user was logged to one MS account, this account was always used).

Improved support of native Epson driver ESC/Page-Color which allows such jobs to be correctly accounted.

Added option to assign a payment account/cost center via Job Processing > PHP scripting in Queue Settings.

For a direct queue, it's now possible to change the "user detection method" from the default "MyQ desktop client" when the MDC option "Ask for payment account" is enabled.

List of characters allowed to be used in project code expanded. **LIMITATION :** Upgrade of Central Server to 10.1 (patch 4) and 10.2 RC 3 is required beforehand for replications to work correctly.

Added additional options for User synchronization from Microsoft Entra ID (ignore sync source, deactivate missing users, add new users).

Connecting cloud storage dialogues were improved and simplified.

Improved design of connect folder/cloud storage screens.

Added support for PJP command @PJP SET FITTOPAGESIZE (to set paper format) for PDF direct print on Ricoh devices.

Changed "Azure AD" to "Microsoft Entra ID" to correspond with MS naming.

Administrators can create multiple Entra ID instances to synchronize and authenticate users towards more than one tenant.

Traefik updated to version 2.10.5.

OpenSSL updated to version 3.1.4.

Apache updated to version 2.4.58.

Changes

- Locked parameters of Easy scan renamed from "Prevent changing the value" to "Read Only".
- License is removed when restoring settings from backup.

Bug Fixes

- Maximum OUT delta exceeded warning can appear repeatedly.
- Possible to use expired certificate for data encryption.
- Parameters in Microsoft Entra ID user synchronization changed and became invalid after upgrade from previous RC version causing synchronization to fail.
- License missing warning is shown during upgrade even when license is present.
- Error while communicating with the server was displayed after cloud storage is connected despite storage being connected successfully.
- LDAP Codebook: Search only matches items that begin with the query, when it should be a full-text search.
- Not possible to print from Easy Print terminal action if user does not have right for project "no project".
- Possible to add User's scan storage path longer than max allowed number of characters which is causing a Web Server Error.
- Not possible to remove a job from favorites with projects disabled, when the job was previously added to favorite with projects enabled.
- Creating project name starting with "&" causes Web Server Error.
- Price for A3 print/copy jobs may be incorrect in reports marked as beta.
- Easy Scan parameter "Microsoft Exchange Address Book" is not possible to configure.
- The "Help" widget on the dashboard does not display the custom title specified in the settings.
- Searching a codebook on the embedded terminal does not work for the query "0". Nothing will be returned.
- User groups imported from CSV are automatically set as Cost Center for users when Cost Center accounting mode is selected.
- External account payment provider HTTP client does not use Proxy settings.
- Report "Credit and quota – Quota status for user" takes too long to generate in some cases.
- Upgrade of terminal package does not remove pkg. file of previous version of terminal from Program Data folder.

10.2 RC 5

10 November, 2023

Security

- Hashing of PINs enhanced. LIMITATION : As a result of changes, users who authenticate towards an LDAP authentication server must use their LDAP password on the Web User Interface, use of PIN is not possible (their PIN will still work from Embedded Terminals, and Desktop Client). Users who authenticate towards MyQ can still use their PIN everywhere.

Improvements:

- Added new setting to allow stringing settings.
- Enabled switch moved to setting header.

Bug Fixes

- User with rights to edit Scheduled report cannot select other attachment file format than PDF.
- Inactivity for some time on Web UI can lead to Web Server Error requiring user to refresh page and log in again.
- Adding “SDK/Platform” column on Printers tab can cause Web Server Error in some cases.
- Jobs via Web UI are printed always in mono when Job Parser is set to Basic.
- Dropdown list for tools and actions cannot be opened on deleted users.

10.2 RC 4

3 November, 2023

Security

Hashing of passwords enhanced. LIMITATION : As a result of changes, users who authenticate towards an LDAP authentication server must use their LDAP password on the Web User Interface, use of PIN is not possible (their PIN will still work from Embedded Terminals, and Desktop Client).

Users who authenticate towards MyQ can still use their PIN everywhere.

Improvements

- NEW FEATURE : Users can save passwords in MyQ Web User Interface used to access secured shared folders they have available as destinations for Easy Scan, instead of providing them manually on the Embedded Terminal during each scan. When no password is saved at the time of scan, the user receives an email to connect the folder to have the scan delivered. Applicable to Easy Scan destination Folder and User's storage with Connect as: User doing the scan.
- NEW FEATURE : Ukrainian was added as a new supported language on MyQ Print Server.
- Option to automatically delete favorite jobs older than a specified amount of time was added.
- Users using Azure AD as their authentication server can authenticate with their Microsoft credentials on the Embedded Terminals (in case they use User Principal Name as their username in MyQ).
- Users who have available OneDrive Business or SharePoint destinations now can browse their entire storage when using Easy Print and Easy Scan, allowing them to select/enter any file/folder they have access to. If Folder browsing is disabled on this destination, scanned files are saved in the root folder of the storage.
- Possible to use variable %userID% for prologue/epilogue and custom PDL.
- Optimizations of Azure AD synchronization via Microsoft Graph API connector that should prevent slowdowns and skipping users.
- Added a link to Online Docs on the Terminal Actions settings page.
- PHP updated to 8.2.12.
- CURL upgraded to 8.4.0.

Changes

- In newly created user synchronization sources using the Azure AD connector (Microsoft Graph), the User Principal Name is now used as the username. After upgrade, existing username settings are preserved. To transition from old attributes to User Principal
- Name, users should be synchronized, the synchronization source removed, and created again. Users are also always paired by Azure AD's unique Object ID.

Bug Fixes

- In some cases, MyQ Print Server can become inaccessible, resulting in Server Error when accessing the MyQ Web Interface and failing communication between Server and Embedded Terminals.
- Deleted printers are shown in Reports.
- Filter for printer group in Environmental – Printers report does not correctly filter printers to be included in the report.
- Duplex option does not work when printing from Linux with some drivers.
- Not possible to use advanced processing features (like watermarks) on some PDF jobs.
- Credit statement is not visible in the main menu after enabling credit until the page is refreshed manually.
- When closing tab of edited report without saving, Save Dialog window doesn't close after first attempt.
- User synchronization results page is not refreshed automatically when synchronization finishes.
- Missing Chinese languages in Easy Config language selection.
- Credit actions drop-down menu options on Users tab is incorrectly aligned (cut off).

Device certification

- Added support for Ricoh IM C8000.
- Added support of embedded terminal for Sharp Luna devices.
- Added support for Sharp BP-70M31/36/45/55/65.

10.2 RC 3

6 October, 2023

Improvements

- **NEW FEATURE** Users can now manage their own Address Books with Email addresses and Fax numbers. They can select these personal contacts as Scan and Fax recipients on the Embedded Terminal if the terminal action uses the Address Book parameter and destination.
- **NEW FEATURE** When a user scans to a cloud storage they do not have connected, they will receive an email with a quick link to connect their storage immediately, and their scan is then delivered. Scan is no longer disposed. This improves the experience of setting the user's cloud storage.
- **NEW FEATURE** Added support for native Epson driver ESC/Page-Color which allows such jobs to be authorized and printed.
- OpenSSL updated to version 3.1.3.
- Firebird update to version 3.0.11.
- Traefik updated to version 2.10.4.
- PHP updated to version 8.2.11.
- Built-in Groups (All users, Managers, Unclassified) are moved to new hidden group "built-in" to avoid conflicts with groups with same name created by user synchronization.
- PjL detection settings on Queue were enhanced, allowing to set how to detect the job owner's domain, including regular expression transformation.
- When a user is signing into an external REST API application via MyQ login, and the user is currently signed in

to MyQ, they can select the current account or switch to another one.

- Prologue/Epilogue can be inserted at the beginning and end of the print file.
- HTTPS is used for external links from the Web Interface.

Changes

- Removed obsolete ciphers from SNMP v3 settings (DES, IDEA and 3DES).

Bug Fixes

- In some cases, not all users are synchronized from Azure AD via Microsoft Graph (added in Connections).
- Built-in Embedded Terminal themes are missing except for the default one.
- Credit statement in CSV cannot be downloaded.
- User cannot change own profile properties (when enabled) on Site server.
- “Operation failed” error is sometimes shown when user is connecting Google Drive storage.
- HW terminal TerminalPro does not work without certificate even when unsecure connection is allowed.
- In Job privacy mode, user running a report is excluded when Exclude filter is not used.
- New user is not registered after a card swipe with “Register a new user by swiping an unknown ID card” enabled.
- Some groups reports cannot be saved when only Accounting group filter is set with error “User may not be empty”.
- Users could lose some Cost Center assignments after user synchronization from Azure AD and LDAP.
- Job preview of invalid job could cause Embedded Terminal to freeze.
- Installation of Kyocera embedded terminal sets device SMTP with no security.
- Two groups with identical names are indistinguishable in reports.
- In Job privacy mode, Administrators and users with Manage reports rights can see only their own data in all reports, resulting in the inability to generate organization-wide reports for group accounting, projects, printers, and maintenance data.
- Print of specific PDF via Web upload could cause Print Server service to crash.
- Synchronized users who are members of groups with identical names to MyQ built-in groups in the source, are wrongly assigned to these built-in groups due to conflicting names.
- Update interval for Offline login user synchronization is not applied.
- %DDI% parameter in .ini file does not work in MyQ DDI standalone version.
- Printers filter of nested Terminal Actions are not inherited from folder’s filter for Printers.
- In rare cases, Web Server Error could be displayed to a user after login due to multiple memberships in the same group.
- The server could crash during a continuous high-level print load.

Device Certification

- Added support for Olivetti models – d-COPIA 5524MF, d-COPIA 4524MF plus, d-COPIA 4523MF plus, d-COPIA 4524MF, d-COPIA 4523MF, PG L2755, PG L2750, PG L2745.
- Added support for Kyocera TASKalfa M30032 and M30040.
- Added support for Brother MFC-8510DN.

- Added support for Brother MFC-9140CDN.
- Added support for Brother MFC-B7710DN.
- Added support for Brother MFC-L2740DW.
- Added support for Brother DCP-L3550CDW.
- Added support for Brother MFC-L3730CDN.
- Added support for HP Color LaserJet MFP X57945 and X58045.
- Added support for HP LaserJet Flow E826x0.
- Added support for HP LaserJet M610.
- Added support for Sharp BP-50M26/31/36/45/55/65.
- Added support for Lexmark XC9445.
- Added support for Lexmark XC4342.
- Added support for Canon iPR C270.
- Corrected counter reading of Epson M15180.
- Corrected print counters of HP LaserJet Pro M404.

10.2 RC 2

16 August, 2023

Improvements

- Added option to synchronize “onPremisesSamAccountName” and “onPremisesDomainName” from Azure AD via MS Graph and pairing by Object ID to allow updating existing users whose usernames changed.
- Added option to exclude specific user(s) from Reports.
- MAKO updated to version 7.0.0.
- Added option to define regular expression for user synchronization (LDAP and Azure AD) for Aliases, Cards, PINs and Personal numbers.
- Failed jobs in jobs folder are deleted after 7 days (by default) during System maintenance to prevent them from taking up storage.

Changes

- PHP version downgraded to 8.2.6. PHP was crashing in some cases.

Bug Fixes

- Not possible to edit user on Site Server.
- Easy Fax appears as a destination of Easy Scan panel operation.
- User synchronization could result with errors if the source contained invalid values.
- Parsing of some PDF files fails because of unknown font.
- HP finishing options not correctly applied in some cases.
- In specific cases, zero counter can be read from HP Pro device, leading to negative counters accounted to *unauthenticated user.
- User synchronization takes more time than in previous MyQ versions.

- License plan of License widget contains label “EDITION”.
- LDAP user synchronization page is not responding in Firefox browser.

Device Certification

- Corrected toner reading values of Epson WF-C879R.
- Added support for Sharp Luna devices.
- Added support for Ricoh Pro 83x0
- 10.2 RC 1
- 27 July, 2023

Improvements

- Users now do not need to retype the authorization code manually when connecting a new cloud storage. Same for Gmail connection created by administrators.
- Added unique session identifiers to replication data to prevent differences in accounting data between Sites and Central.
- PHP upgraded to version 8.2.8.
- Improved look of new HTML emails. Footer text in emails now can be translated.
- Added options for behavior of PINs and Cards synchronization from LDAP same way as in CSV synchronization.
- API Added option to execute reports over REST API for external integrations.

Bug Fixes

- When user deletes all their own ID Cards on Site Server, it is not propagated to Central Server.
- User interaction script can not be saved.
- Some Project reports are available with Job privacy enabled.
- Some documents are parsed and showing as B&W on Terminal but are printed and accounted as color.
- Site Server's print service crashes when Job roaming jobs are requested for deleted user.
- Scanning to OneDrive Business – insufficient user consents.
- Refresh token for Exchange Online expires due to inactivity despite of the system being actively used.
- Page-Range PDF cannot be read by Adobe Reader and causing Ricoh device to restart itself.
- Missing Scan and Fax columns in report Projects – User Session details.
- It is possible to save empty email destination for Log Notifier rules.
- Invalid SMTP port configuration (same port for SMTP and SMTPS) prevents MyQ Server from receiving print jobs.
- In some cases printer cannot be activated with SQL error “Malformed string”.
- Entering an invalid email when editing user account via Terminal Action displays incorrect error message.
- Document with multiple paper sizes (i.e. A3+A4) is printed on only one size (i.e. A4).
- Credit account type is not translated.
- Cloud service name missing in Connect dialogue.
- Punching on Canon's CPCA job is not applied upon release of job.
- Booklet stapled on Ricoh device is stapled on the wrong place in some cases.

Device Certification

- Canon model lines Kodaimurasaki, Tawny, Azuki, Cornflower blue, Gamboge and Ghost white added for embedded terminal support.
- Added support for Toshiba e-STUDIO65/9029A.
- Added support for Ricoh IM C20/25/30/35/45/55/6010 (requires Embedded version 8.2.0.887 RTM).
- Added duplex counter for NRG SP C320.
- Added embedded terminal support for Canon iR-ADV C3922/26/30/35.

10.2 BETA 2

29 June, 2023

Improvements

- NEW FEATURE Possible to set admin username and password for printers via CSV import, allowing the import of these credentials in bulk.
- NEW FEATURE Widget "Updates" was added on the admin's Dashboard. When a new version of MyQ or Terminal patch is released, administrators will see the update as available.
- Printer Status Check now checks also coverage counters, allowing them to be included in reports (for devices where applicable).
- Page range setting on PDF print files is achieved by incremental update instead of PJL command, improving support across devices.
- Added support for newer authentication protocols for SNMP v3 (SHA2-224, SHA2-256, SHA2-384, SHA2-512).
- Health check will warn the administrator if their database is using a page size of 8KB instead of 16KB which may affect the performance. Page size can be increased by backing up and restoring the database.
- Installation via Printer Discovery initiated by the Embedded Terminal is now supported (requires to be also supported by the Embedded Terminal).
- Added support for Romanian language.
- User rights changes are logged to Audit log.
- Web UI accessed over HTTP is redirected to HTTPS (except when accessing localhost) for improved security.
- Propagation of changes between Sites when their settings change on Central improved.
- Certificates in PHP updated.
- PHP updated to v8.2.6.

Changes

- Removed support for GPC file format in Bulk credit recharge.
- Renamed "Local Print Spooling" to "Device Spooling" in Settings (to unify and more easily distinguish different functions).
- Removed Terminal Manager (Terminal Manager was used for older version of terminals which are no longer supported).
- The default runtime of scheduled tasks changed to prevent them from running at the same time.
- Attempt of reading printer's OID which is not available is logged as Debug message instead of Warning.

Bug Fixes

- Delegates of user groups are not synchronized from Central Server.
- Some rows could be skipped during replication on a Site that had active user sessions, causing inconsistencies in reports.

NOTE: Site 10.2 BETA is now incompatible with Central Server 10.2 BETA 2 due to differences in communication during replications. Upgrade of the Site to 10.2 BETA 2 is required.”

- Job files of not replicated jobs to Central Server are never deleted.
- Unclear error message on the Terminal when a user without scan destination uses an Easy Scan action.
- Credit tab in User detail cannot be accessed (Web Server Error).
- Creating LDAP synchronization with unreachable domain causes Web Server Error.
- Not possible to use License manual activation.
- Missing Secure flag in Cookies.
- Sign in with Microsoft does not work in the Mobile Client when the server was added via Application proxy URL.
- Emails viewed in Outlook are missing line breaks and other small fixes.

Device Certification

- Added support for Ricoh M C251FW.
- Added support for Canon iR-ADV 6855.
- Added support for Canon iR-ADV C255 and C355.
- Added support for Ricoh P C600.
- Added support for Ricoh P 800.
- Added support for OKI B840, C650, C844.
- Added support for Sharp MX-8090N and terminal 8.0+ support for MX-7090N.
- Corrected copy, simplex and duplex counters of HP M428.
- Added support for Brother DCP-L8410CDW.
- Added support for Canon MF832C.

10.2 BETA

31 May, 2023

Security

- The default minimum TLS version has been increased to version 1.2.

Improvements

- NEW FEATURE Option in Easy Config to import only settings from the Database backup file lets administrators to use one server as a template for deploying multiple servers.
- NEW FEATURE Print Server now collects more information about connected devices such as Embedded SDK

version and platform. Details can be optionally displayed on the Printers page in the MyQ Web Interface. NOTE : Must also be supported by the

- Embedded Terminals.
- NEW FEATURE New user's attribute "Alternate email" allows the administrator to add multiple email addresses to a user. If enabled by the administrator, users can submit jobs from these emails and use them as a scan destination.
- NEW FEATURE New connector "External Storage API" can be used to connect an API adapter.
- This way, new scan destinations not natively supported by MyQ can be integrated.
- NEW FEATURE Administrators can now automatically connect users synchronized from Azure AD to their OneDrive storage if they set up an Azure application with sufficient permissions as per documentation. Users will not have to individually log in to the
- MyQ Web User Interface to connect their OneDrive account.
- Traefik updated to version 2.10.
- OpenSSL updated to version 3.1.0.
- PHP updated to version 8.2.5.
- Apache updated to version 2.4.57.
- Possible to use original print properties (job properties "Do not change") of the job for Easy Print.
- Outgoing emails sent to MyQ users, e.g. emails with scanned documents, have been redesigned to look better than before.
- Design of the login page users can see when logging in MyQ Desktop Client and MyQ X Mobile Client is improved. NOTE : Applies if the client application supports the new login experience (currently MyQ X Mobile Client 10.1 and higher)
- Added support for accounting of IPP jobs on Epson with embedded terminal. Jobs were accounted to *unauthenticated user.
- LPR server is now able to receive jobs with unknown sizes. This means that spooling a job to MyQ via a Windows driver should no longer require LPR Byte Counting enabled.
- Purchased Assurance Plan is displayed on the Dashboard of the MyQ Web Interface.
- Job Preview is now generated in higher image quality.
- Canon CPCA jobs support watermarks and orientation.
- Support for release parameter "Page range" was added, allowing Terminals supporting this parameter to show selection of pages of the document to be printed.
- Possible to synchronize user's multiple email addresses. Attributes for email address needs to be separated by semicolon and all next email addresses are imported as alternate email address.
- Saved OneDrive Business connector can be edited or re-authorized from the context menu, allowing to change application credentials without deleting and creating a new connector.
- New "Automatic" way of setting up an OneDrive Business connector introduced. It does not require creating an Azure application manually. Instead, MyQ's preconfigured application can be added on the tenant. Users are automatically connected to their
- OneDrive storage, meaning they do not have to do so manually in the MyQ Web User Interface.
- Minimum TLS version configured for MyQ communication is visible on the Network page in Settings.
- Newly added option to enable Delete a file for Easy Print and Easy Scan cloud storages. NOTE : Must be supported by the cloud storage type, currently available for External Storage destinations.
- If you modify settings in the MyQ Web Interface and forget to save them, MyQ will now remind you about that.

Changes

- TERMINALS Removed support for all remaining Embedded Terminals version 7. If you are affected by this change, upgrade the installed Terminals to, at least, version 8.
- Minimal supported version of Windows Server is 2016.
- Following features were deprecated: SQL Server as user synchronization source, custom user synchronization source, schedulable external commands via Task Scheduler, editable username during self-registration, and SQL filtering for reports.
- Removed support for API v1. Use at least API v2 in your integrations with MyQ.
- Removed support of old terminal packages using API v1.
- Removed “Recharge Credit (on a terminal attached to a printer)” credit recharge option.
- Removed Custom data processing from Queue settings.
- Removed support for license keys. Not possible to upgrade to 10.2 when license keys are being used.
- Removed SW Lock via SNMP.
- Removed secondary terminal.
- Removed credit account type “Managed by the printer”. Note that after upgrade, all existing credit accounts of this type will be deleted.
- Removed the possibility to set Custom destination with PHP processing.
- Removed “MyQ SMTP Server” option for receiving jobs via Email. Jobs can still be received from external mailboxes connected to MyQ in Settings – Network – Connections.
- User’s email address is handled as a unique parameter (two or more users can no longer have the same email address).
- Replaced UDP communication for MDC with WebSockets (Requires MDC 10.2).
- User’s scan storage now does not accept email addresses, only valid storage paths.

Bug Fixes

- Aliases are incorrectly escaped in exported users CSV file.
- Some internal tasks (which take less than a few seconds) can be executed twice instead of only once.

Device Certification

- Added support for Epson WF-C529RBAM.
- Added support for Konica Minolta Bizhub 367.
- Added support for Sharp BP-70M75/90.
- Added simplex/duplex counters for Ricoh SP C840.
- Added support for Sharp MX-C407 and MX-C507.
- Added support for Brother MFC-L2710dn.
- Added support for Canon iR C3125.

Component Versions

Expand the content to see the version list of used components for the above MyQ Print server releases.


	Apache	Apache SSL	Server SSL	Firebird	PHP	PHP SSL	C++ Runtimes	Target	MAKO
--	--------	------------	------------	----------	-----	---------	--------------	--------	------

MyQ Print Server 10.2 RC 6	2.4.58	3.1.3	3.1.4	WI- V3.0.11 .33703	8.2.12	3.0.11	VC++ 2015-2022 (vc17) – 14.32.313 26.0	2.10.5	7.0.3.199 _x64
MyQ Print Server 10.2 RC 5	2.4.57	3.1.0	3.1.3	WI- V3.0.11 .33703	8.2.12	3.0.11	VC++ 2015-2022 (vc17) – 14.32.313 26.0	2.10.4	7.0.0.192 _x64
MyQ Print Server 10.2 RC 4	2.4.57	3.1.0	3.1.3	WI- V3.0.11 .33703	8.2.12	3.0.11	VC++ 2015-2022 (vc17) – 14.32.313 26.0	2.10.4	7.0.0.192 _x64
MyQ Print Server 10.2 RC 3	2.4.57	3.1.0	3.1.3	WI- V3.0.11 .33703	8.2.111	3.0.8	VC++ 2015-2022 (vc17) – 14.32.313 26.0	2.10.4	7.0.0.192 _x64
MyQ Print Server 10.2 RC 2	2.4.57	3.1.0	3.1.0	WI- V3.0.8.33535	8.2.6	3.0.8	VC++ 2015-2022 (vc17) – 14.32.313 26.0	2.9.8	7.0.0.192 _x64

MyQ Print Server 10.2 RC 1	2.4. 57	3.1.0	3.1.0	WI- V3.0. 8. 33535	8. 2. 8	3.0 .8	VC++ 2015- 202 2 (vc17) – 14.32.313 26.0	2. 9. 8	6.6.3 .124 _x64
MyQ Print Server 10.2 BETA 2	2.4. 57	3.1.0	3.1.0	WI- V3.0. 8. 33535	8. 2. 6	3.0 .8	VC++ 2015- 202 2 (vc17) – 14.32.313 26.0	2. 9. 8	6.6.3 .124 _x64

MyQ Print Server 10.2 BETA	2.4. 57	3.1.0	3.1.0	WI- V3.0. 8. 33535	8. 2. 5	3.0 .8	VC++ 2015- 202 2 (vc17) – 14.32.313 26.0	2. 1 0. 1	6.6.3 .124 _x64
----------------------------	------------	-------	-------	-----------------------	---------------	-----------	---	--------------------	-----------------------

Documents / Resources

	MyQ 10.2 RC 6 Print Server [pdf] Installation Guide 10.2 RC 6 Print Server, 10.2 RC 6, Print Server, Server
---	--

References

- [User Manual](#)