



MYNT3D Professional Printing 3D Pen with OLED Display User Guide

[Home](#) » [MYNT3D](#) » MYNT3D Professional Printing 3D Pen with OLED Display User Guide 

Contents

- [1 MYNT3D Professional Printing 3D Pen with OLED Display User Guide](#)
- [2 Documents / Resources](#)
 - [2.1 References](#)

MYNT3D Professional Printing 3D Pen with OLED Display User Guide



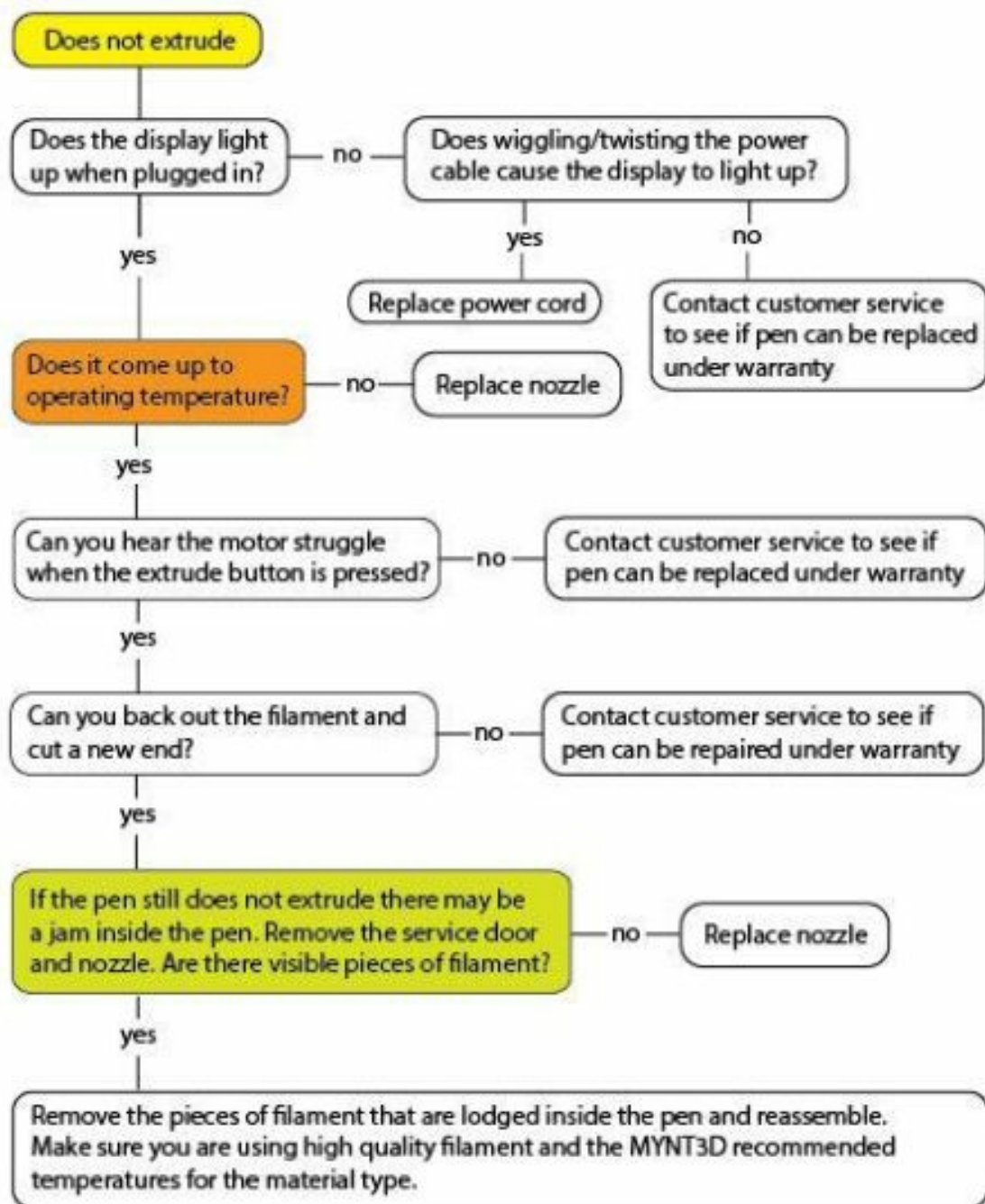
Troubleshooting:

My pen won't heat up.

- Make sure you are pressing the feed button to begin heating.
- Make sure the power cable is connected securely and the display is on.
- If the display does not turn on, try an alternate AC to USB adapter if available.
- If heating mode begins but current temperature does not rise, replace the nozzle.

My pen heats up, but filament does not extrude.

- Try setting the speed control to fast.
- Make sure the feed gear has engaged the filament and it is loading into the pen.
- If filament gets to the nozzle and then the motor struggles or slows down, STOP and unload the filament.
- Try cutting a fresh end on the filament.
- If none of these suggestions help, you can try opening the service door and removing the nozzle to inspect for blockages.



Read More About This Manual & Download PDF:

Documents / Resources

