

**myFirsttech**

myFirsttech FTI-  
CDP1 Vehicle  
Preparation and  
Coverage Notes



# myFirsttech FTI-CDP1 Vehicle Preparation and Coverage Notes Installation Guide

[Home](#) » [myFirsttech](#) » myFirsttech FTI-CDP1 Vehicle Preparation and Coverage Notes Installation Guide 

## Contents

- [1 myFirsttech FTI-CDP1 Vehicle Preparation and Coverage Notes](#)
- [2 Product Usage Instructions](#)
- [3 FTI-CDP1 – DL-CH7 – Type 3](#)
- [4 CARTRIDGE INSTALLATION](#)
- [5 MODULE PROGRAMMING PROCEDURE – WITH KLON – 1 OF 2](#)
- [6 Documents / Resources](#)
  - [6.1 References](#)
- [7 Related Posts](#)

# myFirsttech

**myFirsttech FTI-CDP1 Vehicle Preparation and Coverage Notes**



**Specifications**

- Make: DL-CH7 Chrysler
- Model: 300 PTS
- Year: 2018
- Install Type: 2
- CAN CJB
- Lights: Park / Auto
- Type: A
- IGN BCM

## Product Usage Instructions

### Cartridge Installation

1. Slide the cartridge into the unit, noticing the button under the LED.

### Module Programming Procedure – With KLON

1. Close the driver door.
2. Wait for the LED to turn solid RED.
3. Re-open the driver door to wake up the data bus.
4. Push the start button once to the OFF position.
5. Press UNLOCK on keyfob 1.
6. Wait for the LED to flash BLUE once.
7. Remove the valet key from keyfob 1.
8. Push the start button twice with keyfob 1 to the ON position.
9. If LED flashes BLUE rapidly, proceed to the next step. If LED turns solid RED, repeat steps 8 to 10.
10. Push the start button once to the OFF position.
11. Disconnect all connectors from remote starter except the power connector.

### FAQ

• **Q: What should I do if the LED does not turn solid RED during programming?**

A: If the LED does not turn solid RED, repeat steps 8 to 10 of the Module Programming Procedure with KLON.

• **Q: Can I program multiple keyfobs with this system?**

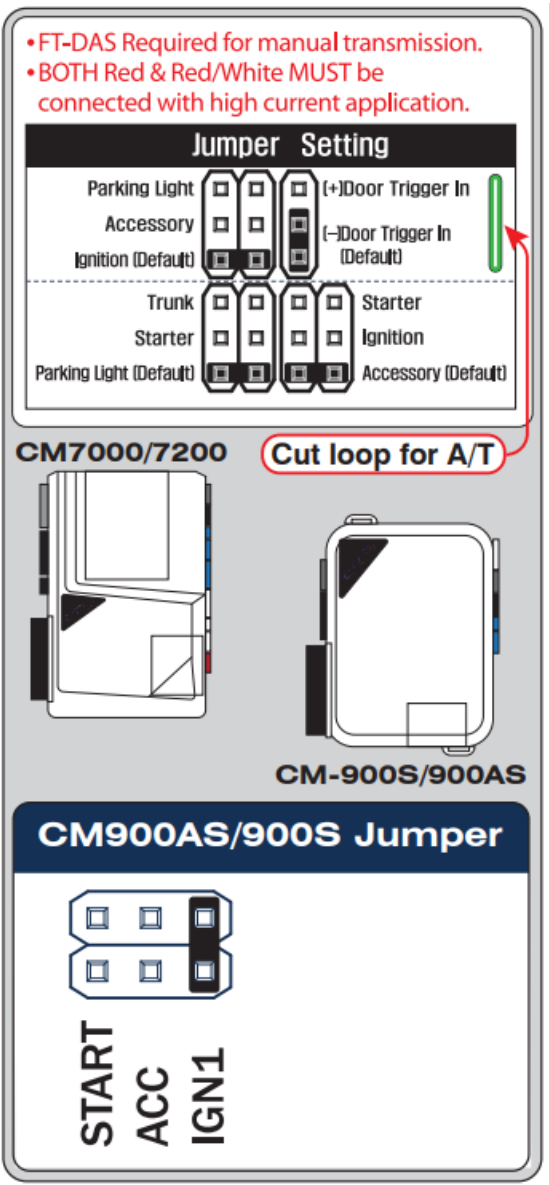
A: Yes, you can program multiple keyfobs by following the Module Programming Procedure steps for each keyfob.

**RSTECH, LLE.**

**SUPPORT** – 1(888) 820-3690, EXT. 203

Make	Model	Year	Install	CAN	Lights	IGN	Hood	I/O Changes
DL-CH7 Chrysler	300 PTS	2018	Type 2	CJB	Park / Auto Type A	BCM	BCM	Green White/Blue

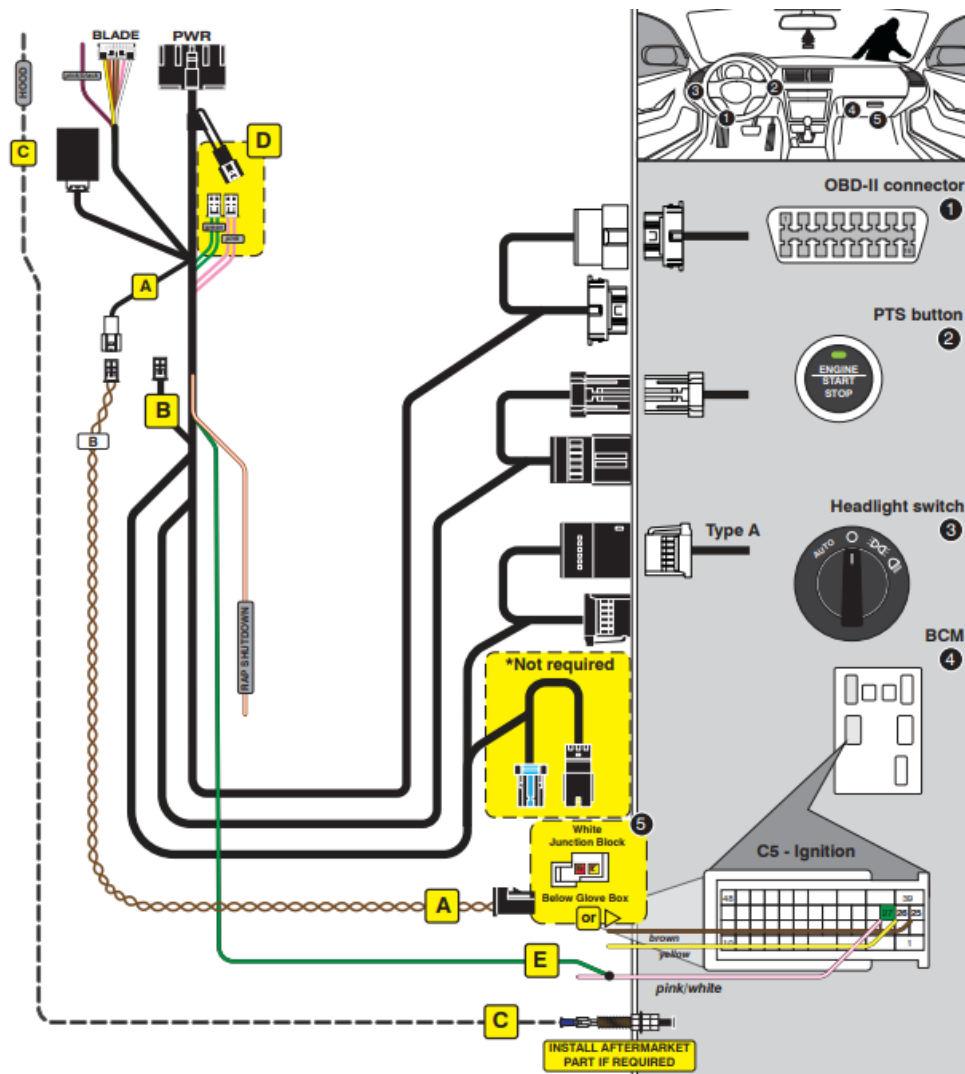
- FT-DAS Required for manual transmission.
- BOTH Red & Red/White MUST be connected with high current application.



FEATURE COVERAGE																	
<input type="checkbox"/>	<input type="checkbox"/>	<input type="checkbox"/>	<input type="checkbox"/>	<input type="checkbox"/>	<input type="checkbox"/>	<input type="checkbox"/>	<input type="checkbox"/>	<input type="checkbox"/>	<input type="checkbox"/>	<input type="checkbox"/>	<input type="checkbox"/>	<input type="checkbox"/>	<input type="checkbox"/>	<input type="checkbox"/>	<input type="checkbox"/>	<input type="checkbox"/>	<input type="checkbox"/>
IMMOBILIZER DATA	PRIORITY UNLOCK	DOOR LOCK	DOOR UNLOCK	ARM OEM ALARM	DISARM OEM ALARM	TRUNK/HATCH RELEASE					DOOR STATUS	TRUNK STATUS	RAP SHUTDOWN	BRAKE STATUS	E-BRAKE STATUS	TACH OUTPUT	
																SECURE TAKEOVER	PARKING LIGHTS

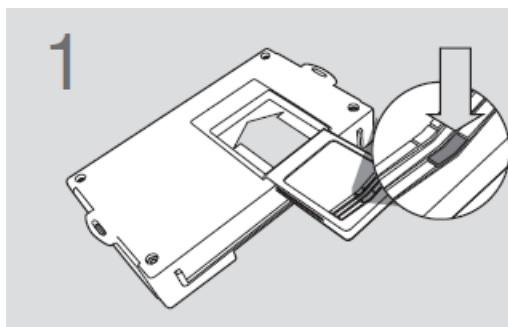
FTI-CDP1 – DL-CH7 – Type 3

2018 Chrysler 300 PTS



## CARTRIDGE INSTALLATION

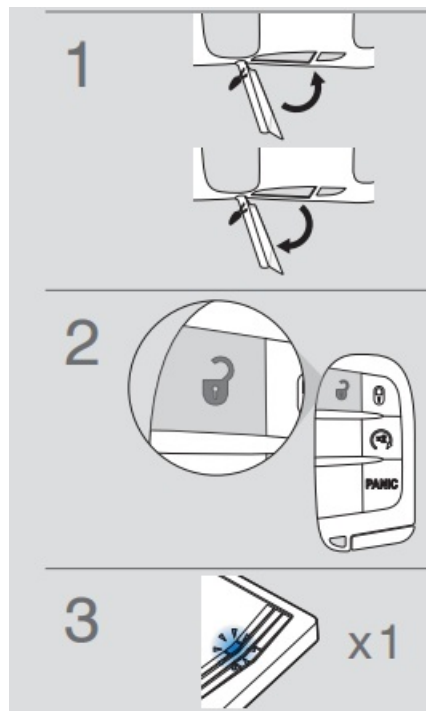
1. Slide cartridge into unit. Notice button under LED.



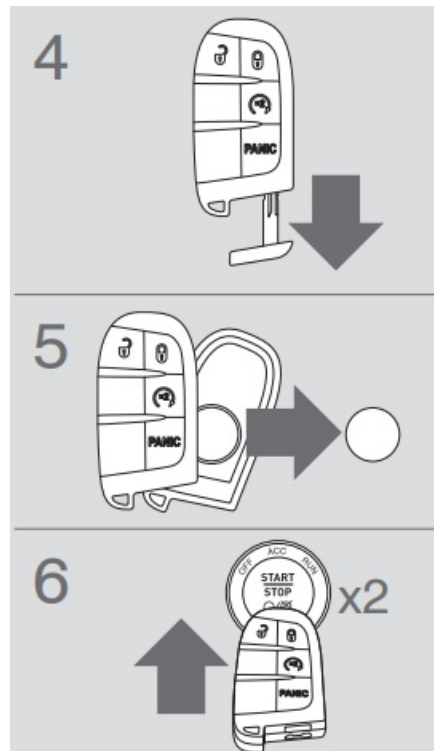
2. Ready for Module Programming Procedure.

## MODULE PROGRAMMING PROCEDURE – WITH KLON – 1 OF 2

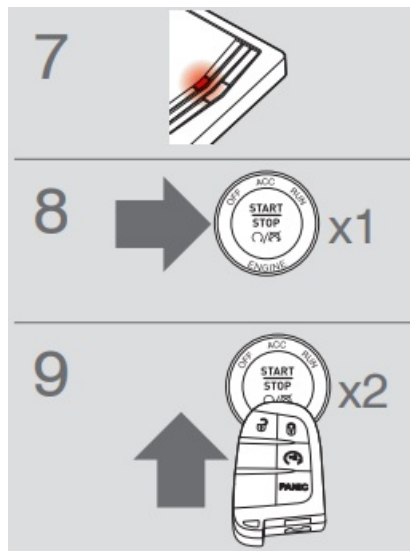
1. Close driver door.
2. Re-open driver door to wake up data bus.  
Press UNLOCK on keyfob 1.
3. Wait, LED will flash BLUE once [1x].



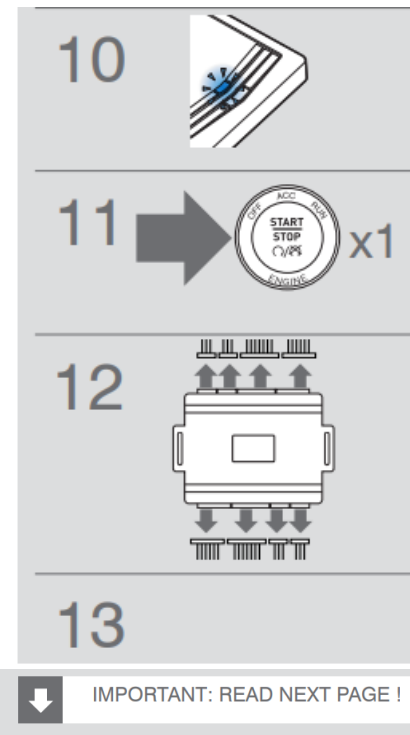
4. Remove valet key from keyfob 1.
5. Remove batteries from keyfob 1.
6. Push start button twice [2x] with keyfob 1 to ON position. (No battery)



7. Wait, LED will turn solid RED.
8. Push start button once [1x] to OFF position.
9. Push start button twice [2x] with keyfob 1 to ON position. (No battery)

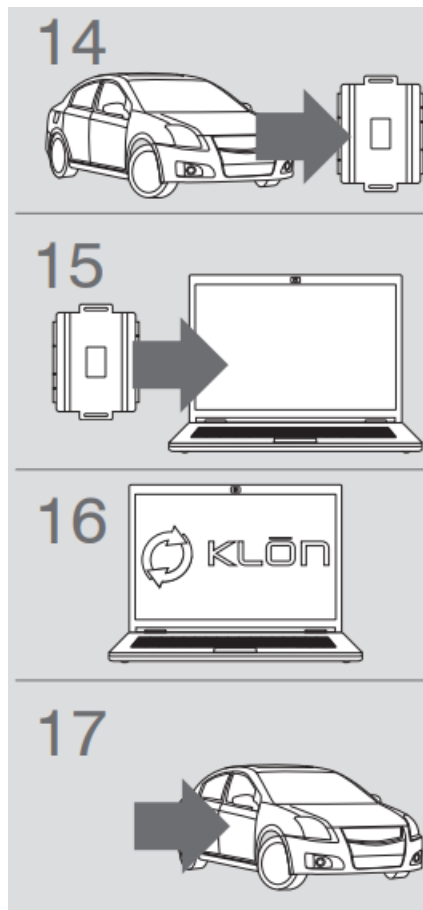


10. Wait, if LED flashes BLUE rapidly, proceed to step 11. If LED turns solid RED, repeat steps 8 to 10.
11. Push start button once [1x] to OFF position.
12. Disconnect all connectors from remote starter except the power connector.
13. Disconnect the power connector.



IMPORTANT: READ NEXT PAGE !

14. Remove remote starter from vehicle.
15. Connect remote starter to computer.
16. Proceed with extended programming.
17. Connect remote starter to vehicle.

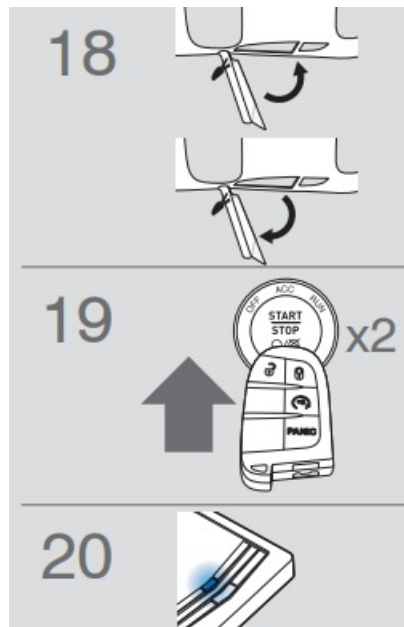


18. Close driver door.

Re-open driver door to wake up data bus.

19. Push start button twice [2x] with keyfob 1 to ON position. (No battery)

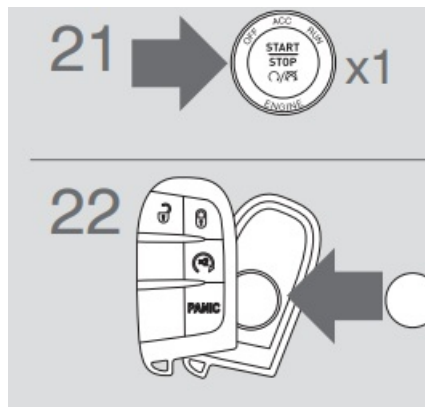
20. Wait, LED will turn solid BLUE for 2 seconds.



21. Push start button once [1x] to OFF position.

22. Module Programming Procedure completed.

Insert battery in keyfob 1.



**WARNING:** READ BEFORE REMNO OTICETE STARTING THE VEHICLE

### IMPORTANT

All OEM keyfobs must be at least 10 feet away from the vehicle. All vehicle doors must be closed and locked prior to remote start sequence. Failure to comply will result in remote starter malfunction.

TAKE OVER PROCEDURE – TO THE VEHICLE OWNER

### NOTE

1. All vehicle doors must be closed and locked prior to remote start sequence.



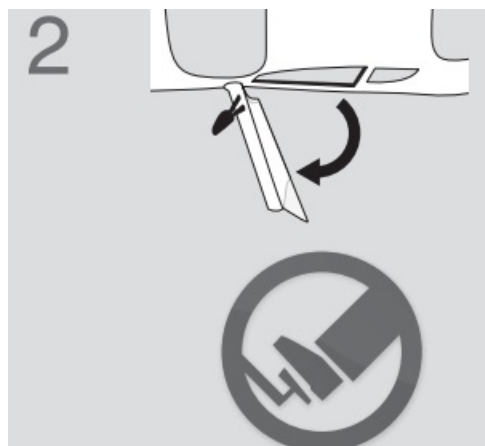
1. Press UNLOCK on after-market remote.



### 2. TIME RESTRICTI N

Within 45 SECONDS from previous step:

- Open vehicle door.
- Enter vehicle.
- Close vehicle door.
- Press and release BRAKE pedal.















Failure to follow procedure within time restriction will result in vehicle engine shutdown.

[WWW.IDATALINK.COM](http://WWW.IDATALINK.COM)

Automotive Data Solutions Inc. © 2020

## Documents / Resources

	<a href="#">myFirsttech FTI-CDP1 Vehicle Preparation and Coverage Notes [pdf]</a> Installation Guide FTI-CDP1 Vehicle Preparation and Coverage Notes, FTI-CDP1, Vehicle Preparation and Coverage Notes, Preparation and Coverage Notes, Coverage Notes, Notes
	<a href="#">myFirsttech FTI-CDP1 Vehicle Preparation and Coverage Notes [pdf]</a> Installation Guide FTI-CDP1-CH7, CM7000-7200, CM900AS-900S, FTI-CDP1 Vehicle Preparation and Coverage Notes, FTI-CDP1, Vehicle Preparation and Coverage Notes, Preparation and Coverage Notes, Coverage Notes, Notes
	<a href="#">myFirsttech FTI-CDP1 Vehicle Preparation and Coverage Notes [pdf]</a> Installation Guide DL-CH7, FTI-CDP1 Vehicle Preparation and Coverage Notes, FTI-CDP1, Vehicle Preparation and Coverage Notes, Preparation and Coverage Notes, Coverage Notes, Notes
	<a href="#">myFirsttech FTI-CDP1 Vehicle Preparation and Coverage Notes [pdf]</a> Installation Guide DL-CH7, CM7000-7200, CM900AS-900S, CM-900, FTI-CDP1 Vehicle Preparation and Coverage Notes, FTI-CDP1, Vehicle Preparation and Coverage Notes, Preparation and Coverage Notes, Coverage Notes, Notes
	<a href="#">myFirsttech FTI-CDP1 Vehicle Preparation and Coverage Notes [pdf]</a> Installation Guide DL-CH7, FTI-CDP1 Vehicle Preparation and Coverage Notes, FTI-CDP1, Vehicle Preparation and Coverage Notes, Preparation and Coverage Notes, Coverage Notes, Notes
	<a href="#">myFirsttech FTI-CDP1 Vehicle Preparation and Coverage Notes [pdf]</a> Installation Guide FTI-CDP1 Vehicle Preparation and Coverage Notes, FTI-CDP1, Vehicle Preparation and Coverage Notes, Preparation and Coverage Notes, Coverage Notes, Notes
	<a href="#">myFirsttech FTI-CDP1 Vehicle Preparation and Coverage Notes [pdf]</a> Installation Guide DL-CH7 RAM 1500 PTS Diesel 18_SPX, FTI-CDP1 Vehicle Preparation and Coverage Notes, FTI-CDP1, Vehicle Preparation and Coverage Notes, Preparation and Coverage Notes, Coverage Notes, Notes

	<p><a href="#">myFirstech FTI-CDP1 Vehicle Preparation and Coverage Notes</a> [pdf] Installation Guide FTI-CDP1 Vehicle Preparation and Coverage Notes, FTI-CDP1, Vehicle Preparation and Coverage Notes, Preparation and Coverage Notes, Coverage Notes, Notes</p>
	<p><a href="#">myFirstech FTI-CDP1 Vehicle Preparation and Coverage Notes</a> [pdf] Installation Guide DL-CH7 RAM 2500 PTS, FTI-CDP1 Vehicle Preparation and Coverage Notes, FTI-CDP1, Vehicle Preparation and Coverage Notes, Preparation and Coverage Notes, Coverage Notes, Notes</p>
	<p><a href="#">myFirstech FTI-CDP1 Vehicle Preparation and Coverage Notes</a> [pdf] Installation Guide DL-CH7 RAM 3500 PTS, FTI-CDP1 Vehicle Preparation and Coverage Notes, FTI-CDP1, Vehicle Preparation and Coverage Notes, Preparation and Coverage Notes, Coverage Notes, Notes</p>

References

- [ⓘ iDatalink - Home](#)
- [User Manual](#)

Manuals+, Privacy Policy

This website is an independent publication and is neither affiliated with nor endorsed by any of the trademark owners. The "Bluetooth®" word mark and logos are registered trademarks owned by Bluetooth SIG, Inc. The "Wi-Fi®" word mark and logos are registered trademarks owned by the Wi-Fi Alliance. Any use of these marks on this website does not imply any affiliation with or endorsement.