


myF**IRSTECH**.com

**DL-CH12 Grand
Caravan PTS**



myFirstech DL-CH12 Grand Caravan PTS Instruction Manual

[Home](#) » [myFirstech](#) » myFirstech DL-CH12 Grand Caravan PTS Instruction Manual 

Contents

- [1 myFirstech DL-CH12 Grand Caravan PTS](#)
- [2 Installation and Configuration Notes](#)
- [3 MODULE PROGRAMMING PROCEDURE – PTS](#)
- [4 TAKE OVER PROCEDURE – PTS – TO THE VEHICLE OWNER](#)
- [5 Product Specifications](#)
- [6 Product Usage Instructions](#)
- [7 Frequently Asked Questions \(FAQ\)](#)
- [8 Documents / Resources](#)
 - [8.1 References](#)
- [9 Related Posts](#)

myF**IRSTECH**.com

myFirstech DL-CH12 Grand Caravan PTS



Vehicle Coverage and Preparation Notes

Make	Model	Year	Install	CAN	Lights	IGN	RAP	I/O Changes
DL-CH12 Chrysler	Grand Caravan PTS	2021-22	Type 1C	F/JC	Park / Auto Type B2	PINK	NO	Green White/Blue N/A

FIRMWARE: This installation requires BLADE-AL(DL)-CH12, flash module, and update the controller firmware before installing.

INSTALLATION

Type 1C vehicles use a CAN extension cable to make connections at the firewall junction connector, located above the driver kick panel and attached to the firewall (CANH, pin #17, tan/white, CANL, pin #18, yellow).

LIGHTS: Type B2 parking lights use the 10-pin connector, but require additional circuit manipulation at the BLADE connector, redirecting the yellow (MUX) output to a 500 Ohm resistor and the controller green/white (–) parking light output.

IGNITION:

Type 1C ignition is available at the junction connector located above the driver kick panel, attached to the firewall, vehicle wire is located at pin #39, pink/lr. green, of the 59-pin connector

Installation and Configuration Notes

- A REQUIRED CONNECTION (CAN extension cable)
- B NOT REQUIRED (Harness CAN)
- C NO CONNECTION
- D REQUIRED CONNECTION (IGN)
- E MODIFICATION REQUIRED (see Lights note above)

- ### Jumper Setting

Parking Light				(+)Door Trigger In	
Accessory				(-)Door Trigger In	
Ignition (Default)				(Default)	
Trunk				Starter	
Starter				Ignition	
Parking Light (Default)				Accessory (Default)	

Cut loop for A/T



CM-900S/900AS

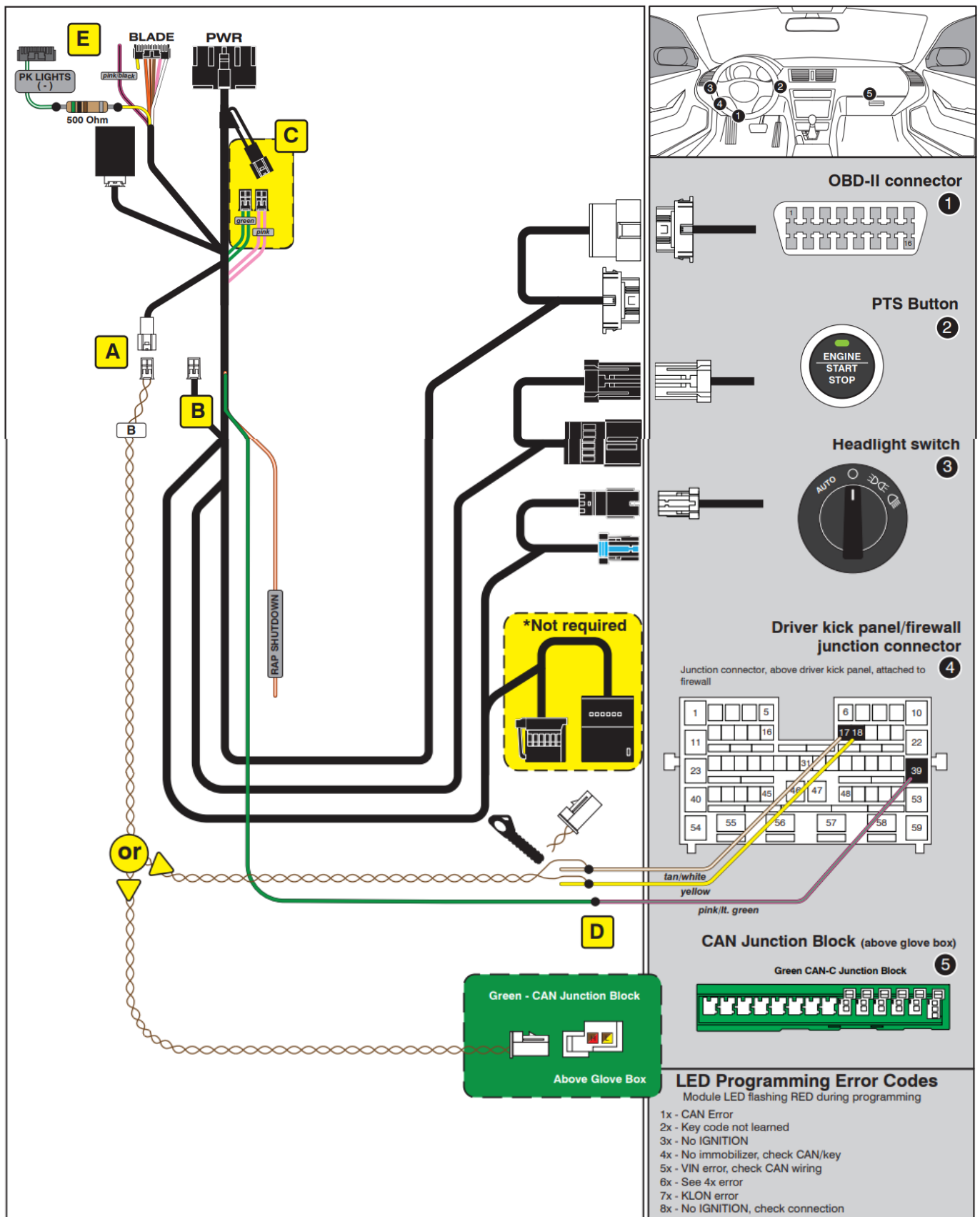
CM900AS/900S Jumper



START
ACC
IGN1



FEATURE COVERAGE	
IMMOBILIZER DATA	●
ARM OEM ALARM	●
DISARM OEM ALARM	●
DOOR LOCK	●
DOOR UNLOCK	●
PRIORITY UNLOCK	●
TRUNK/HATCH RELEASE	
POWER LIFTGATE	●
POWER SLIDING DOOR (L)	●
POWER SLIDING DOOR (R)	●
SECURE TAKEOVER	●
DOOR STATUS	●
TRUNK STATUS	●
HOOD STATUS	●
E-BRAKE STATUS	●
TACH OUTPUT	●
BRAKE STATUS	●
GLOW PLUG STATUS	
PARKING LIGHTS	●
HAZARD LIGHTS	
A/M CONTROL	●



MODULE PROGRAMMING PROCEDURE – PTS

I **IMPORTANT:** The hood must be closed.

1



Close driver door.
Re-open driver door to wake up
data bus.

2



Press UNLOCK on OEM remote.

(If the vehicle is not equipped
with an OEM remote, press
on the module programming
button.)

3



Wait, LED will flash BLUE once
[1x]. If LED does not flash
GREEN, repeat step 2.

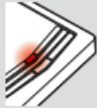
4

OFF ACC **ON** START
▲

Set ignition to ON position.



5



Wait, if LED turns solid RED
proceed to step 6.
If LED flashes BLUE rapidly,
proceed to step 10.

6

OFF ACC ON START
▲

Set ignition to OFF position.



7



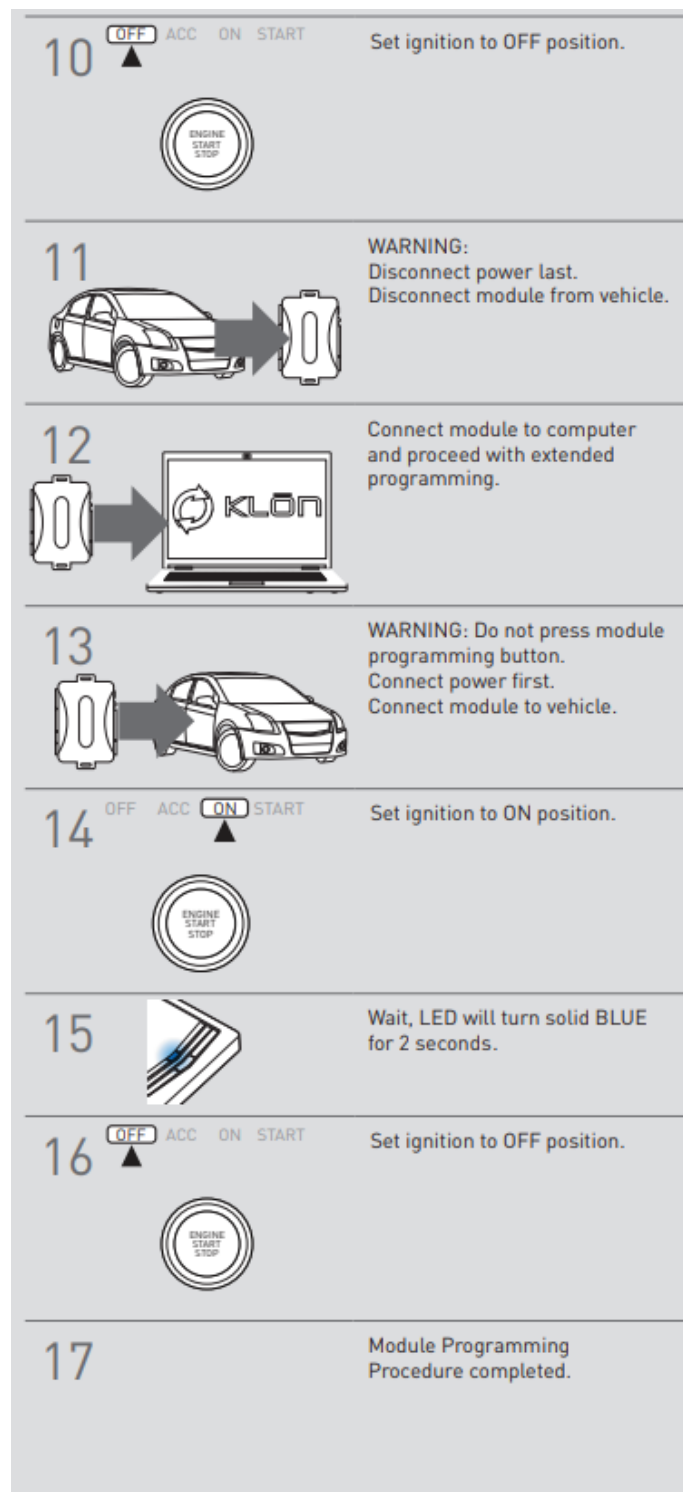
Repeat steps 4 to 6, eight times
[8x].

8

OFF ACC **ON** START
▲

Set ignition to ON position.





IMPORTANT

All vehicle doors must be closed and locked prior to the remote start sequence. Failure to comply will result in a remote starter malfunction.

TAKE OVER PROCEDURE – PTS – TO THE VEHICLE OWNER

NOTE

All vehicle doors must be closed and locked prior to the remote start sequence.



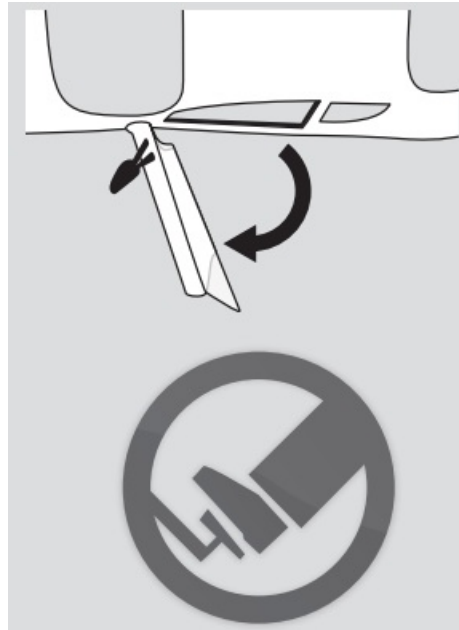


1. Unlock the vehicle door using an OEM or after-market remote, or door request switch.

2. TIME RESTRICTION

Within 45 SECONDS from the previous step: Open the vehicle door. Enter vehicle. Close the vehicle door.

Press and release the BRAKE pedal



3. Take-over procedure completed.

Failure to follow procedure will result in vehicle engine shutdown.

- WWW.IDATALINK.COM
- Automotive Data Solutions Inc. © 2020

Product Specifications

- **Make:** DL-CH12 Chrysler
- **Model:** Grand Caravan PTS
- **Year:** 2021-2023
- **Install Type:** 1C
- **Lights:** Park / Auto
- **Type:** B2
- **IGN:** PINK

Product Usage Instructions

Module Programming Procedure – PTS

1. Close the driver door and then re-open it to wake up the data bus.
2. Press UNLOCK on the OEM remote. If the vehicle does not have an OEM remote, press on the module programming button.
3. Wait for the LED to flash BLUE once. If it does not flash GREEN, repeat step 2

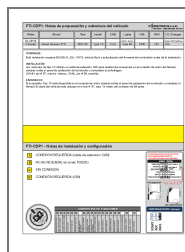
4. Set ignition to OFF position.
5. Disconnect power last and then disconnect the module from the vehicle.
6. Connect the module to a computer and proceed with extended programming.
7. Repeat steps 4 to 6 eight times.
8. Set ignition to ON position.
9. Wait for the LED to turn solid BLUE for 2 seconds.
10. If the LED flashes BLUE rapidly, proceed to step 10. Otherwise, proceed to step 16.
11. Set ignition to OFF position.
12. Module Programming Procedure completed when the LED flashes BLUE rapidly.

Frequently Asked Questions (FAQ)

Q: What should I do before starting the vehicle with the remote starter?

A: All vehicle doors must be closed and locked prior to the remote start sequence to avoid any malfunctions.

Documents / Resources



[myFirstech DL-CH12 Grand Caravan PTS](#) [pdf] Instruction Manual
2021, 2022, 2023, DL-CH12 Grand Caravan PTS, DL-CH12, Grand Caravan PTS, Caravan PT
S, PTS

References

- [iDatalink - Home](#)
- [User Manual](#)

Manuals+ Privacy Policy

This website is an independent publication and is neither affiliated with nor endorsed by any of the trademark owners. The "Bluetooth®" word mark and logos are registered trademarks owned by Bluetooth SIG, Inc. The "Wi-Fi®" word mark and logos are registered trademarks owned by the Wi-Fi Alliance. Any use of these marks on this website does not imply any affiliation with or endorsement.