

m.ybat

**mybat
GE10
Bluetooth
Earphone**



mybat GE10 Bluetooth Earphone User Manual

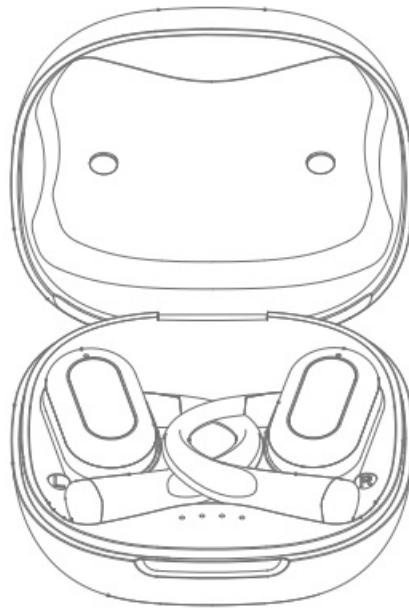
[Home](#) » [MyBat](#) » mybat GE10 Bluetooth Earphone User Manual 

Contents

- 1 mybat GE10 Bluetooth Earphone
- 2 GET READY FOR SOMETHING GREAT
- 3 PACKAGE CONTENTS
- 4 PRODUCT OVERVIEW
- 5 HOW TO CHARGE
- 6 CHARGING CASE POWER INDICATOR
- 7 POWER ON/OFF
- 8 HOW TO PAIR
- 9 MUSIC CONTROLS
- 10 SPECIFICATIONS
- 11 IMPORTANT SAFETY INSTRUCTIONS
- 12 FCC STATEMENT
- 13 Documents / Resources
 - 13.1 References
- 14 Related Posts

m.ybat

mybat GE10 Bluetooth Earphone

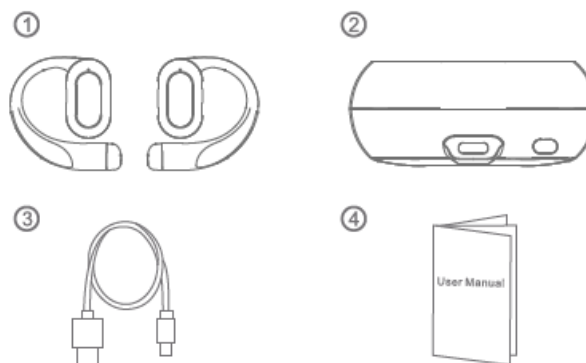


GET READY FOR SOMETHING GREAT

Enjoy the Design Lab Series Open-Ear True Wireless Earbuds! Get ready to experience sound in a whole new way. These open-ear design buds let you enjoy your music while staying aware of your surroundings. Engineered for both comfort and clarity, they redefine your listening experience. It's not just about music anymore-it's about staying connected to the world around you while enjoying your favorite tunes. Please read this user manual carefully and keep it for future reference.

PACKAGE CONTENTS

1.



Open-Ear True Wireless Earbuds

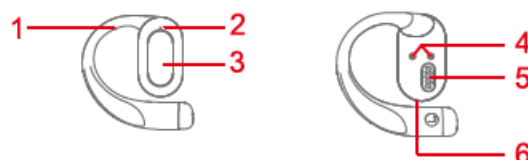
2. Charging Case With LED Power Display

3. USB-C Charging Cable

4. User Manual

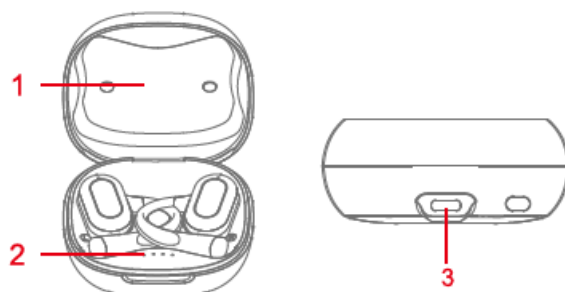
PRODUCT OVERVIEW

Earbuds



1. Ear Hook
2. LED Indicator Light
3. Touch Control
4. Charging Contact
5. Speaker
6. Built-In Mic Charging Case

Charging Case



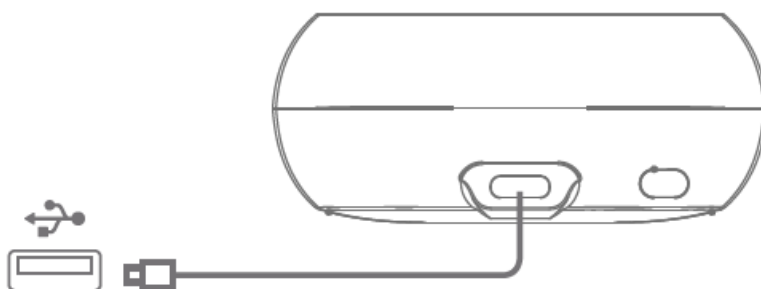
1. Cover
2. LED Power Display
3. USB-C Charging Port

HOW TO CHARGE

Fully charge the earbuds before first use.

NOTE: The earbuds take approximately 1 hour for a full charge, while the charging case takes an additional 2 hours.

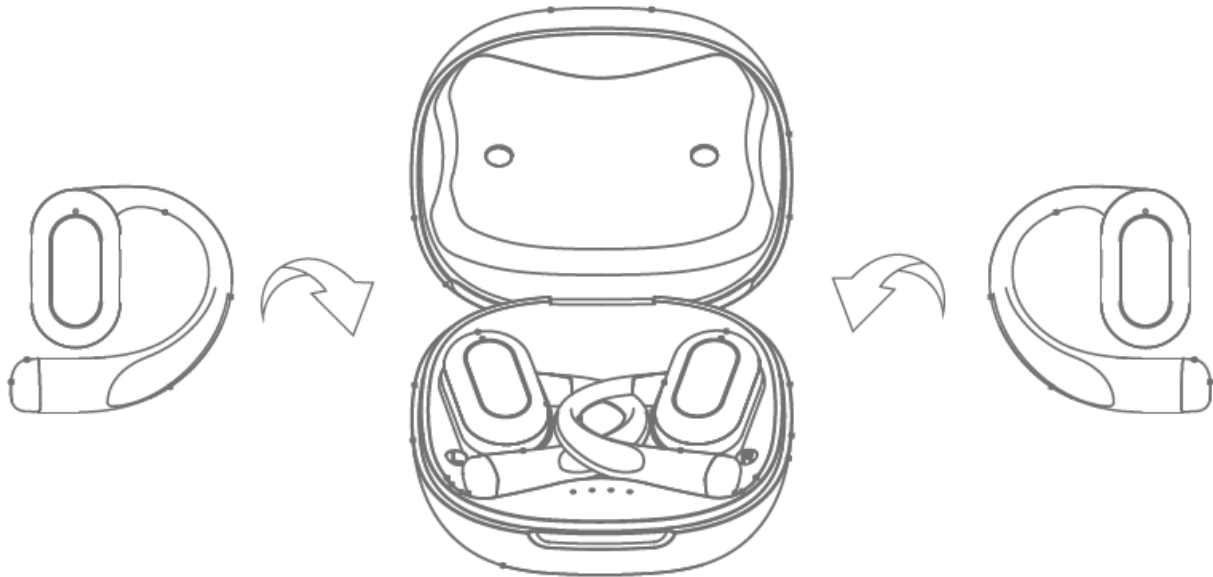
Charging The Case: Connect the USB-A plug to a charger with a 5W power output and insert the USB-C plug into the charging port.



Charge the Charging Case

Charging The Earbuds: Charging will begin once the earbuds are placed inside the case.

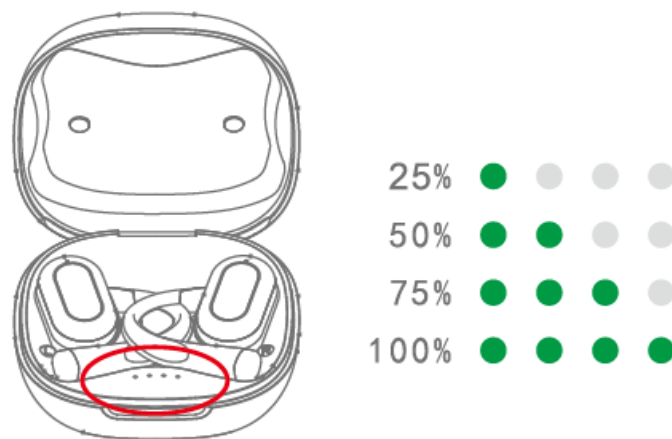
NOTE: There is no need to connect the case to a cable or power supply to charge the earbuds.



Charge the Headphones

CHARGING CASE POWER INDICATOR

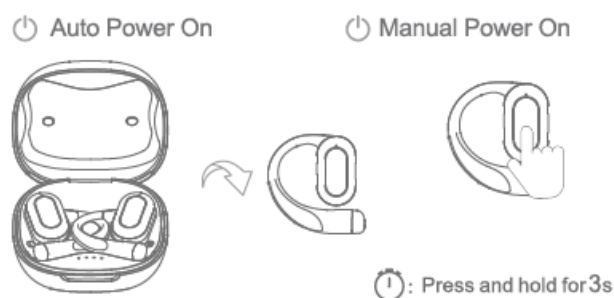
Whenever you place headphones into the case or connect a charging cable, the lights will indicate the charging case's battery level.



NOTE: While charging the 4th indicator light will flash continuously. All 4 lights will turn solid once fully charged.

POWER ON/OFF

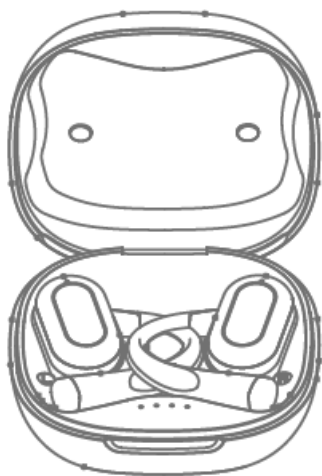
- **Power On:** Auto Power On: The earbuds will automatically power on when removed from the charging case.
Manual
- **Power On:** Press & hold the touch control on the earbuds for 3 seconds.



- **Power Off:** Auto Power Off: The earbuds will automatically power off when placed back in the charging case.

- **Power Off:** Press & hold the touch control on the earbuds for 5 seconds.

🔌 Auto Power Off



🔌 Manual Power Off



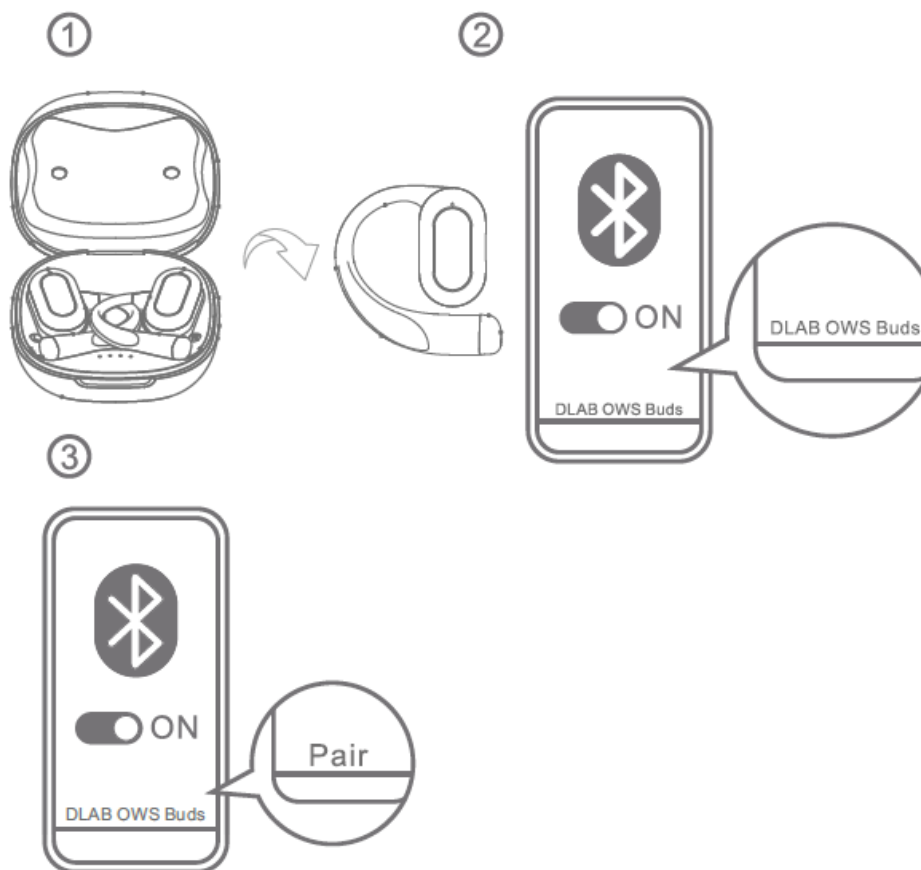
🕒: Press and hold for 5s

NOTE: After 3 minutes of no connection, the earbuds will automatically shut off.

HOW TO PAIR

1. Open the charging case and remove the earbuds. The earbuds will automatically power on and enter pairing mode.
2. Ensure your device's Bluetooth setting is turned on. 3. Choose "DLAB OWS Buds" from the list of found Bluetooth devices and click pair.

NOTE: Once turned on, the earbuds will automatically connect to your last paired device if it is within the Bluetooth range.



MUSIC CONTROLS

Play / Pause	Tap 2X (L/R Earbud)
Previous Track	Tap 3X (L Earbud)
Next Track	Tap 3X (R Earbud)
Volume-	Tap 1X (L Earbud)
Volume+	Tap 1X (R Earbud)

CALL CONTROLS

Answer / End a Call	Tap 2X (L/R Earbud)
Reject a Call	Tap & Hold For 2s (L/R Earbud)

VOICE CONTROLS

Activate Siri & Other Assistants	Tap & Hold For 3s (L/R Earbud)
---	---

SPECIFICATIONS

- Model: GE10 Bluetooth
- version: V5.4
- Bluetooth frequency: 2402MHz-2480MHz
- Bluetooth profile: AVRCP, A2DP, HFP, HSP
- Audio codec format: SBC, AAC Bluetooth range: 10 m/33 ft
- Driver size: 13mm diamond coated driver × 2
- Frequency response: 20Hz~20kHz
- Impedance: 16Q Input: DC 5V/500mA
- Battery capacity: 35mAh x 2 (headphones); 400mAh (charging case)
- Charging time: 1 hours (for headphones); 2 hours (for charging case via USB)
- Playtime: 5 hours (varies by volume level and content)

IMPORTANT SAFETY INSTRUCTIONS

To avoid hearing damage, limit the time you use headphones at high volume and set the volume to a safe level. The louder the volume, the shorter the safe listening time is. Be sure to observe the following guidelines when using your earpieces.

- Listen at reasonable volumes for reasonable periods of time.
- Be careful not to adjust the volume continuously upwards as your hearing adapts.
- Do not turn up the volume so high that you can't hear what's around you.
- You should use caution or temporarily discontinue use in potentially hazardous situations.
- Excessive sound pressure from earphones and headphones can cause hearing loss.
- Using headphones with both ears covered while driving is not recommended and may be illegal in some areas while driving.
- For your safety, avoid distractions from music or phone calls while in traffic or other potentially dangerous environments.

FCC STATEMENT

This equipment has been tested and found to comply with the limits for a Class B digital device, pursuant to Part 15 of the FCC Rules. These limits are designed to provide reasonable protection against harmful interference in a residential installation. This equipment generates and can radiate radio frequency energy and, if not installed and used in accordance with these instructions, may cause harmful interference to radio communications. However, there is no guarantee that interference will not occur in a particular installation. If this equipment does cause harmful interference to radio or television reception, which can be determined by turning the equipment off and on, the user is encouraged to try to correct the interference by one or more of the following measures:

- Reorient or relocate the receiving antenna.
- Increase the separation between the equipment and receiver.
- Connect the equipment into an outlet on a circuit different from that to which the receiver is connected.
- Consult the dealer or experienced radio/TV technician for help.

This device complies with Part 15 of the FCC Rules. Operation is subject to the following two conditions:

1. This device may not cause harmful interference and
2. This device must not accept any interference received, including interference that may cause undesired operation.

Changes or modifications not expressly approved by the party responsible for compliance could void the user's authority to operate the equipment.

The device has been evaluated to meet general RF exposure requirement. The device can be used in portable exposure condition without restriction.

WARNING: Cancer and Reproductive Harm www.P65Warnings.ca.gov

Made in China



www.mybatpro.com

Documents / Resources

	<p>mybat GE10 Bluetooth Earphone [pdf] User Manual GE10, GE10 Bluetooth Earphone, Bluetooth Earphone, Earphone</p>
--	--

References

- [User Manual](#)

[Manuals+](#), [Privacy Policy](#)

This website is an independent publication and is neither affiliated with nor endorsed by any of the trademark owners. The "Bluetooth®" word mark and logos are registered trademarks owned by Bluetooth SIG, Inc. The "Wi-Fi®" word mark and logos are registered trademarks owned by the Wi-Fi Alliance. Any use of these marks on this website does not imply any affiliation with or endorsement.