



MyBat PRO Euphoric Bluetooth Headset Instructions

[Home](#) » [MYBAT PRO](#) » MyBat PRO Euphoric Bluetooth Headset Instructions 

Contents

- [1 MyBat PRO Euphoric Bluetooth Headset](#)
- [2 PACKAGE CONTENTS](#)
- [3 PRODUCT OVERVIEW](#)
- [4 HOW TO CHARGE](#)
- [5 LED INDICATORS](#)
- [6 POWER ON/OFF](#)
- [7 BLUETOOTH PAIRING](#)
- [8 MUSIC CONTROLS](#)
- [9 CALL CONTROLS](#)
- [10 AUX-IN PLAY](#)
- [11 MICRO SD CARD PLAY](#)
- [12 SPECIFICATIONS](#)
- [13 IMPORTANT SAFETY INSTRUCTIONS](#)
- [14 FCC STATEMENT](#)
- [15 Documents / Resources](#)

MyBat PRO Euphoric Bluetooth Headset

WELCOME

Thank you for using the MyBat Pro Euphoric Bluetooth Headphones. Immerse yourself in a realm of unparalleled euphoria as you explore a harmonious blend of captivating style and exceptional sound quality, embodied in the sleek over-ear design that envelops your senses.

Please read this user manual carefully and keep it for future reference.

PACKAGE CONTENTS

1. Euphoric Bluetooth Headphones
2. USB-C Charging Cable
3. 3.5mm Auxiliary Cable
4. User Manual



PRODUCT OVERVIEW

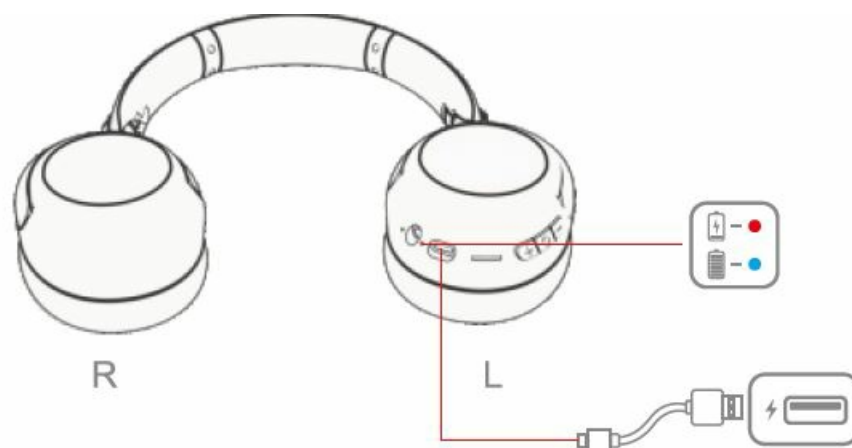


1. Volume Down / Next Track
2. Multi-Function Button (MFB): Power ON/OFF, Play/Pause, Answer/Hang Up
3. Volume Up / Previous Track
4. Micro SD Slot
5. LED Indicator
6. USB-C Charging Port
7. Built-In Microphone
8. 3.5mm Auxiliary Input

HOW TO CHARGE

Fully charge the Euphoric before first use.

NOTE: It takes approximately two hours for a full charge.



Connect the USB-A plug to a charger with a 5W power output, and insert the USB-C plug into the charging port.

LED INDICATORS

	Steady red	Charging
	Steady Blue	Fully charged

POWER ON/OFF

- **Power On:**

Press & Hold the MB button for 3 seconds.

The LED indicator will light up blue and turn off after 3 seconds.

- **Power Off:**

Press & Hold the MB button for 3 seconds.

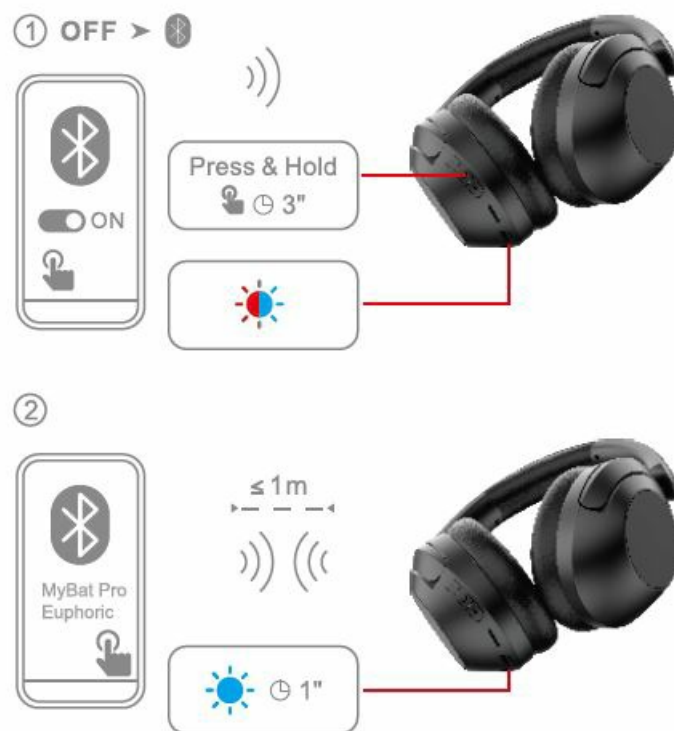
The LED indicator will light up red and turn off after 1 second.

NOTE: After three minutes of inactivity or if there is no connection, the headphones will automatically turn off.



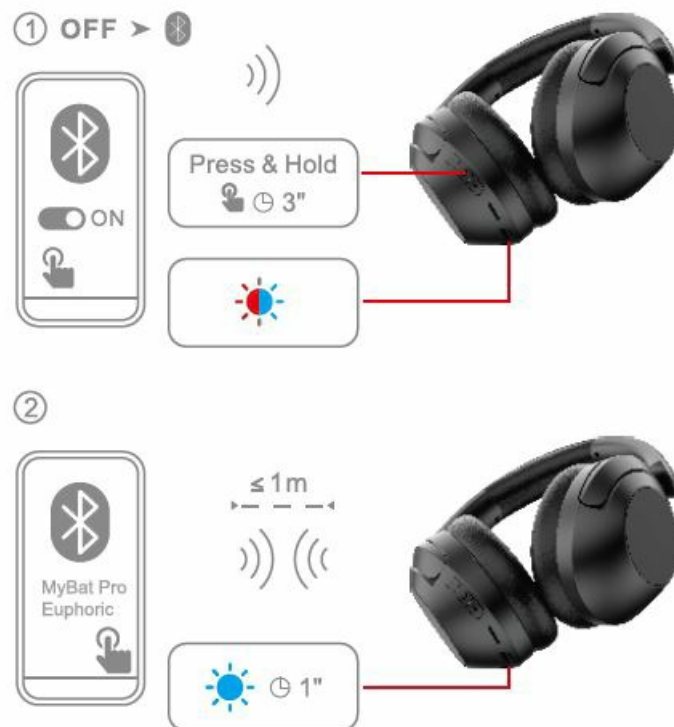
BLUETOOTH PAIRING

1. Press and hold the MB button for 3 seconds to turn on the headphones. The LED indicator light will alternately flash red and blue as the headphones enter the pairing mode.
2. Ensure your device's Bluetooth setting is turned on.
3. Choose "MyBat Pro Euphoric" from the list of found Bluetooth devices and click pair. The LED Indicator will flash blue once connected.



NOTE: Once turned on, the headphones will automatically connect to your last paired device if it is within the Bluetooth range.

MUSIC CONTROLS



CALL CONTROLS



AUX-IN PLAY

- Wired listening is possible when the headphones are powered off or out of power with the included 3.5mm audio cable.
- Bluetooth and button functions are disabled in Aux-In Play mode.
- If the headphones are paired via Bluetooth, you will hear a voice prompt "power off" when inserting the 3.5mm cable. The headset will then automatically shut down and enter Aux-In Play.

NOTE: If you want to use Bluetooth, please unplug the 3.5mm auxiliary audio cable and reset the headphones.

MICRO SD CARD PLAY

1. Insert the Micro SD card into the headphones, and the device will automatically play the music stored on it.
2. Using Micro SD Play mode, you can only listen to the music on the card and cannot make phone calls.
3. Hold both the “” and +” buttons at the same time to switch between Bluetooth and Micro SD Play modes.

SPECIFICATIONS

Bluetooth Version	5.3
Operation Frequency	2.402-2.480GHz
Supported Formats	HFP,A2DP,AVRCP
Bluetooth Range	10m/33ft
Playlime	-14 Hours (60% volume)
Talk Time	-12 Hours (60% volume)
Battery	350mAh Lithium Polymer Battery
Charge Time	-1.5- 2Hours
Operating temperature	-10-55"
Driver Diameter	40mm
Rated Impedance	320 ± 15¼

Frequency Range	20-20kHz
Sensitivity	119± 3dB
Product Weight	210g

IMPORTANT SAFETY INSTRUCTIONS

To avoid hearing damage, limit the time you use headphones at high volume and set the volume to a safe level. The louder the volume, the shorter the safe listening time is.

Be sure to observe the following guidelines when using your headphones:

- Listen at reasonable volumes for reasonable periods
- Be careful not to adjust the volume continuously upwards as your hearing adapts.
- Do not turn up the volume so high that you can't hear what's around you.
- You should use caution or temporarily discontinue use in potentially hazardous situations.
- Excessive sound pressure from earphones and headphones can cause hearing loss.
- Using headphones with both ears covered while driving is not recommended and may be illegal in some areas.
- For your safety, avoid distractions from music or phone calls in traffic or other potentially dangerous environments.

FCC STATEMENT

This equipment has been tested and found to comply with the limits for a Class B digital device, pursuant to Part 15 of the FCC Rules. These limits are designed to provide reasonable protection against harmful interference in a residential installation. This equipment generates and can radiate radio frequency energy and, if not installed and used in accordance with these instructions, may cause harmful interference to radio communications. However, there is no guarantee that interference will not occur in a particular installation. If this equipment does cause harmful interference to radio or television reception, which can be determined by turning the equipment off and on, the user is encouraged to try to correct the interference by one or more of the following measures:

- Reorient or relocate the receiving antenna.
- Increase the separation between the equipment and receiver.
- Connect the equipment into an outlet on a circuit different from that to which the receiver is connected.
- Consult the dealer or experienced radio/TV technician for help.

This device complies with Part 15 of the FCC Rules.

Operation is subject to the following two conditions:

1. This device may not cause harmful interference and

2. this device must not accept any interference received, including interference that may cause undesired operation.

Changes or modifications not expressly approved by the party responsible for compliance could void the user's authority to operate the equipment.

WARNING: Cancer and Reproductive Harm


www.P65Warnings.ca.gov

Made in China

www.mybatpro.com

SCAN QR CODE TO ACCESS LIFETIME WARRANTY

Documents / Resources

	<p>MYBAT PRO MyBat PRO Euphoric Bluetooth Headset [pdf] Instructions MyBat PRO Euphoric Bluetooth Headset, MyBat PRO, Euphoric Bluetooth Headset, Bluetooth Headset, Headset</p>
---	--

[Manuals+](#)