



MXL AC-83 Bluetooth LE 5.0 Enable Boundary Microphone User Manual

[Home](#) » [MXL](#) » MXL AC-83 Bluetooth LE 5.0 Enable Boundary Microphone User Manual 

Contents

- [1 MXL AC-83 Bluetooth LE 5.0 Enable Boundary Microphone](#)
- [2 Product Information](#)
- [3 Product Usage Instructions](#)
- [4 Mac Pairing Procedure](#)
- [5 Turning Bluetooth ON/OFF](#)
- [6 Documents / Resources](#)
 - [6.1 References](#)
- [7 Related Posts](#)



MXL AC-83 Bluetooth LE 5.0 Enable Boundary Microphone



Product Information

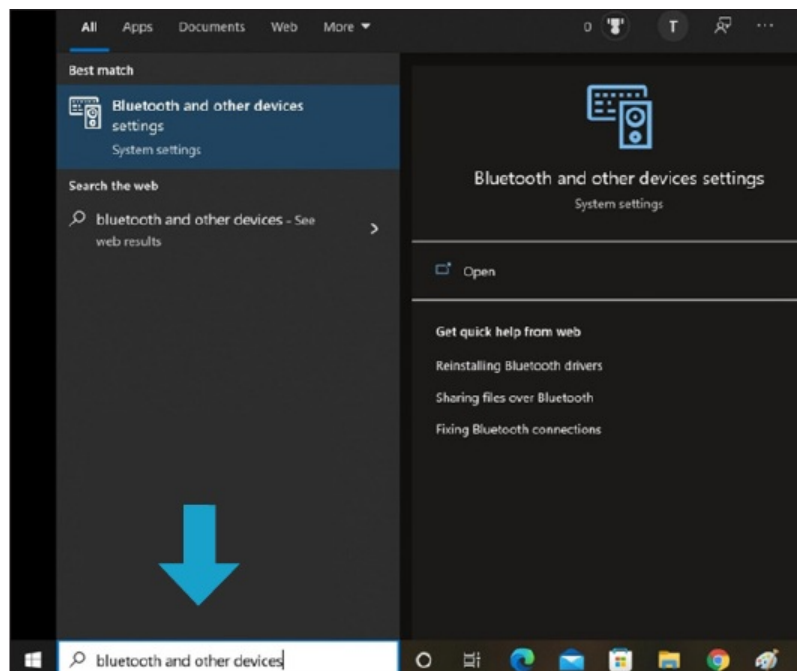
- **Product Name:** MXL AC83 Bluetooth LE 5.0 Enable Boundary Microphone
- **Compatibility:** Windows PC, Mac

Product Usage Instructions

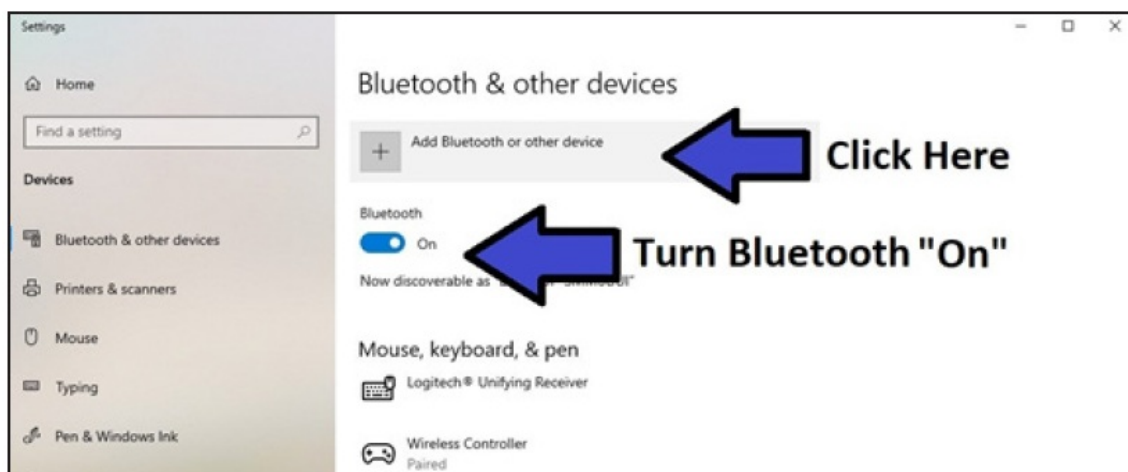
Windows PC Pairing Procedure

1. Open the Bluetooth and other devices system settings on your Windows PC. You can find these settings by typing “Bluetooth and other devices” in the search box at the bottom of the screen and pressing Enter.
2. In the “Add a device” window, click on the Bluetooth option.
3. The window will display Bluetooth devices within range. Select “MXL AC83” once it appears on the screen.
4. Toggle the Bluetooth slider to turn Bluetooth ON, then click the “Add Bluetooth or other device” button. This will open the “Bluetooth Add a device” window.
5. Initiate pairing mode on the MXL AC83 by pressing and holding the Bluetooth Power Button for 6-8 seconds.
6. The PC and microphone will attempt to establish a Bluetooth connection. Once paired successfully, the flashing on the MXL AC83 will stop, and the yellow LED will remain illuminated. A pop-up message will indicate that the pairing was successful.
7. The blue and yellow LEDs on the MXL AC83 will start flashing, indicating that the unit is in pairing mode.

Open the Bluetooth and other devices system settings on your Windows PC. These settings can be found by typing “Bluetooth and other devices” in the search box at the bot-tom of the screen and pressing Enter.



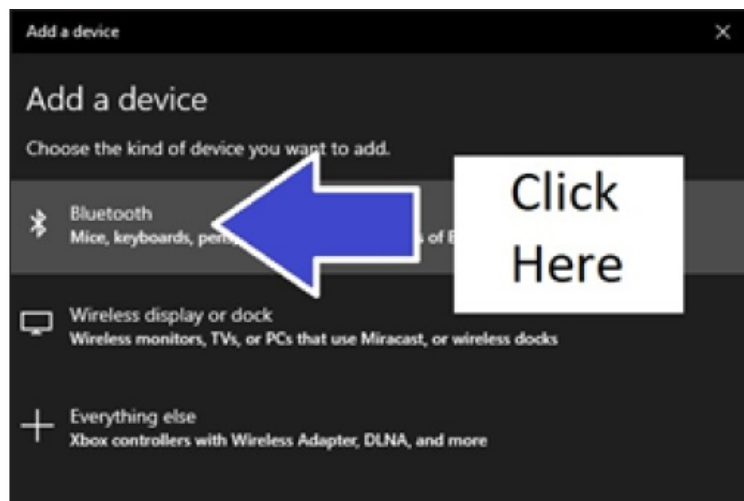
Use the Bluetooth toggle slider to turn Bluetooth ON, then click the Add Bluetooth or other device button. The Blue-tooth Add a device window will then appear on screen.



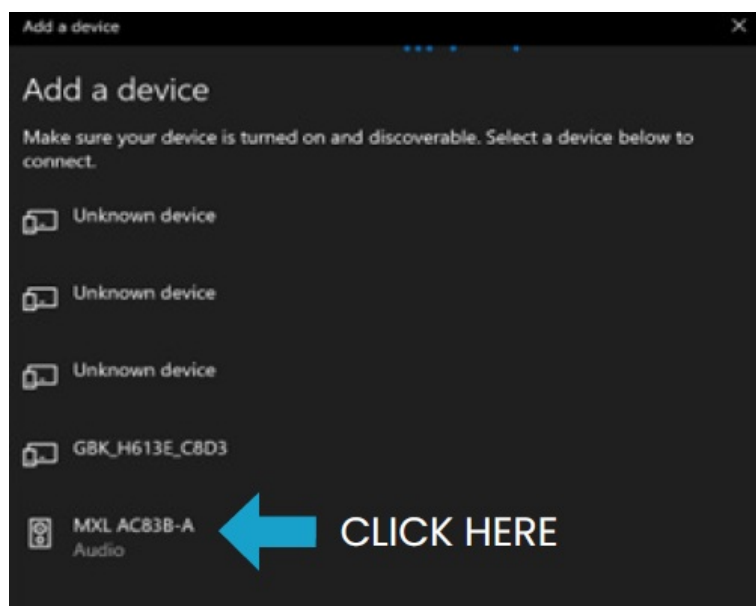
Next you will want to initiate pairing mode on the MXL AC83. Press and hold the Bluetooth Power Button for 6-8 seconds to enable pairing mode.



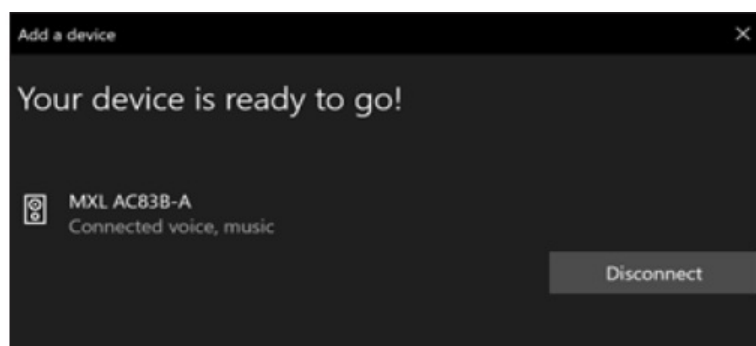
The blue and yellow LEDs will begin flashing to indicate that the unit is in pairing mode. Next click on the Bluetooth option in the Add a device window.



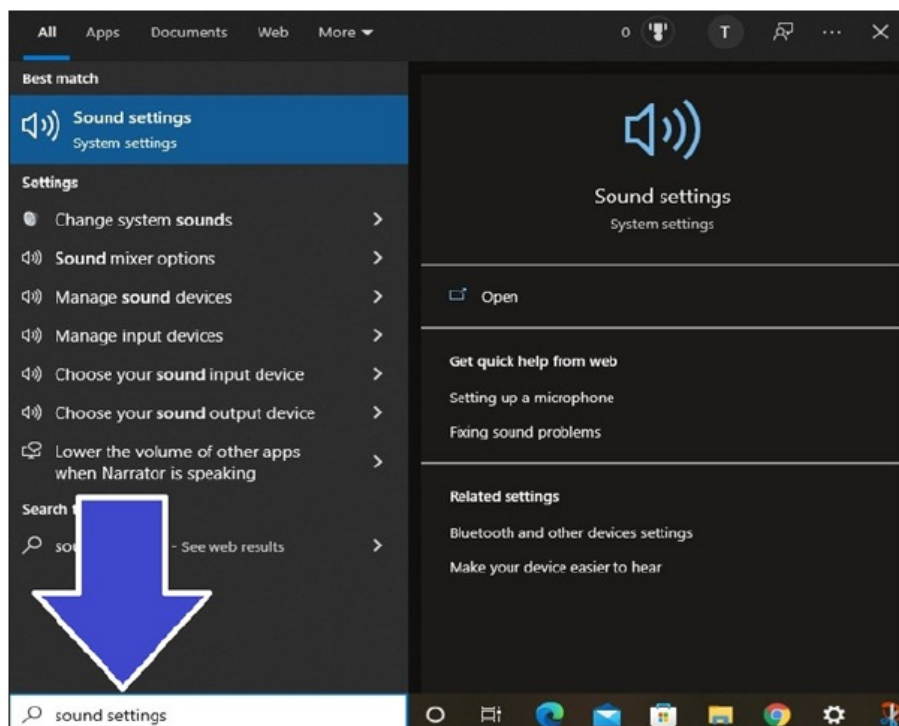
Bluetooth devices within range will begin appearing in the window. Select MXL AC83 once it appears on screen.



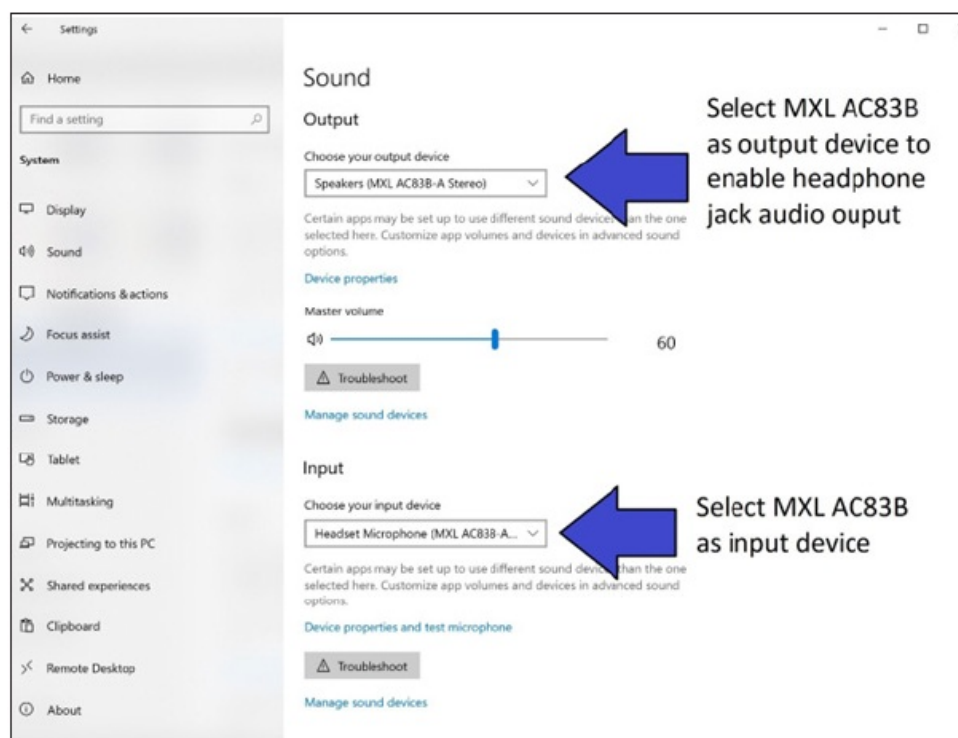
The PC and microphone will now attempt to establish a Bluetooth connection. Once the device has been successfully paired, the flashing on the MXL AC83 will stop and the yellow LED will remain illuminated. A message will pop up on screen indicating that the pairing was successful.



Now that a microphone has been successfully paired with the computer, you will need to select the correct settings in the Sound settings control panel. Type "sound settings" in the search box at the bottom of the screen and press enter to open the Sound settings control panel window.



The Sound settings control panel window will appear showing your currently active sound devices. You will need to select the correct devices for both Input and Output. For the Input device, select Headset Microphone (MXL AC83 Hands-Free AG Audio). For the Output device, you can enable the AC83 headphone output by selecting Speakers (MXL AC83 Stereo). You can alternatively select your current speakers or your computer's headphone output.

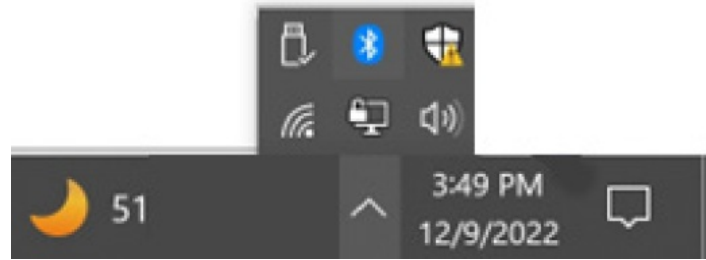


Your MXL AC83 microphone is now ready to use with your Windows PC.

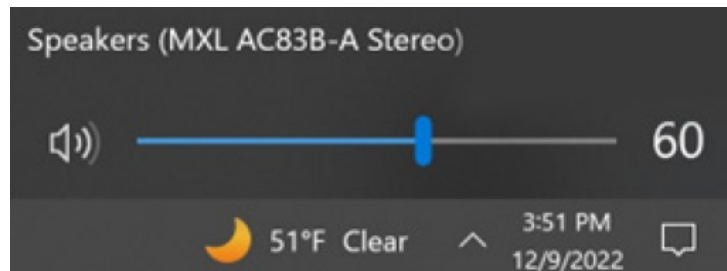
Important note if you are having problems with the AC83 headphone output:

There are two different Bluetooth profiles that Windows will automatically switch between: Mono output and Stereo output. Mono output is chosen when you are simultaneously using the microphone input. When there is no microphone input present, the higher quality Stereo profile is used instead. Unfortunately, some Windows applications may not switch Bluetooth profiles correctly, requiring you to manually select the appropriate output. To select the correct audio output, find your desktop icons on the bottom right corner of the screen and left click the

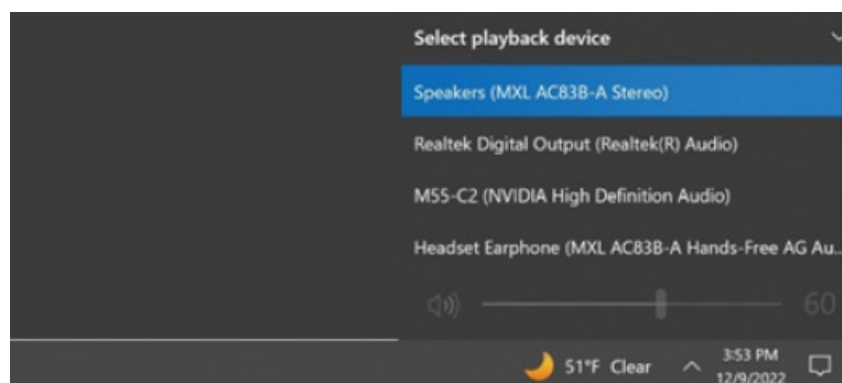
audio icon.



Left click the text showing your current output device.



For high quality stereo output with no microphone input, select Speakers (MXL AC83 Stereo) For mono output with simultaneous microphone input, select Headset Earphone (MXL AC83-A Hands-Free AG Audio).



Note:

If you are facing issues with the AC83 headphone output, Windows may automatically switch between Mono output and Stereo output.

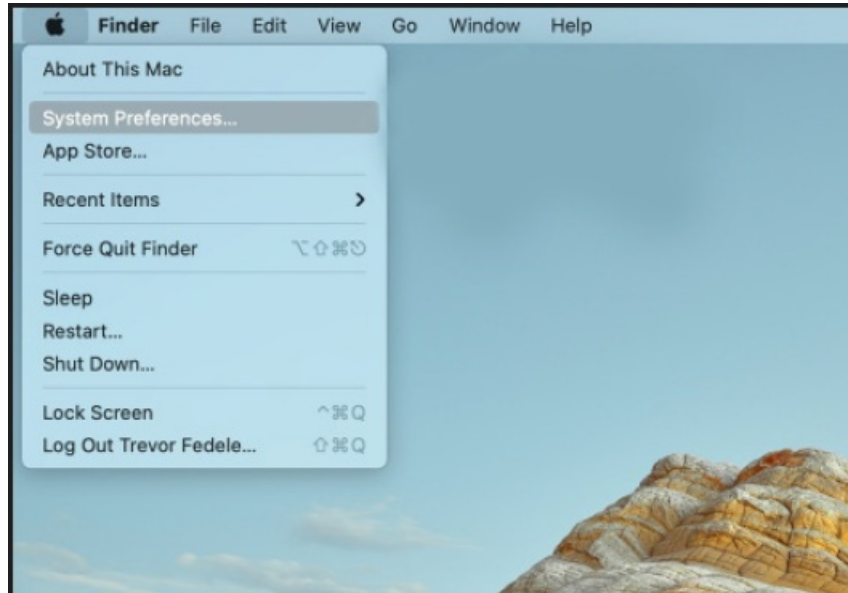
To manually select the appropriate output, follow these steps:

1. Find your desktop icons on the bottom right corner of the screen and left-click the audio icon.
2. The Sound settings control panel window will appear, showing your currently active sound devices.
3. Left-click the text displaying your current output device.
4. Select "Headset Microphone (MXL AC83 Hands-Free AG Audio)" as the Input device.
5. For the Output device, you can enable the AC83 headphone output by selecting "Speakers (MXL AC83 Stereo)". Alternatively, you can choose your current speakers or your computer's headphone output.
6. If you want high-quality stereo output with no microphone input, select "Speakers (MXL AC83 Stereo)". For mono output with simultaneous microphone input, select "Headset Earphone (MXL AC83-A Hands-Free AG Audio)".

Mac Pairing Procedure

1. Open the Apple menu at the top-left corner of the screen and select System Preferences.
2. Initiate pairing mode on the MXL AC83 by pressing and holding the Bluetooth Power Button for 6-8 seconds.

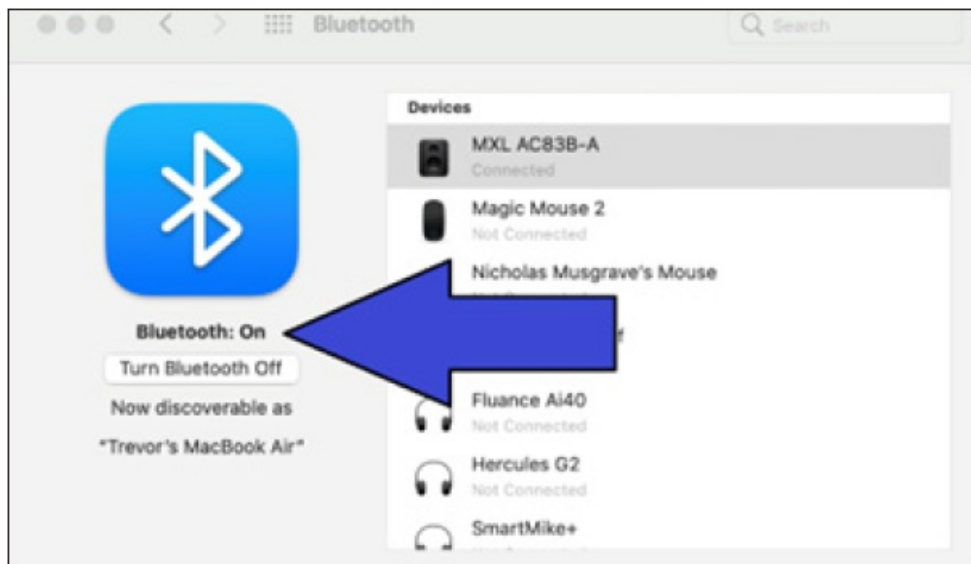
Open the Apple menu the at the top-left corner of the screen and select System Preferences.



Select the Bluetooth icon in the System Preferences panel.



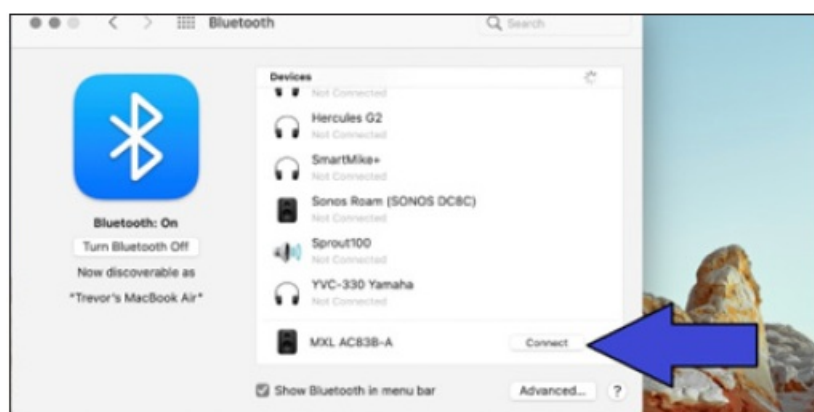
Confirm that Bluetooth is set to On. If Bluetooth is Off, click the Turn Bluetooth On button.



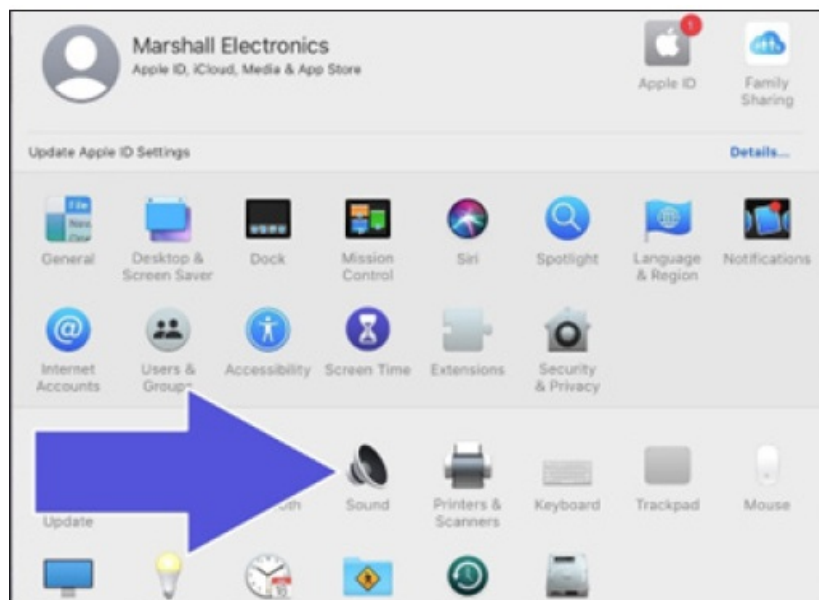
Next you will want to initiate pairing mode on the MXL AC83. Press and hold the Bluetooth Power Button for 6-8 seconds to enable pairing mode.



The blue and yellow LEDs will begin flashing to indicate that the unit is in pairing mode. MXL AC83-A should now appear in the Bluetooth menu. Click the Connect button to initiate a Bluetooth connection.



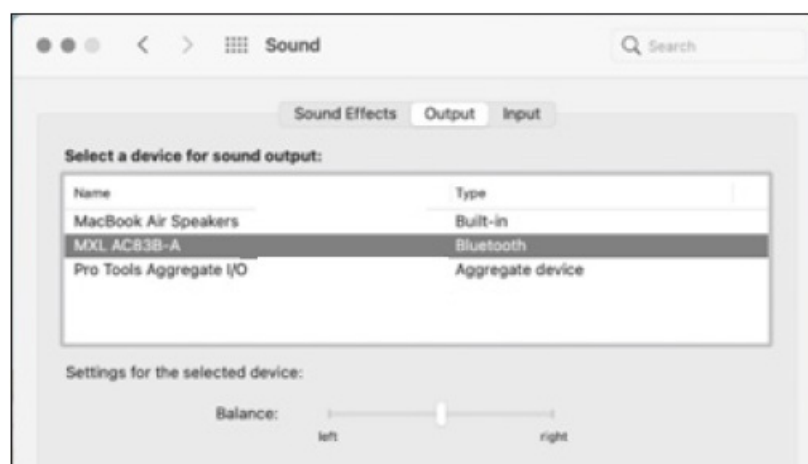
The computer and microphone will now attempt to establish a Bluetooth connection. Once the device has been successfully paired, the flashing on the MXL AC83 will stop and the yellow LED will remain illuminated. Now that a microphone has been successfully paired with the computer, you will need to select the correct sound set-tings. Return to the System Preferences panel and select the Sound icon.



For the Input device, select MXL AC83.



For the Output device, you can enable the AC83 headphone output by selecting MXL AC83. You can alternatively select your current speakers or any other output device.



Your MXL AC83 microphone is now ready to use with your Mac computer.



Your MXL AC83 microphone is now ready to use with your Windows PC or Mac.

Turning Bluetooth ON/OFF

Briefly press the Bluetooth Power Button to turn Bluetooth ON or OFF. When turning Bluetooth ON, LED 1 will begin flash-ing to indicate the microphone is attempting to link back with the most recently paired device. Once the unit has re-connected with the most recently paired device, LED 1 will illuminate solid yellow and LED 3 will turn on.

USB-C Audio

To enable USB audio, simply connect the microphone to a computer using a standard USB-C cable.

Headphone Output

3.5mm headphone connector for audio output

Mute Button

The capacitive mute button can be used to mute both Bluetooth audio as well as USB audio. To mute the device, briefly press the MXL logo. The LED will change from Blue to Red indicating the device has been muted.

LED 1 – Bluetooth Status

The Bluetooth Power Button has a built-in yellow LED to indicate that Bluetooth is enabled or if the device is pairing.

- **Solid Yellow:** Bluetooth is enabled
- **Flashing Yellow:** Bluetooth pairing
- **OFF:** Bluetooth is disabled
- **LED 1** will also very briefly flash after pressing the Bluetooth Power Button.

LED 2 – Battery Status

LED 2 is used to indicate the current status of the battery.

- **Solid Blue:** Battery is charging. Once the battery is fully charged LED 2 will turn off.
- **Flashing Blue:** Bluetooth pairing (only when unit is not being charged)
- **Red:** Low battery
- **Purple:** The battery is low and is currently being charged LED 2 will also very briefly flash after pressing the

Bluetooth Power Button.

LED 3 – Mute Status

LED 3 indicates the mute status of the microphone. This LED will only turn on if USB audio is connected or if Bluetooth has successfully paired with another device.

- **Red** : The Mic is muted
- **Blue** : The Mic is ON
- **OFF** : There is no Bluetooth connection or USB audio present

A Division of Marshall Electronics

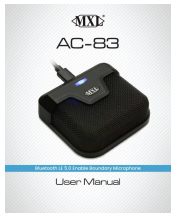
Phone: 310-333-0606 800-800-6608

Fax: 310-333-0688

www.mxlmics.com

sales@mxlmics.com

Documents / Resources



[MXL AC-83 Bluetooth LE 5.0 Enable Boundary Microphone](#) [pdf] User Manual

AC-83, MXL AC83, AC-83 Bluetooth LE 5.0 Enable Boundary Microphone, AC-83, Bluetooth LE 5.0 Enable Boundary Microphone, 5.0 Enable Boundary Microphone, Enable Boundary Microphone, Boundary Microphone, Microphone

References

-  [MXL Mics – Create With MXL](#)