

mxion SMB Level Crossing Control User Manual

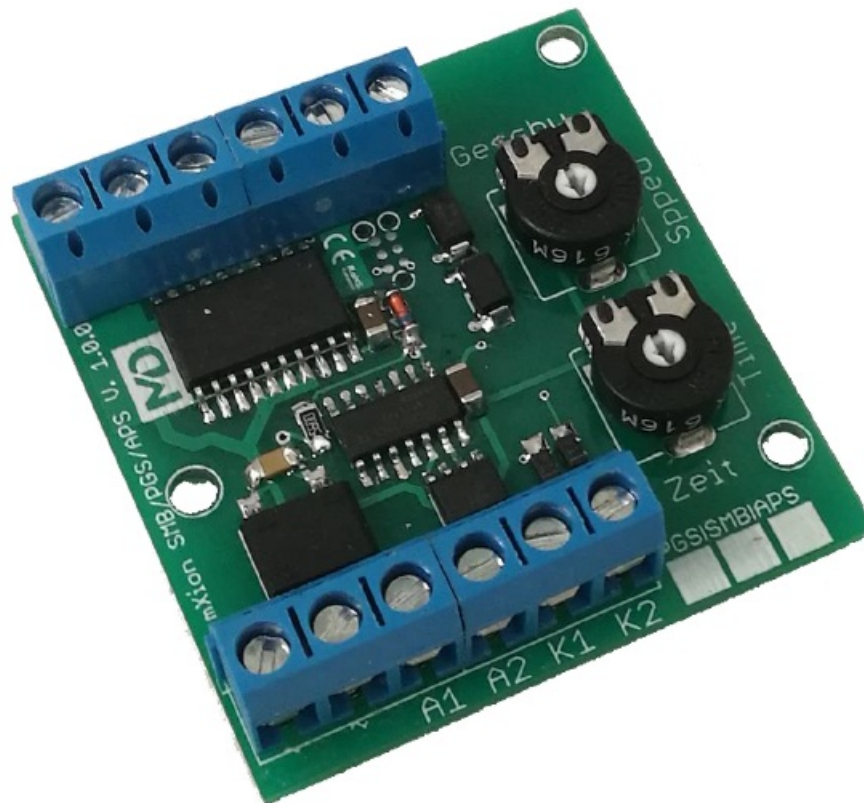
[Home](#) » [mXion](#) » mxion SMB Level Crossing Control User Manual 

Contents

- [1 mxion SMB Level Crossing Control](#)
- [2 Introduction](#)
- [3 General information](#)
- [4 Connectors](#)
- [5 Product Description](#)
- [6 Technical data](#)
- [7 Warranty, Service, and Support](#)
- [8 Documents / Resources](#)
 - [8.1 References](#)
- [9 Related Posts](#)



mxion SMB Level Crossing Control



Introduction

Dear customer, we strongly recommend that you read these manuals and the warning notes thoroughly before installing and operating your device. The device is not a toy (15+).

NOTE: Make sure that the outputs are set to the appropriate value before hooking up any other device. We can't be responsible for any damage if this is disregarded.

General information

We recommend studying this manual thoroughly before installing and operating your new device. Place the decoder in a protected location. The unit must not be exposed to moisture.

NOTE: Some functions are only available with the latest firmware. Please make sure that your device is programmed with the latest firmware.

Summary of Functions

- DC/AC/DCC operation
- 2 engine outputs (each 0,8A)
- 2 contact inputs
- 2 function outputs
- Poti for speed
- Poti for drive time
- Screw drives for stable mounting

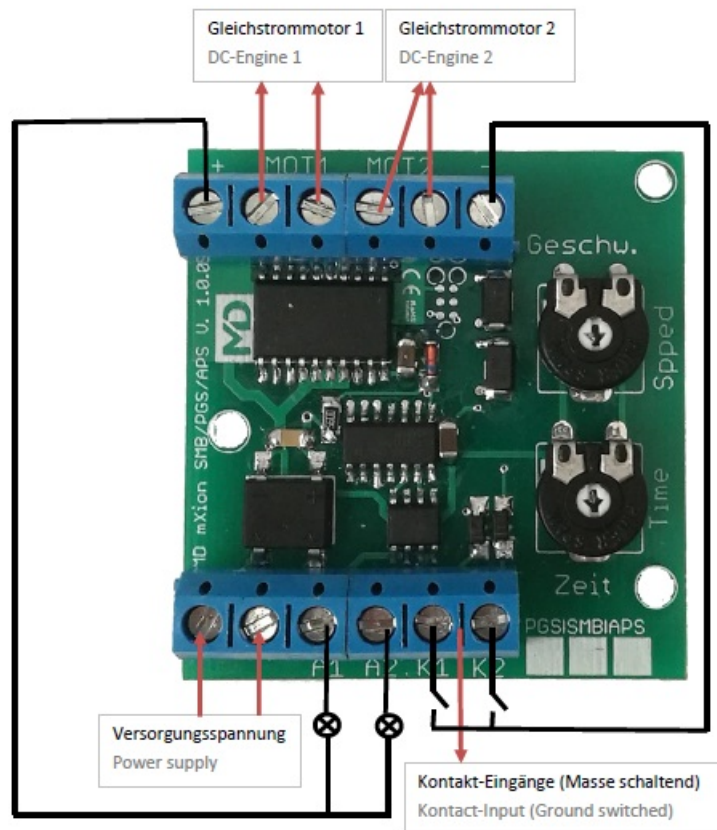
Scope of supply

- Manual
- mXion SMB

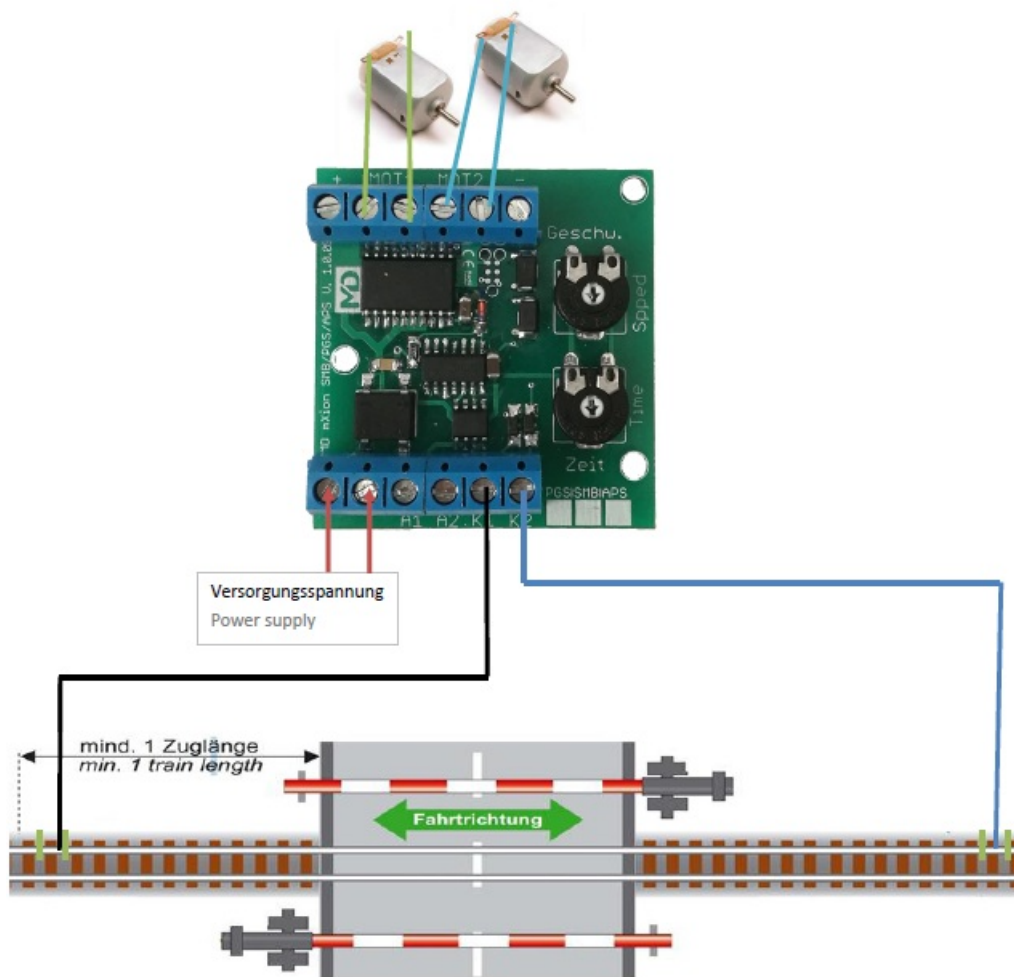
Hook-Up

Install your device in compliance with the connecting diagrams in this manual. The device is protected against shorts and excessive loads. However, in case of a connection error e.g. a short this safety feature can't work and the device will be destroyed subsequently. Make sure that there is no short circuit caused by the mounting screws or metal.

Connectors



The switch command for K1/K2 can come over the switch, pusher, light sensor, reed, etc... If the switch command can directly come from driving trains if you make a small piece cutout on one side. This will only work in digital mode.



Product Description

The mXion SMB is a versatile module. Ideally, it is to control railway crossings too. It is possible to connect one motor to one alternately suitable for barrier movement (A1/A2). The contacts K1/K2 switch depending on the direction, i.e. if K1 has been switched first, K2 must be switched to be able to start the barrier again and vice versa. This makes it possible to use the module in div. modes. The module can be used both, analog & digital. In analog, the contact inputs can be simply switched by the switch, push, reed or light barrier. In digital, you can use all the same as in analog mode, but the simplest way is to make a short cut-out piece of track (e.g. 2 cm) that driving trains will close this piece and switch the SMBs K1 or K2. This solution is the easiest way to control in an automatic way. The speed and travel time of the engines can be adjusted via the 2 pots. The two outputs A1 and A2 enter alternating flashing while the engine is moving.

Technical data

- Power supply: 7-25V DC/DCC 5-18V AC
- Current: 10mA (without functions)
- Maximum function current: A1/A2 each 1A
- Mot1/Mot2 each 0,8A
- Temperature range: -20 up to 80°C
- Dimensions L*B*H (cm): 4.9*4.7*2

NOTE: In case you intend to utilize this device below freezing temperatures, make sure it was stored in a heated environment before the operation to prevent the generation of condensed water. During operation is sufficient to prevent condensed water.


Warranty, Service, and Support

micron-dynamics warrants this product against defects in materials and workmanship for one year from the original date of purchase. Other countries might have different legal warranty situations. Normal wear and tear, consumer modifications as well as improper use or installation are not covered. Peripheral component damage is not covered by this warranty. Valid warrants claims will be serviced without charge within the warranty period. For warranty service please return the product to the manufacturer. Return shipping charges are not covered by micron-dynamics. Please include your proof of purchase with the returned goods. Please check our website for up-to-date brochures, product information, documentation, and software updates. Software updates you can do with our updater or you can send us the product, we update for you free. Errors and changes excepted.

Hotline

For technical support and schematics for application examples contact: micron-dynamics info@micron-dynamics.de service@micron-dynamics.de

Documents / Resources

	<p>mxion SMB Level Crossing Control [pdf] User Manual SMB Level Crossing Control, SMB, SMB Crossing Control, Level Crossing Control, Crossing Control, Level Crossing</p>
---	--

References

- [▢ Top Fahrradbekleidung für Damen & Herren - Ride your Style](#)
- [☒ micron-dynamics](#)
- [☒ micron-dynamics](#)