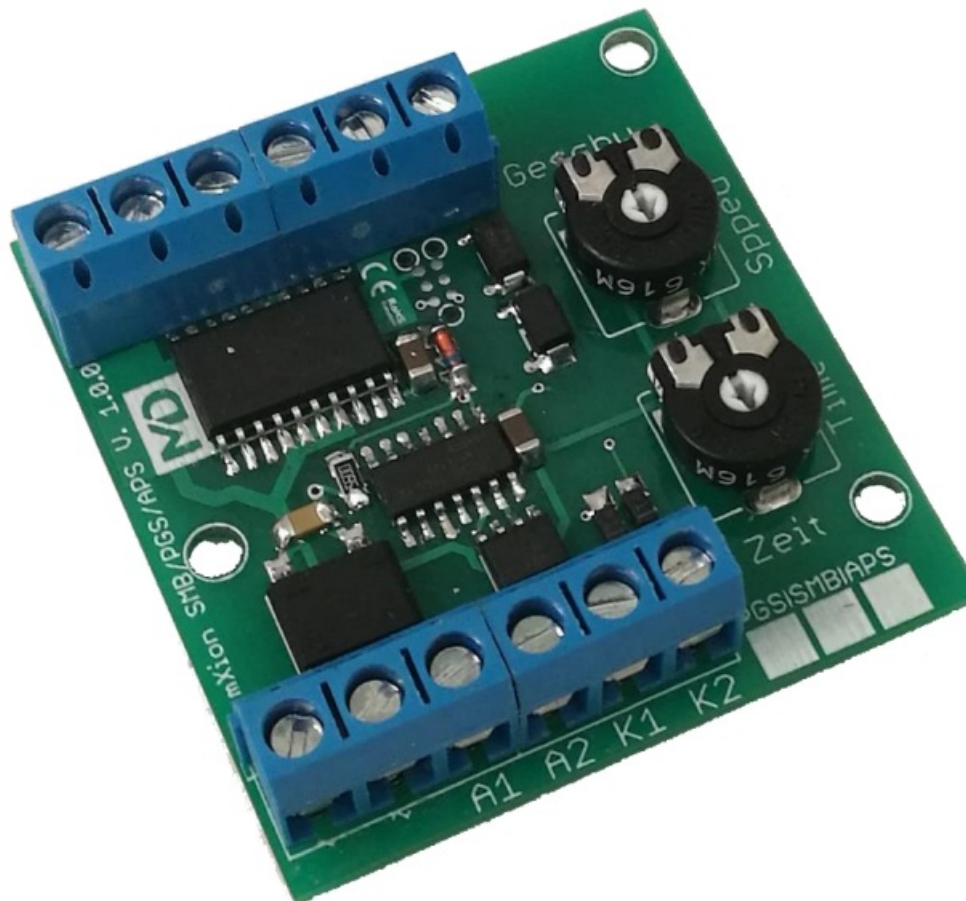


# mXion PGS Pantograph Control Module User Manual

[Home](#) » [mXion](#) » mXion PGS Pantograph Control Module User Manual 

mXion PGS Pantograph Control Module



## Contents

- 1 Introduction
- 2 General information
- 3 Summary of Functions
- 4 Scope of supply
- 5 Hook-Up
- 6 Connectors
- 7 Connection analog operation
- 8 Connection digital op with decoder
- 9 Connection decoder with LGB PCB
- 10 Product description
- 11 Technical data
- 12 Warranty, Service, Support
- 13 Hotline
- 14 Documents / Resources
  - 14.1 References
- 15 Related Posts

## Introduction

Dear customer, we strongly recommend that you read these manuals and the warning notes thoroughly before installing and operating your device. The device is not a toy (15+).

**NOTE:** Make sure that the outputs are set to appropriate value before hooking up any other device. We can't be responsible For any damage if this is disregarded.

## General information

We recommend studying this manual thoroughly before installing and operating your new device. Place the decoder in a protected location. The unit must not be exposed to moisture.

**NOTE:** Some functions are only available with the latest firmware. Please make sure that your device is programmed with the latest firmware.

## Summary of Functions

### DC/AC/DCC operation

2 engine outputs (each 0,8A)

2 contact inputs

2 function outputs Poti for speed Poti for drive time Screw drives for stable mounting

### Scope of supply

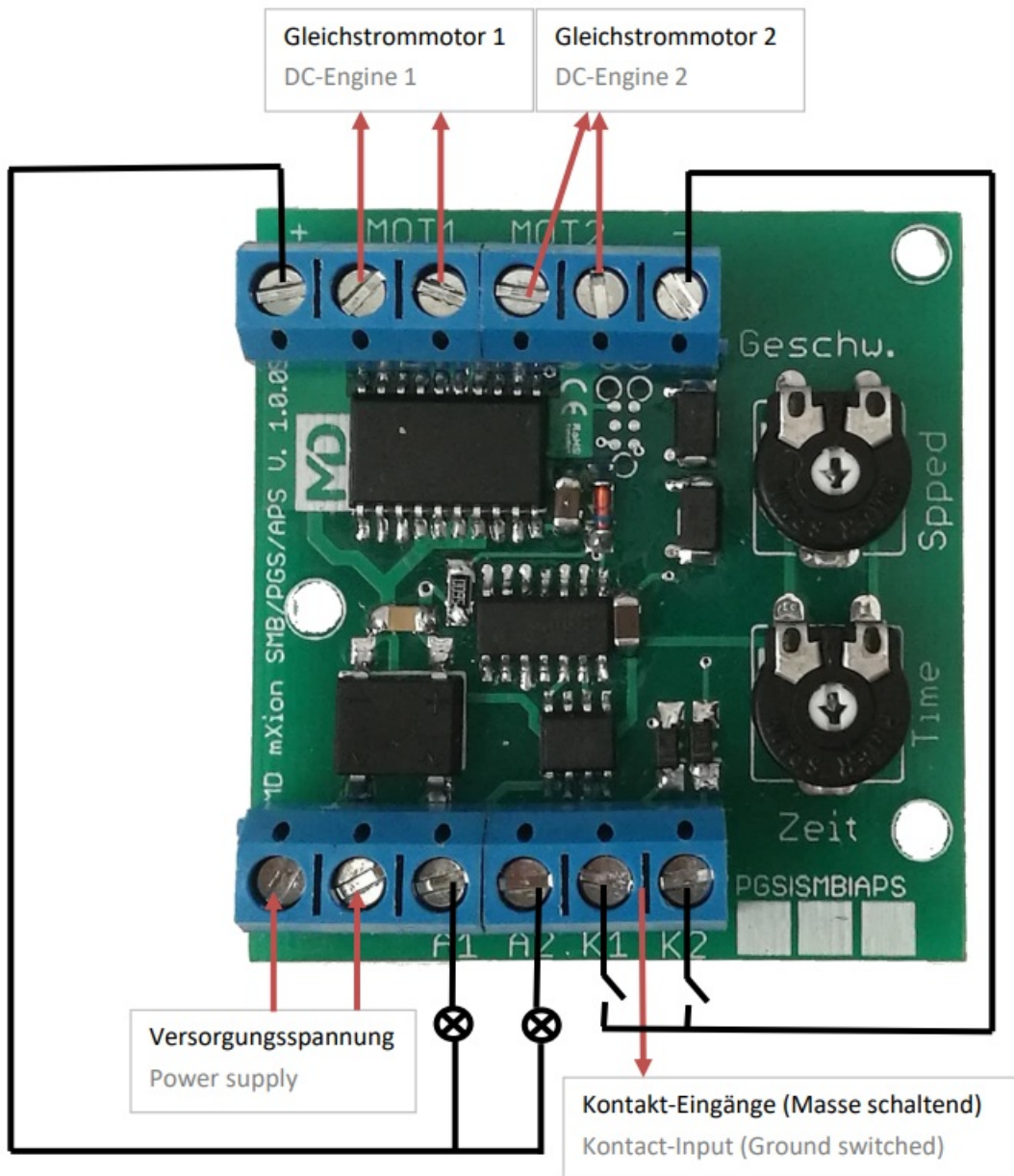
Manual

mXion PGS

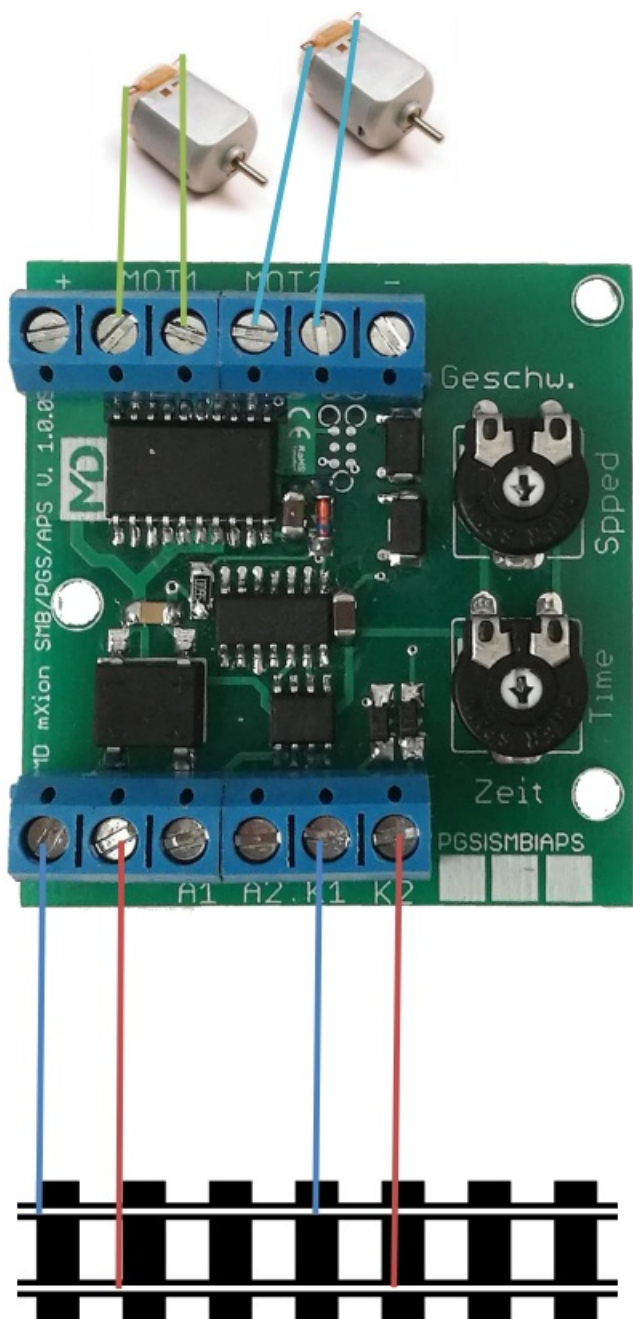
### Hook-Up

Install your device in compliance with the connecting diagrams in this manual. The device is protected against shorts and excessive loads. However, in case of a connection error e.g. a short this safety feature can't work and the device will be destroyed subsequently. Make sure that there is no short circuit caused by the mounting screws or metal.

### Connectors

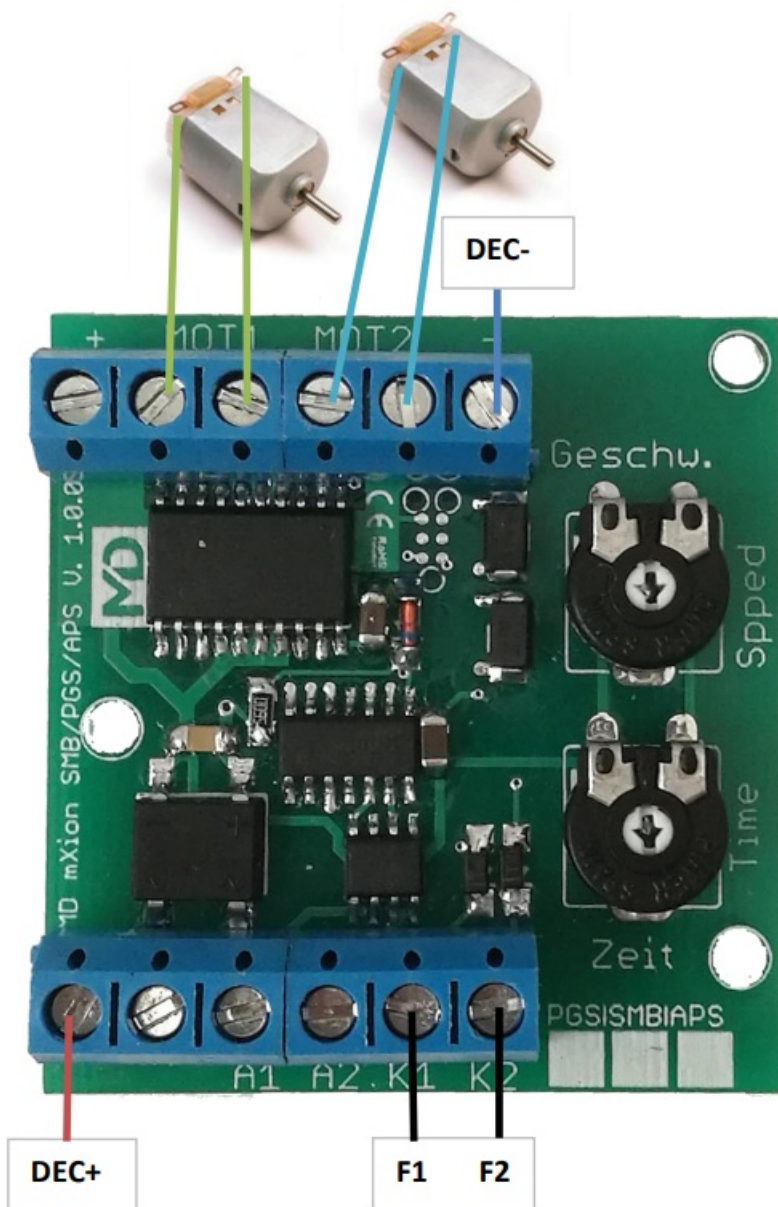


Connection analog operation



## Connection digital op with decoder

K1/K2 connect to function output.  
Supply voltage to DEC+ and DEC-.



### Connection decoder with LGB PCB

When using the orig. LGB pantograph control the switch boards can continue to be used sensibly become. With the direct connection of the motors (page 10) the shutdown only takes place over time. In this example the switch-off occurs through the end contacts. The pcb must be completely new designed and the motor must be connected in a schematic new way.

**Schalter view in sleep pos. if no one is pressed!**



**Power supply:** 7-25V DC/DCC 5-18V AC

**Current:** 10mA (without functions)

**Maximum function current:** A1/ A2 each 1A Mot1/Mot2 each 0,8A

**Temperature range:** -20 up to 80°C

**Dimensions L \*B\*H (cm):** 4.9\*4.7\*2

**NOTE:** In case you intend to utilize this device below freezing temperatures, make sure it was stored in a heated environment before operation to prevent the generation of condensed water. During operation is sufficient to prevent condensed water.

## Warranty, Service, Support

micron-dynamics warrants this product against defects in materials and workmanship for one year from the original date of purchase. Other countries might have different legal warranty situations. Normal wear and tear, consumer modifications as well as improper use or installation are not covered. Peripheral component damage is not covered by this warranty. Valid warrants claims will be serviced without charge within the warranty period. For warranty service please return the product to the manufacturer. Return shipping charges are not covered by micron-dynamics. Please include your proof of purchase with the returned good. Please check our website for up to date brochures, product information, documentation and software updates. Software updates you can do with our updater or you can send us the product, we update for you free.

## Hotline

For technical support and schematics for application examples contact:

**micron-dynamics**

[info@micron-dynamics.de](mailto:info@micron-dynamics.de)

[service@micron-dynamics.de](mailto:service@micron-dynamics.de)

[www.micron-dynamics.de](http://www.micron-dynamics.de)

<https://www.youtube.com/@micron-dynamics>



# mXion

## Documents / Resources



[mXion PGS Pantograph Control Module](#) [pdf] User Manual  
PGS Pantograph Control Module, PGS, Pantograph Control Module, Control Module, Module

## References

- [▢ Top Fahrradbekleidung für Damen & Herren - Ride your Style](#)
- [⊗ micron-dynamics](#)
- [⊗ micron-dynamics](#)