



**B0C8L8TP5V HIT  
Hydrostatic  
Inflatable PFD  
with Tether Point**



## MUSTANG SURVIVAL B0C8L8TP5V HIT Hydrostatic Inflatable PFD with Tether Point Instruction Manual

[Home](#) » [MUSTANG SURVIVAL](#) » MUSTANG SURVIVAL B0C8L8TP5V HIT Hydrostatic Inflatable PFD with Tether Point Instruction Manual 

### Contents

- [1 MUSTANG SURVIVAL B0C8L8TP5V HIT Hydrostatic Inflatable PFD with Tether Point](#)
- [2 Product Usage Instructions](#)
- [3 Before you start](#)
- [4 General inspection](#)
- [5 Inspection of lung and oral valve](#)
- [6 Fire Mechanism Inspection](#)
- [7 Inspection and rearming automatic valve](#)
- [8 Inspection of CO2 cylinder](#)
- [9 Refit CO2 cylinder](#)
- [10 Documents / Resources](#)
  - [10.1 References](#)



**MUSTANG SURVIVAL B0C8L8TP5V HIT Hydrostatic Inflatable PFD with Tether Point**



### Specifications:

- **Product:** Inflatable PFD's
- **Intended Use:** Recreational use only
- **Inspection Frequency:** Annual
- **Repair Policy:** Trained service personnel only

### Product Usage Instructions

#### General Inspection

Perform external and internal inspections as follows:

#### 1. External Inspection:

- Check the cover for wear or damage.
- Ensure closures are working.
- Inspect straps, stitching, and buckles.
- Verify the safety lanyard attachment ring.

#### 2. Internal Inspection:

- Check retro-reflective tape, lifting becket, and whistle.
- Inspect the oral inflation tube and emergency light (if fitted).

#### Inspection of Lung and Oral Valve

1. Check lung for abrasion and wear.
2. Inflate the lung using the oral inflation tube and leave for 12 hours.
3. Check the pressure and inspect for damage after 12 hours.

4. Deflate the lung carefully using the oral inflation valve.

### **Fire Mechanism Inspection**

Follow manufacturer-specific instructions for fire mechanism inspection.

### **Inspection and Maintenance of Automatic Valve**

For automatic inflation models, replace the activation mechanism if necessary conditions are met.

### **FAQ:**

- **Q: Can I repair the PFD myself if an issue is found during the inspection?**

A: No, all repairs must be conducted by trained service personnel to ensure safety.

- **Q: How often should I inspect my PFD?**

A: Annual self-inspections are recommended for the recreational use of PFDs.

### **Before you start**

1. Carefully read over all the instructions below
2. Ensure you have spare parts for your PFD. (Check out our 'Quick Guide to Lifejacket Self-Servicing Parts' or 'Spares & Accessories' on our website). On inflator heads that use a green indicator clip to retain the manual firing lever, the clip will be broken during inspection. Ensure you have spare clips before you begin the inspection. You may also need to replace the CO2 cylinder and the cartridge on automatic models. All these parts can be purchased online through a Burke retailer or service agent.
3. Ensure you have access to accurate kitchen or letter scales for checking the weight of the CO2 cylinder.
4. Print a copy of the Inflatable PFD self-inspection certificate for every PFD being inspected
5. Record on the certificate the PFD serial/PI number, model no., inflator head brand/type (manual or automatic), and last service date.
  1. Record each inspection step as it is completed with a Pass, Fail, or NA in the checkboxes provided on the certificate. If the PFD or a component fails any inspection steps 1 through 6, the PFD or faulty component must be replaced before using the PFD, alternatively, send the PFD to an accredited service agent for further testing.

Under no circumstances must you attempt any repairs, these must only be conducted by trained service personnel.

### **General inspection**

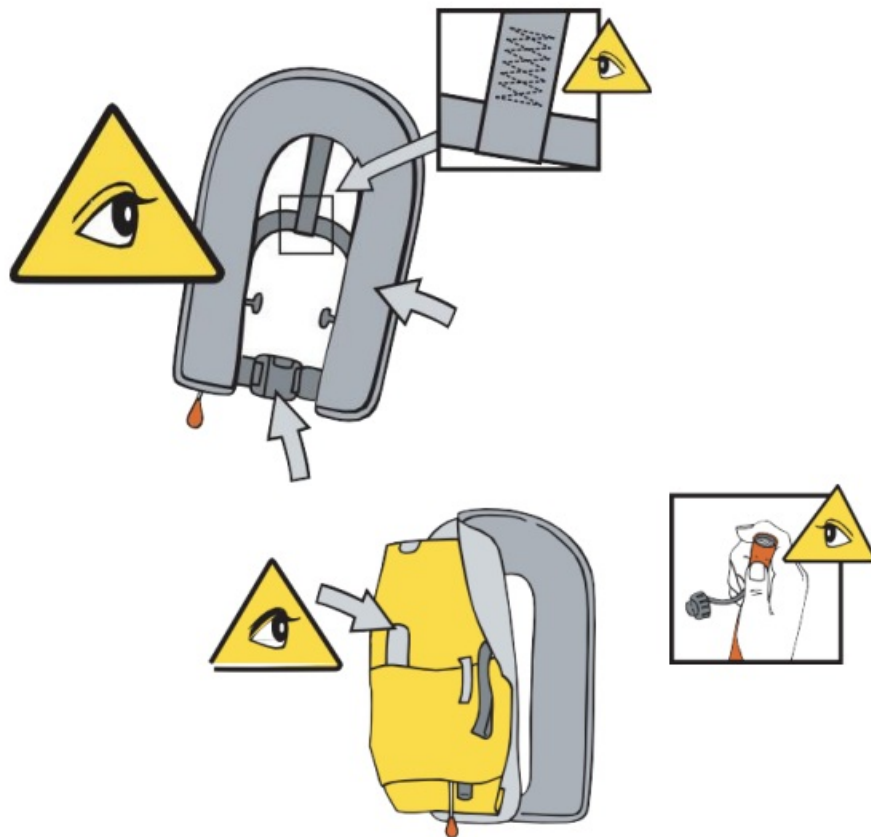
#### **1. External Inspection – Check**

- The cover has no excessive wear or visible damage.
- All cover closures (hook and loop, zippers, etc) are serviceable.
- There is no visible damage or wear to any straps or stitching.
- All fastenings, adjustments, and buckles are operating correctly.
- Safety lanyard attachment ring (when fitted) is not worn or damaged.

#### **2. Internal Inspection – Open the cover and check that**

- retro-reflective tape is firmly attached and not damaged.

- Lifting becket webbing and stitching are not worn or damaged.
- Whistle operation (blow to check operation) and that whistle is securely attached.
- The oral inflation tube has no visible signs of damage.
- If fitted with an emergency light check the lights expiry date (replace if expired).

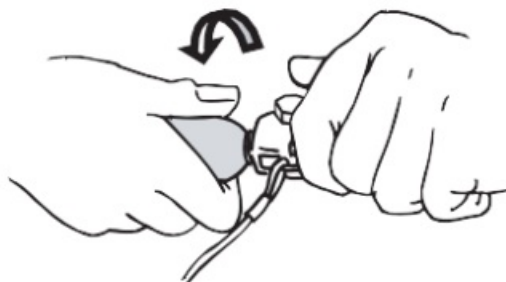


### Inspection of lung and oral valve

1. Check lung has no signs of excessive abrasion or wear.

Pay extra attention to the folds and areas around inflation systems

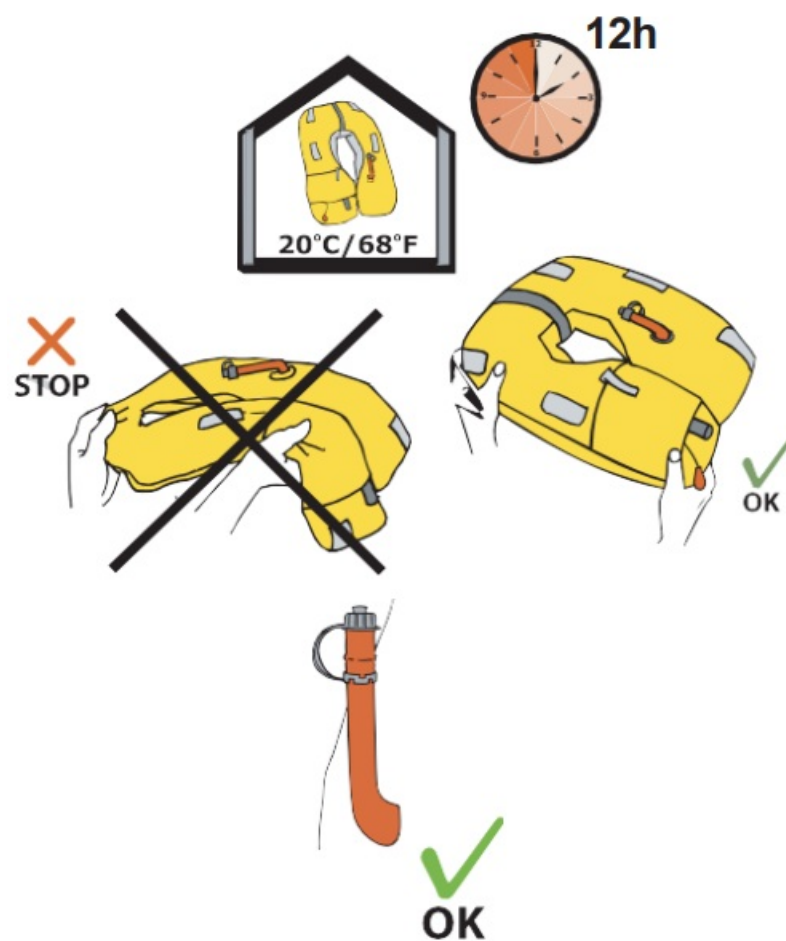
2. Remove the Co2 cylinder from the inflator head by unscrewing the cylinder anti-clockwise.



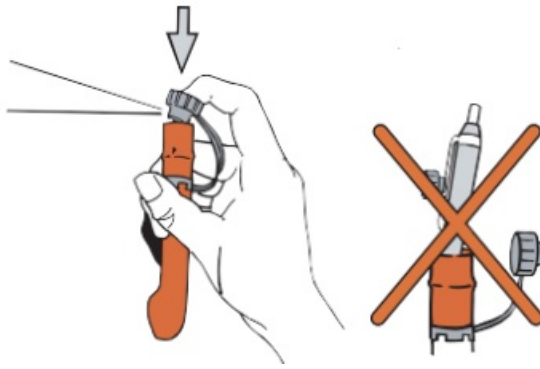
- Inflate the lung using the oral inflation tube.



- Leave the lung inflated with the oral tube cap off in a room with a stable temperature of around 20°C for at least 12 hours (temperature changes will affect lung pressure)
- After 12 hours of check, there is no loss of pressure and no visible damage to the lung. If the lung is damaged or pressure falls the PFD must be replaced or sent to an accredited service station for further tests. Under no circumstances should you attempt to repair the PFD yourself

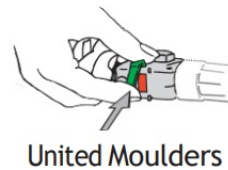
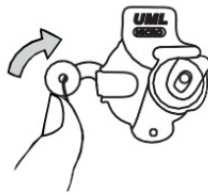
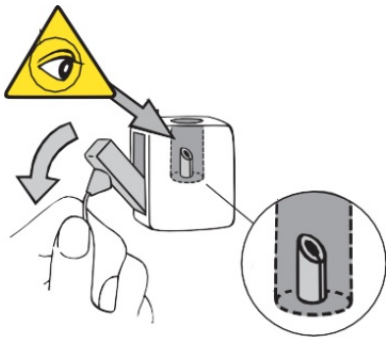


3. Deflate inflatable lung checking operation of oral inflation valve. Only deflate the lung by inverting the oral tube cap and gently pressing the top of the inverted cap down into the tube.
  - Do not put anything other than the inverted cap into the oral inflation tube, foreign objects may damage the oral valve.
  - When the lung is fully deflated fit the oral tube cap back into its normal position.



## Fire Mechanism Inspection

1. Inspect the firing mechanism for damage and corrosion.
  2. With the CO2 cylinder removed pull the manual firing lanyard down sharply to ensure the lever moves freely and that the piercing cutter becomes proud of the sealing washer at the base of the upper threaded section. On inflator heads where the lever is secured by a green indicator clip, this action will break the indicator clip. If the lever moves freely and the piercing cutter becomes proud fold the lever back up into the normal position.
  3. On inflator heads that use an indicator clip to secure the lever, fit a new green indicator clip now.
- If the manual inflator does not operate properly the PFD must be replaced or sent to an accredited service agent for further action.



United Molders

Fit new indicator clip ref 3.2

## Inspection and rearming automatic valve

The automatic activation mechanism (Cartridge as applicable) must be replaced if it has been immersed in water, is past its expiry date, or if the expiry date falls before the PFD's next scheduled service.

Do not refit a Co2 cylinder unless the automatic valve is correctly armed.

1. For models using United Molders automatic inflators fitted with water sensing cartridges (Fig 1.)

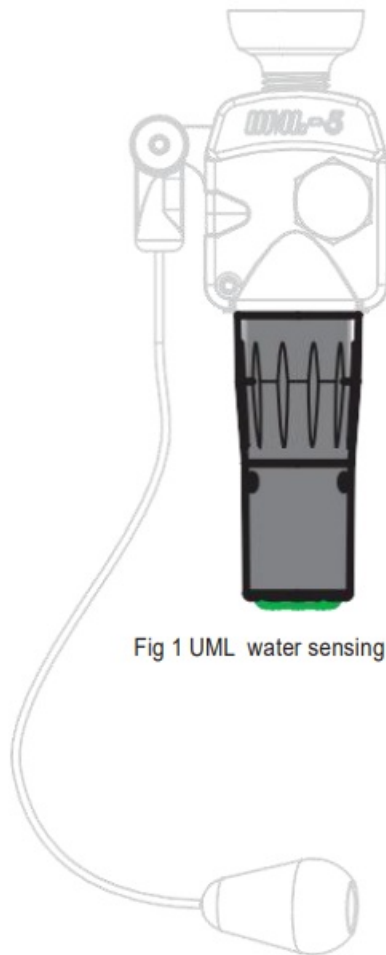


Fig 1 UML water sensing cartridge

- Unscrew the cartridge anti-clockwise.
- Check that the cartridge is clean and completely dry
- Record the expiry/replacement by dates printed on the cartridge on the service inspection certificate and check the green indicator status disc at base of cartridge is visible. Discard and replace with a new cartridge if expiry/replacement date falls before the next service due date or the green status indicator disc at the base of a cartridge is not visible

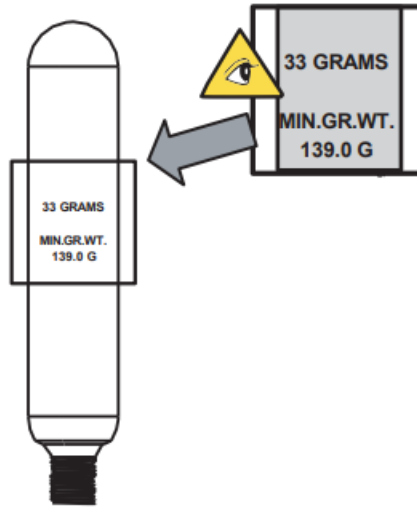


- Re-arm by screwing the cartridge clockwise onto the base of the inflator head. Tighten firmly by light hand force only (use no tools) Ensure the thread is not obstructed and that green automatic status indicators are visible.

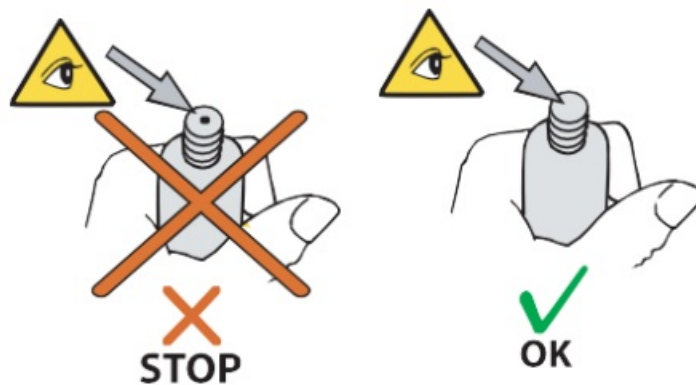
## Inspection of CO2 cylinder

1. Check that the size/type of CO2 cylinder is correct for the PFD

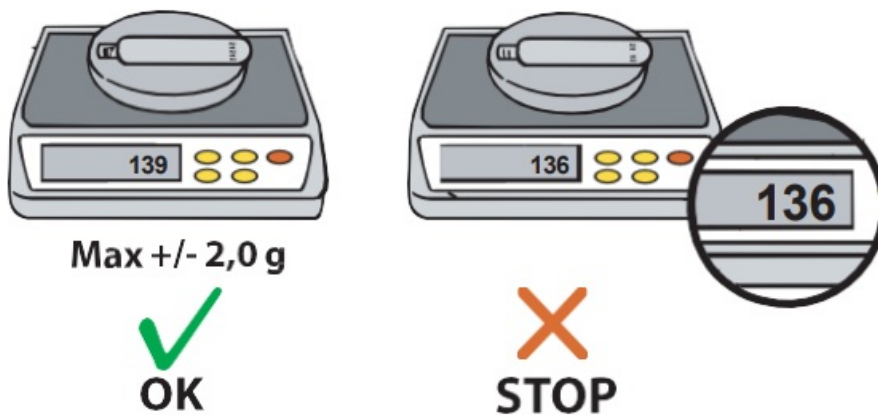
The Cylinder size is displayed on the cylinder as well as on the PFD lung adjacent to the CO2 inflator head.



2. Check that the CO2 cylinder is not damaged, is free from rust and corrosion, and has not been pierced.  
Replace any cylinder that is pierced, damaged or exhibiting any signs of rust or corrosion.



3. If the cylinder is serviceable weigh the cylinder on kitchen or letter scales. The cylinder weight should correspond to MIN.GR.WT engraved on cylinder  $\pm 2$  g. Record MIN.GR.WT and actual weight of cylinder on the inspection certificate.



If the cylinder weight is incorrect or the cylinder is in any way defective it must be replaced (Any replacement cylinder should be checked in the same manner)

**Dispose of scrapped CO2 cylinders immediately.**

## Refit CO2 cylinder

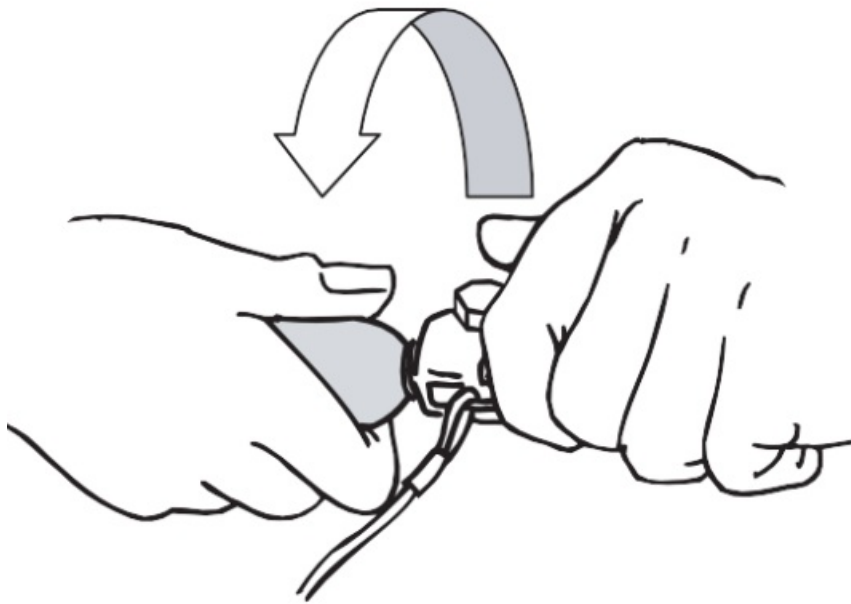
1. Confirm

- manual inflator mechanism has passed inspection step 3
  - On automatic models, the automatic valve is armed and has passed inspection step 4.
  - the CO2 cylinder being fitted has passed inspection step 5
2. To refit the cylinder hold the inflator head firmly and screw the CO2 cylinder clockwise into the top of the inflator head. Hand tighten until firm.

Do not use any tools or undue force

**Note:**

For the piercing cutter to work correctly the CO2 cylinder (and automatic inflation mechanism on automatic models) must be firmly hand-tightened onto the CO2 inflator head.



**Record Service Inspection on PFD**

If PFD has passed all applicable self-inspection steps 1 through 6 above Sign and date in permanent laundry marker the service inspection history label located on the inflator head side of the lung. For a Self-inspection prefix the service date by the letters SI to indicate 'self-inspection'. The date format should be kept consistent across the PFD service inspection history.


**Repack PFD**

- Repack PFD according to instructions provided in your PFD owner's manual.
- Ensure that the manual inflation pulls lanyard and knob are not tangled and that it is accessible when PFD is donned.

**Certify the PFD self-inspection certificate.**

- Sign the self-inspection certificate and record the date the self-inspection was completed.
- It is also recommended that the next inspection due date is noted on the certificate.
- The completed self-inspection certificate should be kept in the boat's safety equipment log for future reference.

**Documents / Resources**

	<p><a href="#">MUSTANG SURVIVAL B0C8L8TP5V HIT Hydrostatic Inflatable PFD with Tether Point</a> [pdf] I</p> <p>nstruction Manual</p> <p>B0C8L8TP5V HIT Hydrostatic Inflatable PFD with Tether Point, B0C8L8TP5V, HIT Hydrostatic I nflatable PFD with Tether Point, Hydrostatic Inflatable PFD with Tether Point, Inflatable PFD with Tether Point, Tether Point</p>
--	--

## References

- [🔴 ARIP - Professional Unlimited Web Hosting - We provide solid web hosting & domain registration services!](#)
- [User Manual](#)

[Manuals+](#), [Privacy Policy](#)

This website is an independent publication and is neither affiliated with nor endorsed by any of the trademark owners. The "Bluetooth®" word mark and logos are registered trademarks owned by Bluetooth SIG, Inc. The "Wi-Fi®" word mark and logos are registered trademarks owned by the Wi-Fi Alliance. Any use of these marks on this website does not imply any affiliation with or endorsement.