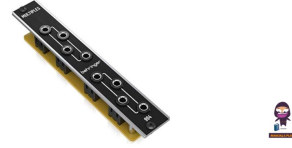


Music Tribe 994 MULTIPLES Legendary Analog Dual Multiples Module



Music Tribe 994 MULTIPLES Legendary Analog Dual Multiples Module User Guide

[Home](#) » [Music Tribe](#) » Music Tribe 994 MULTIPLES Legendary Analog Dual Multiples Module User Guide 

Contents

- [1 Music Tribe 994 MULTIPLES Legendary Analog Dual Multiples Module](#)
- [2 Product Information](#)
- [3 Product Usage Instructions](#)
- [4 Safety Instruction](#)
- [5 Installation](#)
- [6 LIMITED WARRANTY](#)
- [7 Specifications](#)
- [8 FAQ](#)
- [9 Documents / Resources](#)
 - [9.1 References](#)



Music Tribe 994 MULTIPLES Legendary Analog Dual Multiples Module



Product Information

Specifications

- **Product Name:** 994 MULTIPLES
- **Type:** Analog Dual Multiples Module for Eurorack
- **Version:** 2.0

Product Usage Instructions

Safety Instructions

1. Please read and follow all instructions.
2. Keep the apparatus away from water, except for outdoor products.
3. Clean only with a dry cloth.
4. Do not block any ventilation openings. Install in accordance with the manufacturer's instructions.
5. Do not install near any heat sources such as radiators, heat registers, stoves or other apparatus (including amplifiers) that produce heat.
6. Use only attachments/accessories specified by the manufacturer.
7. Use only specified carts, stands, tripods, brackets, or tables. Use caution to prevent tip-over when moving the cart/apparatus combination.
8. Avoid installing in confined spaces like bookcases.
9. Do not place near naked flame sources, such as lighted candles.

Installation

- Connect an input signal to one of the 4-jack sections, then send up to 3 copies of the signal to other devices.
- The necessary screws are included with the module for mounting in a Eurorack case. Connect the power cable before mounting.

- Depending on the rack case, there may be a series of fixed holes spaced 2 HP apart along the length of the case, or a track that allows individual threaded plates to slide along the length of the case. The free-moving threaded plates allow precise positioning of the module, but each plate should be positioned in the approximate relation to the mounting holes in your module before attaching the screws.
- Hold the module against the Eurorack rails so that each of the mounting holes are aligned with a threaded rail or threaded plate. Attach the screws part way to start, which will allow small adjustments to the positioning while you get them all aligned. After the final position has been established, tighten the screws down.

Safety Instruction

1. Please read and follow all instructions.
2. Keep the apparatus away from water, except for outdoor products..
3. Clean only with a dry cloth.
4. Do not block any ventilation openings. Install in accordance with the manufacturer's instructions.
5. Do not install near any heat sources such as radiators, heat registers, stoves or other apparatus (including amplifiers) that produce heat.
6. Use only attachments/accessories specified by the manufacturer
7. Use only specified carts, stands, tripods, brackets, or tables. Use caution to prevent tip-over when moving the cart/apparatus combination.
8. Avoid installing in confined spaces like bookcases.
9. Do not place near naked flame sources, such as lighted candles.
10. Operating temperature range 5° to 45°C (41° to 113°F).

Signal Connections

Connect an input signal to one of the 4-jack sections, then send up to 3 copies of the signal to other devices.

Installation

The necessary screws are included with the module for mounting in a Eurorack case. Connect the power cable before mounting. Depending on the rack case, there may be a series of fixed holes spaced 2 HP apart along the length of the case, or a track that allows individual threaded plates to slide along the length of the case. The free-moving threaded plates allow precise positioning of the module, but each plate should be positioned in the approximate relation to the mounting holes in your module before attaching the screws. Hold the module against the Eurorack rails so that each of the mounting holes are aligned with a threaded rail or threaded plate. Attach the screws part way to start, which will allow small adjustments to the positioning while you get them all aligned. After the final position has been established, tighten the screws down.

LEGAL DISCLAIMER

Music Tribe accepts no liability for any loss which may be suffered by any person who relies either wholly or in part upon any description, photograph, or statement contained herein. Technical specifications, appearances and other information are subject to change without notice. All trademarks are the property of their respective owners. Midas, Klark Teknik, Lab Gruppen, Lake, Tannoy, Turbosound, TC Electronic, TC Helicon, Behringer, Bugera, Aston Microphones and Coolaudio are trademarks or registered trademarks of Music Tribe Global Brands Ltd. © Music Tribe Global Brands Ltd. 2024 All rights reserved.

LIMITED WARRANTY

For the applicable warranty terms and conditions and additional information regarding Music Tribe's Limited Warranty, please see complete details online at community.musictribe.com/support.

Specifications

Signal Connections

- Type 8 x 3.5 mm TS mono jacks, unbalanced
- Arrangement 2 sets of 4 parallel jacks, passive
- Compatibility CV and audio signals

Physical

- Dimensions 23 x 20 x 129 mm (0.9 x 0.8 x 5.1")
- Rack units 4 HP
- Weight 0.05 kg (0.11 lbs)

FEDERAL COMMUNICATIONS COMMISSION COMPLIANCE INFORMATION

- **Responsible Party Name:** Music Tribe Commercial NV Inc.
- **Address:** 122 E. 42nd St.1, 8th Floor NY, NY 10168, United States
- **Email Address:** legal@musictribe.com

994 MULTIPLES

This equipment has been tested and found to comply with the limits for a Class B digital device, pursuant to part 15 of the FCC Rules. These limits are designed to provide reasonable protection against harmful interference in a residential installation. This equipment generates, uses and can radiate radio frequency energy and, if not installed and used in accordance with the instructions, may cause harmful interference to radio communications. However, there is no guarantee that interference will not occur in a particular installation.

If this equipment does cause harmful interference to radio or television reception, which can be determined by turning the equipment off and on, the user is encouraged to try to correct the interference by one or more of the following measures:

- Reorient or relocate the receiving antenna.
- Increase the separation between the equipment and receiver.
- Connect the equipment into an outlet on a circuit different from that to which the receiver is connected.
- Consult the dealer or an experienced radio/TV technician for help.

This equipment complies with Part 15 of the FCC rules. Operation is subject to the following two conditions:

1. this device may not cause harmful interference, and
2. this device must accept any interference received, including interference that may cause undesired operation.

Important information:

Changes or modifications to the equipment not expressly approved by Music Tribe can void the user's authority to use the equipment. Hereby, Music Tribe declares that this product is in compliance with Directive 2014/30/EU, Directive 2011/65/EU and Amendment 2015/863/EU, Directive 2012/19/EU, Regulation 519/2012 REACH SVHC and Directive 1907/2006/EC.

- Full text of EU DoC is available at <https://community.musictribe.com/>
- **EU Representative:** Music Tribe Brands DK A/S
- **Address:** Gammel Strand 44, DK-1202 København K, Denmark UK
- **Representative:** Music Tribe Brands UK Ltd.
- **Address:** 8th Floor, 20 Farringdon Street London EC4A 4AB, United Kingdom

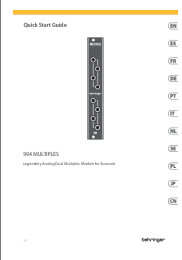
Correct disposal of this product: This symbol indicates that this product must not be disposed of with household waste, according to the WEEE Directive (2012/19/EU) and your national law. This product should be taken to a collection center licensed for the recycling of waste electrical and electronic equipment (EEE). The mishandling of this type of waste could have a possible negative impact on the environment and human health due to potentially hazardous substances that are generally associated with EEE. At the same time, your cooperation in the correct disposal of this product will contribute to the efficient use of natural resources. For more information about where you can take your waste equipment for recycling, please contact your local city office, or your household waste collection service.

FAQ




Q: Where can I find warranty information?

A: For applicable warranty terms and conditions and additional information regarding Music Tribe's Limited Warranty, please see complete details online at community.musictribe.com/support.

Documents / Resources

	<p>Music Tribe 994 MULTIPLES Legendary Analog Dual Multiples Module [pdf] User Guide 994 MULTIPLES Legendary Analog Dual Multiples Module, 994 MULTIPLES, Legendary Analog Dual Multiples Module, Analog Dual Multiples Module, Dual Multiples Module, Multiples Module</p>
---	--

References

-  [Music Tribe](#)
-  [Music Tribe](#)
-  [Music Tribe](#)
- [User Manual](#)

[Manuals+](#), [Privacy Policy](#)

This website is an independent publication and is neither affiliated with nor endorsed by any of the trademark owners. The "Bluetooth®" word mark and logos are registered trademarks owned by Bluetooth SIG, Inc. The "Wi-Fi®" word mark and logos are registered trademarks owned by the Wi-Fi Alliance. Any use of these marks on this website does not imply any affiliation with or endorsement.