




# MUNBYN S12 Label Maker User Manual

[Home](#) » [MUNBYN](#) » MUNBYN S12 Label Maker User Manual 

## Contents

- [1 MUNBYN S12 Label Maker](#)
- [2 Packing Introduction](#)
- [3 Product Description](#)
- [4 Specification](#)
- [5 Operation](#)
- [6 Power Light Status](#)
- [7 Quick Connection](#)
- [8 FAQ](#)
- [9 Support](#)
- [10 CONTACT](#)
- [11 Documents / Resources](#)
  - [11.1 References](#)

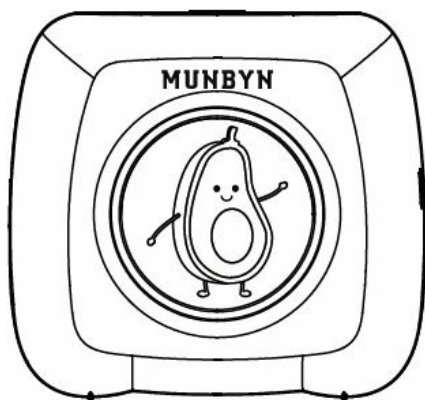
# MUNBYN

**MUNBYN S12 Label Maker**

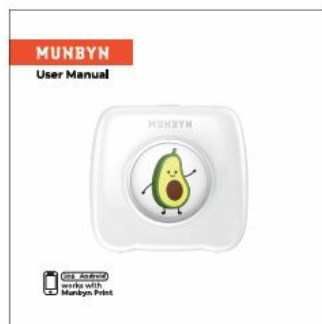


## Packing Introduction

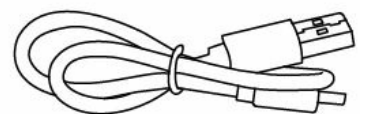
### What's in the box?



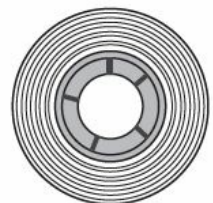
- Label Maker



- User Manual



- USB Cable



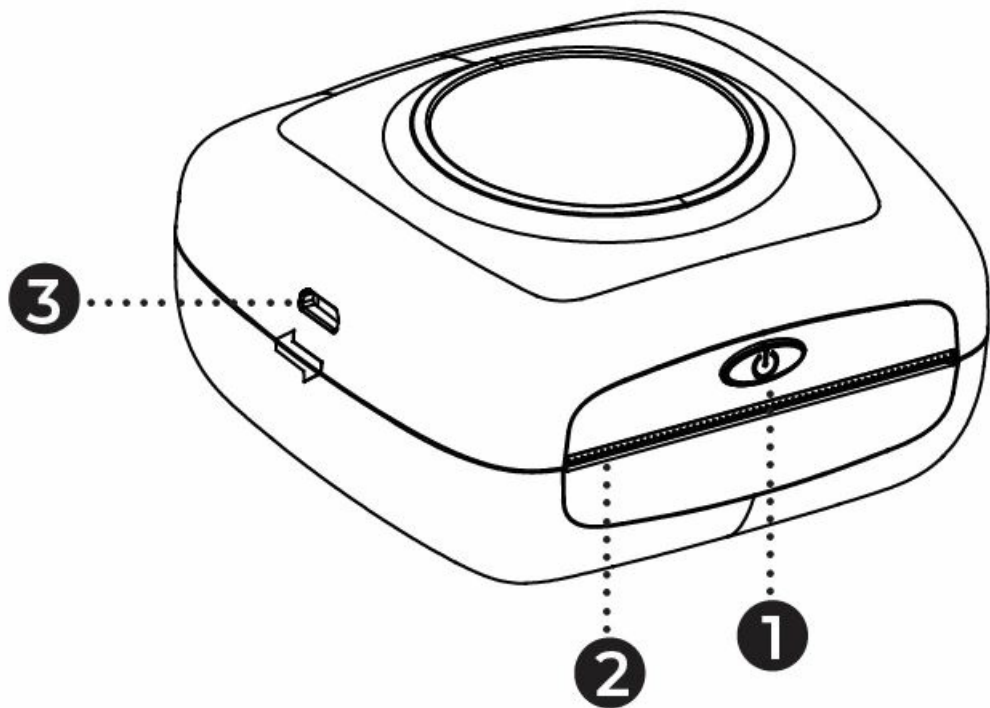
- Label \*1

Some stickers will also be included in your package, please feel free to place it on your label maker.

## Product Description

1. **Power button:** Press it for three seconds to turn on/off the printer.

- 2. **Tearing Blade:** Tearing paper or label with the blade.
- 3. **USB interface:** Connect it to a USB cable to charge.



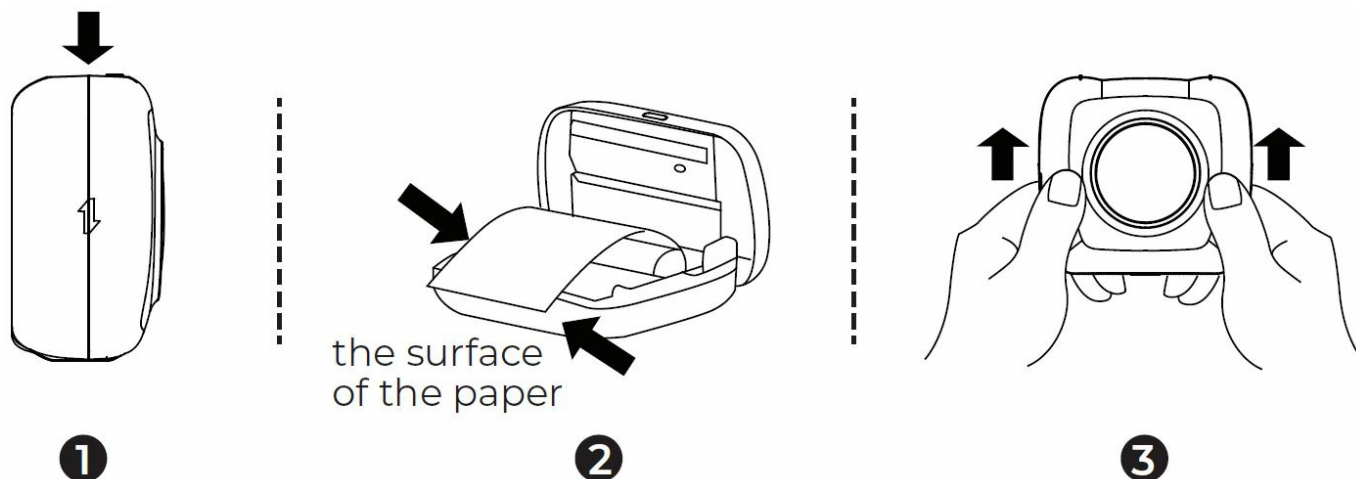
Specification

Printing method	Thermal Direct
Resolution	203dpi, 8dots/mm
Print speed	10mm~15mm/s
Interface	USB+Bluetooth
Lithium Battery	1000mah
Power Adaptor (Output)	5V-2A
Label width	58mm Max
Working Temperature(°C)	0°C 50°C
Working Humidity	10~90 Non-condensing
Storage Temperature(°C)	-20 70°C
Storage Humidity	5~95 Non-condensing
Printing life	50km
Operating system	Android/iOS

## Operation

### Paper Setup

1. **Open the cover:** According to picture ①, push the upper cover down to open the cover.
2. **Consumables:** According to picture ②, the thermal surface of the paper should face the thermal head.
3. **Close the cover:** After putting in the consumables, push the upper cover up as shown in the picture to close the cover.



### Power Light Status

Indicator light	Status	Situation
Green	Light	Fully charged/Normal use/Bluetooth connected
Red	Light	Cover opened/Out of paper/Charging/printer head overheating
Red	Flash Slowly	Low power

### Functions of The Power Button

Button	Operation method	Functions
Power button	Double click	Print self-test paper
Power button	Press for three seconds	Power on/power off

### Quick Connection

1. Search “Munbyn Print” on the App Store or Google Play to get the app.



2. Or please scan the QR code to download the app.



## FAQ

- **Q1.** Why cannot the printer print correctly after loading the label?
- **A1.** Please connect the printer to the app, and print a label to rectify.
- **Q2.** Why do I need to open the geographic location and address book when using the App for Android?
- **A2.** It is Google's rule. Our App needs to abide by this rule on the Google platform. But please rest assured that we will firmly protect user privacy.
- **Q3.** Why can't the printer connect to Bluetooth and print?
- **A3.** You first need to search for "Munbyn Print" through Google Play or scan the QR code to download the App, then open the App to connect to Bluetooth.
- **Q4.** Why does the App crash?
- **A4.** Please uninstall and reinstall the latest App.
- **Q5.** Why is the print not clear?
- **A5.** Many factors affect print clarity. First, please make sure that the battery is full. Second, adjust the font size,

font type and concentration. If the above methods do not work, wipe the print head with an alcohol swab.

- **Q6.** Why is the printing response time long sometimes?
- **A6.** The reason is that the Bluetooth transmission speed of the cell phone is slow. Please be patient.

## Support

- MUNBYN provides an 18-month warranty and lifetime free service.
- If you encounter any issues with the product, please contact the MUNBYN team to promptly receive troubleshooting tips or a replacement.


## CONTACT

- Email: [support@munbyn.com](mailto:support@munbyn.com) (24-7 online support)
- Website: [www.munbyn.com](http://www.munbyn.com) (how-to videos)
- WhatsApp: +8617817881067
- Phone: +14034771911



---

## Documents / Resources

	<a href="#">MUNBYN S12 Label Maker</a> [pdf] User Manual S12 Label Maker, S12, Label Maker, Maker
---	--

## References

- [User Manual](#)