


MUNBYN

Logistics Label Printer

USER GUIDE



MUNBYN ITPP941 Logistic Label Printer User Guide

[Home](#) » [MUNBYN](#) » MUNBYN ITPP941 Logistic Label Printer User Guide 

MUNBYN

Logistics Label Printer
USER GUIDE



MUNBYN

More Choice

For Your Growing Business

☐ White

☐ Gray

☐ Green

☐ Pink

Contents

- 1 Product Introduction
 - 1.1 What's in the package?
 - 1.2 Printer Overview
- 2 Set Up The Printer
 - 2.1 Quick printer connection
 - 2.2 Label setup
 - 2.3 Driver installation
 - 2.3.1 Windows Driver Installation
 - 2.3.2 Mac Driver Installation
- 3 Pro Tips
- 4 FAQ
- 5 LED Status
- 6 Feeder Button Instruction
- 7 Specification
- 8 Safety Notices
- 9 Tech Support
 - 9.1 Documents / Resources
 - 9.2 Related Posts

Product Introduction

What's in the package?

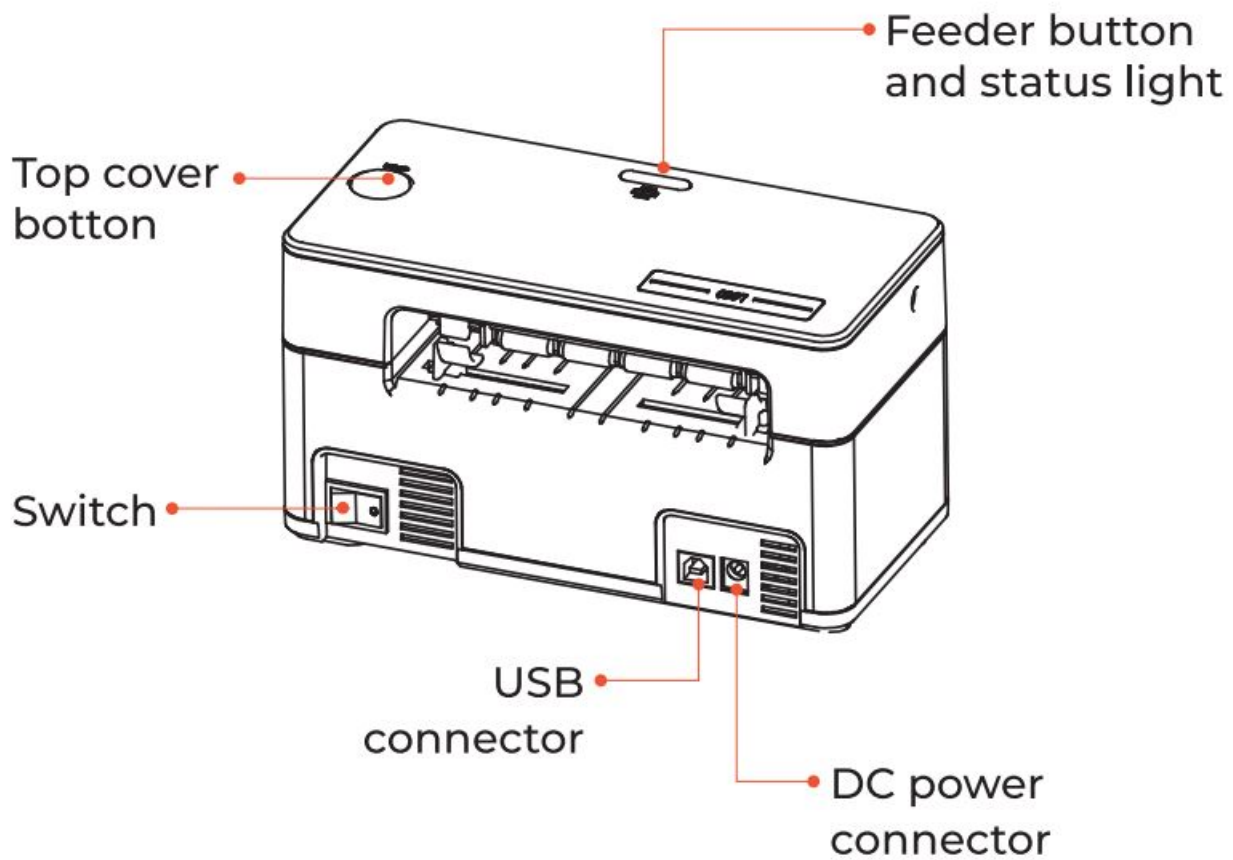


1. Printer

2. USB Cable
3. Adapter
4. Power Cord
5. Quick tips
6. Labels
7. User Manual

- If contents are missing or damaged, please contact us

Printer Overview



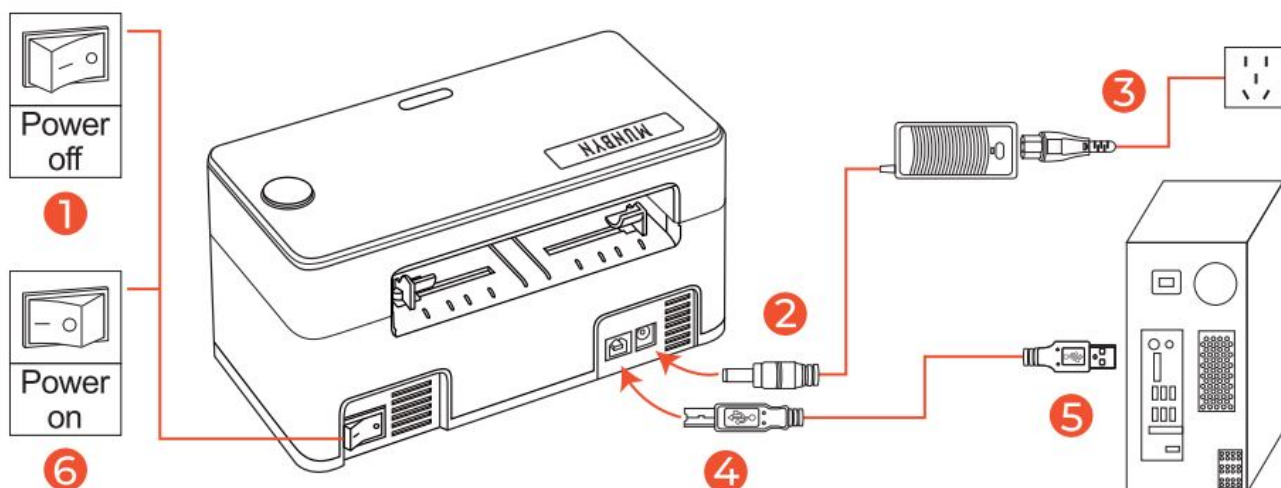
Set Up The Printer

Recommended:

Watch the short setup video at:

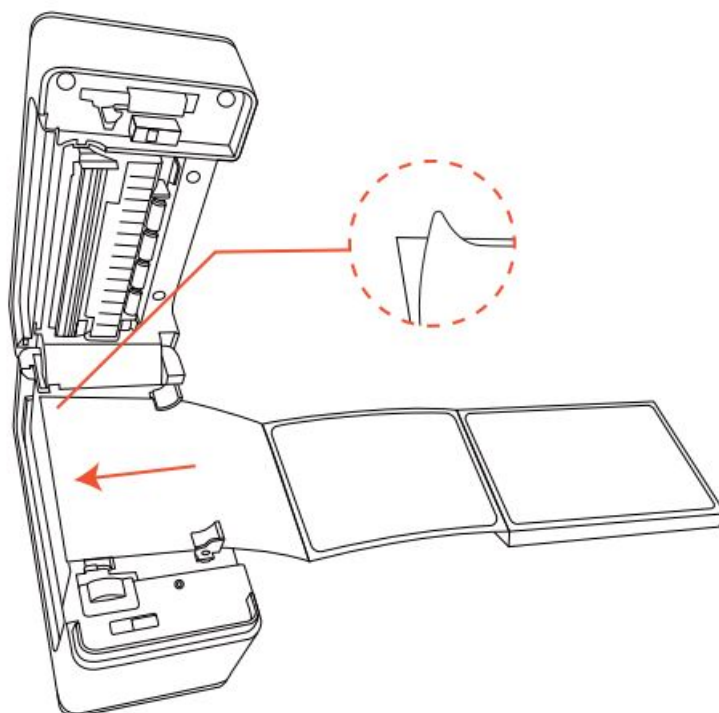
www.munbyn.biz/unboxing

Quick printer connection



- Please follow the sequence of the above picture to operate

Label setup



Automatic label identification:

- Load no less than 4 consecutive labels into the printer.
- After the paper is stable, press and hold feeder button, until you hear a beep.

- Then, the printer will automatically label identification.

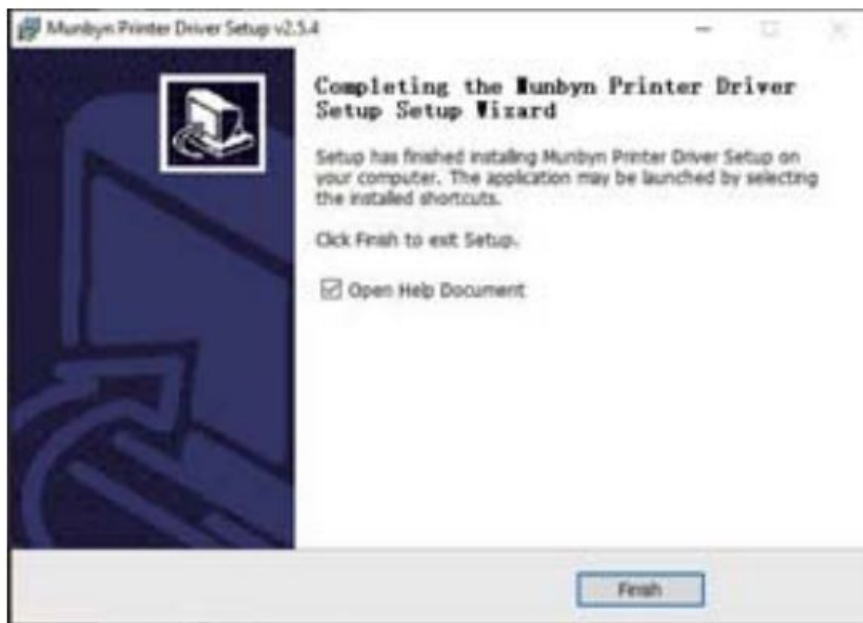
Driver installation

For the latest driver, please visit:

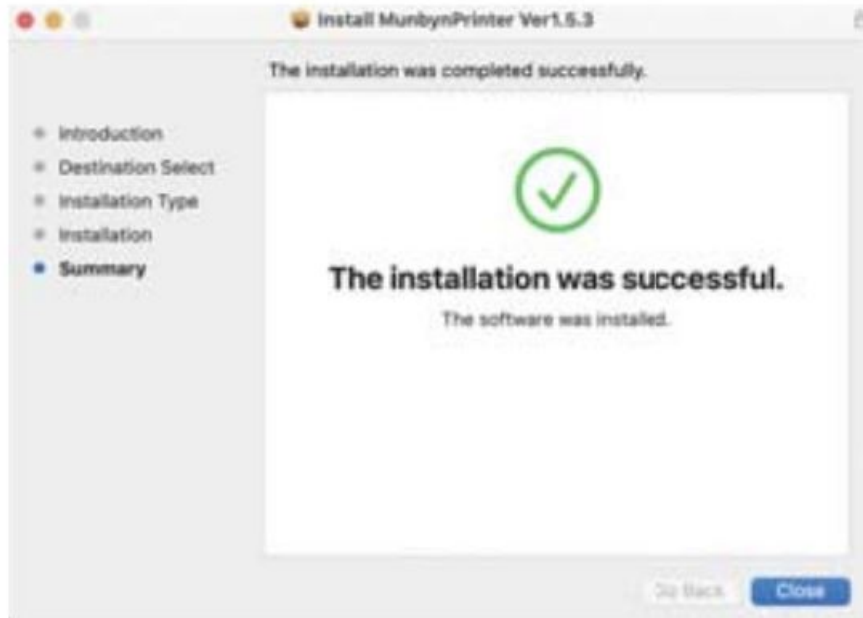
www.munbyn.biz/941d

- Please run the downloaded software from the web address indicated above and follow the prompts to complete installation.

Windows Driver Installation



Mac Driver Installation



Pro Tips

- **Anytime you change your label**, run the automatic label identification.
- Press the feeder button on the printer to **skip a blank label**.
- **To run a self-test**, press and hold the feeder button until you hear two short beeps.
- **Avoid poor quality labels** as they can damage the printer.
- Regularly **clean the printer head**.
- **If the paper is jammed and the red light flashes**, run Automatic label identification.
- Insert Munbyn into the **same USB port** on your computer every time. This will avoid creating duplicate copies of the printer in your operating system..

FAQ

file, please visit:

www.munbyn.biz/941faq

LED Status

Light	Description	Troubleshoot
Green	Normal operation	/
Flashing Red (every 2 seconds)	Label paper is not identified	Pun automatic label identification
Flashing Red (every 1 second)	Cover is not closed	Check that the cover is completely closed
Printer head is overheated	Printer head is overheated	Printer will automatically resume once the p rinter head has cooled down

—

Feeder Button Instruction

Printer status	Feeder button	Function
Printing	Press the button	Pause printing
Standby	Press and hold on until you hear on e beep	Automatic label identification
Standby	Standby Press and hold on until yo u hear five beeps	Reset Printer

—

Specification

Method	Direct Thermal
Resolution	203 dpi
Max Printing Speed	150 mm/s
Paper Width	40-110 mm (157-43 inches)
Paper Thickness	0.06-025 mm
Power Adapter	24V/2A
Printing Life	TPH 100km
Operating Environment	Temperature: -10 to 50°C Humidity:10-90% (non condensing)
Storage Environment	Temperature: -40 to 80 °C Humidity:5-95% (non condensing)
Connection	USB
Weight	1.90 lbs / 0.9kg
Dimensions	D198 mm * W 96mm *H 109 mm

Safety Notices

- The printer head can become very hot after printing labels. Do not touch the printer head.
- Do not bend the power cord excessively or place objects on the cord.
- Do not use the printer if you find any irregularities as these could result in fire or electrocution.
- Keep the printer out of reach of children.
- Use only approved accessories and do not try to disassemble, repair the unit by yourself.

- Keep the printer away from water and other objects that could penetrate the components.
- Please unplug the printer when it is not in use for long periods.

Tech Support

E-mail: support@imunbyn.com

Whatsapp: +8617817881067

Phone +1 403 477 1911

Skype: munbyn

Support time Monday to Friday 24 hours.

MUNBYN provides 18 months warranty and lifetime free service. If you encounter any issues with the product, please contact the MUNBYN team to promptly receive trouble-shooting tips or a replacement.

Website:

www.munbyn.com (how-to videos, warranty details)

FCC WARNING

This device complies with part 15 of the FCC Rules. Operation is subject to the following two conditions: (1) this device may not cause harmful interference, and (2) this device must accept any interference received, including interference that may cause undesired operation. Any changes or modifications not expressly approved by the party responsible for compliance could void the user's authority to operate the equipment.

NOTE: This equipment has been tested and found to comply with the limits for a Class B digital device, pursuant to Part 15 of the FCC Rules. These limits are designed to provide reasonable protection against harmful interference in a residential installation. This equipment generates, uses and can radiate radio frequency energy and, if not installed and used in accordance with the instructions, may cause harmful interference to radio communications. However, there is no guarantee that interference will not occur in a particular installation. If this equipment does cause harmful interference to radio or television reception, which can be determined by turning the equipment off and on, the user is encouraged to try to correct the interference by one or more of the following measures:

- Reorient or relocate the receiving antenna.
- Increase the separation between the equipment and receiver.
- Connect the equipment into an outlet on a circuit different from that to which the receiver is connected.
- Consult the dealer or an experienced radio/TV technician for help.

To maintain compliance with FCC's RF Exposure guidelines, This equipment should be installed and operated with minimum distance between 20cm the radiator your body: Use only the supplied antenna.

Documents / Resources

	<p>MUNBYN ITPP941 Logistic Label Printer [pdf] User Guide</p> <p>ITPP941B, 2A8JV-ITPP941B, 2A8JVITPP941B, ITPP941 Logistic Label Printer, ITPP941, Logistic Label Printer</p>
-----------------------------------------------------------------------------------	-----------------------------------------------------------------------------------------------------------------------------------------------------------------------------------------------